

Prosecutors General of the Council of Europe

15 minutes on international waste trade



OPENBAAR
MINISTERIE



Rob de Rijck

*National coordinating
prosecutor for environmental
crime in The Netherlands*

*Vice-President of the European
Network of Prosecutors for the
Environment ENPE*





WARNING DO NOT FILL ABOVE THIS LINE
DANGER
UN3291
6

WARNING DO NOT FILL ABOVE THIS LINE
DANGER
UN3291
6

WARNING DO NOT FILL ABOVE THIS LINE
DANGER
UN3291
6

WARNING DO NOT FILL ABOVE THIS LINE
DANGER
UN3291
6

WARNING DO NOT FILL ABOVE THIS LINE
DANGER
UN3291
6

WARNING DO NOT FILL ABOVE THIS LINE
DANGER
UN3291
6

UN NIC
Shipping Name
Non-Hazardous as per A.D.R. Regs
avanti

FLAMMABLE LIQUID
UN 1202
avanti

1415

1415





1678

1678

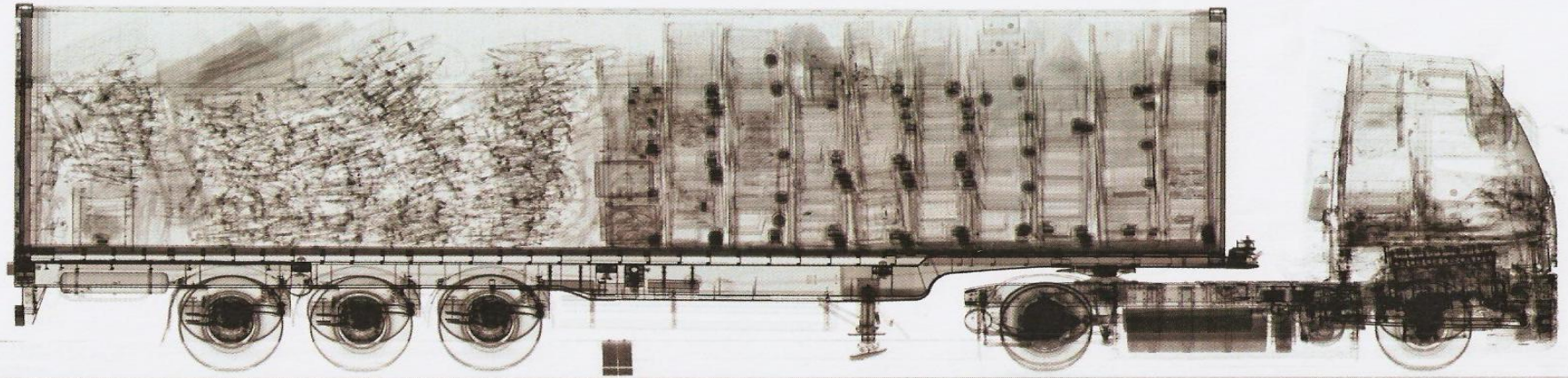


1678









16/12/2009 09:17:32

CargoVision

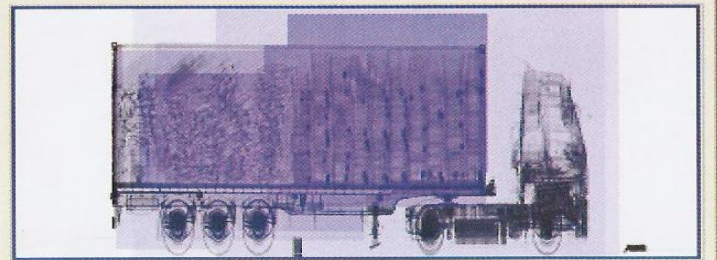
200912160001810007

Control icons: a red 'X', a green checkmark, and a green grid icon.

Control panel with three sliders and various icons. The sliders are labeled with '50' and '0.0'. The icons include a lightbulb, a blue 'S' shape, a blue triangle, a blue square, a blue bar chart, and a blue eye.

Control panel with various icons for image manipulation. It includes icons for zooming (x1, x2, x4), a hand cursor, a magnifying glass, a color calibration bar, and a camera icon.

02
02





Three fundamentals of waste



Every human activity produces waste.



Waste, if left untreated where it originates, will lead to suffocation. Generation of waste always requires transportation and disposal or treatment.



It is profitable not to transport and treat waste as environmentally required. A waste holder profits through externalizing costs to society, the planet and future generations.

International waste trade in figures, 2018

Global trade in waste: **182 million tonnes**

EU generation of waste: **2400 million tonnes**

Waste transport within the EU: **67 million tonnes**

EU export to third countries: **32.7 million tonnes** (\approx 1.9 million containers)

EU import from third countries: **16 million tonnes**

International waste trade in figures

IMPEL suspects one fifth of all transports to be non-compliant.

Criminological literature tends to estimate the degree of fraud in whatever field at 10 %.

If so, in 2018 3 – 7 million tonnes of waste were exported from the EU in infringement of the rules.



Environmental
risks:

Dumping



Environmental
risks:

Irresponsible
recovery



Relevant bodies of law

01

1989

Basel Convention on transboundary movements of hazardous wastes

02

2001

OECD Decision on transboundary movements of wastes for recovery

03

2006

EU Waste Shipment Regulation

04

2008

EU Directive on the protection of the environment through criminal law (Ecocrime Directive)



TWO SPECIFIC ELEMENTS REGARDING CRIMINAL LAW

01

The Basel Convention obliges its Parties to treat illegal shipments of hazardous wastes as a criminal offence

02

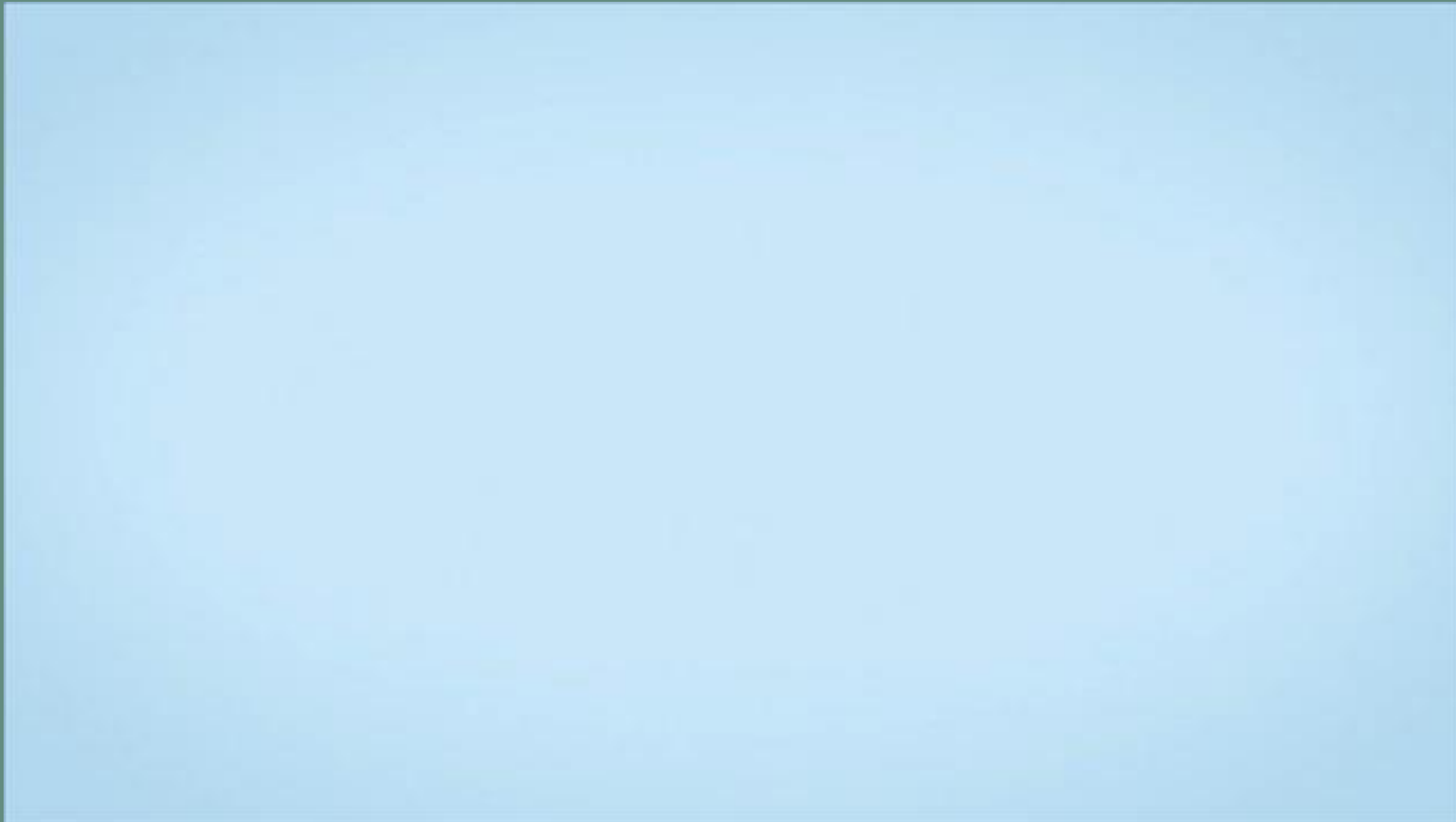
The EU Ecocrime Directive obliges Member States to criminalize shipments violating the EU Waste Shipment Regulation

ENPE Animation



**EU regulation for
cross-border waste shipments:**
Waste Shipment Regulation (WSR)

ENPE Animation



A large, sprawling pile of garbage, including plastic bags, cardboard boxes, and other debris, dominates the foreground and middle ground. In the background, a yellow bulldozer is visible, working on the waste. The sky is a clear, pale blue.

Thank you for your kind attention