



RISE

CRIMINAL SANCTIONS AGENCY



Future Prison Design and Infrastructure


Pia Puolakka

Criminal Sanctions Agency, Finland

27th Council of Europe Conference of Directors of Prison and Probation Services

21st – 22nd June, Sevilla Spain

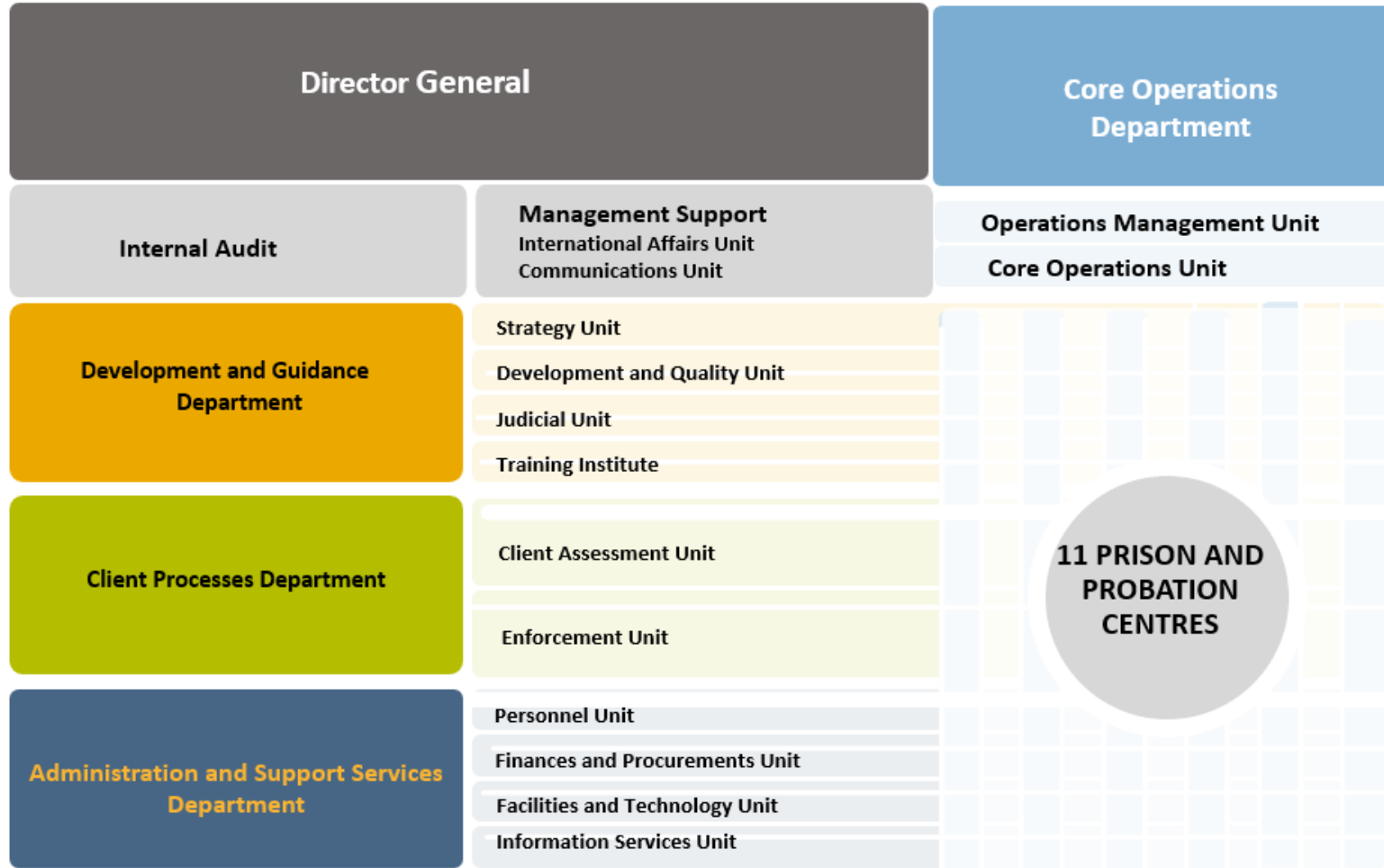
Agenda

- 1) Criminal Sanctions Agency (RISE) 2.0
 - 2) Strategy of RISE
 - 3) Prison Concept
 - Principles and Targets
 - Service Maps
 - Prison Types
 - 4) Principles of Future Prisons
 - 5) Prison Hospital
 - 6) Smart Prison
 - 7) References
- 

1. RISE: Criminal Sanctions Agency 2.0 (1st Sep 2022)

- Director General + **6** Administrative Units + **11** Prison and probation centres
- **Prison and probation centres**
 - 1-4 prison(s) including closed and open units
 - 1-3 probation office(s)
- **Targets**
 - Unified national management and development
 - Congruent processes
 - Effective and equal services across the units

Criminal Sanctions Agency in Finland



Prison and probation centres and units

Prison and Probation Centre for Helsinki:

- 1 Helsinki Prison
- 2 Suomenlinna Prison
- 3 Helsinki Probation Office

Prison and Probation Centre for Uusimaa:

- 4 Jokela Prison and Open Prison Ward
- 5 Kerava Prison
- 6 Vantaa Prison
- 7 Uusimaa Probation Office

Prison and Probation Centre for Southwestern Finland:

- 8 Turku Prison
- 9 Käyrä Prison
- 10 Huittinen Prison
- 11 Köyliö Prison
- 12 Southwest Probation Office
 - Turku Branch Office
 - Pori Branch Office
 - Åland Branch Office

Prison and Probation Centre for Hämeenlinna (female-specific issues nationwide):

- 13 Hämeenlinna Prison
- 14 Vanaja Prison
- 15 Häme Probation Office
 - Hämeenlinna Branch Office
 - Lahti Branch Office

Prison and Probation Centre for Häme and Pirkanmaa:

- 16 Kylmäkoski Prison
- 17 Riihimäki Prison
- 18 Ojoinen Prison
- 19 Vilppula Prison
- 20 Tampere Probation Office

Prison and Probation Centre for Southeastern Finland:

- 21 Mikkeli Prison
- 22 Naarajärvi Prison
- 23 Sulkava Prison
- 24 Southeast Probation Office
 - Mikkeli Branch Office
 - Kouvola Branch Office
 - Lappeenranta Branch Office

Prison and Probation Centre for North Savo:

- 25 Kuopio Prison
- 26 Sukeva Prison
- 27 Kuopio Probation Office
 - Kuopio Branch Office
 - Iisalmi Branch Office

Prison and Probation Centre for North Karelia:

- 28 Juuka Prison
- 29 Pyhäselkä Prison
- 30 Joensuu Probation Office

Prison and Probation Centre for Ostrobothnia and Central Finland:

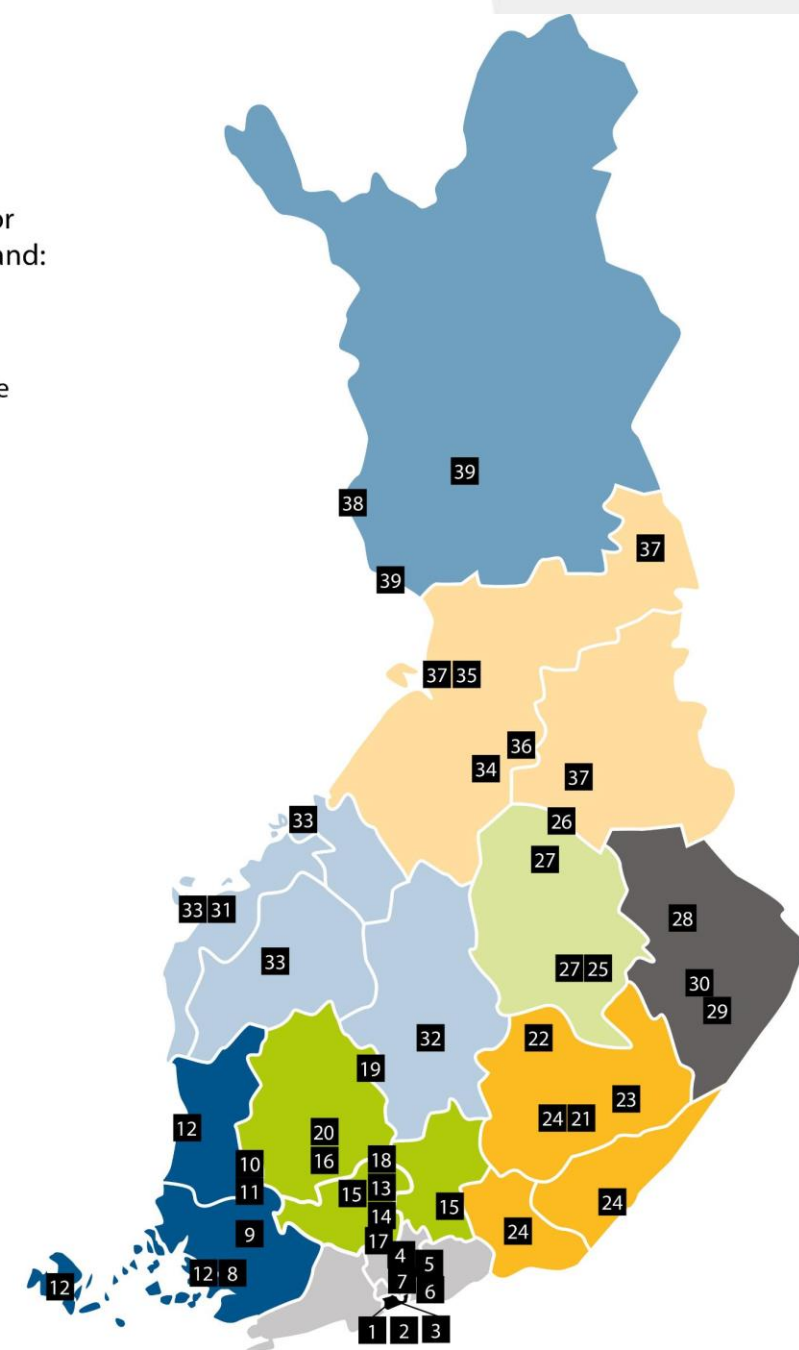
- 31 Vaasa Prison
- 32 Jyväskylä Prison and Probation Office
- 33 Ostrobothnia Probation Office
 - Vaasa Branch Office
 - Seinäjoki Branch Office
 - Kokkola Branch Office

Prison and Probation Centre for Oulu:

- 34 Kestilä Prison
- 35 Oulu Prison
- 36 Pelso Prison
- 37 Oulu Probation Office
 - Oulu Branch Office
 - Kajaani Branch Office
 - Kuusamo Branch Office

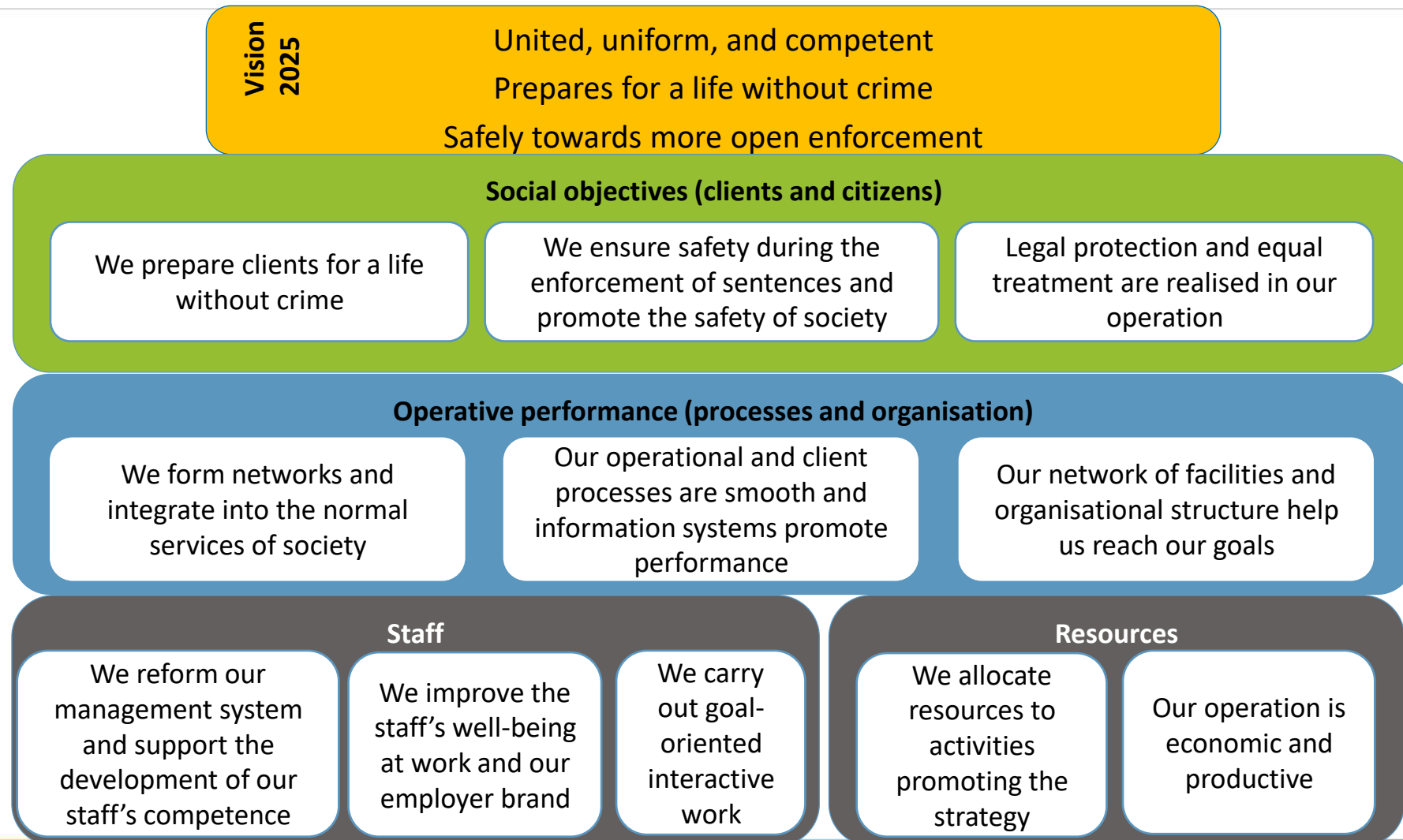
Prison and Probation Centre for Lapland:

- 38 Ylitornio Prison
- 39 Lapland Probation Office
 - Rovaniemi Branch Office
 - Kemi Branch Office



■ Prisons and probation offices and their branch offices

2. Strategy of RISE 2020-2023



3. Prison Concept

- **Principle of Normality**
 - "Prison conditions must be organized as far as possible to correspond to the living conditions of society." – Imprisonment Act 1:3 §
- **Prison As a Learning Environment For a Life Without Crime**
 - Cuts costs and uses space more efficiently
 - Enables more open prison environment
 - Increases prisoners' independent use of rehabilitative services
 - Provides digital services to be used independently
 - Leaves more time for staff – prisoner interaction and coaching
 - Requires a new type of a work and management culture
- Includes physical facilities and furniture, use of space, ICT-facilities, atmosphere and visual appearance



GOAL

To improve the prisoners' ability to live without crime
 > To decrease the risk of repeated offending

HOW?

Effecting the probability of repeated offending is the foundation of everything. Effects are produced through...

WHY?



The concept is also informed by the four core values of Criminal Sanctions Agency:

- Respect for humanity
- Justice
- Belief in the ability of a person to change and grow
- Security

The prison concept is based on Finnish Imprisonment act, which states that the goal of the enforcement of imprisonment is to increase the readiness of the prisoner to live a life without crime, by promoting the prisoner's ability to manage his or her life and by promoting his or her adjustment to society as well as to prevent the commission of offences during the term of sentence.

Active support and motivation

Humane and respectful interactions

Coaching for change

CULTURE

LEADERSHIP

A prison is a **LEARNING ENVIRONMENT FOR A LIFE WITHOUT CRIME**

- safe, encouraging and supporting of participation in society -

Supporting convicts' independence and initiative

Matching services to convicts' needs

Building partnerships outside the prison

SERVICE PROVISION

FOR WHOM?

The concepts' beneficiaries include the society, the personnel of the prison as well as the prisoners.

FOR THE PRISONERS
 Improved chances of participation in the society and of living without crime during and after the sentence.

FOR THE PERSONNEL
 Sense of meaningfulness in work and opportunities for professional growth.

FOR THE SOCIETY
 Safety and resource-effectivity that is measurable.

1 Substance use and addictive behaviour	2 Criminal thinking and values	3 Social and everyday life skills	4 Education and vocational skills	5 Health and well-being	6 Social relations, family and parenting	7 Reintegration into society
Substance abuse rehabilitation programmes Digital services Individual work carried out by instructors / prison officers	Restorative mediation Programmes for managing self-esteem and social problems Programmes for managing violence and aggression Psychologist’s reception Prison chaplain’s reception Creative activities	Teaching management of everyday finances Learning social skills and mediation skills Management of social matters (social welfare) Cooking skills for prisoners Outdoor work / Green care Teaching digital skills	Basic education Preparatory education for vocational training General upper secondary education Higher education Vocational education connected to work activities Library	Arrival check (part of sentence plan) Health check-up prior to release Group exercise and sports with instructor Health education Medical care Mental health care Dental care Outdoor exercise Gym	Current situation and planning of individual work based on networks Different types of visits Family camps Other communication with family and close people Individual work carried out by instructors / prison officers	Peer-support for those motivated to desist from crime Case management and providing information about services provided by society Preventing homelessness

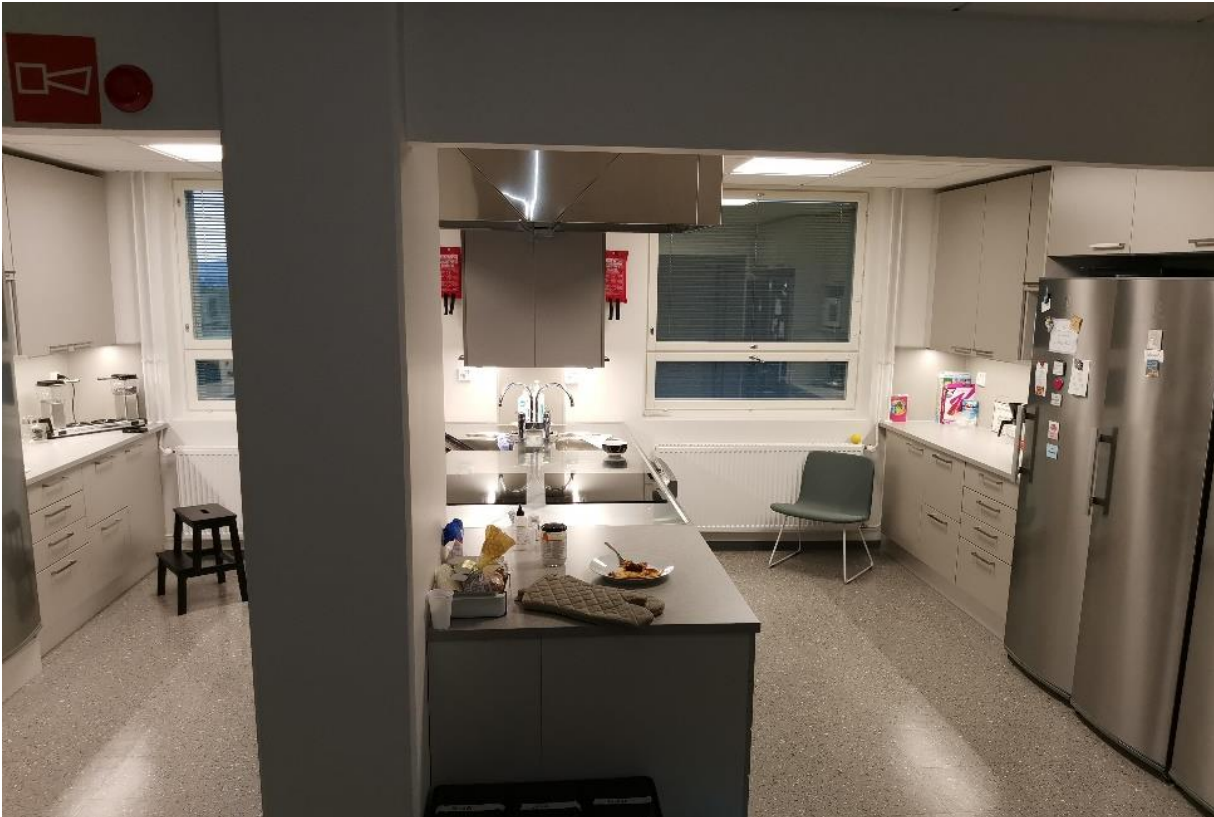
“Safe and rehabilitative environment. Professional interaction with respect for human dignity”

Prison Types

- **A1 & A2** Open Prison and **S1 & S2** Closed Prison
 - The more open unit, the more independence for the inmates, more use of services outside prison, more homelike premises and less intensive monitoring
- **General principles**
 - Less institutional: less long corridors, more furniture, specific colors, natural light, no need to hide personal items or items related to hobbies / activities, easy access to all parts of the premises
 - Premises can be modified according to different activities (mobile elements) and encourage meaningful activities
 - Activating yard and green areas
 - Possibility for personal time in single person cells / rooms
 - Personal use of digital services (cell device)
 - S1 & S2: no spaces where you can hide things or harmful items

Jyväskylä Open Prison 2021







Kerava Open Prison 2021



4. Principles for Future Prisons

- **Location:** Prisons locate in areas where there is demand (crime). Carrying out imprisonment close to the prisoner's home promotes rehabilitation in many ways.
- **Appropriate size:** The prison should be large enough to allow rehabilitative activities with adequate resources, but not too large so that rehabilitation is not difficult. The ideal size is from 100 to 350 places. Prisons larger than this should be functionally divided into smaller units. An open prison situated nearby a closed prison may also have less than 100 places.
- **Functional facilities:** Prison facilities are suitable or can be cost-effectively converted to support rehabilitative activities and secure separate placement of special groups like juveniles, women detainees. The facilities are in good condition: the condition and technical arrangements of the prison facilities are cost-effective to maintain.
- **Reachable:** The prison is well reachable. This increases the accessibility of the location to staff, partner organisations, relatives and prisoners.

Principles for Future Prisons

- **Partners are close:** The prison is well accessible to key partners such as police, district court, prison health care and social services.
- **Local services:** There is a wide range of social and other services near the prison, such as a city. This will improve the attractiveness of the location for staff as well as the management of rehabilitative services.
- **Adaptable facilities:** The prison is easy to expand (formula, plot, building right) or reduce, if necessary, in the future. Prison facilities can be easily converted to fit another type of prison, if necessary.
- **Digitalisation:** The facilities shall enable prisoners to use electronic services and digital services in a secure and personal manner.

Principles for Future Prisons

- **Service design**
 - Service maps are updated according to prisoners' needs and taking into account different special groups
 - Every unit has an update service including digital services and services from partners
 - Service needs define prison design
- **Increased use of open prisons and various alternatives to incarceration** like increased use of probations
- **Reachability of well educated staff** is even more important in the future when considering where prison units should be situated

5. Prison Hospital (2027-2028)

- Normality principle: comparable services to communal hospitals
- Centralised prison hospital including somatic and psychiatric treatment
 - Geographically reachable
- More preventive care and substance abuse rehabilitation including substitution treatment
- Specialised services for juvenile & underaged prisoners, women prisoners, neuropsychological problems, psychosis, high risk offenders (violence and sexual), elderly prisoners and terminal care
- Digital services support treatment
 - Personal cell devices
 - Video consultation from other units
 - Cost-effectiveness: less transfers

6. Smart Prison 2021 -

- **Hämeenlinna Smart Prison**
 - Personal cell device with smart system installed in every cell for 100 women inmates
 - Pilot environment for new digital services
 - Digital services as part of everyday management, rehabilitation & interaction between staff & prisoners
 - First prison designed according to the new prison concept
- **Digitalisation in other prison units**
 - Joint use workstations with digital services portal in every unit
 - Digital guidance training to staff
 - Increased use of video calls & consultations during pandemic

Digital Services Strategy

- **Reduce recidivism and reintegrate into society**
 - Principle of normality: availability of public services
 - More services with personal and easy access
 - Continuum to digital society
 - Prevent marginalisation: digital skills are needed in modern society
 - Modern job market requirements
- **Smooth operational and management processes**
 - Online independent management of routine tasks, rehabilitation services and studies
 - More productive use of staff resources
 - Less paperwork: more time for face-to-face contact
 - Cost-effective and secure solution in closed prisons

“Change in prison culture enables positive change in prisoners.”

In a Digital Learning Environment Prisoners...

- **Manage** their daily affairs via the cell device
 - **Study** also independently and subjects not available in prison
 - **Contact** their relatives online
 - **Consult** professionals and take responsibility for their rehabilitation
 - **Learn** digital skills
 - **Learn** to search for information online
 - **Improve** their free time with meaningful activities when in their cells
 - **Stay on track** what happens inside and outside the prison
 - **Learn** VR-assisted self-regulation
-

In a Digital Learning Environment Staff...

- **Benefit** from more flexible work flows
- **Contact** prisoners more proactively face-to-face
- **Interact** with prisoners in new ways - online
- **Supervise** digitally
- **Learn** digital skills
- **Guide** prisoners to use digital services
- **Adopt** values and attitudes supporting
 - New prison concept
 - New prison officer concept including both security and rehabilitative work

Smart Prison Infrastructure

- Lenovo laptops (hardened) with **PriSec** software
 - LAN + WLAN
- Separate laptops for high-school examination
- Separate cell TV & phone
- Virtual Reality (VR) devices
- Devices for AI training
- Security technique





PriSec

- Noticeboard
- Calendar
- Requests and Chats
 - Requests and surveys
- Material bank
 - Guidelines, forms and self-help material for rehabilitation
- Video Visit
 - Video calls with prison staff, relatives and public service providers
- Canteen
 - Online shopping
- E-learning
 - Moodle
 - Open Office tools
- E-books and audiobooks
- Restricted internet
 - Whitelisted websites
 - Portti - opening page
- Inmate e-mail

Digital Service Map

TH 1
Substance use and
addictive behaviour

TH 2
Criminal thinking and
values

TH 3
Social and everyday
life skills

TH 4
Education and
vocational skills

TH 5
Health and well-being

TH 6
Social relations, family
and parenting

TH 7
Reintegration to
society

Whitelist

Self-help materials
in electronic form

E-consultation
inside and outside
prison

Whitelist

Self-help materials in
electronic form

Online rehabilitative
program work inside
prison

E-consultation with NGOs
(women specific)

Whitelist

Household care
materials in
electronic format

Online canteen

Calendar and
Noticeboard

Digital guidance

Whitelist

Basics of AI -course

Moodle

E-learning and e-
materials

E- and audiobooks

ICT skills courses

Training AI (2022)

Whitelist

Self-help materials
in electronic form

E-consultation with
prisoners'
healthcare unit and
other services

Online therapies

Virtual Reality, VR-
assisted
rehabilitation

Whitelist

Self-help materials
in electronic form

Virtual visits with
family members and
other close ones

E-consultation with
social services (child
care etc.)

Red Cross online
peer groups

Whitelist

E-consultation with
communal, judicial
and social services
(employment,
housing etc.)
- Kela-channel

E-consultation with
NGOs

*E-consultation with
experts by
experience*

**Portti**[Alcohol, Drugs and Addictions](#)[Values and Behavior](#)[Everyday skills](#)[Studying and Work](#)[Health and Well-Being](#)[Family](#)[Society](#)[Home](#) » [Portti](#)**PORTTI**

Attention! The Criminal Sanctions Agency is not responsible for providing the services on the Gate website. Some websites may offer paid services or services that require signing in or registration, such as giving own contact information. You decide whether or not to use such services.

[Information About Coronavirus](#)[TA 1 Alcohol, Drugs and Addictions](#)

You can find help to stop or reduce alcohol or drug use, and treatment of other addictions, here.

[TA 2 Values and Behavior](#)

Services related to mental health, controlling own behavior, and spirituality, can be found here.

[TA 3 Skills in Everyday Life](#)

Digital Environment

- **Digital Leap**
 - Basic skills & coding / image processing
- **Visible Women**
 - Online consultation for rehabilitation



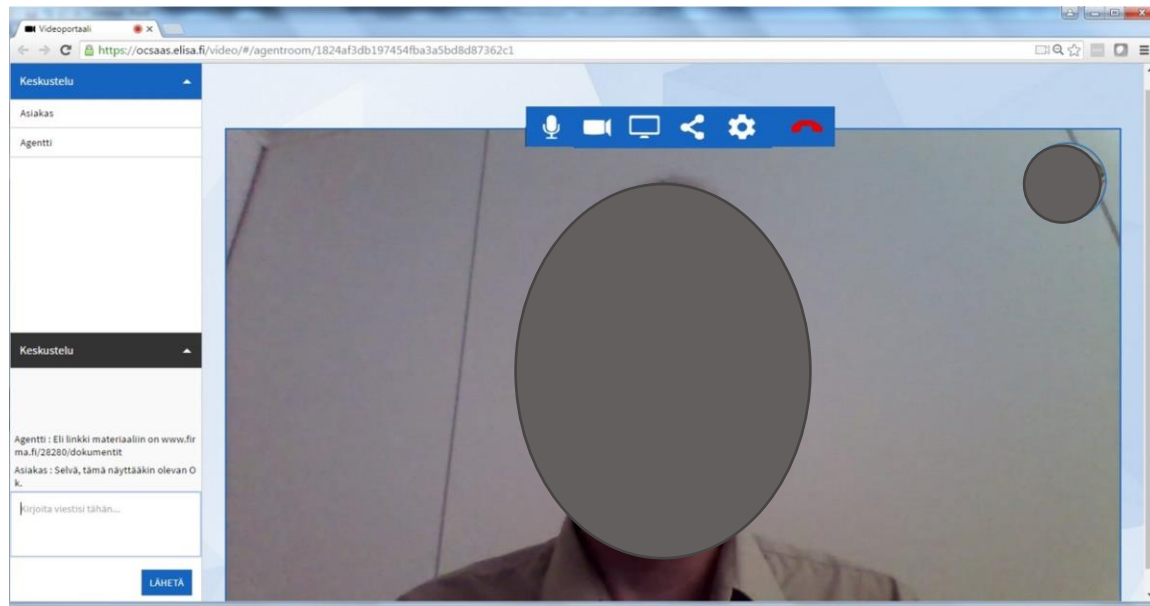
Kalliola Settlement Activities



Krits – Finnish Foundation for Supporting Ex-offenders

Digital Environment

- Kela Channel
 - Video calls with Social Insurance Institution



- Aggredi
 - Video consultation for aggressive behaviour rehabilitation



AGGREDI

MINKÄ KADULLA VOITTAAN, SEN KÄRÄJILLÄ HÄVIÄÄ

AGGREDI on tukipalvelu, joka auttaa kodin ulkopuolisen väkivallan tekijöitä irti väkivallasta. Tarjoamme mahdollisuuden käsitellä väkivallasta syntyneitä ongelmia puolueettomalla maaperällä.

Aggredissa käyminen on vapaaehtoista ja edellyttää vain halua tehdä asiat tulevaisuudessa toisin, jotta vankilatuomioita ei enää tulisi.

Aggredi toimii Helsingissä, Kuopiossa, Porissa, Tampereella ja Turussa. Lahdessa toimintaa ollaan käynnistämässä kesäkuussa 2021.

Vanajan ja Hämeenlinnan vankiloiden kanssa on sovittu yhteistyöstä, joka mahdollistaa työskentelyn aloittamisen videopuheluilla.

Yksikön Aggredi-yhteyshenkilö:

KYSY LISÄÄ TYÖNTEKIJÄLTÄSI!

Digital Environment - Learning Artificial Intelligence (AI)

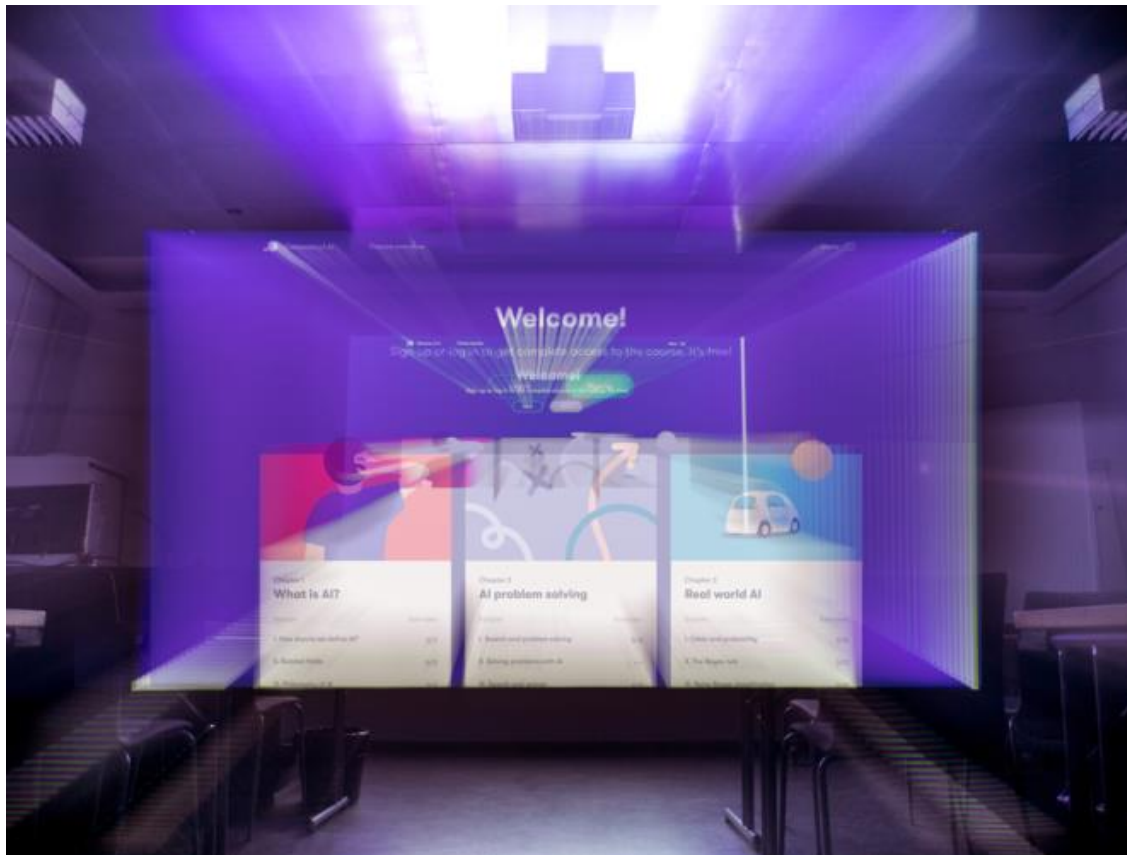


Photo: Matti Ahlgren / Aalto University

- 3 free online courses (© Helsinki University & Reaktor
 - Elements of AI
 - Building AI
 - Ethics of AI
- Defining AI, problem solving, probabilities, machine learning, neural networks, basics of Python, future implications and ethics
- <https://www.elementsofai.com/fi/>

Virtual Environment – Virtual Reality (VR) Assisted Rehabilitation



- Sessions assisted by psychologists
- In collaboration with Tampere University
 - Relaxation, mood, skills training
 - Substance rehabilitation?
- New VR-programs for social anxiety and aggressiveness in 2022

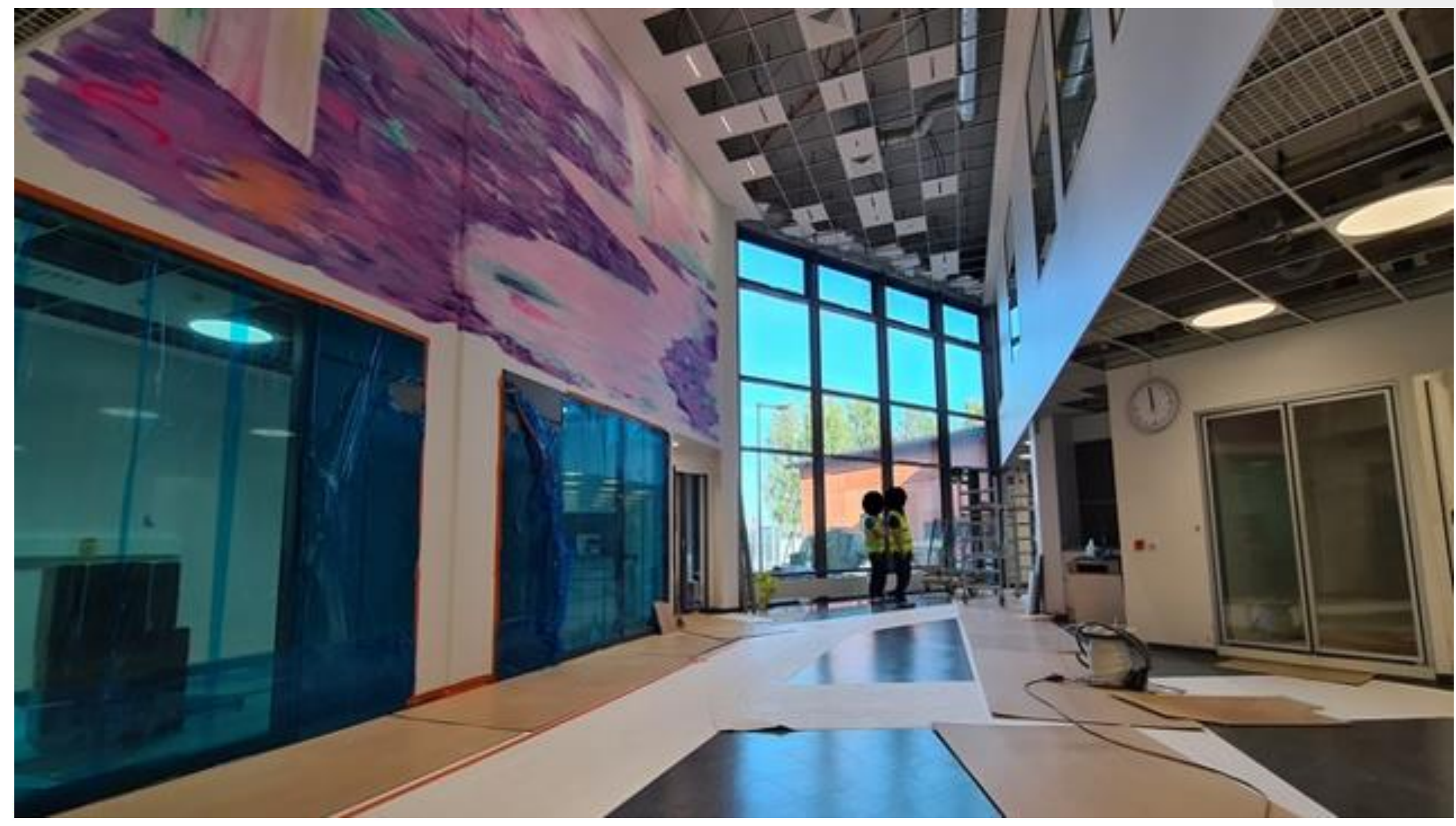
Vocational Premises - Training AI



- Training AI algorithms as prison work in four prisons including Smart Prison (women inmates)
- In collaboration with a software company
- Training material includes text material on real estates
- Prisoners learn digital and cognitive skills
- Alternative work form to prisoners unable to participate in more physical or group work

New Ways for Rehabilitation and Interaction









Future Digitalisation

DigiIN

**Towards socially
inclusive digital society**

Finnish Institute for Health and Welfare &
Laurea University of Applied Sciences

- **DigiIn** research project in Smart Prison
- In 2022 and 2023 there will be two new smart prisons and the inmate e-mail system will be extended to all closed prisons
- Future
 - Extending the smart system to all closed prisons
 - Integrations: OMS, Prisoner health care management system, Prisoner payment card etc.

Our Story Continues



- **Business Insider:** At prisons in Finland, inmates are learning AI and taking online tech courses as a bridge to life on the outside
- <https://www.businessinsider.com/cdn.ampproject.org/c/s/www.businessinsider.com/finland-prisons-technology-ai-online-classes-2020-8?amp>

Linna

Tervetuloa naisvankilaan! Dokumenttisarja uudesta Hämeenlinnan vankilasta

Katso

Jaa ohjelma

Lisää suosikiksi

KAUSI 1

Katsottavissa

Tulossa

Kaikki



27 min

Jakso 1: Saako uudesta sellistä skypettä?

1/8. Edessä on muutto uutuuttaan kiiltävään naisvankilaan. Elinkautisvanki Lilja saa kuulla kuittailua tavaroidensa määrästä. Vartija Seija urakoi pitkän päivän vankien muuttokuormia tarkastaessaan.

ma 7.2.2022



27 min

Jakso 2: Sama paska eri paketissa

2/8. Uusi vankila on vihdoin valmis ottamaan asukkaat vastaan - vai onko? Keskeneräisyys koettelee kaikkien hermoja muuttohässäkän keskellä.

ma 7.2.2022



27 min

Jakso 3: Jos tekee jekkuu, pitää kestää kakkuu

3/8. Vangit ovat huolissaan ompelimon tulevaisuudesta. Jane saa huonoja uutisia kotimaastaan ja Mirella laskee kiivaasti jäljellä olevia päiviä.

ma 7.2.2022



27 min

Jakso 4: Kuka muistaa vankia jouluna?

4/8. Vasta-avioitunut Tiina saapuu suorittamaan tuomiotaan ja Lilja valmistautuu neljanteen jouluunsa vankilassa.

ma 7.2.2022



28 min

Jakso 5: I'm not a criminal

5/8. Kotiäiti Linda on ensimmäistä kertaa



27 min

Jakso 6: Perhetapaamiset peruttu, hyvää äitienpäivää!



27 min

Jakso 7: Mitä ei voi estää, se täytyy kestää



27 min

Jakso 8: Toiset lähtee, toiset jää

8/8. Tuomionsa aikana Lilja näkee vankien



7. References

- Allen, D. T., & Abadi, M. (2020, August 11). At prisons in Finland, inmates are learning AI and taking online tech courses as a bridge to life on the outside. *Business Insider*. <https://www.businessinsider.com/finland-prisons-technology-ai-online-classes-2020-8?r=US&IR=T>
- Lindström, B., & Puolakka, P. (2020). *Smart Prison: the preliminary development process of digital self-services in Finnish prisons*. <https://icpa.org/smart-prison-the-preliminary-development-process-of-digital-self-services-in-finnish-prisons/>
- Puolakka, P. (2021). *Towards digitalisation of prisons: Finland's Smart Prison Project*. Penal Reform International. <https://www.penalreform.org/blog/towards-digitalisation-of-prisons-finlands-smart-prison-project/>
- Puolakka, P. (2021). Smart Prison Facility Spurs Rehabilitation in Finland. *Correctional News*, November 3. <https://correctionalnews.com/2021/11/03/smart-prison-facility-spurs-rehabilitation-in-finland/>
- Puolakka, P. (2021). Smart Prison: A historical digital leap in Finnish prisons. *Justice Trends*, June 25. <https://justice-trends.press/smart-prison-a-historical-digital-leap-in-finnish-prisons/>

- Puolakka, P. (2022). Smart Prison: From Prison Digitalisation to Prison Using, Learning and Training Artificial Intelligence. *Justice Trends*, Issue 8. <https://justice-trends.press/smart-prison-from-prison-digitalisation-to-prison-using-learning-and-training-artificial-intelligence/>
- Varghese, S. (2019, October 23). In Finland, prisoners are being taught crucial AI skills. The Nordic state plans to prepare prisoners for the digital job market. *Wired UK*. <https://www.wired.co.uk/article/finland-ai-prisons>
- **Academic research:**
 - Järveläinen, E., & Rantanen, T. (2020). Incarcerated people's challenges for digital inclusion in Finnish prisons. *Nordic Journal of Criminology*. DOI: <https://doi.org/10.1080/2578983X.2020.1819092>
 - Rantanen, T., Järveläinen, E., & Leppälahti, T. (2021): Prisoners as Users of Digital Health Care and Social Welfare Services: A Finnish Attitude Survey. *International Journal of Environmental Research and Public Health*, 18(11), 5528.

Thank you! Merci!



- Pia Puolakka, Project Manager, Smart Prison project, Criminal Sanctions Agency, Finland

pia.puolakka@om.fi

