

Implementing “ecological character” provisions for Emerald sites – basic guidance

Dave Pritchard

- **Request from Standing Committee 37**
- **Shifting emphasis from designation to active protection**
- **No new obligations – just advice on implementing existing ones, esp Resolution No. 5 (1998)**
- **15 guidelines, and accompanying rationale for each**

1. Objective = maintain ecological character *(paras 2.1 – 2.9)*

2. Definition of ecological character in the Bern Convention context
(paras 3.1 – 3.9)



3. Describing an individual site's ecological character *(paras 3.10 – 3.15)*

- Using the ASCI Standard Data Form
- Itemised elements, plus overall site integrity and distinctiveness

4. Baselines and natural variability *(paras 3.16 – 3.18)*

4. SITE DESCRIPTION

4.1. GENERAL SITE CHARACTER:

Code	Habitat class	% cover
TOTAL HABITAT COVER		100 %

Other site characteristics:

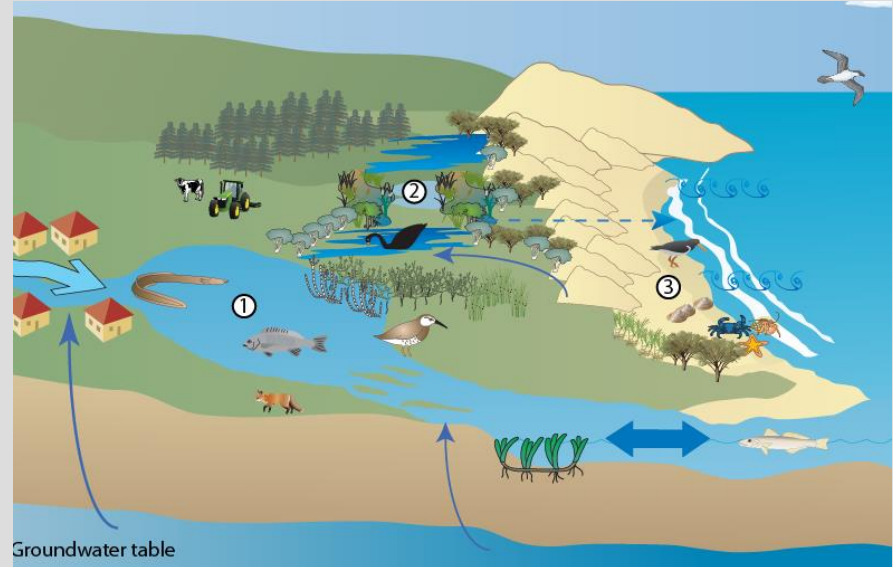
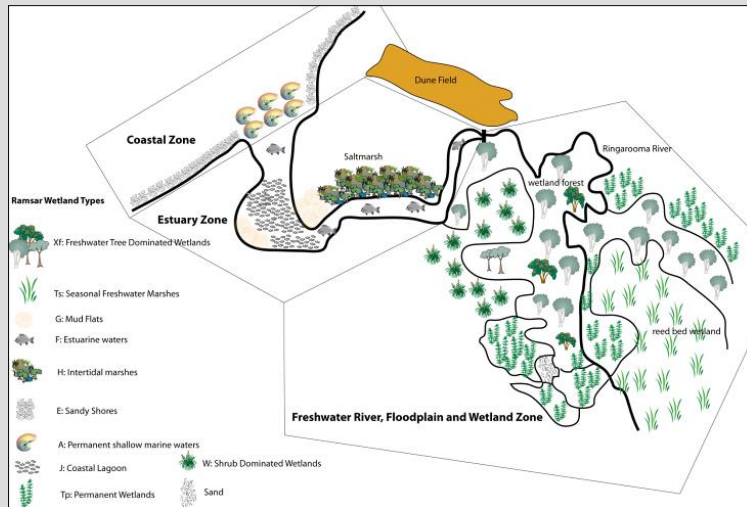
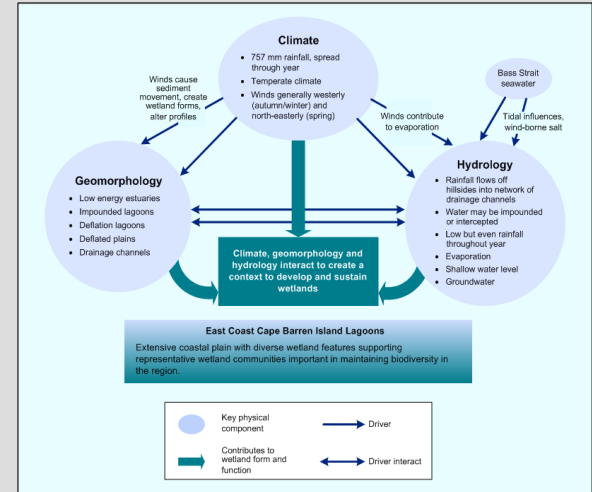
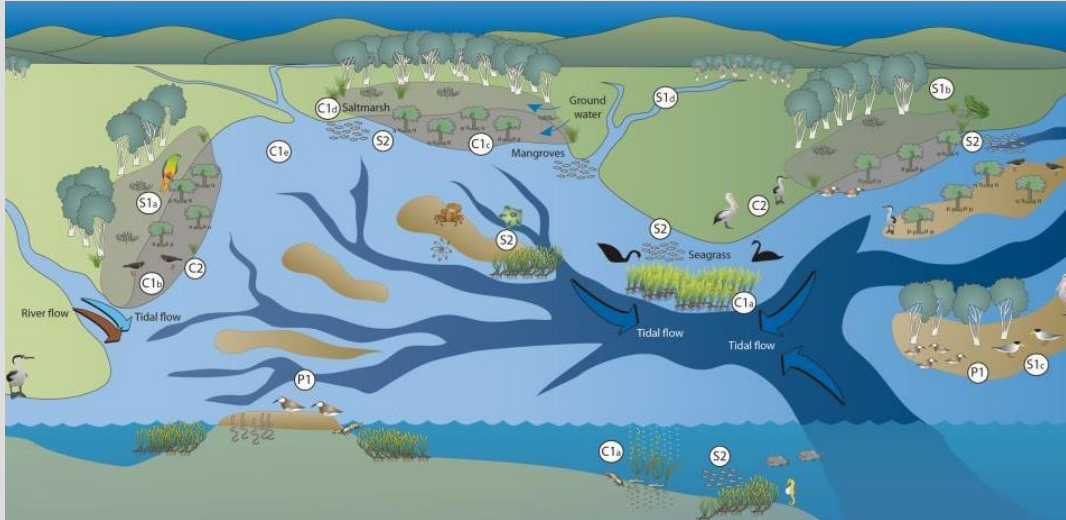
4.2. QUALITY AND IMPORTANCE:

4.3. Threats, pressures and

The most important impacts and activities with impacts

Rank	Negative impacts		Positive impacts	
	Threats and pressures (code)	Pollution (optional) (code) (i / o / b)	Threats and pressures (code)	Pollution (optional) (code) (i / o / b)

5. Conceptual models *(paras 3.19 – 3.27)*



6. Defining *change* in ecological character of Emerald sites

(paras 4.1 – 4.9)

7. Judging “substantial effect”

(paras 4.10 – 4.19)

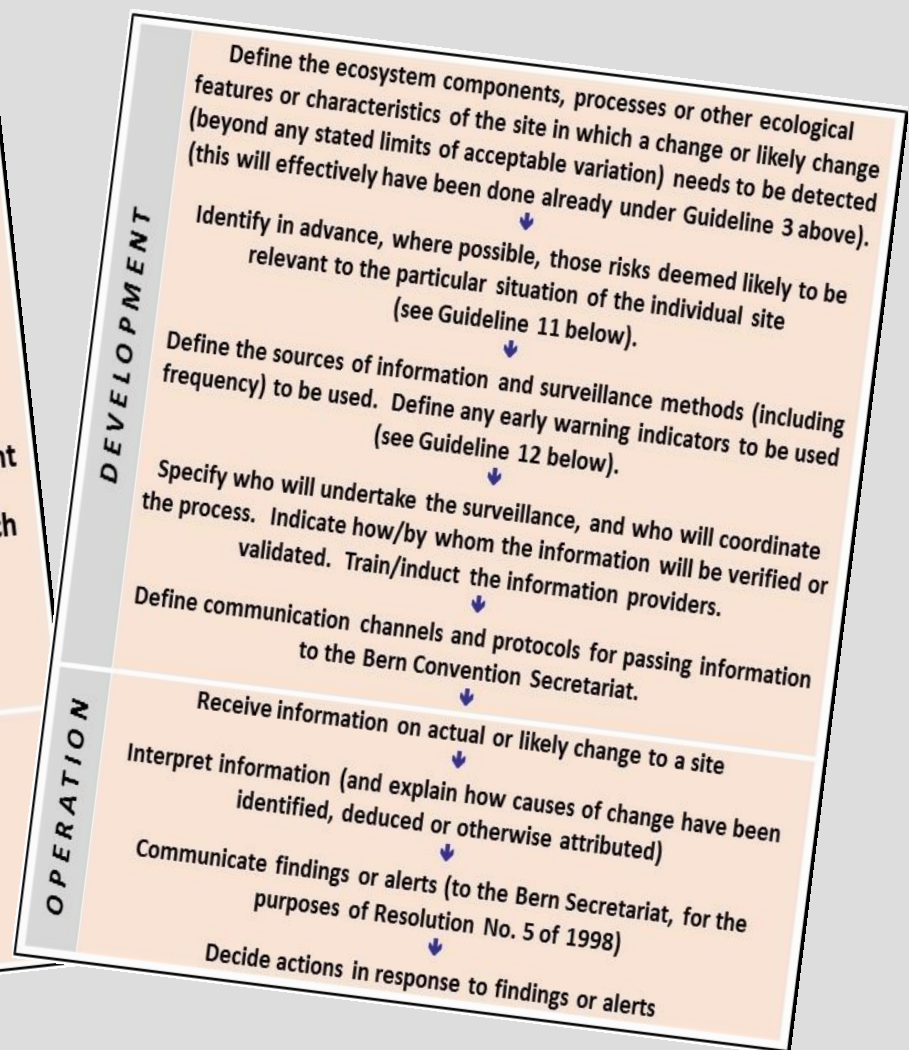
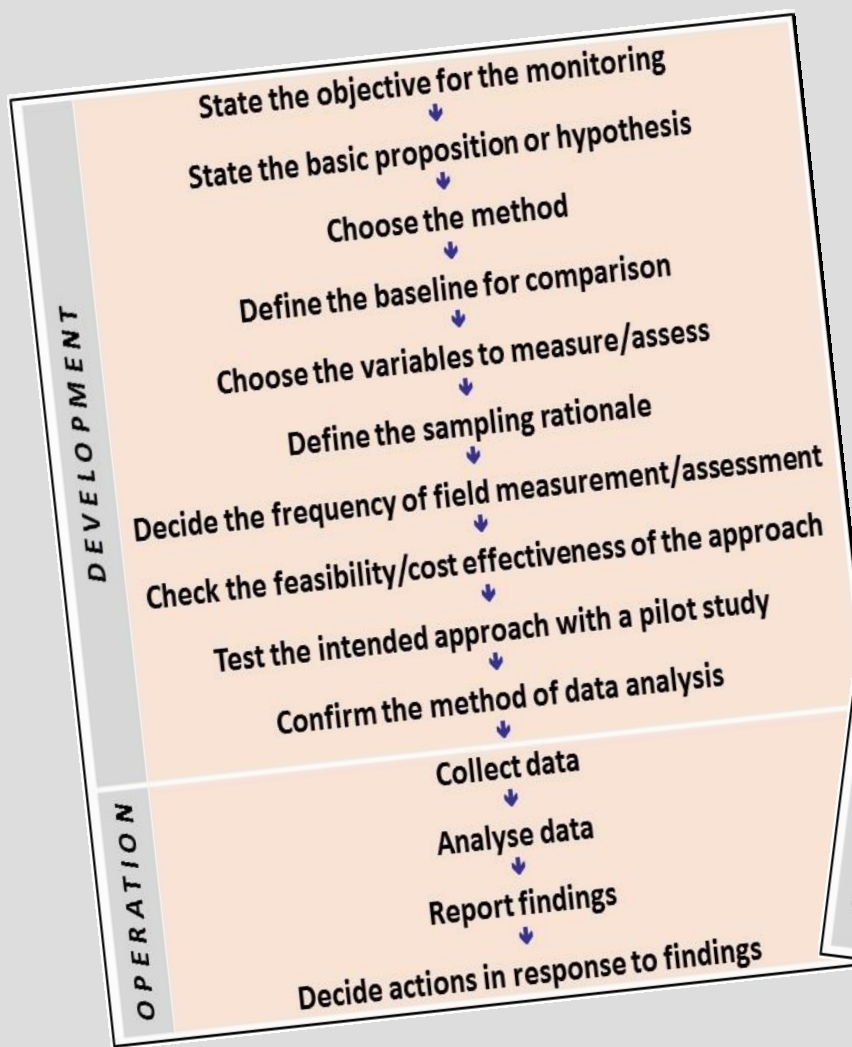
- **Precaution (“if in doubt, report”)**
- **Following established international norms**



8. Making appropriate arrangements for monitoring *(paras 5.1 – 5.7)*

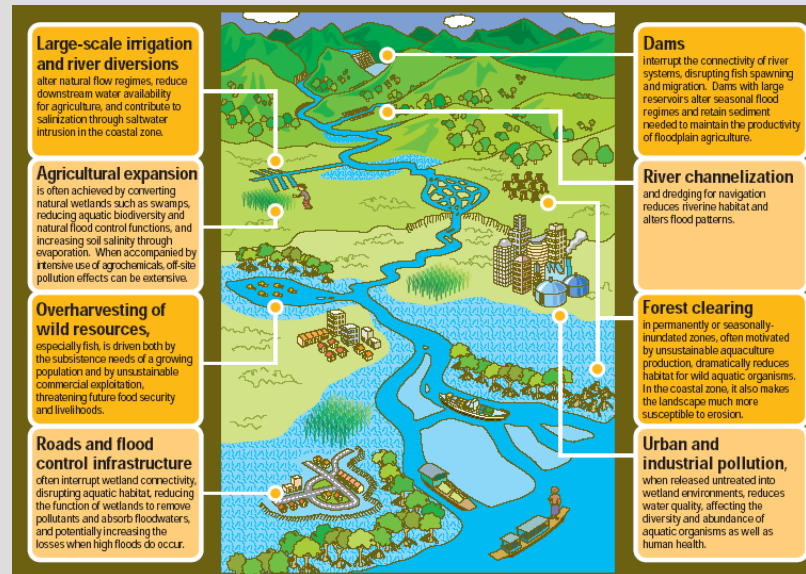
9. Monitoring progress against planned objectives *(paras 5.8 & 5.11)*

10. Monitoring to pick up unplanned events (surveillance) *(paras 5.9 – 5.11)*



- **Flexible according to circumstances & capacity**
- **“Likely” change might include plans & decisions**

11. Assessing risks *(para 5.12)*



12. Early warning indicators *(paras 5.13 – 5.22)*

- Judging “likelihood” of change

13. Impact assessment *(paras 6.1 – 6.5)*

- (Existing regimes)

14. Response options *(paras 6.6 – 6.18)*

avoid
↓
mitigate
↓
compensate

- Considering the Network level too



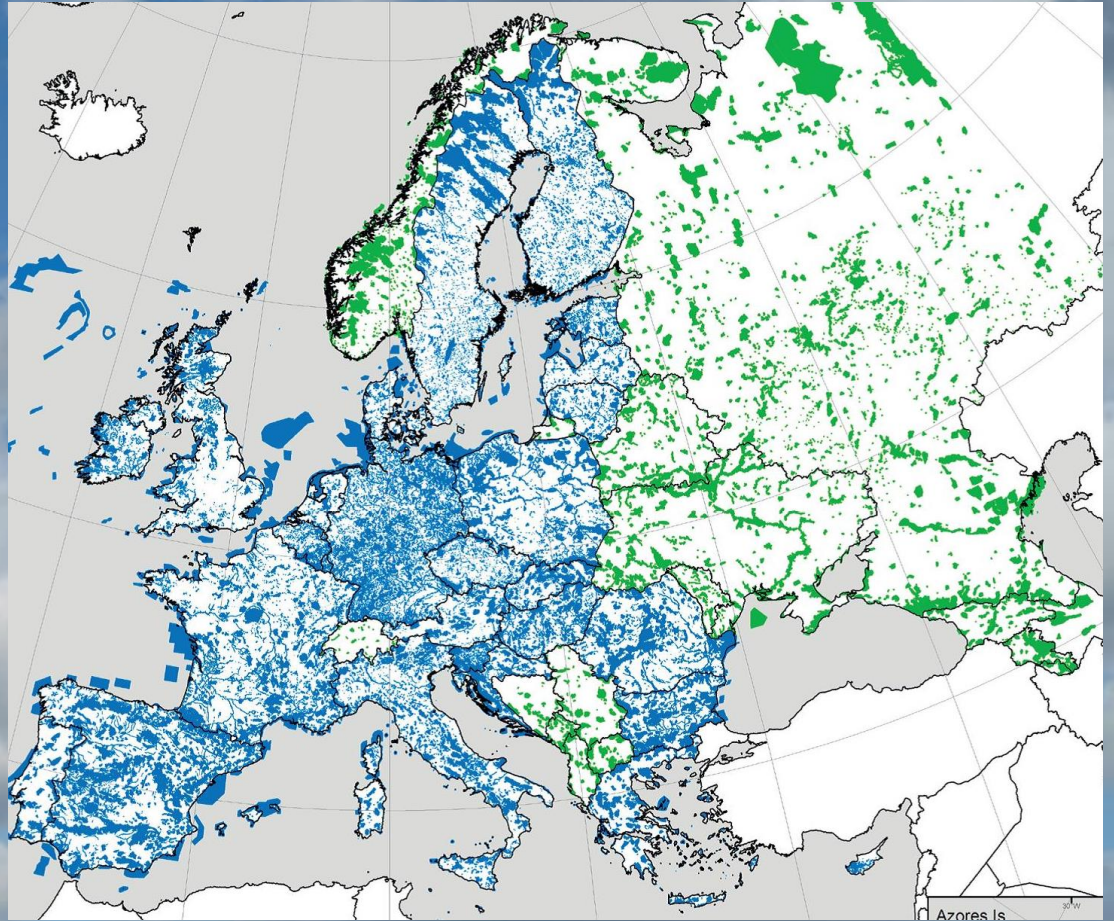
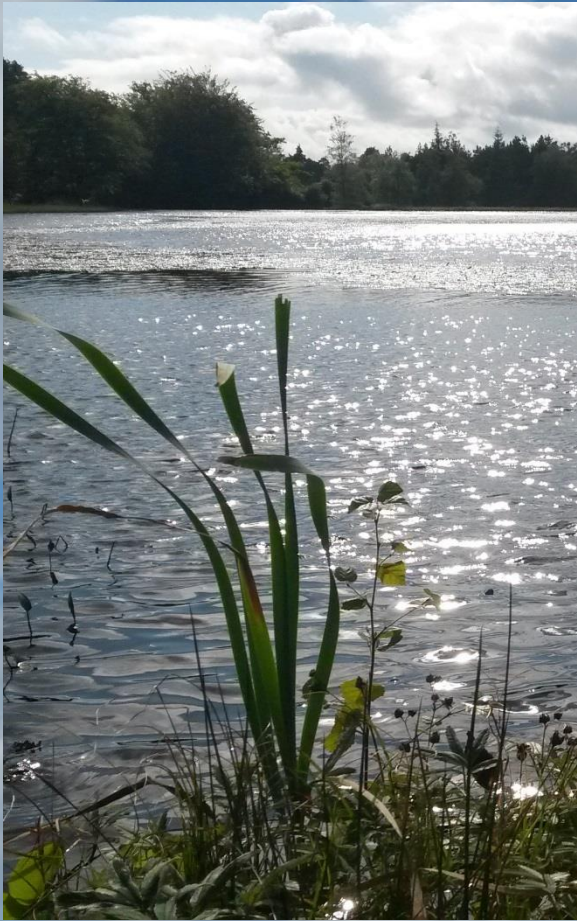
15. The case file system *(paras 7.1 – 7.12)*

- (Using these guidelines to reduce the need for opening a case file)

Recommendations on case files *(para 7.12):*



- Relating to ecological character objective
- Final report on solutions / lessons
- Rapid advice / consultation service



Thank you !!