



Limited or proud? - Involving local stakeholders in the conservation of Dolomite flax habitat in the Szénás Hills European Diploma Area (Hungary)

Pál Kézdy, PhD





1995

Ipolytarnoc Fossils PA

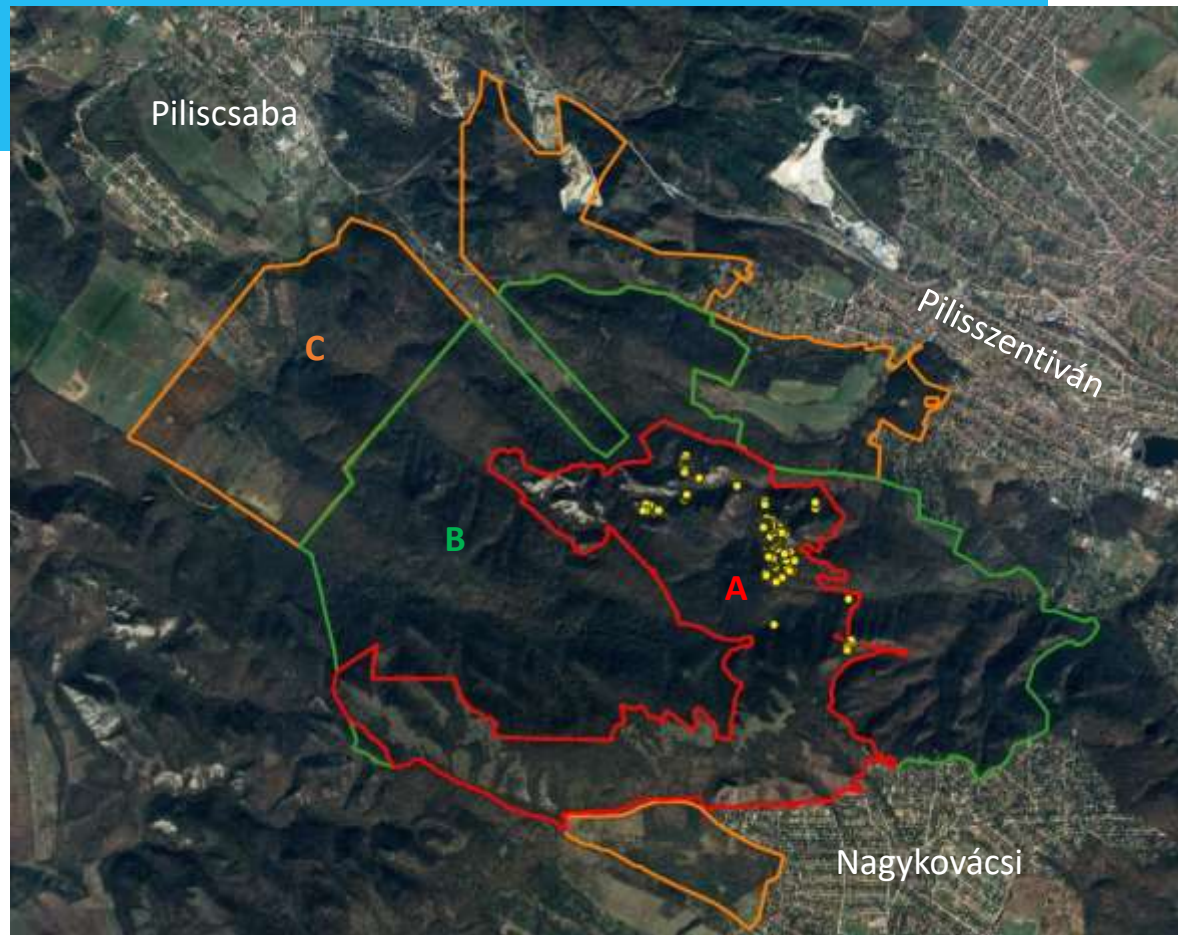
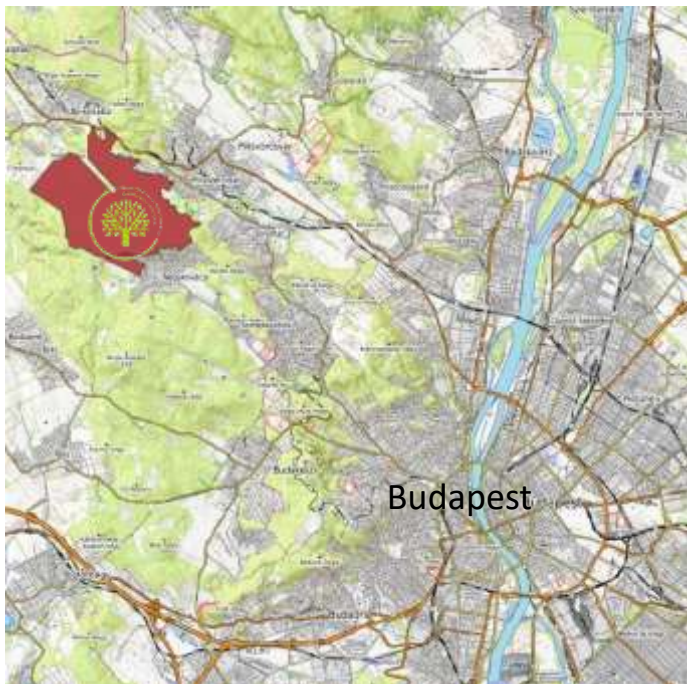
Szénás Hills PA



Szénás Hills European Diploma Area

LOCATION

- Densely populated area next to Budapest
- Located among three settlements
- 1200 ha



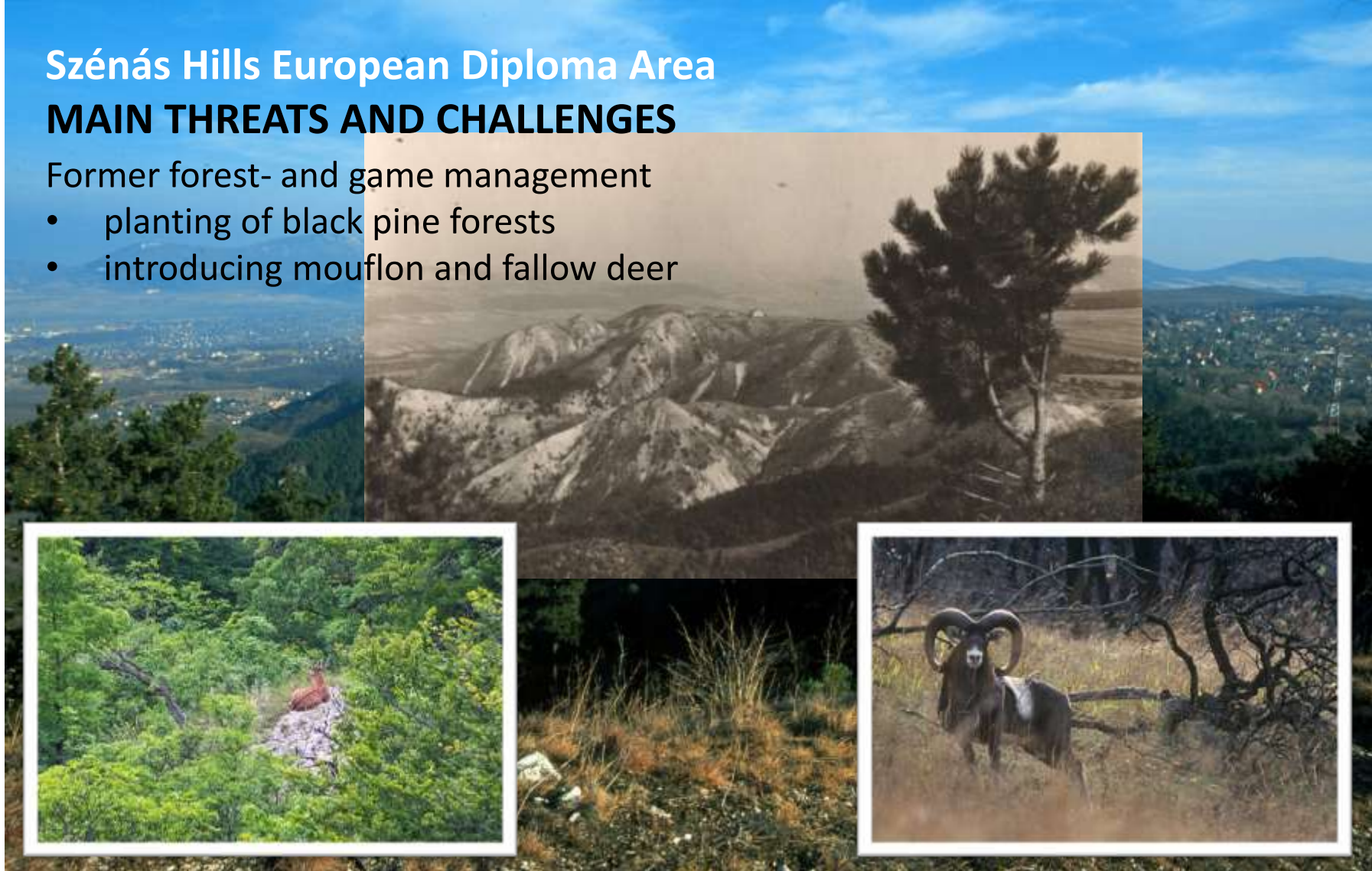


Szénás Hills European Diploma Area

MAIN THREATS AND CHALLENGES

Former forest- and game management

- planting of black pine forests
- introducing mouflon and fallow deer



Szénás Hills European Diploma Area

MAIN THREATS AND CHALLENGES

Proximity of settlements

Mass tourism Expectation of construction

Technical sports Illegal dumping of waste



Szénás Hills European Diploma Area

MAIN THREATS AND CHALLENGES

Former forest and game management

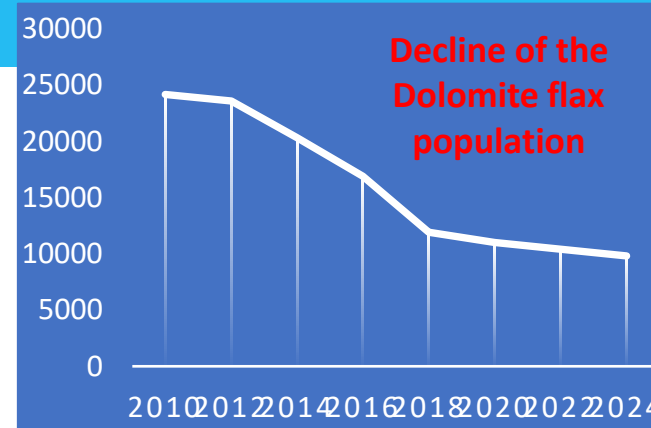
- Planting of black pine forests
- Introducing mouflon and fallow deer

Proximity of settlements

- Mass tourism, technical sports
- Expectation of construction
- Illegal dumping of waste
- Opposition of local residents to restrictions

Spread of invasive alien species

Climat change, drought



Cooperation with local governments

TRILATERAL COOPERATION AGREEMENTS



VOLUNTARY COMMITMENTS

The National Park Directorate

- monitors Dolomite flax and manages its habitat,
- operates the Dolomite Flax Visitor Centre and two nature trails,
- provides discounts for local schoolchildren on its programmes,
- publishes articles on nature conservation in local newspapers,
- guards the area together with foresters and local public guards,
- replaces Ailanthus trees, in cooperation with the municipality.

The municipality

- provides financial support for environmental education,
- provides cameras to guard the area.

The forestry company

- provides financial support for nature conservation management,
- carry out reducing the large game population and black pine,
- monitors the impact of the interventions.



Pilisszentiván



Piliscsaba



Nagykovácsi

Cooperation with the Pilis State Forest Company

WORKING AS PARTNERS IN JOINT EU TENDERS



Reducing the black pine and large game population



Removing Black pines
from the Dolomite flax habitat

Erosion barriers



Involving the students of the local
forestry vocational high school



Cooperation with NGO-s, companies and schools

VOLUNTEERWORK



- Team building for companies
- Community work for high school students
- Field training for university students

Cooperation with local residents

VOLUNTEER RANGERS



Training and exam

Volunteer rangers
help with conservation tasks and guarding



Cooperation with local farmers

WORKING WITH BEES AND BEE-KEEPERS

Setting up bee colonies...

Together with
local bee-keeper, citizen rangers,
journalist for the local newspaper
and rangers...



Attaching pollen-traps
on to the hives



Can bees help with pollination?



Cooperation with local farmers

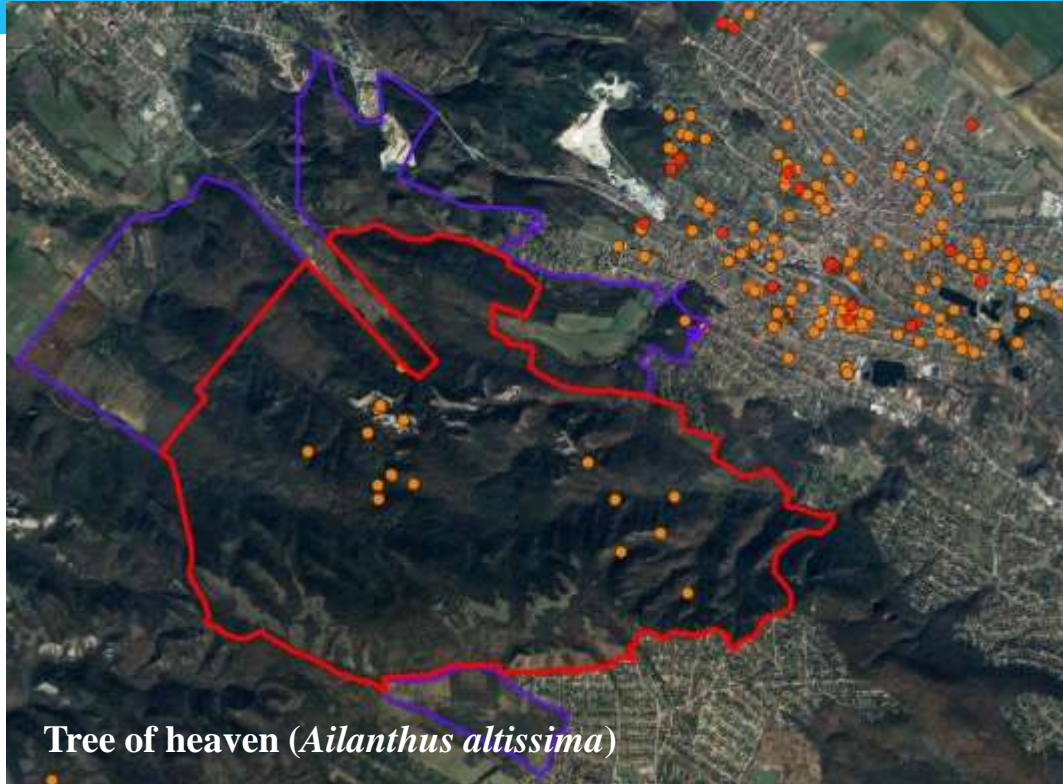
COMMUNITY GARDEN

An initiative of a local farmer:
establishing a community garden
on her own land,
in the Buffer Zone of the European
Diploma Area



Cooperation with local residents

AILANTHUS REPLACEMENT PROGRAMME



Ailanthus replacement programme:

Protecting both the European Diploma Area and the gardens from the spread of invasive trees.

- Assessing the Ailanthus trees with summer intership students
- Injection and removal of trees
- Planting of native trees or fruit trees

Cooperation with local nurseries and schools

Dolomite Flax Visitor Centre

- Situated in the centre of Pilisszentiván
- 5 environmental educators
- Important base for the programmes of local educational institutions



Cooperation with local educational institutions and NGO-s

Excursions for children and seniors

- 15 educational institutions in 3 municipalities
- 2 natural trails
- 4500 children per year

Water habitat on the
„Jági” nature trail



Annual excursion

for the Local History Association
of Pilisszentivan



Tourism history exhibition on the
„Nagy-Szénás” Nature Trail



Cooperation with local governments

Dolomite flax award

Dolomite flax
award



- established by the municipality of Pilisszentiván,
- are granted annually
- for the person who has done a lot for nature conservation in the village
- members of the Board of Trustees: local government, national park directorate, forestry company



Key issues

of the relationship with different stakeholders

1. Apart from the restrictions to participate in and benefit the local community.
2. Raising awareness and engagement among local residents and farmers, so that they take pride in outstanding assets.
3. Involving local people in conservation management tasks.



Thank you for your attention

