



DOĞA KORUMA VE MİLLİ PARKLAR GENEL MÜDÜRLÜĞÜ

General View of the Area

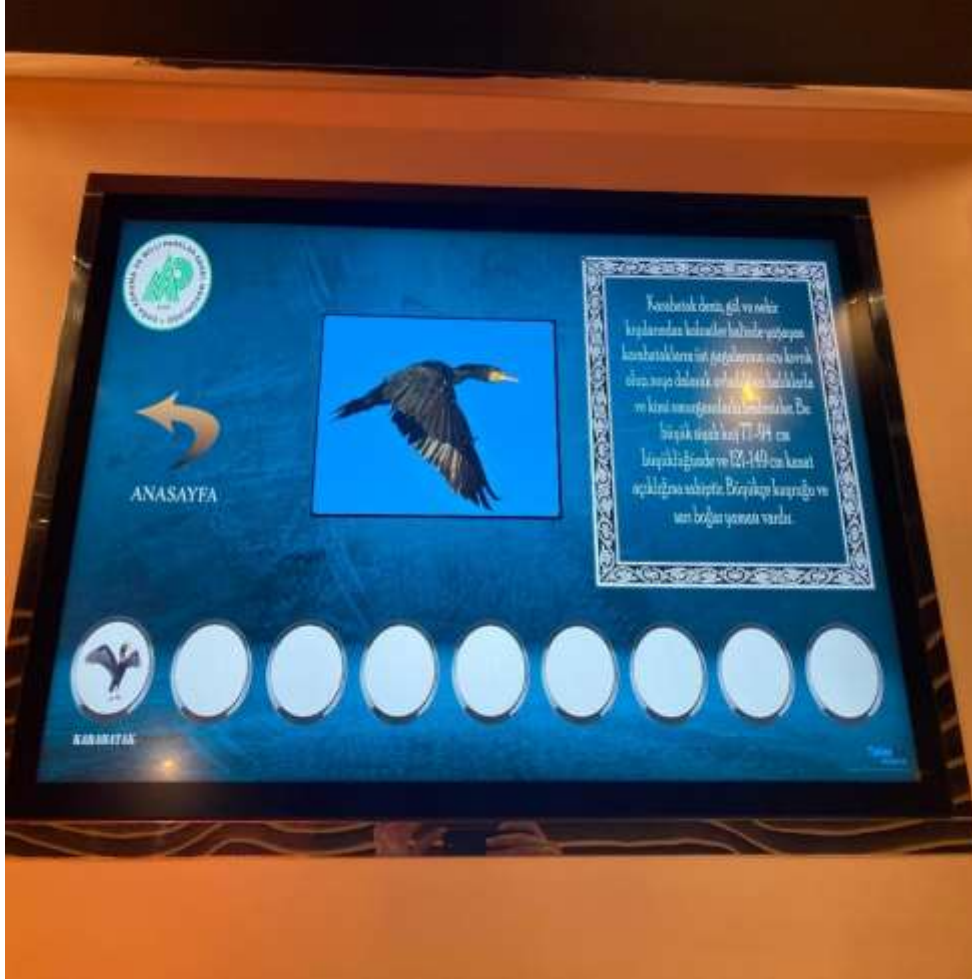


Entry Checkpoint





Exhibition Lounge



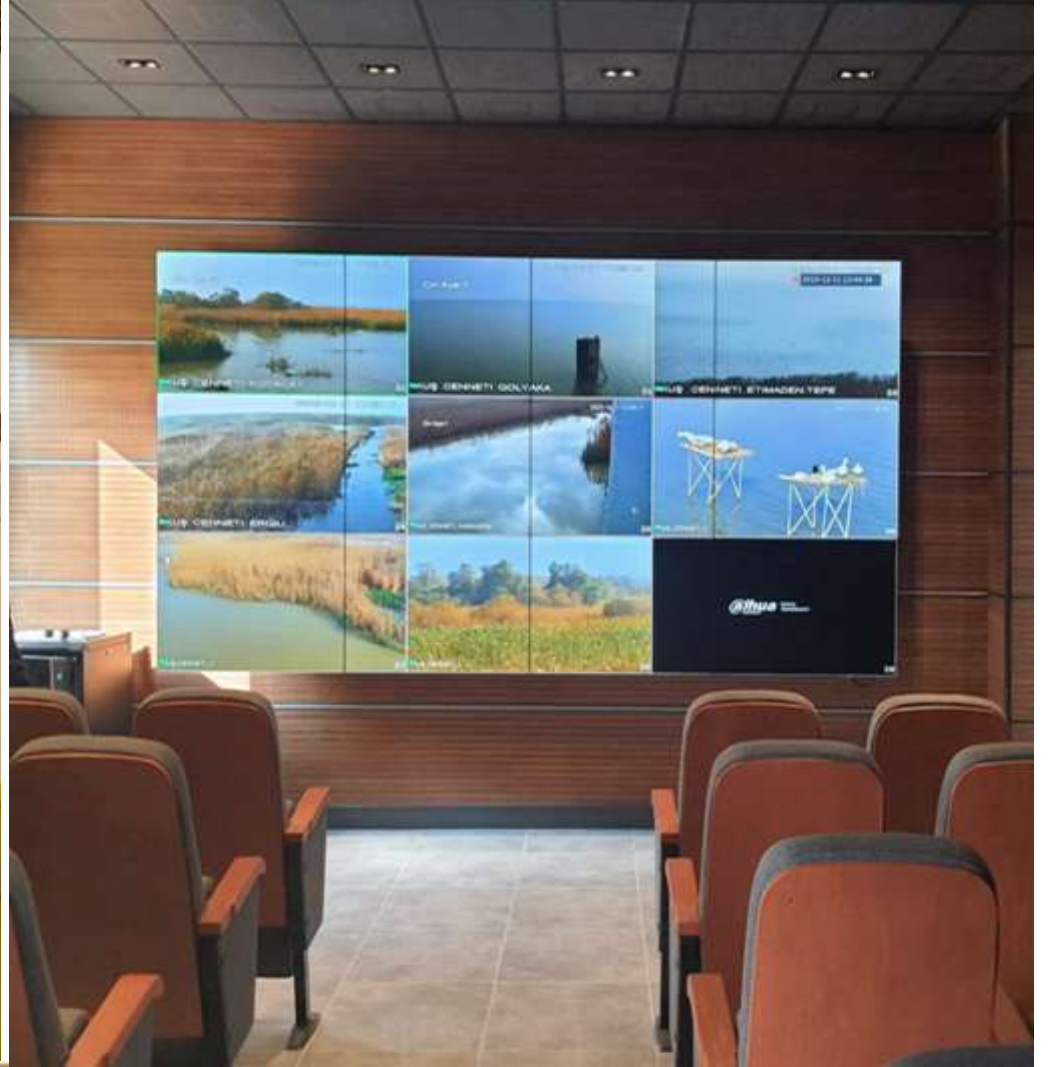


Image Tracking Center & Renewable Energy IP Cameras



Walking Path



Observation Tower, Direction and Information Signs





Sanitary Facility Complex



Breeding Platforms & Pier/Boat



Parking





4.A. CASE STUDY: NATURE TOURISM/ECO-TOURISM IN THE KUŞCENNETİ NATIONAL PARK, TÜRKİYE

Oya Bumin, City Planner,

Ministry of Agriculture and Forestry

General Directorate of Nature Conservation and National Parks

22 May 2025; Granada/SPAIN



Presentation Plan

- Introduction of Manyas Lake
- History of Manyas Kuşçenneti National Park
- Current and Possible Threats in Kuşçenneti National Park
- Efforts & Studies
- Contribution of the Council of Europe to the Area
- A Look Back and Forward

Introduction of Manyas Lake

- Its formation
- Transportation
- Climate
- Fauna & Flora
- Social and Economic Characteristics
- Its Other Significant Nature Sources



HISTORY OF MANYAS KUŞCENETİ NATIONAL NATIONAL PARK

It was discovered in 1938 by Curt Kosswig, of German origin, Head of the Zoology Department of the Faculty of Arts and Sciences at İstanbul University, and his wife Leonere Kosswig.

It was created to protect the resting places of migratory birds on the shores of Lake Manyas and to bring together the rich bird diversity and beautiful landscape with visitors.





HISTORY OF KUŞCENETİ NATIONAL PARK

In 1976, it was awarded the "Class A Diploma" by the European Council, which is given to the places where nature is best protected.

With Türkiye's ratification of the RAMSAR Convention, the National Park and Lake Manyas were included in the list of RAMSAR sites.

The plankton-rich water in the lake and around the National Park provides a diversity of wildlife.

105 of the 266 bird species regularly incubate in this region every year.





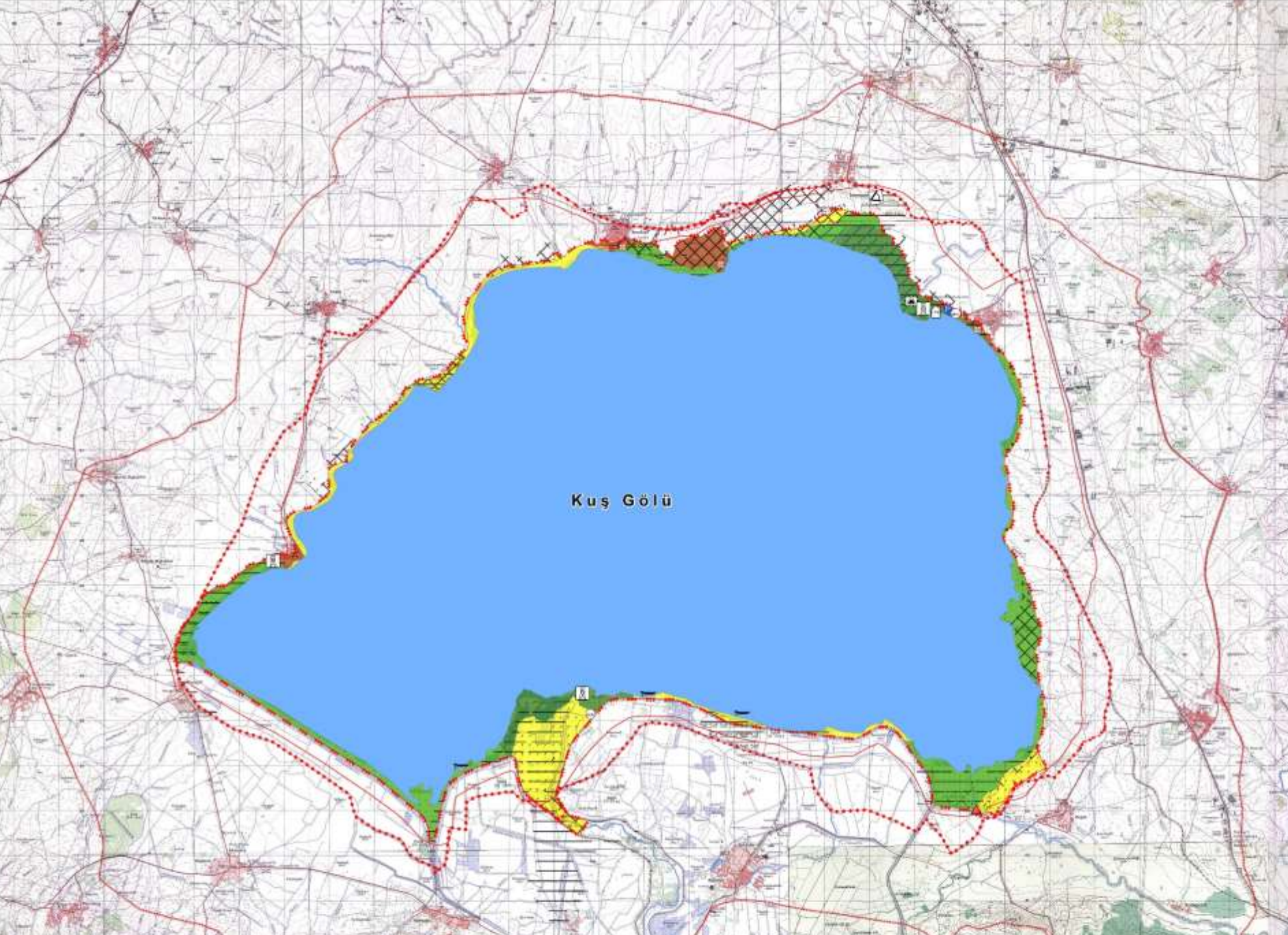
HISTORY OF KUŞCENETİ NATIONAL PARK

Kuşcenneti has a camera system that allows remote monitoring of waterfowl nesting areas.

Bird species such as Dalmatian pelican, cormorant, little cormorant, night heron, squacco heron, little egret, swift, spoonbill, whiskered tern and crested grebe continue to breed in the region.

The National Park, which also includes the Daskyleion Ancient City, one of the oldest settlements in the world, hosts many visitors every year.





GÖSTERİM

SINIRLAR

- Mülk Sınırı
- 1. Derece Doğal Sınırı
- Hemzar Sınırı
- Antiklopik Sınırı
- Tampon Bölge Sınırı

DOĞAL YAPI

- Göl

ULAŞIM

- Yürüyüş Yolu

TEKNİK ALTYAPI

- Elektrik İstasyonu

MÜLKİYET

- Kamu Mülkiyeti
- Özel Mülkiyet
- Belediye Mülkiyeti
- Mera Alanı

BÖLGELEME VE KULLANIM KARARLARI

- Mülak Koruma Bölgesi
- Hassas Koruma Bölgesi
- Sürdürülebilir Kullanım Bölgesi
- Kuş Gözlem Kulesi
- Kuş gözlem yolu (Tüneli)
- Manzara Seyir Noktası
- Kayık yamağına yeri
- İkizce
- Mera Alanı
- Tarım Alanı
- Kontrolü Kullanım Bölgesi
- Giriş kontrol ünitesi
- İdari ve Ziyaretçi Merkezi
- Otopark

"Plan üzerindeki işaretler sembolik olarak yerleştirilmiştir. Yer seçimi uygulama planları ile projeler ile yapılacaktır. Bu harita üzerinden ölçü alınarak uygulama yapılamaz. Arazî uygulaması yapılabilmesi için alt ölçekli planların projelerin tamamlanması gerekmektedir."



TC
ORMAN VE SU İŞLERİ
BAKANLIĞI
DOĞA KORUMA VE MİLLİ PARKLAR
GENEL MÜDÜRLÜĞÜ



KUŞCENNETİ MİLLİ PARKI
UZUN DEVRELİ GELİŞME PLANI

Milli Parklar Dairesi Başkanlığı
Beştepe Mahallesi Alparslan
Türkeş Caddesi

ÖLÇEK



SUPPORT AND COLLABORATION IN THE AREA

- Kuşçeneti National Park Area Chief,
- Bandırma Governorship,
- Bandırma Municipality,
- Local People...



TOURISM IN THE KUŞCENETİ NATIOAL PARK

A visitor who came to see the Bird Paradise National Park said that they were curious about the National Park because they saw it on social media. He stated that they liked the Park very much and stated, "This is a family-friendly place, I recommend everyone to come."

Another visitor said that she came to Kuşcenneti National Park with his family and said, "There is a bird observation tower here. We went up here and observed the birds. This is a place in nature, the view is wonderful. We can recommend people from all over Türkiye to come here and see it. This is an environment where you can spend good time with your family."



NATIONAL PARK CELEBRATES WITH BIRDS

Guests can follow birds with the Bird Observation Tower and 8 live cameras, and get information about birds in the renovated visitor building.

Guests can see the richness of birds in the National Park by visiting the hall where 17 bird sculptures made of polycarbonate and 26 bird taxidermy (stuffing dead animals) are located.

Visitors also have the opportunity to visit and examine the hall where pictures of birds made by students are exhibited.



CONTRIBUTION OF THE EUROPEAN COUNCIL (European Council Visit, 2003)

...I told him that not renewing this Diploma would mean that we would lose hope for nature conservation goals here. When I said that returning it would strengthen the hands of nature conservationists, he told me that he would write a report to the Council of Europe regarding the renewal of the Diploma, but asked me not to tell the National Park administrators and the press so that the improvement and infrastructure development works would not be disrupted.

After about 1.5 years, the Chief Engineer of Balıkesir National Park at the time called and excitedly told me that the suspension status of the Diploma had been lifted.





LOOK BACK AND FORWARD IN KUŞADASI NATIONAL PARK

STUDIES BY KOSSWIG AND HIS TEAM

- Convincing the villagers of the importance of the wealth they possess,
- To draw the attention of the authorities to the Bird Sanctuary,
- To initiate scientific research,
- To provide a boat, a watchtower, a guardhouse for observation,
- To introduce Bird Paradise domestically and abroad,
- Increasing the number of trees so that birds can live comfortably and, come there every year to incubate their eggs,
- Expanding the reed area,



LOOK BACK AND FORWARD IN KUŞÇENETİ NATIONAL PARK

STUDIES BY KOSSWIG AND HIS TEAM

- To control the entry of fishermen, tourists and hunters to the Area,
- To make this place an official organization and find management staff,
- Expanding the reed area,
- To carry out the necessary biological studies.



PRESENT

-There are 1 Chief who is a Veterinarian, 1 Forestry Engineer, 1 Technician Responsible for Hunting and Wildlife, 1 Forest Protection Officer, 1 Office Personnel, 1 Driver and totally 6 workers including 1 Driver and other 5 Agriculture Workers,

- There is a National Species Action Plan for the "Dutchy Pelican" prepared in 2019 and revised in 2024

-There is a Multi-Species Action Plan for 5 Duck Species,

The White-headed Duck is monitored within the scope of National Biodiversity Studies and is reported to the Center (General Directorate of Nature Conservation and National Parks) every 3 months,

-Reports on monitoring of duck species other than the White-headed Duck are made on a 6-months or annual basis,

-Activities such as bird watching, scientific research and biodiversity training are carried out in Bird Paradise,

-Visitors can see life-size bird statues and taxidermy in Exhibition Hall of Administration and Visitor Center and get information about the bird species in the area,

-They can get information about the natural life of animals in the Area by examining the images get from the cameras around the Lake,





PRESENT

-The White-headed Duck is monitored within the scope of National Biodiversity Studies and is reported to the Center (General Directorate of Nature Conservation and National Parks) every 3 months,

-Reports on monitoring of duck species other than the White-headed Duck are made on a 6-months or annual basis,

-Activities such as bird watching, scientific research and biodiversity training are carried out in Bird Paradise,

-Visitors can see life-size bird statues and taxidermy in Exhibition Hall of Administration and Visitor Center and get information about the bird species in the area,

-They can get information about the natural life of animals in the Area by examining the images get from the cameras around the Lake,





PRESENT

- There is a disabled toilet for disabled visitors within the area, a ramp at the building entrances and a disabled elevator in the observation tower,
- There are 3 fixed binoculars in the Bird Watching Tower, and visitors can observe the breeding platforms on the Lake and the bird nests in the willow trees....,



THREATS IN THE AREA

- Insuficiencies in Integrated Management of Wetland Area,
- Water Pollution,
- Changes in Water Level,
- Wind Turbines,
- High Voltage Lines,
- Infrastucture and Superstructure Deficiencies,
- Deficiencies in Management Capacity..,



FUTURE/DISCUSSIONS

- WHAT SUGGESTS LONG-TERM DEVELOPMENT AND WETLAND AREA MANAGEMENT PLAN?
- TOURISM OBJECTIVES.



THANK YOU

