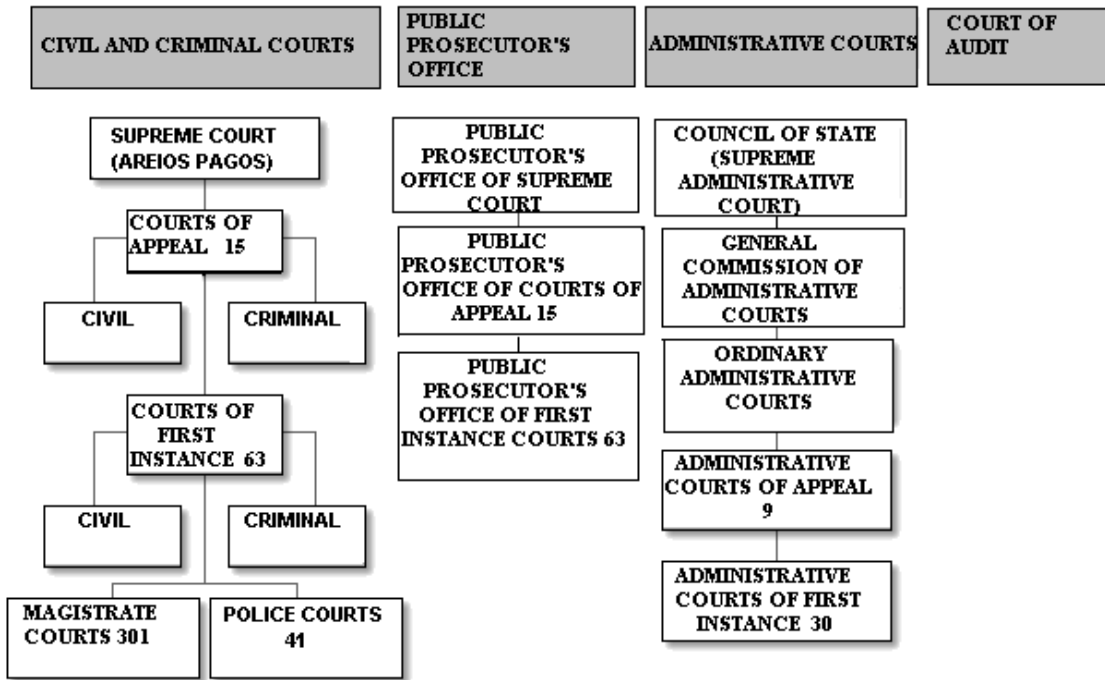


ORGANIZATION CHART OF COURTS IN GREECE



Further to organization chart please note the following concerning the cases of divorce, employment dismissal, robbery and intentional homicide:

- a) **Litigious divorce cases:** These cases are heard at first instance by the Department of Ordinary Procedure of Multi-Member First Instance Court (Family Court) and on appeal by the competent Court of Appeal.
- b) **Employment dismissal cases:** Cases concerning dismissal are introduced as special procedure in the Department of Labor Disputes of the Single-Member First Instance Court and on appeal by the competent Court of Appeal.
- c) **Robbery:** These cases are heard at first instance by the Mixed Jury and on appeal by the competent Criminal Court of Appeal.
- d) **Intentional homicide:** These cases are heard at first instance by the competent Mixed Jury and on appeal by the competent Criminal Court of Appeal.

Reversals upon petition of the above final decisions of the Civil and Criminal Courts belong to the jurisdiction of the Supreme Civil and Criminal Court (Areios Pagos).