



HM Inspectorate  
of Probation

# Using data to improve probation policy, delivery and practice

Dr Robin Moore

Head of Research & Data Analysis

September 2025



HM Inspectorate  
of Probation

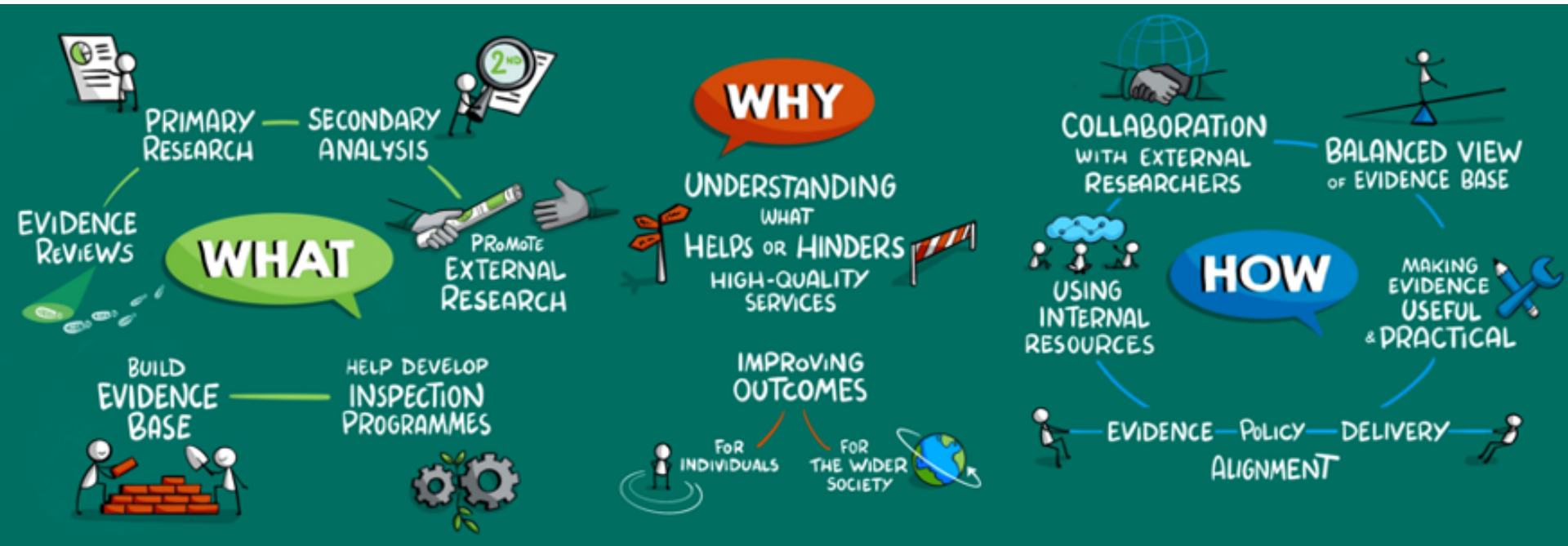
## **High-quality probation and youth justice services that change people's lives for the better**

HM Inspectorate of Probation is the independent inspector of probation and youth justice services in England and Wales. We set the standards that shine a light on the quality and impact of these services. Our inspections, reviews, research and effective practice products provide authoritative and evidence-based judgements and guidance. We use our voice to drive system change, with a focus on inclusion and diversity. Our scrutiny leads to improved outcomes for individuals and communities.

# Research & Data Analysis Team



HM Inspectorate  
of Probation



# Inspection data sources



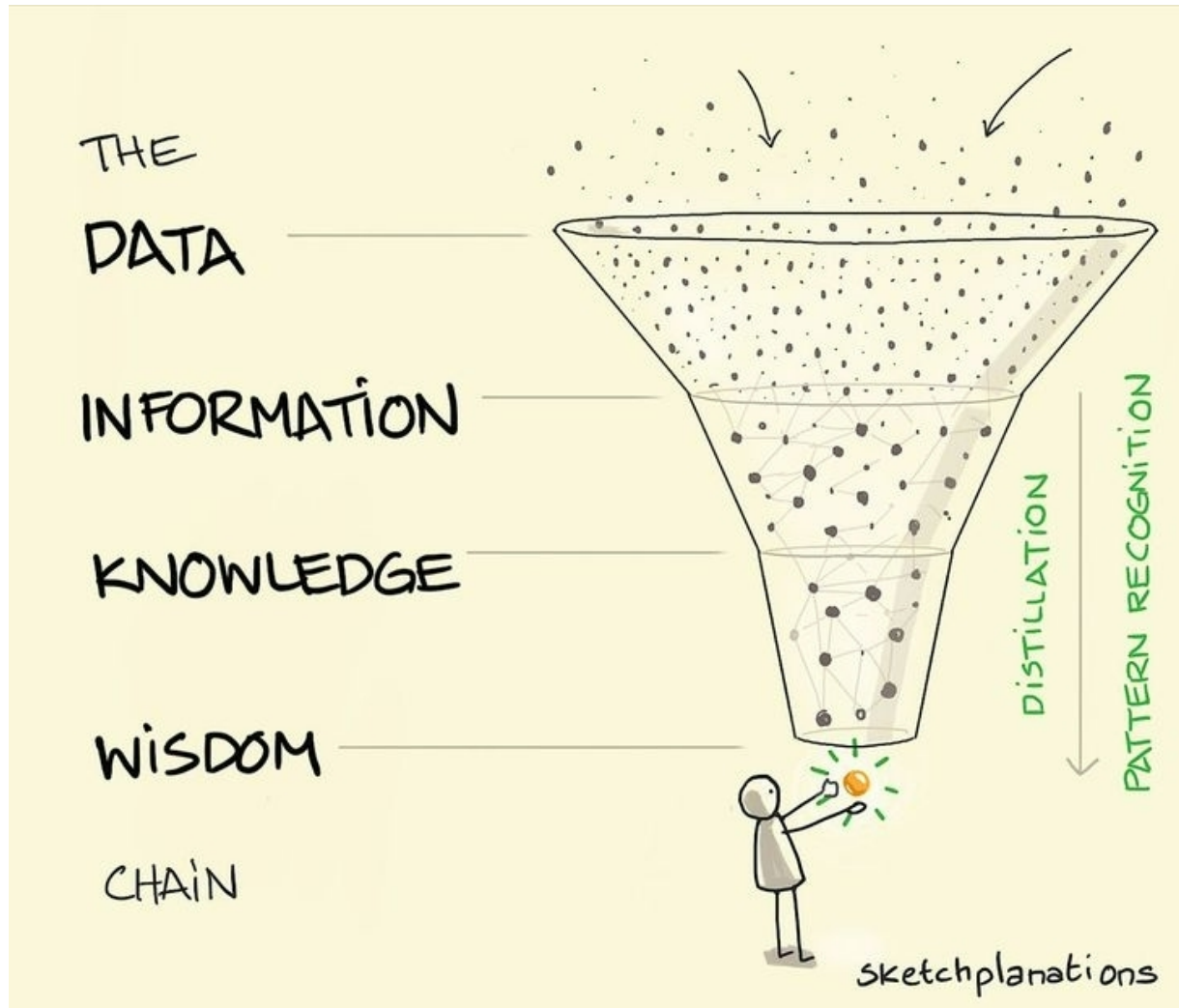
HM Inspectorate  
of Probation

## **Quantitative data**

- Evidence in advance (information requested on announcement)
- Local area background stats
- Staff survey
- Case assessments
- Service user survey

## **Qualitative data**

- Evidence in advance (information requested on announcement)
- Staff survey
- Case assessments
- Interviews/focus groups
- Service user interviews

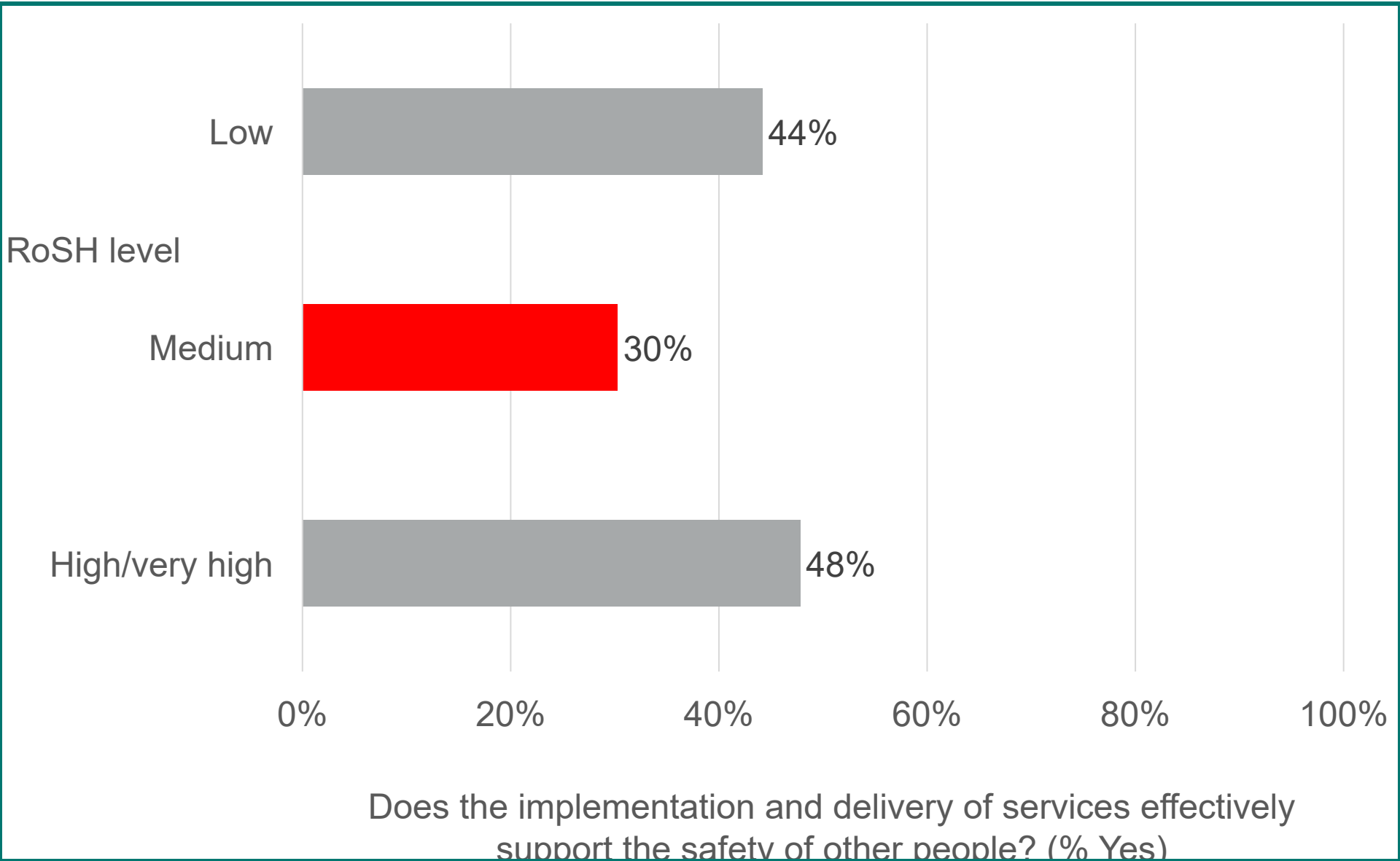


	Engagement			Desistance			Public Protection		
Date published	Assessment	Planning	Implementation	Assessment	Planning	Implementation	Assessment	Planning	Implementation
Feb 2024		✗		✓	✓	✗	✗	✗	✗
		✗		✗	✗	✗	✗	✗	✗
Mar 2024	✗	✗	✓	✓	✗	✗	✗	✗	✗
	✗	✗	✗		✗	✗	✗	✗	✗
		✗	✗	✓		✗	✗	✗	✗
May 2024			✓	✓	✓		✗		✗
		✗	✗	✓	✓	✗	✗	✗	✗
Jul 2024		✗	✗	✓		✗	✗	✗	✗
			✓	✓	✓		✗	✗	✗
		✗				✗	✗	✗	✗
			✓	✓	✓		✗		✗
Aug 2024	✗	✗	✗	✓		✗	✗	✗	✗
					✓	✗	✗		✗
Oct 2024	✗	✗	✗			✗	✗	✗	✗
		✗	✗	✓	✓	✗	✗		✗
				✓	✓	✗	✗	✗	✗
	✓	✓		✓	✓	✗			✗
			✓		✓	✗	✗	✗	✗
Nov 2024	✗	✗				✗	✗	✗	✗
	✗	✗			✗	✗	✗	✗	✗
Dec 2024	✓	✓	✓	✓	✓	✗	✗	✗	✗
	✓	✓		✓	✓	✗	✗	✗	✗
			✓	✓	✓		✗		✗
			✓	✓	✓	✓	✗	✗	✗
May 2025			✓	✓	✓		✗	✗	✗
			✓	✓	✓	✓	✗		
		✗			✓	✗	✗	✗	✗
					✓	✗	✗	✗	✗
				✓	✓	✗	✗	✗	✗
Jun 2025	✓			✓		✗	✗	✗	✗

# Effectiveness of delivery upon supporting the safety of other people, by RoSH level



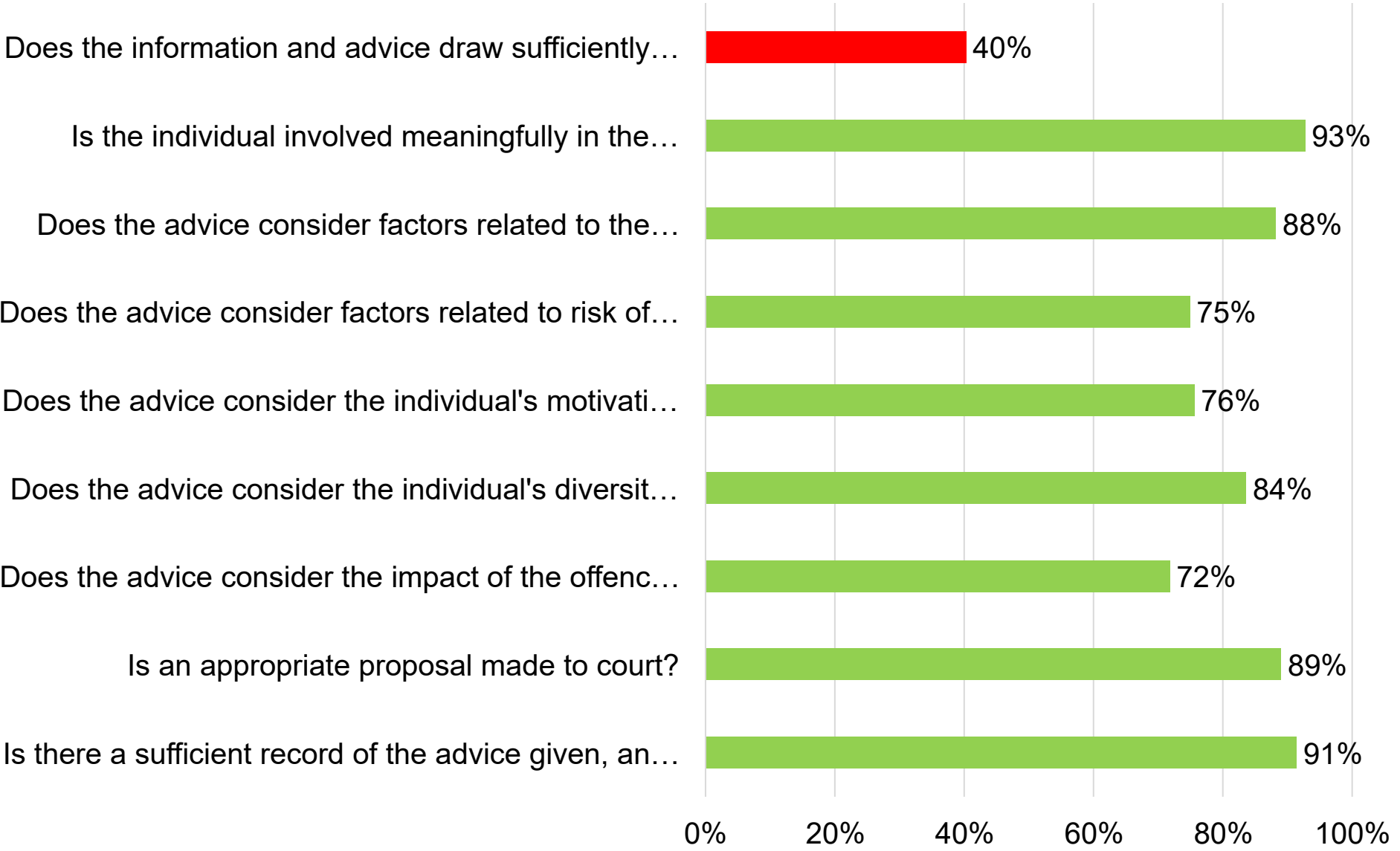
HM Inspectorate  
of Probation



# The quality of pre-sentence information and advice provided to courts



HM Inspectorate  
of Probation





# Examining the links between probation supervision and positive outcomes –



Delivery builds upon the individual’s strengths or enhances protective factors

Yes      No      No relevant strengths or protective factors

# Key questions re. data collection



HM Inspectorate  
of Probation

1. What type of data is required and for whom?
2. Who or what can provide this data?
3. How will the data be collected and over what timeframes?
4. What formats will the data be required in?
5. How will the data be transferred and stored?
6. Is there a need to collect 'personal data'? If so, think data protection!
7. How will the data be quality assured and analysed?

# Key questions re. data collection



HM Inspectorate  
of Probation

**5W1H**



**WHO**



**WHAT**



**WHEN**



**WHERE**



**WHY**



**HOW**



VS.

## QUANTITATIVE DATA

ANSWERS "WHAT" "WHERE"  
"HOW" "WHEN" AND "WHO"

---

Based on numbers

Larger sample size

Statistical analysis

Objective

Closed-ended questions

To validate hypothesis

## QUALITATIVE DATA

ANSWERS "WHY"  
(WHICH IS VERY IMPORTANT)

---

Based on opinions and experiences

Smaller sample size

Interviews & observation

Subjective

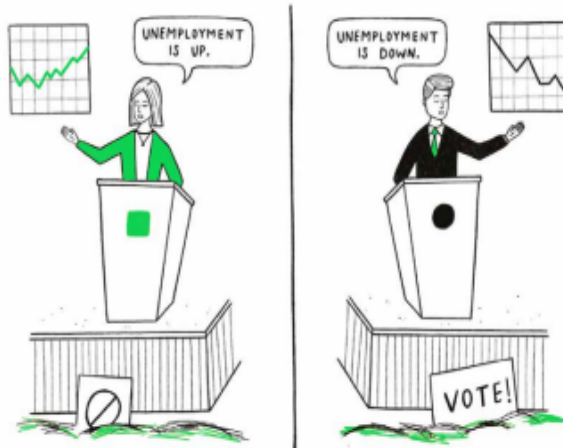
Open-ended questions

To generate hypothesis  
or develop ideas

# Analytical pitfalls



HM Inspectorate  
of Probation



## Cherry Picking

Selecting results that fit your claim and excluding those that don't.

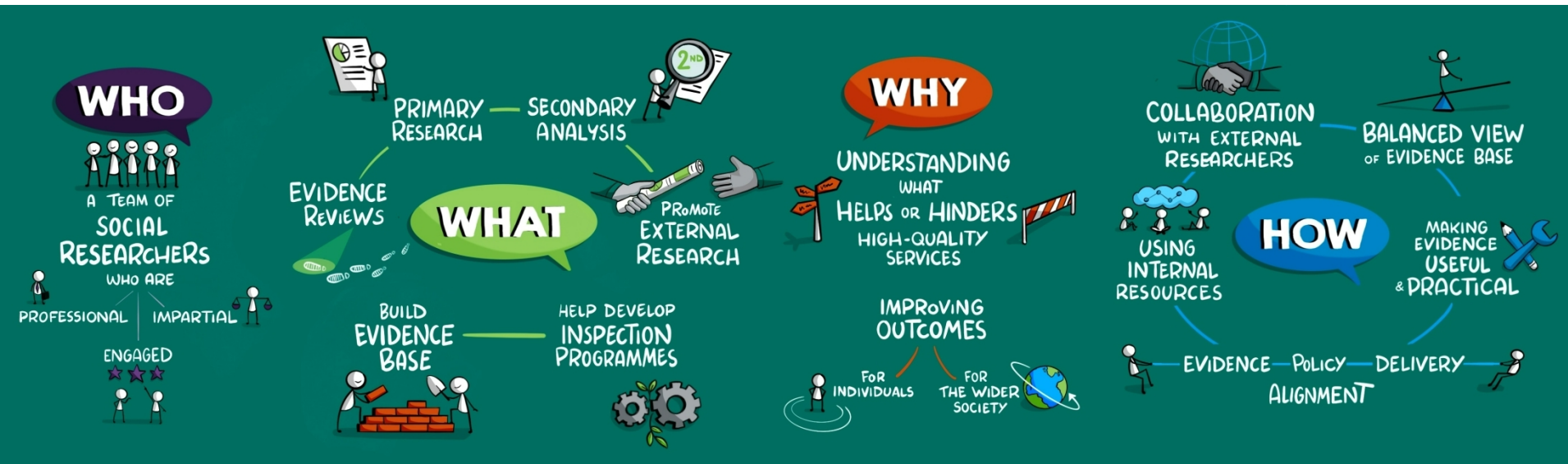


## Data Dredging

Repeatedly testing new hypotheses against the same set of data, failing to acknowledge that most correlations will be the result of chance.



HM Inspectorate  
of Probation



[HMIProbationResearch@hmiprobation.gov.uk](mailto:HMIProbationResearch@hmiprobation.gov.uk)



<https://hmiprobation.justiceinspectorates.gov.uk/our-research/>



<https://www.linkedin.com/in/robin-moore-7046637/>