

CONNECTING THE ARCHAEOLOGICAL SITES TO THEIR LANDSCAPE
A Three-Step Method to Unveil and Enhance Landscape Values through the Design of Cultural Routes



**Rebeca
MERINO DEL RÍO**
University of Seville
(Spain)

CONNECTING THE ARCHAEOLOGICAL SITES TO THEIR LANDSCAPE
A Three-Step Method to Unveil and Enhance Landscape Values through the Design of Cultural Routes



El Guadalquivir –la corta de la Cartuja– a su paso por San Juan de Aznalfarache. Vista desde el paseo Mirador, 2019. Fotografía de la autora.

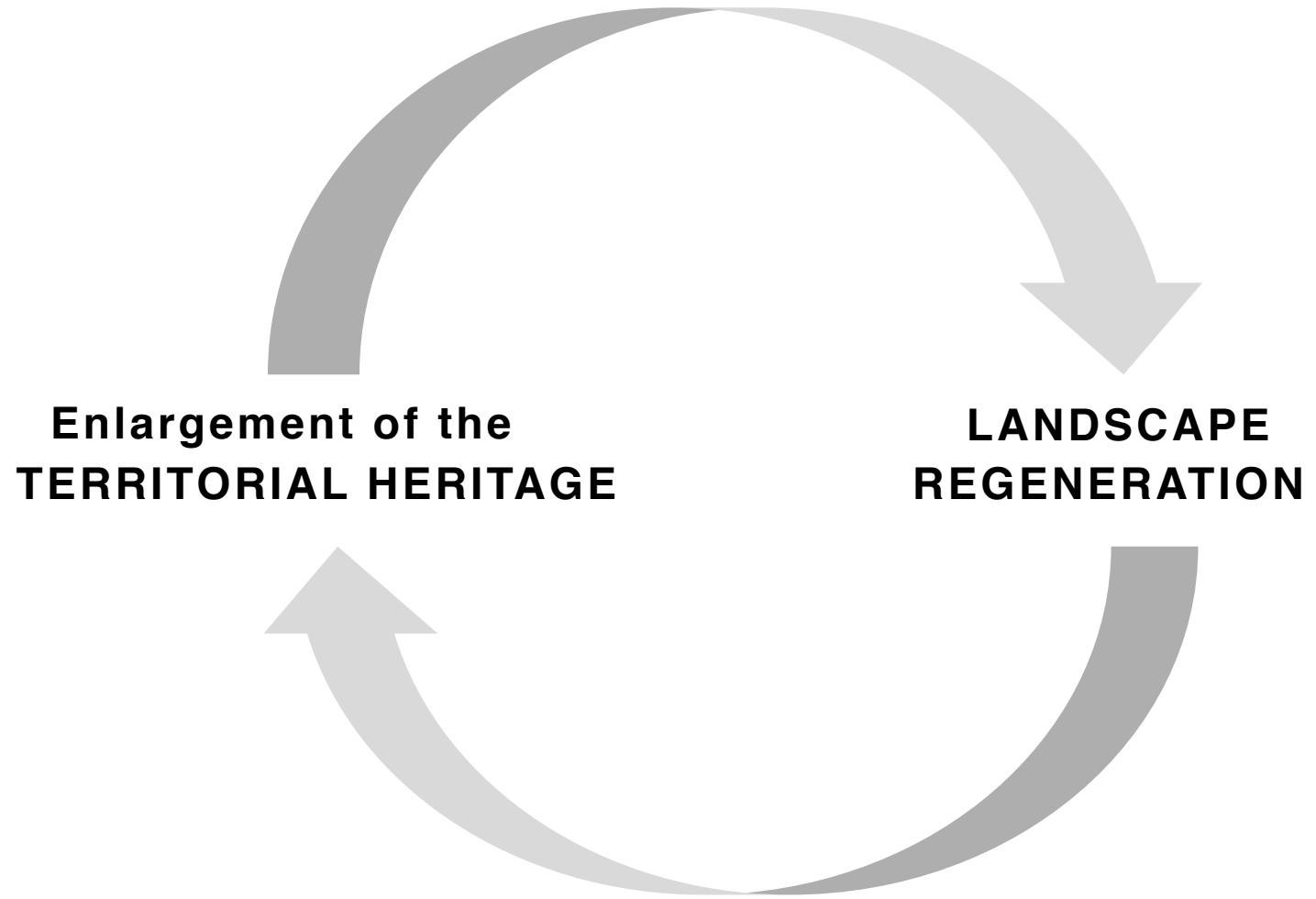
CONNECTING THE ARCHAEOLOGICAL SITES TO THEIR LANDSCAPE
A Three-Step Method to Unveil and Enhance Landscape Values through the Design of Cultural Routes



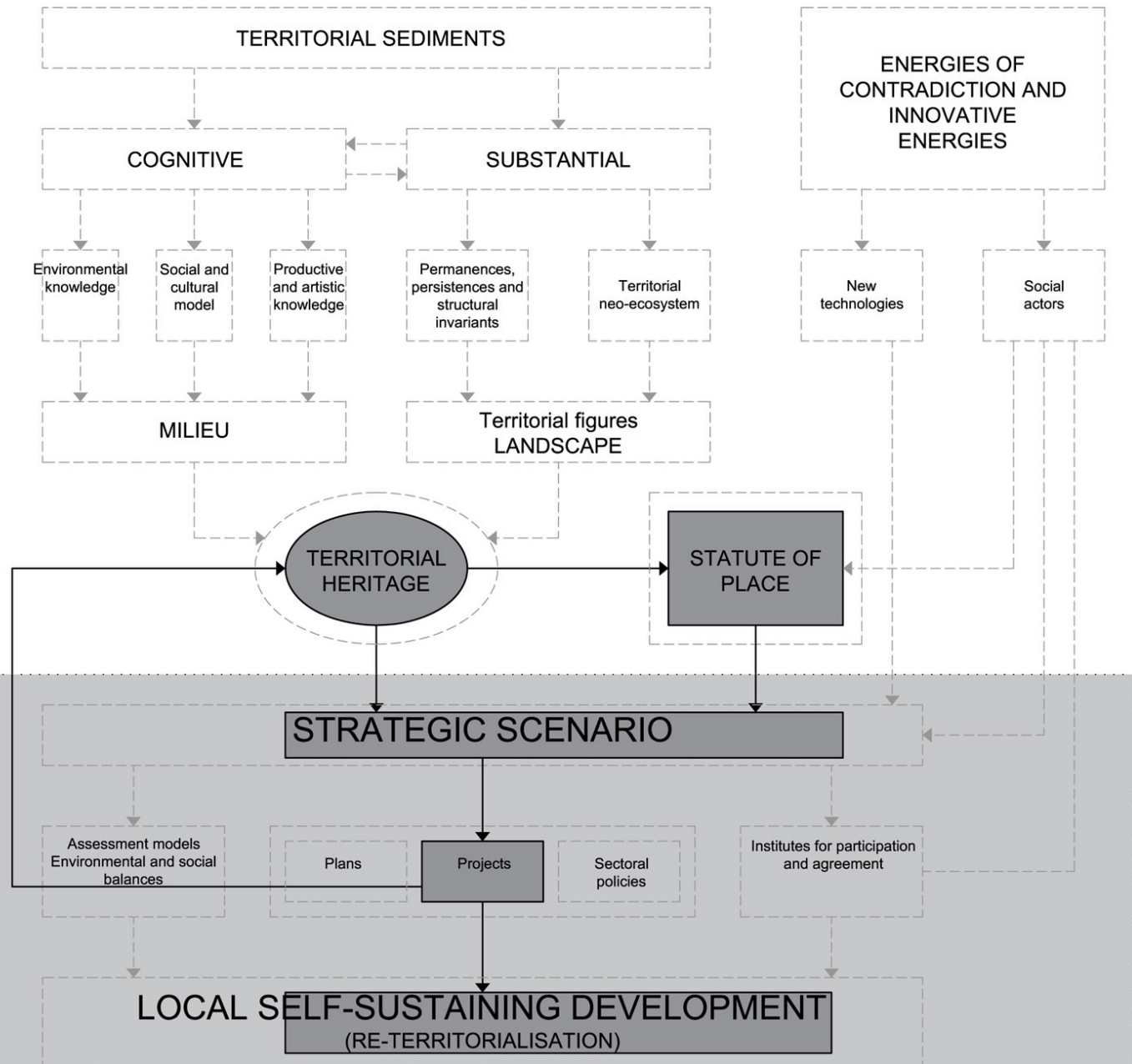
De arriba abajo:
a. Paso del cordel de Gambogaz junto al cortijo que le da nombre. Fuente: Centro de Estudios Paisaje y Territorio, Universidad de Sevilla.
b. Cordel de Gambogaz a su paso por el monasterio de San Isidoro del Campo. Fuente: Centro de Estudios Paisaje y Territorio, Universidad de Sevilla.

- [1] In this presentation it is proposed the sequence of sections and processes needed to direct the design of **cultural routes** towards the **restoration** of the **dynamics of landscape formation**.
- [2] It is provided evidence for the correspondence between this three-step method for designing cultural routes and the **analytical methodology for an integrated plan of the territory** developed by the territorialist school.
- [3] The results of its application in the area of influence of the archaeological site of *Italica* are used to illustrate the process.

CONNECTING THE ARCHAEOLOGICAL SITES TO THEIR LANDSCAPE
A Three-Step Method to Unveil and Enhance Landscape Values through the Design of Cultural Routes



CONNECTING THE ARCHAEOLOGICAL SITES TO THEIR LANDSCAPE
A Three-Step Method to Unveil and Enhance Landscape Values through the Design of Cultural Routes



Alberto Magnaghi, la metodología analítica para la proyección identitaria del territorio, 2011. Traducción del esquema propuesto por Magnaghi en 2011. Elaboración de la autora. Otras fuentes: POLI, D. Rappresentazioni identitarie e processi partecipativi per la salvaguardia del patrimonio territoriale. En: VOLPIANO, M. (A cargo de). *Territorio storico e paesaggio: conservazione progetto gestione*. Turin: L'Artistica Editrice, 2011, p. 57.

ANALYTICAL METHODOLOGY FOR AN INTEGRATED PLAN OF THE TERRITORY

[1] Detection and identification of the **territorial heritage**:
the analytical description of the place identity.

La metodología analítica para la proyección identitaria del lugar

Patrimonio territorial

1. Descripción analítica de la identidad del lugar

1.1. Historia del territorio

1.2. Detección e identificación del patrimonio territorial
[Reconocimiento de sedimentos materiales y cognitivos]

ANALYTICAL METHODOLOGY FOR AN INTEGRATED PLAN OF THE TERRITORY

[1] Detection and identification of the **territorial heritage**: the analytical description of the place identity.

[2] After this, **place order** should be interpreted. The implementation of the interpretation of place order in the analytical methodology for an integrated plan of the territory takes the form of **[2.1]** the extraction of the structural invariants and **[2.2]** the rules for the transformation of the territorial heritage.

La metodología analítica para la proyección identitaria del lugar

Patrimonio territorial

1. Descripción analítica de la identidad del lugar

1.1. Historia del territorio

1.2. Detección e identificación del patrimonio territorial
[Reconocimiento de sedimentos materiales y cognitivos]

Ordenamiento del lugar

2. Interpretación de la identidad de larga duración

2.1. Invariantes estructurales

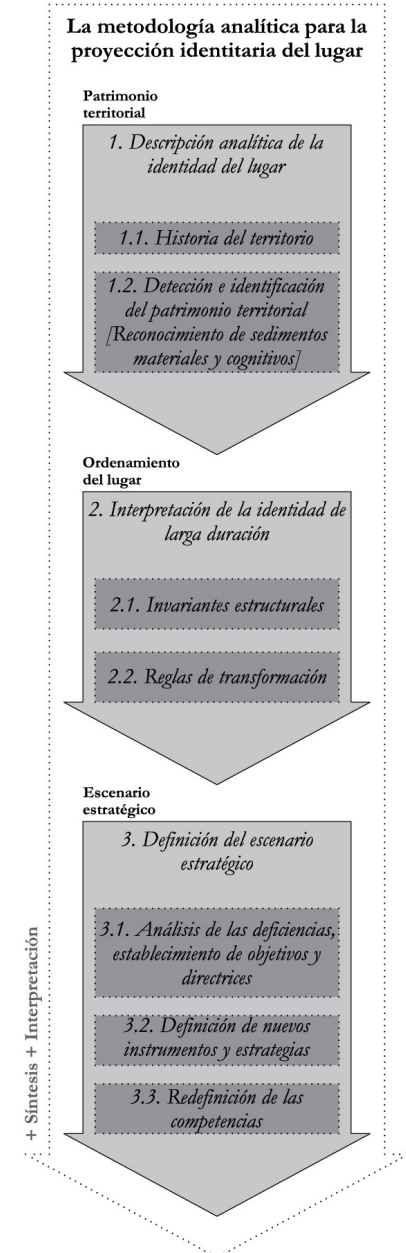
2.2. Reglas de transformación

ANALYTICAL METHODOLOGY FOR AN INTEGRATED PLAN OF THE TERRITORY

[1] Detection and identification of the **territorial heritage**:
the analytical description of the place identity.

[2] After this, **place order** should be interpreted. The
implementation of the interpretation of place order in the analytical
methodology for an integrated plan of the territory takes the form of
[2.1] the extraction of the structural invariants and **[2.2]** the rules for
the transformation of the territorial heritage.

[3] The definition of the **strategic scenario**. It implies the
redefinition of **[3.1]** the instruments, **[3.2]** the assessment models
and **[3.3]** the institutes for the participation aimed at making progress
towards a self-sustaining local development.



CONNECTING THE ARCHAEOLOGICAL SITES TO THEIR LANDSCAPE
A Three-Step Method to Unveil and Enhance Landscape Values through the Design of Cultural Routes



De arriba a abajo:
a. Fermín Guisado Castejón, Yacimiento La Fábrica (Guillena), 2012. Fuente: Delegación Provincial de Cultura de Sevilla.
b. Vista de Mesa Redonda desde el norte de Villaverde del Río. Fuente: Ayuntamiento de Villaverde del Río. <http://www.villaverdedelrio.es/es/municipio/historia/>

A THREE-STEP METHOD FOR DESIGNING CULTURAL ROUTES: SCOPE OF THE SECTIONS

[1] Synthetical structural descriptions

[2] Identity interpretations

[3] Strategic scenario

A THREE-STEP METHOD FOR DESIGNING CULTURAL ROUTES: SCOPE OF THE SECTIONS

[1] Synthetical structural descriptions

[regional and trans-regional scale]

[2] Identity interpretations

[geographical scale of the landscape area or areas affected by the project of the cultural routes]

[3] Strategic scenario

[local scale*]

(*) In this research the application of the method concentrates on the areas of influence of the archaeological sites at a local scale

CONNECTING THE ARCHAEOLOGICAL SITES TO THEIR LANDSCAPE
A Three-Step Method to Unveil and Enhance Landscape Values through the Design of Cultural Routes



Conjunto arqueológico de Itálica. Vista desde el recinto protegido hacia el municipio de Santiponce, 2019. Fotografía de la autora.

A THREE-STEP METHOD FOR DESIGNING CULTURAL ROUTES: STRUCTURE

[1] Synthetical structural descriptions

[1.1] Analysis of the territorialisation processes

CONNECTING THE ARCHAEOLOGICAL SITES TO THEIR LANDSCAPE
A Three-Step Method to Unveil and Enhance Landscape Values through the Design of Cultural Routes

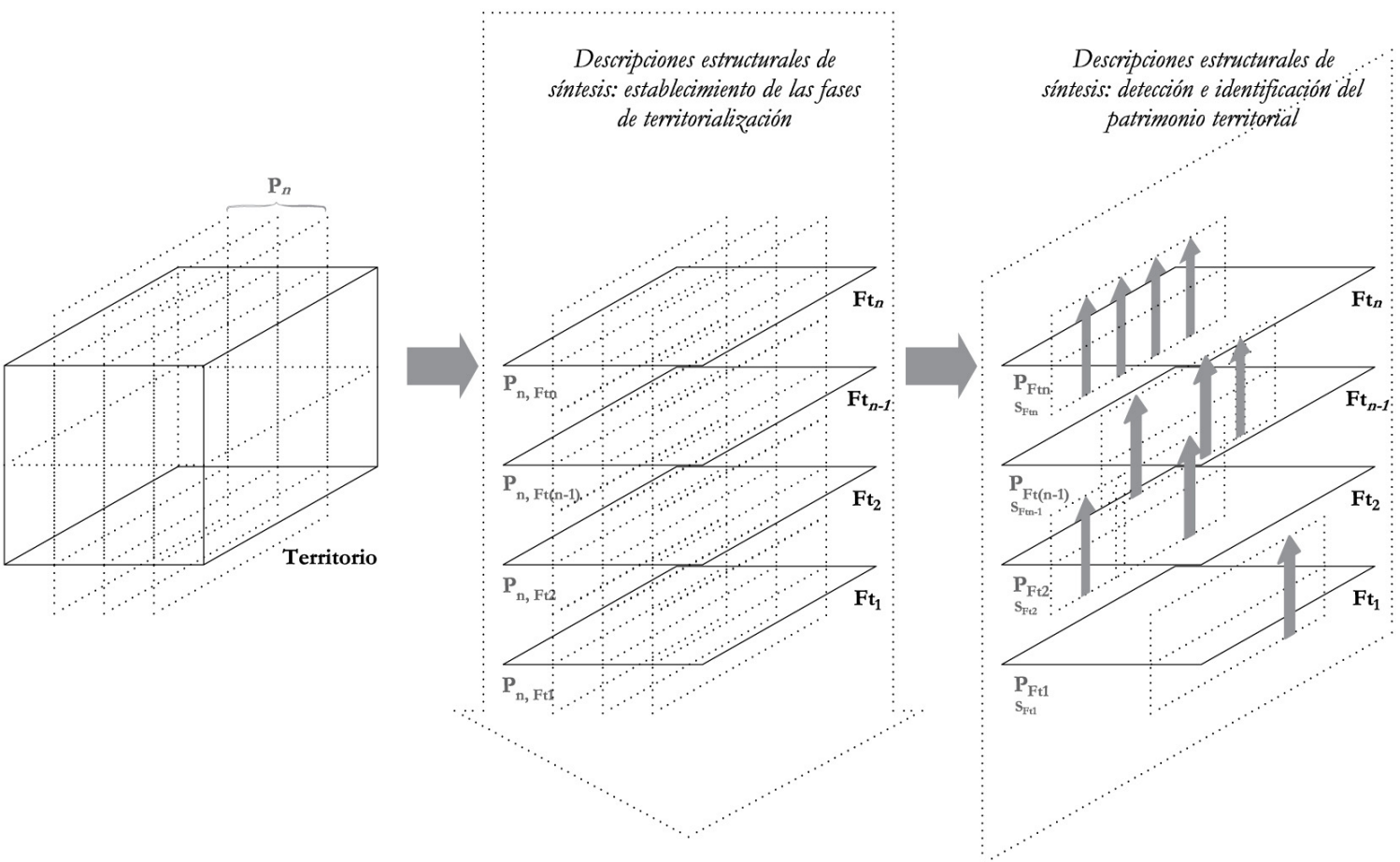


Anónimo, *Ptolomy, Geographia* (TLG 0363.009), finales del s. XIV. Manuscrito, 435 x 310 mm, escala indeterminada. Fuente: The British Library. Colección: The Burney Manuscripts [Referencia: Burney MS 111].

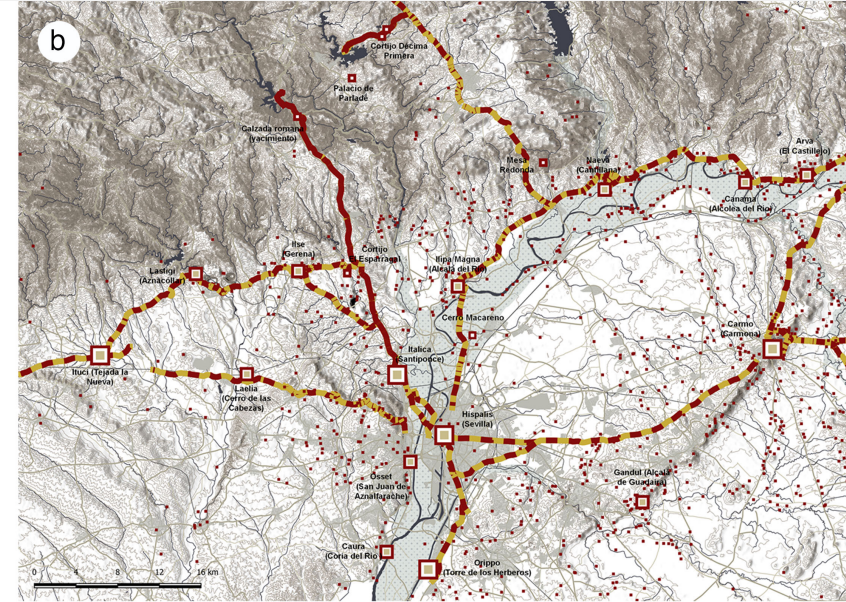
Hieronýmo Chiaves y Abraham Ortelius, *Hispalensis conventus delineatio*, 1579. Grabado coloreado, 35 x 46 cm, ca. 1:600.000. Fuente: Biblioteca Nacional de España [Signatura: MR/33-41/795/2].

Matias José de Figueroa, *Mapa De el Plano del Voraz, Asombroso y Asolador Río Guadalquivir...*, 1745. Manuscrito coloreado, 47 x 131 cm. Fuente: Archivo Municipal de Sevilla [Signatura: Pl. II-8-23].

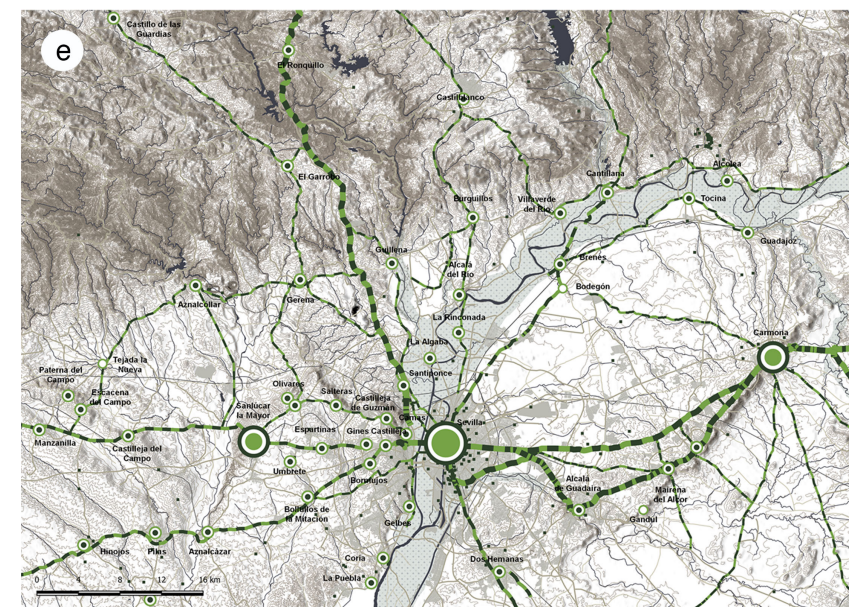
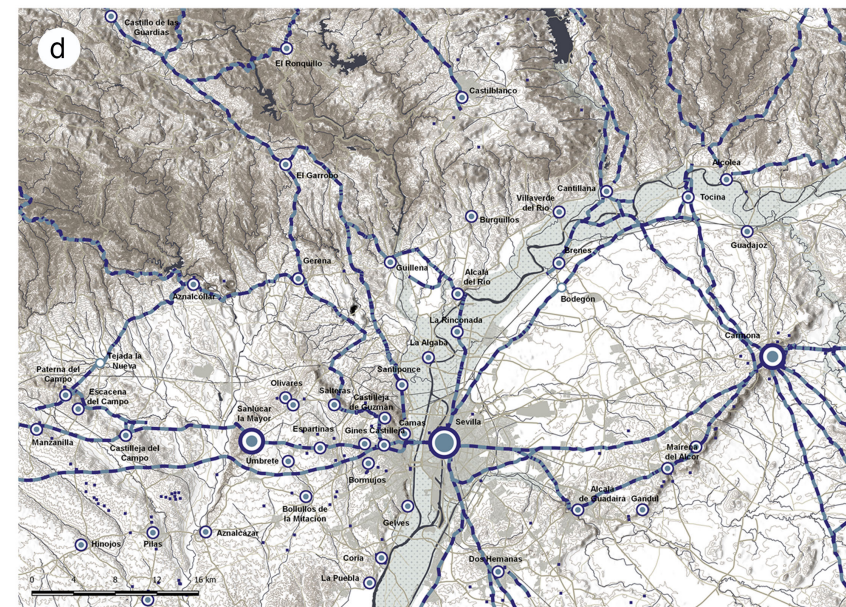
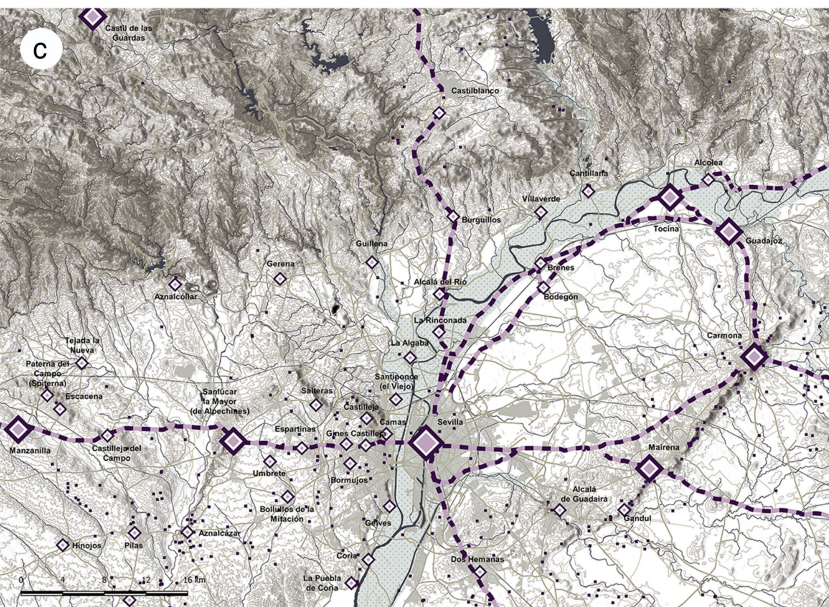
CONNECTING THE ARCHAEOLOGICAL SITES TO THEIR LANDSCAPE
A Three-Step Method to Unveil and Enhance Landscape Values through the Design of Cultural Routes



CONNECTING THE ARCHAEOLOGICAL SITES TO THEIR LANDSCAPE A Three-Step Method to Unveil and Enhance Landscape Values through the Design of Cultural Routes



Hipótesis del esquema de los asentamientos y de las principales directrices de tránsito y comunicaciones en el ámbito del bajo Guadalquivir: (a) en época tartésica-turdetana, (b) en época romana imperial, (c) en la tercera fase de territorialización hacia finales del s. XVI, (d) en los siglos XVII y XVIII y (e) a partir del s. XIX, 2020. Elaboración de la autora sobre el modelo de territorio confeccionado en colaboración con Geomalandar S.L.



A THREE-STEP METHOD FOR DESIGNING CULTURAL ROUTES: STRUCTURE

[1] Synthetical structural descriptions

[1.1] Analysis of the territorialisation processes

[2] Identity interpretations

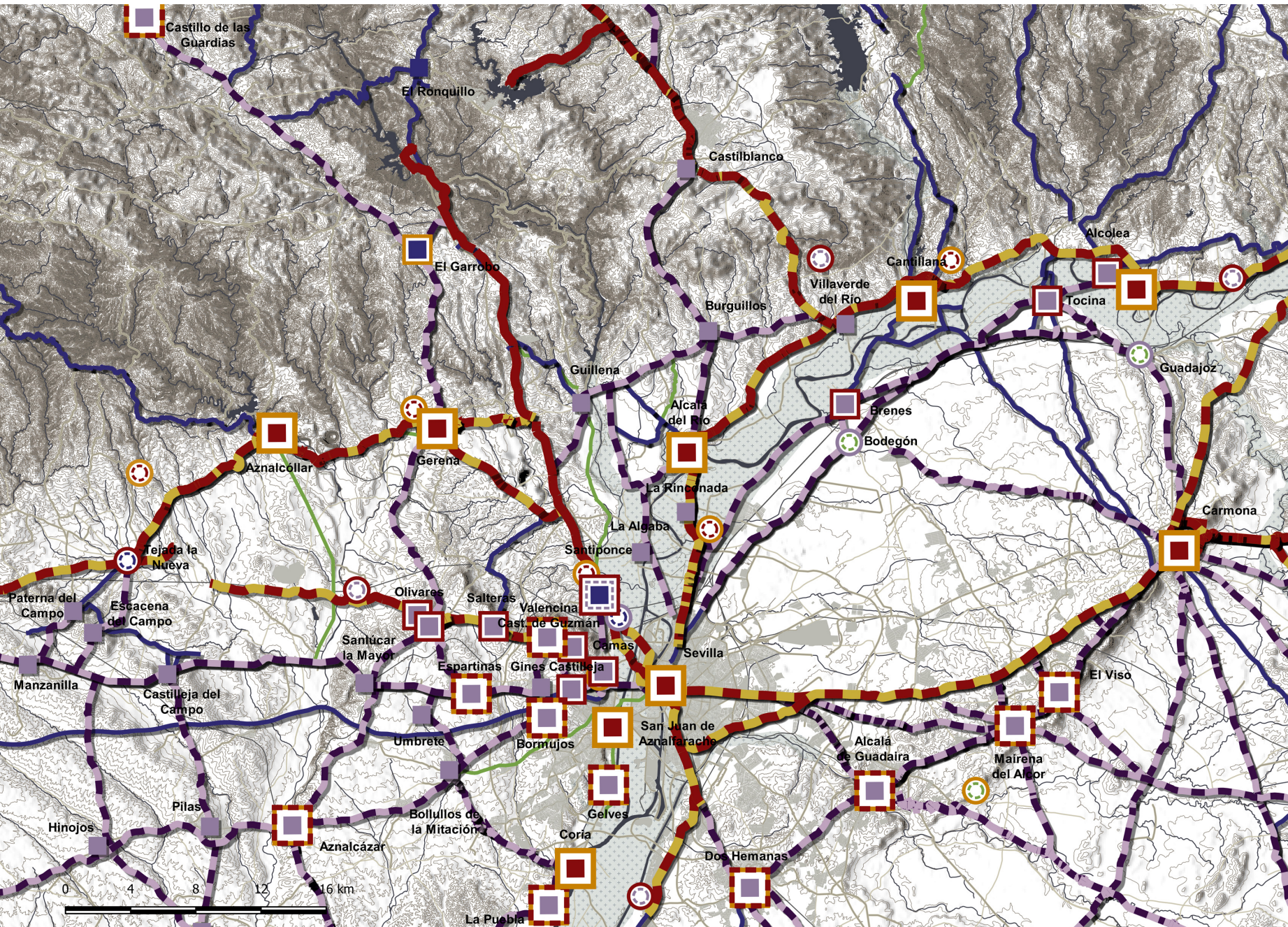
[2.1] Analysis of the sedimentary nature of the historic settlements and means of connection and transport

[2.2] Analysis of the polycentric and network organisation of the settlement systems, urban and infrastructural

[2.3] Delineation of the landscape area/s affected by the design of cultural routes

[2.4] Map of the territorial and landscape heritage

CONNECTING THE ARCHAEOLOGICAL SITES TO THEIR LANDSCAPE
A Three-Step Method to Unveil and Enhance Landscape Values through the Design of Cultural Routes



Legend

Historical synthesis map of the matrices and permanent features of the settlements
 Historical centres

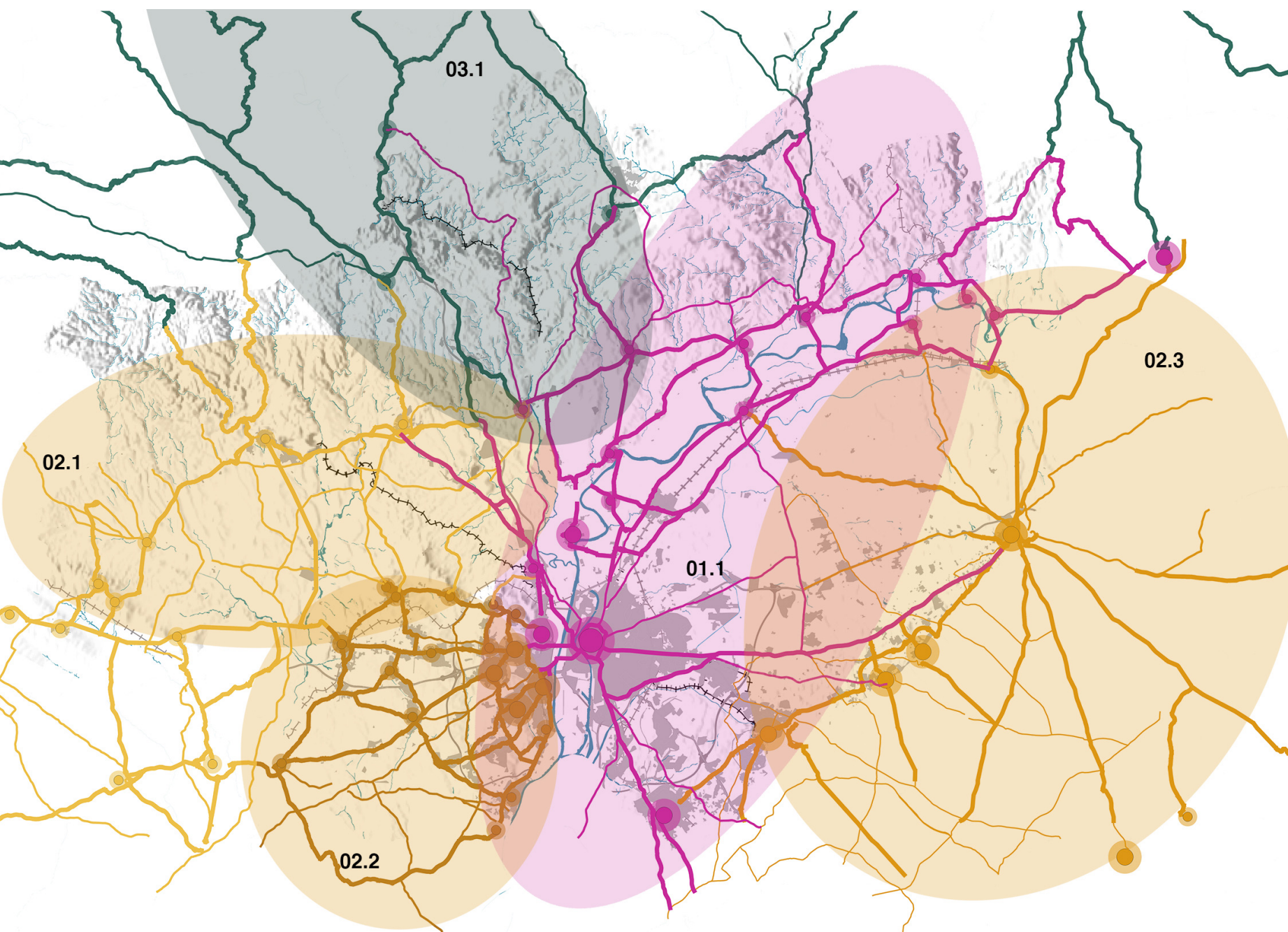
- Pre-Roman centre with continuity in the Roman times
- Centre founded in the Middle Ages on the remains of pre-existing pre-Roman and/or Roman settlements
- Centre founded in the Middle Ages on the remains of pre-existing Roman settlements
- Centre founded in the Modern Age on the remains of a pre-Roman settlement
- Centre founded in the Modern Age on the remains of a Roman settlement abandoned in the Middle Ages
- Centre founded in the Middle Ages
- Centre founded in the Modern Age
- Pre-Roman centre abandoned in the Roman times
- Roman centre abandoned in the Middle Ages
- Roman centre abandoned in the Modern Age
- Centre founded in the Middle Ages abandoned in the Modern Age
- Centre founded in the Middle Ages abandoned in the contemporary era

Transit and communication routes

- Transit and communication routes founded in the pre-Roman or Roman times
- Transit and communication routes founded in the Roman times
- Transit and communication routes founded in the Middle Ages
- Transit and communication routes founded in the Modern Age
- Transit and communication routes founded in the contemporary era

Mapa de síntesis histórica de las matrices y las permanencias de los asentamientos en el territorio del bajo Guadalquivir, 2020. Elaboración de la autora sobre el modelo de territorio confeccionado en colaboración con Geomalandar S.L.

CONNECTING THE ARCHAEOLOGICAL SITES TO THEIR LANDSCAPE
A Three-Step Method to Unveil and Enhance Landscape Values through the Design of Cultural Routes



Mapa de los morfotipos de los asentamientos y de las articulaciones territoriales en el territorio del bajo Guadalquivir, 2020. Elaboración de la autora sobre el modelo de territorio confeccionado en colaboración con Geomalandar S.L.

A Three-Step Method to Unveil and Enhance Landscape Values through the Design of Cultural Routes

Morphotype of the settlements

Structural description (from *Piano di Indirizzo Territoriale della Toscana*)

Territorial articulations

Polycentric morphotype of the urban settlements of the major floodplains

System of settlements typical of the floodplains with a high density of buildings and infrastructures. It is characterised by the urban culture predominance over the rural culture. The strategic median position with regard to the main regional and trans-regional communication routes places the system of settlements in the centre of a network of complex relationships where the local and the regional scale overlap.

Articulations: Seville's alluvial floodplain (01.1).

Polycentric morphotype of the mesh network of settlements of hilly historical landscape

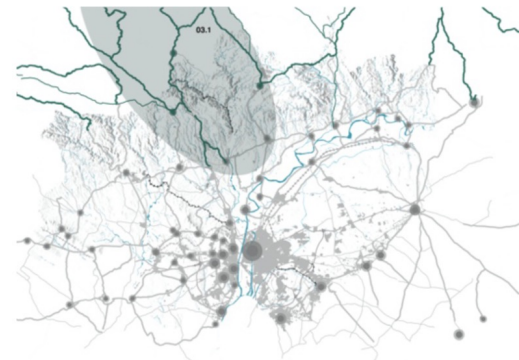
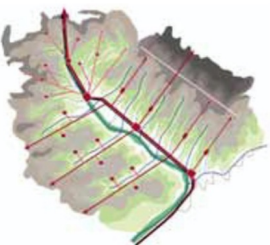
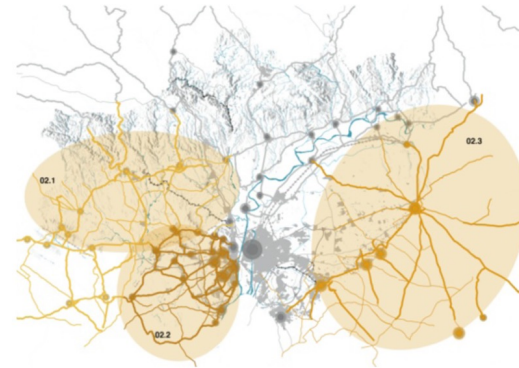
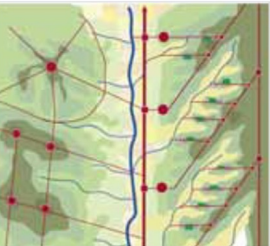
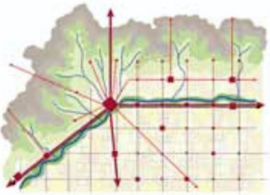
Polycentric system of settlements following a mesh pattern of the hilly historical landscape. It is formed by the hilly settlements, mainly founded in the Middle Ages, which are positioned along the roads on the ridges. These centres are physically and visually interconnected through several roads perpendicular to the main axes.

Articulations: Gerena and Tejada countryside (02.1), El Aljarafe highlands (02.2) and Carmona and Los Alcores cliffs (02.3).

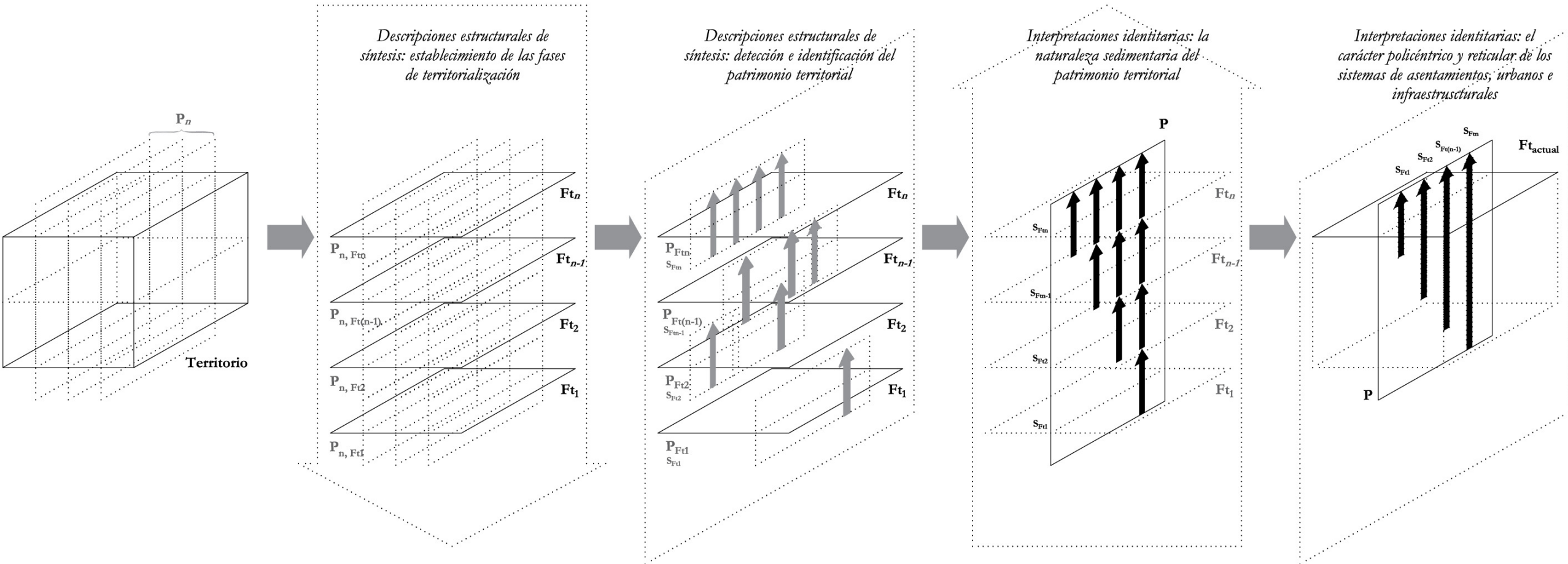
Morphotype of settlements in the form of spine of mountain valleys

System of settlements structured around a river valley and the secondary valleys of their tributaries. The historical road and railway are developed around the main river course. They connect the main centres of the valley bottom. This road represents a spine ascending the hills up to the ridges which interrupts the secondary valleys.

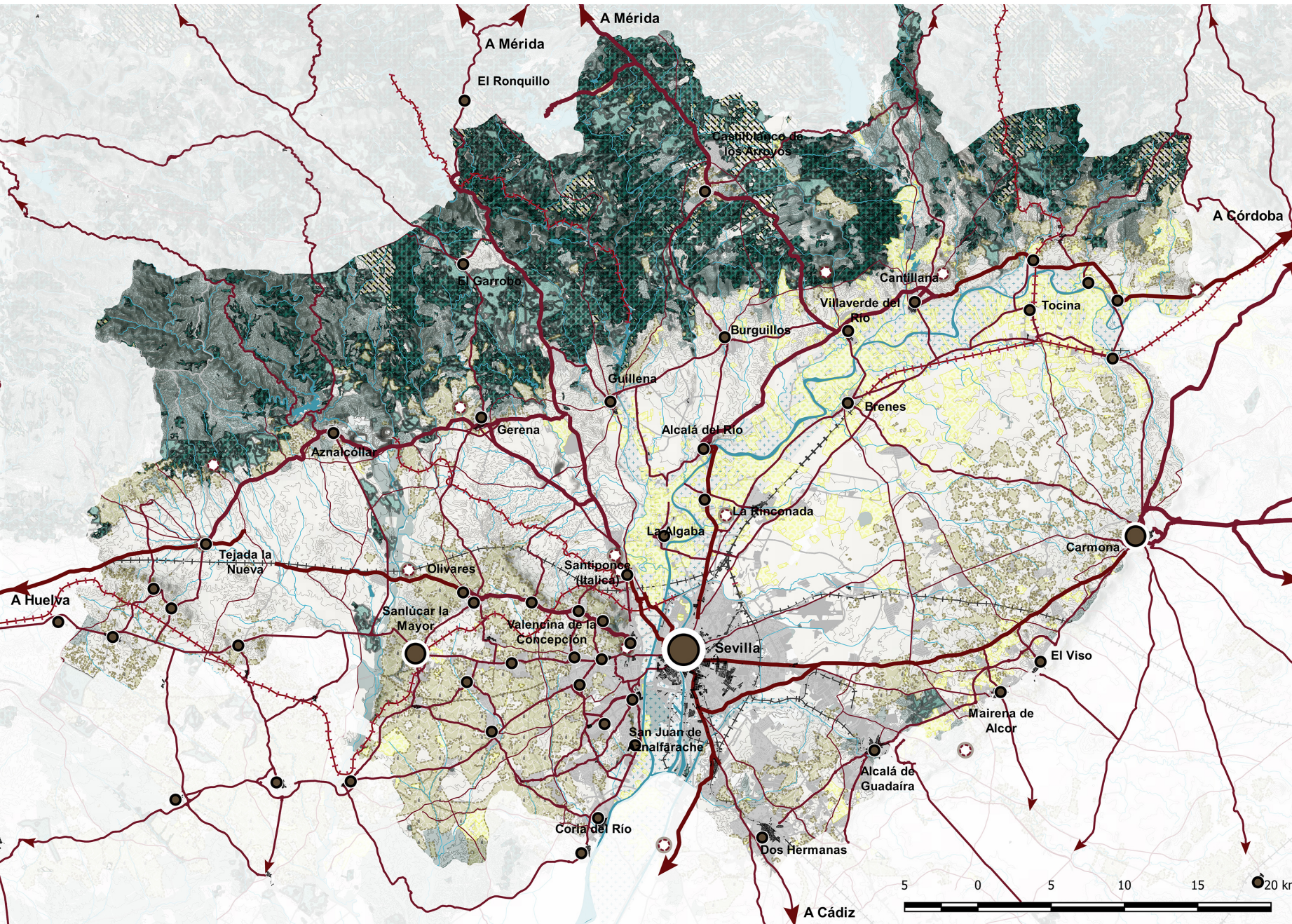
Articulations: Rivera de Huelva valley (03.1).



CONNECTING THE ARCHAEOLOGICAL SITES TO THEIR LANDSCAPE
A Three-Step Method to Unveil and Enhance Landscape Values through the Design of Cultural Routes



CONNECTING THE ARCHAEOLOGICAL SITES TO THEIR LANDSCAPE
A Three-Step Method to Unveil and Enhance Landscape Values through the Design of Cultural Routes



Map of the territorial and landscape heritage

- Contextual elements and structures
- Main road system
 - Urban and periurban road system
 - +— Railway
 - Areas urbanised after the fifties
- Agroforestry matrices
- Forest lands
 - Agricultural lands
- Contextual elements and structures with heritage values
- Historical urban centres
 - Historical medium urban centres
 - Historical small centres and villages
 - Urban centres: historical urban matrix
 - Archaeological sites: ancient settlements
 - Primary historical roads with landscape values
 - Secondary historical roads with landscape values
 - +— Railway with heritage values
 - Hydrogeological system: sheets of water
 - Hydrogeological system: river course
 - Soil formed by calcareous fluvisols
 - Rainfed woody crops: olive groves
 - Irrigated woody crops: citrus trees
 - Grassland with a diffuse canopy (holmoak)
 - Scrub brush forest with holmoak predominating
 - Dense forest with holmoak predominating



Mapa de síntesis del patrimonio territorial y paisajístico del ámbito del bajo Guadalquivir, 2020. Elaboración de la autora sobre el modelo de territorio confeccionado en colaboración con Geomalandar S.L.

CONNECTING THE ARCHAEOLOGICAL SITES TO THEIR LANDSCAPE
A Three-Step Method to Unveil and Enhance Landscape Values through the Design of Cultural Routes



De izquierda a derecha y de arriba a abajo:
a. Beatriz Carmona Lozano, Paisaje Agrario de Gerena. Vista panorámica de Gerena desde el Este en la A477, 2018. Fuente: Instituto Andaluz del Patrimonio Histórico.
b. José María Rodrigo Cámara, Castillo de Tejada la Nueva. Demarcación del Condado, 2009. Fuente: Instituto Andaluz del Patrimonio Histórico.
c. María Luisa Melero Melero, Minas de la Caridad (Aznalcóllar), 1997. Fuente: Instituto Andaluz del Patrimonio Histórico.

A THREE-STEP METHOD FOR DESIGNING CULTURAL ROUTES: STRUCTURE

[1] Synthetical structural descriptions

[1.1] Analysis of the territorialisation processes

[2] Identity interpretations

[2.1] Analysis of the sedimentary nature of the historic settlements and means of connection and transport

[2.2] Analysis of the polycentric and network organisation of the settlement systems, urban and infrastructural

[2.3] Delineation of the landscape area/s affected by the design of cultural routes

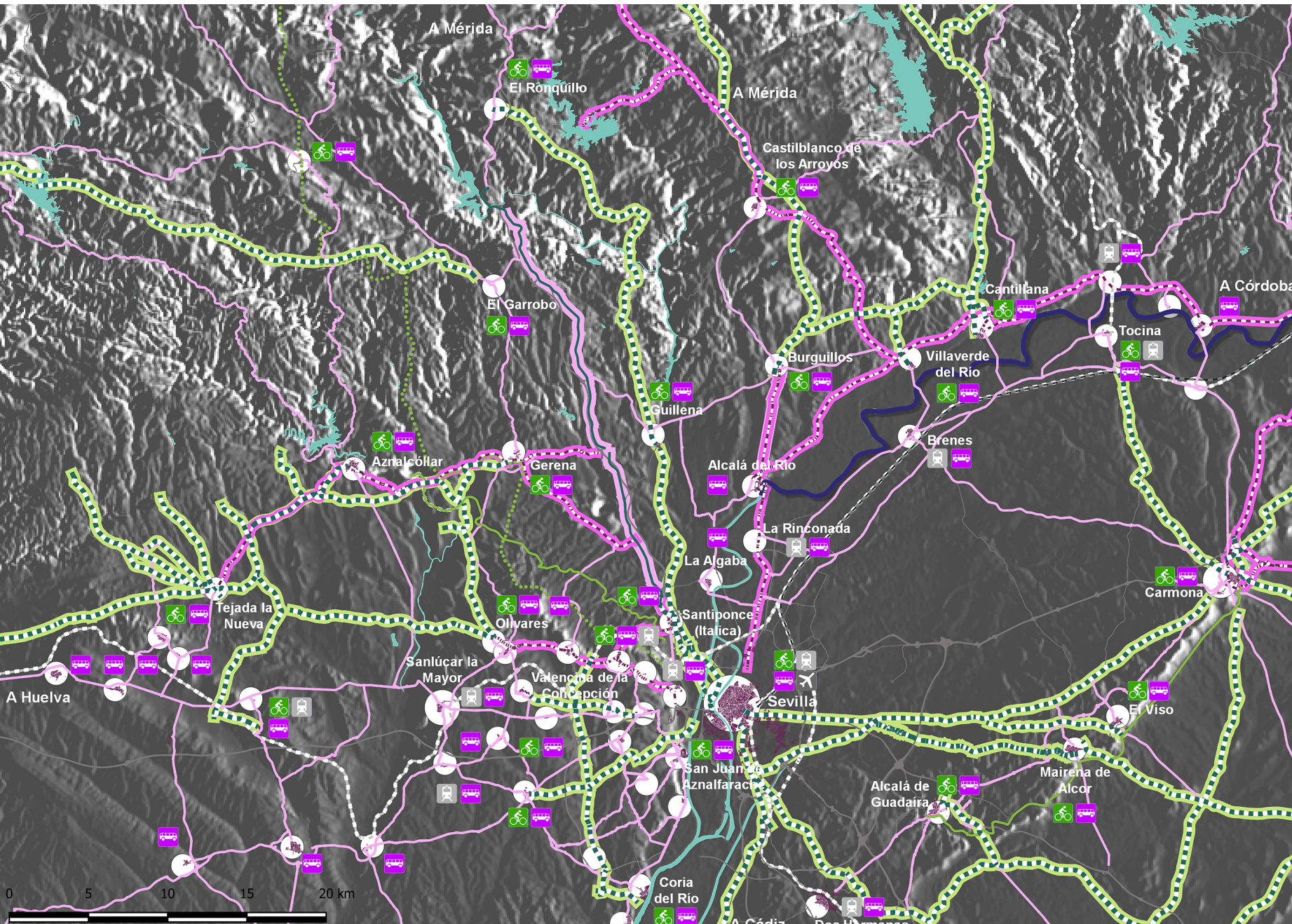
[2.4] Map of the territorial and landscape heritage

[3] Strategic scenario

[3.1] Requalification of the structuring roads and routes of the settlement systems with landscape values

[3.2] Project for the territorial systems to put the archaeological site into sustainable, operational use

CONNECTING THE ARCHAEOLOGICAL SITES TO THEIR LANDSCAPE
A Three-Step Method to Unveil and Enhance Landscape Values through the Design of Cultural Routes



Landscape project for the requalification of the structuring roads and routes of the settlement systems with landscape values

- Road traffic connections of the landscape project for the requalification**
- Structuring roads of the settlement systems (network of cities)
 - Structuring roads of the settlement systems with landscape values
- Pedestrian and cycle roads of the landscape project for the requalification**
- Pedestrian and/or cycle paths on the livestock trails with landscape values
 - Connections with potential use for pedestrians or bicycles on service roads

- Contextual elements**
- Road network**
- Motorways and multi-lane roads
- Railway connections**
- High-speed railway line
 - Double-track railway line (regional trains)
 - Single-track railway line (regional trains)

- Preexisting cycle-tourists and hiking routes**
- Andalusian signposted hiking routes
 - Cycle-tourists and hiking routes of the Andalusian network 'Vias Verdes'

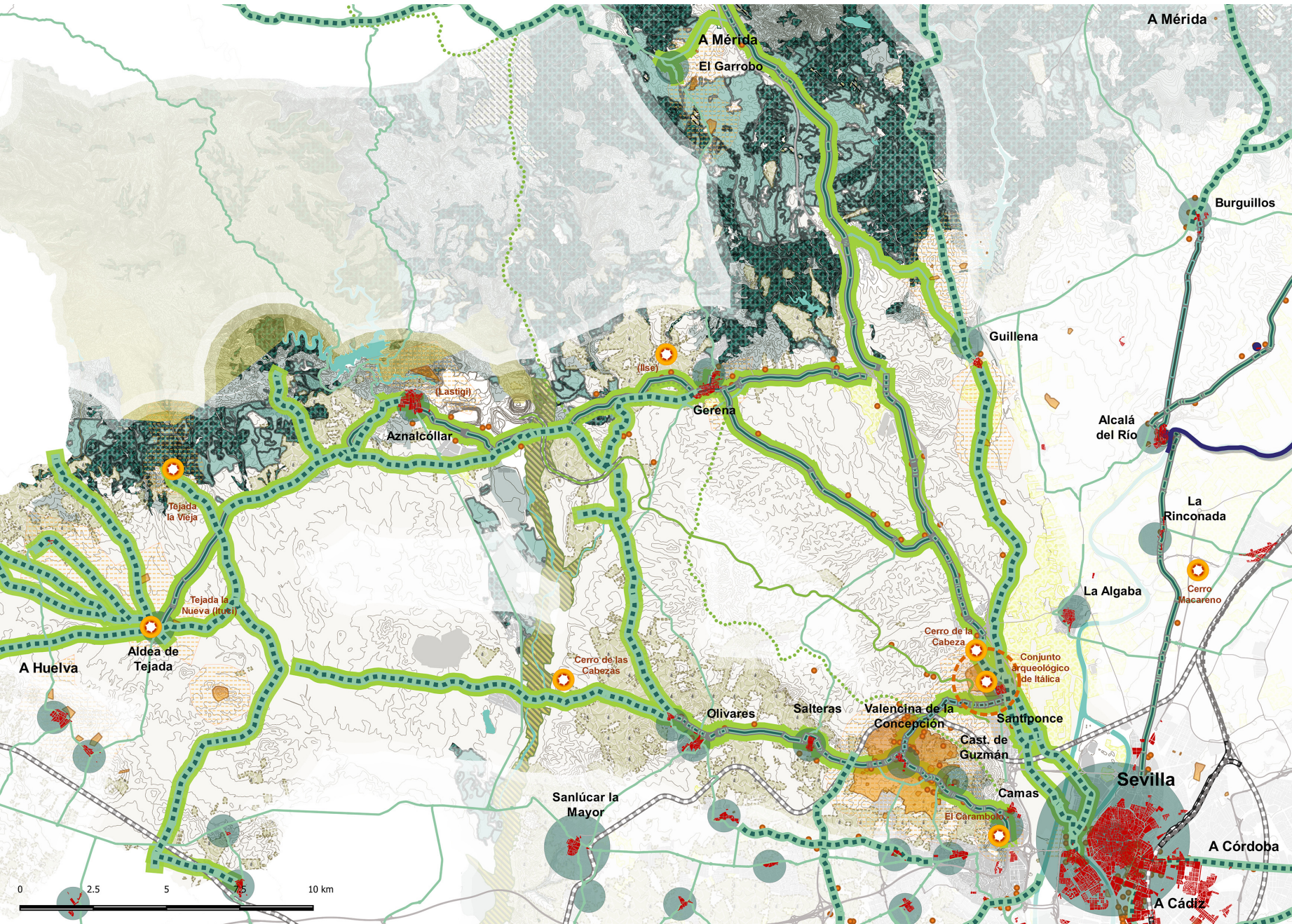
- River connections**
- Hydrogeological system: river course
 - Cultural route 'Elefantes de vapor' (IAPH)

- Transport hub**
- Access to the airport
 - Access to the regional railway line
 - Access to the bus service
 - Access to the cycle-tourists and hiking routes

- Nodes**
- Historical urban centres
 - Historical medium urban centres
 - Historical small centres and villages
 - Urban centres: historical urban matrix

Proyecto de requalificación de las carreteras y directrices estructurantes de los sistemas de los asentamientos de interés paisajístico en el bajo Guadalquivir, 2020. Elaboración de la autora sobre el modelo de territorio confeccionado en colaboración con Geomalandar S.L.

CONNECTING THE ARCHAEOLOGICAL SITES TO THEIR LANDSCAPE
A Three-Step Method to Unveil and Enhance Landscape Values through the Design of Cultural Routes



Landscape project for the territorial systems to put the Itálica archaeological site into sustainable, operational use
System for a soft mobility network: nodes and transit routes

- Nodes: transport hub
 - Network of cultural routes for the contextualisation of Itálica's archaeological site
 - Pedestrian and/or cycle paths on the livestock trails network with landscape values
 - Road traffic and multi-mode connections: roads with landscape values
 - Road traffic connections: network of cities
 - Andalusian signposted hiking routes
 - Cycle-tourist and hiking routes of the Andalusian network 'Vías Verdes'
 - River connections
- Contextual elements: railway lines**
- Double-track railway line
 - Single-track railway line
 - High-speed railway line
- Contextual elements: road network**
- Motorways
 - Multi-lane roads
- Historical settlement systems**
- Urban centres: historical urban matrix
- System of protected areas and sites of natural interest**
- Immovable assets of common interest, national and/or regional**
- Archaeological sites: ancient settlements
 - Immovable assets catalogued by IAPH (polygonal)
 - Immovable assets catalogued by IAPH (buffer = 500 m)
- National and regional reserves and parks**
- Protected landscape 'Corredor Verde del Guadiamar'
 - European network Natura 2000 'Corredor Ecológico del Guadiamar'
- Contextual elements and structures with heritage values**
- Hydrogeological system: river courses
 - Rainfed woody crops: olive groves
 - Irrigated woody crops: citrus trees
 - Grassland with a diffuse canopy (holmoak)
 - Scrub brush forest with holmoak predominating
 - Dense forest with holmoak predominating

Proyecto de los sistemas territoriales para la fruición sostenible del conjunto arqueológico de Itálica, 2020. Elaboración de la autora sobre el modelo de territorio confeccionado en colaboración con Geomalandar S.L.

CONNECTING THE ARCHAEOLOGICAL SITES TO THEIR LANDSCAPE
A Three-Step Method to Unveil and Enhance Landscape Values through the Design of Cultural Routes



MANY
THANKS
MUCHAS
GRACIAS