



Strasbourg, 12 January 1994

PE-S-ZP (94) 47

STEERING COMMITTEE FOR THE CONSERVATION AND MANAGEMENT
OF THE ENVIRONMENT AND NATURAL HABITATS

Group of Specialists - "Protected areas"
(PE-S-ZP)

23 - 25 March 1994

**Ipolytarnoc Nature
Conservation Area**

Application for the European Diploma

presented by:

the Hungarian Government

Directorate of the
Bükk National Park
EGER
Sanc u. 6. sz.
3304 - HUNGARY

JAVASLAT

az Európa Tanács által létrehozott Európai Diploma
elnyerésére
EUROPEAN DIPLOMA

Country: Hungarian Republic /Magyar Köztársaság/

Name of the area: Nature Conservation Area Ipolytarnóc

Body responsible for its management:

Name and address: Directorate of the Bükk National Park

Eger

Sánc u. 6. sz.

3304

Hungary

1. Type of area: Geological natural value: paleontology find
2. Description of geographical location and/or sketch or outline on a map (scale: 1 : 50.000 or thereabouts):
North-Hungary
Nógrád County
Administrative border of Ipolytarnóc
Map on appendix 1.
3. Characteristics and scientific, aesthetic, cultural or recreational value justifying conservation: Rich occurrence of paleontology finds, scientific research. The finds are shown to the visitors. This way we popularize and help the visitors to get acquainted with the geology science.
4. European interest justifying the application: The rich fossil plant finds, the diversified marine micro- and megafossils, the fossil traces of birds and mammals and even of rain droplets preserved in their paleoenvironment represent a unique collection of nature's treasures. This natural geological museum of Ipolytarnóc is to be thanked first of all to the habitat that had resulted from the exceptional paleogeographical setting, to the rhyolite tuff blanket that played a role similar to the case of Pompeii.
Unequaled exhibition which may be developed to representative international basis for education of geology experts and general public.
It is a heritage of mankind and it may be an etalon area for scien-

tific research in neogen lithostratigraphy, biostratigraphy, geochronology, chronostratigraphy, sedimentology, paleobiogeography and faciology. This is the most complex paleontology find in Europe of the early Miocen.

5. Ownership title:

Owner	Territory	
Administrator	ha	m ²
Hungarian Government Council of Ipolytarnóc	5	0117
Hungarian Government Bükk National Park Directorate	159	4860
Hungarian Government Public Road Authority	3	8069
Private	-	1065
Agriculture cooperative, Litke	344	1839
	512	5950

6. Protection scheme: For ensure the protection the Nature Protection Office of Hungary bought the area and fenced in 6 person have the task to guard the territory, and to show in the finds to the visitors. By the ownership we could stop the crossing traffic and disturbance and we do active nature protection.

- Researches already carried out:

Dr.L.Bartkó : Geology of Ipolytarnóc

Dr.L.Hably : Early miocene plant fossils from Ipolytarnóc

Dr.L.Kordos : Footprints in lower Miocene sandstone at Ipolytarnóc

Dr.A.Kubacska: a.s.

Dr.A.Bankovics: Zoológia

Dr.T.Seregélyes: Botanika

F.Kubinyi : Paleontologia

Dr.J.Tuzson : Paleofitológia

8. References to published descriptions: available from the Secretariat

9. Photographs illustrating typical aspects of the area: available from the Secretariat....

- Legislation, regulations in appendix 2.

7. Planning and management plan: enclose the plan or a summary, in one of the two official languages of the Council of Europe, of the action taken, with particular reference to reception facilities and the provision of information for the public.

The development of the area started by the Hungarian Nature Protection Office. Since then the office built the modern system of protection and exhibition at the most important finds.

Over the find of 22 million years old footprints a large protection- and exhibition-hall was built, where the visitors can watch the incomparable finds. At other sites for protection and exhibition of the petrified giant pine tree-trunk the office built a smaller room. We built an exhibition study-path with several information boards at geology explorations.

We have accommodation in the research-house for 10 scientist during their research program.

According to the development plan there must continue the researches for getting more complex acknowledgement of the mediterranean life here by its' palaeontology find. After the new exploration new protector buildings are necessary to built over.

Buying other 180 ha of the protected area is in our plan.

In the surrounding of Ipolytarnóc there are finds of different geohistorical periods which have scientific importance.

We plan to protect them in a 4000 ha area.

The Hungarian Television informed in several reports the public, our office made a video-tape to show in the area.

We published a brochure also. We plan to publish brochures on more languages but we have not the money for it.

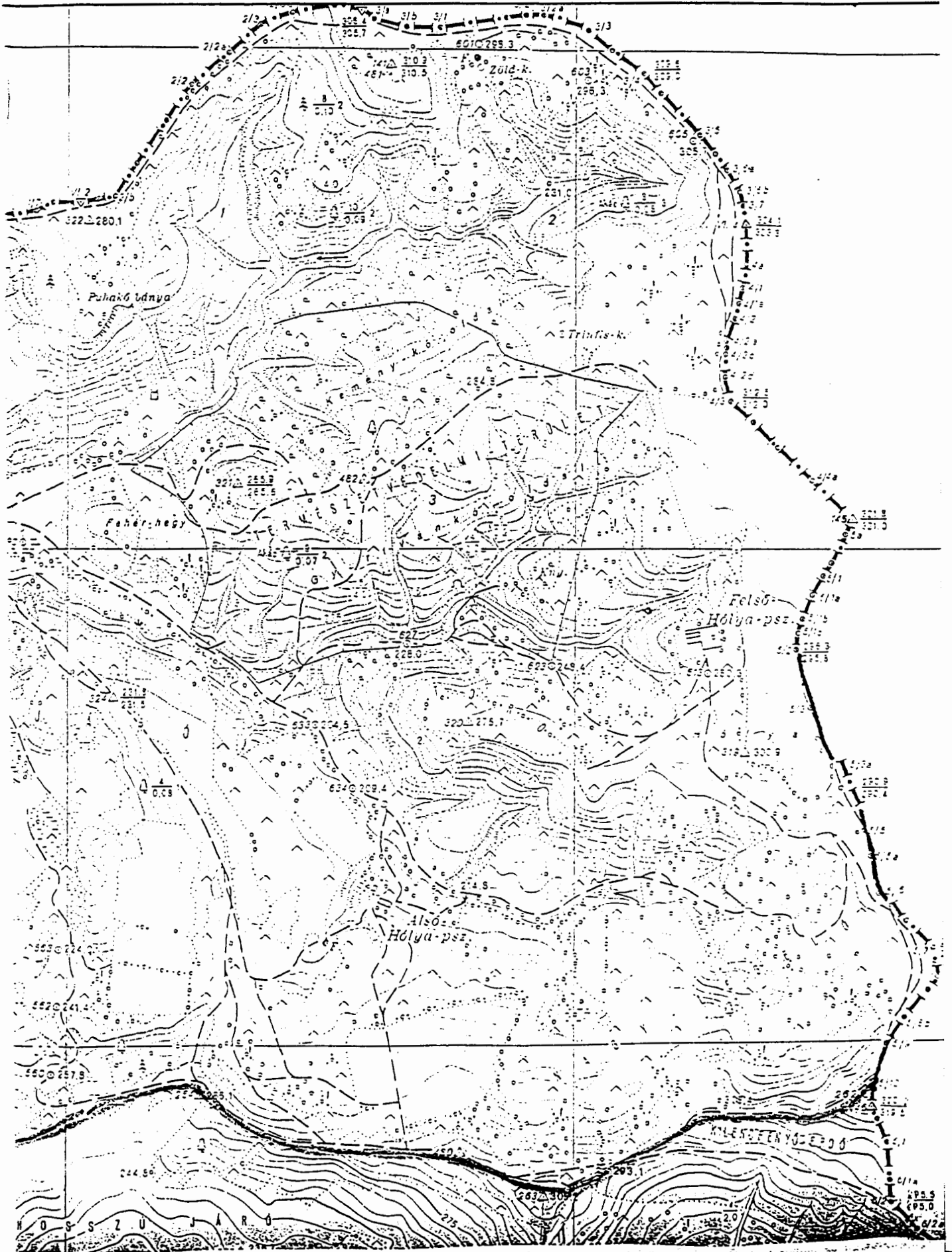
Continuation of geology study-path we built the wildlife study-path, too for giving the visitors opportunity to make the comparison.

We built a visitors centre with buffet in it, the electricity water- and telecommunication system and a 2 km long massive surface road to the village with parking.

NATURE CONSERVATION AREA IPOLYTARNÓC 1:10000

border of nature conservation area

border of the country



APPENDIX II

R e s o l u t i o n

No. 3/1977. OTvH
of the President of National Agency for Nature Conservation
on the expansion of
Ipolytarnóc Fossils Nature Conservation Zone

In my power based on Law-decree No.18 of 1961 on nature conservation and Government Decree No. 12/1971.(IV.1.)Korm. on its enforcement I made the following

R e s o l u t i o n

1. Hereby I declare to be a nature conservation zone - as value of national significance - and annex it to the protected zone of nature conservation Register No. 54/TT/54 the land plots of topographical lot numbers 032/1, 032/1 with a total area of 105,7 hectares lying in the fields of Ipolytarnóc. Land register data are contained in Annex No.1.

2. The expanded area of the fossil site is 156,8 ha.

3. The functions of the expanded nature conservation zone are as follows:

a) to ensure more efficiently the further existence and protection of the from geological-paleontological aspects highly important and internationally considerable values;

b) to provide undisturbed conditions for scientific research;

c) through presentation of geological-paleontological values for educational purposes in order to contribute to the improvement of scientific culture.

4. Basic rules of protection:

The area declared protected forms an integral unit with the area declared protected by Resolution No.513/1954 of National Nature Conservation Council, therefore to its protection and nature conservation management the following rules should be applied uniformly together with the already protected area.

a) On the area of the fossil site with the exception of facilities serving scientific research, education and presentation no buildings or other installations should be established or operated, respectively, which in any way would imperil or disturb the existence or proper functioning of the protected area;

b) no mining activities are allowed. Earth moving operations could be executed only with the approval of OTvH;

c) it is prohibited to collect and remove any rocks, petrifications or fossils, respectively;

d) woods lying on the area of fossil site are to be categorised for nature conservation purpose in the forestry operational plan.

No grubbing is allowed.

The stocks of Robinia should be replaced gradually by species appropriate to the habitat.

e) Research and further exploration of the area is allowed only in agreement with the Central Geological Bureau and Hungarian National Museum and with the permission of OTvH.

5. Nature conservation management of the fossil site will be handled by the National Agency for Nature Conservation. Costs of upkeep and nature conservation management are to be envisaged and allocated in the budget of OTvH.

O M I S S I O N

Zoltán Rakonczay
president,
National Agency for Nature Conservation.