

Contribution in the field of citizen participation in decision making

Philippe JAQUEMYNS, Echevin for public space management and relations
with the European Communities

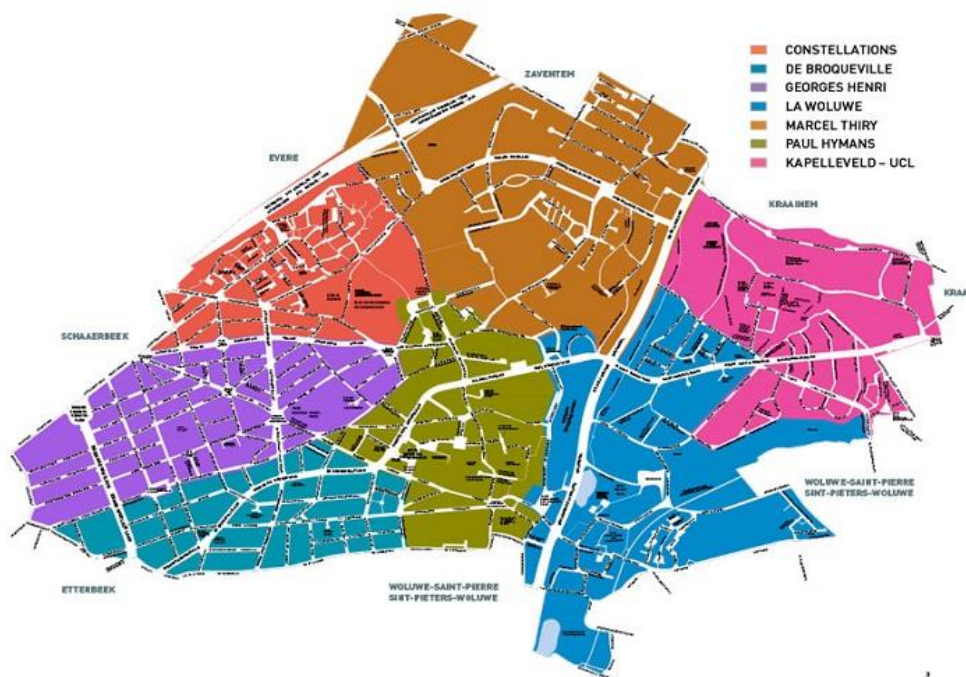
International conference on civil participation in decision-making
Conseil de l'Europe

Plan

- Introduction
- Evolution of citizen participation:
 - Neighbourhood Committees
 - Public space remodelling projects: participatory democracy laboratories
 - Participation municipal Codex
 - Neighbourhood meetings
 - Citizens' micro-projects
- Participatory democracy as federating means on general dossiers
- Participatory budgeting
- The Council of Associative Life
- The Intercultural Forum

Introduction

Identity map of the Woluwe-Saint-Lambert community



- 57.754 inhabitants (30/09/2018)
- Surface : 7,22 km²
- Population density : 8000 inhab/km²

Evolution of citizen participation

- Neighbourhood committees:
 - Presence of committees composed of citizens in many community neighbourhoods since the mid-70s
 - Objective of these committees: thematic reflection: urbanism, mobility, information and debate evenings on subjects related to the neighbourhood.
 - Convey to the municipal authority the result of such reflections
 - Creation of an umbrella structure of committees :
 - Wolu-Inter-Quartiers : ASBL which is not subordinated to the municipality
 - Evolution of fields of interest of neighbourhood committees: from neighbourhood themes to municipal, inter-municipal, regional and federal themes

Evolution of citizen participation

- Public space remodelling projects:
 - ➔ Citizen participation laboratory since the beginning of the 2000s:
 - Citizen involvement : criticism, observations and proposals of alternatives to the project presented
 - Take into account neighbours' opinions in the decision-making process
 - Objective : largest-possible scale adhesion of the inhabitants to the project proposed
- Inhabitants' meetings are initiated by the municipality (80 meetings/year)



Evolution of citizen participation

- Citizen participation Codex (since 2009):
 - Compulsory information of inhabitants on dossiers of municipal interest
 - Possibility for inhabitants to give an opinion
 - Consultation of the dossier
 - Possibility to organise a meeting for information and presentation of the project
- Neighbourhood meetings (7/year):
 - Debating meetings with inhabitants of the neighbourhood concerned on all subjects related to the neighbourhood and municipal life

Evolution of citizen participation

- Implementation of micro-projects proposed by the neighbourhood committees or associations

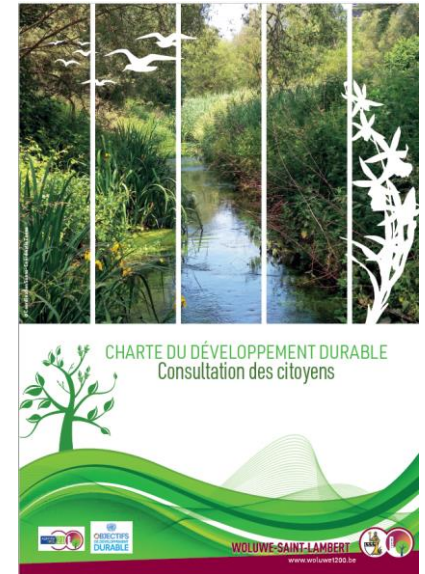




Commune de
WOLUWE-SAINT-LAMBERT

Evolution of citizen participation

- Citizen participation as a federating means on general dossiers :
 - ➔ Achievable because of the confidence created between the municipality and the neighbourhood committees
- The federating Charter of neighbourhood committees of Woluwe-Saint-Lambert concerning airflights over Brussels
- The municipal Charter on sustainable development




WOLUWE-SAINT-LAMBERT



www.woluwe1200.be

PARTICIPATORY BUDGETING

- 
- Citizen projects of spatial planning or perennial projects of collective interest concerning the public space or municipal property
 - **Maximum** 50.000 EUR per project
 - **Available budgetary enveloppe: 200.000 EUR**

WOLUWE-SAINT-LAMBERT | SINT-LAMBRECHTS-WOLUWE

www.woluwe1200.be



PARTICIPATORY BUDGETING

- **By whom:** inhabitants (minimum 16 y.o.), inhabitants' groupings, neighbourhood committees, associations of merchants or legal persons (headquartered on the municipal territory)
- Dossiers to **introduce** online
- **Selection of dossiers by the Council of associative life**
- **Vote des habitants** via une plateforme en ligne

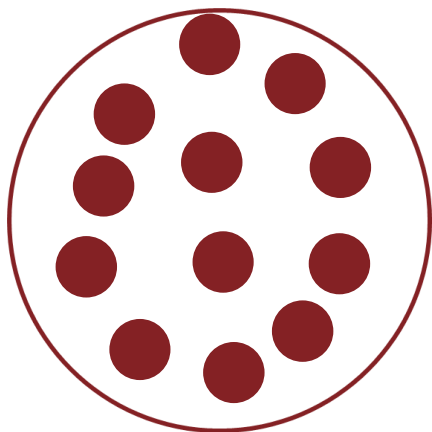


The Council of Associative Life

- Very developed associative sector:
 - 307 associations registered on the municipal territory
- Desire of municipal authorities to have a structured interlocutor for the associations:
 - Creation by the municipal Council of the Council of Associative Life
 - → place of expression, preparation of projects of associations' participation, groupings, clubs, organisation of youth movements
 - → gives an opinion to the College:
 - On any project of support to local life
 - On participatory budgeting

The Council of Associative Life

- Composition of the Council of Associative Life:
 - Associations with or without legal personality which presented their candidature
 - Headquartered in Woluwe-Saint-Lambert
 - Linked to local life
 - With the exception of political parties



The Intercultural Forum

- Creation of a body which is open to inhabitants who do not have Belgian nationality:
 - Forum of discussion
 - Competence to give opinions on issues related to the reception of populations in foreign languages
 - Activities to promote interculturality



Questions?

