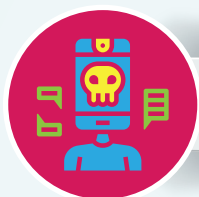




# Intermediate guide to analysing a case of hate speech

Targets a potentially vulnerable group?  
 Targeted group are victims of discrimination/violence?  
 Negative stereotypes of targeted group?  
 Speech connected to negative stereotypes?  
 Political representation of targeted group?

## CONTEXT



## SPEAKER

Status of the speaker?  
 Capacity in which speech was made?  
 Influence of speaker on targeted group?

Past actions of the speaker?  
 Reaction of the speaker?  
 Intended audience?

## ASSUMED INTENT

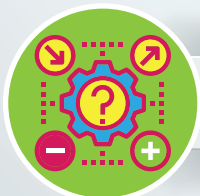


## CONTENT AND FORM

How provocative/aggressive is the speech?  
 Form of the speech?  
 How direct was the hate?  
 Legal status of the hate speech?

Public or private speech?  
 How was it disseminated?  
 How often was it disseminated?

## REACH OF THE SPEECH



## LIKELIHOOD OF ACTION

Effects produced?

[www.coe.int/human-rights-speech/analyse](http://www.coe.int/human-rights-speech/analyse)



Co-funded  
by the European Union



Co-funded and implemented  
by the Council of Europe