

# JVA Bielefeld-Senne – Europe's largest open prison institute

6 June 2023



# Key concepts – prison landscape in NRW



- Closed men's prison
- Ⓢ Therapeutic correctional facility
- Open men's correctional institute
- ⊙ Closed men's correctional institute with preventative detention
- Closed youth correctional institute for men
- Open youth correctional institute for men
- Ⓜ Closed and open correctional institute for men
- Closed and open youth correctional facility for men
- Closed correctional facility for men and women
- Open men's and women's prison
- Closed men's and women's correctional institute with department for open women's correctional institute
- Ⓜ Closed and open women's correctional institute with preventative detention
- ◆ Juvenile detention centre for boys
- ◆ Juvenile detention centre for girls
- Ⓜ Correctional hospital with open mother-child facility
- Ⓢ Correctional school

- 18,959 prison places
- 14,683 closed correctional institute
- 4,276 open correctional institute
- 14 institutes and departments of the open imprisonment system



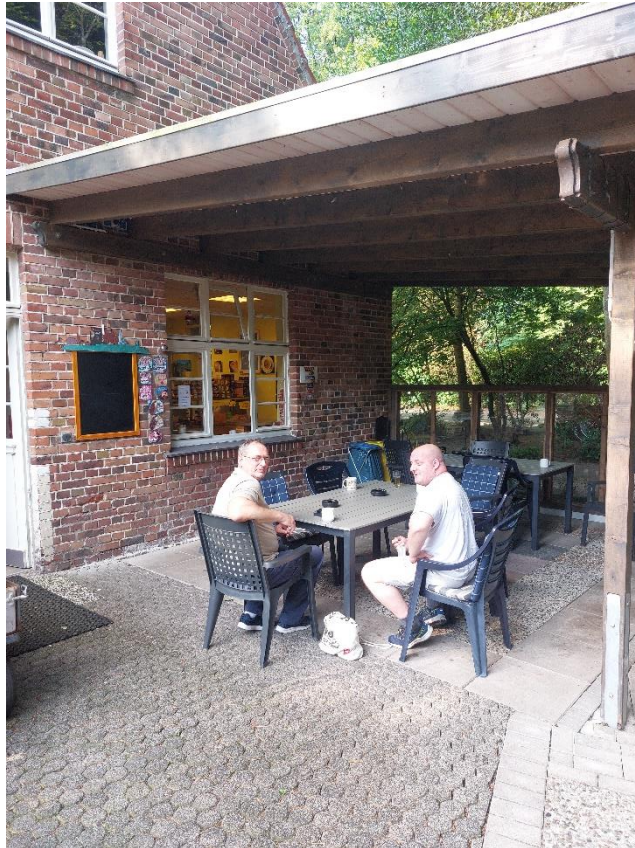
## Key concepts - closed and open correctional institutes

- ➔ Section 12, Paragraph 1, Sentence 2 of the North Rhine-Westphalia Execution of Sentences Act (StVollzG NRW)
- Special requirements of the open imprisonment system
  - Prepared to change and work without restriction, prepared to integrate in the community, ability to lead properly with less supervision than in a closed correctional institute, the intention to consciously want to improve oneself (example: Referral by Hagen Prison, recommendation based on the Treatment Program for Sex Offenders (TPSO), participation is denied in the local institute)
- No risk of escape or abuse

# Basics – Differences between the open and closed imprisonment systems



# Basics – Differences between the open and closed imprisonment systems





# Features of the open imprisonment system

- Sentences are executed in alignment with the life situation outside of the institute
- Promotes independence and individual accountability
- Preserves one's job or opens up new fields of employment
- No/reduced provisions for preventing escape, Section 6, Paragraph 4 StVollzG NRW
- No continual and direct supervision
- Mobile phones in the open imprisonment system are permitted for prisoners and staff under strict conditions
- Purchase outside of the institute, Section 17, Paragraph 1, Sentence 3 StVollzG NRW

# Key concepts – ways into the open imprisonment system

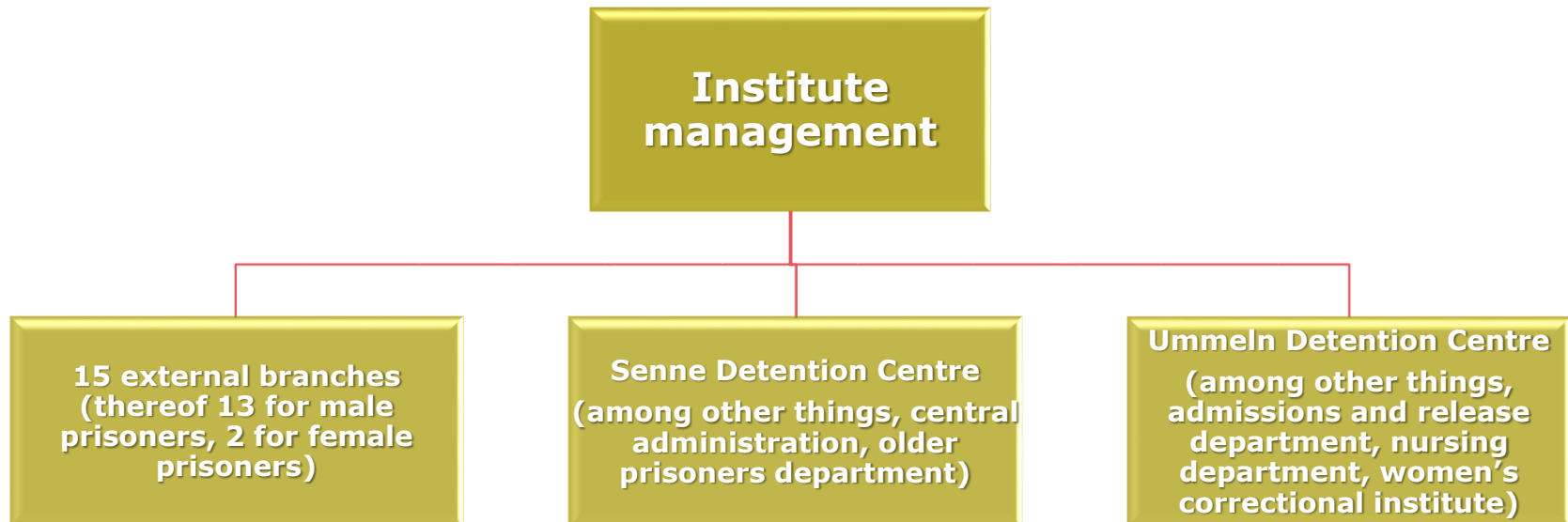


3 ways into the open imprisonment system:

- Referral by the Hagen Prison (recommendations)
- Progression (change of closed – open imprisonment system)
- Primary jurisdiction - All individuals convicted of a custodial sentence who are free at the time of the final judgement are allocated to the open imprisonment system (except for sex offenders in Hagen).

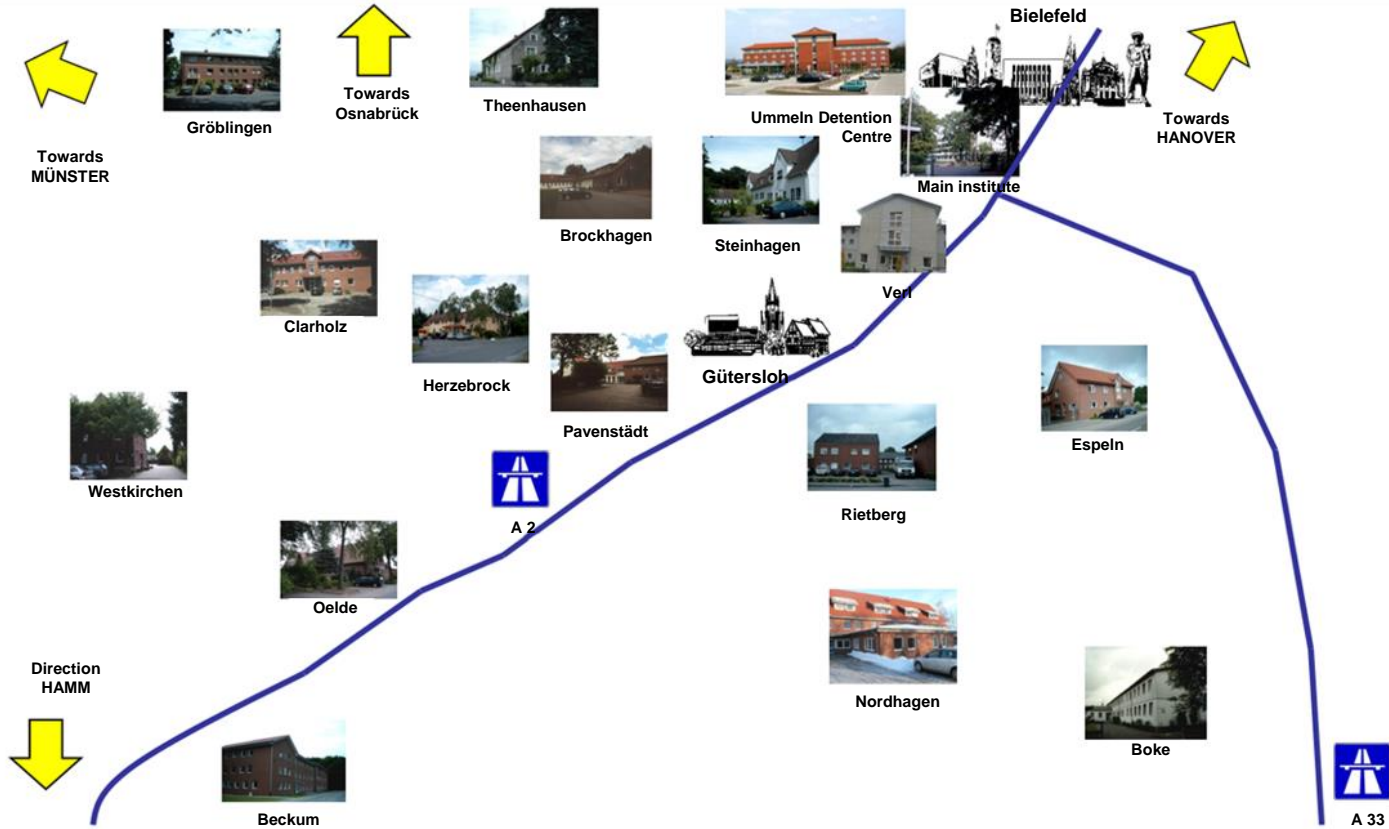


# Organisation of the institute



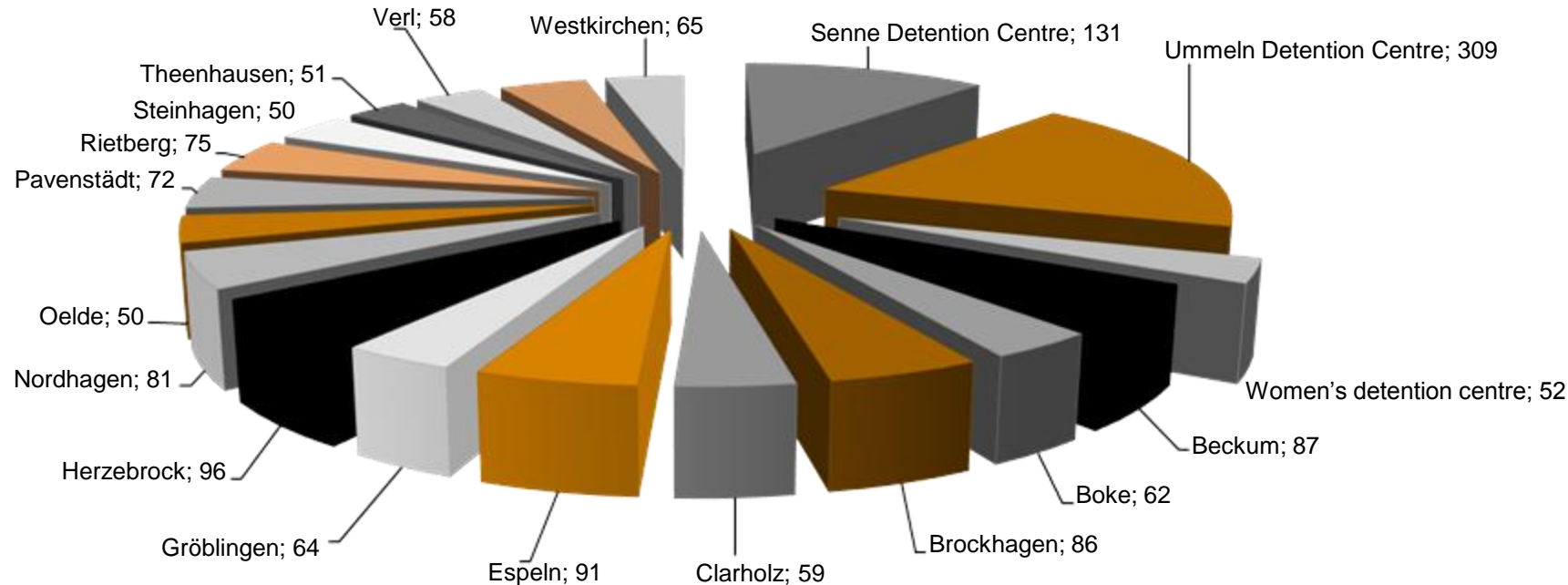


# Bielefeld-Senne Prison





## Occupancy capacity / distribution of detention places

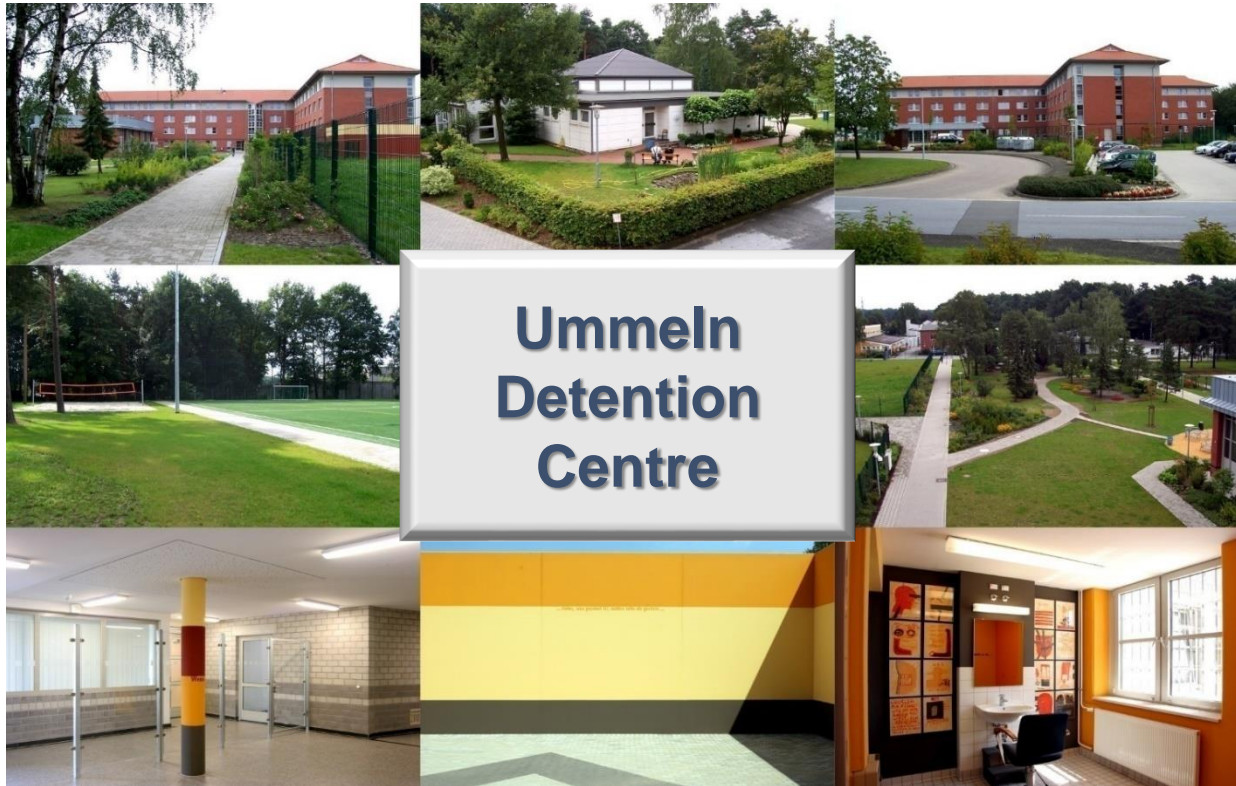


**Fixed occupancy capacity:**  
**(thereof 152 places for female prisoners)**

**1,569**



# Admissions and release department Ummeln Detention Centre



# Ummeln Detention Centre



Fixed occupancy capacity:

Men's section: 309

Women's detention centre: 52

Focuses:

- Admissions and release department
- Substitution department
- "Comeback" treatment department
- Prisoners with integration requirement



# Main institute with administration and Senne detention centre



Fixed occupancy capacity: 131 prisoners

Focuses:

- Inmates for the institute's own operations
- Older prisoners





Fixed occupancy capacity: 58 prisoners  
Special feature: Young offender project  
(JTP/YOP)





Fixed occupancy capacity: 96 prisoners

Special feature: Treatment program for gambling addiction



## Pavenstädt branch



Fixed occupancy capacity: 72 prisoners



Special feature:

Specialised treatment programs for violent and sex offenders



# Espeln branch



Fixed occupancy capacity: 91 prisoners  
Special feature: Project for perpetrators of  
domestic violence - GIB (Violence in Relationships)





## Employment



The employable prisoners are mainly employed in private companies for work.

The inmates must

- integrate themselves in the work process.
- are thus able to better compete in the job market and have the chance to qualify for the primary labour market.



## Employment / summary

### Special features of the open imprisonment system:

- Employment rate of 95%
- Possibility of regular employment / continued employment
- Approximately 80% of prisoners work daily in companies located in the vicinity of the branches and prison buildings
- Collaboration with around 730 companies in the OWL area

### Conclusion:

Every prisoner should be released through the open imprisonment system which offers the best way for prisoners to gradually and realistically reintegrate into society.

**The prisoners of today are our neighbours of tomorrow!**



# Questions?

# Go right ahead!