

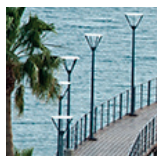


Socrates Mas

© Socrates Massouras

Multifunctional Seaside Park in Limassol

Limassol Municipality



In 1970, the government and the municipal authorities of Limassol launched a reclamation project involving some coastal areas of the city of Limassol, by expanding the land into the sea, in order to cope with erosion, to protect buildings along the beach, and to create a large seaside park. The existing seafront, which was a kilometre long and 65 metres wide, had to be modified to integrate it into the new modern face of the downtown, following a unified design. The reconstruction required land use planning including notably: the plantation of local species resistant to high temperatures; the development of a system to use recycled water from the sewage system for irrigation; the construction of diverse infrastructures (a bike lane along the main road, a small amphitheatre, loungers, walkways, playgrounds and seating areas, skateboard area, pontoons and pedestrian decks); as well as the installation of a lighting system. This development took into account the existing green spaces, playgrounds, fountains and sculptures.

The Committee of Ministers acknowledged the great value of the achievement presented for the 6th Session of the Landscape Award of the Council of Europe's European Landscape Convention 2018-2019, and the importance to make it well-known as a source of inspiration.

In accordance with Resolution CM/Res (2017)18 of the Committee of Ministers, the project is thus part of the Landscape Award Alliance of the Council of Europe.