

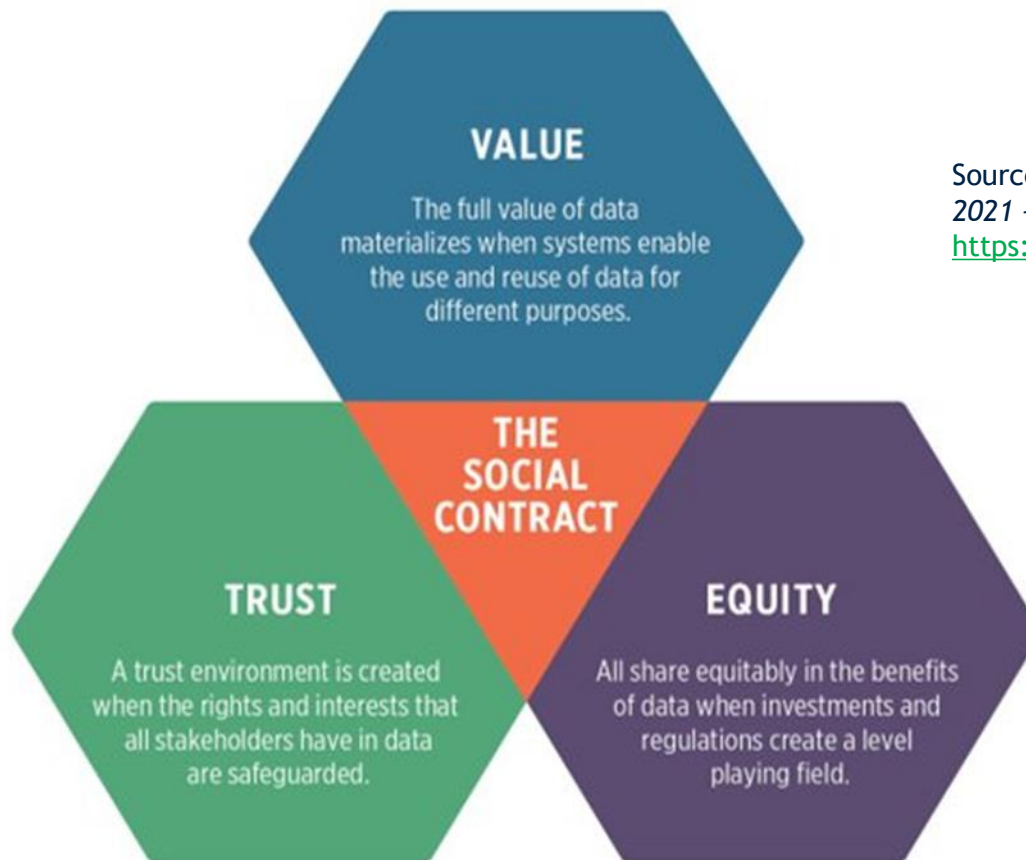
AMERICAS REGIONAL FORUM ON INTERNATIONAL COOPERATION AGAINST CYBERCRIME AND ELECTRONIC EVIDENCE

Data Protection as an Enabler to International Cooperation on Cybercrime

San Jose
9 November 2022

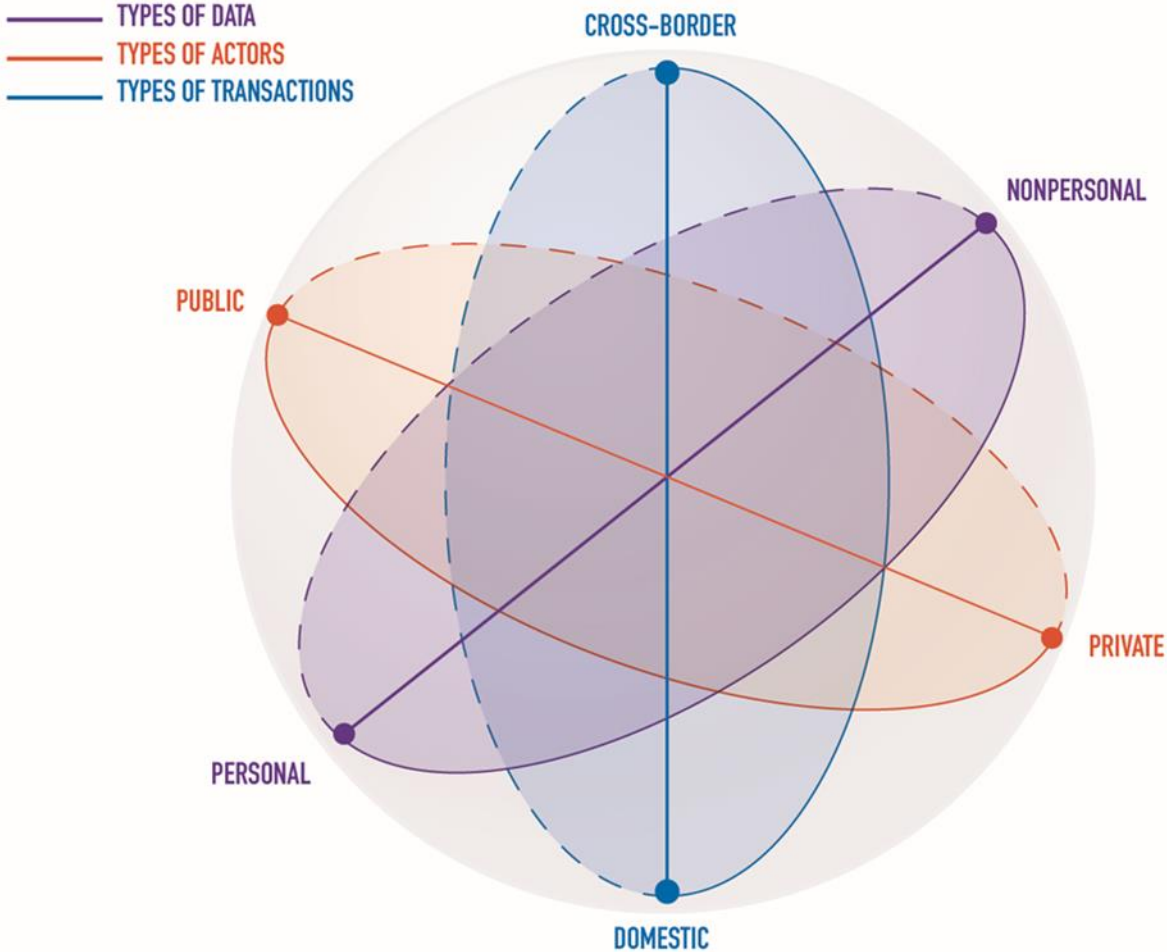


Legal enablers and safeguards are key elements of the evolving social contract on data based on trust



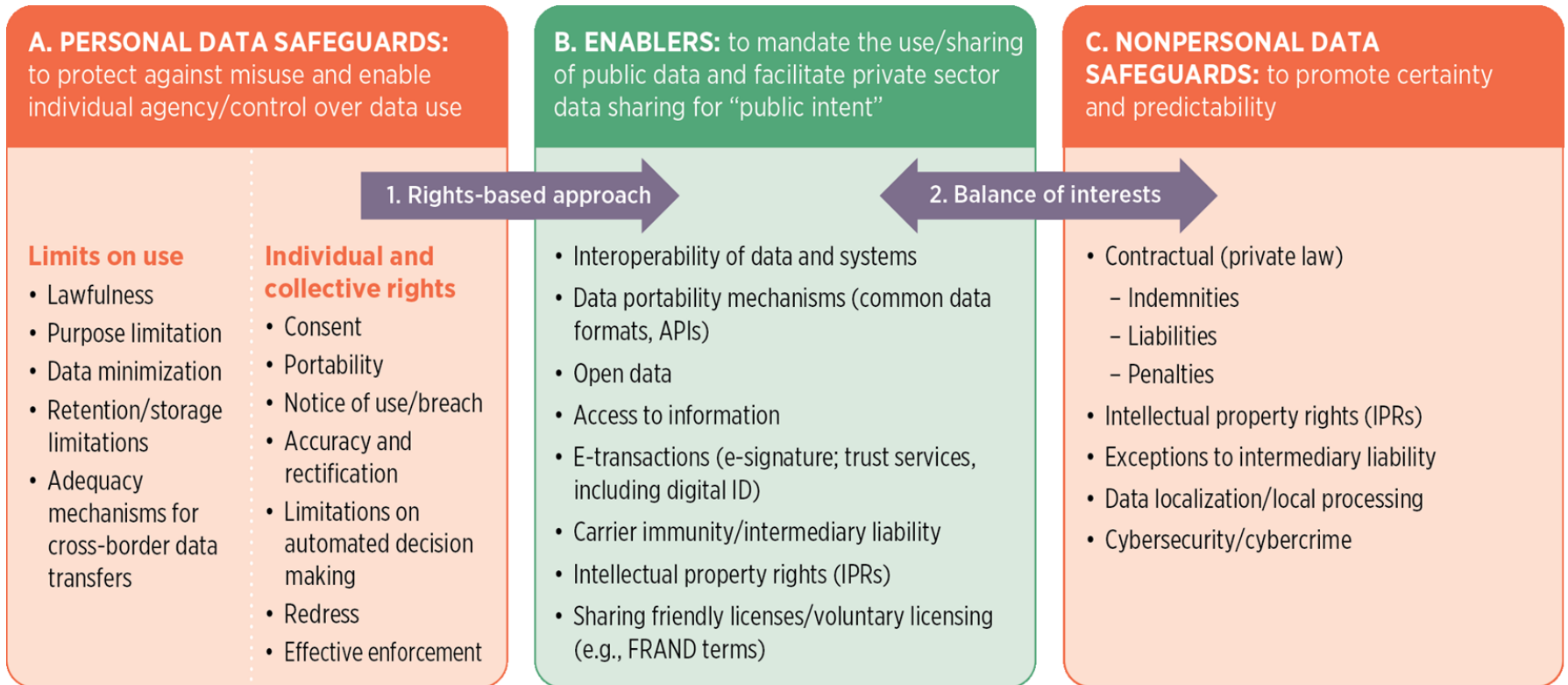
Source: World Bank, *World Development Report 2021 - Data for Better lives*
<https://wdr2021.worldbank.org/>

A multidimensional legal framework for trusted data transactions



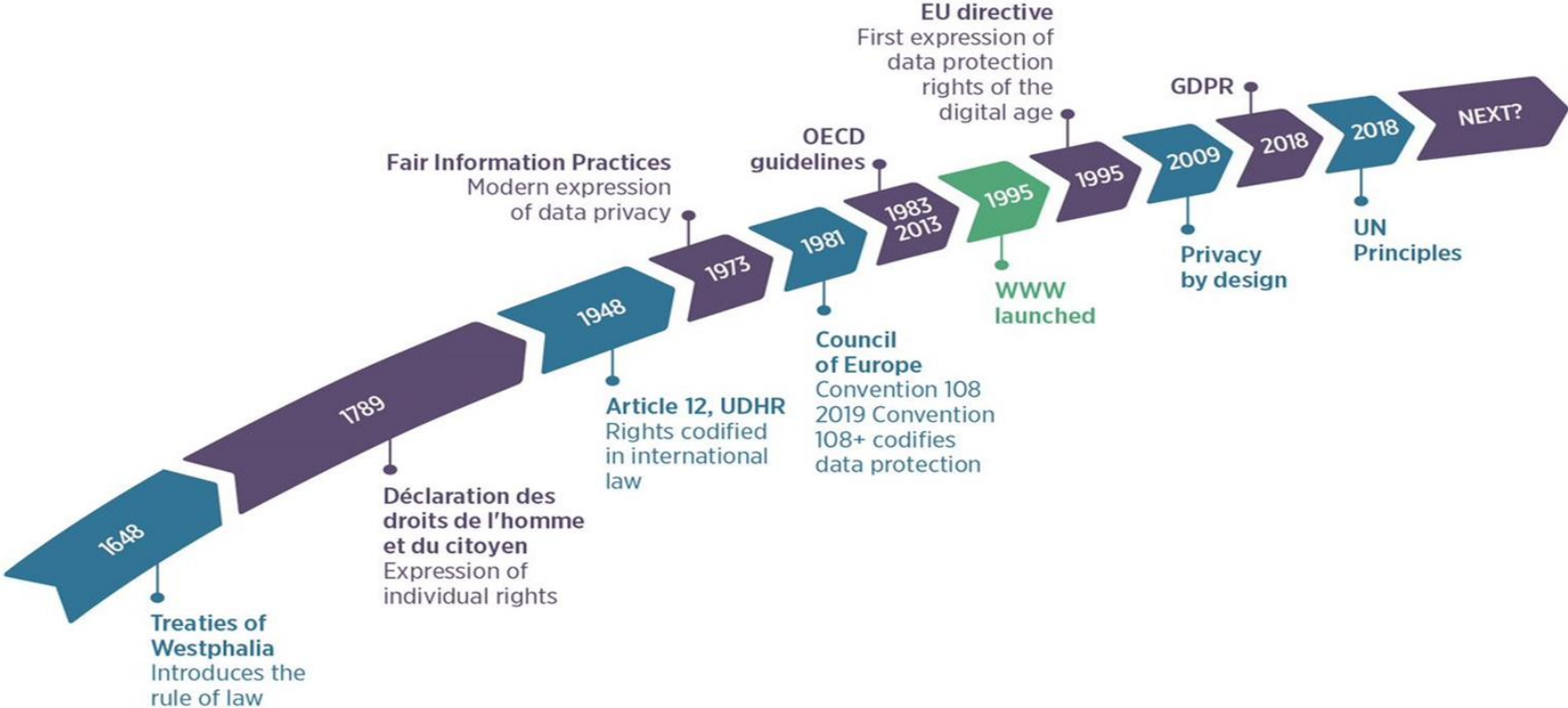
Source: WDR 2021 team

A differentiated approach to enablers and safeguards is needed to build trust



Source: WDR

An Evolving Social Contract: the Arc of Data Protection



Source: WDR 2021 team.

Budapest Convention

Article 15 Conditions & Safeguards

Second Additional Protocol

Combating Cybercrime: Tools & Capacity Building

www.combatingcybercrime.org

The screenshot displays the 'Combating Cybercrime' website interface. On the left is a dark blue sidebar with the World Bank logo and navigation options: Dashboard, Guide, Assessment, Training, Bibliography, Favorites (3), Help, and Settings. The main content area is titled 'Combating Cybercrime' and features a search bar, 'Toolkit', and 'About' buttons. Below the header, there is a list of assessments with progress bars:

- 1. Policy Framework: 71% Capacity
- 2. Legal Framework: Substantive Law: 88% Capacity
- 3. Legal Framework: Procedural Law: 52% Capacity
- 4. Legal Framework: Safeguards: 47% Capacity
- 5. Enabling Framework: 22% Capacity
- 6. Development Framework: International Cooperation: Not Started
- 7. Development Framework: Capacity Building: 15% Capacity

To the right, the 'Assessments' section includes a welcome message: 'Welcome to the assessment tool! This tool was designed to evaluate your capacity to combat Cybercrime. The assessment has been broken into (7) dimensions, corresponding with the organization of the guide. Each section asks targeted questions in order to estimate your capacity. Guidance will be offered to help you complete the assessment as you move through it. You can revisit and change your responses as you implement strategies to improve your capacity.'

Below this is an 'Overall Capacity' radar chart. The chart has seven axes representing different assessment dimensions. The 'Policy Framework' axis shows the highest capacity, followed by 'Legal Framework: Substantive Law' and 'Legal Framework: Procedural Law'. The 'Development Framework: Capacity Building' axis shows the lowest capacity. A legend indicates that the blue shaded area represents the overall capacity score.

Combating Cybercrime

Tools and Capacity Building for Emerging Economies

Thank you

David Satola

dsatola@worldbank.org



THE WORLD BANK
IBRD • IDA