



EUROPEAN LANDSCAPE CONVENTION

LANDSCAPE AWARD OF THE COUNCIL OF EUROPE

7th Session – 2020-2021

APPLICATION FORM

I. STATE CONCERNED AND APPLICANT

1. Applicant

Name of the local, regional authority(ies) or NGO(s)

**ENVIRONMENTAL DIRECTORATE
OF TIMISOARA CITY HALL,
TIMIS COUNTY, ROMANIA**

Represented by

**Ms., Landscape Eng. Oana-Janina Iacobescu
General Technical Project Coordinator**

Address:

*Blv. C. D. Loga, No 1, PC 300030,
Timisoara City, Timis County, Country Romania*

Telephone:

0040 749 149 188

E-mail:

oana.iacobescu@primariatm.ro

Description of applicant:

maximum 3 pages

Applicant presentation:

**TIMIȘOARA CITY HALL ENVIRONMENT DEPARTMENT,
GREEN SPACES AND PLAYGROUNDS SERVICE**

**EXECUTIVE DIRECTOR: ADRIAN-AMEDEO BERE-SEMEREDI
HEAD OF SERVICE: DIANA-MIHAELA NICA**

**ENVIRONMENTAL DIRECTORATE OF TIMISOARA CITY HALL,
TIMIS COUNTY, ROMANIA**

ORGANIZATIONAL STRUCTURE OF THE ENVIRONMENT DIRECTORATE:

- I. REGULATORY SERVICE AND URBAN ENVIRONMENT POLICIES,
- II. CANINE POPULATION MANAGEMENT DEPARTMENT, PEST CONTROL, DISINFECTION,
- III. GREEN SPACES AND PLAYGROUND SERVICE,
- IV. BUREAU OF MONITORING AND ENVIRONMENTAL PROTECTION,
- V. ZOO DEPARTMENT,
- VI. CHILDREN'S PARK COMPARTMENT.

The Environment Department, during 2015-2016 - the year of The Park With Gardens Project make over, had a structure of 50 positions, of which 46 were occupied positions: 27 public positions (2 public positions of management and 25 executives)

*and a number of 19 contracted professional staff.
The activity of the Environment Department is coordinated
by Mr. Adrian - Amedeo BERE SEMEREDI - Executive Director.*

*The Environment Department is an organizational structure
under the direct subordination of the Deputy Mayor,
Mr. Dan - Aurel DIACONU,
and a part of the specialized apparatus of The Municipality of Timișoara's Major, Mr. Nicolae ROBU.*

II. PROJECT OVERVIEW

2. Name of the Project	Conceptual Name: The Gardens Park, also known as Little Forest Giroc Park, and as former Lidia Park.
3. Location of the Project	<p>The Gardens Park is located in the Southern part of Timisoara, near Soarelui Zone of the City, being bordered to the:</p> <ul style="list-style-type: none"> - South - by Blv. Mareașal C-tin Prezan (former Lidia Street), - East - by Uranus Street, - West - by Versului Street, - North - by the Waldorf School grounds.

4. Summary of the Project (10-12 lines)

The Gardens Park is a heterogeneous landscape composition, which proposes a classic to modern tour of European gardens. In order to highlight the touristic and cultural potential of the area, as well as to create a unique and attractive leisure area for the citizens of the municipality, the following thematic landscaped gardens have been arranged:

- *The English Medieval Garden is a Celtic Knot inside a Labyrinth.*
- *The Biblical Garden is a round flowers bed, divided by a green hedge cross.*
- *The Italian Garden has Tuscan influences of red brick masonry, along an alley.*
- *The Modern Garden is an outdoor office with sun&air beds in the surrounding lawn.*
- *The Spanish Garden is a monastic classical garden.*
- *The Greek Garden has a mini-amphitheater as a central point.*
- *The Romantic Garden is composed of an extended Roses Collection, a water lilies lake, and an ornamental rockery.*

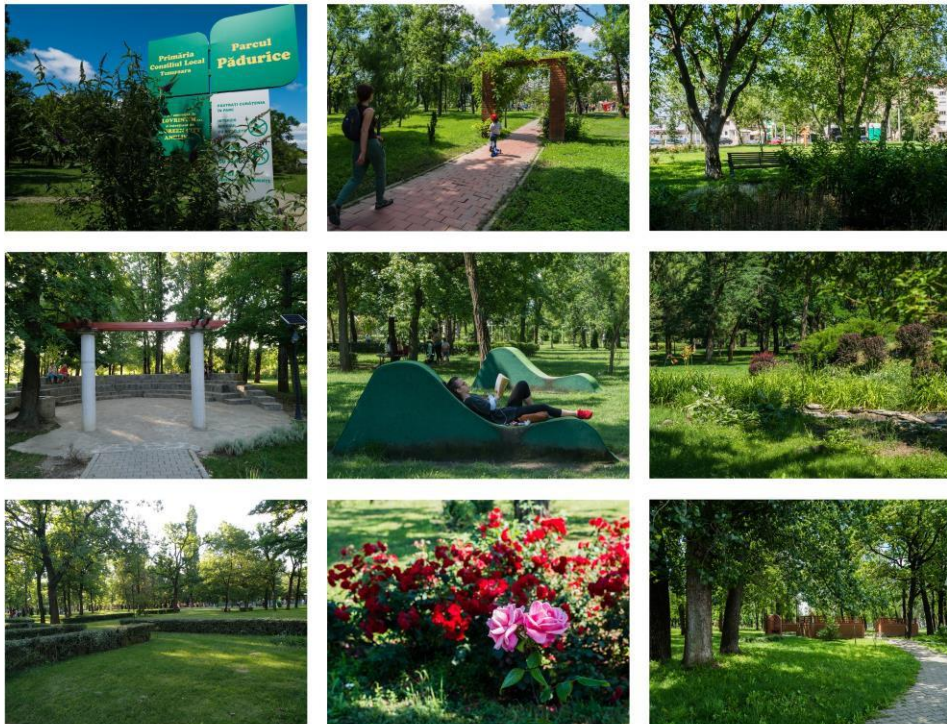
5. Photo representing the Project

(high definition - .jpg at 350 dpi) and name of the author of the photo

Photographer: *Daliana Iacobescu*
Poster Image Creator: *Sebastian Puraci*

The Gardens Park

- known as Padurice Giroc Park, and Lidia Park -
Timisoara, Romania



<https://thegardensparktm.wixsite.com/pmtro>
An Urban Landscape From 2016

6. Website of the Project *(if existing)*

<https://thegardensparktm.wixsite.com/pmtro>
<http://dmmt.ro/>

III. CONTENT OF THE PROJECT

THE GARDENS PARK - URBAN LANDSCAPE ARCHITECTURE - TIMISOARA CITY, TIMIS COUNTY, COUNTRY ROMANIA

Our team presents the urban landscape development project: Modernization of Lidia Park (formerly Little Forest Giroc), the current Little Forest Giroc Park, known and appreciated by the inhabitants of Timisoara, with its conceptual name of The Park with Gardens – The Gardens Park. This project is the result of an initiative of the Environment Directorate of the City Hall of Timisoara, for which the work has started since 2010. This initiative is maintained and carried out to date, pursuing a strategy to identify, expand, develop and modernize as many green areas as possible within urban agglomerations, respecting the latest European standards. In this case it was intended to modernize an existing green objective with a certain degradation state, as a response to the leisure needs for outdoor activities for various categories of the urban population.

Location of The Gardens Parks

The Gardens Park is located in the Southern part of Timisoara, near the district Soarelui, being bordered to:

- South, by Blv. Maresal C-tin Prezan (formerly Lidia Street),
- East, by Uranus Street,
- West, by Versului Street,
- North, by the Waldorf School grounds.



Short History

In 1910, the area on which the park is located was far outside Timisoara.

In 1929, a small nursery in Timisoara moved from the nowadays Vasile Pârvan Boulevard to the area in question, extended by 11 ha, where a 42 sqm greenhouse, a house and a stable were additionally built. During the war, the dendrological material matured, the land was afforested and could no longer be used for plantations. After 1950, part of the nursery was cleared of wild vegetation and the dendrological nursery was redeveloped.

Tree production increased from 1000 pcs. in 1950, to 27,500 pcs. in 1965. The production of conifers has increased from 500 pcs. in 1950, to 8,000 pcs. in 1965. It also increased the range of special ornamental value species. Most of the old trees in the parks and streets of Timisoara were grown here.

The activity continued until 1973 when the nursery moved to the neighbouring locality Ciarda Roşie, where it still operates today. The former nursery was thus abandoned, the dendrological material remaining here growing until the whole area was afforested, so the area is now called " Little Forest Giroc Park". Once the districts Calea Girocului and Zona Soarelui were built, this patch becomes a recreation refuge for the dwellers, a much appreciated green oasis spread among the concrete blocks. The Giroc Forest is heavily populated due to its proximity to its two large block-of-flats districts and it becomes Lidia Park.

The first arrangements were made after 1990, when the wilderness of the area was reduced a little by the massive deforestation of the coppice. The general style of the resulting composition was mixed, given the vegetation that developed naturally, in combination with rectangular paths of alleys, rose flaps and trimmed fences.

In 1999, the alleys were partially withdrawn. The layout of the alley network largely complied with the access road scheme of the old nursery. On the Southern boundary, on a small portion of the surface, the network of alleys was created based on landscape criteria. In the area with rarer vegetation, resinous groups were introduced, thus increasing the ornamental value of the area. During the same period, the entire surface was also leveled, turf was planted and benches were added. When this arrangement was initially made, it wasn't taken into account a unified landscape conception. From a practical point of view, the outdoor furniture addition was sketchy.

In 2010 the space was identified as a good candidate for functional and landscape modernization. In general, the green area had a character of forest massif, sparse in places. Mostly the green decoration was the result of the development of abandoned vegetation in the disused nursery, resulting in a small forest massif, which was a suitable background for landscape modernization. The main functions served by the studied green area were: recreation, transit, playground for children.

The concept pursued in the creation of this park was based on a "theme in theme" stylistic composition, spontaneously inspired by the words of a future beneficiary who, when asked: "- What kind of park would you like in this place?", replied: "- I grew up in this place and I've always wanted it to be... a garden." Given the generous area, this response led to the idea: "Why just one garden and not more?".

This idea inspired the conceptual name of the arrangement - **a Park with Gardens – The Gardens Park** – which has a heterogeneous landscape composition and proposes a tour of European gardens from classic to modern. The various elements introduced have a unity in the diversity of the resulting landscape.

In 2010 the project to revitalise this green area is started. The project was developed and executed by a multidisciplinary engineering and architecture team, which brought together expertise in landscape architecture, environment, civil architecture, construction engineering and urban development. The intention of making this collection of themed gardens is to enjoy and be useful both to the large number of current inhabitants of the area and to the tourists, who have the opportunity to find here a corner of a garden of their native countries.



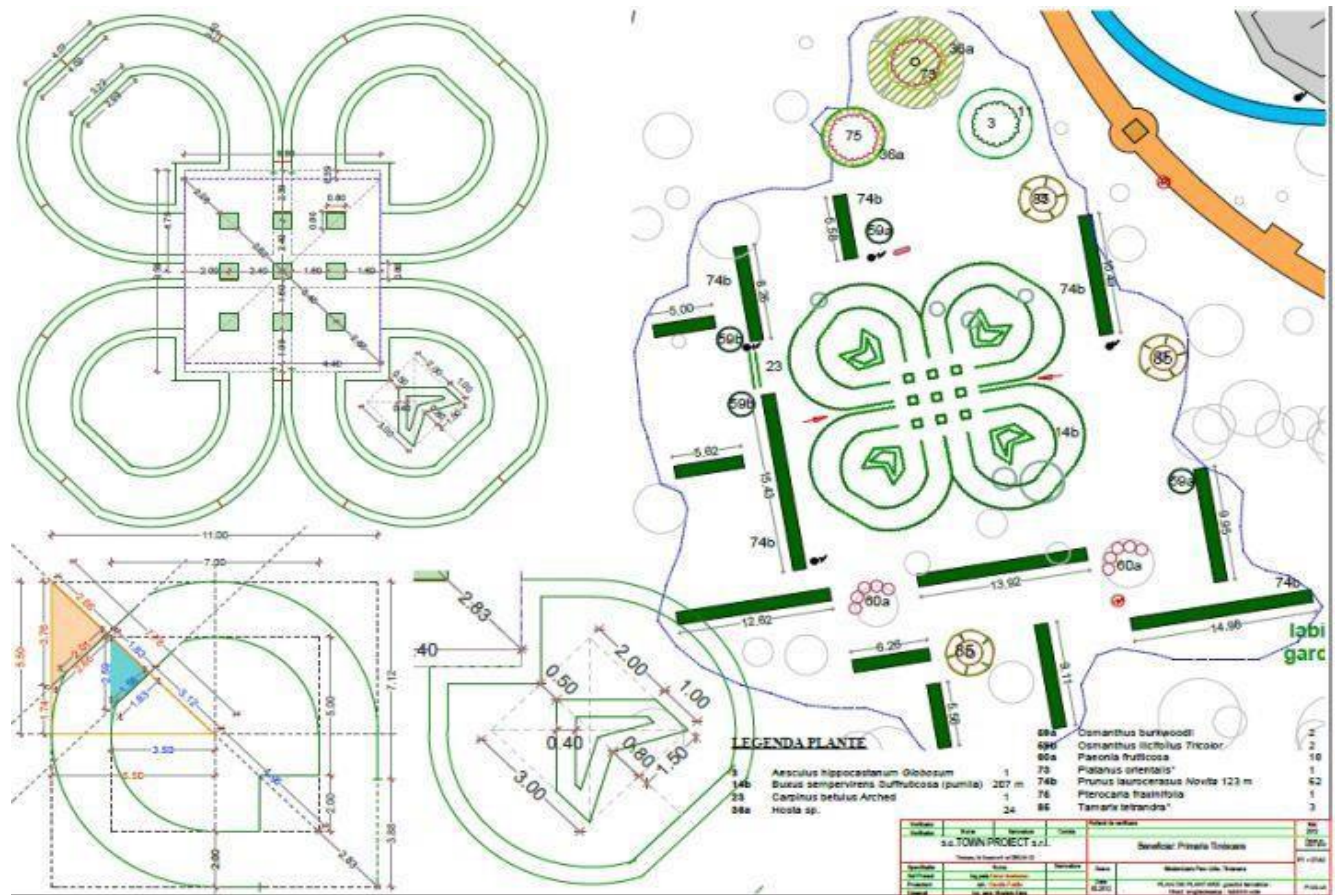
The site before landscaping - 2015

The Landscape ornamental Concept

In order to highlight the tourist and cultural potential of the area, as well as to create a unique and attractive recreational area for the citizens of the municipality, the following thematic landscape centres have been set up:

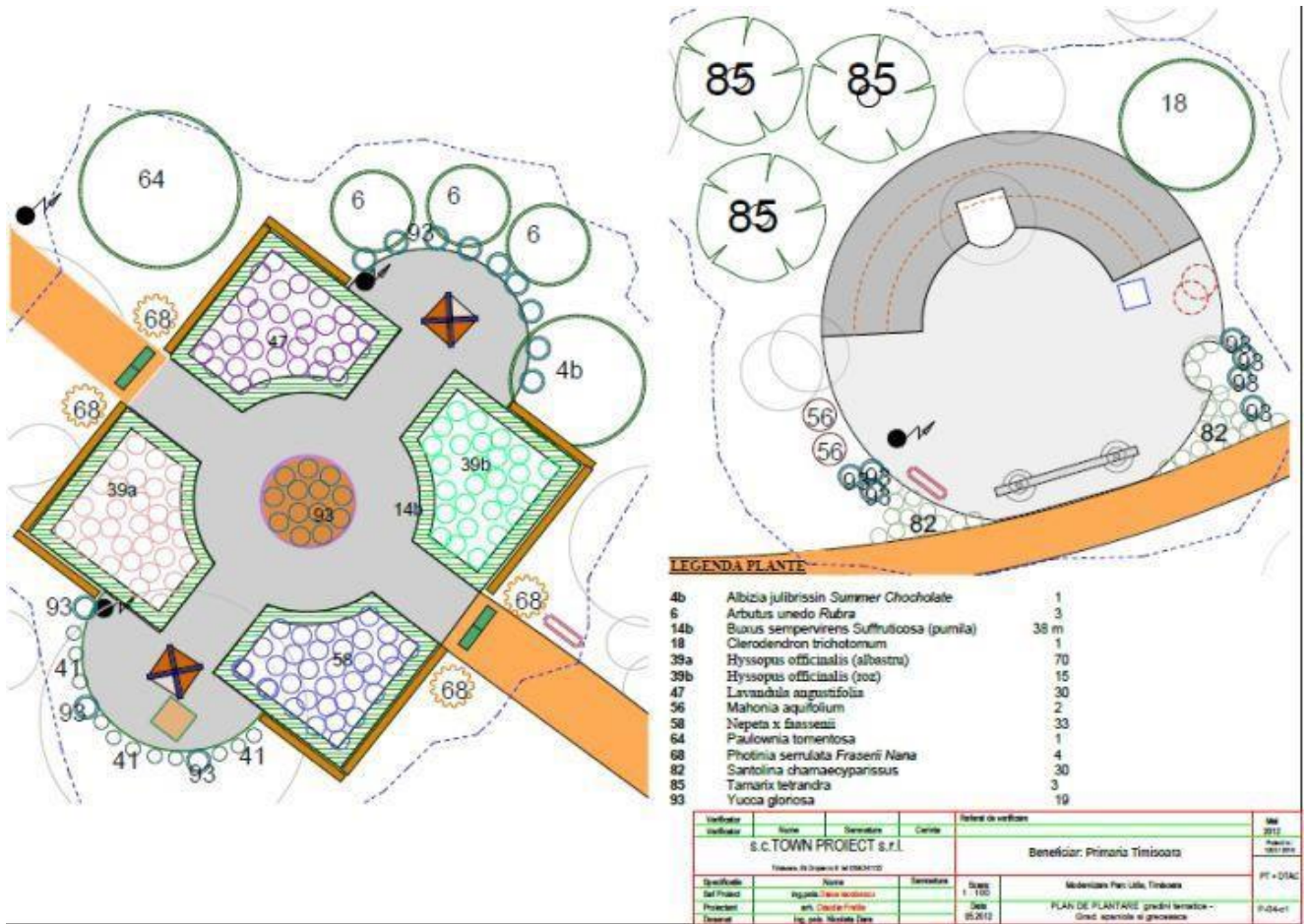
- ✓ The English garden. Labyrinth.
- ✓ Spanish garden;
- ✓ Greek garden;
- ✓ Biblical garden;
- ✓ The modern garden. Outdoor office;
- ✓ The Italian garden;
- ✓ The romantic garden. The Rosarium – The Rose Collection.

Each garden is succinctly described to visitors by explanatory panels:



The English Garden

The English Garden has as its compositional centre a Celt-inspired ground floor in the form of a four-leaf clover. It is framed a schematic maze of medium-height hedges that create natural booths typical of the medieval era. The green lawn is the traditional background of this garden.

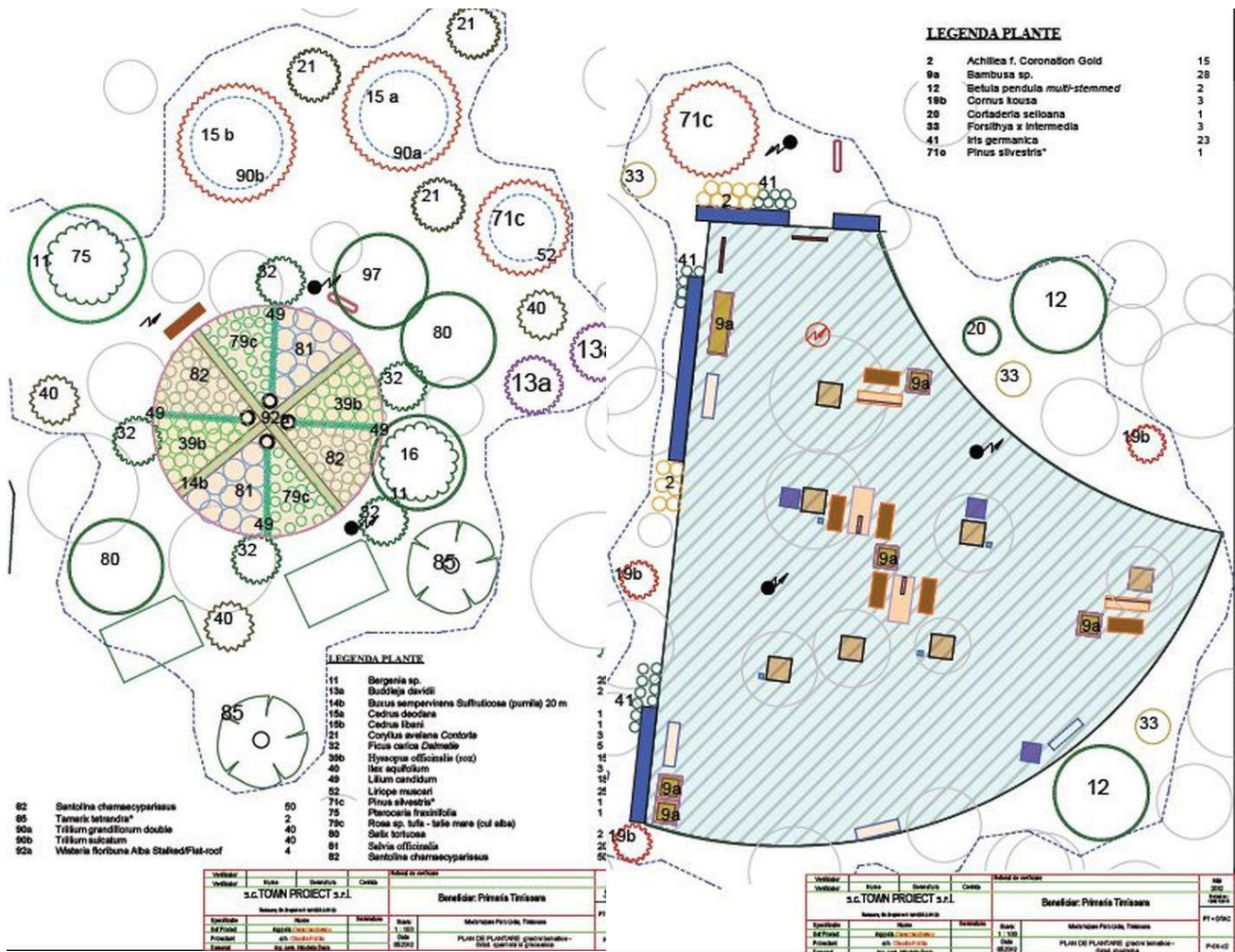


Spanish Garden

The Spanish Garden is decorated according to the current monastic landscaping. The path of the alleys is the shape of the cross in the approach code of the Spanish gardens. This garden is located near an existing church, in order to grant it and thus frame this arrangement. The Spanish garden is accessible via arcade portals.

Greek Garden

The Greek Garden is decorated with plants with permanent green foil. The characteristic elements of the Greek Mediterranean style are: a mini-amphitheatre with a seating role and access made through a portal of Greek columns, brought together by a pergola.

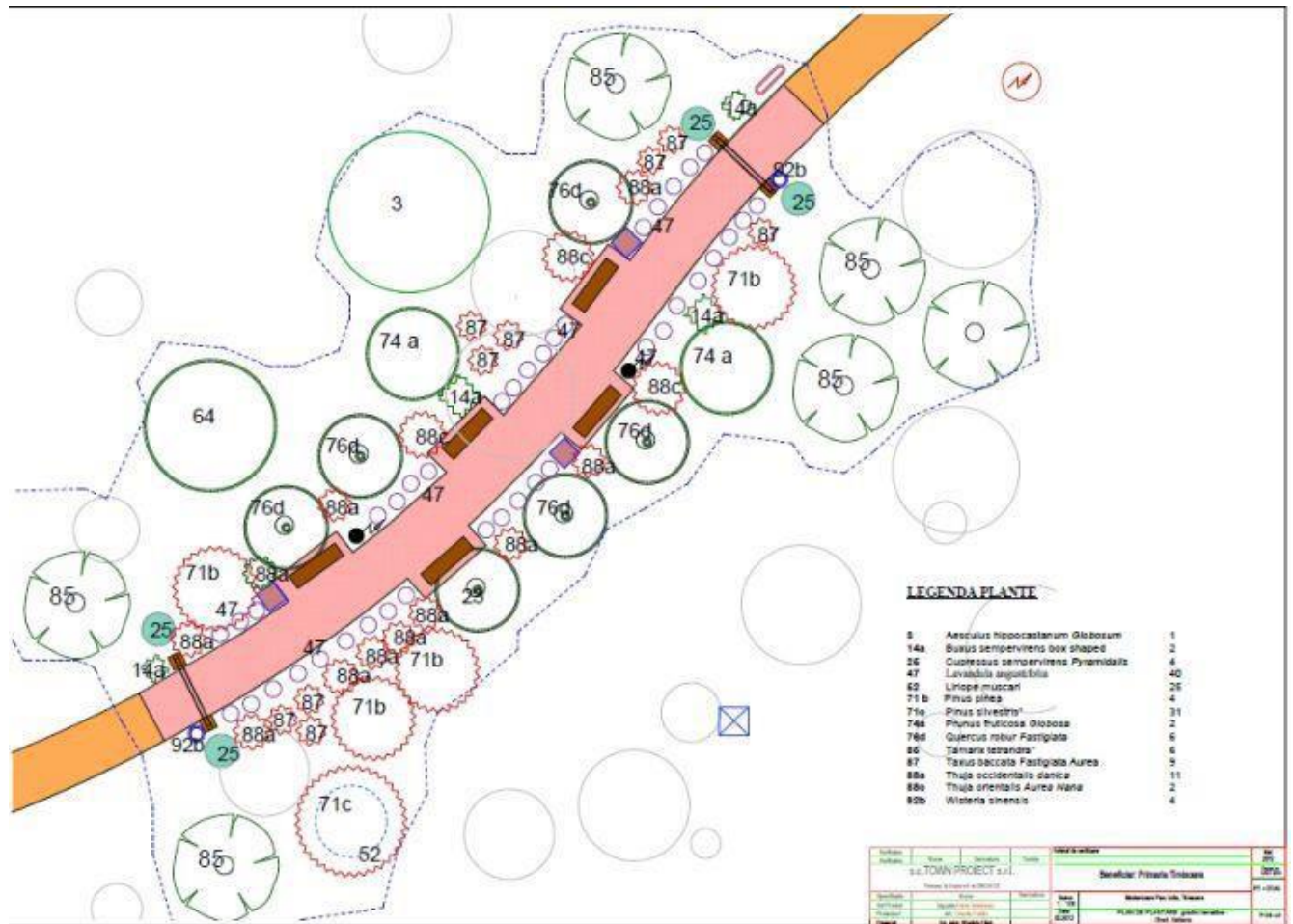


Biblical Garden

The Biblical Garden is a collection of plants and trees mentioned in the texts of the Christian Scriptures. This garden consists of a circle, crossed by a hedge. The biblical garden is traditionally located near a public source of drinking water. This garden is a place of rest and contemplation.

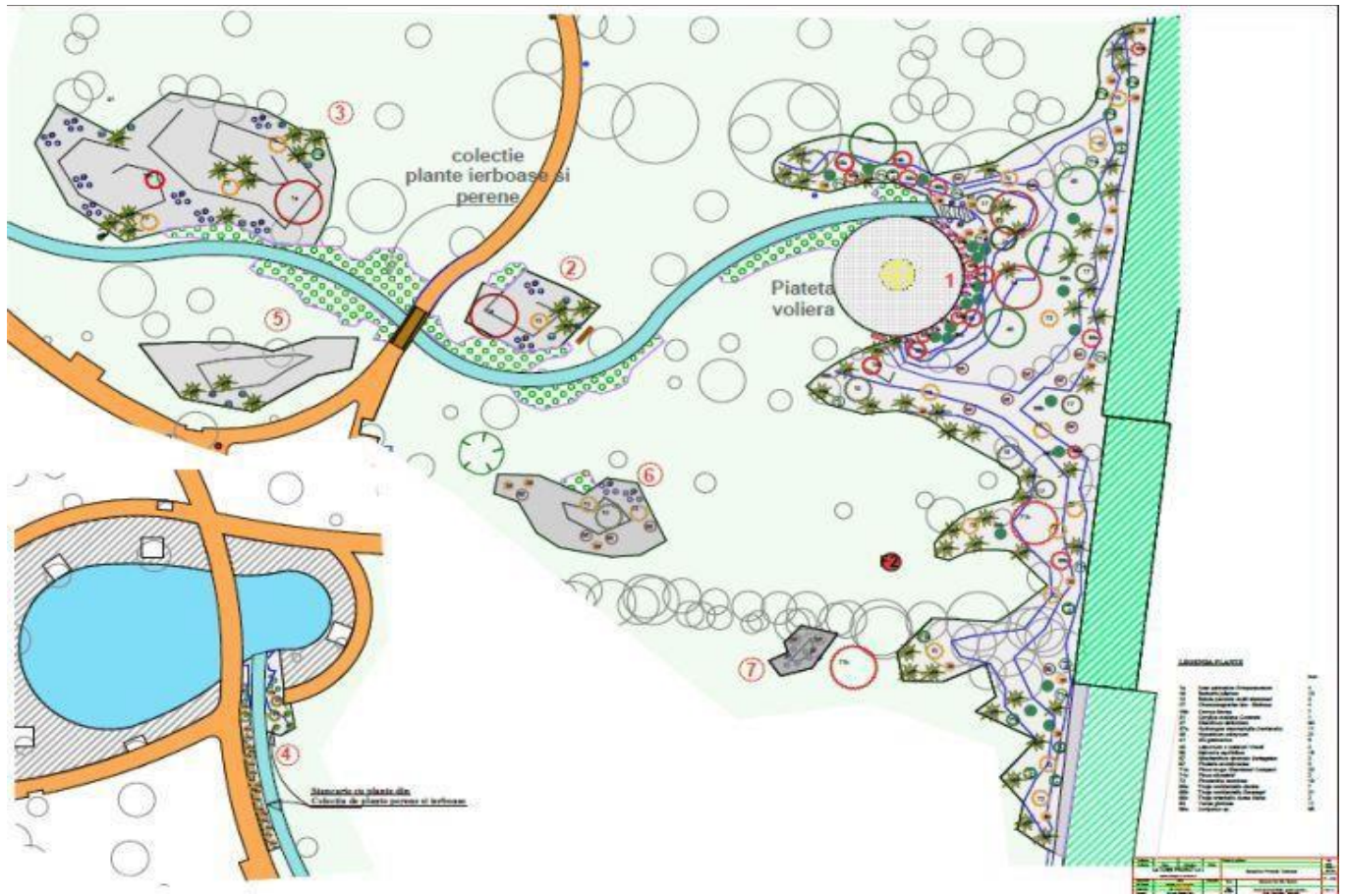
Modern garden

The Modern Garden is defined by a heterogeneous composition composed of natural stone, concrete, metal construction and living plants. The outdoor office furniture has an industrial design with an ergonomics suitable for the study, in an area serviced with wireless internet. Modern relaxation spots, chromatically integrated into the green of the lawn, are located in the perimeter of the study area.



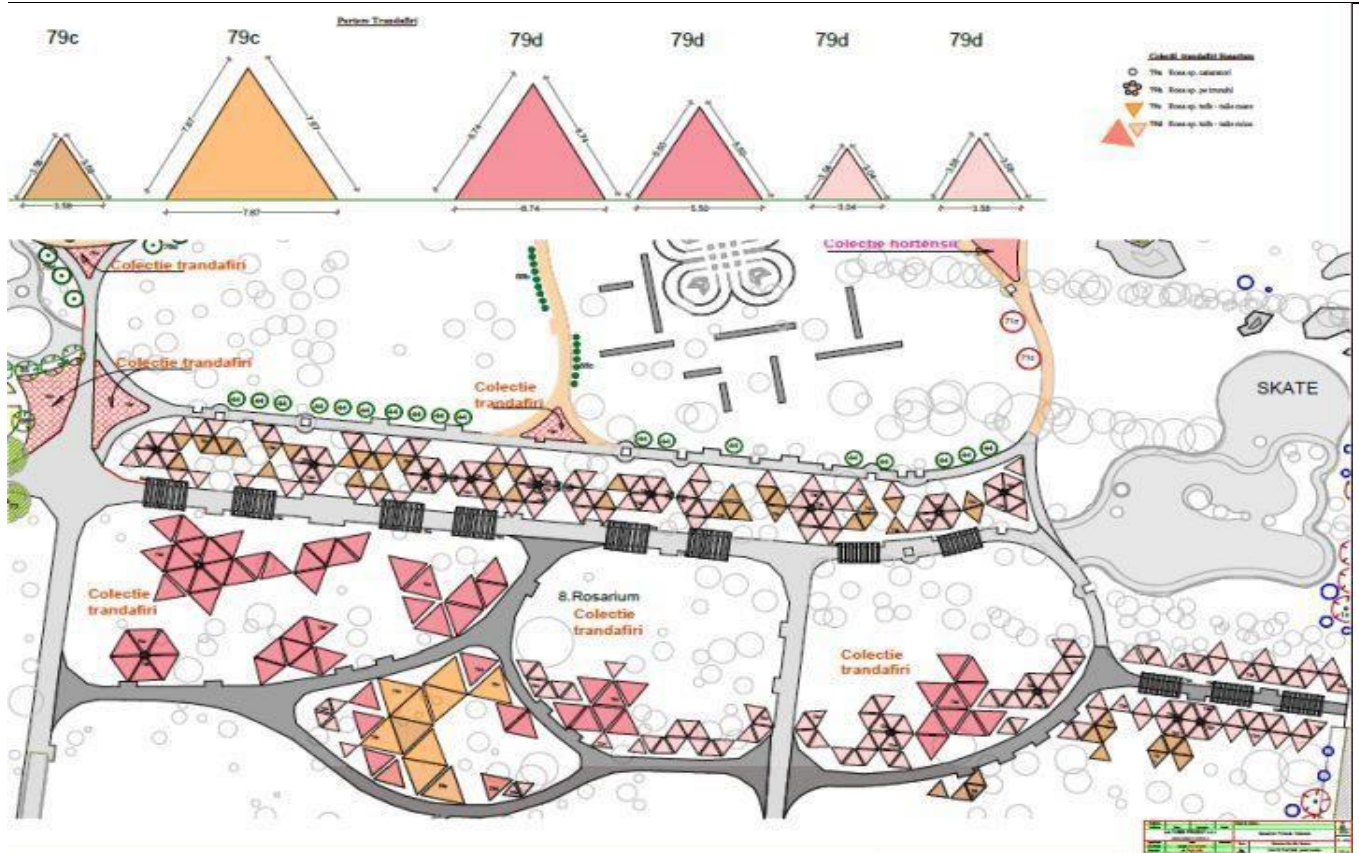
The Italian Garden

The Italian Garden is highlighted by geometrical shapes, associated with lavender flower beds. The masonry element which defines this composition is the red brick. The Italian Garden is an arrangement along an alley, accessible through a brick pillars portal connected by a pergola.



The Romantic Garden

The Romantic Garden occupies about one third of the entire surface of this theme-in-theme composition type of landscape called "The Park with Gardens" - which suggests, by the whole of this park arrangement, a journey through the European Gardens. The Romantic Garden has, as points of attraction, a water lilies lake, a birdhouse, decorative assembly of rocks and an extensive collection of roses. The Romantic Garden can be accessed from the alleys of all the other gardens: the English, the Biblical, the Italian, the Modern, the Spanish, the Greek, and it is partially shaded by climbing roses tunnels.



The Rosary, as the city's Rose Collection, has been enriched with new species. Practically the existing area planted with roses was doubled in time continuously, even after the conclusion of the modernization of this project, using as a source different parks in Timisoara and other collections of roses. Various more varieties of climbing roses were introduced, being exposed on the 11 pergolas of the wide alley crossing this romantic garden.

The park also includes the following Functional Centers:

The playground, measuring 7,175 square meters, is equipped with 45 playground equipments for school and preschool children, with both normal skills and disabilities, as well as a football field. There is also a **Dirt BMX Bike Path** included in the playground.

The Parking Lots measure 1,300 sqm on Uranus Street and 701 sqm on Versului Street.

A **dedicated Dog Kennel** is arranged on an area of 574 square meters and it is equipped with 4 play equipments for dogs.

Other Technical Indicators of the arrangement

The total landscaped surface is of 80,870.56 sqm.

The Paved Alley Area is 6,763.2 sqm.

Urban Furniture amounts to:

Benches - 115 pcs.
Trash cans - 114 pcs.
Pergolas - 11 pcs.

The comfort of the night crossing was increased by supplementing the park's lighting, by installing **77 pcs. solar lighting poles**.

Functional And Ornamental Hydrotechnical Equipment:

- **The mixed irrigation system** has a coverage of 63,852.85 sqm;
- **The ornamental lake** measures 341 sqm;
- **Decorative watercourse** with an area of 123 sqm.

Media Public choices for outdoor activities in the Garden Park:

The Cultural Bazaar organized annually by the Association **Timișoara 2021 - European Capital of Culture** and the **Artistic Tribe Association** known as **Trib'Art**, includes theatre performances, jazz, pop and rock music concerts, activities for children of all ages and craft fairs.







https://www.facebook.com/pg/BazarCulturalTimisoara/photos/?tab=album&album_id=124772212260722&ref=page_internal

Another summer Event for all ages is asFalt art. That includes music, dance classes, painting exhibitions, and a lot of other activities for all ages children and teenagers, even Tai Chi.









<https://www.facebook.com/asfaltart.ro/videos/1079096152226243/>

https://www.facebook.com/pg/asfaltart.ro/photos/?ref=page_internal

Every summer, the dance brings together amateurs and professionals to the rhythms of Kizomba, in the square of the Greek mini-amphitheater.



https://ms-my.facebook.com/events/1286912684810535/?active_tab=about

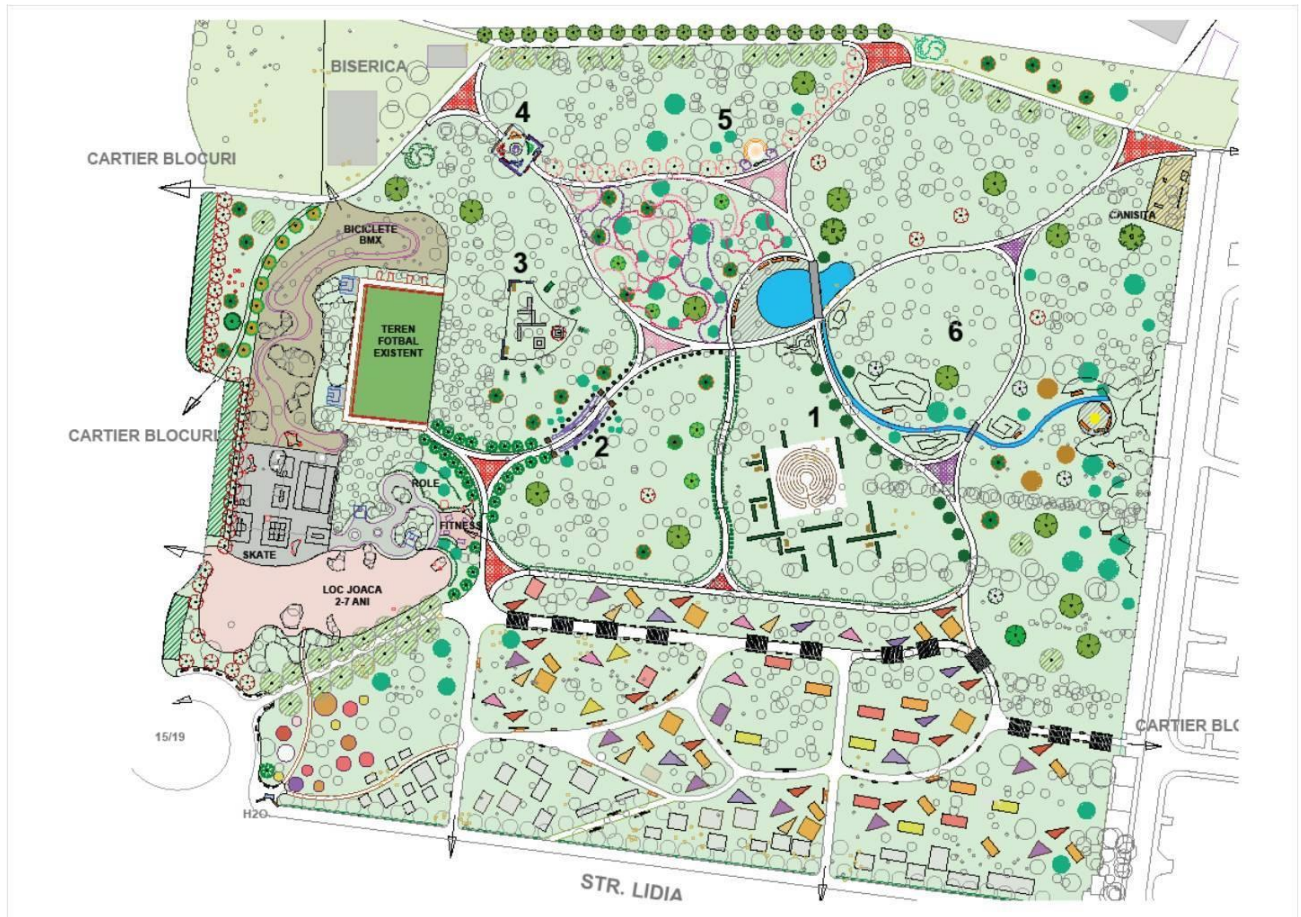
Medieval battles annually attract the nostalgic of knight tournaments.



<https://renasterea.ro/lupte-medievale-la-ceas-de-seara-la-timisoara/>

The dendro-floristic selection was aimed for diversifying the color of the arrangement and obtaining seasonal decor for the whole year:

- **deciduous and coniferous trees 307 pcs.** from the genera Acer, Quercus, Pinus, Albitia, Tilia, Tamarix, Salix, Cercis, Fagus, Liriodendron, Liquidambar, Robinia, Taxodium, Cupressocyparis, Laburnum etc.
- **deciduous and resinous shrubs 2,165 pcs.** - varieties of Buddleja, Weigella, Cotoneaster, Cornus, Cupressus, Thuja, Deutzia, Spirea, Euonymus, Hydrangea, Viburnum, Forsythya, Magnolia, Ilex, Juniperus, Lagerstroemia, Piracantha, Yucca, Berberis, Coryllus, Rhododendron and others.
- **hedge 5,221 pcs.** Ligustrum, Prunus laurocerasu and Buxus.
- **climbing flowering plants 399 pcs.** of the genera: Rosa, Wisteria, Parthenocyssus, Hedera and Lonicera.
- **perennial flowering plants 1,480 pcs.** from the genera Rosa, Paeonia, Hemerocallis, Hosta, Sedum, Perowskya, Iris, Bergenia and others.
- **decorative herbs 90 pcs.** from the genera Cortaderia, Festuca, Mischantus, Pennisetum.
- **aquatic plants 30 pcs.** - specimens of Nupharus, Mentha and Eichhornia sp.



General Landscape Architecture of Gardens Park

Natural damages

In 2016, floods resulting from torrential rains temporarily transformed the entire park into a lacustrine zone and, more importantly, transformed the Italian Garden into a Venetian landscape, just before the inauguration of the Garden Park.

A storm of 118 km / h from 17.09.2017 caused massive damage to the vegetation and the equipment, which were repaired during maintenance works.

Other changes in layout

The mini-Skate-Park facility was relocated to a student area, at the residential demand required by the noise caused by its enthusiastic users. The concrete area is now used for organizing outdoor shows, drawing competitions on asphalt, organizing games, art exhibitions, and dancing.

Official Sites Of The Gardens Park:

- ✓ <https://thegardensparktm.wixsite.com/pmtr>
- ✓ <http://dmmt.ro/>

Photography/Video:

- ✓ *Sections: nature, urban, 7 gardens portfolio - Photo album The park with Gardens - 2019, by Hobby Photographer Petru Csokany*
- ✓ *Section: urban, Photos&Videos from Trib'Art Association's urban events - 2017, 2019, represented by Ovidiu Florian Andriş*
- ✓ *Presentation pictures in Posters&Photo Albums GARDENSPARK Landscapes & GARDENSPARK Profiles - 2020, by Free Lancer Professional Photographer Daliana Iacobescu*
- ✓ *Video&Posters Presentation of The Gardens Park - 2020, by Professional Photographer Sebastian Puraci, S.C. Vivo Media Production S.R.L.*
- ✓ *Aerial Filming, Amateur Video of The Gardens Park - 2020, by Oana-Janina Iacobescu*

Facebook Park Events&Friends:

- ✓ <https://www.facebook.com/watch/?v=1079096152226243>
- ✓ <https://www.facebook.com/watch/asfaltart.ro/>
- ✓ https://www.facebook.com/pg/BazarCulturalTimisoara/photos/?tab=album&album_id=123121692425774&ref=page_internal
- ✓ https://www.facebook.com/pg/BazarCulturalTimisoara/photos/?tab=album&album_id=124013969003213&ref=page_internal
- ✓ https://www.facebook.com/pg/BazarCulturalTimisoara/photos/?tab=album&album_id=124772212260722&ref=page_internal
- ✓ <https://www.facebook.com/pages/Parcul-Lidia/2135770396499182>
- ✓ <https://www.facebook.com/pages/Parc-Padurice-z-Soarelui/417440268278168>
- ✓ https://www.facebook.com/pg/janinasgardens/about/?ref=page_internal

The following ecological directions were taken into account in the landscaping

- *The reduction of pollution through traffic and landfills has been minimized during development. Thus, the volumes of materials resulting from the demolition of the old alleys were reused within the construction site to achieve the structure of ornamental rock for the romantic garden. It was covered with fertile soil resulting from the digging of the decorative lake.*
- *In order to reduce the urban pollution specific to the area, species with specific sensitivities to certain toxins were avoided, in favor of those capable of retaining dust and other toxins.*
- *The supplementation of the night lighting was done by installing solar poles, without electricity consumption.*

General initiative and coordination:

Timișoara City Hall Environment Department,
Green Spaces And Playgrounds Service
Executive Director: Adrian-Amedeo Bere-Semeredi
Head of Service: Diana-Mihaela Nica

Technical project financing and execution:

The financing sources of this project were provided by the local budget of the Timișoara Municipality. The total value of the investment (VAT included) was 1,599,989 thousand Euro. The effective duration was 12 months. The handing over of the fully landscaped and equipped site took place in 2016.

The technical elaboration team of the project:

SC TOWN PROJECT S.R.L.

General Manager: Eng. Andrei Tolgyi
 Technical Project Coordinator: Landscape Engineer Oana-Janina Iacobescu
 Digital Design: Landscape Engineer Nicoleta Dorica Elena Dara
 Architectural Works Coordinator: Arch. Adriana-Claudia Frațilă
 Construction Resistance Manager: Eng. Stefan Justin Simion Ilie
 Responsible For The Supervision And Technical Verification Of The Installations (R.S.V.T.I.):
 Eng. Marius-Dan Șerbănescu

Project execution:

SC LOVRINTIM S.R.L.
 Landscape Coordination: Eng. Daniela Acasandrei
 General Manager: Eng. Sorin Doda

*Typewritten:
 Landscape Engineer
 Oana-Janina Iacobescu*

<p>7. Start of the Project <i>The project must have been completed three years ago</i></p>	<p>The Garden Park Project has started landscaping on the designated grounds from March 2015. The landscaping project The Gardens Park has been completed in 12 months.</p>
<p>8. Partners</p>	<p>-</p>
<p>9. Financing bodies</p>	<p>Timisoara City’s Local Budget.</p>

10. Central aims of the Project

The central and the accomplished aims of the project were:

1. *To improve the general health state of the community and the urban environment;*
2. *To increase the area’s safety;*
3. *To organize a reliable framework for active leisure for people of all ages;*
4. *To create an original ornamental landscape project.*
5. *To obtain a new touristic city attraction.*

11. Outcome

The outcome of this Gardens Park Landscaping Project was:

1. *Outcome desired to be maximized: evidence of increased health, safety, free time activities and aesthetics of the area.*
2. *Outcome desired to be minimized: reducing misdemeanors, criminal activities and other dangers in the area.*
3. *Unexpected but gratifying outcome:
 - the city inhabitants spontaneous choice of this landscaped*

area as a favourite scene for various artistic cultural actions.

- *the use of The Gardens Park as teaching material for the students of Landscape Architecture, for practical seminars of the Faculty of Horticulture within the University of Agronomy in Timisoara.*

12. Sustainable territorial development

Is the project part of a sustainable development policy?

Does it contribute to the enhancement of environmental, social, economic, cultural or aesthetic values of the landscape? How?

Has it successfully countered or posed a remedy to any pre-existing environmental damage or urban blight? How?

The Gardens Park Project is one of the beneficial results of a sustainable development policy in the advisory document (available only in Romanian) listed on the website www.primariatm.ro: ***Timisoara City's Green Space Development Strategy 2010-2020 (Strategia dezvoltării spațiilor verzi a Municipiului Timisoara 2010-2020)***. The Gardens Park Project contributes to the enhancement of environmental, social, economic, cultural, and aesthetic values of the urban landscape as one of the youngest large landscaped green area of the city. Apart from the aesthetic and environmental improvements of this green area, of about 8 ha, the arrangement serves as a stage for urban cultural actions at professional level: Cultural Bazaar and AsFalt Art – both fests having an annual development, and at amateur level: dancing, medieval fights, music concerts. This project was a way of solving pre-existing environmental damage by reviving a deserted nursery with aging trees, posing a danger of falling during storms and with defective facilities, which posed a danger to the population. By the landscaping carried out, by increasing the comfort of the park's transfer, leisure time and by the addition of illumination - the criminal and vandalism index of the urban area concerned has been reduced.

13. Exemplary value

Can the project be considered of exemplary value? Why?

Which are the good practices that it implemented?

The Gardens Park can undoubtedly be considered a value of social, cultural and environmental importance, for all the reasons set out in its description. This project has also established a theoretical and practical standard of functional and decorative landscaping for future urban green landscaping and specialised schools.

14. Public participation

Does the project actively encourage the public's participation in the decision-making process? How?

Is the project in line with the wider policies implemented by national, regional or local authorities?

The Project is a follow up of general public's choices and needs for functional facilities and aesthetic organised open space in the residential urban area. In time, the project was improved as a public decision making process, taking into consideration creativity and innovation, organizational change, organizational learning, organizational culture, and others. It is also in line with wider eco-policies implemented by national, regional, local and European authorities.

15. Awareness-raising

Is the project effectively increasing the public's awareness of the importance of landscape in terms of human development, consolidation of European identity, or individual and collective well-being? How?

The Gardens Park landscaping project effectively increases the public's awareness of the importance of human development, and the consolidation of European identity, and the individual and collective well-being. This project is an accomplished goal in sustainable development, that is making the city and its human settlements to be inclusive, safe, resilient and sustainable. The project provides universal access to safe, inclusive and accessible green and public spaces, in particular for children, older persons and persons with disabilities.

IV. ADDITIONAL MATERIAL

- Photos (10 max.): jpeg format - 350 dpi high definition
- Posters (2 max.): pdf format high definition or jpeg - 350 dpi high definition
- Video (5 minutes max.): mpeg-2 format. It is recommended to present a video (even of amateur quality)

The requested audio-visual materials will be also to find on the official sites of The Gardens Park.

- ✓ <https://thegardensparktm.wixsite.com/pmtro>
- ✓ <http://dmmt.ro/>