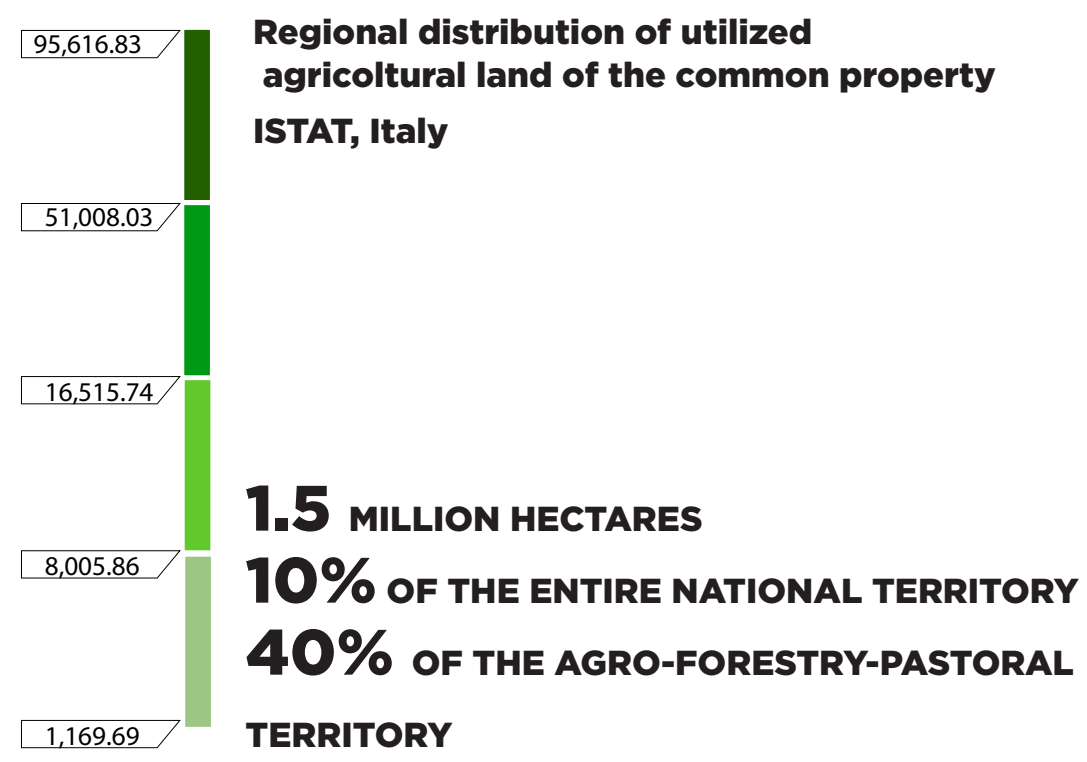


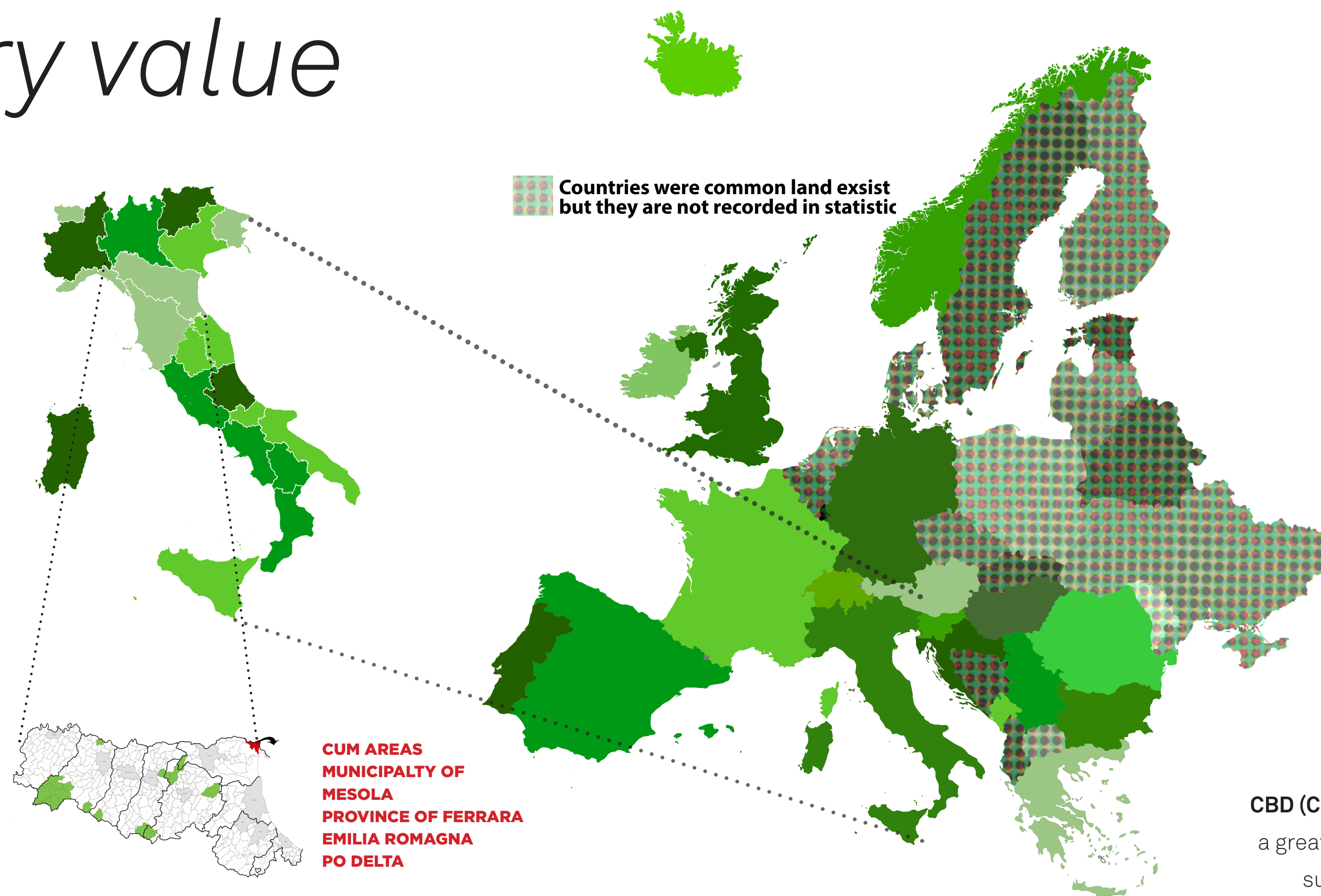
02 Exemplary value



COMMON PROPERTY IN ITALY

State-owned land and common property extend over approximately 1.5 million hectares in Italy, i.e. a significant proportion involving more than 10% of the entire national territory (about 40% of the agro-forestry-pastoral territory)

LAW no. 168, dated November 20, 2017,
 "Regulations on common property" - article 2



PROPRIETÀ COLLETTIVE
Commons
 BIENS COMMUNAUX
COMMONTIES
 COMUNAL / USOS COLECTIVOS
Common land
BALDIOS
Common property

THE EUROPEAN PERSPECTIVE

Commons of high environmental value are found in most European countries, but only few States have in the last century provided way for assuring their legal recognition

CBD (Convention of Biodiversity) Programme of Work:

a great opportunity to enable committed communities such as the Uomini di Massenzatica to contribute to our common goal of assuring a **healthy, just, and sustainable future**

URBAN REGENERATION OF AREAS WITH SEVERE ENVIRONMENTAL PROBLEMS



Safeguarding of the environmental resources promoted by the Habitat Directive and the Natura 2000 Network, for the Fossil Dunes of Massenzatica, and protection and recovery of the wetlands of the natural lakes, the fragments of biodiversity under threat by illegal dumping and pollution.



2018 - The Dunes of Massenzatica, fragile landscapes, as fragments of biodiversity, the building blocks for the reconstruction of a cohesive and vital environmental system.

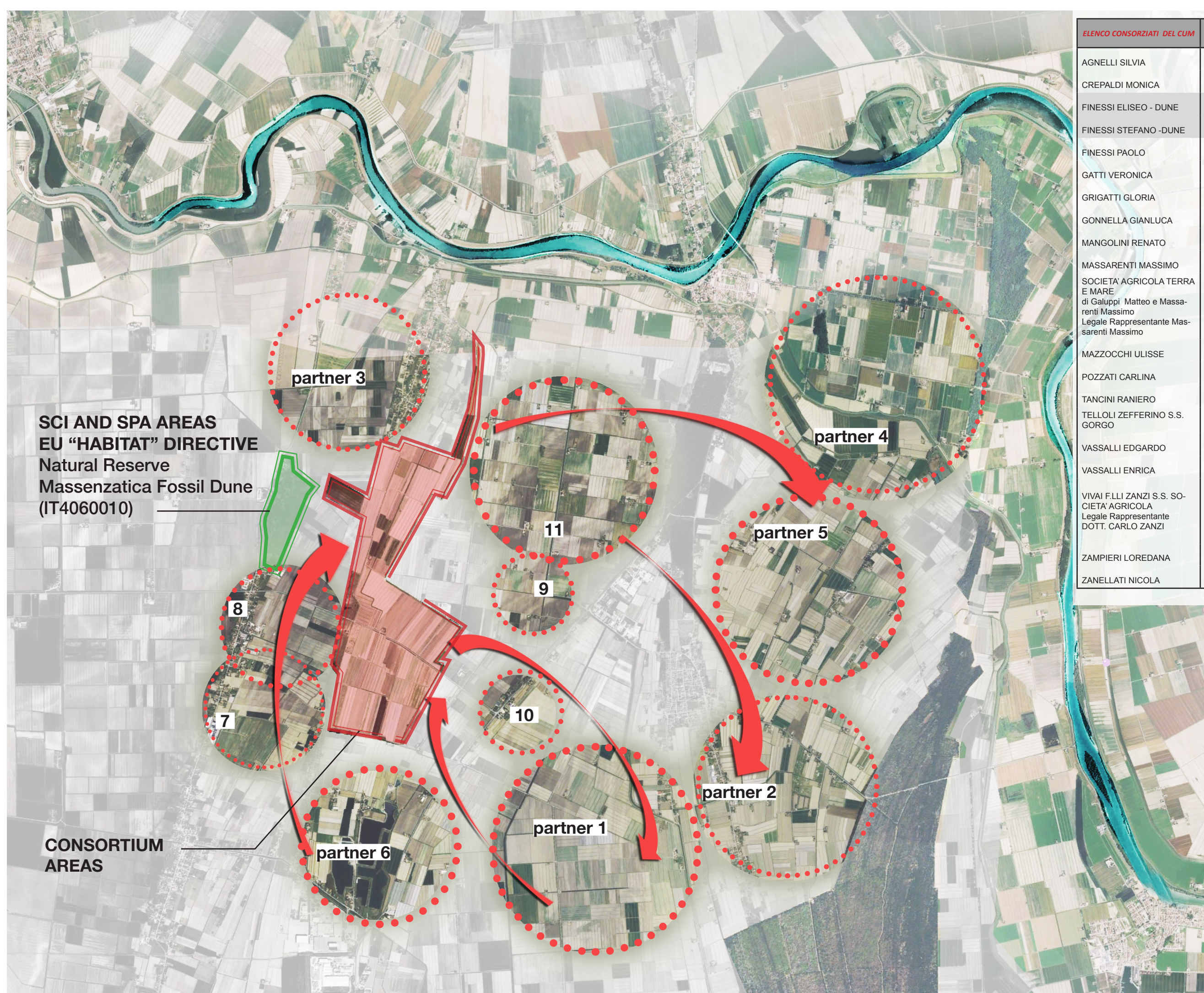


2018 - Ancient natural lakes: natural areas recovered by the Consortium. 'Cells of resilience' and biodiversity for the construction of green and blue infrastructures.

04 Awareness - raising

The Consortium's 'Landscape Contract'

The objectives of the project are the result of the interactions between the components of the landscape and the community, with each intimately connected to the other, the foundational binomial of the Consortium's actions. These are based on its work ethics and its daily commitment to its community values that are to be handed down to future generations.



THE LOCAL PARTNERSHIP

Extension of the entrepreneurial model with positive social capital for trialing of a 'Landscape Contract' with 20 companies, with the expansion of the actions across the entire farmed area of over 2,500 hectares, by exporting and developing the social, economic and landscape values of the Consortium, in reciprocal growth with the areas of fragile landscapes of the Po Delta Biosphere Reserve.

'Vision for the future':
 sharing of historical-cultural values and of the social-oriented model of the rural territory.

future generations

