

# Historic environment, landscape, water and community in England

Dr Hannah Fluck  
Head of Environmental Strategy,  
Historic England

[Hannah.Fluck@HistoricEngland.org.uk](mailto:Hannah.Fluck@HistoricEngland.org.uk)

@hannahfluck



Water meadows, Herefordshire



Isle of Athelney and East Lyng,  
Somerset. 2014 floods.

Top risk to UK identified in UK Climate Change Risk Assessment (CCRA2) 2017 is 'Flooding and Coastal Change risks to communities, businesses and infrastructure'.

## UK Climate Change Risk Assessment 2017

Synthesis report: priorities for the next five years



## River Basin Management Plans and Flood and Coastal Erosion Risk Management Strategy: under review



- increasing interest in natural flood management;
- recognition of importance of engaging people and communities;
- opportunity for heritage and landscape?

- 25-year Environment Plan
- Environment Bill
- Agriculture Bill



Underpinned by  
'public  
environmental  
goods and services'

*Public goods and services, natural capital and ecosystem services increasingly underpin environmental decision-making and management. The historic environment has been left out of these approaches. Historic England is working to address this.*

A Green Future: Our 25 Year Plan to  
Improve the Environment



# Where does heritage fit in?

- heritage as environment – the environmental value of heritage
- environment as heritage – the cultural value of the environment
- cultural capital?
- learning from the past

This can also help make the case for the positive role of the historic environment – beyond ‘mitigation of impact’.

*Historic England has commissioned pilot studies to test how this might work and inform guidance on natural capital and heritage.*

## *Natural Capital*

2014 floods in Somerset. The Saxon Burh of East Lyng and monastic site at Isle of Athelney are visible as islands above the flood water





# Blackdown Hills AONB case study- An integrated approach to valuing heritage- Field boundaries and linear features

Project 7740  
Tim Youngs & Bill Horner

Marine and Historic Environment

Heritage, Natural Capital & Ecosystem Services  
Project Introduction Meeting  
*Historic England, 23 March 2018*

Tyne to Tees Marine Case Study  
Dorset Stour Case Study

Antony Firth  
Fjordr Limited

[www.fjordr.com](http://www.fjordr.com)

Heritage, natural capital  
and ecosystem services:  
Coastal grazing marshes

Maria Medlycott  
Project Officer

PLACE  
SERVICES



## Heritage, Natural Capital and Ecosystem Services

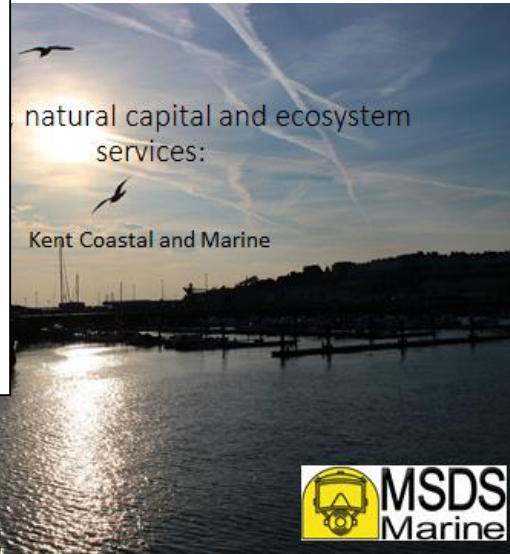
**Peak District Drystone Walls  
Lower Severn Vale Linear Features  
Buildings and their boundaries**

John Powell  
Jeremy Lake  
Rob Berry



natural capital and ecosystem  
services:

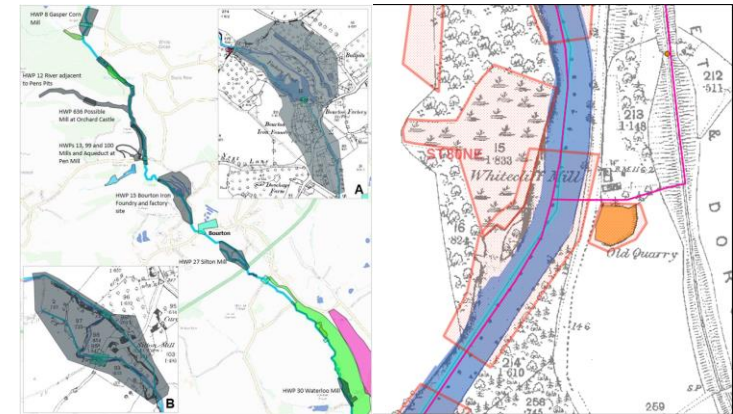
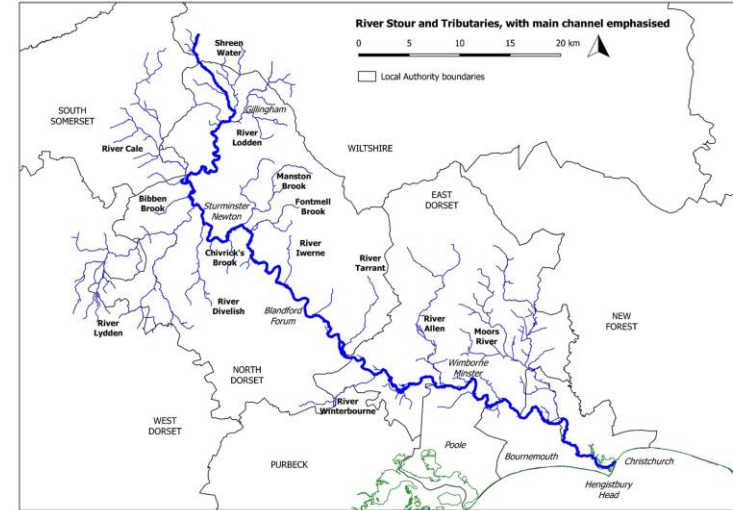
Kent Coastal and Marine





# River Stour, Dorset – characterisation of a watercourse - Anthony & Emma Firth, Fjodr

- increase awareness and integration of historic character of watercourses in catchment management;
- develop a method for identifying historic character of watercourses within a catchment;
- examine scope for engaging public in better understanding of historic character of watercourses;
- disseminate information to heritage managers, watercourse managers and the general public.





Thank you for listening  
and do get in touch to share  
approaches and ideas

[Hannah.Fluck@HistoricEngland.org.uk](mailto:Hannah.Fluck@HistoricEngland.org.uk)

@hannahfluck