





HERICOAST

Interreg Europe



European Union
European Regional
Development Fund

Heritage policies of coastal and river regions - HERICOAST

Kåre Kristiansen

Vest-Agder County Council, Lead partner

krk@vaf.no

Partnership

Comhairle Contae Dhún na nGall
Donegal County Council

Vest-Agder fylkeskommune

AUST-AGDER FYLKESKommUNE

CLUE+
RESEARCH INSTITUTE FOR CULTURE, COGNITION, HISTORY AND HERITAGE

VU
VRIJE UNIVERSITEIT AMSTERDAM

CIVILSCAPE

Fundețul Tulcea

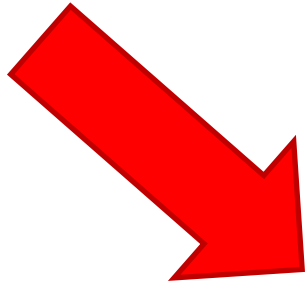
Leartibai
Garapen Agentzia

Junta de Castilla y León

REGIONE MOLISE

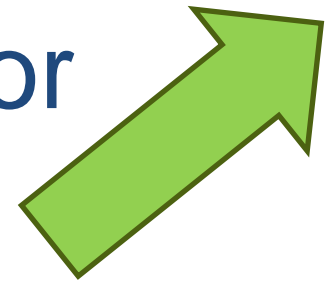
Map labels: Donegal, Ireland, United Kingdom, Denmark, Norway, Agder, Latvia, Lithuania, Belarus, Russia, Poland, Ukraine, France, Switzerland, Austria, Hungary, Slovakia, Croatia, Bosnia & Herzegovina, Serbia, Bulgaria, Italy, Molise, Tulcea, Portugal, Spain, Castilla y León, Turkey.

Rationale



Decline of traditional
maritime economic activity

Increased use of the coast for
recreational purposes



Key output



Lessons learnt

3 key types of policies which form landscape development in peripheral coastal and river regions:

- **Heritage management**
- **Nature preservation**
- **Coastal tourism**

Lessons learnt

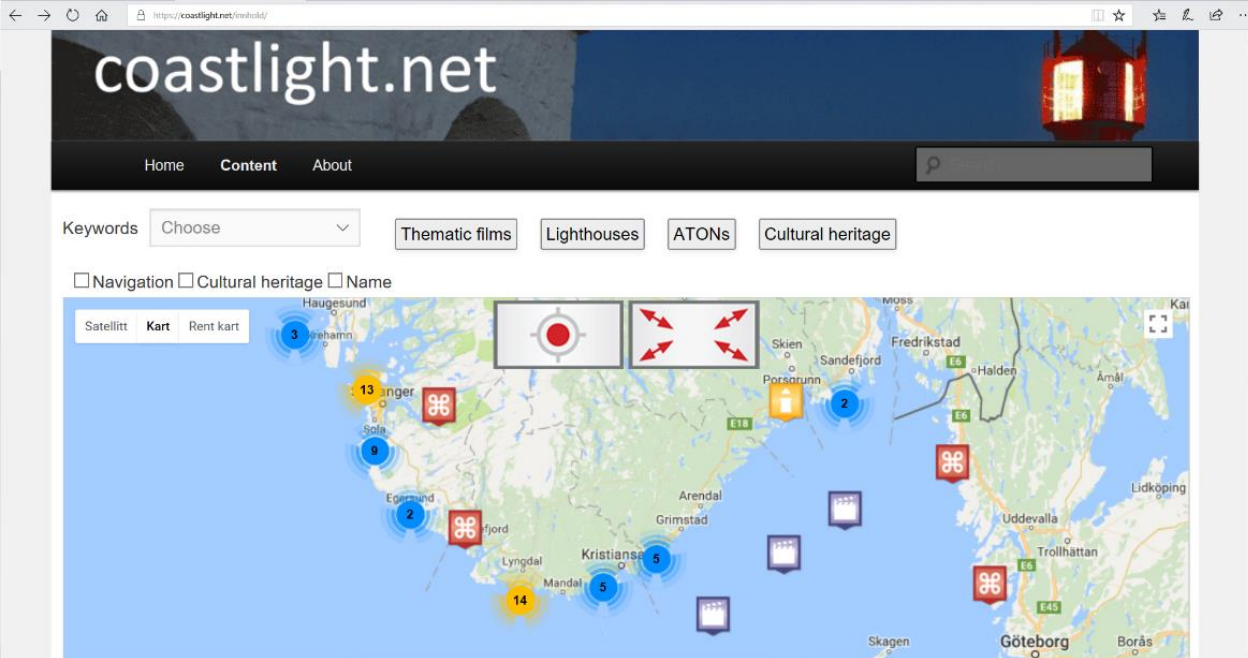
3 key types of policies which form landscape development in peripheral coastal and river regions

- **Heritage management** → **revitalisation of historic interconnectedness**
- Nature preservation
- Coastal tourism

Heritage management



Comhairle Contae
Dhún na nGall
Donegal County Council



Lessons learnt

3 key types of policies which form landscape development in peripheral coastal and river regions

- Heritage management → revitalisation of historic interconnectedness'
- Nature preservation → safeguarding environment & securing common access
- Coastal tourism

Nature preservation

The map displays the following logos and regional callouts:

- Comhairle Contae Dhún na nGall Donegal County Council**: Located in the northwest of Ireland.
- Vest-Agder fylkeskommune**: Located in the southwest of Norway.
- AUST-AGDER FYLKESKommUNE**: Located in the south of Norway.
- CLUE+ RESEARCH INSTITUTE FOR CULTURE, COGNITION, HISTORY AND HERITAGE** and **VRIJE UNIVERSITEIT AMSTERDAM**: Located in the Netherlands.
- CIVIL SCAPE**: Located in the Balkans region.
- Leartibai Garapen Agentzia**: Located in the Basque region of Spain.
- Junta de Castilla y León**: Located in the north-central part of Spain.
- Regiunea Molise**: Located in the south of Italy.
- Fundatia Tulcea**: Located in Tulcea, Romania.

Lessons learnt

3 key types of policies which form landscape development in peripheral coastal and river regions

- Heritage management → revitalisation of historic interconnectedness
- Nature preservation → safeguarding environment & secure common access
- Coastal tourism → *maintenance of jobs and viable society*

Coastal tourism



**Comhairle Contae
Dhún na nGall**
Donegal County Council



**Vest-Agder
fylkeskommune**



**AUST-AGDER
FYLKESKommUNE**





Impact

Managing the intersection of different types of symbolic resources of the coastal landscape

- **19 good practices identified;**
- **6 regional action plans;**
- **15 different measures to improve the management of heritage in the coastal landscape.**



HERICOAST

Interreg Europe



European Union
European Regional
Development Fund

Thank you!

Questions welcomed



Project smedia