

Water landscape in Poland



Photo by Piotr Chara

Adaptation of the European Siekierki – Neurüdnitz bridge for tourism purposes



Małgorzata Kosewska
Nature Conservation Department
General Directorate for Environmental Protection

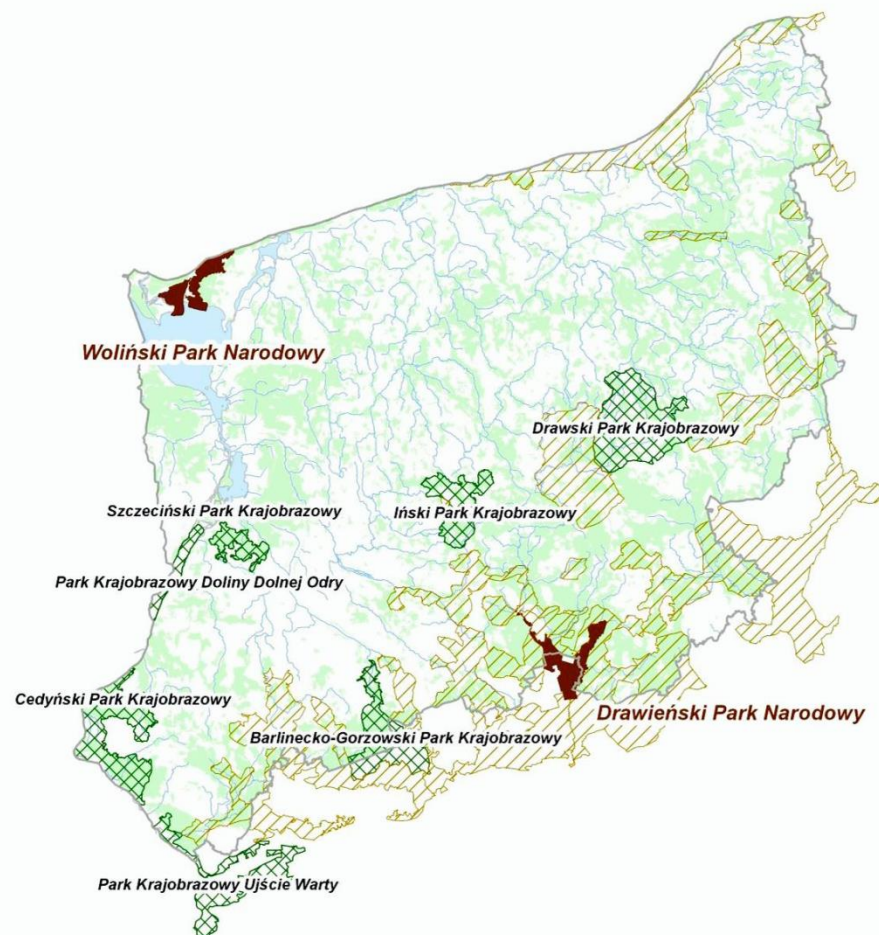
The Landscape Parks Complex of the West Pomeranian Voivodeship

Landscape Parks

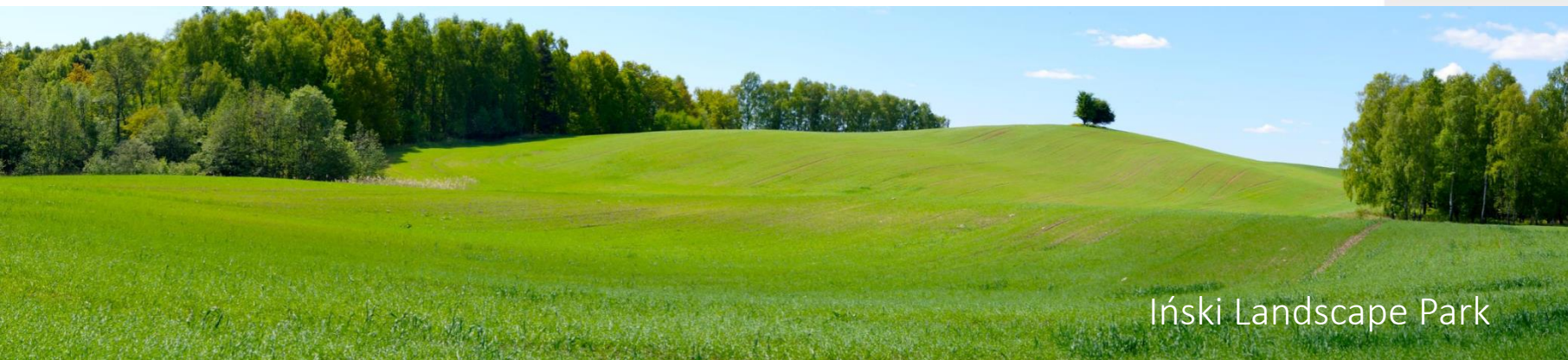
cover the areas protected for their particular environmental, scientific, cultural and landscape values serving to preserve and popularise these values in the conditions of sustainable development.



- **6 landscape parks**
- **119,000 ha**



A quick glimpse...



Iński Landscape Park

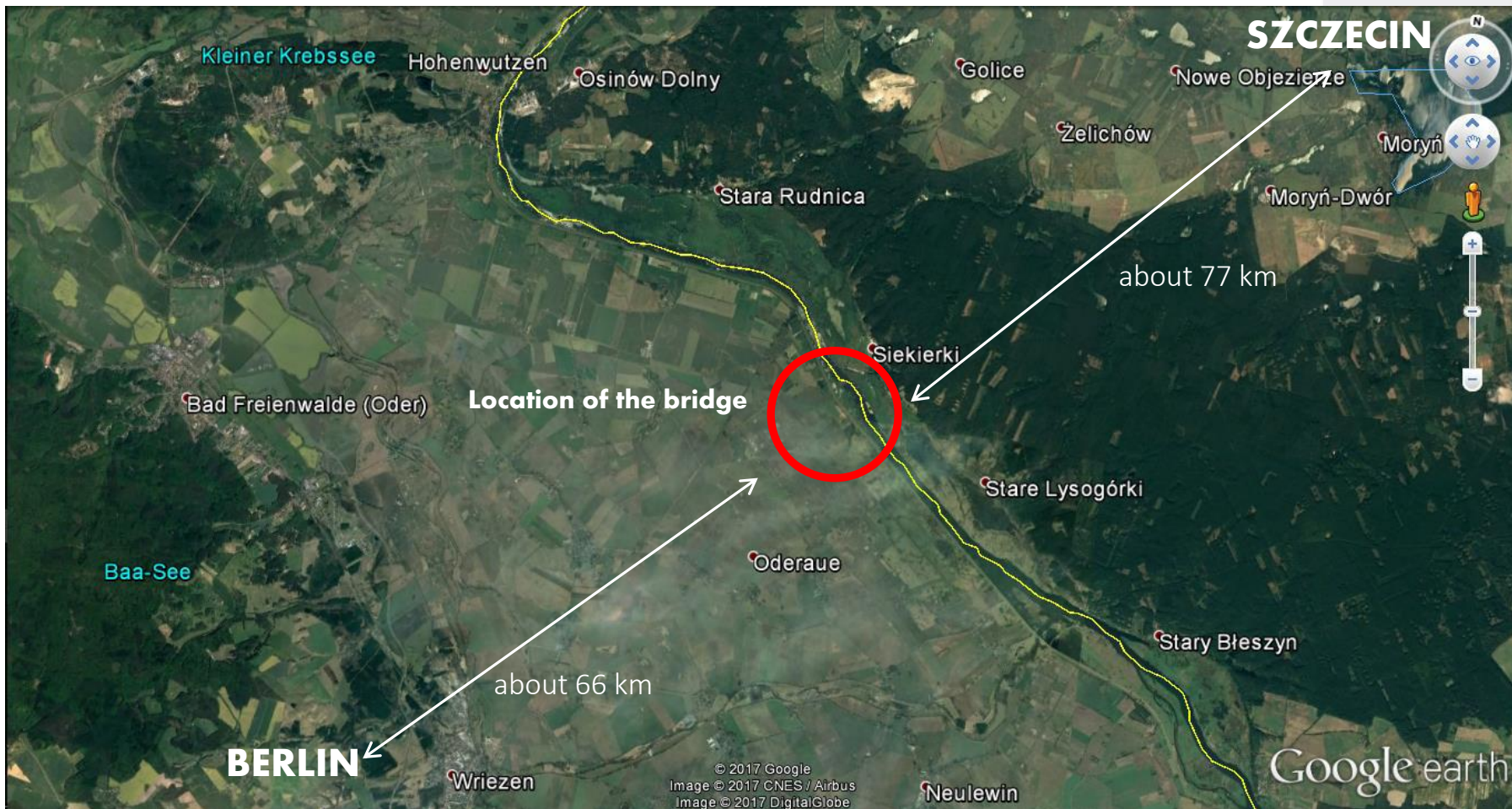


Szczeciński Landscape Park



Drawski Landscape Park

Siekierki – Neurüdnitz bridge



Today...



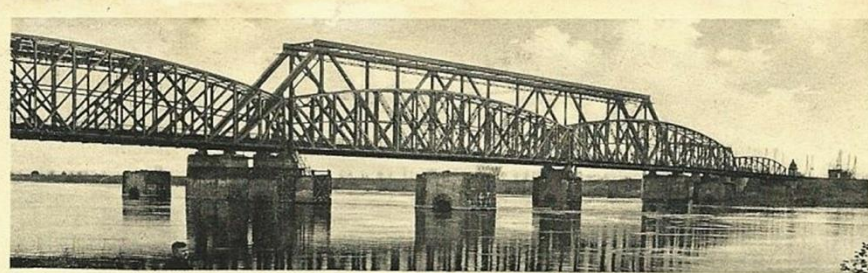
- **total length – 660 m**
- **2 spans @ 330 m each**
- **110 m mineral island**
- **the longest bridge on the Oder river**

fot.Skórka



GENERALNA
DYREKCJA
OCHRONY
ŚRODOWISKA

The history...



Käckerick Am.



Gruss vom Bahnhof Zäckerick Alt-Rüdnitz
Oder Brücke

Nowadays...









But it is not only the bridge, but also its surroundings...

Oder Valley
Cedyński Landscape Park
Lower Odra Valley Landscape Park

Photo by Piotr Chara



GENERALNA
DYREKCJA
OCHRONY
ŚRODOWISKA









INTERREG V-A Interreg V A Co-operation Programme Meklemburgia - Pomerania / Brandenburg / Poland



Project - "Adaptation of the European Siekierki - Neurüdnitz bridge for tourism purposes"

- Landscape Parks Complex of West Pomeranian Voivodeship in partnership with the German Barnim-Oderbruch Office
- Total project cost amounts to EUR 3.6 million



The following project tasks will be implemented:

- Adaptation of bridge as a pedestrian/cycle path, with a viewing platform;
- Active protection of horned owl (*Bubo bubo*) by installation of artificial breeding platforms within a 10 km radius of the bridge;
- Workshops for local Polish and German communities to demonstrate the opportunities provided by the bridge as a tourist attraction;
- An advertising film and media spots as promotion of the project and tourist product in the region;
- A closing conference.



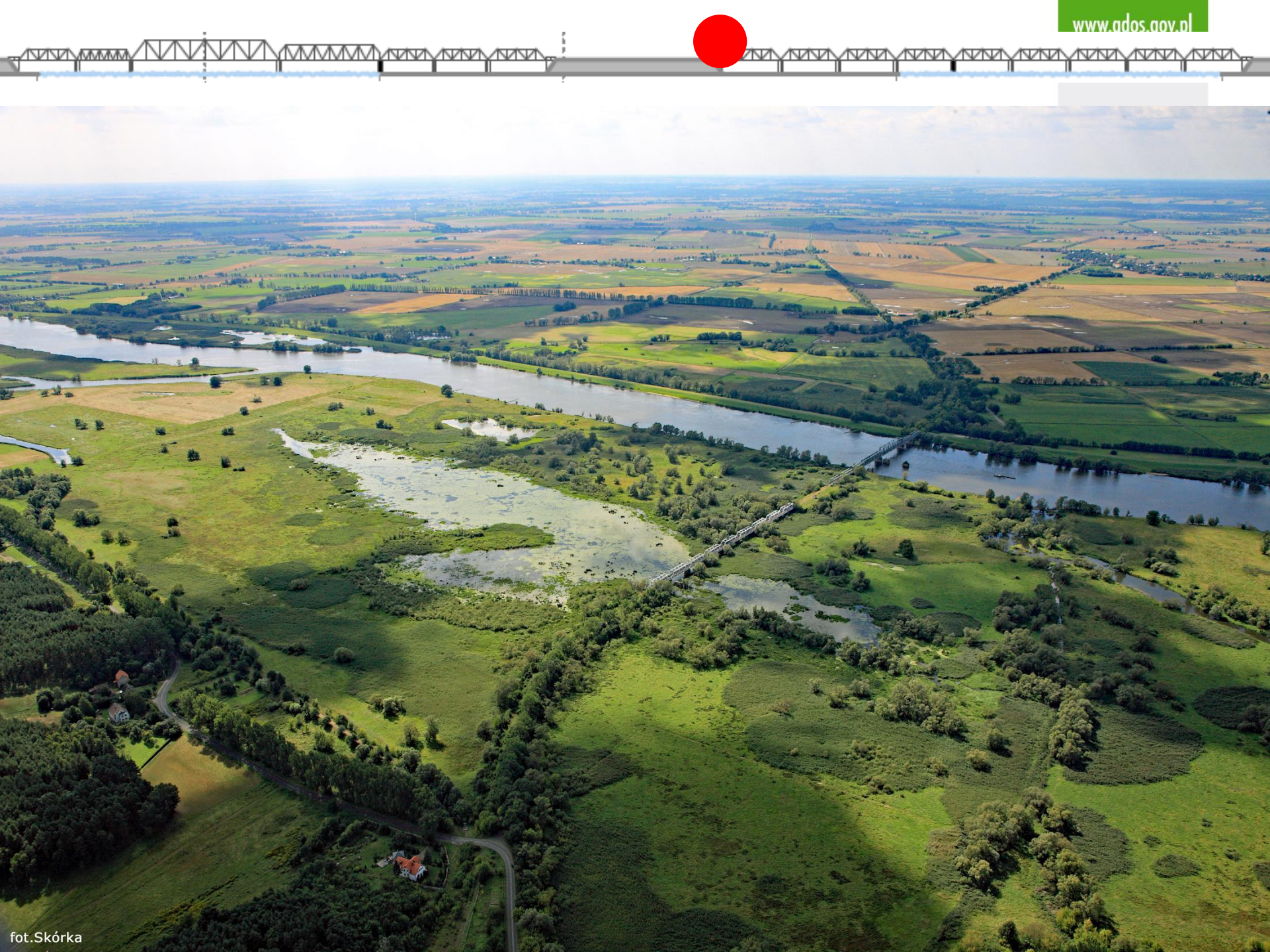
Deutsche Strombrücke



Polnische Flutbrücke

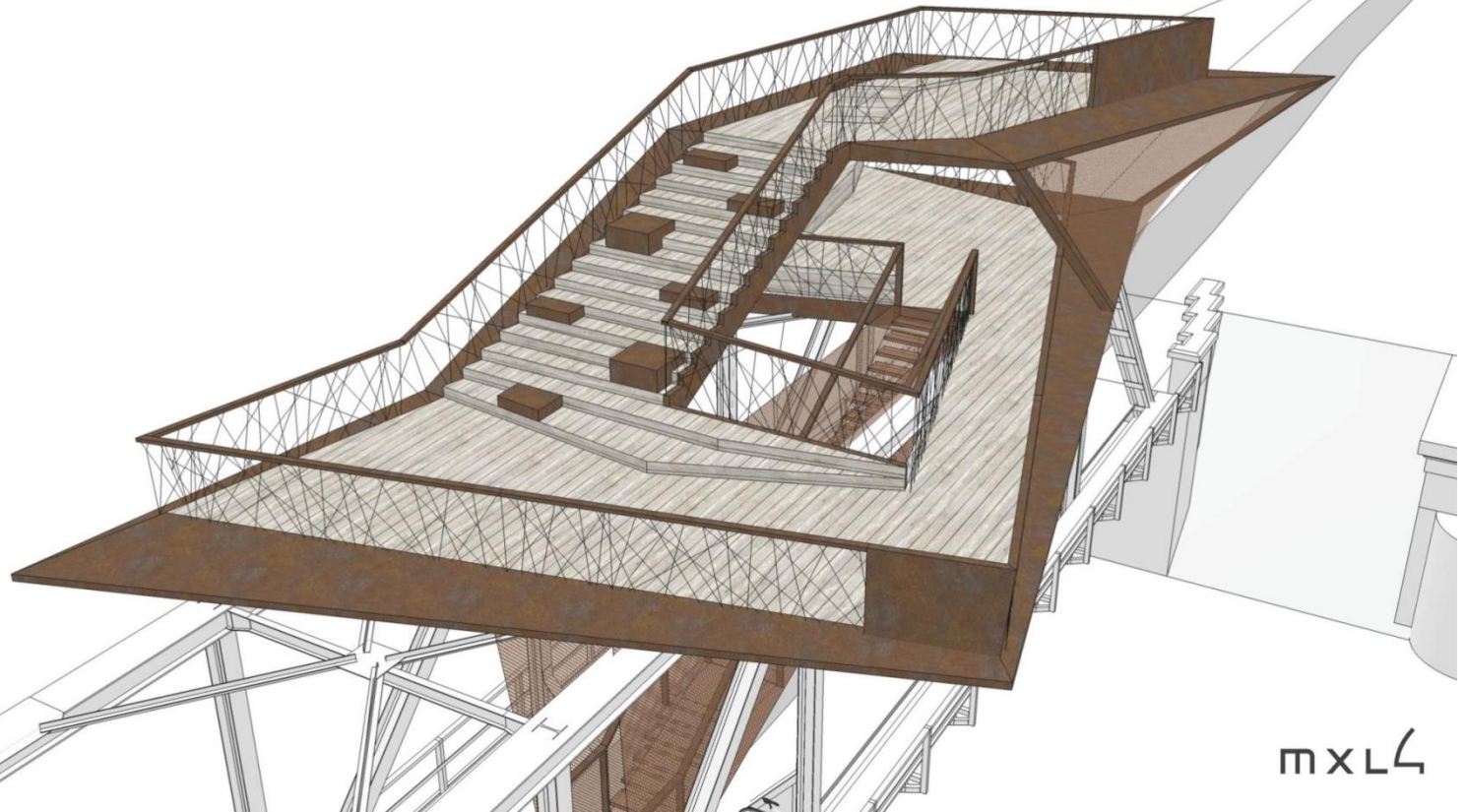
Baujahre	1920	1908	1920	1908	1910	1939	1930	1930	1930	1930	1930	1930	1930	1930	1930				
Überbauten	01	02	03	04	05	06	07	08	09	10	11	12	13	14	15	16			
Unterbauten	01	02	03	04	05	06	07	08	09	10	11	12	13	14	15	16	17	18	
Auflager	Lose	Lose	Lose	Lose	Fest	Lose	Lose	Lose	Lose	Lose	Lose	Fest	Lose	Lose	Lose	Lose	Lose	Lose	
Gründung	SCH	SEN	PFA	SEN	SEN	SEN	SEN	SCH	SCH	SEN	SEN	SEN	SEN	SEN	SEN	SEN	SEN	SCH	
Unterbauten Bogenbrücke	19	20	21	22	23	24	25	26	27	28	29	30	31	32	33	34	35		
Material	ST 37	ST 37	ST 52	PEGEL	ST 52	ST 37	ST 37	ST 37	ST 37	ST 37	ST 37	ST 37	ST 37	ST 37	ST 37	ST 37	ST 37	ST 37	
Gewichte	75 t	118 t	700 t	300 t	96 t	96 t	96 t	96 t	96 t	96 t	96 t	96 t	96 t	96 t	96 t	96 t	96 t	96 t	
Höhen	6,70	6,10	12,00	9,00	6,70	6,70	6,70	6,70	6,70	6,70	6,70	6,70	6,70	6,70	6,70	6,70	6,70	6,70	Achsmaße
Breiten	5,00	5,50	6,20	5,20	5,00	5,00	5,00	5,00	5,00	5,00	5,00	5,00	5,00	5,00	5,00	5,00	5,00	5,00	Achsmaße
Teilmaße	36,50	35,40	91,00	62,70	36,50	36,50	36,50	113,00	36,50	36,50	36,50	36,50	36,50	36,50	36,50	36,50	36,50	36,50	Achsmaße
Elementmaße			335,10					113,00						328,50					Achsmaße
Gesamtmaße								776,60											Achsmaße
	SA		SA				SA		SA									SA	Schlenkenausträge
Westufer Stromoder																			Ostufur Vorflut





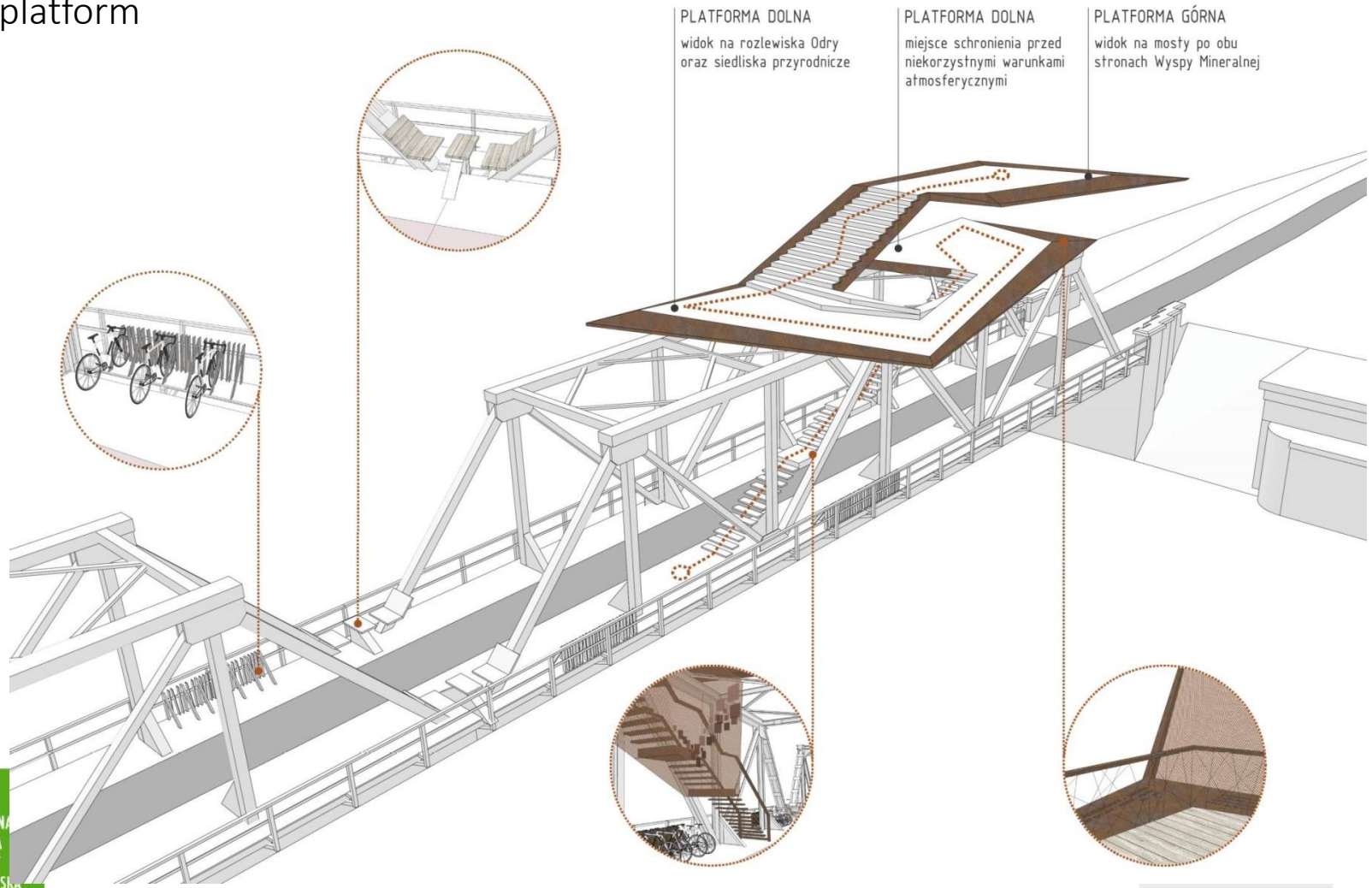


Viewing platform





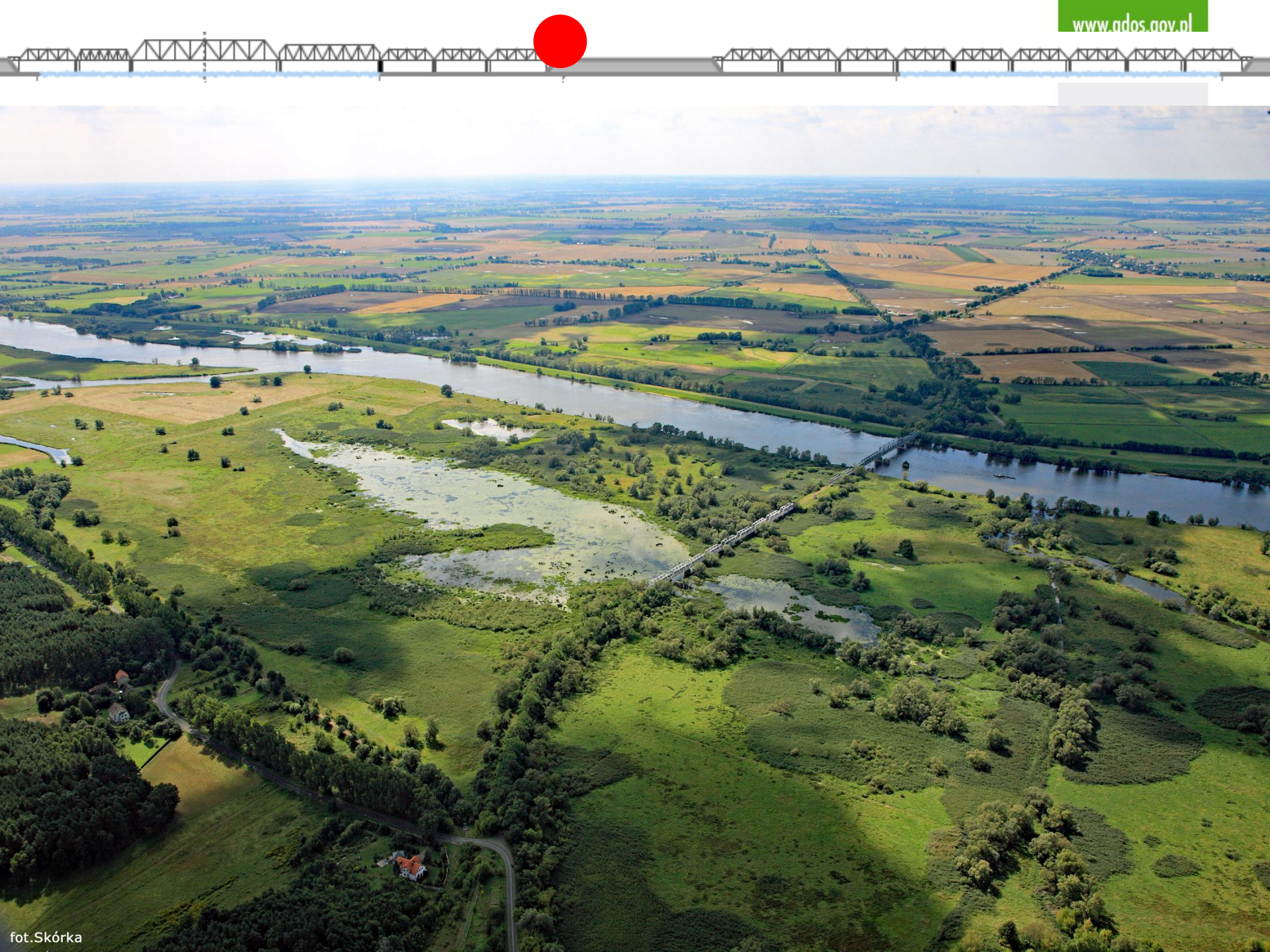
Viewing platform



PLATFORMA DOLNA
widok na rozlewiska Odry
oraz siedliska przyrodnicze

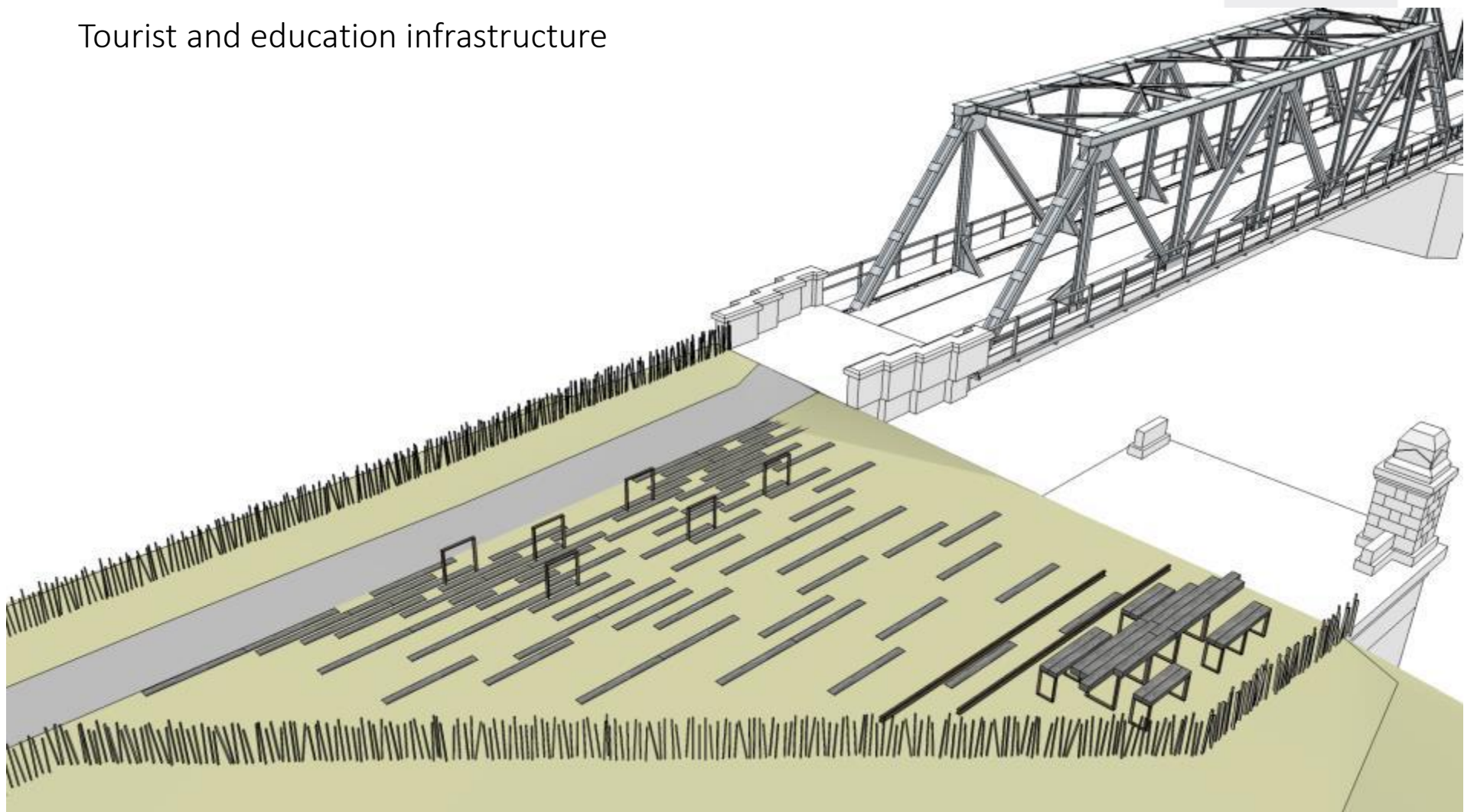
PLATFORMA DOLNA
miejsce schronienia przed
niekorzystnymi warunkami
atmosferycznymi

PLATFORMA GÓRNA
widok na mosty po obu
stronach Wyspy Mineralnej





Tourist and education infrastructure





Symbolic common leisure and recreation space



The expected results of the project

- the bridge will act as transborder pedestrian and cycle path;
- the bridge will fill the gap in the communication system - enabling more frequent crossing of the Odra River in both directions;
- the bridge will be a part of systemic cycle routes of the West Pomeranian Voivodeship;
- it will combine the newly-developed Trasa Pojezierna (Lake Route) with the system of German and international cycle routes;
- it will encourage local tourism in the German and Polish communities.

Concept of bicycle routes of the West Pomeranian Voivodeship



German bicycle route Szczecin - Berlin



Water landscape in Poland



Photo by Piotr Chara

Adaptation of the European Siekierki – Neurüdnitz bridge for tourism purposes

This presentation was prepared using materials and photos provided, thanks to and courtesy of the Landscape Parks Complex of the West Pomeranian Voivodeship

