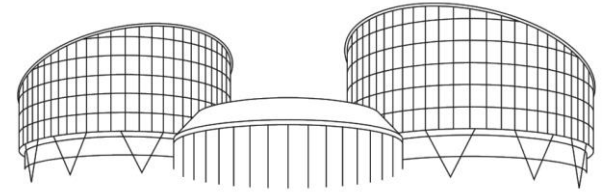


COUNCIL OF EUROPE



CONSEIL DE L'EUROPE



EUROPEAN COURT OF HUMAN RIGHTS

COUR EUROPÉENNE DES DROITS DE L'HOMME

Enhancing Subsidiarity: Support to the ECHR Knowledge-sharing and Superior Courts Dialogue

Component three:

Embedding the ECHR into national legal systems

BRANT – Basic Rights Application and Navigation Toolbox

Main areas of intervention the third component (BRANT):

Promoting the use of the KS and other ECHR tools among the judiciary

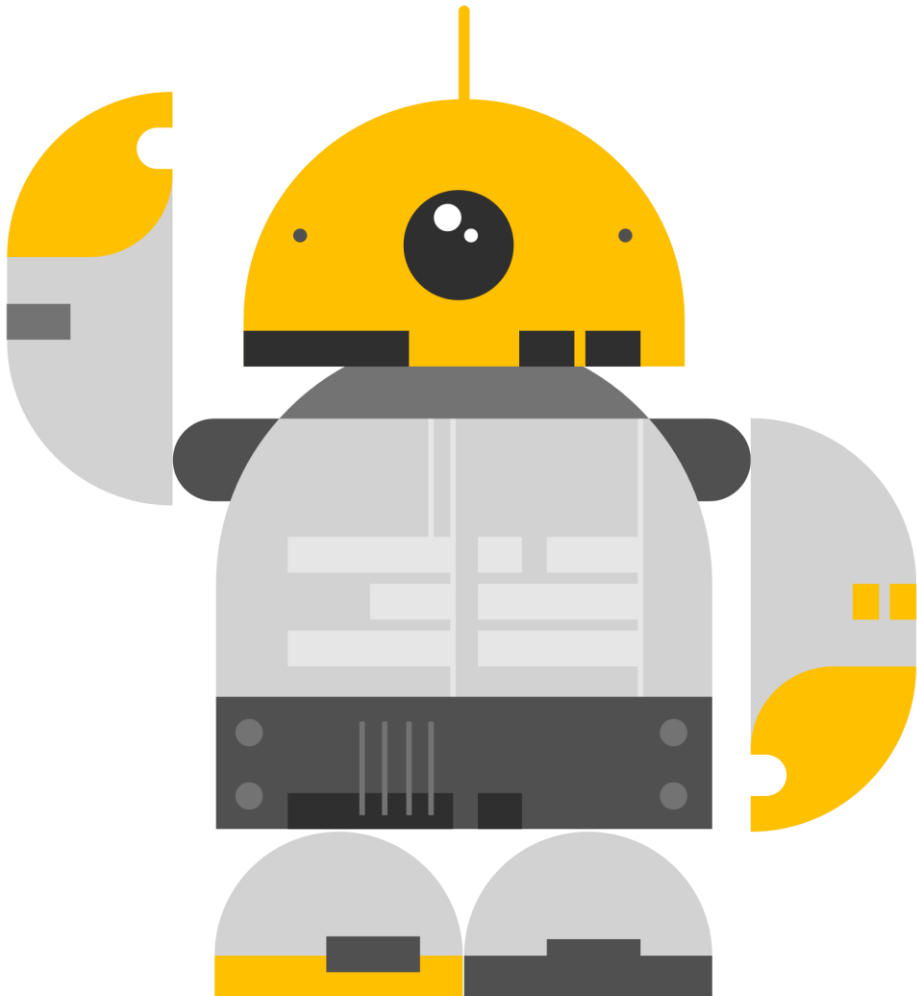
Advising on existing processes to better identify, recognise and address Convention-related issues

Improving the existing or creating new instruments for linking/associating national systems with the ECHR emerging case law and KS



Enhancing Subsidiarity: Support to the ECHR Knowledge-sharing and Superior Courts Dialogue

Promoting the use of the KS and other ECHR tools among the judiciary

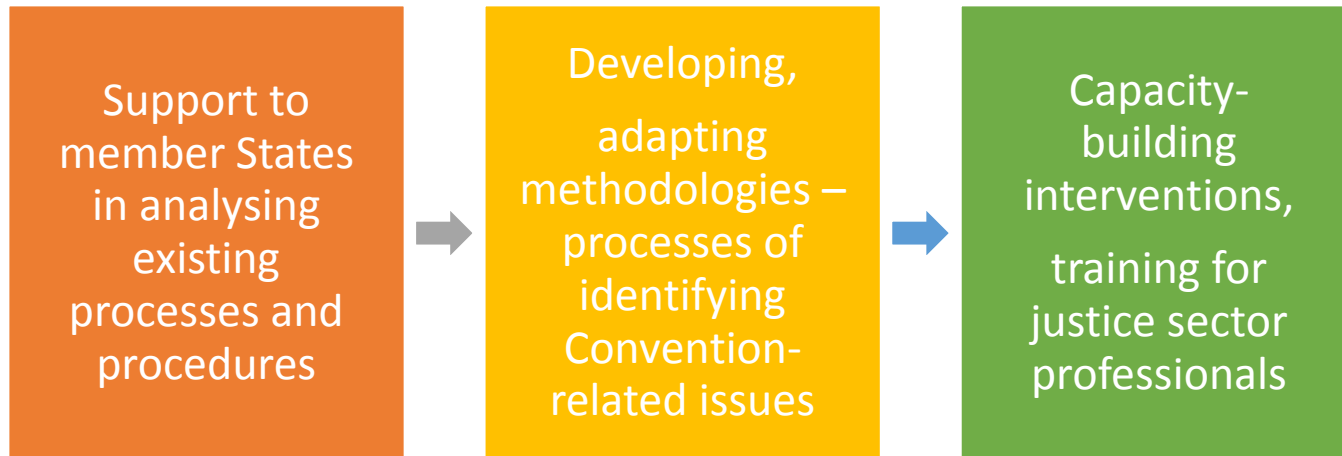


Awareness raising – discussions, presentations, promotional materials;


Translations of the KS into national languages – support with translation, advocacy measures to secure internal resources for maintaining the KS in national languages, support in setting up national translation work processes/workflows to ensure quality;

Internalising (in MS) the use of KS by building its use into national practices and institutional procedures – procedure reviews, training and capacity building, methodological advice and guidelines

Advising on existing processes to better identify, recognise and address Convention-related issues



Instruments for linking/associating national systems with the ECHR emerging case law and KS



Reviewing caselaw categorization/tagging/classification practices and tools in national case management tools

Building new IT instruments/adjusting national instruments to include HR categorization/tagging

Building IT instruments for linking/associating national systems to ECHR KS and other ECHR systems

Building analytical tools (including IT) to identify systemic Human Rights issues

THANK YOU!