



# Good morning

Photos - **Forêt de Soignes** by Frédéric Demeuse



**LIFE Natur'Adapt Update**

# Climate Change Adaptation & Protected Areas

Olivier de Sadeleer, Project Manager, EUROPARC

23 May 2022

# Who is EUROPARC?



- A representative **federation** (NGO) **of Protected Areas** across Europe (approx. 400 members in 40 countries)
- Promotes **international collaboration** through nature conservation
- Working on **capacity building and networking**



LIFE  
**NATUR'**  
**ADAPT**

More info on [www.naturadapt.com](http://www.naturadapt.com)

LIFE NaturAdapt is a 5-year project developed with the enthusiastic support of...



**MINISTÈRE  
DE LA TRANSITION  
ÉCOLOGIQUE**

*Liberté  
Égalité  
Fraternité*

# LIFE Natur'Adapt is ...



- An **experiment** that aims at **integrating climate change** into protected area management practices



# LIFE Natur'Adapt is ...



- An **experiment** that aims at **integrating climate change** into protected area management practices
- is the foundation of **a dynamic collective learning process.**





# Concretely, we talk about...



- **CC methodology for Protected Area managers**





# Concretely, we talk about...

- **CC Methodology for Protected Area managers**
  - Climate change scenarii
  - Vulnerability assessments
  - Adaptation measures

# Concretely, we talk about...

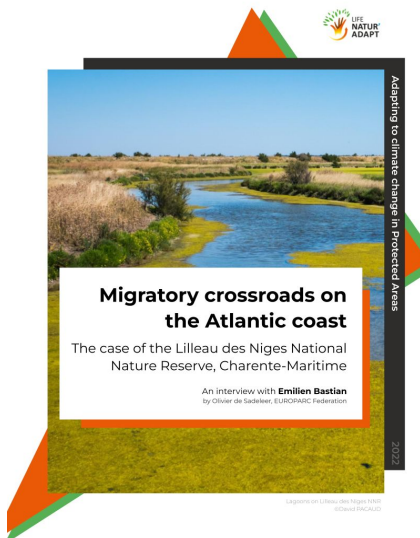
- CC Methodology for Protected Area managers
  - Climate change scenarii
  - Vulnerability assessments
  - Adaptation measures
- **Collaborative community & platform**
- **Online courses**

# Concretely, we talk about...

- CC Methodology for Protected Area managers
  - Climate change scenarii
  - Vulnerability assessments
  - Adaptation measures
- Collaborative community & platform
- Online courses
- **Policy and public engagement work**

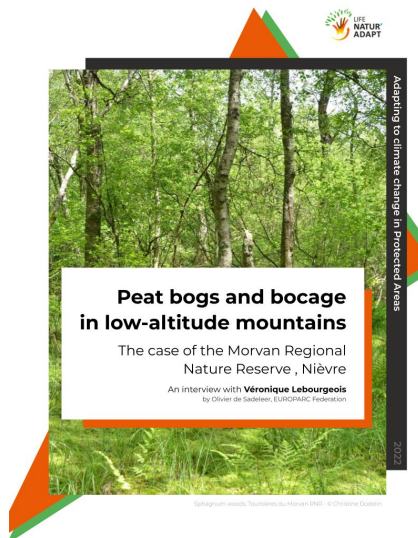
# Let's learn from experience ...

6 experiments available for *downloads* >>



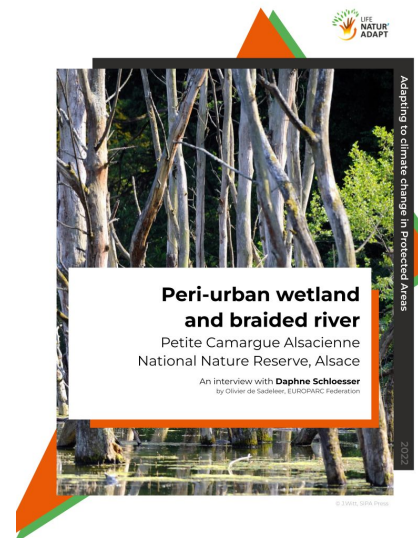
FR

EN



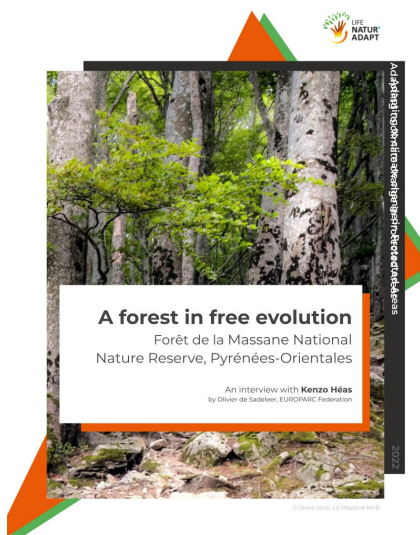
FR

EN



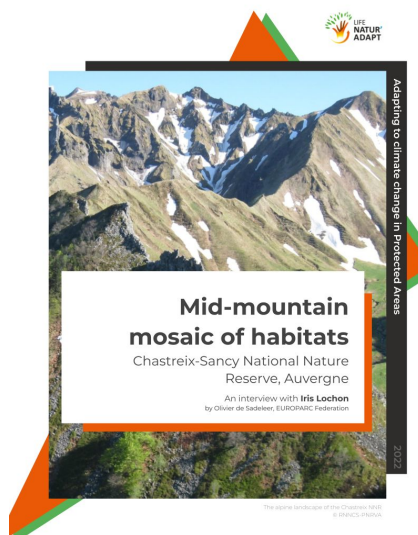
FR

EN



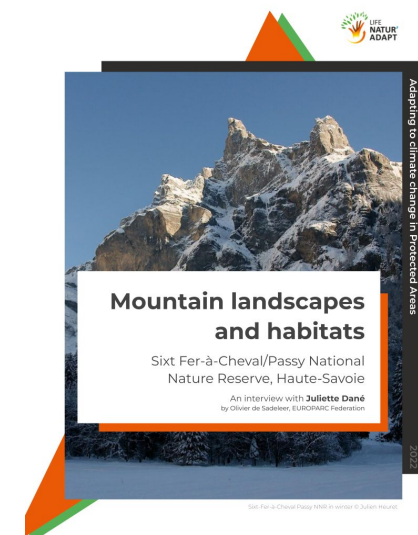
FR

EN



FR

EN



FR

EN



A close-up photograph of two damselflies on a bright yellow reed stem. The damselflies are positioned vertically, one above the other, with their long, segmented bodies and transparent wings clearly visible. The background is a clear, bright blue sky. To the left of the yellow stem are several green reed stems, and to the right is a brown, pointed reed structure. The overall scene is a natural, outdoor setting.

# **Key learnings**

**from LIFE Natur'Adapt's  
experimentation**

Photos - Petite Camargue Alsacienne

## Key learnings on integrating Climate Change Adaptation in PA Management practice

1. You have to **accept to deal with uncertainties** related to climate models and the effects of CC
2. It is critical to understand how climate change will affect the protected areas, nature and communities
3. It's an **iterative and forward-looking process** :  
Imagine tomorrow to decide today!
4. **Get started.** The manager's "**journey**" is as important as the adaptation plan itself.

## Key learnings on integrating Climate Change Adaptation in PA Management practice

1. You have to **accept to deal with uncertainties** related to climate models and the effects of CC
2. It is critical to **understand how climate change** *might* affect the protected areas, nature and communities
3. It's an **iterative and forward-looking process** :  
Imagine tomorrow to decide today!
4. **Get started.** The manager's "**journey**" is as important as the adaptation plan itself.



## Key learnings on integrating Climate Change Adaptation in PA Management practice

1. You have to **accept to deal with uncertainties** related to climate models and the effects of CC
2. It is critical to **understand how climate change** will affect the protected areas, nature and communities
3. It's an **iterative and forward-looking process** :  
Imagine tomorrow to decide today!
4. **Get started.** The manager's "**journey**" is as important as the adaptation plan itself.

## Key learnings on integrating Climate Change Adaptation in PA Management practice

1. You have to **accept to deal with uncertainties** related to climate models and the effects of CC
2. It is critical to **understand how climate change** will affect the protected areas, nature and communities
3. It's an **iterative and forward-looking process** :  
Imagine tomorrow to decide today!
4. **Get started.** The manager's "**journey**" is as important as the adaptation plan itself.



# **Ideas to keep in mind**

These ideas are the result of the work  
of the EUOPARC Task Force on Climate Change

# Ideas to keep in mind

It is critical to **enable the co-design of balanced and coordinated environment management plans** across all sectors & governance levels

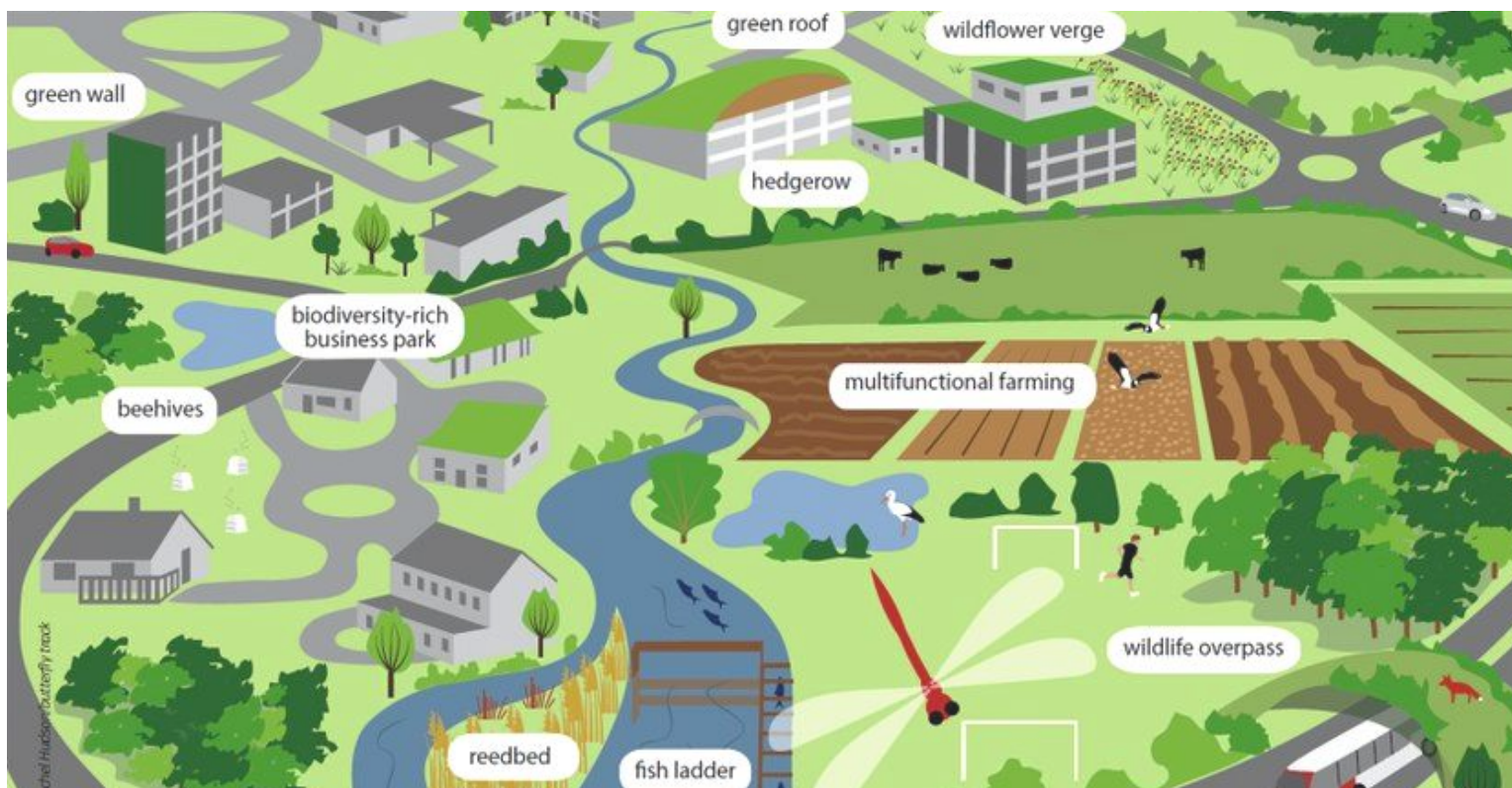
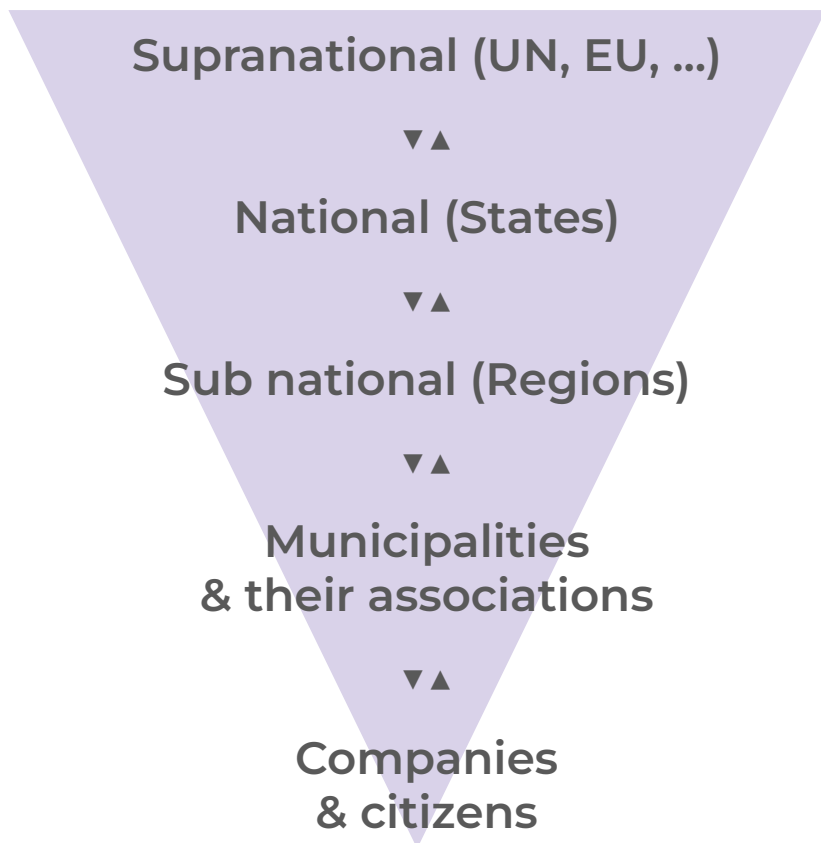


Image source: Interfase Research Group (coastal resources, territory and landscape) at the UAB, Barcelona

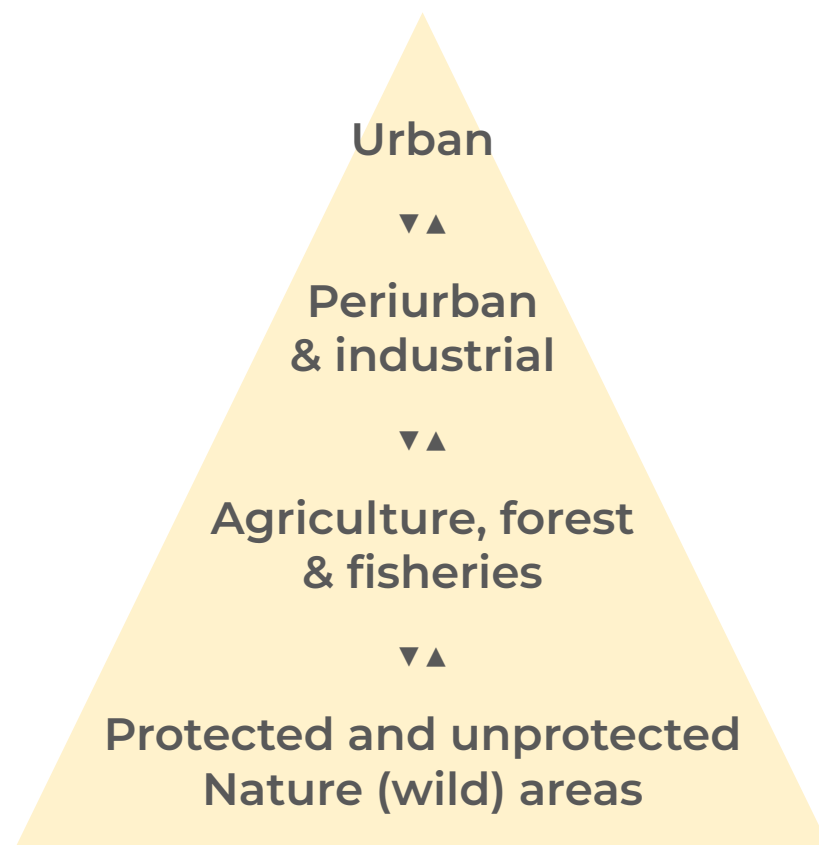
# It is critical to:

Work towards **concrete integration and implementation of policies across sectors and governance levels** (geopolitical scales)

## Across governance levels



## Across land uses





It will be beneficial to:



## **Work with Nature Protected Areas to :**

- a. Assess climate change vulnerability for both nature and human societies at multiple geopolitical scales

It will be beneficial to:



## **Work with Nature Protected Areas to :**

- b. co-design integrated, long-term and large-scale environment management and spatial planning that support climate change adaptation for the benefit of nature and dependent societies.





**SAVE THE DATE !**



**2022**

**EUROPARC Conference**  
**Climate Change; Resilient Parks**

4-7 October, Argelès-sur-Mer, France 

# Resources already available



Discover the Resource Center on  
Climate Change Adaptation  
in Protected Areas here:

**French**>>



**English** >>



If you have any questions, or  
if you want to get involved,  
please **contact us**:

**Olivier de Sadeleer**

Project Manager - LIFE

Natur'Adapt

Climate Change Adaptation

EUROPARC Federation

[olivier.desadeleer@europarc.org](mailto:olivier.desadeleer@europarc.org)

[www.europarc.org](http://www.europarc.org)



A photograph of two woodpeckers on a mossy tree trunk in a forest. The woodpeckers have black and white plumage with a distinctive red cap. They are perched on a thick, moss-covered branch. The background is a soft-focus forest with green foliage. The text "Have a great day :)" is overlaid in the center of the image.

**Have a great day :)**