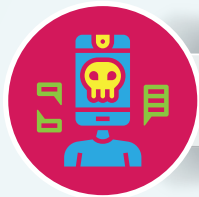
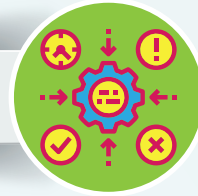




# Advanced guide to analysing a case of hate speech

Targets a potentially vulnerable group?  
 Targeted group are victims of discrimination/violence?  
 Negative stereotypes of targeted group?  
 Speech connected to negative stereotypes?  
 Political representation of targeted group?  
 Extent of support to targeted group?

## CONTEXT



## SPEAKER

Status of the speaker?  
 Capacity in which speech was made?  
 Influence of speaker on audience?  
 Credibility of the speaker?  
 Influence of speaker on targeted group?

Past actions of the speaker?  
 Reaction of the speaker?  
 Probable objectives of the speaker?  
 Intended audience?

## ASSUMED INTENT



## CONTENT AND FORM



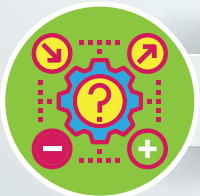
How provocative/aggressive is the speech?  
 Form of the speech?  
 How direct was the hate?  
 Was it a call to action?  
 Linked to other dominate hate narratives?  
 Legal status of the hate speech?

Public or private speech?  
 How was it disseminated?  
 How often was it disseminated?  
 Quantity of disseminated materials?  
 Accessibility of the hate speech?  
 Extent of audience reached?

## REACH OF THE SPEECH



## LIKELIHOOD OF ACTION



Effects produced?  
 Audience has the means to act?  
 Probability of audience acting on the hate speech?

[www.coe.int/human-rights-speech/analyse](http://www.coe.int/human-rights-speech/analyse)



Co-funded by the European Union



Co-funded and implemented by the Council of Europe