



RISE CRIMINAL SANCTIONS AGENCY



RISE

CRIMINAL SANCTIONS AGENCY

Esa Vesterbacka, Director General, Finnish Prison and Probation Service

Vision

The Criminal Sanctions Agency carries out influential, reliable and significant work for the safety of society.

Main goals

“Path to a life without crime with the help of an active network co-operation”

The content of sentence enforcement and the co-operation with other authorities and third sector operators as well as the close people of the sentenced offender increase the sentenced offender’s abilities to reintegrate into society.

“Safely towards more open and influential enforcement“

Flexible and secure structures and sanction processes enable and support more open and influential enforcement.

“Meaningful work, motivated and healthy personnel”

The Criminal Sanctions Agency is a reliable and respected organisation where skilled and motivated personnel carry out meaningful work.

Basic duty

The Criminal Sanctions Agency is responsible for the implementation of remand imprisonment as well as the enforcement of community sanctions and prison sentences.

Values

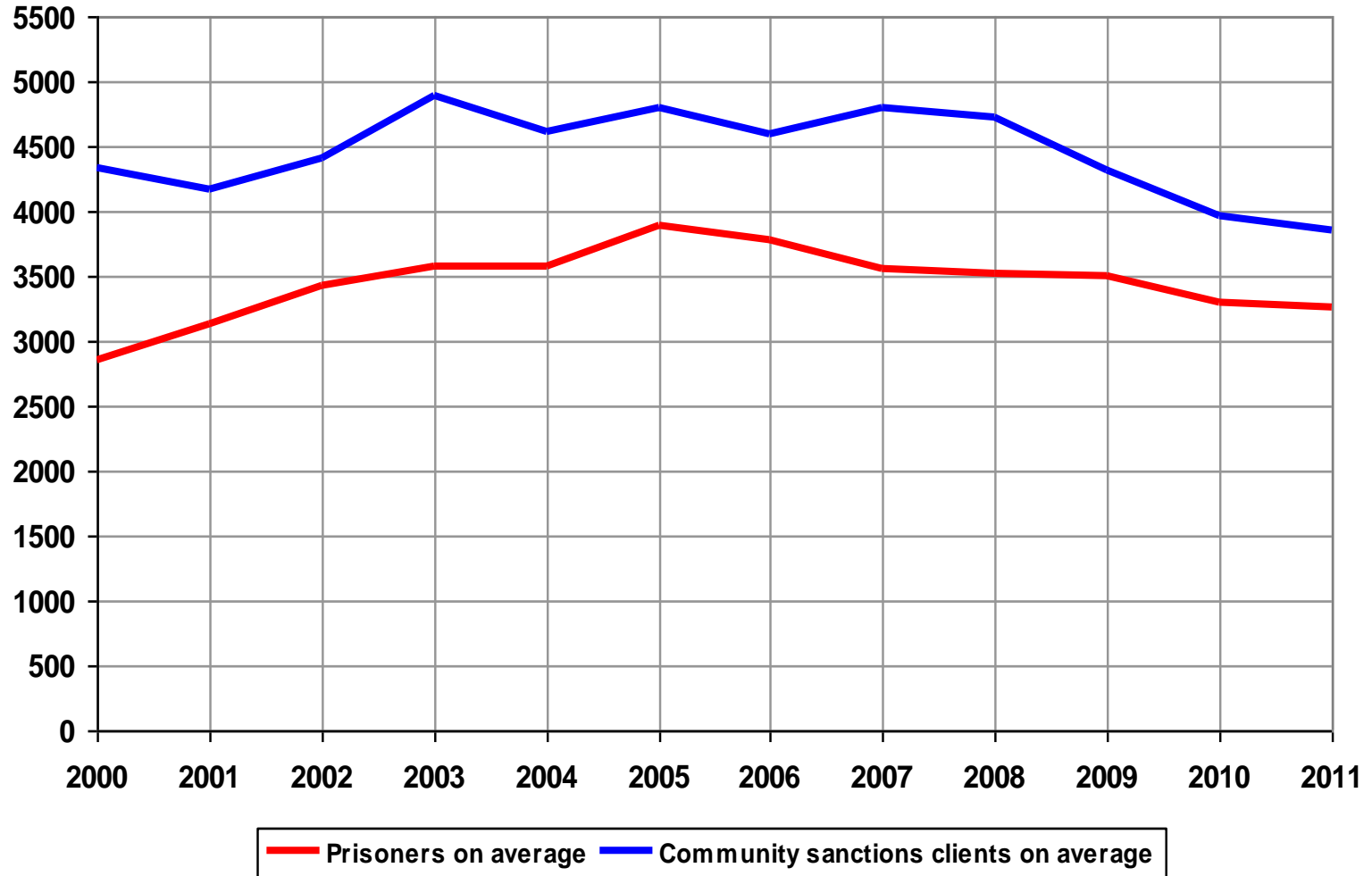
Respect for human dignity

Justness

Belief in an individual’s potential to change and grow

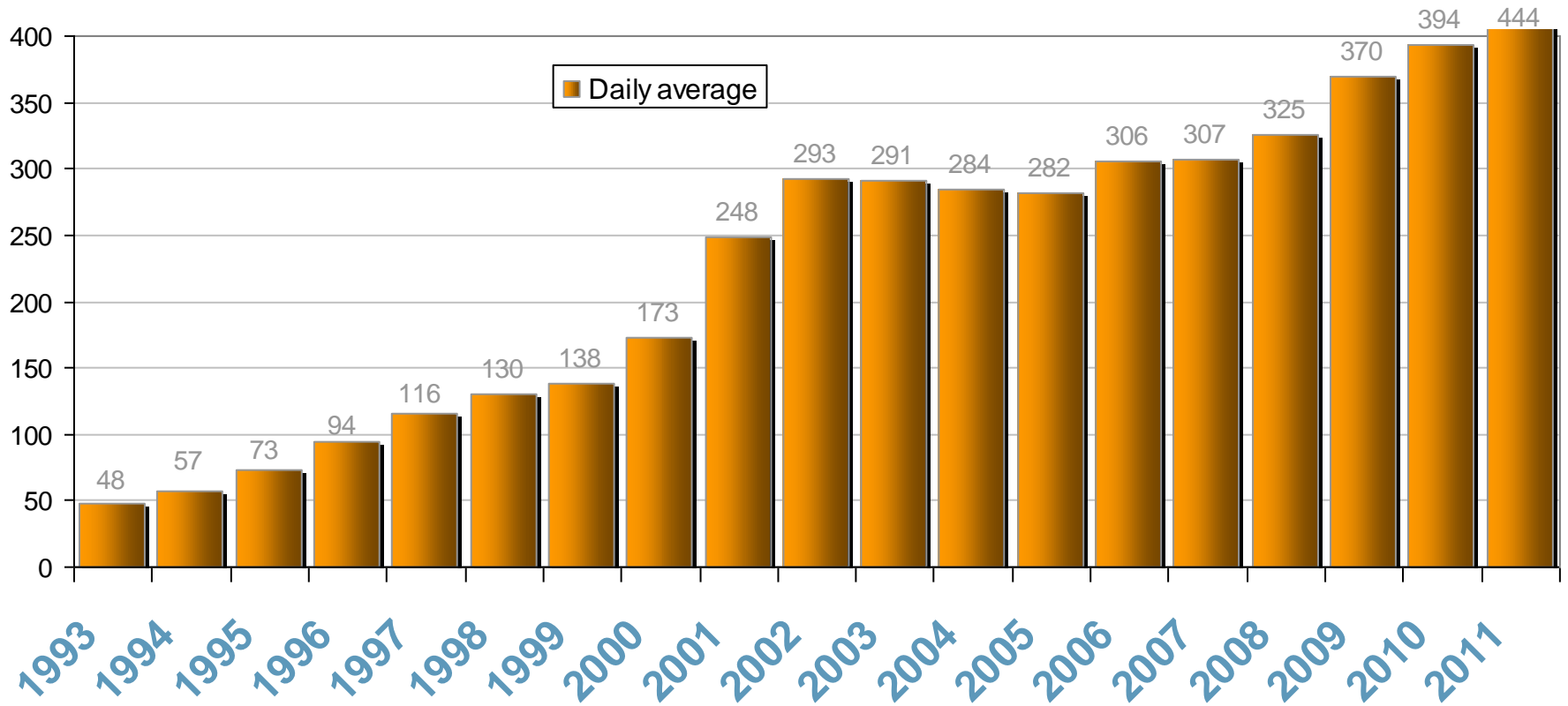
Safety

Prisoners and community sanctions clients on average in 2000 - 2011





Foreign prisoners in 1993-2011





Allocation

- As the enforcement of a sentence begins, the prisoner is assessed and, based on that, prepared a sentence plan and placed in prison.
- Factors concerning specifically foreign prisoners:
 - It has to be taken into account whether the prisoner is subject to an effective or a pending decision on expulsion/refusal of entry or has permanent residence in Finland
 - Prisoner's language skills and cultural background have to be taken into account during the assessment
 - Assessment process may take longer than normal (interpretation or preparing an assessment in a foreign language)
 - Prisoner's language skills have to be taken into account in the preparation of the sentence plan because participation in rehabilitation programmes or in education with an interpreter is not always possible





Allocation

- Goals of the sentence plan should be such that they can be realised despite language problems (e.g. Finnish language education if the sentence is short and the prisoner is subject to an effective expulsion decision)
- Prisoner's ties in Finland have to be taken in to account when considering a placement in an open prison (family, other relatives)
- When planning supervised probationary freedom, it has to be considered whether the integration into Finnish society is practical if the prisoner is subject to a decision on expulsion/refusal of entry





Adaption and regime

- When prisoners arrive in prison, they will be taken to the prison's reception where they are also given information on the prison. The most important tool is the prisoners' information book in which the prison conditions as well as the rights and obligations of prisoners are described comprehensively. Each prisoner receives it. The information book is available in languages that are used most among the prisoners. Translations are made when needed.
 - During the reception, an accommodation ward is selected for the prisoners. The prisoners are heard on the matter. The aim is to place foreign prisoners in the same cells or wards together with their fellow citizens – or other foreign prisoners who are culturally close.
 - Remand prisoners, who have court-ordered restrictions related to the investigation, are in the most difficult situation. They have to be accommodated alone and separate from others.
 - At the accommodation ward, the prisoners are told the daily schedule of the ward.
-



Adaption and regime

- Many foreign prisoners have various dietary requests related to their religion or culture. Over the years, the prison kitchen has got used to them and is able to meet the requests. The prisoners can get additions to their diet from the prison canteen. Foreign remand prisoners without money can be granted an expense allowance on application.
- The religious needs of foreign prisoners are met as far as possible. On request, the prison arranges the prisoners to meet a representative of their own religion.
- Unfortunately racism, discrimination and even violence occur among prisoners. The aim is to prevent such incidents with the help of the placements in the wards. The staff always intervenes in bullying and violence. There can also be mutual hostility among foreign prisoners.





Adaption and regime

- The most challenging are those foreign prisoners who do not have any common language with the staff. The aim is to place such prisoners in the same cell with some other prisoner who speaks the same language. In such cases, the prisoners handle their practical affairs with the help of their cellmate. Outside interpreters are used in important official decisions. The health care has to also use interpreters at times.
- Legal aid attorneys bring interpreters with them if required when they visit prisoners in prison. These interpreters are also used by the staff when they deal with important or urgent matters with the prisoners.
- The level of participation in activities is significantly lower among foreign prisoners than among Finnish prisoners.



