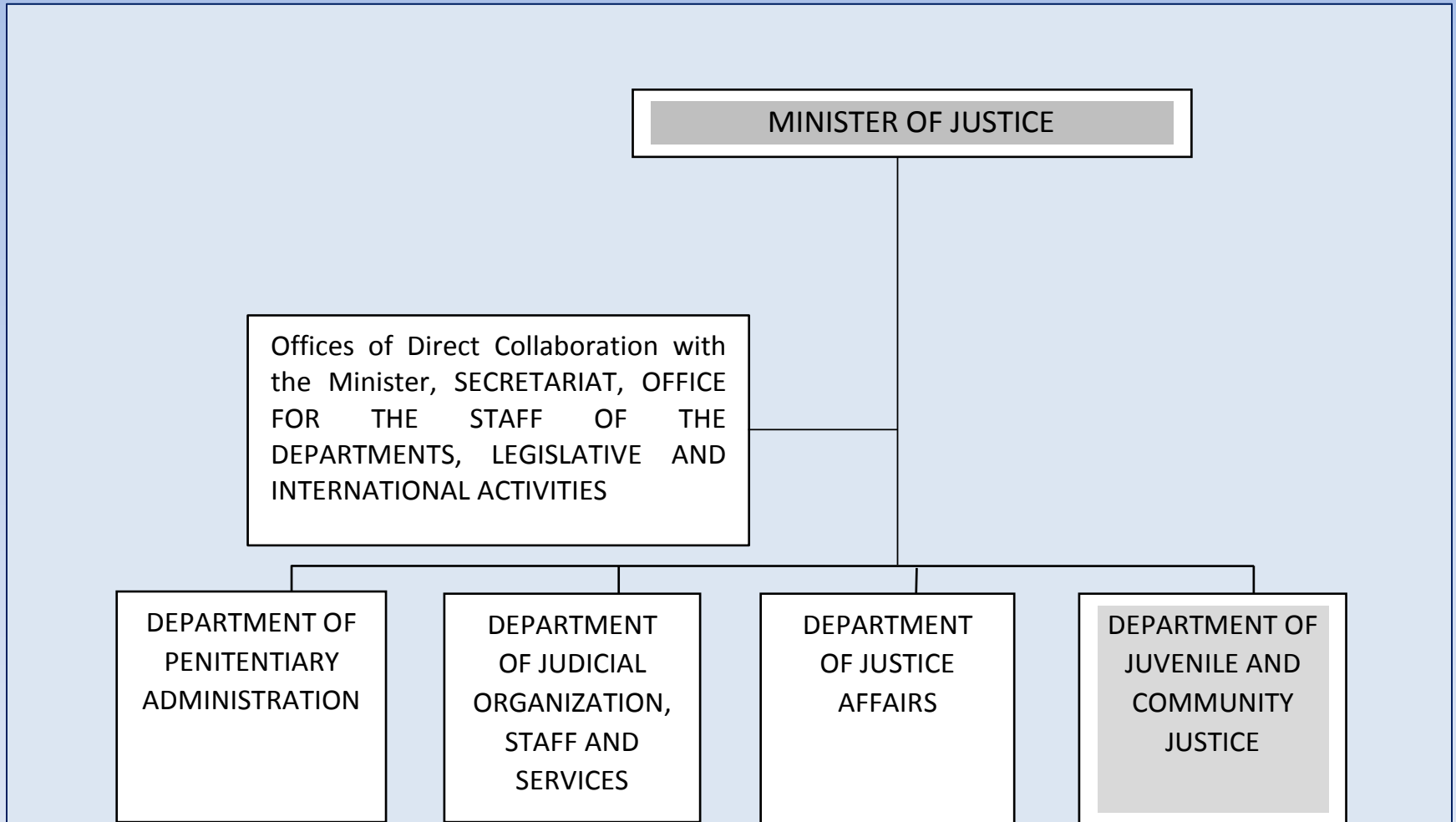
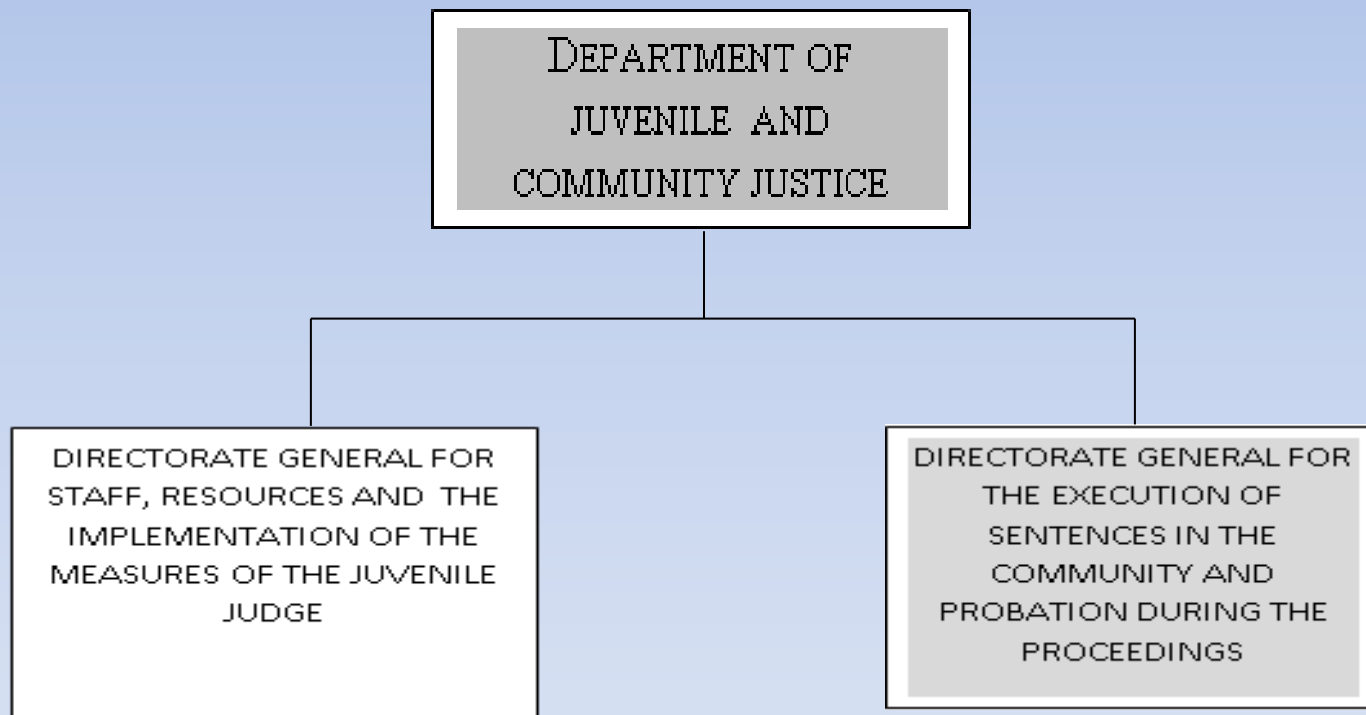


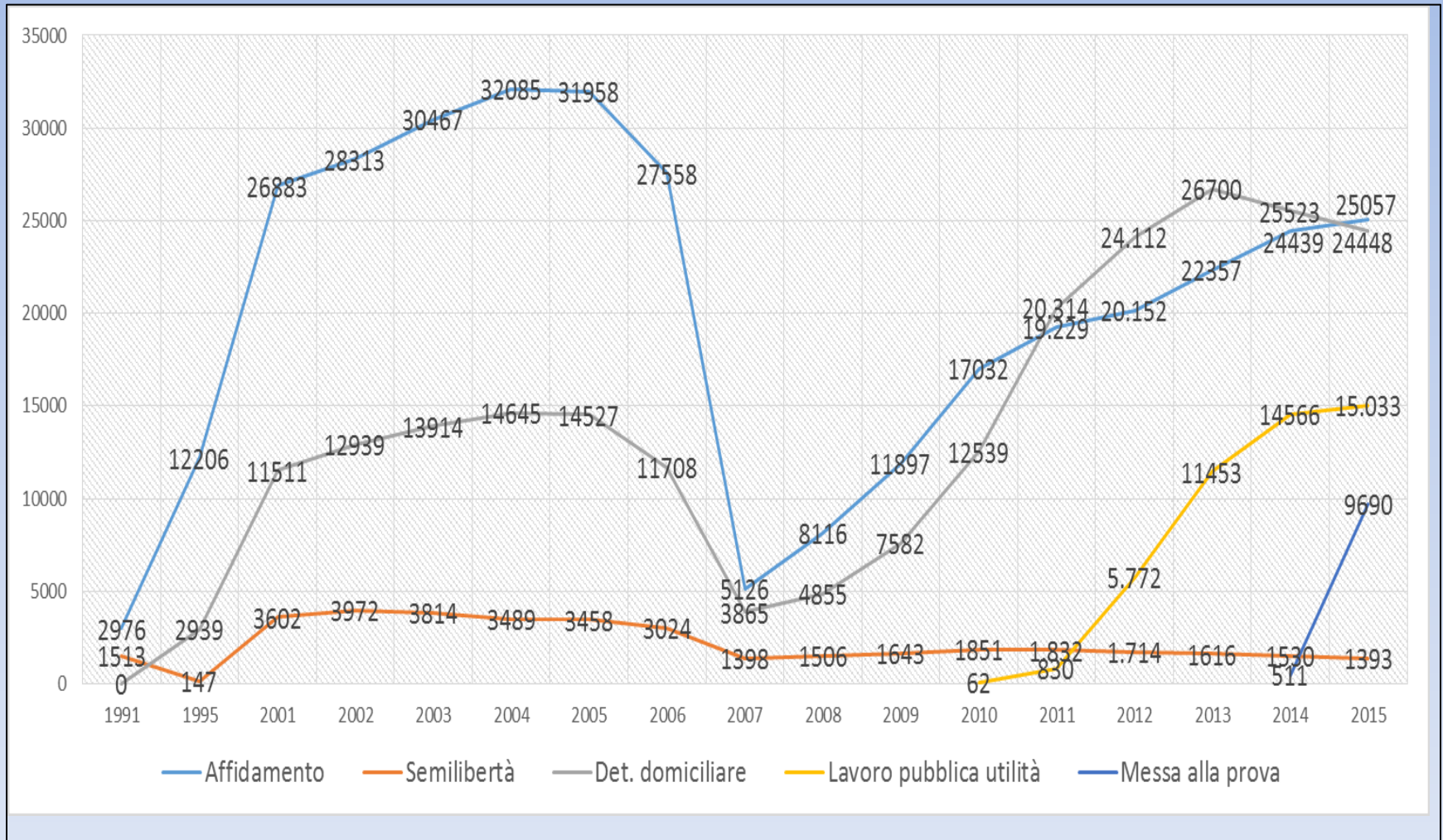
ORGANIZATIONAL CHART OF THE MINISTRY OF JUSTICE



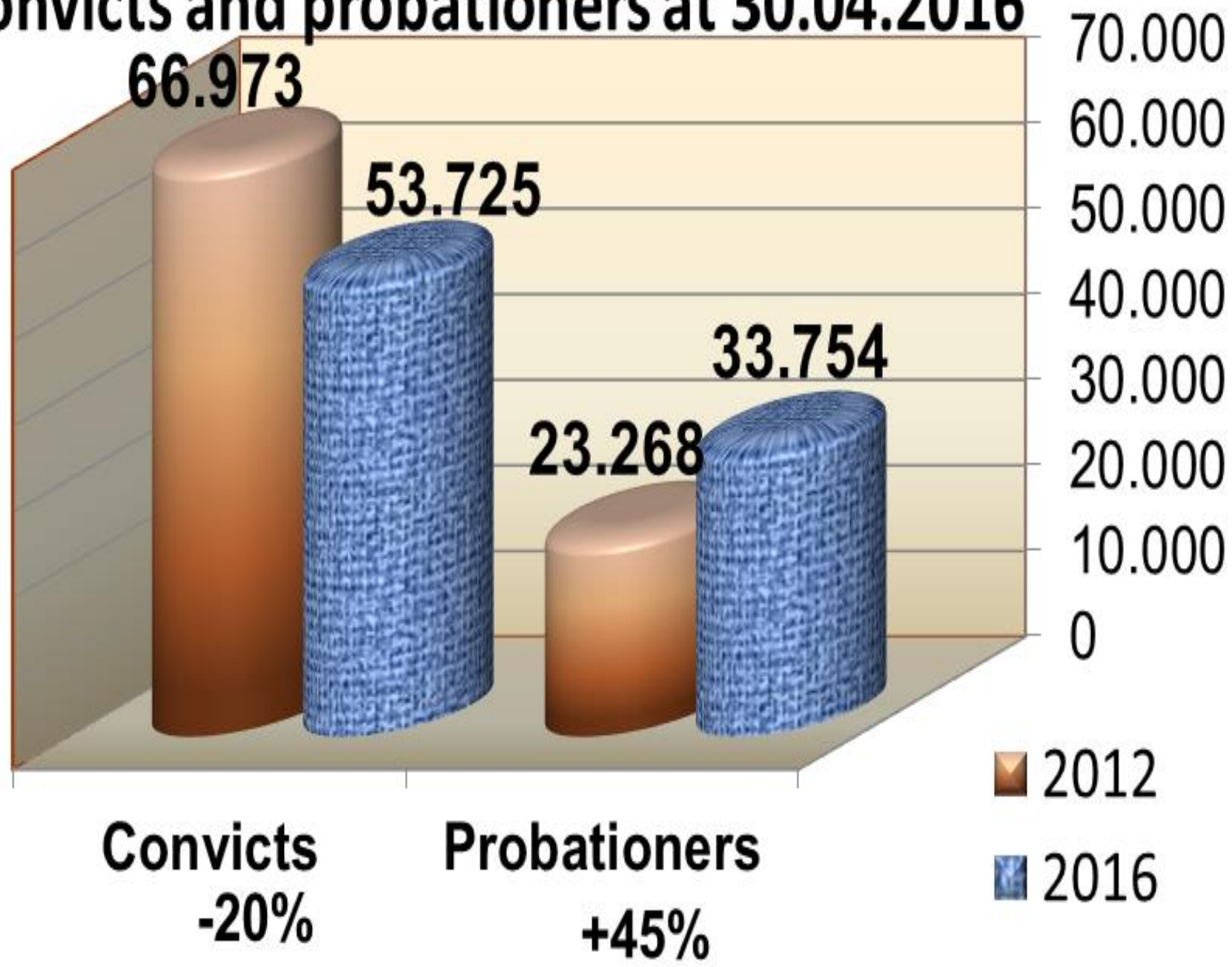
ORGANIZATIONAL CHART OF THE DEPARTMENT OF JUVENILE AND COMMUNITY JUSTICE



TREND IN THE NUMBER OF PERSONS UNDER COMMUNITY MEASURES AND SANCTIONS FROM 1991 TO 2015



Convicts and probationers at 30.04.2016



COMMUNITY SANCTIONS AND MEASURES AT 15/05/2016

