

Ministry of Environmental  
Protection and Regional  
Development  
Republic of Latvia

# **Establishment of Natura 2000 network: Latvian experience**

Ilona Mendziņa  
Deputy Director  
Nature protection department

Minsk, October 4, 2016



Ministry of Environmental  
Protection and Regional  
Development  
Republic of Latvia

# Legal background

Birds directive - areas important for birds at any stage of their life (breeding, wintering, migration, etc.)

Habitats directive – species other than birds and habitats of EU importance



Ministry of Environmental  
Protection and Regional  
Development  
Republic of Latvia

# Point of departure

Existing network or specially protected nature territories – 243 sites

Coverage 6.8-8.8%

Red Data book – 118 animal and 112 plant species

Deadline - all Natura 2000 to be designated till the official entry into EU (May 1, 2004)

Main question - correlation between legal requirements and existing situation



Ministry of Environmental  
Protection and Regional  
Development  
Republic of Latvia

# Phase I

## Species and Habitats project

1999-2000

Supported by DANCEE

Evaluation of the legal requirements set by  
directives

Transposition of the directives into national  
law



Ministry of Environmental  
Protection and Regional  
Development  
Republic of Latvia

# Phase I

## Species and Habitats project

### Outcomes I

#### Law on species and habitats protection

- Regulation on specially protected species and species of limited exploitation
- Regulation listing the protected habitats
- Regulation on establishment, protection and management of microreserves
- Compensation for the destruction of habitats and protected species
- Regulation on recompense to land owners for the damage caused by specially protected and migratory species
- Regulation on introduction and reintroduction on non-native species

Amendments to Hunting law and regulations,  
Law on protected territories, etc.



Ministry of Environmental  
Protection and Regional  
Development  
Republic of Latvia

# Phase I Species and Habitats project Outcomes II

|                         | Listed | Present | Natura 2000 |
|-------------------------|--------|---------|-------------|
| Habitats                | 229    | 60      | 56          |
| Mammals                 | 53     | 29      | 5           |
| Amphibians,<br>reptiles | 51     | 14      | 3           |
| Plants                  | 566    | 22      | 20          |
| Invertebrates           | 136    | 34      | 22          |
| Fish                    | 65     | 13      | 10          |
| Birds                   | 500    | 261     | 70          |



Ministry of Environmental  
Protection and Regional  
Development  
Republic of Latvia

## **Phase II Emerald/ Natura 2000 project**

Main tasks:

- Analysis of existing situation
- Inventory of existing protected areas (terrestrial)
- Analysis of suitability of existing protected areas for the protection of species and habitats of EU importance
- Filling the gaps for Natura 2000 designation
- Establishment of Natura 2000 data base
- Capacity building (governmental institutions, NGOs, experts)
- Communication and information activities



Ministry of Environmental  
Protection and Regional  
Development  
Republic of Latvia

# Phase II Emerald/ Natura 2000 project

2001-2003

Supported by Dancee

Total budget 6,87 million DKK (96% DK, 4%  
LV)

7 expert groups

85 experts

3 field seasons

Involved institutions: Latvian Fund for  
Nature, Latvian Ornithological Society,  
University of Latvia, Latvian data agency,  
Regional Environmental Boards, State  
Environmental Service, State Forestry Service





Ministry of Environmental  
Protection and Regional  
Development  
Republic of Latvia

# Phase II Emerald/ Natura 2000 project

## Analysis of existing situation

- There is no information on 80 protected territories
- Sufficient biological information on few of existing protected territories

Priorities for further investigation – the less we know the higher priority + focus on EU nature values (Natura 2000 triggering species and habitats)

=> 1431 inventories, 6890 man-hours 😊



Ministry of Environmental  
Protection and Regional  
Development  
Republic of Latvia

## **Phase II Emerald/ Natura 2000 project**

Recording presence / absence

Assessment of size of population - not  
always

Site field surveys forms filled for each visit

Later analyzed by systematic group  
coordinators

20-60% rule applied or population size / IBAs

Amendment of existing protected areas  
(borders, areas)

Gaps revealed

Focused further investigation for gaps' closure

New sites proposed



Ministry of Environmental  
Protection and Regional  
Development  
Republic of Latvia

# Phase II Emerald/ Natura 2000 project

## Supplement 1. Application of IBA criteria in Latvia: a review in the context of the Natura 2000 project

### Part 1. Breeding birds

Abbreviations: unit - population measure unit, res. probl. - whether there is a research necessity in 2003, prot. probl. - whether more sites might be needed.

| species            | unit | num | notes                               | possible SPAs   | sites missing | res. probl | 2003 survey                            | prot. probl | notes                  |
|--------------------|------|-----|-------------------------------------|---|---------------|------------|--|-------------|------------------------|
| Gavia arctica      | SITE | 5   | best                                | Teici, KNP, Ziemeļu purvi, Klešniku purvs             |               | NO         | May be check other bogs with lakes     | NO          |                        |
| Podiceps auritus   | SITE | 5   | best                                | Engure, Idenu un Kvapanu dīki, Teici, Liepājas ezers  |               | YES        | Studies of appropriate sites from boat | NO?         | New sites can be found |
| Botaurus stellaris | PAIR | 15  | Not in conflict with B2 (1-5 sites) | Engure, KNP, Liepājas ezers, Papes ezers, Sedas purvs |               | NO         |  | NO          |                        |



Ministry of Environmental  
Protection and Regional  
Development  
Republic of Latvia

# Phase II Emerald/ Natura 2000 project

## Supplement 2. Assessment of what area of insufficiently protected habitats should be included in the system of SPNTs

NOTE: For habitats coloured in grey no data are available

| Code  | Habitat type                      | LVha* | SPNTha | SPNT% | EU%** | More needed |
|-------|-----------------------------------|-------|--------|-------|-------|-------------|
| 1110  | Sandbanks covered with water      | 12000 | 2143,8 | 18    | 20    | 240         |
| 1150* | Coastal lagoons                   | 22    | 21,6   | 98    | 100   |             |
| 1160  | Large shallow inlets and bays     | 300km | 58km   | 19    | 20    | 3           |
| 1170  | Reefs                             | 20    | 0      | 0     | 100   |             |
| 1210  | Ann. veget. of drift lines        | 14    | 7,7    | 55    | 60    | 0,6         |
| 1220  | Perennial veg. of stony banks     | 70    | 53,4   | 76    | 60    |             |
| 1230  | Veg. sea cliffs                   | 5     | 5      | 100   | 100   |             |
| 1310  | Sacicornia colon. mud and sand    | 7,5   | 4,3    | 57    | 60    | 0,23        |
| 1630* | Bor. Baltic coastal meadows       | 125   | 100,1  | 80    | 60    |             |
| 1640  | Bor. Baltic sandy beaches with... | 100   | 6,4    | 6     | 20    | 14          |
| 2110  | Embryot. shifting dunes           | 1000  | 176,1  | 18    | 20    | 20          |
| 2120  | White dunes                       | 1690  | 569,8  | 34    | 20    |             |
| 2130* | Grey dunes                        | 200   | 184,8  | 92    | 60    |             |
| 2140* | Fixed dunes with Empetrum ...     | 32    | 10,1   | 31    | 60    | 9,3         |



Ministry of Environmental  
Protection and Regional  
Development  
Republic of Latvia

# Point of landing

Emerald / Natura 2000 project proposed 122 new sites and 46 extensions of the existing sites, 112 824 ha

Other projects proposed 4 new sites, 104 191 ha

Final list of proposed Natura 2000 sites 336, 11,5%

Submitted to EC April 26, 2004





Ministry of Environmental  
Protection and Regional  
Development  
Republic of Latvia

## **Phase II Emerald/ Natura 2000 project Difficulties**

Shortage of time

Limited knowledge on ecology of certain  
species

Appropriate investigation methods

Designation of sites (legal protection)

Insufficient information on designation  
principles



Ministry of Environmental  
Protection and Regional  
Development  
Republic of Latvia

# Baltic marine protected areas

EC LIFE supported project, 2005-2009

Covering both directives

Inventory of coastal areas

Preparation of scientific justification

7 MPAs designated, total area 436 582 ha

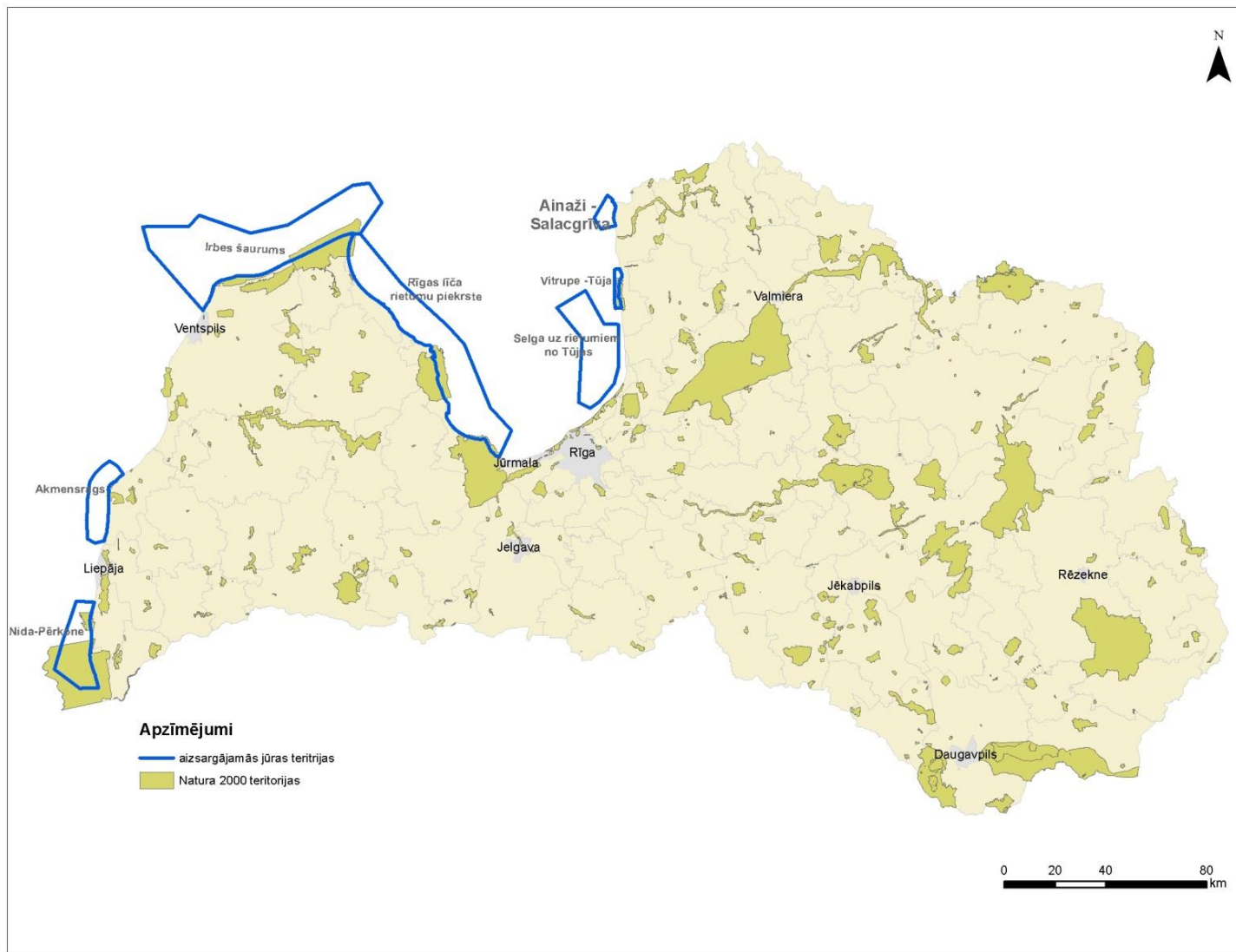
MPAs approved in 2011 (after the Baltic seminar !)





Ministry of Environmental  
Protection and Regional  
Development  
Republic of Latvia

# Baltic marine protected areas





Ministry of Environmental  
Protection and Regional  
Development  
Republic of Latvia

# Biogeographic seminar December, 2005

## Habitats

|          | Estonia | Lithuania | Latvia |
|----------|---------|-----------|--------|
| CD       | 10      | 16        | 3      |
| SUF      | 33      | 3         | 43     |
| IN MIN   | 13      | 11        | 6      |
| IN MOD   | 10      | 21        | 6      |
| IN MAJOR | 0       | 0         | 0      |
| SR       | 9       | 4         | 3      |



Ministry of Environmental  
Protection and Regional  
Development  
Republic of Latvia

# Biogeographic seminar December, 2005

## Species

|          | Estonia | Lithuania | Latvia |
|----------|---------|-----------|--------|
| CD       | 6       | 10        | 2      |
| SUF      | 17      | 7         | 32     |
| IN MIN   | 23      | 22        | 16     |
| IN MOD   | 6       | 13        | 5      |
| IN MAJOR | 0       | 2         | 0      |
| SR       | 2       | 6         | 4      |



Ministry of Environmental  
Protection and Regional  
Development  
Republic of Latvia

# Baltic Biogeographic seminar November, 2009 Habitats

|                | DE | DK | EE | FI | LT | LV | PL | SE |
|----------------|----|----|----|----|----|----|----|----|
| CD             |    |    |    |    |    |    |    |    |
| SUF            | 2  | 4  |    |    | 1  |    | 1  | 1  |
| IN<br>MIN      |    |    |    |    |    |    |    | 2  |
| IN<br>MOD      |    |    | 2  | 2  |    | 1  | 1  | 1  |
| IN<br>MAJ      |    |    |    |    |    |    |    |    |
| SR             |    |    | 1  | 1  | 2  | 2  |    |    |
| Not<br>present | 2  |    | 2  | 1  | 2  | 2  | 2  |    |



Ministry of Environmental  
Protection and Regional  
Development  
Republic of Latvia

# Baltic Biogeographic seminar November, 2009 Species

|             | DE | DK | EE | FI | LT | LV | PL | SE |
|-------------|----|----|----|----|----|----|----|----|
| CD          |    |    |    |    |    |    |    |    |
| SUF         | 4  | 5  | 3  |    |    |    |    | 1  |
| IN MIN      | 1  |    |    | 1  | 2  | 1  | 2  |    |
| IN MOD      |    |    |    | 1  |    | 1  | 3  | 2  |
| IN MAJ      |    |    |    |    |    |    |    |    |
| SR          | 1  | 1  | 1  | 1  | 1  | 1  | 1  | 1  |
| exemption   |    |    |    | 1  |    |    |    | 2  |
| Not present | 2  | 2  | 4  | 4  | 5  | 5  | 3  | 2  |



Ministry of Environmental  
Protection and Regional  
Development  
Republic of Latvia

# Habitats IN MOD

2130\* Fixed coastal dunes with herbaceous vegetation ("grey dunes")

2320 Dry sand heaths with *Calluna* and *Empetrum nigrum*

**6270\* Fennoscandian lowland species-rich dry to mesic grasslands**

7230 Alkaline fens

**6450 Northern boreal alluvial meadows**

**9080\* Fennoscandian deciduous swamp woods**



Ministry of Environmental  
Protection and Regional  
Development  
Republic of Latvia

# Habitats SR

**1110 Sandbanks which are slightly covered by sea water all the time**

1130 Estuaries

**1170 Reefs**

2330 Inland dunes with open *Corynephorus* and *Agrostis* grasslands

**9160 Sub-Atlantic and medio-European oak or oak-hornbeam forests oh the Carpinion betuli**



Ministry of Environmental  
Protection and Regional  
Development  
Republic of Latvia

# Species IN MOD

Lampetra fluviatilis

Ligularia sibirica

**Osmoderma eremita**

Salmo salar

**Unio crassus**





Ministry of Environmental  
Protection and Regional  
Development  
Republic of Latvia

# Species SR

*Alosa fallax*

*Misgurnus fossilis*

*Pelecus cultratus*

***Barbastella barbastellus***

***Phocoena phocoena***



Ministry of Environmental  
Protection and Regional  
Development  
Republic of Latvia

# Closure of gaps

Dedicated investigation of insufficiencies

Elaboration of management plans for  
designated Natura 2000 sites – additional  
inventories

Elaboration of species management plans

Monitoring

Mapping of habitats of EU importance

Designation of new sites



Ministry of Environmental  
Protection and Regional  
Development  
Republic of Latvia

# Difficulties

Limited capacity of experts- number,  
knowledge, calibration

Bias towards experts

Still limited knowledge on size of populations

Financial constraints

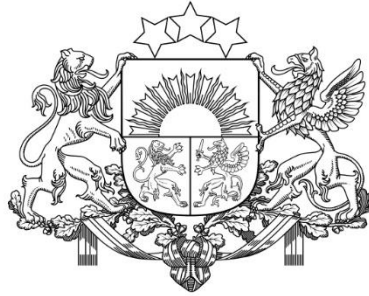
Lack of coordination

Unfavorable political situation

Uncertainties => difficult PR

Competing interests for management

External factors



Ministry of Environmental  
Protection and Regional  
Development  
Republic of Latvia

Thank you and good luck!