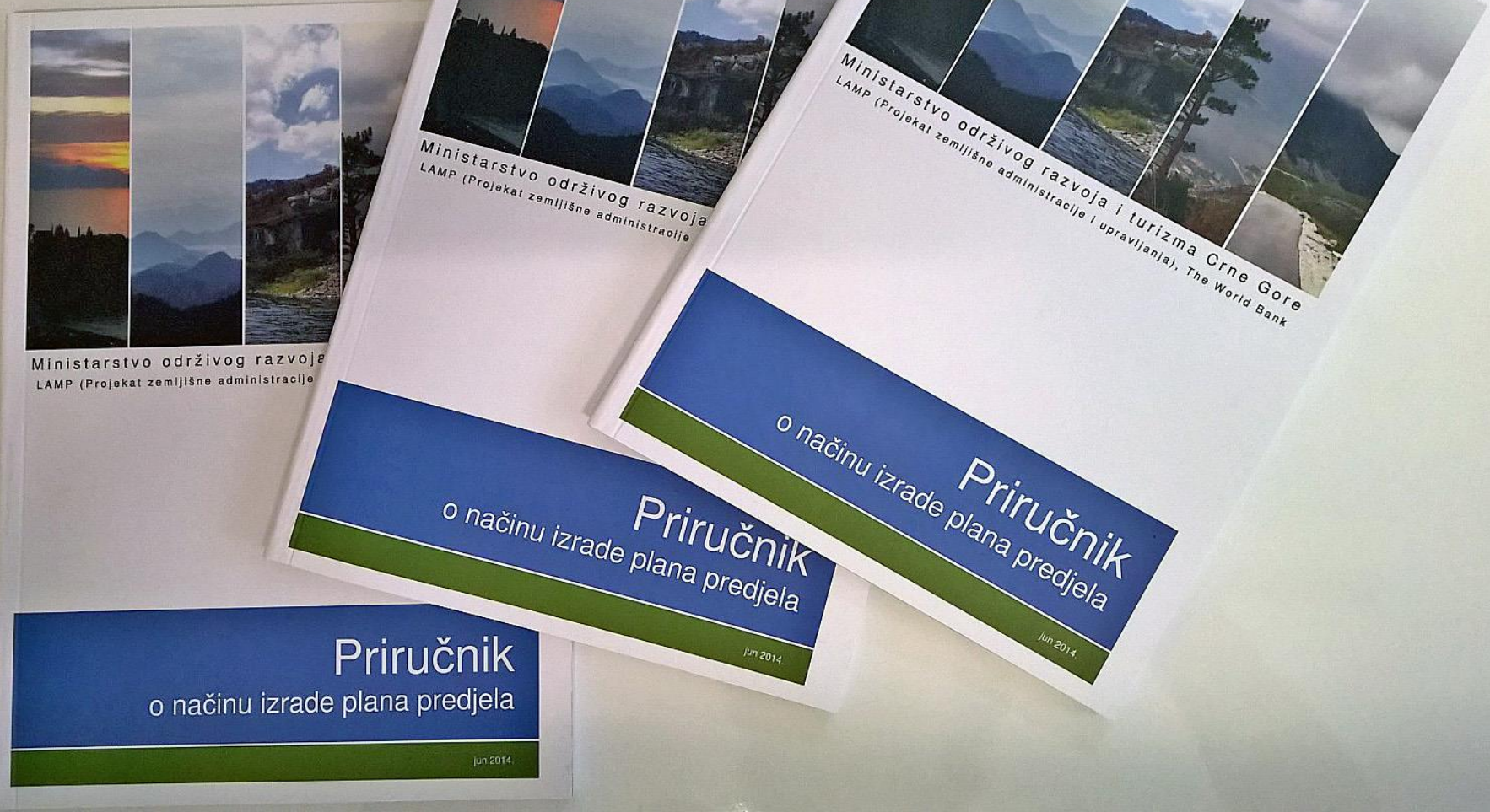


MANUAL FOR LANDSCAPE PLANNING

Ministry of Sustainable Development and Tourism



SANJA LJESKOVIC MITROVIC
MONTENEGRO



Ministry of Sustainable Development and
Tourism

MANUAL FOR LANDSCAPE PLANNING

□ INTRODUCTION

- defining terminology in landscape planning in Montenegro, European Landscape Convention, legal basis / levels, schemes, purpose and which is intended

□ IMPLEMENTATION OF LANDSCAPE PLAN

- landscape analysis (methodology, implementation)
- landscape plan
- detailed study landscape

□ PARTICIPATION

□ VISION

- ANNEX - visual impact assessment, field form

TERMINOLOGY

- LANDSCAPE
- LANDSCAPE POLICY
- ENVIRONMENTAL PROTECTION
- LANDSCAPE MANAGEMENT
- LANDSCAPE PLANNING
- CULTURAL LANDSCAPE
- NATURAL LANDSCAPE
- LANDSCAPE TYPES
- LANDSCAPE CHARACTER AREAS
- LANDSCAPE ELEMENTS/
LANDSCAPE PATTERNS
- LANDSCAPE CHARACTER ASSESSMENT
- LANDSCAPE EVALUATION
- LANDSCAPE VULNERABILITY

METODOLOGIJA ODRUŠA KARAKTERA

ASSESSMENT

KORAK 1

DEFINISANJE OBIMA

Svrha i ciljevi

Razmjera i niivo detaljnosti

Potrebni podaci i radni tim

Obim učešća zainteresovanih strana

KORAK 2

RAD U BIROU

Prirodni faktori

Kulturno sociološki faktori

Geologija

Reljef

Zemljište

Nacin korišćenja

Naselja

Starost

Voda

Vegetacija

Ogradenost

RADNA VERZIJA TIPOVA/PODRUCJA KARAKTERA PREDJELA

KORAK 3

TERENSKI RAD

Predioni elementi

Estetski i vizuelni faktori

Stanje, osjetljivost, trendovi

KORAK 4

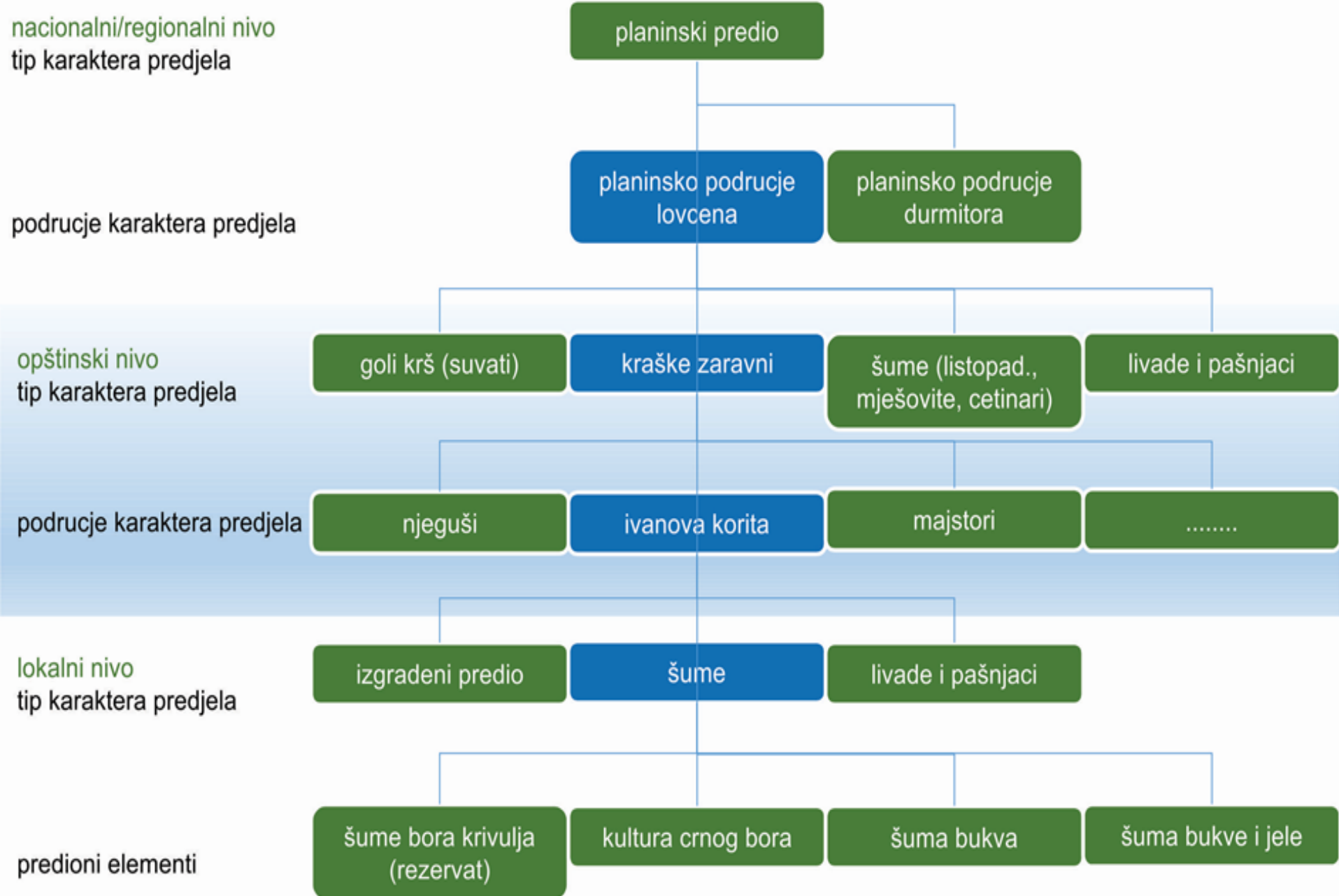
KLASIFIKACIJA I OPIS

Karta tipova/područja karakterera

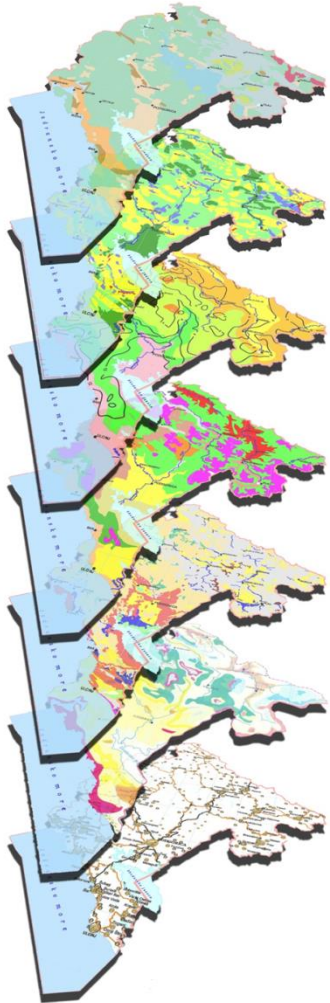
Opis tipova/područja karakterera

Identifikacija ključnih karakterera

LEVELS OF IDENTIFICATION AND CHARACTERIZATION OF LANDSAPES



INFORMATION BASE - OVERLAPPING OF MAPS

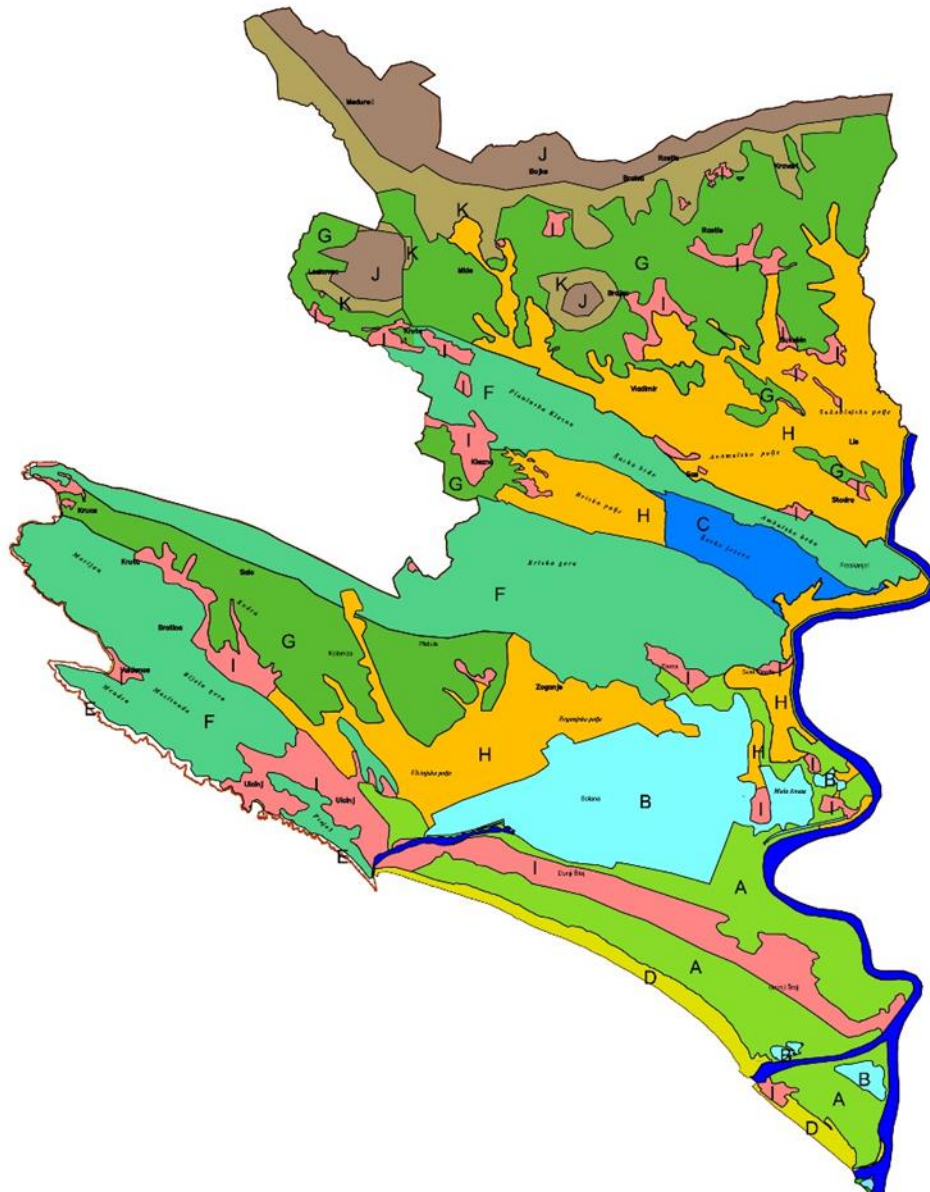


- Analysis of maps, relevant information and satellite imagery for understanding the landscape from and perception of how the various factors that shape the area appear together and formed the interaction patterns of landscape character
- research in office in field of: geology, terrain, land cover and distribution of settlements
- Overlapping maps should indicate a clear correlation between the different factors and allow the identification of areas with a similar character

Protection of natural and cultural landscapes and landscape planning

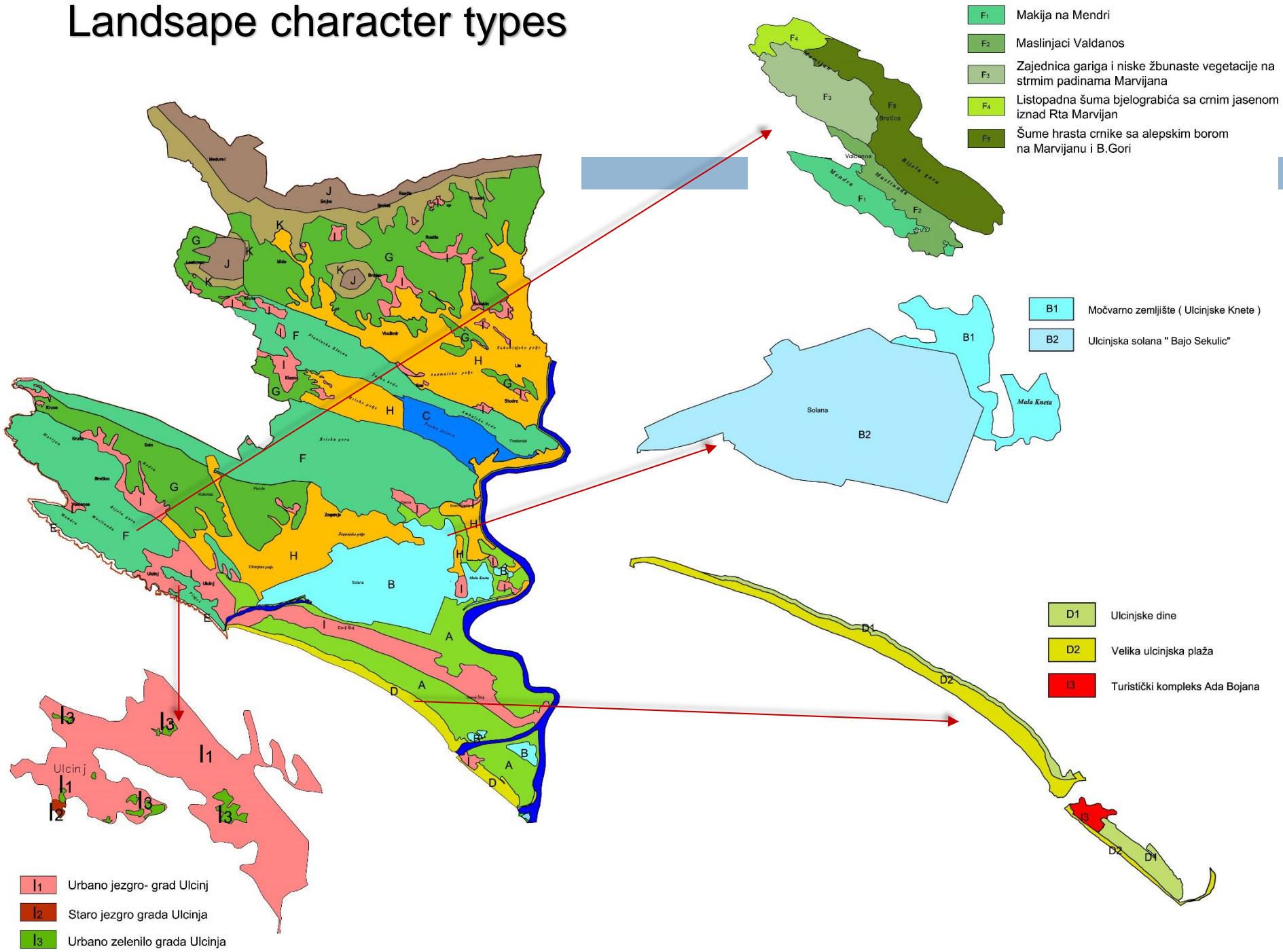
- Landscape plan may propose protection of natural areas which are recognized as valuable. Can propose boundaries of such sites, provide descriptions of areas and key features relevant to the protection of certain areas.
- Landscape plan can initiate protection of a cultural landscape on the basis of its authenticity, integrity, level of conservation, uniqueness and rarity, historical, scientific, architectural or other social significance. Can also provide guidance and measurements for the protection of "buffer" zones.

Landscape types— exemple Municipality of Ulcinj



- A** Šume priobalnog i plavnog pojasa na aluvijalnim terenima
- B** Močvarno zemljište na aluvijalnim terenima
- C** Jezero sa barskim sedimentima
- D** Šljunkovito-pjeskovita obala
- E** Primorski grebeni i stjenovite obale
- F** Brdsko zaleđe na slojevitim krečnjačkim terenima
- G** Brdovito i planinsko zaleđe na flišu (pločasti pješčari)
- H** Polja sa ekstenzivnom poljoprivredom na aluvijalnim terenima
- I** Izgrađena područja- naselja
- J** Planinsko zaleđe na masivnim krečnjacima
- K** Pretežno šumovite padine na deluvijumu

Landscape character types







THANK YOU
FOR YOUR ATTENTION