



Ministry of Environment Armenia

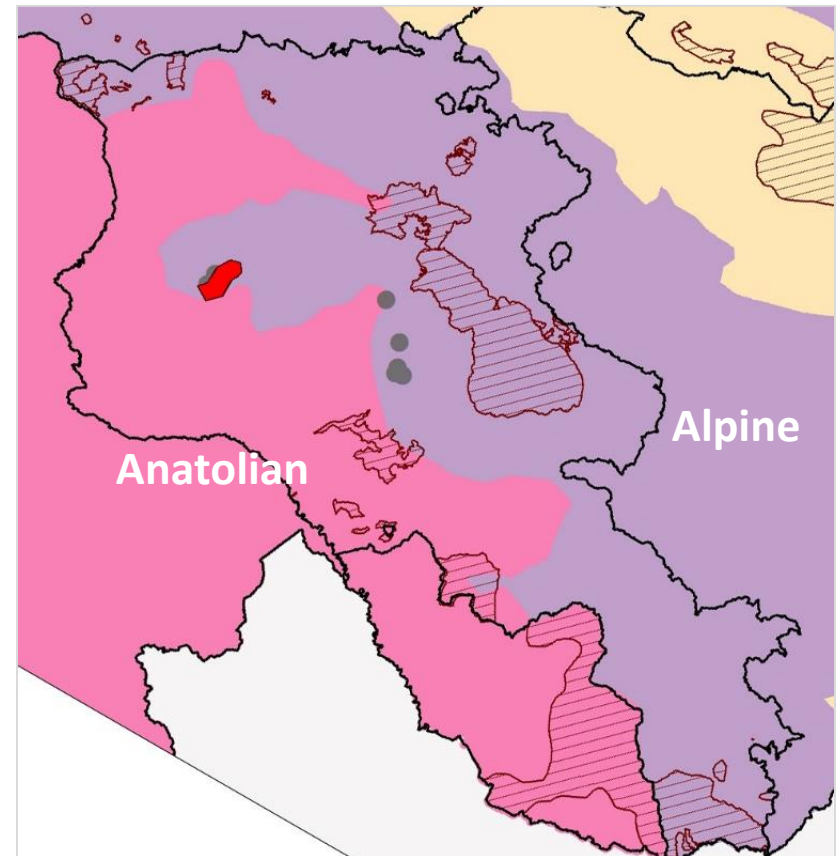
EMERALD NETWORK DEVELOPMENT IN ARMENIA



Protected Areas of Armenia

Biogeographical regions

- The Alpine in the north
- Anatolian in the south



Protected Areas of Armenia

Biogeographical regions

- The Alpine in the north
- Anatolian in the south

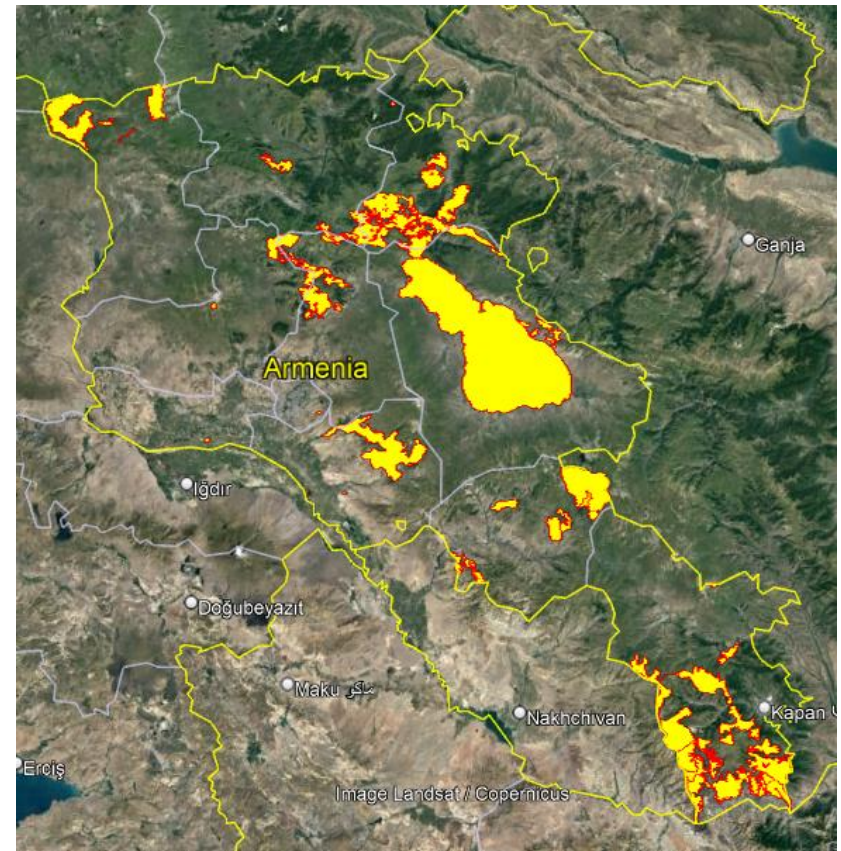
Protected areas of Nature

Nature reserves- 3

National park- 4

State sanctuaries- 27

Natural monuments- 262



Phases of Emerald Network Development in Armenia

Phase I

The establishment of “Emerald Network” started during 2007-2008 within the scope of the introduction of pilot “Emerald Network” program in Armenia and continued in 2009-2011

Phase II

aimed at the establishment of the network during 2013-2015



Marbled Teal's range was not covered in Phase I, but in Phase II it is covered by 100%.

Strengthening the Emerald Network in Armenia: Dedicated Efforts

- To secure a functional Emerald network we started to strengthen legal basis on environment conservation in Armenia
- With the assistance of our international partners Armenia implements projects that advancing the Emerald Network development



New legislation on biodiversity conservation in Armenia

- Twinning project
“Strengthening protection and sustainable use of biodiversity in Armenia in line with the European standards”
- Law on Fauna introduced new concept of IBAs



Strengthening the Emerald Network in Armenia: Dedicated Efforts

Duration: 18 months

EU4Environment Program sub-component

4.1: Support to protect biodiversity and natural ecosystems (Emerald network)

- Developing recommendations for National Emerald Action Plan to advance the Emerald Network
- Revision of Emerald sites to improve the coverage of target species and habitats
- Developing methodological guidelines for preparing Emerald Site management plans
- Developing 2 pilot management plans for the selected Emerald sites and capacity building.

Emerald Network

Next cycle of revision of the candidate Emerald sites aimed at

- Increase of coverage of target species distribution ranges by candidate Emerald sites
- Increase of coverage of target habitats by candidate Emerald sites



The coverage of Bearded Vulture's breeding sites will increase significantly

Future objectives

- Finalizing the review of the candidate Emerald sites which will include discussion with stakeholders
- Start designation process of the sites
- Start exercise on management plans for 2 pilot sites
- Generate management plans and monitoring for each site
- Initiate organization of next Bio geographical seminar

Thank you for your attention
Questions?



Regional endemic
Polyommatus ninae will be
protected thanks to the
Emerald Network