



TURKISH REPUBLIC MINISTRY OF FORESTRY AND WATER AFFAIRS



15th meeting of the Workshops for the implementation of the European Landscape Convention "Sustainable Landscapes and Economy"



Ramazan DİKYAR
Head of Vulnerable Areas Department
GENERAL DIRECTORATE OF
NATURE CONSERVATION AND NATIONAL PARKS

(Nevşehir, Turkey, 1-2 October 2014)

NATURE CONSERVATION IN TURKEY



CONTENTS

- Biodiversity Richness in Turkey
- Why?
- Landscapes in Turkey
- General Directorate of Nature Conservation and National Parks
- Protected Areas



Biodiversity of Turkey

RICHNESS OF TURKEY IN TERMS OF BIOLOGICAL DIVERSITY

	Flora	Fauna
	(Number of Species)	(Number of Species)
EU Countries	12.000	60.000
Turkey	11.000	80.000



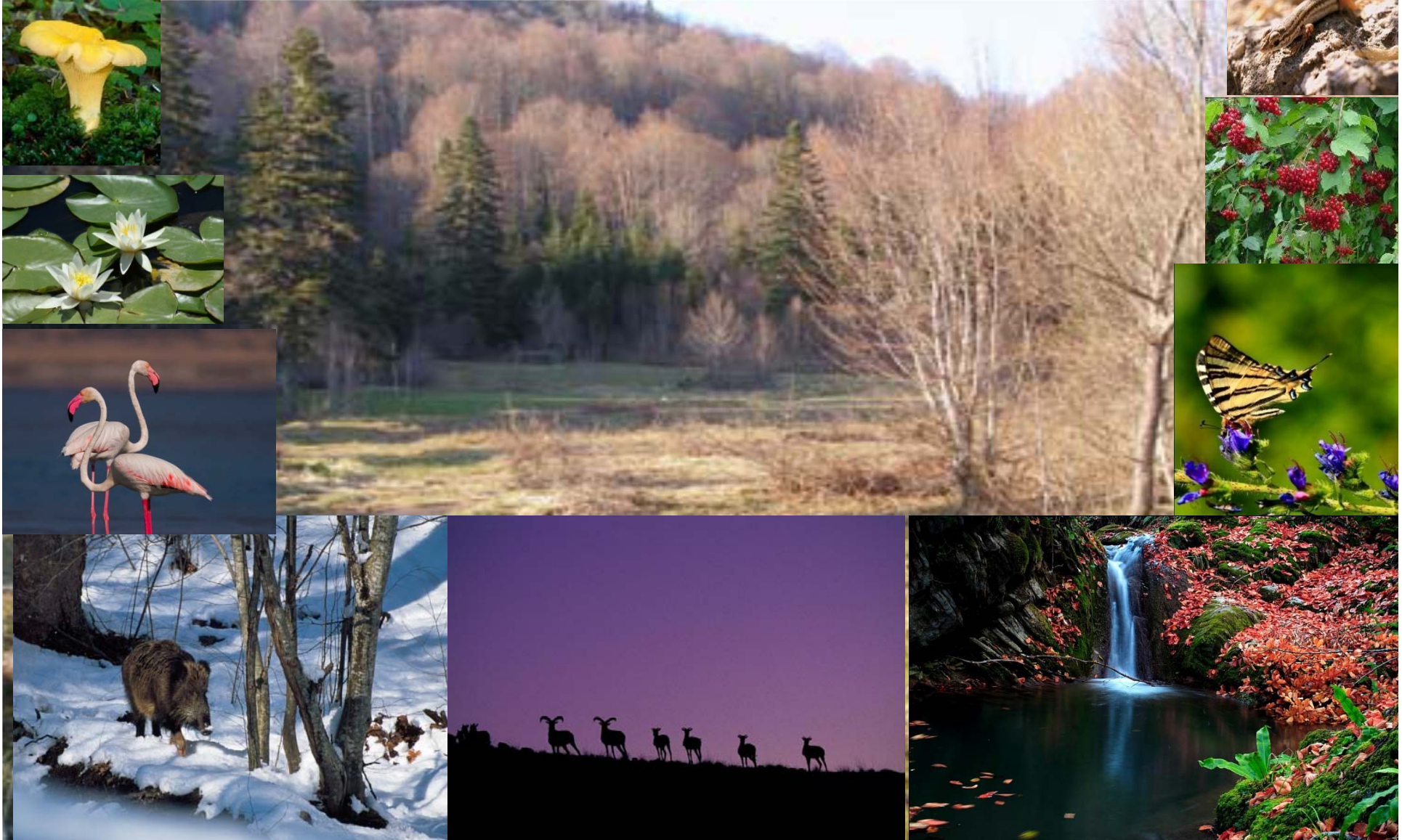
Biodiversity of Turkey

- Being surrounded by sea on three sides, Turkey has different characteristics, starting from sea level to 5000 meters above elevation differences,

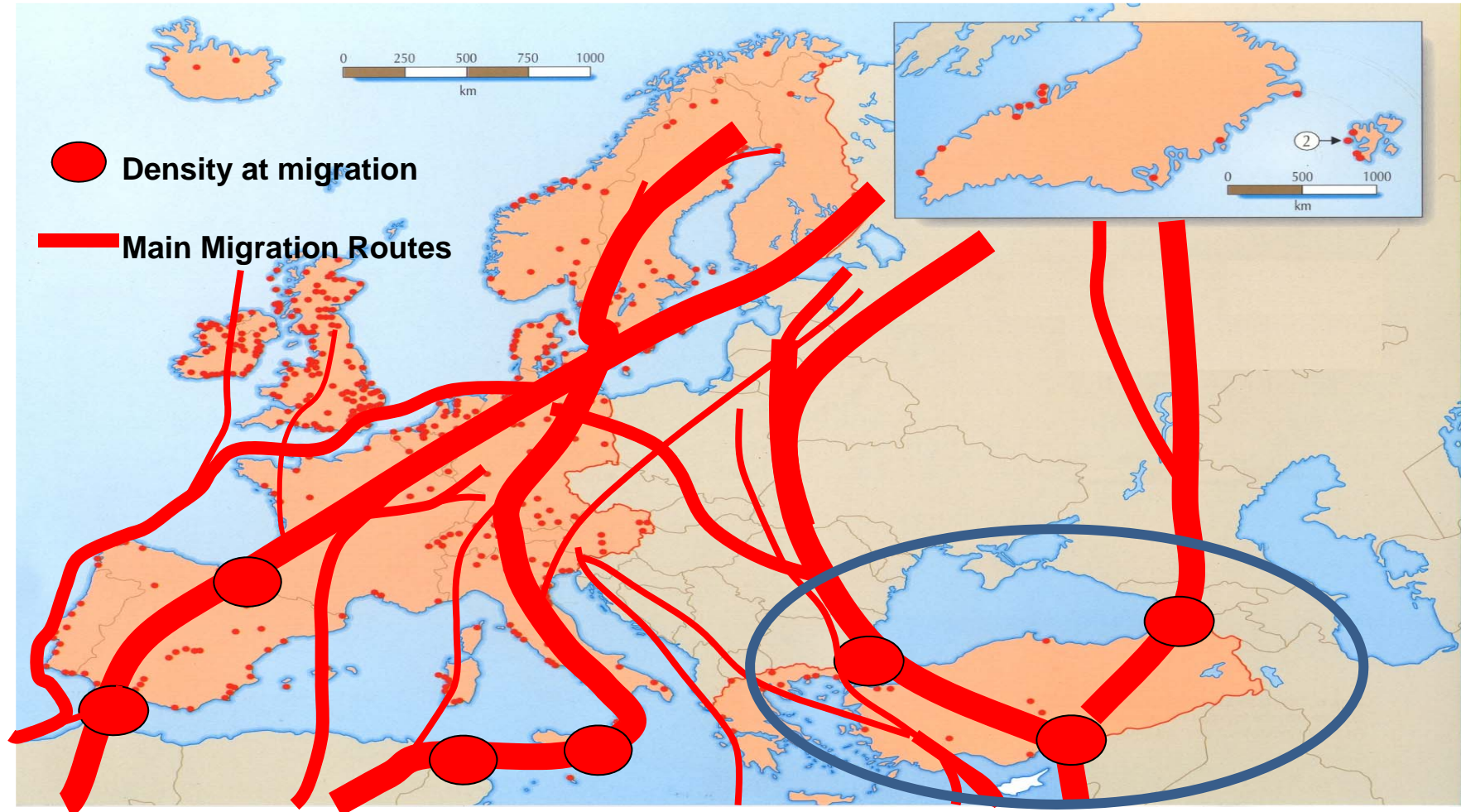


Biodiversity of Turkey

- having climate diversity,



Two of West Palearctic Bird Migration Routes meet on Turkey



Passing two of the most important bird migration routes in West Palearctic region from Turkey,

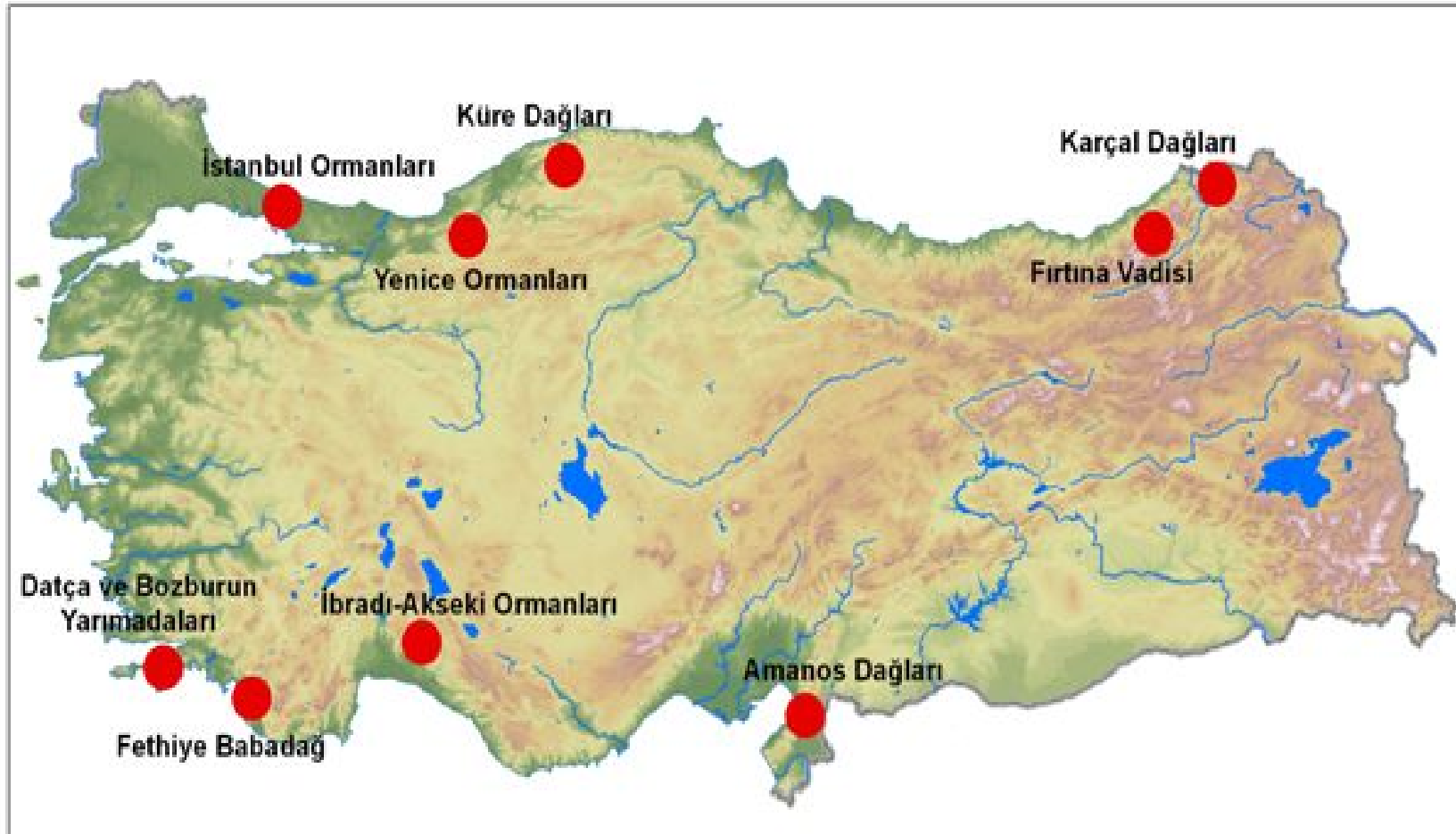
Biogeographical Regions of Turkey

Turkey has three bio-geographical regions



Biodiversity of Turkey

9 Forest Hot Spots in Turkey

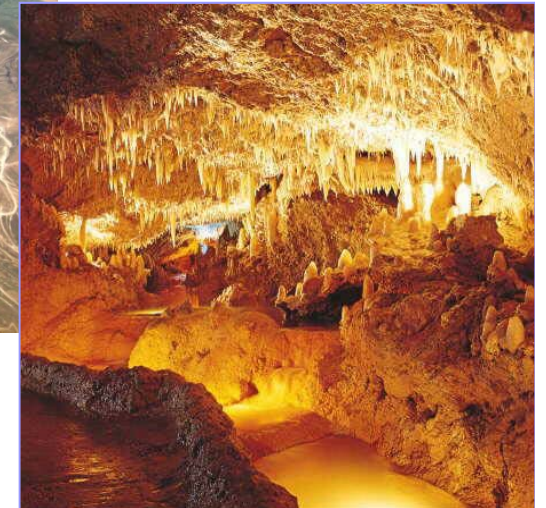


Biodiversity of Turkey



Landscapes in Turkey

There are different landscapes from wetlands to mountains,
from caves to steppes...



Landscapes in Turkey



Landscapes in Turkey



Landscapes in Turkey



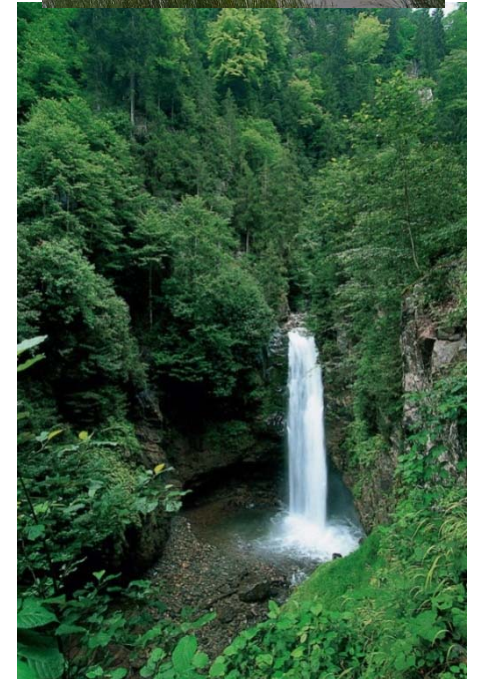
Landscapes in Turkey



Zeytintaş cave

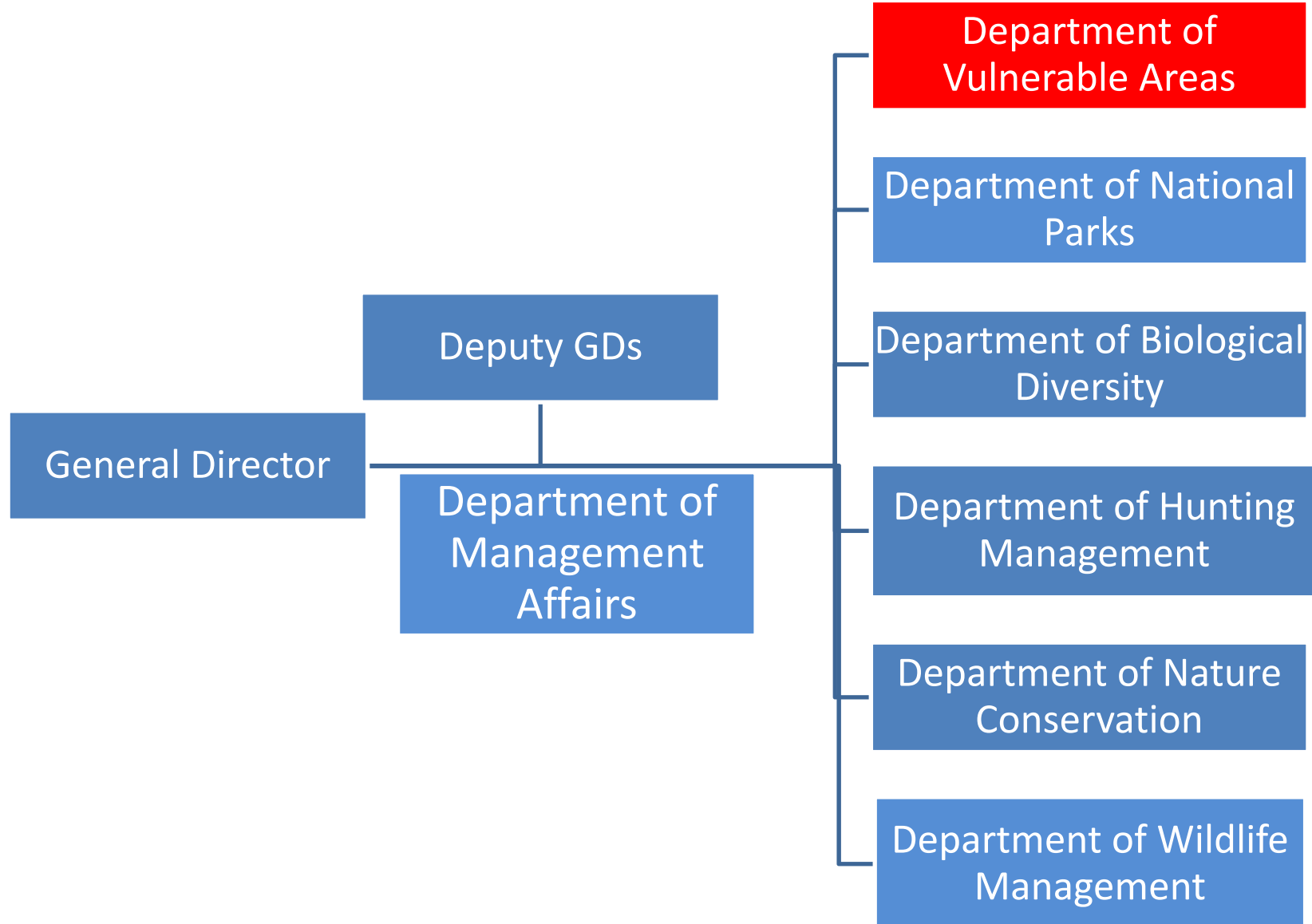
General Directorate of Nature Conservation and National Parks

General Directorate of Nature Conservation and National Parks is the most important guarantee in country's biodiversity, nature and management of protected areas.





GENERAL DIRECTORATE OF NATURE CONSERVATION AND NATIONAL PARKS





Structure of the General Directorate



- Activities on strengthening the institutional capacity in the field of nature protection were held. Four departments were established within the Ministry and the regional organization of the Ministry was restructured in 2011.
- **15** Regional Directorates,
- **81** Provincial Directorates,
- **10** National Parks Directorates were established within this context.



Criteria for Protected Areas Deliniation



RESOURCES VALUES

NATURAL RESOURCES VALUES	PHYSICAL NATURAL RESOURCES VALUES	Geological – Hydrogeological Resources Values
		Hydrological – Climatological Resources Values
	BIOLOGICAL NATURAL RESOURCES VALUES	Flora
		Fauna
		Habitat
		Ecosystem
CULTURAL RESOURCES VALUES	Archaeological	
	History and War History	
	Ethnographic characteristics	
	Mythos	
	Architectural	
LANDSCAPE RESOURCES VALUES		
RECREATIONAL RESOURCES VALUES		



PROTECTED AREAS IN TURKEY



Protected Areas	Total area (Ha)
National Parks (39)	848,202
Nature Parks (196)	90,218
Strict Nature Reserves (31)	64,242
Nature Monuments (112)	6,683
Wildlife Reserves (81)	1,191,340
Wetlands of International Importance (135), Ramsar Sites (14)	3,215,500

INTERNATIONAL CONVENTIONS

- Convention concerning the Protection of World Cultural and Natural Heritage (1983)
- Convention on Wetlands (RAMSAR) (1994)
- Convention on International Trade in Endangered Species of Wild Fauna and Flora (CITES) (1996)
- Convention on Biological Diversity (CBD)(1997)



INTERNATIONAL CONVENTIONS

- Convention on the Conservation of European Wildlife and Natural Habitats (BERN) (1984)
- The European Landscape Convention (2001)
- Barcelona Convention, Mediterranean Protocol Concerning Specially Protected Areas and Biological Diversity(1988)
- Bucharest Convention, Protocol for the Protection of Biological and Landscape Diversity in the Black Sea (2004)



Membership Responsibilities of Turkey for EU

Habitat Directive (92/43/EEC),

Birds Directive (79/409/EEC)

CITES and Relevant EU Directives (338/97/EC,
1808/2001/EC).





CASE STUDY: VALUATION OF ECOSYSTEM SERVICES IN SULTANSAZLIĞI NATIONAL PARK



- AIM: To estimate the actual and potential monetary value of Sultansazligi National Park
- First, a detailed social impact analysis is carried out. The economic dependency of different social groups to the natural landscape is determined.
- Total direct and indirect economical value: 1.35 Billion TL (in 24,000 ha wetland)
- Other than economical values, cultural, aesthetic, ethic and intrinsic values are also adressed with a detailed axiological approach.
- The same study is also scheduled to be conducted on 15 protected areas one from each Regional Directorate in next 3 years.



Thank you