



Bulgarian model

Execution of sentences organization

Branimir Mangarov
Governor of Burgas Prison

HISTORICAL REVIEW

of the modern Bulgarian service of execution of sentences

FIRST STEP

- ▶ *"Temporary rules on the establishment of prisons"*
- ▶ *29th of January 1879*

TIMES OF CHANGES

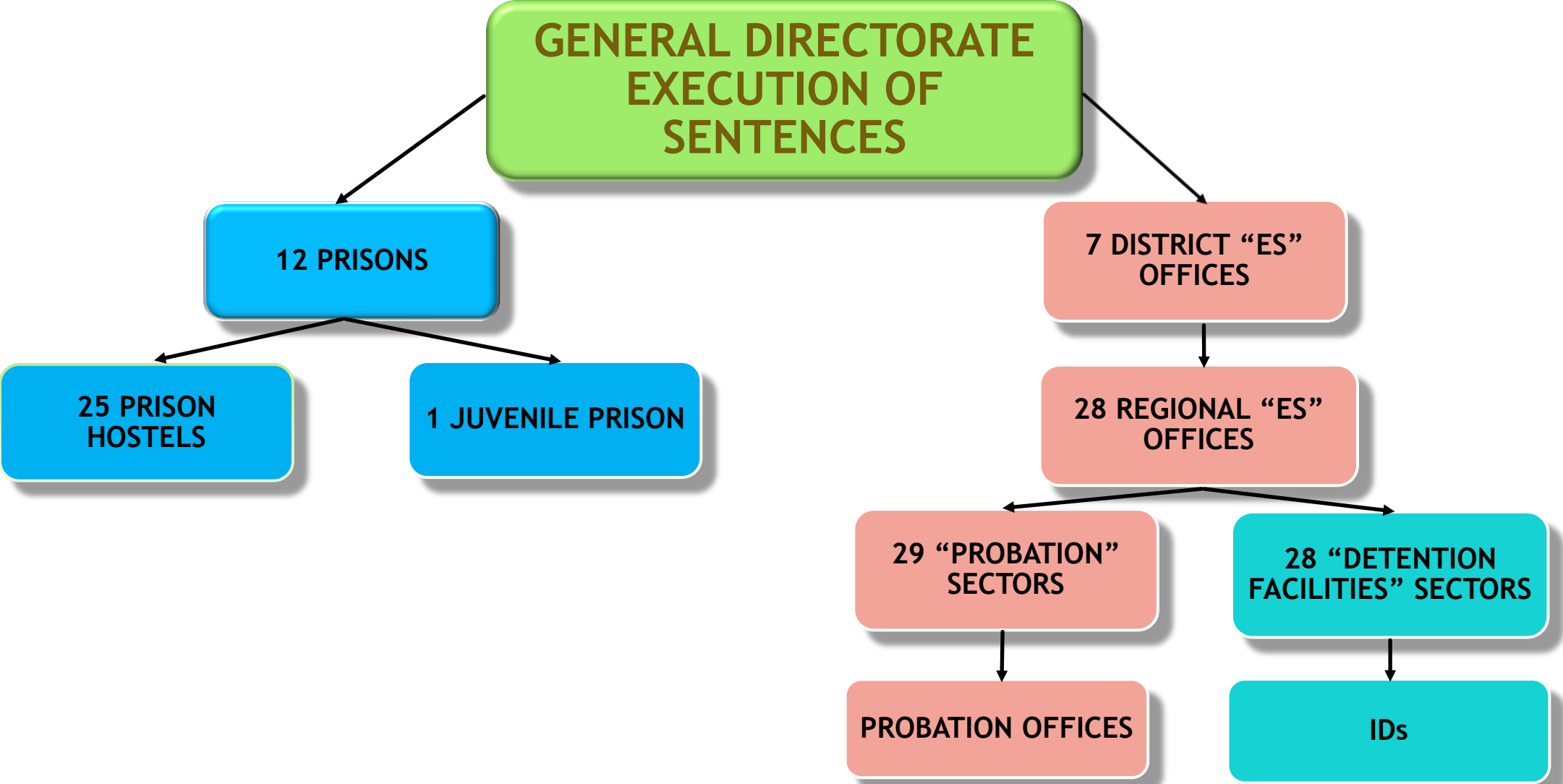
- ▶ Before 1989 - Prisons Department of the Ministry of Interior
- ▶ Since 1989 - General Directorate (of Prisons) in Ministry of Justice
- ▶ Before 1989 - Investigation detention centers - part of District Investigation Services
- ▶ Since 1999 - Investigation detention centers - part of General Directorate Execution of Sentences (GDES)
- ▶ Since 2005 - Establishment of 28 District Probation Offices - part of GDES
- ▶ Since 2007 - Establishment of 28 Regional Services Execution of Sentences
- ▶ Since 2017 - 7 Regional Services Execution of Sentences, including 28 Regional ES Services

New Challenge

PROBATION

- ▶ 1994 - First discussion on the issue of the probation as an alternative to imprisonment.
- ▶ 2004 - 2005 Education of first probation officers
- ▶ May 2005 - First 300 offenders sentenced to probation
- ▶ 2005 - 2000 offenders sentenced to probation
- ▶ 2006 - 7000 offenders sentenced to probation
- ▶ 2007 - 14 000 offenders sentenced to probation
- ▶ 2008 - 53.8 % of all offenders are sentenced to probation
- ▶ 2010 - More than 100 000 sentences to probation
- ▶ 2010 - Experimental use of electronic monitoring

CURRENT STRUCTURE



COOPERATION

between prisons and probation services

- ▶ *Probation officers in prisons*
- ▶ *Probation reports before release on parol*
- ▶ *Sharing information*
- ▶ *Sharing same risk assessment tool*
- ▶ *Sharing same data base*
- ▶ *Working under same rules (Law on Execution of Sentences and Detention in Custody)*
- ▶ *Easy re-assignment of officers*

CONCLUSIONS

- ▶ 13 successful years under the same roof
- ▶ Improvement of the interaction between prisons and probation service
- ▶ Officers have similar competencies
- ▶ Equal salaries
- ▶ Easy transfer of offenders between prison and probation when needed
- ▶ The years past have shown that Bulgarian model is an outstanding model

THANKS FOR YOUR
ATTENTION !

branimir.mangarov@gdin.bg

www.gdin.bg