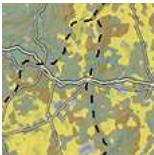


## Landscape inventory of Galicia: public participation for landscape characterisation and planning,

Institute of Land Studies, Ministry of Environment and Spatial Planning of the Government of Galicia, Spain

The Landscape Inventory of Galicia is a technical document focused on the first stage of landscape planning, namely on landscape analysis and diagnosis. It includes: delimitation of landscape areas and identification of landscape types in each area; zoning of landscape units and delimitation of areas of special landscape interest; inventory of landscape values; identification of degraded areas; analysis of the characteristics of each type of landscape, and of the forces and pressures transforming them. The first stage of the inventory involved the identification of 258 landscape types, resulting in the delimitation of 28 350 landscape units by means of a semi-automatic classification method. Citizens' opinions were taken into account from the beginning of the process and included in the final results. Particular note was taken of those analyses in which public opinion plays a key role, such as characterisation of landscape types and identification of special interest areas and degraded areas. In order to enhance the effectiveness of the participatory process, the opportunities offered by new geospatial information technologies have been exploited and a geographic information system (GIS) that can be used online by citizens has been developed. The information collected through this system was processed jointly with those of the experts and technicians, and enabled the development of the inventory.



The Committee of Ministers acknowledged and praised the great value of each project presented for the 5th Session 2016-2017 of the Landscape Award of the Council of Europe's European Landscape Convention and recommended making it well-known to the general public for its exemplary value, and as a source of inspiration. "Landscape Inventory of Galicia: Public Participation for Landscape Characterisation and Planning" has seen strong public participation in a process of identifying and characterising landscapes with a view to developing a landscape atlas of the Galicia region. It is a decisive step towards the development of landscape action strategies.