

# European Landscape Convention THE LANDSCAPE AWARD ALLIANCE OF THE COUNCIL OF EUROPE

European spatial planning  
and landscape Series, No. 105

Volume 1

COUNCIL OF EUROPE



CONSEIL DE L'EUROPE



# European Landscape Convention

## THE LANDSCAPE AWARD ALLIANCE OF THE COUNCIL OF EUROPE

**Volume 1**  
2008-2017

**1st Session 2008-2009**  
**2nd Session 2010-2011**  
**3rd Session 2012-2013**  
**4th Session 2014-2015**  
**5th Session 2016-2017**

**European Spatial Planning and Landscape Series**  
2017, No. 105



Council of Europe

French edition:

*L'Alliance du Prix du paysage du Conseil de l'Europe, Volume 1, 2008-2017*

All requests concerning the reproduction or translation of all or part of the document should be addressed to the Directorate of Communication (F-67075 Strasbourg Cedex or [publishing@coe.int](mailto:publishing@coe.int)). All other correspondence concerning this publication should be addressed to the Directorate of Democratic Participation.

Cover and layout: Documents and Publications Production Department (SPDP), Council of Europe  
Cover photos: Council of Europe, Projects of Sessions 1 (2008-2009), 2 (2010-2011), 3 (2012-2013), 4 (2014-2015), 5 (2016-2017).

*The Landscape Award Alliance of the Council of Europe gathers the exemplary achievements presented by the States Parties to the European Landscape Convention.*

For further information, consult the Council of Europe website:

European Landscape Convention  
[www.coe.int/EuropeanLandscapeConvention](http://www.coe.int/EuropeanLandscapeConvention)  
[www.coe.int/en/web/landscape/landscape-award-alliance](http://www.coe.int/en/web/landscape/landscape-award-alliance)

Contact:

Council of Europe  
Secretariat of the European Landscape Convention  
Maguelonne Déjeant-Pons  
Susan Moller

© Council of Europe, October 2017  
Printed at the Council of Europe



# Contents

Preface .....	9
Introduction .....	11
<b>1st Session 2008-2009</b> .....	<b>13</b>
Presentation .....	15
The Parc de la Deûle, Lille Métropole, France .....	19
The Cristina Enea Park, San Sebastián City Council, Spain .....	21
The tourist trail marking system, Czech Tourist Club, Czech Republic .....	23
The landscape management of the Hämeenkyrö National Landscape Area, City of Hämeenkyrö, Finland.....	25
The Implementation of the Complex Nature Conservation and Landscape Management Programme in the Zámoly Basin, Public Foundation for Nature Conservation Pro Vértes, Hungary.....	27
The Val di Cornia Park System, Val di Cornia, Italy .....	29
The Biodiversity and Natural Resources Management Project, Association for the Conservation of Nature, Turkey.....	31
The regional distribution of landscape types in Slovenia, University of Ljubljana, Biotechnical Faculty, Department of Landscape Architecture, Slovenia .....	33
<b>2nd Session 2010-2011</b> .....	<b>35</b>
Presentation .....	37
Carbonia: the landscape machine, Joint Committee of the Municipality of Carbonia, City of Carbonia, Italy .....	41

Grant programmes for local communities to shape their surroundings into a place where they are happy to live, Ekopolis Foundation, Slovakia.....	43
Education and awareness-raising: city, territory, landscape, Generalitat of Catalonia and Landscape Observatory of Catalonia, Spain.....	45
The Durham Heritage Coast, Durham Heritage Coast Partnership, United Kingdom.....	47
The Landscape Route of the Escaut Plains Natural Park, Escaut Plains Natural Park, Belgium.....	49
The hazel orchards in the village of Polystypos, Polystypos Community Council, Cyprus.....	51
The Čehovice landscape, Prostějov district in Moravia, Regional Land Office Prostějov, Czech Republic.....	53
The management of endangered traditional biotopes and the preservation of the traditional rural landscape, Finnish Association for Nature Conservation, Finland.....	55
The Port aux Cerises open air leisure centre, Joint Committee for Investigation, Planning and Management of the Port aux Cerises Outdoor Leisure Centre, France.....	57
The traditional stone culture of the Bükkalja landscape, Beehive Rock Nature Conservation and Cultural Association, Hungary.....	59
The Dutch Landscape Manifesto, Foundation Landscape Manifesto, the Netherlands.....	61
The Herand Landscape Park, County Government of Hordaland, Norway.....	63
The landscape of the Backi Monostor village, “Podunav” Backi Monostor, Serbia.....	65
“We are making our landscape”, Slovenian Association of Landscape Architects, Slovenia....	67
<b>3rd Session 2012-2013</b> .....	69
Presentation .....	71
Preserving ecological value in the landscape of the Szprotawa River Valley, Lower Silesian Association of Landscape Parks, Poland.....	79

The rebirth of the Alto Belice Corleonese region through the recovery of lands confiscated from the mafia organisations, LIBERA, Associations, names and numbers against mafias, Italy .....	81
“U-parks, U-turns we love”, Utena district Municipality, Lithuania .....	83
The Gate of Gornje Podunavlje, NGO Podunav, Backi Monostor, Serbia .....	85
Hoge Kempen National Park, Regionaal Landschap Kempen en Maasland vzw, Belgium .....	87
Environmental education in the town of Strakonice year by year or “Pilgrimage through the Contemplative Landscape”, Municipality of Strakonice, Czech Republic .....	89
The Landscape Projects of Hyypä Valley, City of Kauhajoki, Hyypä village association, Finnish Forestry Centre/Public Services, Unit of South and Central Ostrobothnia, Finland .....	91
The Grand Pré Park, City of Langueux, France .....	93
The Complex Landscape Rehabilitation and Development Programme in the Gerecse Mountains and the Által Creek Valley, Association for the Restoration and Development of the Által Creek Valley (Tata), Hungary .....	95
The Bere Island Conservation Plan, The Heritage Council and the Bere Island Project Group, Ireland .....	97
The Dzintari Forest Park, Jurmala City Council, Latvia .....	99
Planning policy for conservation and sustainable development of 20 national landscapes in the Netherlands, Stichting Nationale Landschappen (NGO), the Netherlands .....	101
The Furnas Landscape Laboratory (Furnas LandLab), Azores Regional Directorate of the Environment, Portugal .....	103
Agricultural Development and Environmental Protection in Transylvania, Agricultural Development and Environmental Protection Foundation (ADEPT), Romania.....	105
Salvage, revival and operation of the forest railway in the landscape of Cierny Balog, Ciernohronska železnica NGO, Slovak Republic .....	107
The Landscape and water-management restoration of Škocjanski Zatok nature reserve, DOPPS, BirdLife Slovenia, Slovenia .....	109

The sustainable revitalisation of the protected landscape of Geria, Consortium for the defence and promotion of the landscape of Geria, Spain .....	111
The South Pennines Watershed Landscape Project, Pennine Prospects, United Kingdom .....	113
<b>4th Session 2014-2015</b> .....	115
Presentation .....	117
The borderless co-operation of local communities for the landscape heritage of the “Fabulous” Hetés, The villages of Bödeháza, Gáborjánháza, Szijártóháza, Zalaszombatfa (Hungary), the villages of Genterovci, Kamovci, Radmožanci, Žitkovci, Mostje, Banuta (Slovenia), Greenways Methodology Association and the Iron Curtain Trail Association, Hungary .....	123
The service tree, the tree of the Slovácko Region, Municipality of Tvarožná Lhota and NGO International Exchanges (INEX) – Voluntary Service of the White Carpathians, Czech Republic .....	127
Liptovská Teplička: protection of unique historical landscape types, Village of Liptovská Teplička, Slovak Republic .....	129
The Sénia Territory Millennium Olive Tree Landscape, Taula del Sénia Mancomunidad, Spain .....	131
The enhancement of the natural site and landscape of Hof ter Musschen, Commission on the environment of Brussels and its environs ASBL, Belgium .....	133
The Ecomuseum Blaca Hermitage, Cultural Centre of Brač, Croatia .....	135
The development of the Historical Centre of Agios Athanasios, Municipality of Agios Athanasios, Cyprus .....	137
The “Bull by the Horns”: grazing in nature and landscape management, Centre for Economic Development, Transport and the Environment for Central Finland .....	139
The Agricultural Park of Paduli, Open Urban Laboratory, Italy .....	141
The town of Kuldīga in the Venta Valley: preserving a unique landscape for future generations, Kuldīga Municipality, Latvia .....	143

The New Dutch Waterline, Board of the New Dutch Waterline, the Netherlands .....	145
Biodiversity and Natural Resources Management in the Camili Basin, Camili Environmental Protection and Development Association Turkey .....	147
<b>5th Session 2016-2017</b> .....	149
Presentation .....	151
Regeneration of Daugavpils Fortress to Preserve Cultural and Historical Objects, Daugavpils City Council, Latvia .....	157
The Hillside of the Citadel in Liège: 1999-2010. From an Enclosure to a Network, City of Liège, Belgium .....	159
Regeneration of the landscape and archaeological Park of the Valley of the Temples in Agrigento, Department of Cultural Heritage and Identity of Sicily, Italy .....	161
Alna Environmental Park: a blue-green corridor of biodiversity, recreational opportunities and sustainable urban water management, Municipality of Oslo, Agency for Urban Environment, Norway .....	163
Hriňovské lazy: landscape of values, Town of Hriňová, Slovak Republic .....	165
Management of the Madriu-Perafita-Claror Valley, included on the list of UNESCO World Heritage Sites in the Cultural Landscape Category, Madriu-Perafita-Claror Valley management plan steering committee, Andorra .....	167
Education of Children in Heavily Industrialised Landscapes, Elementary School in the city of Most, Czech Republic .....	169
“Shepherding Weeks”, Metsähallitus Parks and Wildlife Finland, Finland .....	171
Landscape as a Link, Saint-Paul, La Réunion, France .....	173
Developing “Water Codes” in Larissa City Centre: the “Sculpted River” of Larissa, Municipality of Larissa, Greece .....	175
Landscape Development and Community Sample Programme for a Pleasant Village, Local Government of Mátraderecske, Roma Minority Local Government of Mátraderecske, Hungary .....	177

Protection and management of Zasavica Special Nature Reserve: a tool for sustainable development, Nature Conservation Movement of Sremska Mitrovica, Serbia .....	179
Landscape inventory of Galicia: public participation for landscape characterisation and planning, Institute of Land Studies, Ministry of Environment and Spatial Planning of the Government of Galicia, Spain .....	181
Appendix 1 – European Landscape Convention of the Council of Europe .....	183
Appendix 2 – Resolution CM/Res(2008)3 of the Committee of Ministers of the Council of Europe on the rules governing the Landscape Award of the Council of Europe.....	193
Appendix 3 – Resolution CM/Res(2017)18 of the Committee of Ministers of the Council of Europe on the Landscape Award Alliance of the Council of Europe .....	199

## Preface

Within these pages you will find proof of one essential but frequently overlooked dimension of human rights: our landscapes.

Whether rural or urban, coastal or inland, degraded or well-preserved, our surroundings have an almost unquantifiable bearing on our quality of life. It is not only areas of outstanding beauty which require our attention, but the rich variety of settings in which we live – many of which have been undergoing rapid change.

The Council of Europe's Landscape Award celebrates projects which seek to protect and improve those landscapes. Through their innovation and collaboration the winners and nominees of the last five competitions have shown that, in the pursuit of human dignity, our living environment matters.

Together they embody the spirit of our European Landscape Convention – the first international treaty of its kind – which recognises that sustainable environments are those which balance our economic, social, cultural and environmental needs. Successful landscapes support living, working communities in which we protect our natural heritage too.

It is a pleasure to bring together their achievements in this collection. I hope they will inspire others and, to all nominees of the Landscape Award, past and present: I wish you every success.

Thorbjørn Jagland  
Secretary General of the Council of Europe





## Introduction

The European Landscape Convention is the first international treaty on sustainable development based on a balanced and harmonious relationship between social needs, economic activity, the environment and culture to be exclusively concerned with landscape enhancement. Its purpose is to promote landscape protection, management and the planning of European landscapes and to organise international co-operation on landscape issues.

The scope of the convention is extremely broad: it applies to the parties' entire territory and covers natural, rural, urban and peri-urban areas, which include land, inland water and marine areas. It deals with degraded landscapes as well as those that can be considered outstanding. In other words, it recognises the importance of all landscapes, and not just those of exceptional beauty, as having a crucial bearing on quality of life and as deserving attention in landscape policies. A great many rural and peri-urban areas in particular are undergoing drastic change and merit greater care from the authorities and the public.

The Convention provides for a "Landscape Award of the Council of Europe" which recognises policy or measures which local or regional authorities or non-governmental organisations have adopted to protect, manage and plan their landscape, which have proved to be lastingly effective and which can thus serve as an example to other territorial authorities in Europe.

On 20 February 2008 the Committee of Ministers of the Council of Europe adopted Resolution CM/(2008)3 on the rules governing the Landscape Award of the Council of Europe. The Award is given every two years by the Committee of Ministers, based on proposals from an international Jury and the Committee of experts of the Council of Europe in charge of monitoring the implementation of the Convention.

The great achievements realised in the member States of the Organisation on the occasion of the first five sessions of the Landscape Award of the Council of Europe – 2008-2009, 2010-2011, 2012-2013, 2014-2015 and 2016-2017 – presented in this collection, show that it is possible to promote the territorial dimension of human rights and democracy, thus improving the landscape features of people's surroundings. The Resolution CM/Res (2017)18 on the Landscape Award of Council of Europe recognises their exemplary value.

Maguelonne Déjeant-Pons  
Executive Secretary of the European Landscape Convention



**1st Session 2008-2009**



## Presentation

Eight projects were presented by the States Parties to the European Landscape Convention<sup>1</sup> to the Secretary General of the Council of Europe on the occasion of the 1st Session 2008-2009 of the Landscape Award of the Council of Europe.

On 23 September 2009, the Committee of Ministers of the Council of Europe decided, in accordance with the Resolution of the Committee of Ministers CM/Res(2008)3 on the rules governing the Landscape Award of the Council of Europe<sup>2</sup>, and on the proposals of the jury and of the Committee of experts responsible for monitoring the implementation of the Convention, to:

1. confer the Landscape Award of the Council of Europe's European Landscape Convention for the 1st Session of the Award 2008-2009 on:

**The Park de la Deûle, Lille Métropole, France,**

considering that the project fulfils the criteria for the award concerning sustainable territorial development, exemplariness, public participation and awareness-raising, and bearing in mind the success of the links between urban space and rural space, as well as the important commitment of all those involved in the cleaning up and new use of the landscape;

2. confer a special mention of the Landscape Award of the Council of Europe's European Landscape Convention for the 1st Session of the Award 2008-2009 on:

**The Cristina Enea Park, San Sebastián City Council, Spain,**

considering that the project answers the four criteria for the conferment of the award regarding sustainable territorial development, exemplariness, public participation and awareness-raising, and acknowledging the excellent results of the long-term planning carried out with a view to the qualitative promotion of the urban landscape whilst bearing in mind socio-cultural elements;

---

1. See Appendix 1.

2. See Appendix 2.

3. congratulate warmly the organisers of the following projects presented for the 1st Session of the Award 2008-2009 of the Landscape Award of the Council of Europe's European Landscape Convention:

**The marking system of the tourist trails, Czech Tourist Club, Czech Republic,**

considering the importance of the project with a view to implementing the European Landscape Convention;

**Landscape Management of Hämeenkyrö National Landscape Area, City of Hämeenkyrö, Finland,** considering the importance of the project with a view to implementing the European Landscape Convention;

**Implementation of the Complex Nature Conservation and Landscape Management Programme in the Zámoly Basin, Public Foundation for Nature Conservation Pro Vértes, Hungary,** considering the importance of the project with a view to implementing the European Landscape Convention;

**The Val di Cornia Park System, Val di Cornia, Italy,**

considering the importance of the project with a view to implementing the European Landscape Convention;

**Biodiversity and Natural Resources Management Project, Association for the Conservation of Nature, Turkey,**

considering the importance of the project with a view to implementing the European Landscape Convention;

4. recognise the exemplariness of the following project presented for the 1st Session of the Award 2008-2009 of the Landscape Award of the Council of Europe's European Landscape Convention:

**Regional distribution of landscape types in Slovenia, University of Ljubljana, Biotechnical Faculty, Department of Landscape Architecture, Slovenia,**

considering that it provides a useful methodological framework for landscape management at national, regional and local level, and highlights the diversity of landscapes for the public.







© Quentin Spriet

## The Parc de la Deûle, Lille Métropole

The idea for the Parc de la Deûle first emerged in the 1960s, but met with local objections and was abandoned. Twenty years later, the project resurfaced and this time was positively received. In 1995, a plan was formalised by Simon–JNC International to design the entire park. Work started in 1999 and, from the very outset, one of the key issues was the protection of the quality of the drinking water which supplies a third of the metropolis with water. As well as being working waterways, the Deûle and Sechin canals are host to biotopes of great ecological interest. In the past the park suffered from a lack of identity because of the way in which the land had been divided. The new developments in the area reapportioned the land between Lille and Lens, which created a link between these urban areas and an array of new social, biological and economic opportunities. The existing attributes of the landscape were used to redevelop the space without reinventing it. The project had three main components: nature rediscovered (La Gîte in Santes), a transformation of industrial wasteland; nature tamed (Les Ansereuilles in Wavrin), a reconciliation of the urban and rural world with agricultural and leisure environments close together; and nature imagined (The Mosaïc Garden in Houplin), reflecting the different cultures of Lille's communities. There has been constant interaction between the locals and the park users from the start, as both groups will be ensuring the maintenance and success of the space in the future.



The Committee of Ministers of the Council of Europe conferred the Landscape Award of the Council of Europe's European Landscape Convention for the 1st Session of the Award 2008-2009 on the organisers of the project, considering that it fulfils the criteria for the award concerning sustainable territorial development, exemplariness, public participation and awareness-raising, and bearing in mind the success of the links between urban space and rural space, as well as the important commitment of all those involved in the cleaning up and new use of the landscape.



© Linajeros Cruz

## The Cristina Enea Park, San Sebastián City Council

The Cristina Enea Park was originally constructed as a private park in the 1890s, but came to be donated to the city of San Sebastián by the Duke of Mandas. Since 1995, the city council has been involved in the conservation, protection and management of this historic, romantic park. These efforts form a part of the wider Green Plan project for the whole city, which seeks to restore and restructure the landscape of the area as an essential part of San Sebastián's landscape planning. During its long history, the park had suffered a gradual decline. Under the guidance of objectives set by the municipality, the project restored the park's landscape and pathways as well as its flora and fauna whilst maintaining and reinforcing the essential characteristics of the town. Some of the steps taken include: preventing soil erosion, reconstructing deteriorating paths, providing adequate rainwater and sanitary systems, restoring deteriorating buildings and stopping the uncontrolled spread of vegetation. The park combines sustainable policies with urban quality and encourages biodiversity within the urban area. The value of the project is twofold: it preserves both the park's cultural and natural heritage, and it protects the park both as a romantic setting and a place of biodiversity.



The Committee of Ministers of the Council of Europe conferred a special mention of the Landscape Award of the Council of Europe's European Landscape Convention for the 1st Session of the Award 2008-2009 on the organisers of the project, considering that it responds to the four criteria for the award as regards sustainable territorial development, exemplariness, public participation and awareness-raising, and acknowledging the excellent results of the long-term planning carried out with a view to the qualitative promotion of the urban landscape whilst bearing in mind socio-cultural elements.





© Czech Tourist Club

### The tourist trail marking system, Czech Tourist Club



The Czech Tourist Club has a long tradition: in 2008, it celebrated its 120th anniversary, and nature conservation and landscape have been part of its objectives since 1922. A campaign of marking and maintaining tourist routes has been underway since the creation of the organisation. The project's goal is to improve access to the landscape and the relationship between people and their surroundings. Tourist routes have been marked on tourist maps and walking routes have been complemented by skiing and cycling alternatives. Forty-eight accommodation facilities have also been set up to support expanding tourism. The marking of the tourist trails is mainly done by volunteers and the tourist club can still boast the largest voluntary force in the country. The organisation is youth driven, with more than 10,000 members below the age of 26. Apart from the tourist trails, the tourist club has been involved in various other projects such as the establishment of Tatransky National Park after an agreement with Poland in the 1920s and the 2006 opening of a museum in the former Jewish synagogue in Bechyně.

The Committee of Ministers of the Council of Europe congratulated the organisers of the project and recommended making it well-known to the general public for its exemplary value, and as a source of inspiration.





© Aarre Leskinen

## The landscape management of the Hämeenkyrö National Landscape Area, City of Hämeenkyrö



The Landscape Management of Hämeenkyrö National Landscape Area project is composed of three separate development schemes: Hämeenkyrö's National Landscape, Environmental Management in the National Landscape and Hämeenkyrö Landscape Tourism. These activities are managed by an array of local and regional associations, as well as national organisations. Hämeenkyrö is one of the 27 landscapes identified as a national landscape in 1992. Landscapes are places of particular cultural, historical and natural significance to the nation. Hämeenkyrö is characterised by its traditional rural scenery, which inspired Frans Eemil Sillanpää, who received the Nobel Prize for literature in 1939, and who was keenly aware of the position of the human being in the natural world. A national landscape management plan was developed, which prescribed certain measures including: identifying value and problem factors in the landscape, as well as landscape and forest management. In 1999, the Mahnala village school became the Environmental School and in 2003 it was awarded Green Flag accreditation. Environmental management is at the forefront of the project, with the objective of reviving diverse aquatic life, cultural landscapes and nature conservation to preserve the biodiversity of the area. Tourism is also of great importance in maintaining the socio-economic balance of the community and local amenities, and a range of activities have been developed to support it.

The Committee of Ministers of the Council of Europe congratulated the organisers of the project and recommended making it well-known to the general public for its exemplary value, and as a source of inspiration.



© Gábor Kiss

## **The Implementation of the Complex Nature Conservation and Landscape Management Programme in the Zámoly Basin,** Public Foundation for Nature Conservation Pro Vértes



The Pro Vértes Foundation was founded in 1991 and became a public foundation in 1994. Originally its main aim was to resolve problems of heritage protection, natural as well as cultural, in the face of increased privatisation. Its main activities today are: landscape management, nature conservation, environmental education and awareness-raising, the protection of national monuments as well as ecotourism, which underpins the work. A major part of the nature conservation and landscape management programme is the preservation and maintenance of residual sites of natural or close-to-natural areas which have suffered from the effects of intensive agriculture, industry or transport. Measures undertaken include the re-establishment of water supplies to the moorlands around the Vértes that had been threatened by draining, and the introduction of a herd of Hungarian Grey cattle to manage the grasslands in a natural way. Landscape management also includes the protection of architectural monuments in the region, such as the Geszer House. Education and awareness-raising are an essential part of the programme. When a research programme was started to assess the effects of mowing in grasslands, the results were made available to the public through education, short courses and ecotourism.

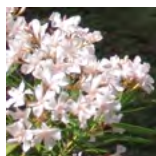
The Committee of Ministers of the Council of Europe congratulated the organisers of the project and recommended making it well-known to the general public for its exemplary value, and as a source of inspiration.



© Val di Cornia Archives

## The Val di Cornia Park System,

### Val di Cornia



The aim of the Val di Cornia Park System is to support local sustainable development of the economy and social progress through the use of readily available culture and the environment. In order to fulfil this objective, there is a body within the Val di Cornia district council which aims to bring the governing processes closer to local and regional development in order to adapt the means to the needs. This body is responsible for administration, environmental and labour policies as well as for culture and cultural heritage. The Parchi Val di Cornia S.p.A is an entirely publicly owned joint stock company, which has been entrusted by the municipalities to implement the measures advised by the local institutional body. These include the creation and management of reception services to enhance the visitor experience (visitor centres, centres for experimental archaeology and environmental education, nature trails and walks of archaeological interest, museums and tours). They also include measures to manage associated services such as bookshops, hostels and car parks. This business-led management of cultural and natural assets provides a unified force promoting historical and environmental resources, which is self-sustainable through the money generated from tourism. Through the project the population was made aware of the region's mining past and shown how the mining heritage had been successfully transformed to tourist activities.

The Committee of Ministers of the Council of Europe congratulated the organisers of the project and recommended making it well-known to the general public for its exemplary value, and as a source of inspiration.

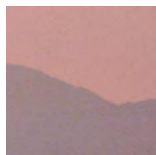




© GEF II Project Archives



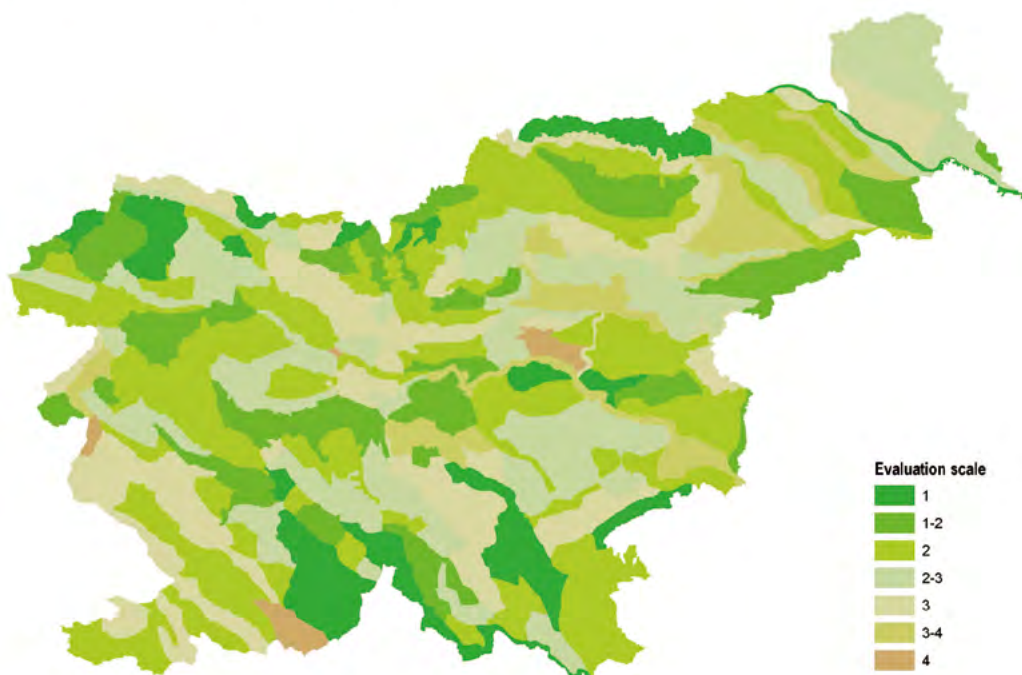
## The Biodiversity and Natural Resources Management Project, Association for the Conservation of Nature



Turkey stretches over a vast area and contains four distinct biogeographic zones. Providing adequate protection for all landscapes poses a great challenge, as 75% of all European plant life is represented in the country. Since 2000, the Biodiversity and Natural Resources Management Project has been promoting the assessment and analysis of protected areas and their potential threats. Effective, intersectoral, participatory planning, as well as the sustainable development of protected areas, was carried out successfully. In order to achieve this, work was divided into three main spheres: attempts to strengthen the national framework for biodiversity conservation; the development of prototypes for protected area management and project management and monitoring. The work allowed for a review of legal and regulatory frameworks regarding the environment, and the monitoring of the biodiversity whilst continuing a campaign for increased national awareness of biodiversity. The project has had an impact in two important areas: the creation of a national institution for landscape and the institutionalisation of nature conservation.

The Committee of Ministers of the Council of Europe congratulated the organisers of the project and recommended making it well-known to the general public for its exemplary value, and as a source of inspiration.

## Evaluation of Slovene Landscapes



© University of Ljubljana

## The regional distribution of landscape types in Slovenia, University of Ljubljana, Biotechnical Faculty, Department of Landscape Architecture



The Regional Distribution of Landscape Types project was launched in order to create an extensive inventory of Slovenian landscapes. Landscape characteristics and conditions were recorded and categorised according to this information, providing the basis for protection as well as guidelines for development and conservation. This project was run by the Department of Landscape Architecture in the Biotechnical Division of the University of Ljubljana. The project was commissioned by the Spatial Planning Directorate, which is responsible for the national spatial management of Slovenia. The Regional Distribution of Landscape Types project compiled, through extensive fieldwork, records with photographs and definitions of all Slovenian regions. The landscapes were then divided into units and a typological classification was conducted. These data produced a complete picture of the contemporary Slovenian landscape. In a time of great change, owing to increased internationalisation, this information was used to guarantee that town and country planning takes into account the need for protection, management and planning of the landscape. The results can now be used for a great variety of endeavours, such as marketing Slovenia as a tourist destination and creating new policies for agricultural development and heritage protection.

The Committee of Ministers of the Council of Europe congratulated the organisers of the project and recommended making it well-known to the general public for its exemplary value, and as a source of inspiration.



## **2nd Session 2010-2011**



## Presentation

Fourteen projects were presented by the States Parties to the European Landscape Convention<sup>1</sup> to the Secretary General of the Council of Europe on the occasion of the 2nd Session 2010-2011 of the Landscape Award of the Council of Europe.

On 12 October 2011, the Committee of Ministers' Deputies decided, in accordance with the Resolution of the Committee of Ministers CM/Res(2008)3 on the rules governing the Landscape Award of the Council of Europe,<sup>2</sup> and on the recommendations of the Committee of Experts responsible for monitoring the implementation of the Convention, to:

1. confer the Landscape Award of the Council of Europe's European Landscape Convention for the 2nd Session of the Award 2010-2011 on:

**Carbonia: the landscape machine, Joint Committee of the Municipality of Carbonia, Italy,**

considering the exhaustive and multi-scale development of the project. This exemplary achievement, which aims to regenerate a 20th century modernist, urban and mining landscape in a sustainable way, amply fulfils all the criteria for the Landscape Award, proving that sustainable territorial development can be achieved by public participation at all levels and accompanied by extensive awareness-raising. The use of historical resources to create a new identity based on research and sustainable tourism has provided an urban landscape development model. The work on the mine was accompanied by a revival of the whole city with the restoration of public squares, roads and monuments. This regeneration of the urban fabric of Carbonia has infused a new cultural identity to the town. The project is a perfect example of the sustainable development of an urban landscape, with extensive international implications for the redevelopment of other degraded urban and industrial areas;

2. confer identical special mentions of the Landscape Award of the Council of Europe's European Landscape Convention for the 2nd Session of the Award 2010-2011 on:

**The grant programmes for local communities to shape their surroundings into a place where they are happy to live, Ekopolis Foundation, Slovakia,**

---

1. See Appendix 1.

2. See Appendix 2.

considering that it constitutes an exemplary project, in light of the successful and unique results of the project, which helped to mobilise the local population and provided them with financial resources to improve their own landscapes. Its effects have been extensive with project sites all over the Slovak Republic contributing to sustainable territorial development. Public participation and awareness-raising are at the very core of this project, the local population undertaking a long-term management of their landscape as surroundings where they are happy to live;

**The project of education and awareness-raising: city, territory, landscape, Generalitat of Catalonia and Landscape Observatory of Catalonia, Spain,**

considering this project an exemplary achievement, aiming to forge a new territorial culture and a feeling of responsibility vis-à-vis the landscape. Considering its quality and scope, this creative educational project provides an excellent model for other similar schemes. It acknowledges that landscape is constantly evolving and that educated citizens are better able to deal with future challenges. Its diversity and richness promote citizen responsibility and create an exemplary model for education based on public participation and awareness-raising;

**The Durham Heritage Coast, Durham Heritage Coast Partnership, United Kingdom,**

considering this project an exemplary achievement of rehabilitation and regeneration of a coastal area previously marked by distinct degradation. Characterised by sustainable territorial development, exemplariness, public participation and awareness-raising, the project achieved extraordinary results through mobilising local populations and creating a regenerated landscape and a new identity. It forms an excellent model for the regeneration of degraded coastal areas;

3. acknowledge the great value of each project presented for the 2nd Session 2010-2011 of the Landscape Award of the Council of Europe's European Landscape Convention and make them well known to the general public as a source of inspiration:

**The Landscape Route of the Escaut Plains Natural Park, Escaut Plains Natural Park, Belgium,**

considering this landscape trail to be an exemplary achievement, which allows locals as well as visitors to discover the richness and diversity of the landscape before them and to make them aware of the important role it plays in the evolution of natural, cultural, economic and political developments of a territory;

**The hazel orchards in the village of Polystypos, Polystypos Community Council, Cyprus,**

considering this an exemplary project to revitalise a rural landscape initiated by the local population, based on local natural and cultural resources and the use of traditional techniques;



**The Čehovice Landscape, Prostějov district in Moravia, Regional Land Office Prostějov, Czech Republic,**

considering that this is a superb rehabilitation project in a previously degraded area to promote the recovery of this landscape with its biodiversity, for the benefit of the local economy and the well-being of the population;

**The management of endangered traditional biotopes and the preservation of the traditional rural landscape, Finnish Association for Nature Conservation, Finland,**

considering that this is an exemplary regeneration of a living traditional landscape, rich in biological diversity, and implemented with the greatest respect for the environment and landscape values;

**The Port aux Cerises open air leisure centre, joint committee for investigation, planning and management of the Port aux Cerises outdoor leisure centre, France,**

considering that this project is a fine example of the planning of a degraded landscape and of its adaptation to the changing times for the well-being and quality of life of the population;

**The traditional stone culture of the Bükkalja landscape, Beehive Rock Nature Conservation and Cultural Association, Hungary,**

considering that this is a fine example of a landscaping project based on the promotion of geological heritage, which has enabled the recreation of a traditional landscape supported by new socio-economic forces, benefiting the local population;

**The Dutch Landscape Manifesto, Foundation Landscape Manifesto, the Netherlands,**

considering this an exemplary project which enables the sharing of expertise, the education and mobilisation of citizens' initiatives, in order to support the sustainable development of the landscape;

**The Herand Landscape Park, County Government of Hordaland, Norway,**

considering that this is a fine example of a citizens' initiative, deriving from the inhabitants of a rural village who took care to make use of their history and traditions in a dynamic perspective;

**The landscape of Backi Monostor village, "Podunav" Backi Monostor, Serbia,**

considering that this is an exemplary project, promoting the mobilisation of a community to support the development of resources and traditional crafts in a large alluvial area;

**"We are making our landscape", Slovenian Association of Landscape Architects, Slovenia,**

considering this to be an innovative and exemplary education promotion project, raising awareness amongst young people from an early age, highlighting the importance of a sustainable territorial development of the landscape.



© City of Carbonia

## Carbonia : the landscape machine, Joint Committee of the Municipality of Carbonia, City of Carbonia

The project, Carbonia: the landscape machine, aims to regenerate a 20th century modernist, urban and mining landscape which, after the closing of the mines in the 1970s, suffered extensive decline. In 2001 the town was recognised as an important example of a “rationalist” urbanism that deserved to be preserved and developed. In order to achieve this, a plan of action was created. The city refocused its efforts on the promotion of research and higher education, and began the conversion of the industrial sector, by focusing on non-polluting clean energy, and improving the abandoned mining landscape by developing it for research, culture and industry. The great Serbariu mine was reclaimed and rehabilitated; 16 buildings, shafts and galleries were transformed. The Italian Centre of the Culture of Coal now has its headquarters in the heart of the former mine. Since the beginning of the project the negative demographic trend in the city has been contained and employment has increased by 12%.



The Committee of Ministers of the Council of Europe conferred the Landscape Award of the Council of Europe’s European Landscape Convention for the 2nd Session of the Award 2010-2011 on the project’s organisers, noting in particular the exhaustive and multi-scale development of the project. The Committee of Ministers considered that this exemplary achievement, which aims to regenerate a 20th-century modernist, urban and mining landscape in a sustainable development perspective, amply fulfils all the criteria of the Landscape Award, proving that sustainable territorial development can be achieved by public participation on all levels and accompanied by extensive awareness-raising. The use of its historical resources to create a new identity, based on research and sustainable tourism, has provided a model for the development of urban landscapes. The work on the mine was accompanied by a revival of the whole city with the restoration of public squares, roads and monuments. This regeneration of the urban fabric of Carbonia has created a new cultural identity for the city. This project is a perfect example of the sustainable development of an urban landscape, with extensive international implications for the redevelopment of other urban and industrial degraded areas.



© Dusan Kubicka, TBS-JUS, Martin

## Grant programmes for local communities to shape their surroundings into a place where they are happy to live,

Ekopolis Foundation

The Ekopolis Foundation introduced a systematic support tool, in the form of grant programmes, for local communities which wish to improve their urban and rural landscape. These subsidies were designed to turn national and political strategies into concrete actions. The Foundation established six types of subsidies: “Public spaces”, “Green belt grants”, “Greenways”, “People for trees”, “Living trails” and the “Tatra Fund”. It provides financial and technical assistance as well as training, which enables the local population to invest in a long-term plan of maintenance and upkeep of its landscape. The project’s main aims are to increase the aesthetic and environmental value of the landscapes, to motivate civic participation, and to preserve natural and cultural heritage, as well as providing people with the tools to interpret and create a link to their heritage. Some 142 projects have benefited from funding amounting to a total of 998,000€. While the financial contribution was of great importance, there was also a strong focus on awareness-raising. The Ekopolis Foundation supplied organisations as well as the public with the means to shape their urban and rural landscape into an enjoyable place to live.



The Committee of Ministers of the Council of Europe conferred a special mention of the Landscape Award of the Council of Europe’s European Landscape Convention for the 2nd Session of the Award 2010-2011 on the project’s organisers, considering that it constitutes an exemplary project in view of its successful and unique results. It has helped to mobilise the local populations and provide them with financial resources to improve the quality of their own landscapes. Its effects have been extensive, with project sites all over the Slovak Republic contributing to sustainable territorial development. Public participation and awareness-raising are at the very core of the actions carried out, the local populations undertaking the long-term management of their landscapes to ensure they provide an environment in which the inhabitants are happy to live.





© Generalitat of Catalonia

## Education and awareness-raising: city, territory, landscape, Generalitat of Catalonia and Landscape Observatory of Catalonia

The project, education and awareness-raising: city, territory, landscape was developed by the Catalan Ministry of Education, the Catalan Ministry of Town and Country Planning and Public Works, and the Landscape Observatory of Catalonia. It promotes the education of young people in Catalonia aged between 12 and 16, in the fields of landscape and territory. The project is based on two types of teaching material: leaflets and a website offering interactive activities. Through providing compulsory education on the theme of territory and landscape, the authorities aim to build a new culture of territory and a feeling of responsibility for landscapes. The programme includes an important analytical component, aimed at encouraging the students to feel connected to, and relate directly with, the landscape that surrounds them. The leaflets were distributed to all secondary schools in Catalonia, to a total of 450,000 students. At the same time, teachers were trained on the topic of landscape to enable them to take full advantage of the teaching material. The project is concerned with long-term sustainable development, to change the way that individuals think about landscape and thus to avoid its future degradation.



The Committee of Ministers of the Council of Europe conferred a special mention of the Landscape Award of the Council of Europe's European Landscape Convention for the 2nd Session of the Award 2010-2011 on the authors of the project, considering that it is an exemplary achievement, aiming to forge a new territorial culture and a feeling of responsibility vis-à-vis the landscape. Considering its quality and scope, this creative educational project provides an excellent model for any other similar scheme. It recognises that the landscape is in constant evolution and that educated citizens are better able to deal with future challenges. Its diversity and richness promote responsibility amongst citizens and it provides an exemplary model for education based on public participation and awareness-raising.



© Mike Smith



### The Durham Heritage Coast, Durham Heritage Coast Partnership

The area of the Durham Heritage Coast has made a remarkable recovery since 1993, when it was still used as a dumping site for waste from the local coal industry. Through the project “Turning the Tide” the coast has come into its own and has embraced its geological, natural and historical heritage which supports increasing numbers of tourists. Through this project the spoil heaps have been removed from the shores, foot and cycle paths have increased access to the area and the re-creation of biotopes has increased the flora and fauna. The improvement of the inshore waters has been a main priority and these efforts have also been extended to integrate adjoining areas to create an Integrated Coastal Management Zone. The social needs of the area are the focus of constant attention, and the sustainable economic development is supported by a social and economic regeneration involving public participation and tourism. Guided walks and tourist paths do not only introduce visitors to the value of the Durham Heritage Coast but also allow the local population to reconnect to their homeland and fully appreciate their heritage.



The Committee of Ministers of the Council of Europe conferred a special mention of the Landscape Award of the Council of Europe’s European Landscape Convention for the 2nd Session of the Award 2010-2011 on the organisers of the project, considering that it is a fine example of the rehabilitation and regeneration of a coastal area previously marked by distinct degradation. Characterised by sustainable territorial development, exemplariness, public participation and awareness-raising, the project achieved extraordinary results through mobilising local populations, creating a regenerated landscape and a new identity. It forms an excellent model for the regeneration of other degraded coastal areas.



© Escaut Plains Natural Park

## The Landscape Route of the Escaut Plains Natural Park, Escaut Plains Natural Park



The Landscape Route of the Escaut Plains Natural Park is not an ordinary tourist route, as it aims to introduce its visitors to the richness and diversity of the landscape, making them aware of the important role that landscape plays in natural economic, cultural and political development. It can be accessed by bike, car or on foot. The landscape route stretches through several municipalities and even into France, and is marked with signposts. These signs provide visitors with information about their surroundings, and an insight to a world of new knowledge to better understand and appreciate the landscape. This route is open to everyone: locals who wish to become better acquainted with their surroundings, or tourists who wish to benefit from a more complete understanding of the natural park. The project, which aims to identify truly remarkable sites, was carried out in close co-operation with colleagues from the communities concerned for the park.

The Committee of Ministers of the Council of Europe recognised the great value of the project considering it an exemplary landscape trail which aims to allow locals as well as visitors to discover the richness and the diversity of the landscape before them and to make them aware of the important role landscape plays in the natural, cultural, economic and political developments of a region.



© Antonia Theodosiou

## The hazel orchards in the village of Polystypos, Polystypos Community Council

The village of Polystypos has a long tradition of hazel orchard cultivation. As this practice had declined in recent years, measures have been taken to support local farmers: old footpaths have been extensively repaired using traditional dry stone construction methods. The project not only contributes to the diversification and to the development of the economy, but also improves environmental awareness, tourism and recreation. By using the traditional techniques of dry stone construction, the farmers have the opportunity to expand their activities through increased accessibility to the hazel orchards, while preserving the beauty of the landscapes and contributing to biodiversity. Local people were involved in every stage of the project: from learning and then using the ancient art of dry stone construction to the reconstruction of the footpaths and tourism facilities. The project has brought back to life a village which had been destined to decline, and is an invaluable example of a way of using natural resources and settings to generate prosperity without sacrificing an area's charm.



The Committee of Ministers of the Council of Europe recognised the great value of the project: it is a fine example of a project aimed at revitalising a rural landscape with the support of the population, using local natural and cultural resources and traditional techniques.





© Julia Tobikova

### The Čehovice landscape, Prostějov district in Moravia, Regional Land Office Prostějov



The landscape of Čehovice results from a project of territorial ecological rehabilitation, aimed at reversing the major transformations of the landscape brought about by the reassignment of plots of land after the Second World War. The landscape was unable to retain water, which in turn led to a decrease in biodiversity and an increased risk of erosion and flooding. In order to combat these problems, a project of land consolidation was launched which involved restoring rural roads, natural vegetation and various other natural and historical elements. To achieve ecological stability, a biocentre with bio corridors was developed, along with the creation of a wetland, the planting of various trees and the reintroduction of species of vegetation that had disappeared. Due to the extensive renovation work conducted on these badly exploited lands, the area now boasts an array of birdlife, from wild ducks to herons. The water table has been stabilised, and there is no longer a risk of drought in the dry seasons. For the local population, the “green island” has become an oasis for recreation, and school children can visit the area to learn more about their landscape.

The Committee of Ministers of the Council of Europe recognised the great value of the project: it is a fine example of the successful rehabilitation of a degraded area, revitalising the area’s biodiversity, for the benefit of the local economy and the well-being of the population.



© Esa Aalto



## **The management of endangered traditional biotopes and the preservation of the traditional rural landscape, Finnish Association for Nature Conservation**

The project aims to manage endangered traditional biotopes and preserve the traditional rural landscape. This landscape is among the most diverse and the most threatened in Finland, taking into account that 28% of the endangered species live there. A large number of volunteers, about 500 people, have been involved in the project, producing a wide landscape diversity in three years. The landscapes include semi-natural dry or mesic grasslands and also Baltic coast zones. Traditional methods are used in these zones such as: reaping, hay-harvesting, tree-clearing and creating pastures for livestock. The outcome has been very positive: many of the endangered species have spread into these new rural areas and the aesthetic appeal of the rural landscape has been improved. Beyond the objective of protecting the areas, the project also played a vital role in terms of informing and educating the public about the importance and the value of traditional landscapes and their management. Volunteers have helped those involved to become more aware of their own ability to improve the quality of landscapes and has led to an increased respect for their environment.



The Committee of Ministers of the Council of Europe recognised the great value of the project, considering it a fine example of the regeneration of a living traditional landscape, rich in biological diversity, and implemented with the greatest respect for the environment and landscape values.



© Gérard Dufresne

### **The Port aux Cerises open air leisure centre,** Joint Committee for Investigation, Planning and Management of the Port aux Cerises Outdoor Leisure Centre



The Port aux Cerises open air leisure centre covers 160 hectares and receives more than 1 million visitors each year. The area was recovered from hosting a waste pile in the 1960s, and was converted into an urban natural space with a focus on equality and to increase the quality of life. The reason for its great success is that the people who were to actually use it were consulted in the planning phase as to their needs and desires. It hosts a wide variety of activities designed to let the visitors escape from the urban environment. It is under constant change and construction and not one part is left to chance but the land is moulded in order to exactly suit its purpose and the aspirations of the users. The leisure centre offers a wide variety of recreational activities, each catering for individual desires but also following the centre's general theme. The facilities on offer include swimming pools and a mini-train to allow visitors to move about the area easily.

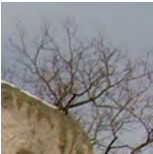
The Committee of Ministers of the Council of Europe recognised the great value of the project: considering it a fine example of the successful planning of a degraded landscape and of its adaptation to the changing times for the well-being and quality of life of the population.



© Gábor Kiss

## The traditional stone culture of the Bükkalja landscape, Beehive Rock Nature Conservation and Cultural Association

The project in the Bükk National Park is designed to maintain and preserve the traditional stone culture of the Bükkalja landscape with its characteristic beehive rocks. A review of the landscape was conducted with the aim of producing a database of the valuable features of the landscape which will underpin the preparation of a legislative framework to protect the rocks. Through this, 72 beehive rocks have been identified and examined as well as marked with their exact GPS co-ordinates, thus preventing their locations from being lost in the future. Apart from the purely archival task of the project, an extensive effort has been made to rehabilitate the rocks.



The project included eliminating invasive species, such as the locust tree, and introducing indigenous species, such as oak, maple and fruit-bearing trees. The clearing of the rock formations has rendered them easily accessible and highly visible which, aided by nature trails with informative signs, has made the region an important tourist attraction. The local population is able to better appreciate their landscape for ecotourism. Moreover, the re-creation of this traditional landscape has inspired the local population to take good care of and value these remarkable rocks.

The Committee of Ministers of the Council of Europe recognised the great value of the project: it constitutes an exemplary achievement based on the validation of geological heritage, which has enabled the re-creation of a traditional landscape supported by new socio-economic forces, benefiting the local population.





### The Dutch Landscape Manifesto, Foundation Landscape Manifesto



The landscape manifesto project was designed to highlight the importance of the landscape and to improve the quality of the Dutch landscape. The Foundation Landscape Manifesto proves a strong force for “landscape enlightenment”, through promoting the involvement of citizens, an exchange of knowledge between organisations, improving the quality of landscape planning, as well as an analysis of the current maintenance tools, searching for sustainable financing within the government. Forty-seven organisations collaborate to raise awareness and co-ordinate efforts to support landscape maintenance. Through reuniting a group of non-governmental organisations with different objectives, but all sharing the same concern for the landscape, the Foundation Landscape Manifesto has managed to increase the authorities’ and the public’s awareness of landscape. This step creates a force which uniformly works to implement the European Landscape Convention by whatever tools are at its disposal, whether this means improving landscape policies or “Landscaping your courtyard” campaigns.

The Committee of Ministers of the Council of Europe recognised the great value of the project: it is an exemplary project which enables the sharing of expertise, the awareness and mobilisation of citizens, in order to support the sustainable territorial development of the landscape.



© Ane Bysheim



### The Herand Landscape Park, County Government of Hordaland

Herand is a small village in rural Norway with a population of 230 people. It is a typical place which was threatened by waves of rural depopulation and farm closure, which has happened in the Norwegian countryside over recent years. However, this village managed to make use of its magnificent landscape as a resource for attracting domestic and international tourists. Instead of facing decline, it has an increasing population and wealth, which is supported by the production of local foods and crafts, developed to boost the already fully fledged geotourism. Working in conjunction with the appeal of the natural, cultural and historic landscape, additional activities, such as lodging, skiing, hiking and fishing, enhance the tourist appeal of the area. Old, unused buildings have been converted to fulfil a new purpose. The local population is deeply involved in this project and actively participates to enhance the village, as its livelihood depends on it to a large extent, and also because its very identity is at stake.



The Committee of Ministers of the Council of Europe recognised the great value of the project: it is a fine example of a citizen's initiative, deriving from the inhabitants of a rural village who took care to make use of their history and traditions in a dynamic perspective.



© Dejan Mitić

**The landscape of Backi Monostor village,**  
 “Podunav” Backi Monostor

The village of Backi Monostor is located on the outskirts of the Gornje Podunavlje Special Nature Reserve that is host to a number of preserved indigenous biotopes which harbour a rich flora and fauna. It is close to the Croatian and Hungarian borders and the village is a place of multi-ethnicity where different cultural expressions are promoted and are a part of the unique environment which makes Backi Monostor attractive to tourists. These features are encouraged where actions are taken to increase its attractiveness. Old houses are rehabilitated through traditional methods, and become “ethno houses” and old crafts are taught to young people, so that they can be employed in their home village as well as provide support for the blossoming tourist industry. The flood plains are not only a resource for tourism but also play a more direct role in the socio-economic welfare of the region. They provide drinking water, flood protection and sustainable forestry and fisheries. For this reason, workshops and seminars are regularly held for adults and children to give them first-hand knowledge of landscape management. An increasing number of young people have since chosen to remain in the area to be proud representatives and promoters of their village to visitors.



The candidature was presented by Serbia as Signatory State of the European Landscape Convention and, on 28 June 2011, Serbia ratified the convention. The Committee of Ministers of the Council of Europe recognised the great value of the project: it constitutes a fine example of a citizen’s initiative, deriving from the inhabitants of a rural village who took care to make use of their history and traditions in a dynamic perspective.



© Petra Vertelj Nared

### “We are making our landscape”, Slovenian Association of Landscape Architects



The project “We are making our landscape” was established in order to disseminate information about landscapes in the period just after the European Landscape Convention entered into force in Slovenia. In order to achieve this goal, it intended to change the way that people perceive landscape. The project focused on education, and through education changing how people experience and relate to their environment. Through teaching workshops and training, the project promoted landscape awareness in children as well as in adults, taking into consideration that our lifestyle and our attitude towards the environment directly influence the landscape where we live. An art and photography competition was held among primary schools and kindergartens, which encouraged the children to become aware of their surroundings. This competition involved an exhibition and several prizes were awarded which encouraged awareness of, and reflection on, landscape. Through education, the project validated long-term benefits, such as sustainable development and the reinforcement of measures tending to achieve as well as maintain quality landscapes.

The Committee of Ministers of the Council of Europe recognised the great value of the project: it is an innovative and exemplary project of educational promotion, and awareness-raising in young people from an early age, highlighting the importance of a sustainable territorial development of the landscape.



## **3rd Session 2012-2013**





## Presentation

Eighteen projects were presented by the States Parties to the European Landscape Convention<sup>1</sup> to the Secretary General of the Council of Europe on the occasion of the 3rd Session 2012-2013 of the Landscape Award of the Council of Europe.

On 12 December 2013, the Committee of Ministers of the Council of Europe<sup>2</sup> decided, in accordance with the Resolution of the Committee of Ministers CM/Res(2008)3 on the rules governing the Landscape Award of the Council of Europe, and on the recommendations of the jury and of the Committee of experts responsible for monitoring the implementation of the Convention, to:

1. confer the Landscape Award of the Council of Europe's European Landscape Convention for the 3rd Session of the Award 2012-2013 to the achievement:

### **Preserving ecological value in the landscape of the Szprotawa River Valley, Lower Silesian Association of Landscape Parks, Poland**

The project on preserving ecological value in the landscape of the Szprotawa river valley is the winner of the 3rd Session of the Council of Europe Landscape Award 2012-2013 considering that it meets the four criteria of the rules on the Landscape Award. The integrated approach goes beyond the single dimension of biodiversity and associates nature with culture and population. Thus the project offers a model that others might follow. It shows a good level of participation by the parties concerned in both decision-making and land management. The farmers and beekeepers are stakeholders; the project has also enabled apparently conflicting economic interests to be reconciled. The aesthetic dimension is present and enables the awareness of different generations to be raised effectively. The environment is also taken into consideration: the project relates to the rehabilitation of a former Soviet military base, as well as to increased use of biomass as a source of energy.

The involvement of Roma in the decision-making process and, in future, in the management of the restored land is particularly favourable. In dealing with the issue of minority populations and their involvement in land management, this project represents progress in "living together" at European level, which should be applauded;

---

1. See Appendix 1.

2. See Appendix 2.

2. confer identical special mentions of the Landscape Award of the Council of Europe's European Landscape Convention for the 3rd Session of the Award 2012-2013 to the three following achievements:

**The rebirth of the Alto Belice Corleonese region through the recovery of lands confiscated from the mafia organisations, LIBERA, Associations, names and numbers against mafias, Italy**  
*Special Mention for "Strengthening democracy"*

The project of the revival of Alto Belice Corleonese relates to the recovery of land from mafia organisations, which was illegally seized by them. This project of great interest encompasses a combination of the Council of Europe's principles: human rights, rule of law and democracy. Landscape is both the instrument and the result. The project is as much political as economic, and produces a landscape which highlights the local identity and culture. It restores the cultural dimension of the landscape and the quality of the natural environment. Organic production and local processing of farm products, the development of renewable energies and the restoration of the heritage all provide job opportunities for vulnerable populations. The outstanding level of volunteer mobilisation is one of the project's strong points;

**"U-parks, U-turns we love", Utena district Municipality, Lithuania**

*Special Mention for "Giving attention to the urban landscape as a common good"*

The "U-parks. U-turn we love" project for the reclamation of a public park network in urban areas is of great interest because it counterbalances the wave of land privatisation that followed the end of the Soviet era. Here public land regains its importance and can be enjoyed by everyone on a daily basis. This system of urban parks is a fine exercise in landscape planning as applied to individual and collective well-being. The landscape is regarded as a common good, enabling participatory practice to be developed. This achievement undeniably has a sustainable development dimension. The involvement of the landscape architects' association and the use of parks as teaching areas for future professionals is particularly interesting;

**The Gate of Gornje Podunavlje, NGO Podunav, Backi Monostor, Serbia**

*Special Mention for "Contributing to European ideals"*

The location of the "Gate of Gornje Podunavlje" project on the banks of the Danube in the historic region of Backi Monostor has enabled some particularly interesting cross-border and multi-ethnic objectives to be pursued. The attention given to the Serb, Croat, Hungarian, Roma and Šokci heritages with a view to a shared European identity was particularly appreciated. This project reflects a public commitment to better economic and social well-being and, at the same time, to the preservation of the character of the landscapes. Within a UNESCO Biosphere Reserve, this project takes a well-adapted integrated approach. The development of cross-border ecotourism,

in conjunction with a return to agricultural production geared to traditional diets, is helping to reduce the number of young people leaving the countryside;

3. acknowledges the great value of each project presented for the 3rd Session 2012-2013 of the Landscape Award of the Council of Europe's European Landscape Convention and make them well known to the general public as a source of inspiration:

**Hoge Kempen National Park, Regionaal Landschap Kempen en Maasland vzw, Belgium**

Hoge Kempen National Park uses an integrated approach which enables greater coherence and defragmentation in an area from which the mining industry has departed and gives it new impetus. The park, adjacent to a garden city, remains faithful to the principles of such cities, fostering co-operation and stimulating the parties concerned. This project is intended to increase public interest in the protection and enhancement of this landscape;

**Environmental education in the town of Strakonice year by year or "Pilgrimage through the Contemplative Landscape", Municipality of Strakonice, Czech Republic**

The environmental education project of the town of Strakonice, a national pilot project, is an on-going process of an enduring nature, one which takes account of previous management. It brings all generations together through a series of "thematic cycles" referring to the intangible values of the places concerned (history and legend, poetry, painting, folk arts...) in order to give a better description of the landscape and "give it a soul". The growing awareness of the sense of belonging to a "European" landscape is interesting. Active public participation in the restoration and maintenance of "small" heritage was appreciated;

**The Landscape Projects of Hyypä Valley, City of Kauhajoki, Hyypä village Association, Finnish Forestry Centre/Public Services, Unit of South and Central Ostrobothnia, Finland**

The Hyypä Valley landscape projects involve a wide variety of players. The public is viewed on the same level as the public authorities and is involved in the definition of objectives, implementation of activities and monitoring of the results achieved. The strong point of this achievement is the deep involvement of both volunteers and the national forestry department in the activities. The projects carried out have helped to highlight the value of landscapes and to promote the social and aesthetic values of the communities concerned;

**Grand Pré Park, City of Langueux, France**

The Grand Pré Park occupies 12 hectares between an urban and a natural landscape. It is therefore a convivial place restoring its coherence to a fragmented area of land. It opens up links with the surrounding villages and spaces. This park is suitable for many recreational uses and offers an opportunity to engage in educational activity to promote sustainable development. The

aim of the project is to express a new urban quality, and it has altered the “workers’ dormitory” image of Languieux. It strives to offer areas where it is easy for people to meet, irrespective of their social background.

**Complex Landscape Rehabilitation and Development Programme in the Gerecse Mountains and the Által Creek Valley, Association for the Restoration and Development of the Által Creek Valley (Tata), Hungary**

The long-term complex landscape rehabilitation and development programme in the Gerecse Mountains and the Által Creek Valley, carried out by a non-governmental organisation, combines protection of the environment with responsible tourism. Through a comprehensive approach, a former mining site has been rehabilitated and damaged ecosystems restored. The involvement of numerous – public and private – partners has made an everyday landscape extraordinary, conducive to the development of ecotourism. The landscape has been planned in line with the European Landscape Convention. This simultaneously environmental and social project has enabled the public to return to former practices. The high level of participation and quality of governance were appreciated;

**Bere Island Conservation Plan, The Heritage Council and the Bere Island Project Group, Ireland**

The Bere Island Conservation Plan is a sound plan representing an exemplary approach and fulfilling all the criteria for the Council of Europe Landscape Award, particularly where public participation and awareness-raising are concerned. It involves various participants (local people, universities in the framework of the Erasmus programme, the army, etc.). The project brings nature and the economy together and offers waste management solutions. It is subject to integrated management using the resources available, and is linked to every sector of island life. It has resulted in stabilisation of the island’s population. The depopulation of rural areas is a problem on a European scale. This project has the right dimension and sets a useful example;

**Dzintari Forest Park, Jurmala City Council, Latvia**

The Committee of Ministers of the Council of Europe recognised the great value of the project. Dzintari Forest Park aims to preserve a natural enclave of 13 hectares in the city centre. This planning of the urban landscape for recreational and leisure purposes has successfully made room at this site to accommodate pedestrians and skateboarders. The development of democratic processes to satisfy public aspirations in terms of quality of the environment is greatly appreciated;

**Planning policy for conservation and sustainable development of 20 national landscapes in the Netherlands, Stichting Nationale Landschappen (NGO), the Netherlands**

The planning policy for conservation and sustainable development of 20 national landscapes in the Netherlands covers a significant expanse of exceptional landscapes considered to be

representative of the Netherlands. The identification of such landscapes is certainly within the scope of the European Landscape Convention;

**Furnas Landscape Laboratory (Furnas LandLab), Azores Regional Directorate of the Environment, Portugal**

The Furnas Landscape Laboratory represents an example of good practice which will be useful to other countries. The regaining of water quality, return to a kind of agriculture more respectful of the natural substrate and the eradication of invasive species are the project's strong points. The project, which certainly corresponds to the spirit of the European Landscape Convention, gives off a feeling of high energy. Activities seem to be on a huge scale and will require numerous resources, provided by many volunteers and, to some extent, European Structural Funds;

**Agricultural Development and Environmental Protection in Transylvania, Agricultural Development and Environmental Protection Foundation (ADEPT), Romania**

The project on Agricultural Development and Environmental Protection in Transylvania is of interest as it combines economics and ecology. The aim is to perpetuate an agricultural system which promotes biodiversity. The approach adopted presents a level of integration which deserves expansion. The ADEPT Foundation has involved several participants and brought national and European, public and private partners into action. Ultimately, this project should be able to incorporate landscape quality objectives;

**Salvage, revival and operation of the forest railway in the landscape of Cierny Balog, Ciernohronska zeleznica NGO, Slovak Republic**

The salvage, revival and operation of the forest railway in the landscape of Cierny Balog project concerns the highlighting of a technical aspect of the heritage, the forest railway of Cierny Balog. The involvement of 1,500 volunteers was appreciated. The magnificent Carpathian landscape forms the backdrop;

**Landscape and water-management restoration of Škocjanski Zatok nature reserve, DOPPS, BirdLife Slovenia, Slovenia**

The landscape and water-management restoration project relating to Škocjanski Zatok nature reserve concerns a coastal wetland. Thanks to the project, urban and industrial sprawl have been successfully halted, something very important in this limited coastal area. Managed by BirdLife Slovenia, the project benefited from significant national and European Union (LIFE) support, without which it would be impossible to curb urban and industrial pressure. It clearly shows public participation in the planning process and a good level of public awareness. The planning process incorporates nature protection and attention to the landscape;

**The sustainable revitalisation of the protected landscape of Geria, Consortium for the defence and promotion of the landscape of Geria, Spain**

This project relates to an outstanding landscape with few equivalents in Europe. The landscape can be maintained only through stubborn human effort without mechanical assistance. The revitalisation of this site, which has UNESCO Biosphere Reserve status, is the outcome of a rigorous approach combining environment, aesthetics and economics. Not only is wine-growing viable, it also creates jobs. The decision to engage in sustainable agri-tourism is helping to revitalise the landscape. Public participation is strong at every level of decision making, and awareness is raised of all aspects of landscape and environment;

**South Pennines Watershed Landscape Project, Pennine Prospects, United Kingdom**

Located close to major cities, the South Pennines Watershed Landscape Project fully meets the Landscape Award criteria and complies with the provisions of the European Landscape Convention. This area is made available to many and varied urban populations. The complex project is representative of the long and sound tradition of integrated work on the landscape in the United Kingdom. It represents a textbook example of public awareness-raising. Landscape planning is a process which necessitates constant efforts and investments. The progress made needs to be consolidated and continued on an on-going basis. The many participants in this project are encouraged to develop it further.





© Lower Silesian Association of Landscape Parks



## Preserving ecological value in the landscape of the Szprotawa River Valley,

Lower Silesian Association of Landscape Parks

The project allowed the promotion of the following: conservation of plant communities classified as *Molinion* and *Arrhenatherion elatioris*; conversion of a former Soviet airbase into wetland meadows covering 500 hectares; implementation of measures to raise and maintain groundwater level at the protected site; preservation of traditional land management practices on the protected site (polders); re-establishment of nesting grounds for aquatic and wetland birds; removal of Soviet military earthworks; suspension of the planting of weeping willows; establishment of an eco-agricultural programme and grazing by cattle, sheep and horses; re-establishment of the use of meadows for pasture to preserve low peat bogs; long-term vocational activity among the Roma population to counter poverty and exclusion; preservation of bird sanctuaries for species listed in Appendix I of the Birds Directive and in the Polish Red Book; conversion of the heating system from traditional coal-based to eco-friendly biomass-based in the headquarters of the Lower Silesian Association of Landscape Parks and in the village of Wysoka.

The Committee of Ministers of the Council of Europe conferred the Landscape Award of the Council of Europe's European Landscape Convention for the 3rd Session of the Award 2013-2014 on the organisers of the project, considering that it meets the four criteria of the rules on the Award. The integrated approach goes beyond the single dimension of biodiversity and associates nature with culture and population. Thus the project offers a model that others might follow. It shows a good level of participation by the parties concerned in both decision-making and land management. The farmers and beekeepers are stakeholders; the project has also enabled apparently conflicting economic interests to be reconciled. The aesthetic dimension is present and enables the awareness of different generations to be raised effectively. The environment is also taken into consideration: the project relates to the rehabilitation of a former Soviet military base, as well as to increased use of biomass as a source of energy. The involvement of Roma in the decision-making process and, in future, in the management of the restored land is particularly favourable. In dealing with the issue of minority populations and their involvement in land management, this project represents progress in "living together" at European level which should be applauded.





© LIBERA, Associations, names and numbers against mafias

## The rebirth of the Alto Belice Corleonese region through the recovery of lands confiscated from the mafia organisations,

LIBERA, Associations, names and numbers against mafias

Libera's mission is to regain liberated lands which were illegally seized by mafia organisations, starting with the creation and empowerment of social, independent and rural co-operatives. Located in these lands, they are able to sustainably manage their business activities, thus contributing to the creation of induced employment, as well as spreading a virtuous economic system. This project determines the enhancement of landscape, culture, local identity, material and immaterial heritage based on legality, social justice and responsible and sustainable tourism. The "Placido Rizzotto-Libera Terra Co-operative" was the first initiative of this kind in the region of Alto Belice Corleonese. This project concerned the recovery of an area of more than 500 hectares confiscated by mafia organisations which had been illegally seized by them and abandoned for many years, as well as rural buildings and historically relevant manor farms. Libera has promoted a recovery and requalification action on these assets, focusing particularly on the enhancement in terms of nature maintenance and protection, and rural and landscape recovery.



The Committee of Ministers of the Council of Europe conferred a special mention of the Landscape Award of the Council of Europe's European Landscape Convention for the 3rd Session 2012-2013 for "Strengthening democracy" to the project of the revival of Alto Belice Corleonese that relates to the recovery of land from mafia organisations, which was illegally seized by them. This project of great interest encompasses a combination of the Council of Europe's principles: human rights, rule of law and democracy. Landscape is both the instrument and the result. The project is as much political as economic, and produces a landscape which highlights the local identity and culture. It restores the cultural dimension of the landscape and the quality of the natural environment. Organic production and local processing of farm products, the development of renewable energies and the restoration of the heritage all provide job opportunities for vulnerable populations. The outstanding level of volunteer mobilisation is one of the project's strong points.



© Utena District Municipality

## “U-parks, U-turns we love”, Utena district Municipality

Utena is the tenth-largest town in Lithuania with a population of 34,000 (2012). Between 1960 and 1990 this industrial town was endowed with a living landscape preserving nature (a system of rivers, lakes and valleys) over an area of 140 hectares. Continued systems of preserved natural areas are ecologically important, but their aesthetic and recreational functions were not recognised. Between 1990 and 1998 the State embarked on a process of private property restoration and land privatisation. The municipality made great efforts to save these areas as public spaces. Combining the protection and management of the unique landscape to gain the recreational potential of the area, Utena District Municipality developed city gardens in the town centre (2005), the banks of the Krašuona River in a densely built-up residential area (2009), and the Dauniškis (2005) and the Vyžuona (2010) parks which are now large central recreational areas (total area 50 hectares).



The Committee of Ministers of the Council of Europe conferred a special mention of the Landscape Award of the Council of Europe's European Landscape Convention for the 3rd Session 2012-2013, for “Giving attention to the urban landscape as a common good” to the authors of the project for its great value in favour of democracy. This project is of great interest because it counterbalances the wave of land privatisation that followed the end of the Soviet era. Here, public land regains its importance and can be enjoyed by everyone on a daily basis since its reclamation of a public park network in urban areas. This system of urban parks is a fine exercise in landscape planning as applied to individual and collective well-being. The landscape is regarded as a common good, enabling participatory practice to be developed. This achievement undeniably has a sustainable development dimension. The involvement of the Landscape Architects' Association and the use of parks as “teaching areas” for future professionals is particularly interesting.





© Srđan Čižovački

## The Gate of Gornje Podunavlje, NGO Podunav, Backi Monostor

The main goal of the project is the sustainable development of the entire region through ecotourism and rural tourism development, which includes the engagement of the whole local community, bringing social and economic well-being through nature and landscape preservation. The connection of local culture and historic heritage that is in harmony with nature, and its promotion as an ecotourist and rural tourist destination, provides a social, cultural and aesthetic sustainability. That also provides a chance for a new quality development through new ways of preserving nature and traditions and new jobs for local people. The project is a partnership between local and regional institutions, including the non-governmental and civil sector – that is, the local community.



The Committee of Ministers of the Council of Europe conferred a special mention of the Landscape Award of the Council of Europe's European Landscape Convention for the 3rd Session 2012-2013 for "Contributing to European ideals" to the authors of the project for bringing attention to the urban landscape as a common good. The location of the "Gate of Gornje Podunavlje" project on the banks of the Danube in the historic region of Backi Monostor has enabled some particularly interesting cross-border and multi-ethnic objectives to be pursued. The attention given to the Serb, Croat, Hungarian, Roma and Šokci heritages with a view to a shared European identity was particularly appreciated. This project reflects a public commitment to better economic and social well-being and, at the same time, to the preservation of the character of the landscapes. Within a UNESCO Biosphere Reserve, this project takes a well-adapted integrated approach. The development of cross-border ecotourism, in conjunction with a return to agricultural production geared to traditional diets, is helping reduce the numbers of young people leaving the countryside.



© Regionaal Landschap Kempen en Maasland vzw



## Hoge Kempen National Park, Regionaal Landschap Kempen en Maasland vzw

In the early 1990s, the situation in the Hoge Kempen region was as follows: its four coalmines were on the point of closing and the landscape was intersected by roads and fragmented, due to poor spatial planning. Several smaller nature reserves existed in the area but were separated from each other. The creation of the Hoge Kempen National Park (started in 1998 and opened in 2006) turned this trend around. It is the framework that brings together every stakeholder or involved party. It is the tool for spatial and visual unification of the several nature reserves into a combined heathland and forest area of 5,700 hectares. It is also a means of combining local economic activities and the chance of employment for socially vulnerable people, the blossoming of biodiversity, integrated landscape quality and sustainable tourism. It is a supported bottom-up approach.



The Committee of Ministers of the Council of Europe recognised the great value of the project. Hoge Kempen National Park uses an integrated approach which enables greater coherence and defragmentation in an area from which the mining industry has departed, and gives it new impetus. The park, adjacent to a garden city, remains faithful to the principles of such cities, fostering co-operation and stimulating the parties concerned. This project is intended to increase public interest in the protection and enhancement of this landscape.



© Municipality of Strakonice

### Environmental education in the town of Strakonice year by year or “Pilgrimage through the Contemplative Landscape”, Municipality of Strakonice

The nominated educational project of the town of Strakonice is a set of inter-related one-year thematic cycles focusing on the landscapes of the Strakonice, Blatná and Vodňany districts. Each sub-project demonstrates the uniqueness of the landscape in a natural, cultural and historical context and the way to read and understand the history of the region. In the complex approach of sustainable development it explains the need for protection and functional management of landscapes as a mutually interlinked and influenced setting. Through its comprehensive nature, the project increases general awareness about the South Bohemia region and helps people to gain a healthy self-confidence and respect for the place where they were born and where they live. Every thematic cycle is accompanied by a quotation from the book “The Contemplative Landscape” (*Země zamyšlená*), written by a local artist Ladislav Stehlík (1st edition, 1947). Comparisons between this text, which is over 50 years old, and the situation today provide an inspirational view of the development of the landscapes of South Bohemia.



The Committee of Ministers of the Council of Europe recognised the great value of the project. The environmental education project of the town of Strakonice, a national pilot project, is an on-going process of an enduring nature, one which takes account of previous management. It brings all generations together through a series of “thematic cycles” referring to the intangible values of the places concerned (history and legend, poetry, painting, folk arts...) in order to give a better description of the landscape and “give it a soul”. The growing awareness of the sense of belonging to a “European” landscape is interesting. Active public participation in the restoration and maintenance of “small” heritage was appreciated.



© Hyyppä Village Association

### **The Landscape Projects of Hyypä Valley, City of Kauhajoki, Hyypä Village Association, Finnish Forestry Centre/Public Services, Unit of South and Central Ostrobothnia**

The authors of the projects have implemented major and long-term landscape maintenance. The base project, entitled “The Establishment of the Hyypä Valley Landscape Conservation Area”, led to the following achievement: a Preservation Plan, including definitions of the special landscape features and values, and numerous illustrated instructions for preservation actions. Co-operation and several confidence-building measures were developed among the 1,200 landowners and villagers, the local municipality, regional and state authorities, specialist organisations, enterprises, international volunteers and local associations. 41.5 hectares of landscape maintenance operations have also been implemented and permanent action groups for landscape maintenance and a discussion forum for villagers, associations and authorities have been established. Finally, a Landscape Conservation Area in Hyypä, founded by the Ministry of Environment in the autumn of 2009, has been given juridical status.



The Committee of Ministers of the Council of Europe recognised the great value of the project. The actions developed in the Hyypä Valley for landscape involve a wide variety of players. The public is treated on the same level as the public authorities and citizens are involved in the definition of objectives, implementation of activities and monitoring of the results achieved. The strong point of this achievement is the deep involvement in the activities of both volunteers and the national forestry department. The projects carried out have helped highlight the value of landscapes and to promote the social and aesthetic values of the communities concerned.





© Alexandre Petzold

## The Grand Pré Park, City of Langueux

A contemporary park in the small town of Langueux, Grand Pré links the town centre with Saint Brieuc and the wide horizons of the Yffignac Bay. The project creates a strong, friendly place that features elegant views in a new urbanity. The town, fragmented by suburban housing, has a new urban quality. This is expressed on the one hand through a social project, which gives importance to a public space that generates diversity and exchanges between people and, on the other, through composed views and materials that recreate the visual relationship with the surrounding landscape and landmarks. Grand Pré Park became the new centre of attraction of a town in the making.



The Committee of Ministers of the Council of Europe recognised the great value of the project. The Grand Pré Park occupies 12 hectares between an urban and a natural landscape. It is therefore a convivial place restoring its coherence to a fragmented area of land. It opens up links with the surrounding villages and spaces. This park is suitable for many recreational uses and offers an opportunity to engage in educational activity to promote sustainable development. The aim of the project is to express a new urban quality, and it has altered the “workers’ dormitory” image of Langueux. It strives to offer areas where it is easy for people to meet, irrespective of their social background.



© Péter Csonka



### The Complex Landscape Rehabilitation and Development Programme in the Gerecse Mountains and the Által Creek Valley,

Association for the Restoration and Development of the Által Creek Valley (Tata)

The Association for the Restoration and Development of the Által Creek Valley was established in 1995 in order to promote the preservation and sustainable utilisation of the environment and rich natural/cultural heritage of the Által Creek Valley, a former industrial site struggling with numerous environmental challenges. Following its initial efforts that were aimed at protecting water quality, the association made its activities more complex in 2002 when it decided to embark on the complex rehabilitation and development of the Gerecse Mountains and the Által Creek Valley on the basis of ecological considerations. An outstanding achievement is the creation of the Gerecse Nature Park based on the sustainable use of natural/cultural heritage and born out of the joint action of 29 communities in the region and other affected organisations. The association, whose members are local, performed all operations from planning to implementation in a systematic manner and with the involvement of other stakeholders.



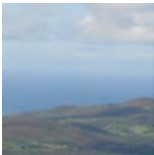
The Committee of Ministers of the Council of Europe recognised the great value of the project. The long-term complex landscape rehabilitation and development programme in the Gerecse Mountains and the Által Creek Valley, carried out by a non-governmental organisation, combines protection of the environment with responsible tourism. Through a comprehensive approach, a former mining site has been rehabilitated and damaged ecosystems restored. The involvement of numerous – public and private – partners has made an everyday landscape extraordinary, conducive to the development of ecotourism. The landscape has been planned in line with the European Landscape Convention. This simultaneously environmental and social project has enabled the public to return to former practices. The high level of participation and quality of governance were appreciated.



© Heritage Council

## The Bere Island Conservation Plan, The Heritage Council and the Bere Island Project Group

The aim of the Bere Island Conservation Plan is to shape the sustainable future of the island. It demonstrates the value of a landscape approach to island management. In line with the European Landscape Convention, the conservation plan was developed with the full involvement of the Bere Islanders, who were proactive in developing strategies to protect and manage their landscape. It has resulted in a series of projects inspired by its vision, informing and shaping policy at the regional, national and European levels. The Conservation Plan has also become a model of best practice for other European islands.



The Committee of Ministers of the Council of Europe recognised the great value of the project. The Bere Island Conservation Plan is a sound plan representing an exemplary approach and fulfilling all the criteria for the Council of Europe Landscape Award, particularly where public participation and awareness-raising are concerned. It involves various participants (local people, universities in the framework of the Erasmus programme, the army, etc.). The project brings nature and the economy together and offers waste management solutions. It is subject to integrated management using the resources available, and is linked to every sector of island life. While the depopulation of rural areas is a problem on a European scale, it has precisely resulted in stabilisation of the island's population. This project has the right dimension and sets a useful example.



© Ojārs Martinsons

## The Dzintari Forest Park, Jurmala City Council

Jurmala's Dzintari Forest Park is unique due to its location, because its 13-hectare natural enclave is located in the centre of the city of Jurmala. The park's greatest assets are 200-year-old pine tree groves and habitats, which are preserved intact, notwithstanding the rapid development of surrounding areas. The construction of public structures around this area of nature significantly increased the number of visitors before the construction of the park. This increase in traffic might have degraded the park landscape in the city centre. For that reason the idea was to arrange the natural landscape according to the new situation and incorporate nature into a city infrastructure and preserve natural and different aspects of the territory. The wild look which the Forest Park preserves makes it a place for recreation and holidays to be enjoyed by all. The infrastructure objects in the park are evenly distributed along all the park territory. Its infrastructure elements allow people to move around above ground by means of an elevated wood-plank walkway. The most important active recreation element is a roller-blade path, which is located in centre of the park. Skaters and pedestrians are separated by a pedestrian bridge. Within the park there are also skateboard parks, street-ball courts, a sightseeing tower and playgrounds.



The Committee of Ministers of the Council of Europe recognised the great value of the project. Dzintari Forest Park aims to preserve a natural enclave of 13 hectares in the city centre. This planning of the urban landscape for recreational and leisure purposes has successfully made room at this site to accommodate pedestrians and skateboarders. The development of democratic processes to satisfy public aspirations in terms of quality of the environment is greatly appreciated.



© Stichting Nationale Landschappen

### Planning policy for conservation and sustainable development of 20 national landscapes in the Netherlands, Stichting Nationale Landschappen (NGO)

Since 2006, local and regional organisations have joined forces to protect landscape qualities and stimulate sustainable development in the 20 most valuable cultural landscapes in the Netherlands. Much has been invested in improving recreational facilities and accessibility and in raising public awareness. The project was initiated and financially supported in the first few years by the national government. Recently a new non-governmental organisation has been formed to secure protection and management in the future and improve co-operation of all parties involved, including local and regional authorities and private investors. This organisation (*Stichting Nationale Landschappen*) is a non-profit foundation with an executive office of its own (*Servicenet Nationale Landschappen*). New projects were set up and new ways of financing were organised.



The Committee of Ministers of the Council of Europe recognised the great value of the project. The planning policy for conservation and sustainable development of 20 national landscapes covers a significant expanse of exceptional landscapes considered to be representative of the Netherlands. The identification of such landscapes is certainly within the scope of the European Landscape Convention.





© Filipe G. Teixeira



### The Furnas Landscape Laboratory (Furnas LandLab), Azores Regional Directorate of the Environment

The intensification of dairy farming in recent decades has led to the eutrophication of Furnas Lake. Therefore, to restore its water quality, a legally binding Furnas Watershed Plan was adopted in order to effect a major change in soil use. It was the turning point in the landscape management and economic activities of the last few decades. Since 2007, about 300 hectares of agricultural land within the watershed were bought by the Government of the Azores, which enabled the management team to implement an ambitious plan. Furnas Landscape Laboratory, a future multifunctional forest landscape, was created to act as a large experimental ground, the first of its type in the Azores, to implement new ecological restoration techniques, economic activities and management practices, promoting a widespread public involvement, to achieve sustainability at all levels (ecologic, economic, social, cultural and aesthetic). There have been many concrete achievements since 2007 and the project is on-going with no end date.



The Committee of Ministers of the Council of Europe recognised the great value of the project. The Furnas Landscape Laboratory represents an example of good practice which will be useful to other States. The regaining of water quality, return to a kind of agriculture more respectful of the natural substrate and the eradication of invasive species are the project's strong points. The project, which certainly corresponds to the spirit of the European Landscape Convention, gives off a feeling of high energy. Activities were on a huge scale and required numerous resources, provided by many volunteers and, to some extent, European Structural Funds.



© ADEPT Foundation

## Agricultural Development and Environmental Protection in Transylvania,

Agricultural Development and Environmental Protection Foundation (ADEPT)

The project of the Agricultural Development and Environmental Protection Foundation (ADEPT) was implemented in the period between May 2006 and March 2009, financed under the Darwin Initiative and co-financed by Orange Romania and the UK Government (Defra). The project was initiated in the Târnava Mare area as a response to the threats to the semi-natural landscapes in Southern Transylvania which stemmed both from land abandonment and agriculture intensification as well as from lack of recognition. The goal was to facilitate the conservation and traditional management of the Târnava Mare semi-natural landscape, while increasing local benefits through the sustainable use of ecosystems. The project met its targets and developed a wider significance, with an impact on national and EU policy towards High Nature Value Farmland (HNVF) areas.



The Committee of Ministers of the Council of Europe recognised the great value of the project. This project on Agricultural Development and Environmental Protection in Transylvania is of interest as it combines economics and ecology. The aim is to perpetuate an agricultural system which promotes biodiversity. The approach adopted presents a level of integration which would deserve to be increased. The ADEPT Foundation has involved several participants and brought national and European, public and private partners into action. Ultimately, this project should be able to incorporate landscape quality objectives.



© Slovak Environmental Agency

### Salvage, revival and operation of the forest railway in the landscape of Cierny Balog,

Ciernohronska zeleznica NGO

The project “Salvage, Revival and Operation of the Forest Railway in the Landscape of Cierny Balog” won the Landscape Award of the Slovak Republic 2012 for bringing the people back to their landscape through the revival of a technical monument, for restoring the identity of Cierny Balog Region and for retaining its cultural heritage. The project is an exemplary model of how people can really make a positive change to a decaying landscape through the bottom-up approach. A large number of enthusiasts and volunteers, local citizens, as well as invited experts, have renewed the original vision by combining their enthusiasm, wisdom, memory, efforts, time, expertise, money, planning abilities, and management skills. The object was the purpose and the operation of the historic forest railway, which was facing destruction because of an arbitrary official decision that was taken last century. The people were able to persuade everybody that the forest railway adds value to their landscape as a main artery of their region. The forest railway, a symbol of sustainable wood-cutting practice of previous generations in the region, today represents the living historic form of the landscape, which has contributed significantly to the characteristic appearance, new life opportunities, prosperity and reputation of the Cierny Hron Valley in Slovakia.



The Committee of Ministers of the Council of Europe recognised the great value of the project. The salvage, revival and operation of the forest railway in the landscape of Cierny Balog project concerns the highlighting of a technical aspect of the heritage, the forest railway of Cierny Balog. The involvement of 1,500 volunteers was appreciated. The magnificent Carpathian landscape forms the backdrop.





© Borut Mozetic/DOPPS – BirdLife Slovenia

### The Landscape and water-management restoration of Škocjanski Zatok nature reserve, DOPPS, BirdLife Slovenia

The project aimed to recreate the typical coastal wetland landscape of Škocjanski Zatok Nature Reserve, the largest brackish wetland in Slovenia, after the decay it suffered in the 1980s. This resulted in the restoration of the semi-natural coastal wetland ecosystem, landscape and its natural processes. It thus remedied the environmental problems of the past, and assured the conservation and development of the typical brackish and freshwater habitats supporting fauna and flora of European and national importance with a strong exemplary value, as well as the organisation of the wetland centre – a nature reserve open to the public. Visitors from within Slovenia and elsewhere can now enjoy the area for education, recreation and a unique nature experience. Awareness was raised in the local community, which participated in the project with a positive attitude – this also contributed to a better quality of life and the sustainable development of the Slovenian coast.



The Committee of Ministers of the Council of Europe recognised the great value of the project. This landscape and water-management restoration project relating to Škocjanski Zatok nature reserve concerns a coastal wetland. Thanks to the project, urban and industrial sprawl have been successfully halted, something very important in this limited coastal area. Managed by BirdLife Slovenia, the project has benefited from significant national and European Union (LIFE) support, without which it would be impossible to curb urban and industrial pressure. It clearly shows public participation in the planning process and a good level of public awareness. The planning process incorporates nature protection and attention to the landscape.



*© Consortium for the defence and promotion of the landscape of Geria*



## The sustainable revitalisation of the protected landscape of Geria, Consortium for the defence and promotion of the landscape of Geria

Geria is an exceptional volcanic farmland for its outstanding landscape and heritage values. It is exemplary for the combination of human intervention and environmental sustainability. The area went into decline in the late twentieth century due to the expansion of the service economy that has adversely affected agriculture on the island of Lanzarote. To reverse this trend, public and private participants have tried to create a new framework and have implemented actions to achieve a new appreciation of its unique history and its economic opportunities. A campaign to raise awareness of the revitalisation of the area's heritage, innovation in the field of food and wine, active tourism and land rehabilitation are all ways of preserving an agricultural system which is the only one of its kind in the world.



The Committee of Ministers of the Council of Europe recognised the great value of the project. This project relates to an outstanding landscape with few equivalents in Europe. The landscape can be maintained only through stubborn human effort without mechanical assistance. The revitalisation of this site, which has UNESCO Biosphere Reserve status, is the outcome of a rigorous approach combining environment, aesthetics and economics. Not only is wine-growing viable, it also creates jobs. The decision to engage in sustainable agri-tourism is helping to revitalise the landscape. Public participation is strong at every level of decision making, and awareness is raised of all aspects of landscape and environment.



© Steve Morgan/Pennine Prospects

### The South Pennines Watershed Landscape Project, Pennine Prospects

The South Pennines Watershed Landscape Project seeks to tell the story of the landscape in terms of both the historic and the natural environment. More than a million people live in or around the South Pennine uplands, located between Leeds and Manchester, yet the site can still feel remote, wild and exhilarating. Its unique landscape has been an inspiration to artists and writers from the Brontës to Ted Hughes. There are significant pressures – for example, the peat resources are in the front line of the battle to mitigate climate change. Engaging local communities through projects based on science, archaeology and creative arts has improved understanding of the value of the landscape. Pennine Prospects, a rural regeneration non-government organisation, worked with volunteers and provided training to enable more people to be directly involved in caring for this fragile landscape.



The Committee of Ministers of the Council of Europe recognised the great value of the project. Located close to major cities, the South Pennines Watershed Landscape Project fully meets the Landscape Award criteria and complies with the provisions of the European Landscape Convention. This area is made available to many and varied urban populations. The complex project is representative of the long and sound tradition of integrated work on the landscape in the United Kingdom. It represents a textbook example of public awareness-raising. Landscape planning is a process which necessitates constant efforts and investments. The progress made needs to be consolidated and continued on an on-going basis. The many participants in this project are encouraged to develop it further.



## **4th Session 2014-2015**



## Presentation

Twelve projects were presented by the States' Parties to the European Landscape Convention<sup>1</sup> to the Secretary General of the Council of Europe, on the occasion of the 4th Session 2014-2015 of the Landscape Award of the Council of Europe.

On 14 October 2015, the Committee of Ministers of the Council of Europe<sup>2</sup> decided, in accordance with the Resolution of the Committee of Ministers CM/Res(2008)3 on the rules governing the Landscape Award of the Council of Europe, and on the recommendations of the jury and of the Committee of experts responsible for monitoring the implementation of the Convention, to:

1. confer the Landscape Award of the Council of Europe's European Landscape Convention for the 4th Session of the Award 2014-2015 to:

**The borderless co-operation of local communities for the landscape heritage of the “Fabulous” Hetés, the villages of Bódeháza, Gáborjánháza, Szijártóháza and Zalasombatfa (Hungary), the villages of Genterovci, Kamovci, Radmožanci, Žitkovci, Mostje, Banuta (Slovenia), Greenways Methodology Association and the Iron Curtain Trail Association. Project presented by Hungary**

The project helped, through work on landscape, to restore and strengthen transfrontier relations between the two populations separated in the past by the Iron Curtain. The joint process of rehabilitation of the areas concerned has developed favourably, thanks to awareness-raising campaigns on the need to protect, manage and sustainably plan a shared and valuable landscape. Appropriate local resource mobilisation and encouragement of local village authorities to play a central role in policy dialogue are important features of the achievement. The significant and characteristic natural and historical features of the landscape were surveyed, identified, assessed and documented, with the participation of the population. Local knowledge was used to highlight the different opportunities and potential of the landscape – not only environmental and cultural but also social and economic – so that the populations and visitors have the opportunity to appreciate it. The establishment of fora, workshops and a common area called the “Friendship Park” has helped restore closer relations between the populations concerned. The creation of a cross-border network of greenways for walkers and cyclists is another symbolic element of the project. The most important added value of the project lies in the fact that, through the landscape, the people

---

1. See Appendix 1.

2. See Appendix 2.



of ten Hungarian and Slovenian villages have co-operated on both sides of the border for the quality of their surroundings, as defined in the European Landscape Convention. They have thus fulfilled the ideals and values promoted by the Council of Europe and, for this reason, the award was attributed to all the villages concerned, from both Hungary and Slovenia. The award was also attributed to the Greenways Methodology Association and to the Iron Curtain Trail Association, for the excellent work achieved.

2. confer identical special mentions for the 4th Session of the Landscape Award 2014-2015 of the Council of Europe's European Landscape Convention to the following achievements:

**The service tree, the tree of the Slovácko Region, Municipality of Tvarožná Lhota and NGO International Exchanges (INEX) – Voluntary Service of the White Carpathians, Czech Republic**

The project enabled the restoration of the cultural landscape of the Slovácko Region through the regeneration and promotion of the historical fruit tree species, the Service tree. Central to this effort is the participation of the local residents and community partners. The large and diverse number of activities emanating from this truly local project is a great example of how an idea can keep evolving. It demonstrates the power that awareness-raising campaigns, when supported by co-operation between local and regional authorities, can have for the restoration of a landscape, in a sustainable development perspective. Highlighting the contribution of traditional fruit tree species to the feature of landscapes in many territories, the project represents an important source of inspiration for promoting the protection of the traditional fruit trees' gene pool diversity. It thus becomes an excellent example of grass root efforts to mitigate the negative effects on globalisation of landscape, standardisation and market commercialisation of agriculture.

**Liptovská Teplička: protection of unique types of historical landscape, Village of Liptovská Teplička, Slovak Republic**

The project, jointly operated by the Agricultural Co-operative of Liptovská Teplička and the self-employed farmers of the village, made possible the preservation of a mountainous agricultural landscape with unique and significant features. The preservation of the character and functionality of this outstanding agricultural landscape has played a key role in the economic activity of the village, allowing it to remain inhabited despite its mountainous location, which renders access difficult. The combined use of traditional farming methods, still practised in the nearby village fields, and modern methods used on high altitude slopes, makes possible an efficient and sustainable practice of agriculture, respecting the history of these places. The preservation of innovative agricultural practices, and the efforts made by the ancestors of the villagers, is a source of inspiration for villages and small towns which wish to develop sustainably, by enhancing traditional landscapes.

### **The Sénia Territory Millennium Olive Tree Landscape, Taula del Sénia Mancomunidad, Spain**

The project enabled the conservation of the millennium olive trees and the management of the “sea of olive trees” landscape they created. The knowhow, traditional agricultural practices and the natural and cultural heritage for the cultivation of olive trees have thus also been preserved. The concerns expressed by the local population about the fate of some 4,800 ancient olive trees – threatened by economic pressures, speculation and classified as “at risk” – has led the authors of the project to establish a partnership between local and regional administrations, individuals and enterprises. This strong co-operation between the public and private sectors has led, through restoration and sustainable territorial management, to the protection of the olive trees and the preservation of an exceptionally characteristic landscape. Awareness-raising initiatives have helped strengthen the understanding of stakeholders of the inestimable value of these historic trees. Favourable economic prospects have also resulted. This achievement is thus a major source of inspiration for the traditional Mediterranean landscape of olive groves.

3. acknowledge and praise the great value of the other projects presented for the 4th Session of 2014-2015 of the Landscape Award of the Council of Europe’s European Landscape Convention, and to recommend making them well-known to the general public for their exemplary value, and as sources of inspiration:

### **The enhancement of the natural site and landscape of Hof ter Musschen, Commission on the Environment of Brussels and its environs ASBL, Belgium**

The project has helped preserve an ancient rural landscape threatened for years by the urbanisation of the surrounding areas. Playing a key role in the sustainable development policy in the region, it owes its existence to the initiative of residents eager to save the Hof ter Musschen and to protect its important landscape values, both historical and biological. Since 1990, the Commission on the Environment of Brussels and its environs, in partnership with local and regional actors, has supported the sustainable management of the site and conducts awareness-raising campaigns among the school population and the general public. The outstanding achievements and actions performed will thus help protect, manage and plan the landscape for the benefit of present generations and pass it on to future generations.

### **The Ecomuseum Blaca Hermitage, Cultural Centre of Brač, Croatia**

Because of its great cultural value, the Ecomuseum Blaca Hermitage, a former monastic settlement, has powerfully strengthened local sustainability and inhabitants’ sense of belonging to a place. The measures taken to facilitate access to the site during its renovation led to the

development of walking trails and bike paths, allowing the enjoyment of the landscape. The project is thus a particularly positive experience of enhancement of a landscape surrounding a historical monument.

### **Development of the historical centre of Agios Athanasios Municipality, Municipality of Agios Athanasios, Cyprus**

The main aim of the project, central to the municipality's sustainable development policy, made possible the improvement of citizens' quality of life through the renovation of the municipality's historic centre. Some of the major interventions led to improved safety of the road network in the area and the provision of a pleasant space with useful amenities for both young and old to enjoy. A lively public discussion took place around the project design to enable the public to take ownership and build consensus on which plans to adopt. The public use of the new central place attests to the effectiveness of collaboration in improving urban landscapes.

### **The “Bull by the Horns”: grazing in nature and landscape management, Centre for Economic Development, Transport and the Environment for Central Finland, Finland**

The project provides landscape management to guide the development of highly valuable natural areas across a number of regions. It includes a wide variety of partners (authorities, associations and citizens) and has forged co-operation networks. These steps have led owners of valuable sites to make agreements with grazing livestock owners and to management arrangements being established for more than 200 hectares of threatened traditional rural biotopes. Operations aimed at preventing overgrowth and subsequent degradation of landscapes have also been conducted. The project demonstrates the importance of involving all stakeholders concerned, and notably local people, in the appropriate management of the landscape and in their commitment to carry on the aims of a project, even after termination of its initial financing.

### **The Agricultural Park of Paduli, Open Urban Laboratory, Italy**

The rural project, led by the local communities, associations and inhabitants, made possible the creation of a multifunctional rural park allowing the restoration of the largely abandoned olive grove. The aim was to develop new methods to care for the land and to enhance the landscape's value in the minds of the local population. A collaborative work, co-ordinated by the “Open Urban Laboratory”, involved the local stakeholders and a large number of experts from Italy. Using a bottom-up approach, the project has raised new awareness of the landscape's value in its inhabitants and persuaded young people to practise innovative management activities.

**The town of Kuldīga in the Venta Valley: preserving a unique landscape for future generations, Kuldīga Municipality, Latvia**

The project has promoted the image of the city of Kuldīga in the Venta Valley. The work done by the municipality, with the support of local and European partners and appropriate planning and management, thus enhanced an exceptional landscape. Depollution and cleaning of the river and its banks contributed to the preservation of the natural and cultural values of the urban landscape. As a result, the quality of life of the local population and the ties that bind them to their city have been strengthened.

**The New Dutch Waterline, Board of the New Dutch Waterline, the Netherlands**

The project has transformed a military line of defence, stretching a total of 85 kilometres, into a quality landscape highly valued by the population and visitors. It provides for multiple activities, including agriculture, leisure and tourism. The project is a very interesting and innovative example of landscape restoration by the reinstatement of old abandoned military structures and preservation of historical and cultural heritage.

**Biodiversity and natural resources management in the Camili Basin, Camili Environmental Protection and Development Association, Turkey**

As a result of the project, an inter-sectoral, participatory and sustainable management plan has been prepared and is being implemented. Training, education and awareness-raising programmes have also been carried out for local people and schoolchildren. In addition, technical and financial assistance have been provided to involve the local population in landscape-related projects, offering new economic prospects. The project illustrates how the precautionary management of natural resources and biodiversity contributes positively to enhancing the landscape, which is considered an essential component of people's surroundings.



© Andrea Bedò

## HUNGARY

### The Borderless co-operation of local communities for the landscape heritage of the “Fabulous” Hetés,

The villages of Bödeháza, Gáborjánháza, Szijártóháza, Zalasombatfa (Hungary), the villages of Genterovci, Kamovci, Radmožanci, Žitkovci, Mostje, Banuta (Slovenia), Greenways Methodology Association and the Iron Curtain Trail Association

Ten villages located on the Hungarian-Slovenian border were involved in a programme for this area of the former Iron Curtain, a key aspect of which was a pilot project, implemented between 2013-2014, for the protection and sustainable management of the landscape. The programme aimed to restore the links between the populations on both sides of the border and to promote enhancement of the area concerned. The historical and natural features of the landscape were identified and analysed with the participation of local authorities. The appeal to the knowledge of populations revealed the richness of the landscape and its components, both natural and cultural. A network of greenways for walkers and cyclists was also established to enable the local population, visitors and tourists to discover the landscape's richness.

The Committee of Ministers of the Council of Europe conferred the Landscape Award of the Council of Europe's European Landscape Convention for the 4th Session of the Award 2014-2015 to the organisers of the project. Won by the Hungarian villages of Bödeháza, Gáborjánháza, Szijártóháza and Zalasombatfa, and the Slovenian villages of Genterovci, Kamovci, Radmožanci, Žitkovci, Mostje and Banuta, with the support of the Greenways Methodology Association and the Iron Curtain Trail Association, the project helped, through work on landscape, to restore and strengthen transfrontier relations between the two populations separated in the past by the Iron Curtain. The joint process of rehabilitation of the areas concerned has developed favourably, thanks to awareness-raising campaigns on the need to protect, manage and sustainably plan a shared and valuable landscape. Appropriate local resource mobilisation and encouragement of local village authorities to play a central role in policy dialogue are important features of the achievement. The significant and characteristic natural and historical features of the landscape were surveyed, identified, assessed and documented, with the participation of the population. Local knowledge was used to highlight the different opportunities and potential of the landscape – not only environmental and cultural but also social and economic – so that the populations and visitors have the opportunity to appreciate it. The establishment of fora, workshops and a common area called the “Friendship Park” has helped restore closer relations between the populations concerned. The creation of a cross-border network of greenways for walkers and cyclists is another symbolic element of the project.



The most important added value of the project lies in the fact that, through the landscape, the people of ten Hungarian and Slovenian villages have co-operated on both sides of the border for the quality of their surroundings, as defined in the European Landscape Convention. They have thus fulfilled the ideals and values promoted by the Council of Europe and, for this reason, the award was attributed to all the villages concerned, from both Hungary and Slovenia. The award was also attributed to the Greenways Methodology Association and to the Iron Curtain Trail Association for the excellent work achieved.







© Vít Hrdoušek

### The service tree, the tree of the Slovácko Region, Municipality of Tvarožná Lhota and NGO International Exchanges (INEX) – Voluntary Service of the White Carpathians

The project aimed to restore the cultural landscape of the Slovácko region, focusing on the cultivation, dissemination and promotion of traditional fruit trees, and in particular the service tree (*Sorbus domestica*), with the participation of local authorities and people of the region, often volunteers. It has revealed the importance of this species, which had almost fallen into oblivion, but which had economic importance in the past and was also an outstanding characteristic feature of the regional landscape. The project made it possible to co-ordinate the rescue of species of ancient fruit trees, particularly the service tree, by appealing to the participation of residents, local and regional authorities and other partners. Several achievements have been completed: a Service Tree Museum, educational trails and an arboretum were built; a gene pool was created from rare fruit trees and old fruit trees were treated. Seedlings were obtained and grown, and then trees were planted within the network of the regional system of ecological stability (an essential part of a green infrastructure in the Czech Republic). More than 100 villages of the Slovácko Region – the traditional seat of the service tree – have subsequently followed this approach.



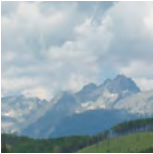
The Committee of Ministers of the Council of Europe conferred a special mention of the Landscape Award of the Council of Europe's European Landscape Convention for the 4th Session of the Award 2014-2015 on the organisers of the project. It enabled the restoration of the cultural landscape of the Slovácko Region through the regeneration and promotion of the historical fruit tree species, the Service tree. Central to this effort is the participation of the local residents and community partners. The large and diverse number of activities emanating from this truly local project is a great example of how an idea can keep evolving. It demonstrates the power that awareness-raising campaigns, when supported by co-operation between local and regional authorities, can have for the restoration of a landscape, in a sustainable development perspective. Highlighting the contribution of traditional fruit tree species to the feature of landscapes in many territories, the project represents an important source of inspiration for promoting the protection of the traditional fruit trees' gene pool diversity. It thus becomes an excellent example of grass root efforts to mitigate the negative effects on globalisation of landscape, standardisation and market commercialisation of agriculture.



© Lucia Vačková

### Liptovská Teplička: protection of unique historical landscape types, Village of Liptovská Teplička

The project aims to preserve specific features of the village of Liptovská Teplička and its habitat and the character of the local landscape, which is a mountainous agricultural area, as part of a type of unique historical landscape in the Carpathian Mountains. In the first half of the 17th century, local people cleared the surrounding forest to build a system of narrow terraced fields, which today cover an area of 350 hectares around the village. There are also the unique historical parts of the settlement, with a set of preserved wooden farm buildings, barns, and a total of 419 potato cellars that still perform their original function. The municipality of the village has been developing a long-term effort to preserve the original character and functionality of the landscape. These activities bring benefits to the population in terms of the preservation of its cultural and historic values. The project promotes the maintenance of ecological balance, strengthens local identity and boosts the local economy through the promotion of sustainable tourism, respecting people and their surroundings.



The Committee of Ministers of the Council of Europe conferred a special mention of the Landscape Award of the Council of Europe's European Landscape Convention for the 4th Session of the Award 2014-2015 on the organisers of the project. The project, jointly operated by the Agricultural Co-operative of Liptovská Teplička and the self-employed farmers of the village, made possible the preservation of a mountainous agricultural landscape with unique and significant features. The preservation of the character and functionality of this outstanding agricultural landscape has played a key role in the economic activity of the village, allowing it to remain inhabited despite its mountainous location, which renders access difficult. The combined use of traditional farming methods, still practised in the nearby village fields, and modern methods used on high altitude slopes, makes possible an efficient and sustainable practice of agriculture, respecting the history of these places. The preservation of innovative agricultural practices, and the efforts made by the ancestors of the villagers, is a source of inspiration for villages and small towns which wish to develop sustainably, by enhancing traditional landscapes.





© José Barea

## The Sénia Territory Millennium Olive Tree Landscape, Taula del Sénia Mancomunidad

Besides geography, history, language and culture, it is the preservation of some 4,800 millenary olive trees – with trunk circumferences of more than 3.5 metres at 1.30 metres above the ground – that characterises and gives unity to the territory of Sénia. Almost all of these trees are of the Farga variety, probably the oldest cultivated variety in the world, with high quality oil but with a low production capacity. They are part of a traditional olive tree landscape, known as the “sea of olive trees”. This landscape, in which traditional agricultural activities are carried out, consists of terraced fields, dry stone constructions, and unique flora and fauna, and offers an outstanding example of the interaction between natural and human factors. The programmes implemented to strengthen the intrinsic value of ancient olive trees and landscape helped achieve positive results through the collaboration of public and private sectors.



The Committee of Ministers of the Council of Europe conferred a special mention of the Landscape Award of the Council of Europe's European Landscape Convention for the 4th Session of the Award 2014-2015 on the organisers of the project. It enabled the conservation of the millennium olive trees and the management of the “sea of olive trees” landscape they created. The know-how, traditional agricultural practices and the natural and cultural heritage for the cultivation of olive trees have thus also been preserved. The concerns expressed by the local population about the fate of some 4,800 ancient olive trees – threatened by economic pressures, speculation and classified as “at risk” – has led the authors of the project to establish a partnership between local and regional administrations, individuals and enterprises. This strong co-operation between the public and private sectors has led, through restoration and sustainable territorial management, to the protection of the olive trees and the preservation of an exceptionally characteristic landscape. Awareness-raising initiatives have helped strengthen the understanding of stakeholders of the inestimable value of these historic trees. Favourable economic prospects have also resulted. This achievement is thus a major source of inspiration for the traditional Mediterranean landscape of olive groves.





© CEBE – Geneviève Vermoelen

## The enhancement of the natural site and landscape of Hof ter Musschen,

Commission on the environment of Brussels and its environs ASBL

The Hof ter Musschen project aimed to preserve, enhance and animate an old rural and typical landscape to the east of Brussels. Located just outside the regional territory, this site of high biological and landscape value is composed of a farm, wet meadows, reed beds, wooded areas, wastelands, orchards and a mill. Part of a 17th century Brabant farm, Hof ter Musschen ceased agricultural activities in 1979. It is bordered to the south by the Woluwe River, and by a main road heading towards the city. Threatened both by the extension of the St. Luc University campus and urbanisation, the Hof ter Musschen project has been a true fight for citizens to safeguard and protect its historical and biological values. Since 1990, the Brussels Committee on the Environment and Surroundings Association, ASBL, in partnership with local and regional stakeholders, has ensured sustainable management of the landscape, organising scientific-level study days as well as awareness-raising actions: rehabilitation of the bakery, mowing, osier beds, beekeeping, school activities and guided tours. These activities have helped revive the landscape and for it to evolve favourably.



The Committee of Ministers of the Council of Europe acknowledged and praised the great value of the project presented for the 4th Session 2014-2015 of the Landscape Award of the Council of Europe's European Landscape Convention and recommended making it well-known to the general public for its exemplary value, and as a source of inspiration. The project has helped preserve an ancient rural landscape threatened for years by the urbanisation of the surrounding areas. Playing a key role in the sustainable development policy in the region, it owes its existence to the initiative of residents eager to save the Hof ter Musschen and to protect its important landscape values, both historical and biological. Since 1990, the Commission on the Environment of Brussels and its environs, in partnership with local and regional actors, has supported the sustainable management of the site and conducts awareness-raising campaigns among the school population and the general public. The outstanding achievements and actions performed will thus help protect, manage and plan the landscape for the benefit of present generations and pass it on to future generations.



© Kristijan Brkić

## Ecomuseum Blaca Hermitage, Cultural Centre of Brač

The project, which concerns the Ecomuseum Blaca Hermitage and its surrounding landscape, aimed to enhance a former monastic complex. Now a contemporary museum, it captures the local identity and immerses visitors in the local history and culture, allowing them to enjoy a landscape of exceptional aesthetic value. The Hermitage was built in the 16th century next to the caves in the cliffs in the isolated canyon on the southern side of Brač Island. Its great natural, cultural and aesthetic values were recognised by the island's people, local authorities and national institutions, all of which contributed to its inclusion in the national Tentative List for subsequent inclusion on the UNESCO List of World Heritage. The project serves as an outstanding example of sustainable heritage preservation in a region with the highest degree of landscape appreciation. Between 2007 and 2011 the complex was renovated and extensive interdisciplinary research has been carried out. The project is continuously improved upon with new curatorial programmes and restoration works.



The Committee of Ministers of the Council of Europe acknowledged and praised the great value of the project presented for the 4th Session 2014-2015 of the Landscape Award of the Council of Europe's European Landscape Convention and recommended making it well-known to the general public for its exemplary value, and as a source of inspiration. Because of its great cultural value, the Ecomuseum Blaca Hermitage, a former monastic settlement, has powerfully strengthened local sustainability and inhabitants' sense of belonging to a place. The measures taken to facilitate access to the site during its renovation led to the development of walking trails and bike paths, allowing the enjoyment of the landscape. The project is thus a particularly positive experience of enhancement of a landscape surrounding a historical monument.





© Costas Efthivoulou

## Development of the Historical Centre of Agios Athanasios Municipality, Municipality of Agios Athanasios

The project for the construction and re-planning of the central square of the Municipality of Agios Athanasios included a series of measures to improve the living conditions of the inhabitants. It was completed in three phases: the first phase was to divert the main road, as well as the construction of parking areas; the second phase included the construction of the new square for pedestrians which provides safe access to the Municipal Building for elderly and disabled people, a new children's play area and improved landscaping of the surrounding areas; the third phase included the restoration of old buildings in close proximity to the central square and the creation of a library, a municipal youth centre, an arcade and a folklore museum.



The Committee of Ministers of the Council of Europe acknowledged and praised the great value of the project presented for the 4th Session 2014-2015 of the Landscape Award of the Council of Europe's European Landscape Convention and recommended making it well-known to the general public for its exemplary value, and as a source of inspiration. The main aim of the project, central to the municipality's sustainable development policy, made possible the improvement of citizens' quality of life through the renovation of the municipality's historic centre. Some of the major interventions led to improved safety of the road network in the area and the provision of a pleasant space with useful amenities for both young and old to enjoy. A lively public discussion took place around the project design to enable the public to take ownership and build consensus on which plans to adopt. The public use of the new central place attests to the effectiveness of collaboration in improving urban landscapes.



© Tomi Aho/Agency for Rural Affairs



## The “Bull by the Horns”: grazing in nature and landscape management,

Centre for Economic Development, Transport and the Environment for Central Finland

The “Bull by the Horns” project organised landscape management for areas that are particularly valuable in terms of ecology in the regions of Central Finland, South Savo, Pirkanmaa, Central Ostrobothnia and Ostrobothnia. This resulted in management arrangements being established for 220 hectares of threatened traditional rural biotopes, and the rare species contained therein. The project helped build networks of co-operation, through which landowners of valuable sites made grazing agreements with livestock owners. At the same time, efforts were made to prevent the harmful overgrowth of landscapes, and local people were encouraged to manage landscapes in the concerned area. Funding of management initiatives was provided by a special support fund under the agri-environmental aid agreements. The project was administered by the Centre for Economic Development, Transport and the Environment of Central Finland and a wide range of partners – including public authorities, associations and individuals – have participated in its realisation.



The Committee of Ministers of the Council of Europe acknowledged and praised the great value of the project presented for the 4th Session 2014-2015 of the Landscape Award of the Council of Europe’s European Landscape Convention and recommended making it well-known to the general public for its exemplary value, and as a source of inspiration. The project provides landscape management to guide the development of highly valuable natural areas across a number of regions. It includes a wide variety of partners (authorities, associations and citizens) and has forged co-operation networks. These steps have led owners of valuable sites to make agreements with grazing livestock owners and to management arrangements being established for more than 200 hectares of threatened traditional rural biotopes. Operations aimed at preventing overgrowth and subsequent degradation of landscapes, have also been conducted. The project demonstrates the importance of involving all stakeholders concerned, and notably local people, in the appropriate management of the landscape and in their commitment to carry on the aims of a project even after termination of its initial financing.



© "Lovo" – studio é cru, "il Nido" – LUA, "La Tana" – Yacine Benseddik

## Agricultural Park of Paduli, Open Urban Laboratory

In the far eastern strip of Italy there is, in the lands called the Middle Lands, an extensive and majestic centuries-old olive grove, named Paduli. The rural project, “Living the Paduli”, results from an idea involving local communities, associations and inhabitants in the development of a multifunctional rural park. Famous since the XVIIth century for the production of lamp oil which was used for street lighting in European capitals, the area later suffered from a persistent state of abandonment. It was an ideal place to experiment with new ways of caring for the environment, and activating new models of production. The “Open Urban Laboratory” brought together local stakeholders and a large number of experts from all over Italy to collaborate on the idea of creating a rural park. A bottom-up approach raised a new awareness of the landscape’s value. Through the Urban Workshop of the Middle Lands, “Living the Paduli” it has encouraged young people to practise innovative agricultural management techniques.



The Committee of Ministers of the Council of Europe acknowledged and praised the great value of the project presented for the 4th Session 2014-2015 of the Landscape Award of the Council of Europe’s European Landscape Convention and recommended making it well-known to the general public for its exemplary value, and as a source of inspiration. The rural project, led by the local communities, associations and inhabitants, made possible the creation of a multifunctional rural park allowing the restoration of the largely abandoned olive grove. The aim was to develop new methods to care for the land and to enhance the landscape’s value in the minds of the local population. A collaborative work, co-ordinated by the “Open Urban Laboratory”, involved the local stakeholders and a large number of experts from Italy. Using a bottom-up approach, the project has raised new awareness of the landscape’s value in its inhabitants and persuaded young people to practise innovative management activities.



© Artis Gustovskis

## The town of Kuldīga in the Venta Valley: preserving a unique landscape for future generations,

Kuldīga Municipality

The project illustrates the solutions adopted by the city of Kuldīga to promote and preserve its landscape, for the benefit of present and future generations. The exceptional value of the town results from the fact that it is a meeting point of nature and culture. Its centre, on the banks of the River Venta, is both the site of Natura 2000 and registered on the Tentative List of UNESCO. The project primarily aimed to improve the landscape and especially the ecological condition of the river, reducing pollution and conducting cleaning operations of its banks. It sought to restore and enhance the natural and cultural landscape of the city and increase public awareness. It contributed to the promotion of the image of the city and the Venta Valley as a landscape of great value.



The Committee of Ministers of the Council of Europe acknowledged and praised the great value of the project presented for the 4th Session 2014-2015 of the Landscape Award of the Council of Europe's European Landscape Convention and recommended making it well-known to the general public for its exemplary value, and as a source of inspiration. The project has promoted the image of the city of Kuldīga in the Venta Valley. The work done by the municipality, with the support of local and European partners and appropriate planning and management, thus enhanced an exceptional landscape. Depollution and cleaning of the river and its banks contributed to the preservation of the natural and cultural values of the urban landscape. As a result, the quality of life of the local population and the ties that bind them to their city have been strengthened.





© Marco van Middelkoop of the company Aerophoto-Schiphol

### National Project: New Dutch Waterline, Board of the New Dutch Waterline

The New Dutch Waterline is a military line of defence designed in 1815 to protect the economic and financial heart of the Netherlands. The concept of inviting water into the land, using subtle engineering techniques, originates from the 12th century. During the Second World War the concept of a waterline as defence system proved to be useless and was abandoned. The redevelopment of this unique cultural landscape, consisting of 60 fortresses, 5 fortified towns and over 1,500 smaller buildings, all located in the central part of the country, was announced by the government as a national project in 1999. The New Dutch Waterline was chosen because of its unique character and the complex spatial and administrative task required. In order to transform the New Dutch Waterline into an identifiable spatial entity, new functions – related to leisure, water management, agriculture, nature and commerce – were identified and developed.



The Committee of Ministers of the Council of Europe acknowledged and praised the great value of the project presented for the 4th Session 2014-2015 of the Landscape Award of the Council of Europe's European Landscape Convention and recommended making it well-known to the general public for its exemplary value, and as a source of inspiration. The project has transformed a military line of defence, stretching a total of 85 kilometres, into a quality landscape highly valued by the population and visitors. It provides for multiple activities, including agriculture, leisure and tourism. The project is a very interesting and innovative example of landscape restoration by the reinstatement of old abandoned military structures and preservation of historical and cultural heritage.





© Sitki Eraydn

## **Biodiversity and Natural Resources Management in the Camili Basin, Camili Environmental Protection and Development Association**

The Camili Basin was selected as one of the four pilot sites of the Biodiversity and Natural Resources Management Project which was implemented by the Camili Environmental Protection and Development Association, with the help of the Ministry of Environment and Forestry in collaboration with the World Bank and the support of the Global Environment Facility (GEF), from 2000 to 2008. Through the project, many activities such as policy and programmes, training and awareness-raising, implementation and monitoring, were realised. Within this context, a participatory management plan was prepared, and training and awareness-raising programmes were carried out for local people and schoolchildren. Local people were supported both technically and financially to develop alternative economic activities. In addition, a visitor centre and bird watching towers were constructed, and a local ecotourism and beekeeping committee was established. Collaboration with the project of the Turkish National Commission for UNESCO led the Camili Basin to join the World Biosphere Reserve Network in 2005.



The Committee of Ministers of the Council of Europe acknowledged and praised the great value of the project presented for the 4th Session 2014-2015 of the Landscape Award of the Council of Europe's European Landscape Convention and recommended making it well-known to the general public for its exemplary value, and as a source of inspiration. As a result of the project, an inter-sectoral, participatory and sustainable management plan has been prepared and is being implemented. Training, education and awareness-raising programmes have also been carried out for local people and schoolchildren. In addition, technical and financial assistance has been provided to involve the local population in landscape-related projects, offering new economic prospects. The project illustrates how the precautionary management of natural resources and biodiversity contributes positively to enhancing the landscape, which is considered an essential component of people's surroundings.



## **5th Session 2016-2017**



## Presentation

Thirteen projects were presented by the States' Parties to the European Landscape Convention<sup>1</sup> to the Secretary General of the Council of Europe, on the occasion of the 5th Session 2016-2017 of the Landscape Award of the Council of Europe.

On 27 September 2017, the Committee of Ministers of the Council of Europe<sup>2</sup> decided, in accordance with Resolution CM/Res(2008)3 on the rules governing the Landscape Award of the Council of Europe, and on the recommendation of the jury and of the Council of Europe Steering Committee responsible for monitoring the implementation of the Convention, to:

1. confer the Landscape Award of the Council of Europe's European Landscape Convention, for the 5th Session of the Award 2016-2017 on:

### **Regeneration of Daugavpils Fortress to Preserve Cultural and Historical Objects, Daugavpils City Council, Latvia**

#### *Award conferred for regeneration of a degraded symbolic landscape*

"Regeneration of Daugavpils Fortress to Preserve Cultural and Historical Objects" is a large-scale project which has helped people regain ownership of a highly symbolic landscape. It has enabled a new urban landscape to be created and has contributed to providing various services that are beneficial to public well-being.

2. confer identical special mentions of the Landscape Award of the Council of Europe's European Landscape Convention, for the 5th Session of the Award 2016-2017, on the following achievements:

### **The Hillside of the Citadel in Liège: 1999-2010. From an Enclosure to a Network, City of Liège, Belgium**

#### *Special mention for "Public participation"*

"The Hillside of the Citadel in Liège: 1999-2010. From an Enclosure to a Network" is a conservation and development project with public involvement, focusing on the redevelopment of an urban landscape composed of historical, cultural and natural heritage, and ensuring easier access to the site. From the outset, the project benefited from considerable public participation.

---

1. See Appendix 1.

2. See Appendix 2.



**Regeneration of the landscape and archaeological Park of the Valley of the Temples in Agrigento, Department of Cultural Heritage and Identity of Sicily, Italy**

*Special mention for “Sustainable development and social reintegration”*

“Regeneration of the landscape and archaeological Park of the Valley of the Temples in Agrigento” is an excellent example of a link between the enhancement of archaeological features recognised at international level and the development of an innovative agrarian economy, based on age-old knowledge. Using the restored access paths, both the local community and the many visitors may profit from this outstanding site, appreciating its landscape and the high quality of the local products.

**Alna Environmental Park: a blue-green corridor of biodiversity, recreational opportunities and sustainable urban water management, Municipality of Oslo, Agency for Urban Environment, Norway**

*Special mention for “Social cohesion and respect for the environment”*

“Alna Environmental Park: a blue-green corridor of biodiversity, recreational opportunities and sustainable urban water management” contributes to the quality of the living environment of a large urban population who have been involved in securing the future of a peri-urban landscape. This significant achievement integrates a demonstrably sustainable development dimension for the benefit of present and future generations’ well-being.

**Hriňovské lazy: landscape of values, Town of Hriňová, Slovak Republic**

*Special mention for “Preservation of a unique landscape under threat”*

“Hriňovské lazy: landscape of values” testifies to the ability of the local community to take in hand the destiny of an everyday landscape which offers breathtaking features. Its long narrow furlongs for cultivation are amongst the few remaining in Europe. The achievement links the fundamental dimensions of the landscape: cultural, economic, ecological and social.

3. acknowledge the great value of each project presented for the 5th Session 2016-2017 of the Landscape Award of the Council of Europe’s European Landscape Convention and make them well known to the general public as a source of inspiration:

**Management of the Madriu-Perafita-Claror Valley, included on the list of UNESCO World Heritage Sites in the Cultural Landscape Category, Madriu-Perafita-Claror Valley management plan steering committee, Andorra**

The project “Management of the Madriu-Perafita-Claror Valley, included on the list of UNESCO World Heritage Sites in the Cultural Landscape Category”, benefited from the exemplary involvement of the authorities and the local population who wished to promote a sustainable landscape, maintained by farming and tourism which respect the high-quality natural and cultural environment.

#### **Education of Children in Heavily Industrialised Landscapes, Elementary School in the city of Most, Czech Republic**

“Education of Children in Heavily Industrialised Landscapes” is an exemplary model of education and awareness-raising of pupils living in highly industrialised areas. The achievement makes it possible to develop a sense of belonging to a landscape and a responsible attitude towards the environment and future generations. Founded on awareness and active participation, this educational approach encourages children to act as citizens who care for the future of the landscape.

#### **“Shepherding Weeks”, Metsähallitus Parks and Wildlife Finland, Finland**

“Shepherding Weeks” is a remarkable project for the upkeep of a rural and woodland landscape. The commitment of citizens enables pastoral areas to be maintained, which is fundamental for the region’s ecological and agricultural future. This commitment is also essential to the preservation of traditional rural buildings, which contribute to the quality of the landscape.

#### **Landscape as a Link, Saint-Paul, La Réunion, France**

“Landscape as a Link” testifies to the ability of a group of institutions and citizens to optimise landscape integration of a road into the landscape within the specific context of the tropics, where biodiversity is magnified by climatic factors. The development carried out has contributed to the well-being of local residents and enables them to use the landscape in a manner in harmony with the abundance of nature.

#### **Developing “Water Codes” in Larissa City Centre: the “Sculpted River” of Larissa, Municipality of Larissa, Greece**

“Developing Water Codes in Larissa City Centre: the Sculpted River of Larissa” is an acknowledgment of the continuity of a landscape, from ancient times until today. The project provides keys to understanding the history of the area and fits into a territory “sculpted” by artistic practices which highlight the significance and role of water, essential in an urban setting. The city has regained its former distinction with a landscape that attests to the past, for the benefit of the residents’ quality of life.

**Landscape Development and Community Sample Programme for a Pleasant Village, Local Government of Mátraderecske, Roma Minority Local Government of Mátraderecske, Hungary**

“Landscape Development and Community Sample Programme for a Pleasant Village” is a positive example of landscape development and regional economic development. It has resulted in a return to traditional farming, population stabilisation and enhanced local viability.

**Protection and management of Zasavica Special Nature Reserve: a tool for sustainable development, Nature Conservation Movement of Sremska Mitrovica, Serbia**

“Protection and Management of Zasavica Special Nature Reserve: a Tool for Sustainable Development” has promoted the public’s awareness of natural habitats and its participation in initiatives to protect ecosystems and biodiversity in a way that is particularly favourable to the sustainable development of the rural environment.

**Landscape inventory of Galicia: public participation for landscape characterisation and planning, Institute of Land Studies, Ministry of Environment and Spatial Planning of the Government of Galicia, Spain**

“Landscape Inventory of Galicia: Public Participation for Landscape Characterisation and Planning” has seen strong public participation in a process of identifying and characterising landscapes with a view to developing a landscape atlas of the Galicia region. It is a decisive step towards the development of landscape action strategies.





*© Daugavpils City Council photo archive*

## Regeneration of Daugavpils Fortress to Preserve Cultural and Historical Objects, Daugavpils City Council

Daugavpils Fortress is the last 19th-century bastion-type fortification complex in Latvia in relatively good condition. After the Soviet Army left the fortress, the area (approximately 2 square km) was not used; it became an abandoned, degraded and unattractive space in the urban environment. The initiative of the local municipality was to define the territory of Daugavpils Fortress as a part of the city for development, including it in all planning documents. Several projects in the Fortress were successfully implemented as part of the Daugavpils City Development Programme “*Mana pils – Daugavpils*” (“My Castle – Daugavpils”), 2008-2014. All these factors created preconditions for the preservation and rational use of this urban monument of state significance as a unique cultural and historical heritage in its transformation into an administrative, cultural, recreational, business and tourism centre. Several initiatives were implemented: the restoration of the water tower to create the Daugavpils Fortress Cultural and Information Centre; reconstruction of the old Arsenal and improvement of the adjacent territory to create the Daugavpils Mark Rothko Art Centre; development of public infrastructure of the complex by improving streets and setting up technical engineering networks; and maintenance of the fortress ramparts.



The Committee of Ministers conferred the Landscape Award of the Council of Europe’s European Landscape Convention, for the 5th Session of the Award 2016-2017 to the organisers of the project. The Award was attributed for regeneration of a degraded symbolic landscape. “Regeneration of Daugavpils Fortress to Preserve Cultural and Historical Objects” is a large-scale project which has helped people regain ownership of a highly symbolic landscape. It has enabled a new urban landscape to be created and has contributed to providing various services that are beneficial to public well-being.



© Luc Gilson Light



**The Hillside of the Citadel in Liège: 1999-2010.**  
**From an Enclosure to a Network,**  
City of Liège



Lying on the edge of the historic city centre, the hillside of the Citadel covers approximately 86 hectares of the southern slopes of one of the steepest hills lining the Meuse valley. Hidden away in this extensive, uninterrupted ensemble of terraces, orchards, woods, paths and gardens is an outstanding heritage of almost 70 monuments and five listed sites. For almost 20 years, the public and the authorities have been working together to protect and enhance the whole area. The project has focused on confirming the public use of these outstanding sites, while conserving them and implementing innovative and integrated management methods. In 2010, a collection of 18 developed sites, linked by 13 kilometres of footpaths, was laid out and made available for tourists to discover this historic and natural heritage, and as a leisure area for city centre residents.

The Committee of Ministers conferred a special mention for “Public participation” of the Landscape Award of the Council of Europe’s European Landscape Convention, for the 5th Session of the Award 2016-2017 to the organisers of the project. “The Hillside of the Citadel in Liège: 1999-2010. From an Enclosure to a Network” is a conservation and development project with public involvement, focusing on the redevelopment of an urban landscape composed of historical, cultural and natural heritage, and ensuring easier access to the site. From the outset, the project benefited from considerable public participation.



© Giovanni Leto Barone-Eric Vandeville-Silvia Guerzoni

## Regeneration of the landscape and archaeological Park of the Valley of the Temples in Agrigento,

Archaeological and Landscape Park of the Valley of the Temples of Agrigento  
Department of Cultural Heritage and Identity of Sicily

The landscape regeneration project is the result of co-operation between public and private partners within the exceptional setting of the Valley of the Temples in Agrigento. Declared a UNESCO World Heritage site in 1997, the Valley of the Temples hosts one of the Mediterranean's major archaeological complexes, surrounded by an agricultural landscape of rare beauty, mainly composed of centenary olive and almond trees. To further the sustainable development of the park resources, park authorities have co-ordinated the actions of public and private partners, recreating high-quality traditional products and using ancient agronomic practices of Sicilian tradition. Their aim was to combine production, protection and enhancement of the territory, thanks also to the refurbishment of important infrastructure such as the old temples railway. The project thus combines knowledge, co-operation, development, protection and enhancement.



The Committee of Ministers conferred a special mention for “Sustainable development and social reintegration” of the Landscape Award of the Council of Europe’s European Landscape Convention, for the 5th Session of the Award 2016-2017 to the organisers of the project. “Regeneration of the Landscape and Archaeological Park of the Valley of the Temples in Agrigento” is an excellent example of a link between the enhancement of archaeological features recognised at international level and the development of an innovative agrarian economy, based on age-old knowledge. Using the restored access paths, both the local community and the many visitors may profit from this outstanding site, appreciating its landscape and the high quality of the local products.



© Eivind\_Röhne



### **Alna Environmental Park: a blue-green corridor of biodiversity, recreational opportunities and sustainable urban water management, Municipality of Oslo, Agency for Urban Environment**

In 2002, a report described how the Alna River and its surroundings could be enhanced and used in the revitalisation of the living environment in Groruddalen. The Alna River represents the defining topographical line through the Grorud Valley and the idea was to reinforce the Valley's blue-green structure by re-opening most of its watercourse. The underpinning idea was that of landscape ecology: an open, self-cleansing watercourse that has value as a recipient, is able to maintain ecological diversity, and is a recreational resource for the local population and the city in general. The project has transformed nearby residential and natural areas to an accessible park and recreation area, and has become an important social and health project in an area in need of good meeting places. The water has become a "natural magnet", and the Alna River has emerged as a living and vibrant waterway where people congregate and meet. The city council gave the project political recognition by adopting the Municipal Master Plan for the Alna Environmental Park in May 2013.



The Committee of Ministers conferred a special mention for "Social cohesion and respect for the environment" of the Landscape Award of the Council of Europe's European Landscape Convention, for the 5th Session of the Award 2016-2017 to the organisers of the project. "Alna Environmental Park: a blue-green corridor of biodiversity, recreational opportunities and sustainable urban water management" contributes to the quality of the living environment of a large urban population who have been involved in securing the future of a peri-urban landscape. This significant achievement integrates a demonstrably sustainable development dimension for the benefit of present and future generations' well-being.



© Lucia Vačoková

### Hriňovské lazy: landscape of values,

Town of Hriňová

The unique Hriňová landscape complex is an example of the interaction between man and landscape in the spirit of the European Landscape Convention. The project is aimed at preserving people's traditional way of life, which is in harmony with the landscape in various settlements, and creating the conditions for all stakeholders to co-operate in land management and local development. To this end, the town of Hriňová has taken various steps and implemented certain measures to conserve this unique landscape, and to preserve both its cultural and historical value and characteristic features with a system of historical agrarian landscape structures. The presence of the population, which is part of the landscape, is a necessary condition to maintain the lively, functional, authentic and prosperous landscape conveying a sense of identity.



The Committee of Ministers conferred a special mention for “Preservation of a unique landscape under threat” of the Landscape Award of the Council of Europe's European Landscape Convention, for the 5th Session of the Award 2016-2017 to the organisers of the project. “Hriňovské lazy: landscape of values” testifies to the ability of the local community to take in hand the destiny of an everyday landscape which offers breathtaking features. Its long narrow furlongs for cultivation are amongst the few remaining in Europe. The achievement links the fundamental dimensions of the landscape: cultural, economic, ecological and social.





© Susanna Simon

## **Management of the Madriu-Perafita-Claror Valley, included on the list of UNESCO World Heritage Sites in the Cultural Landscape Category, Madriu-Perafita-Claror Valley Management Plan Steering Committee**

The Madriu-Perafita-Claror valley is a unique example of cultural landscape. Sculpted by glaciers and shaped by human effort, the valley is a fine example of the full and outstanding splendour of nature and humankind working together. Covering an area of 4,247 hectares, it brings together the age-old achievements of the women and men of a very particular mountain country, Andorra. The main interest of the valley lies in the great density of both natural and cultural heritage assets in an excellent state of conservation. The very wide range of conditions and microclimates which result from the variations in altitude and aspect means that there is a great variety of soils, vegetation and, hence, landscapes, which contribute to the valley's great wealth of habitats, fauna and flora. As the last place in the country without a road, the Madriu-Perafita-Claror valley is home to a wide range of landscapes, which are preserved as the product of nature and the imprint left by humankind.



The Committee of Ministers acknowledged and praised the great value of each project presented for the 5th Session 2016-2017 of the Landscape Award of the Council of Europe's European Landscape Convention and recommended making it well-known to the general public for its exemplary value, and as a source of inspiration. The project "Management of the Madriu-Perafita-Claror Valley, included on the list of UNESCO World Heritage Sites in the Cultural Landscape Category" benefited from the exemplary involvement of the authorities and the local population who wished to promote a sustainable landscape, maintained by farming and tourism which respect the high-quality natural and cultural environment.

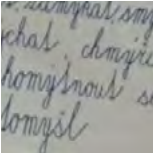
kyk. Pribyslav.  
k  
kyky. kyško. kyko.  
kyce. kyčnik.  
plyš  
kyky, kyško, kyko.  
kyce, kyčnik.  
kyky, kyško, kyko.  
kyce, kyčnik.  
kyky, kyško, kyko.  
kyce, kyčnik.



© Elementary School, Svážná, Most

### Education of Children in Heavily Industrialised Landscapes, Elementary School in the city of Most

The project involves the comprehensive, long-term approach of a school to educating children in heavily industrialised and completely transformed landscapes. The city of Most, where the school is situated, experienced a very difficult period in its history when, following a government decision in 1964 to prioritise surface coal mining, the town was, with the exception of a small part, entirely demolished. Its residents were relocated to the newly built town just a few hundred metres from the original municipality. The immediate landscape was badly affected by surface coal mining: much of the surrounding landscape was composed of large opencast mines and slag heaps (spoil tips). But it also included reclaimed and re-cultivated areas and newly created landscapes, home to the autodrome, hippodrome, aquadrome and aerodrome, as well as the Benedikt and Matylda recreational zones, which are the pride of Most. The elementary school teaches children to understand and solve environmental issues and to comprehend the interrelationship of the sustainable use of natural resources, the landscape and a healthy environment, and to see them in their historical context. The school also raises children's awareness of how they can contribute to the care of the landscape in which they live.



The Committee of Ministers acknowledged and praised the great value of each project presented for the 5th Session 2016-2017 of the Landscape Award of the Council of Europe's European Landscape Convention and recommended making it well-known to the general public for its exemplary value, and as a source of inspiration. "Education of Children in Heavily Industrialised Landscapes" is an exemplary model of education and awareness-raising of pupils living in highly industrialised areas. The achievement makes it possible to develop a sense of belonging to a landscape and a responsible attitude towards the environment and future generations. Founded on awareness and active participation, this educational approach encourages children to act as citizens who care for the future of the landscape.





© Pirjo Honkasalo

## “Shepherding Weeks”, Metsähallitus Parks and Wildlife Finland

The “Shepherding Weeks” project represents a unique concept that combines landscape management and an experience-rich holiday, developed by Metsähallitus Parks and Wildlife Finland’s Southern Finland regional unit in Koli National Park. During shepherding weeks, volunteer shepherds take care of a herd of sheep for a week, as they perform landscape management in national parks and conservation areas. The week is subject to a charge, in exchange for which the shepherds get to stay in an old house in the midst of breathtaking scenery. The payment is used to cover the costs of landscape management and the maintenance costs of the buildings in the area. The operations are organised in co-operation between Metsähallitus, volunteer shepherds and sheep farmers. Thanks to Shepherding Weeks, valuable traditional rural landscapes are maintained and public awareness of the importance of landscape has increased.



The Committee of Ministers acknowledged and praised the great value of each project presented for the 5th Session 2016-2017 of the Landscape Award of the Council of Europe’s European Landscape Convention and recommended making it well-known to the general public for its exemplary value, and as a source of inspiration. “Shepherding Weeks” is a remarkable project for the upkeep of a rural and woodland landscape. The commitment of citizens enables pastoral areas to be maintained, which is fundamental for the region’s ecological and agricultural future. This commitment is also essential to the preservation of traditional rural buildings, which contribute to the quality of the landscape.





© Agence Folléa-Gautier paysagistes-urbanistes

## Landscape as a Link, Saint-Paul, La Réunion, France

Further to the Western Landscape Plan, launched in the island of La Réunion by the central government in 1997, the community of municipalities of the west coast territory (covering an area of 53,000 hectares), drew up a Landscape Charter in 2007. The charter sets out landscape quality objectives based on a landscape development grid. The overall aim is the development of “breathing spaces” on the coastline and urban interface areas, between built-up areas and nature. In 2009, the community of municipalities finalised an inter-municipal development plan for urban interface areas. At the same time, the central government produced an atlas of landscapes in La Réunion, highlighting landscape issues. While these landscape policy tools were taking shape, the regional authority implemented a model approach to development by using the creation of the Route des Tamarins as a pilot project to promote other actions in favour of a quality landscape – especially along its particularly sensitive northern section, where a town surrounded by natural areas made up of wetlands and gorges (Saint-Paul) is followed by a headland including a savannah landscape that is also protected (Cap la Houssaye). In this context, the landscape project that was carried out over a 12-year period has both reinvented the urban interface area outside Saint-Paul and brought the savannah landscape of the headland to the fore as a natural breathing space for the population.



The Committee of Ministers acknowledged and praised the great value of each project presented for the 5th Session 2016-2017 of the Landscape Award of the Council of Europe’s European Landscape Convention and recommended making it well-known to the general public for its exemplary value, and as a source of inspiration. “Landscape as a Link” testifies to the ability of a group of institutions and citizens to optimise landscape integration of a road into the landscape within the specific context of the tropics, where biodiversity is magnified by climatic factors. The development carried out has contributed to the well-being of local residents and enables them to use the landscape in a manner in harmony with the abundance of nature.



© D. Kalapodas

## Developing “Water Codes” in Larissa City Centre: the “Sculpted River” of Larissa, Municipality of Larissa



The project, which gives the keys to understanding the territory’s history, aims to create a new landscape identity for the city of Larissa, based on the lost physical and historical landscape of a theatre dating back to the 3rd century BC, the remains of which were recently unearthed in the centre of the city. It will involve local communities and evoke memories of a distinctive agricultural landscape, such as the plain of Thessaly with the Pinios River and its surrounding mythical mountains. The urban sculptor Nella Golanda wanted to create a new identity for the city of Larissa, based on the ancient city theatre. In order to achieve these goals, she proposed a design for a “sculpted river”, a symbol of the lost link between the city and its river (Pinios) which emphasises the different landscapes of Thessaly, the uplands and the lowlands, along its route.

The Committee of Ministers acknowledged and praised the great value of each project presented for the 5th Session 2016-2017 of the Landscape Award of the Council of Europe’s European Landscape Convention and recommended making it well-known to the general public for its exemplary value, and as a source of inspiration. “Developing Water Codes in Larissa City Centre: the Sculpted River of Larissa” is an acknowledgment of the continuity of a landscape, from ancient times until today. The project provides keys to understanding the history of the area and fits into a territory “sculpted” by artistic practices which highlight the significance and role of water, essential in an urban setting. The city has regained its former distinction with a landscape that attests to the past, for the benefit of the residents’ quality of life.





© Somogyi-Toth Daniel

### Landscape Development and Community Sample Programme for a Pleasant Village,

Local Government of Mátraderecske, Roma Minority Local Government of Mátraderecske

The main focus of this programme is to use landscape as a territory that contributes to human well-being and as a resource for sustainable economic activity. Thanks to the potential of the landscape and its natural, cultural and historical assets, new regional opportunities have opened up: the preservation of existing jobs and the creation of new ones; a reliance on the strong solidarity of locals; the conservation of local Palóc traditions; the strengthening of the power of the local community and reinforcing its local identity by familiarising people with local cultural, historical and natural assets.



The Committee of Ministers acknowledged and praised the great value of each project presented for the 5th Session 2016-2017 of the Landscape Award of the Council of Europe's European Landscape Convention and recommended making it well-known to the general public for its exemplary value, and as a source of inspiration. "Landscape Development and Community Sample Programme for a Pleasant Village" is a positive example of landscape development and regional economic development. It has resulted in a return to traditional farming, population stabilisation and enhanced local viability.

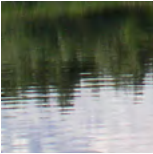




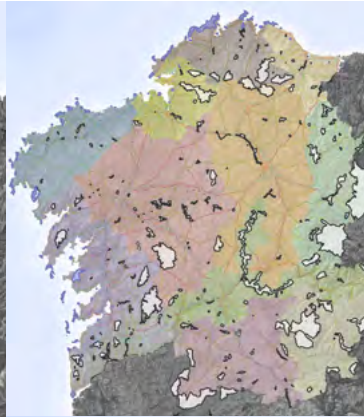
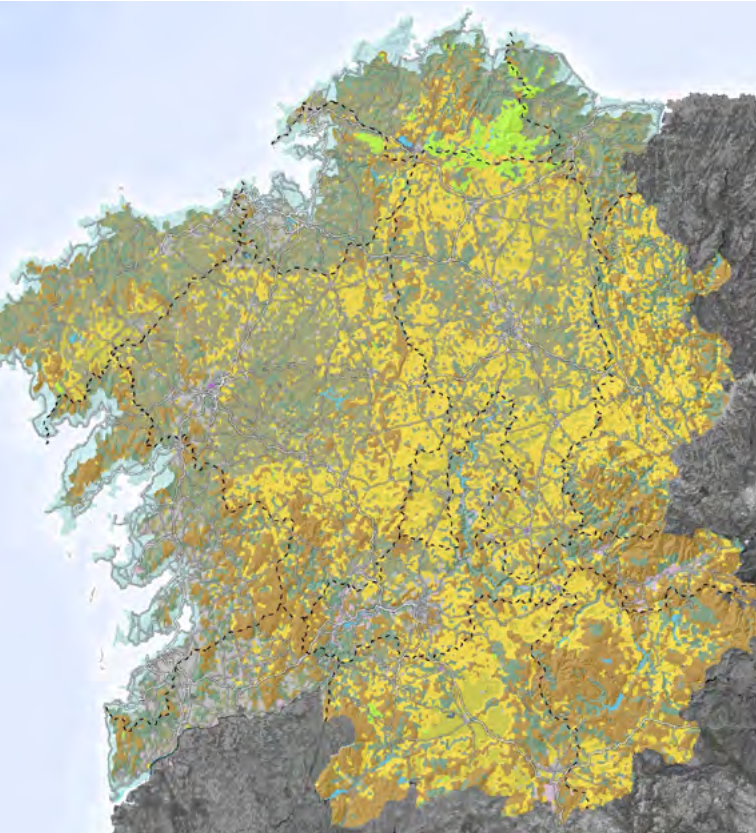
© *Sinisa Graovac*

## **Protection and management of Zasavica Special Nature Reserve: a tool for sustainable development,** Nature Conservation Movement of Sremska Mitrovica

Supporting Serbia's attempts to adopt the European Union Habitats Directive and the protection of two endangered cattle species, this project facilitated the development of a management and development plan, detailing protection methods and new opportunities for the reserve. Nature conservation in Serbia was predominantly based on the traditional approach of isolating protected areas from human activity in and around these areas. Nature conservation organisations lacked the capacity to work with modern approaches like those promoted by the directive. In view of the rapprochement of Serbia to the European Union, there was a need to introduce these new approaches, including participatory management planning, the identification, designation and management of protected areas, and linking nature conservation with the wider perspective of rural development.



The Committee of Ministers acknowledged and praised the great value of each project presented for the 5th Session 2016-2017 of the Landscape Award of the Council of Europe's European Landscape Convention and recommended making it well-known to the general public for its exemplary value, and as a source of inspiration. "Protection and Management of Zasavica Special Nature Reserve: a Tool for Sustainable Development" has promoted the public's awareness of natural habitats and its participation in initiatives to protect ecosystems and biodiversity in a way that is particularly favourable to the sustainable development of the rural environment.

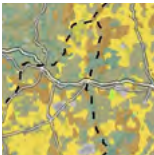


© UsosUnidades, AEIP, MapaGA

## Landscape inventory of Galicia: public participation for landscape characterisation and planning,

Institute of Land Studies, Ministry of Environment and Spatial Planning of the Government of Galicia, Spain

The Landscape Inventory of Galicia is a technical document focused on the first stage of landscape planning, namely on landscape analysis and diagnosis. It includes: delimitation of landscape areas and identification of landscape types in each area; zoning of landscape units and delimitation of areas of special landscape interest; inventory of landscape values; identification of degraded areas; analysis of the characteristics of each type of landscape, and of the forces and pressures transforming them. The first stage of the inventory involved the identification of 258 landscape types, resulting in the delimitation of 28,350 landscape units by means of a semi-automatic classification method. Citizens' opinions were taken into account from the beginning of the process and included in the final results. Particular note was taken of those analyses in which public opinion plays a key role, such as characterisation of landscape types and identification of special interest areas and degraded areas. In order to enhance the effectiveness of the participatory process, the opportunities offered by new geospatial information technologies have been exploited and a geographic information system (GIS) that can be used online by citizens has been developed. The information collected through this system was processed jointly with that of the experts and technicians, and enabled the development of the inventory.



The Committee of Ministers acknowledged and praised the great value of each project presented for the 5th Session 2016-2017 of the Landscape Award of the Council of Europe's European Landscape Convention and recommended making it well-known to the general public for its exemplary value, and as a source of inspiration. "Landscape Inventory of Galicia: Public Participation for Landscape Characterisation and Planning" has seen strong public participation in a process of identifying and characterising landscapes with a view to developing a landscape atlas of the Galicia region. It is a decisive step towards the development of landscape action strategies.



# Appendix 1

## European Landscape Convention of the Council of Europe

### Preamble

The member States of the Council of Europe signatory hereto,

Considering that the aim of the Council of Europe is to achieve a greater unity between its members for the purpose of safeguarding and realising the ideals and principles which are their common heritage, and that this aim is pursued in particular through agreements in the economic and social fields;

Concerned to achieve sustainable development based on a balanced and harmonious relationship between social needs, economic activity and the environment;

Noting that the landscape has an important public interest role in the cultural, ecological, environmental and social fields, and constitutes a resource favourable to economic activity and whose protection, management and planning can contribute to job creation;

Aware that the landscape contributes to the formation of local cultures and that it is a basic component of the European natural and cultural heritage, contributing to human well-being and consolidation of the European identity;

Acknowledging that the landscape is an important part of the quality of life for people everywhere: in urban areas and in the countryside, in degraded areas as well as in areas of high quality, in areas recognised as being of outstanding beauty as well as everyday areas;

Noting that developments in agriculture, forestry, industrial and mineral production techniques and in regional planning, town planning, transport, infrastructure, tourism and recreation and, at a more general level, changes in the world economy are in many cases accelerating the transformation of landscapes;

Wishing to respond to the public's wish to enjoy high quality landscapes and to play an active part in the development of landscapes;

Believing that the landscape is a key element of individual and social well-being and that its protection, management and planning entail rights and responsibilities for everyone;



Having regard to the legal texts existing at international level in the field of protection and management of the natural and cultural heritage, regional and spatial planning, local self-government and transfrontier co-operation, in particular the Convention on the Conservation of European Wildlife and Natural Habitats (Bern, 19 September 1979), the Convention for the Protection of the Architectural Heritage of Europe (Granada, 3 October 1985), the European Convention on the Protection of the Archaeological Heritage (revised) (Valletta, 16 January 1992), the European Outline Convention on Transfrontier Co-operation between Territorial Communities or Authorities (Madrid, 21 May 1980) and its additional protocols, the European Charter of Local Self-government (Strasbourg, 15 October 1985), the Convention on Biological Diversity (Rio, 5 June 1992), the Convention concerning the Protection of the World Cultural and Natural Heritage (Paris, 16 November 1972), and the Convention on Access to Information, Public Participation in Decision-making and Access to Justice on Environmental Matters (Aarhus, 25 June 1998);

Acknowledging that the quality and diversity of European landscapes constitute a common resource, and that it is important to co-operate towards its protection, management and planning;

Wishing to provide a new instrument devoted exclusively to the protection, management and planning of all landscapes in Europe,

Have agreed as follows:

## **Chapter I – General provisions**

### **Article 1 – Definitions**

For the purposes of the Convention:

- a. “Landscape” means an area, as perceived by people, whose character is the result of the action and interaction of natural and/or human factors;
- b. “Landscape policy” means an expression by the competent public authorities of general principles, strategies and guidelines that permit the taking of specific measures aimed at the protection, management and planning of landscapes;
- c. “Landscape quality objective” means, for a specific landscape, the formulation by the competent public authorities of the aspirations of the public with regard to the landscape features of their surroundings;

d. “Landscape protection” means actions to conserve and maintain the significant or characteristic features of a landscape, justified by its heritage value derived from its natural configuration and/or from human activity;

e. “Landscape management” means action, from a perspective of sustainable development, to ensure the regular upkeep of a landscape, so as to guide and harmonise changes which are brought about by social, economic and environmental processes;

f. “Landscape planning” means strong forward-looking action to enhance, restore or create landscapes.

## **Article 2 – Scope**

Subject to the provisions contained in Article 15, this Convention applies to the entire territory of the Parties and covers natural, rural, urban and peri-urban areas. It includes land, inland water and marine areas. It concerns landscapes that might be considered outstanding as well as everyday or degraded landscapes.

## **Article 3 – Aims**

The aims of this Convention are to promote landscape protection, management and planning, and to organise European co-operation on landscape issues.

## **Chapter II – National measures**

### **Article 4 – Division of responsibilities**

Each Party shall implement this Convention, in particular Articles 5 and 6, according to its own division of powers, in conformity with its constitutional principles and administrative arrangements, and respecting the principle of subsidiarity, taking into account the European Charter of Local Self-government. Without derogating from the provisions of this Convention, each Party shall harmonise the implementation of this Convention with its own policies.

### **Article 5 – General measures**

Each Party undertakes:

a. to recognise landscapes in law as an essential component of people’s surroundings, an expression of the diversity of their shared cultural and natural heritage, and a foundation of their identity;

- b. to establish and implement landscape policies aimed at landscape protection, management and planning through the adoption of the specific measures set out in Article 6;
- c. to establish procedures for the participation of the general public, local and regional authorities, and other parties with an interest in the definition and implementation of the landscape policies mentioned in paragraph b above;
- d. to integrate landscape into its regional and town planning policies and in its cultural, environmental, agricultural, social and economic policies, as well as in any other policies with possible direct or indirect impact on landscape.

## **Article 6 – Specific measures**

### *A. Awareness-raising*

Each Party undertakes to increase awareness among the civil society, private organisations, and public authorities of the value of landscapes, their role and changes to them.

### *B. Training and education*

Each Party undertakes to promote:

- a. training for specialists in landscape appraisal and operations;
- b. multidisciplinary training programmes in landscape policy, protection, management and planning, for professionals in the private and public sectors and for associations concerned;
- c. school and university courses which, in the relevant subject areas, address the values attaching to landscapes and the issues raised by their protection, management and planning.

### *C. Identification and assessment*

1. With the active participation of the interested parties, as stipulated in Article 5.c, and with a view to improving knowledge of its landscapes, each Party undertakes:

- a. i. to identify its own landscapes throughout its territory;
- ii. to analyse their characteristics and the forces and pressures transforming them;
- iii. to take note of changes;

b. to assess the landscapes thus identified, taking into account the particular values assigned to them by the interested parties and the population concerned.

2. These identification and assessment procedures shall be guided by the exchanges of experience and methodology, organised between the Parties at European level pursuant to Article 8.

#### *D. Landscape quality objectives*

Each Party undertakes to define landscape quality objectives for the landscapes identified and assessed, after public consultation in accordance with Article 5.c.

#### *E. Implementation*

To put landscape policies into effect, each Party undertakes to introduce instruments aimed at protecting, managing and/or planning the landscape.

### **Chapter III – European co-operation**

#### **Article 7 – International policies and programmes**

Parties undertake to co-operate in the consideration of the landscape dimension of international policies and programmes, and to recommend, where relevant, the inclusion in them of landscape considerations.

#### **Article 8 – Mutual assistance and exchange of information**

The Parties undertake to co-operate in order to enhance the effectiveness of measures taken under other articles of this Convention, and in particular:

- a. to render each other technical and scientific assistance in landscape matters through the pooling and exchange of experience, and the results of research projects;
- b. to promote the exchange of landscape specialists in particular for training and information purposes;
- c. to exchange information on all matters covered by the provisions of the Convention.

## **Article 9 – Transfrontier landscapes**

The Parties shall encourage transfrontier co-operation on local and regional level and, wherever necessary, prepare and implement joint landscape programmes.

## **Article 10 – Monitoring of the implementation of the Convention**

1. Existing competent Committees of Experts set up under Article 17 of the Statute of the Council of Europe shall be designated by the Committee of Ministers of the Council of Europe to be responsible for monitoring the implementation of the Convention.
2. Following each meeting of the Committees of Experts, the Secretary General of the Council of Europe shall transmit a report on the work carried out and on the operation of the Convention to the Committee of Ministers.
3. The Committees of Experts shall propose to the Committee of Ministers the criteria for conferring and the rules governing the Landscape award of the Council of Europe.

## **Article 11 – Landscape award of the Council of Europe**

1. The Landscape award of the Council of Europe is a distinction which may be conferred on local and regional authorities and their groupings that have instituted, as part of the landscape policy of a Party to this Convention, a policy or measures to protect, manage and/or plan their landscape, which have proved lastingly effective and can thus serve as an example to other territorial authorities in Europe. The distinction may be also conferred on non-governmental organisations having made particularly remarkable contributions to landscape protection, management or planning.
2. Applications for the Landscape award of the Council of Europe shall be submitted to the Committees of Experts mentioned in Article 10 by the Parties. Transfrontier local and regional authorities and groupings of local and regional authorities concerned, may apply provided that they jointly manage the landscape in question.
3. On proposals from the Committees of Experts mentioned in Article 10 the Committee of Ministers shall define and publish the criteria for conferring the Landscape award of the Council of Europe, adopt the relevant rules and confer the Award.
4. The granting of the Landscape award of the Council of Europe is to encourage those receiving the award to ensure the sustainable protection, management and/or planning of the landscape areas concerned.

## **Chapitre IV – Final clauses**

### **Article 12 – Relationship with other instruments**

The provisions of this Convention shall not prejudice stricter provisions concerning landscape protection, management and planning contained in other existing or future binding national or international instruments.

### **Article 13 – Signature, ratification and entry into force**

1. This Convention shall be open for signature by the member States of the Council of Europe. It shall be subject to ratification, acceptance or approval. Instruments of ratification, acceptance or approval shall be deposited with the Secretary General of the Council of Europe.

2. The Convention shall enter into force on the first day of the month following the expiry of a period of three months after the date on which ten member States of the Council of Europe have expressed their consent to be bound by the Convention in accordance with the provisions of the preceding paragraph.

3. In respect of any signatory State which subsequently expresses its consent to be bound by it, the Convention shall enter into force on the first day of the month following the expiry of a period of three months after the date of the deposit of the instrument of ratification, acceptance or approval.

### **Article 14 – Accession**

1. After the entry into force of this Convention, the Committee of Ministers of the Council of Europe may invite the European Community and any European State which is not a member of the Council of Europe, to accede to the Convention by a majority decision as provided in Article 20.d of the Council of Europe Statute, and by the unanimous vote of the States parties entitled to hold seats in the Committee of Ministers.

2. In respect of any acceding State, or the European Community in the event of its accession, this Convention shall enter into force on the first day of the month following the expiry of a period of three months after the date of deposit of the instrument of accession with the Secretary General of the Council of Europe.



## **Article 15 – Territorial application**

1. Any State or the European Community may, at the time of signature or when depositing its instrument of ratification, acceptance, approval or accession, specify the territory or territories to which the Convention shall apply.

2. Any Party may, at any later date, by declaration addressed to the Secretary General of the Council of Europe, extend the application of this Convention to any other territory specified in the declaration. The Convention shall take effect in respect of such territory on the first day of the month following the expiry of a period of three months after the date of receipt of the declaration by the Secretary General.

3. Any declaration made under the two paragraphs above may, in respect of any territory mentioned in such declaration, be withdrawn by notification addressed to the Secretary General of the Council of Europe. Such withdrawal shall become effective on the first day of the month following the expiry of a period of three months after the date of receipt of the notification by the Secretary General.

## **Article 16 – Denunciation**

1. Any Party may, at any time, denounce this Convention by means of a notification addressed to the Secretary General of the Council of Europe.

2. Such denunciation shall become effective on the first day of the month following the expiry of a period of three months after the date of receipt of the notification by the Secretary General.

## **Article 17 – Amendments**

1. Any Party or the Committees of Experts mentioned in Article 10 may propose amendments to this Convention.

2. Any proposal for amendment shall be notified to the Secretary General of the Council of Europe who shall communicate it to the member States of the Council of Europe, to the others Parties, and to any European non-member State which has been invited to accede to this Convention in accordance with the provisions of Article 14.

3. The Committees of Experts mentioned in Article 10 shall examine any amendment proposed and submit the text adopted by a majority of three-quarters of the Parties' representatives to the Committee of Ministers for adoption. Following its adoption by the Committee of Ministers by the majority provided for in Article 20.d of the Statute of the Council of Europe and by the unanimous

vote of the States parties entitled to hold seats in the Committee of Ministers, the text shall be forwarded to the Parties for acceptance.

4. Any amendment shall enter into force in respect of the Parties which have accepted it on the first day of the month following the expiry of a period of three months after the date on which three Council of Europe member States have informed the Secretary General of their acceptance. In respect of any Party which subsequently accepts it, such amendment shall enter into force on the first day of the month following the expiry of a period of three months after the date on which the said Party has informed the Secretary General of its acceptance.

#### **Article 18 – Notifications**

The Secretary General of the Council of Europe shall notify the member States of the Council of Europe, any State or the European Community having acceded to this Convention, of:

- a. any signature;
- b. the deposit of any instrument of ratification, acceptance, approval or accession;
- c. any date of entry into force of this Convention in accordance with Articles 13, 14 and 15;
- d. any declaration made under Article 15;
- e. any denunciation made under Article 16;
- f. any proposal for amendment, any amendment adopted pursuant to Article 17 and the date on which it comes into force;
- g. any other act, notification, information or communication relating to this Convention.

In witness whereof the undersigned, being duly authorised thereto, have signed this Convention.

Done at Florence, this 20th day of October 2000, in English and in French, both texts being equally authentic, in a single copy which shall be deposited in the archives of the Council of Europe. The Secretary General of the Council of Europe shall transmit certified copies to each member State of the Council of Europe and to any State or to the European Community invited to accede to this Convention.



## Appendix 2

### **Resolution CM/Res(2008)3 of the Committee of Ministers of the Council of Europe on the rules governing the Landscape Award of the Council of Europe**

The Committee of Ministers,

Recalling that Article 11 of the European Landscape Convention (ETS No. 176) (hereinafter “the Convention”), adopted by the Committee of Ministers of the Council of Europe on 19 July 2000 and opened for signature in Florence on 20 October 2000, institutes the Landscape Award of the Council of Europe (hereinafter “the award”);

Bearing in mind that this article provides that the Committee of Ministers shall define and publish the criteria for conferring the award, adopt the relevant rules and grant the award;

Bearing in mind that the award’s purpose is to reward exemplary practical initiatives for the achievement of landscape quality objectives on the territories of parties to the Convention (hereinafter “the Parties”);

Considering that the award is in keeping with the work done by the Council of Europe in favour of human rights, democracy and sustainable development and that it promotes the territorial dimension of human rights and democracy by acknowledging the importance of measures taken to improve the landscape features of people’s living conditions;

Convinced that the award is intended to heighten civil society’s awareness of the value of landscapes, of their role and of changes to them,

Resolves as follows:

- I. The rules governing the Landscape Award of the Council of Europe are adopted as set out in the appendix to this resolution.
- II. The criteria for awarding the Landscape Award of the Council of Europe are appended to these rules.

III. The Parties are invited to translate into their national language(s) and promote the rules governing the Landscape Award of the Council of Europe. They are also requested to encourage media coverage of the award so as to raise public awareness of the importance of landscapes.

## **Appendix to Resolution CM/Res(2008)3**

### **Rules governing the Landscape Award of the Council of Europe**

#### **Article 1 – Aim**

- a. The award is an honorary distinction which acknowledges a policy or measures implemented by local or regional authorities or their groupings, or particularly remarkable contributions by non-governmental organisations, for sustainable protection, management and/or planning of landscapes. It takes the form of a diploma. Special mentions may also be awarded.
- b. The award rewards a process of implementation of the Convention at national or transnational levels resulting in an effective, measurable achievement.
- c. The award also helps to make people more aware of the importance of landscapes for human development, consolidation of the European identity and the well-being of individuals and society as a whole. It fosters public participation in the decision-making process concerning landscape policies.

#### **Article 2 – Qualification of candidates**

In accordance with Article 11, paragraph 1, of the Convention, the following may be candidates for the award: local or regional authorities and their groupings that have instituted, as part of the landscape policy of a party to this Convention, a policy or measures to protect, manage and/or plan their landscape, which have proved lastingly effective and can thus serve as an example to other territorial authorities in Europe. Non-governmental organisations having made particularly remarkable contributions to landscape protection, management or planning may also be candidates.

In accordance with paragraph 2 of the above-mentioned article, transfrontier local or regional authorities and groupings of local and regional authorities concerned may be candidates, provided that they jointly manage the landscape in question.

#### **Article 3 – Procedure**

The procedure consists of three stages:

### *Stage 1 – Submission of candidatures*

Each Party may submit one candidature to the Secretariat General of the Council of Europe.

The candidature may be the result of a competition held by each Party taking into account the award criteria appended to these rules.

The application file, in one of the official languages of the Council of Europe (French or English), shall include:

- a presentation of the candidate (not more than three pages long);
- the description of a completed project for the protection, management and/or planning of a landscape, which has proved lastingly effective and can serve as an example. Mention shall be made of the convention provision concerned.

The description shall take the form of a paper document, approximately 20 pages long, accompanied by a digital copy in PDF format on CD-Rom and posters. The file may also include a video presentation lasting approximately five minutes. The materials submitted must be copyright-free for use by the Council of Europe in communications aimed at promoting the award or any other publications or activities relating to the Convention. The Council of Europe undertakes to cite the authors' names.

Files that are incomplete or fail to comply with the rules will not be taken into consideration.

The award is in principle conferred every two years. The files presenting candidatures must reach the Secretariat General of the Council of Europe by no later than 31 December of the year preceding the year of award.

### *Stage 2 – Consideration of candidatures*

An international jury set up as a subordinate body of the committees of experts referred to in Article 10 of the Convention<sup>1</sup> shall determine whether candidatures are admissible. The jury is composed of:

- one member of (each of) the committee(s) of experts responsible for monitoring the Convention appointed by the committee(s) concerned;
- one member of the Congress of Local and Regional Authorities of the Council of Europe, appointed by the Congress;



- one representative of an international non-governmental organisation, appointed by the Secretary General on the proposal of the Grouping of INGOs enjoying participatory status with the Council of Europe;
- three eminent specialists on landscape, appointed by the Secretary General of the Council of Europe.

The jury appoints a president.

The jury proposes the award winner from among the candidates admitted.

The proposals of the jury are taken by an absolute majority for the first two rounds of voting, and by a relative majority for the following round, based on the criteria set out in the appendix to these rules, stating the reasons for its choice. In case of equal votes, the vote of the president of the jury is decisive.

The reasons for the choice are explained.

The jury can propose to attribute one or more special mentions.

The committees of experts referred to in Article 10 of the Convention examine the proposals of the jury and forward their proposals concerning the award winner, and, wherever appropriate, special mentions, to the Committee of Ministers.

### *Stage 3 – Granting and presentation of the award and the special mentions*

In the light of the proposals of the committees of experts referred to in Article 10 of the Convention, the Committee of Ministers shall grant the award and any special mentions.

The award and the special mentions shall be presented by the Secretary General of the Council of Europe or his/her representative at a public ceremony.

## **Appendix to the rules**

### **Criteria for conferring the Landscape Award of the Council of Europe**

#### *Criterion 1 – Sustainable territorial development*

The completed projects submitted must give tangible form to the protection, management and/or planning of landscapes. This means that the projects must have been completed and open to the public at least three years, when the candidatures were submitted.

They must also:

- be part of a sustainable development policy and be in harmony with the territorial organisation of the area concerned;
- demonstrate their environmental, social, economic, cultural and aesthetic sustainability;
- counter or remedy any damage to landscape structures;
- help enhance and enrich the landscape and develop new qualities.

#### *Criterion 2 – Exemplary value*

The implementation of the policy or measures that have helped to improve the protection, management and/or planning of the landscapes concerned must set an example of good practice for others to follow.

#### *Criterion 3 – Public participation*

The policy or measures implemented with a view to the protection, management and/or planning of the landscapes concerned should involve the active participation of the public, local and regional authorities and other players and should clearly reflect the landscape quality objectives.

The public should be able to participate simultaneously in two ways:

- through dialogue and exchanges between members of society (public meetings, debates, procedures for participation and consultation in the field, for example);
- by national, regional or local authorities.

#### *Criterion 4 – Awareness-raising*

Article 6.A of the Convention provides that “each Party undertakes to increase awareness among civil society, private organisations and public authorities of the value of landscapes, their role and changes to them”. Action along these lines taken as part of the completed project concerned will be assessed.



## Appendix 3

### Resolution CM/Res(2017)18 of the Committee of Ministers of the Council of Europe on the Landscape Award Alliance of the Council of Europe

The Committee of Ministers,

Bearing in mind that Article 11 of the European Landscape Convention (ETS No. 176) (hereinafter “the Convention”), adopted by the Committee of Ministers of the Council of Europe on 19 July 2000 and opened for signature in Florence on 20 October 2000, institutes the Landscape Award of the Council of Europe (hereinafter “the Award”);

Considering Resolution CM/Res(2008)3 on the rules governing the Landscape Award of the Council of Europe;

Underlining that the Award’s purpose is to reward exemplary practical initiatives for the achievement of landscape quality objectives on the territories of Parties to the Convention (hereinafter “the Parties”);

Bearing in mind that the Award is in keeping with the work carried out by the Council of Europe in favour of human rights, democracy and sustainable development and that it promotes the territorial dimension of human rights and democracy by acknowledging the importance of measures taken to improve the landscape features of people’s living conditions;

Bearing in mind that the Award is intended to enhance civil society’s awareness of the landscapes’ values, roles and transformations;

Considering the importance of gathering the exemplary achievements presented by the States Parties to the European Landscape Convention in the framework of the sessions of this Landscape Award,

Resolves that:

I. The exemplary achievements presented by the States Parties to the European Landscape Convention in the framework of the sessions of the Landscape Award of the Council of Europe and

acknowledged by the Committee of Ministers of the Council of Europe, are part of the “Landscape Award Alliance of the Council of Europe”;<sup>1</sup>

II. The Parties are invited to encourage media coverage of the Council of Europe Landscape Award Alliance to raise public awareness of the importance of landscape.

---

1. [www.coe.int/en/web/landscape/landscape-award-alliance](http://www.coe.int/en/web/landscape/landscape-award-alliance)

The European Landscape Convention was adopted under the auspices of the Council of Europe with the aim of promoting the protection, management and planning of European landscape and organising international co-operation in this area. It is the first international treaty covering all aspects of landscape. It applies to the entire territory of the contracting parties and covers natural, rural, urban and peri-urban areas. It concerns landscapes that might be considered outstanding, commonplace or deteriorated.

The convention represents an important contribution to achieving the Council of Europe's objectives, namely to promote democracy, human rights and the rule of law, as well as to seek common solutions to the main problems facing European society. By taking into account landscape, culture and nature, the Council of Europe seeks to protect the quality of life and well-being in a sustainable development perspective.

The exemplary achievements presented by the States Parties to the convention in the framework of the sessions of the Landscape Award and acknowledged by the Committee of Ministers, are part of the "Landscape Award Alliance of the Council of Europe".

[www.coe.int](http://www.coe.int)

The Council of Europe is the continent's leading human rights organisation. It comprises 47 member states, including all members of the European Union. All Council of Europe member states have signed up to the European Convention on Human Rights, a treaty designed to protect human rights, democracy and the rule of law. The European Court of Human Rights oversees the implementation of the Convention in the member states.

COUNCIL OF EUROPE



CONSEIL DE L'EUROPE