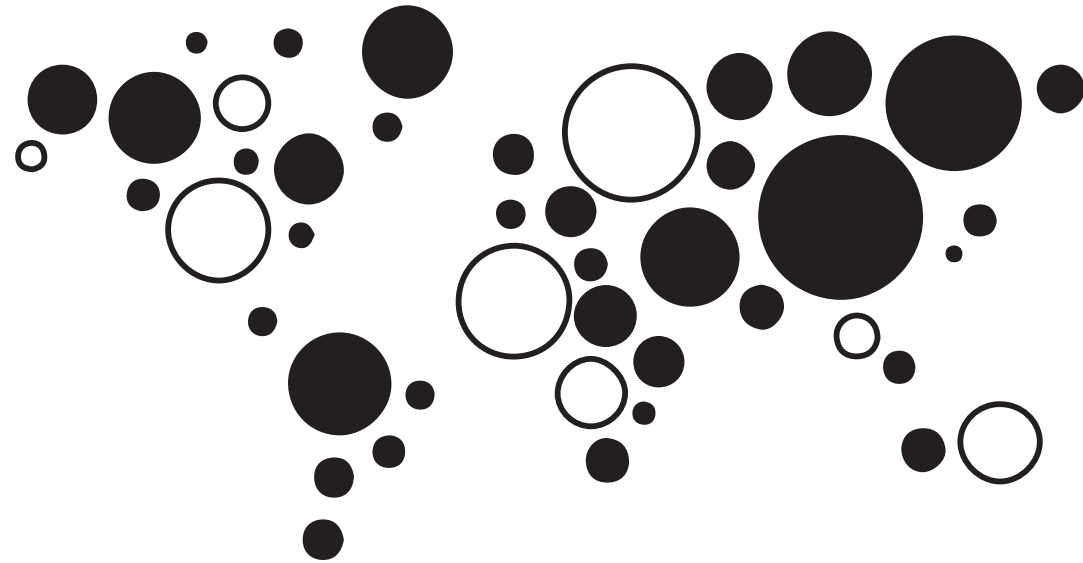
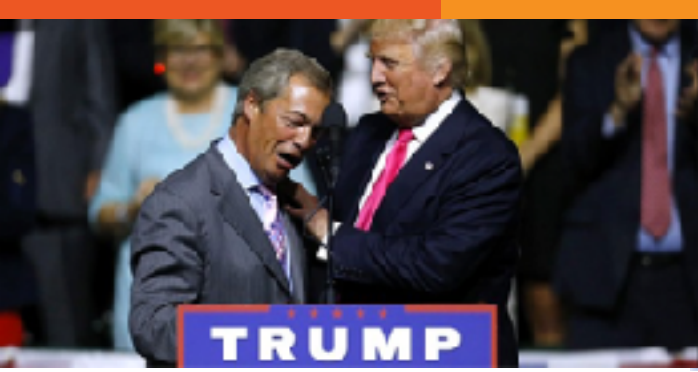




Transforming the challenges of mass migration into opportunities

www.migrationhub.network



WHY ARE WE HERE?

BECAUSE, WE BELIEVE THAT...



DIVERSITY MATTERS

**NOW IS THE TIME
TO STAND UP AS A
SOCIETY FOR THE
VALUES WE
BELIEVE IN...**

Inclusion

Innovation

Community

Co-creation

Social Impact

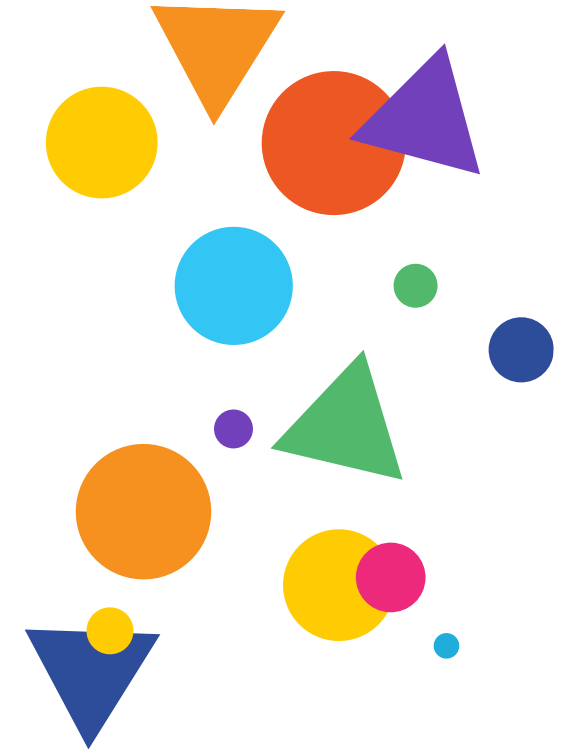
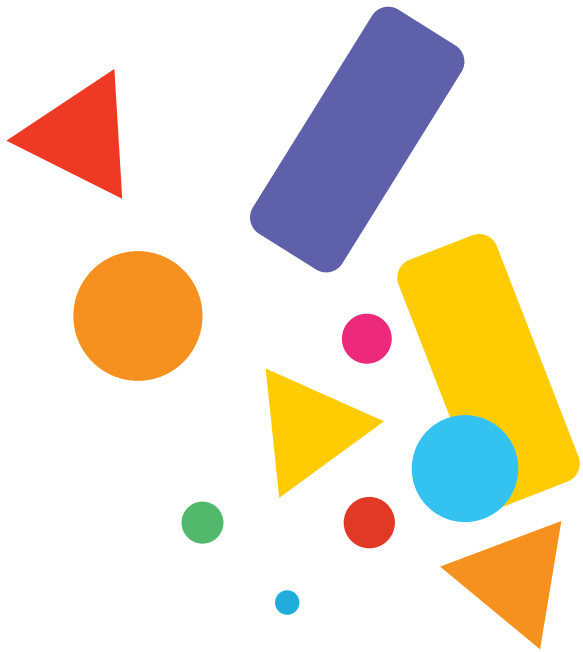




Since **1.3 million refugees entered Germany** in 2015 hundreds of civil organisations, volunteers, companies and smaller organisations have been responding to the migration challenge within Germany and across the world.

"Wir schaffen das!"

"We can make it!"



Migration is an economic opportunity, not a social burden.

HOWEVER,

During this time several problems have emerged.

Too many **similar projects** and ideas were launched, creating competition and wasted efforts rather than cooperation and genuine innovation. In most of the cases, asylum seekers were not involved as part of the solutions that were being developed.

**WE LEARNED THAT GOOD INTENTIONS ARE NOT GOOD ENOUGH.
WE HAVE TO BE SMART IN HOW WE WORK TOGETHER.**





Idee gehabt. Mitgemacht. Ausgezeichnet.

Ausgewählte Orte im Land
Förderbank

H **B** **U** **MIGRATION**

It hasn't been easy!



OUR SOLUTION

Co-create a **global platform** for asylum, migration, and refugee **cooperation**, which integrates **physical spaces & events** with **mentoring, services & a community support** for migrant entrepreneurship.

A man in a red shirt is standing and presenting to a group of people seated around a table in a meeting room. A whiteboard with a diagram is visible in the background. The room has a modern aesthetic with a green shelving unit on the right.

HOW WE DO IT

WE GATHER

We offer an open and free space to all the promising social initiatives and entrepreneurs working in the field of migration and inclusion. We turn informal gatherings in a community.

WE CONNECT

Our network connects social initiatives and organisations, fostering collaboration and best practice sharing. We promote the connection, relationships and learning processes between the gap of communications between grassroots, larger organisations and institutions.

WE MATCH

We're connecting corporates and non governmental sectors by providing mentoring and opportunities to grow together, while improving our services and connecting with potential supporters.

At the heart of Migration Hub is an inclusive community that shares values, promotes a sense of belonging and embraces diversity.



Migration Hub in Berlin: the living prototype

In the beginning of 2017, MH found a new home at the Berlin's former State Mint (Alte Münze), a historical building built in the 1930s by people who believed that "Germany belongs to Germans". Against this rhetoric, we are now transforming the building into a centre that not only welcomes migrants but embraces diversity for collaboration and co-creation.

MH has been recognised as one of the 100 Landmarks of Germany, for its approach and for becoming a place of reference

Projects

Currently we manage 13 projects in-house and connect over 100 projects in Berlin. MHN is developing a unique database of civil society organisations across Europe, which aims to measure social organisations impact and build a unique network.

Thanks to this effort, MHN is part of a European Consortium and working closely with the Innovation Department of the UNHCR with the aim to identify the most prominent organisations across Europe.

Priority

Thanks to a partnership with **HPI School of Design Thinking**. MHN aims to **transform** every hub into a community centre that allows to help and connect link-minded institutions and people to share successes, failures and learnings in a context where projects, programs and spaces can evolve.

Franchise

Coming up

Interest and places ready to turn into MHs

Munich

Hamburg

Bonn

Heidelberg

Milan

Tel Aviv

Amsterdam

Current Partners and Supporters

The logo for SWR (Spreewerkstätten) features the letters 'SWR' in a bold, black, sans-serif font. The 'S' and 'W' are connected, and the 'R' has a distinctive shape with a curved top.

SPREWERKSTÄTTEN

The logo for the School of Design Thinking at Hasso-Plattner-Institut Universität Potsdam. It features the text 'SCHOOL OF DESIGN THINKING' in a black, sans-serif font. The 'S' and 'D' are connected, and the 'I' in 'THINKING' has a unique shape.

Hasso-Plattner-Institut
Universität Potsdam



180Degrees

The logo for kiron features the word 'kiron' in a blue, serif font. The 'k' is lowercase and the 'i' has a dot. The 'o' is a simple circle, and the 'n' has a classic serif tail.

Upcoming

Innovation Department, UNHCR
Refugee Studies Centre, Oxford University
Die Universität our Köln
European Foundation for Democracy

Team : Diversity & Experience

Migration Hub Network gGmbH is run and owned by a latin american migrant (Ana María Alvarez Monge) with background in Human Rights and Development.

As a CEO and Chair of the organisation, Ana has built a strong team, selected by their diverse background, representing different areas and regions across the world with experiences in human rights, immigration and asylum policy, conflict prevention, social innovation and entrepreneurship, intercultural communication, arabic studies and with experience in international organisations.



