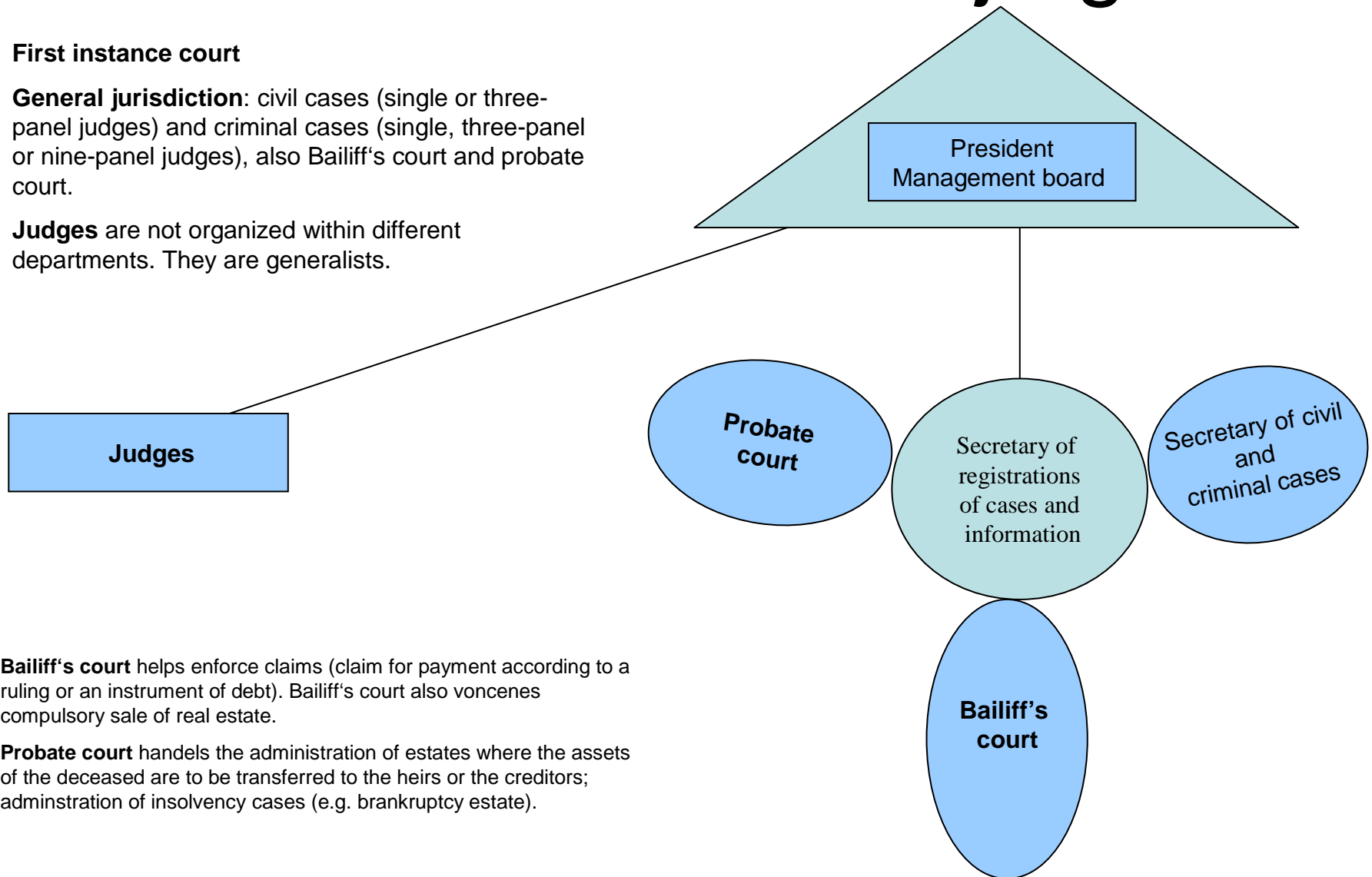


District court of Esbjerg

First instance court

General jurisdiction: civil cases (single or three-panel judges) and criminal cases (single, three-panel or nine-panel judges), also Bailiff's court and probate court.

Judges are not organized within different departments. They are generalists.



Bailiff's court helps enforce claims (claim for payment according to a ruling or an instrument of debt). Bailiff's court also conducts compulsory sale of real estate.

Probate court handles the administration of estates where the assets of the deceased are to be transferred to the heirs or the creditors; administration of insolvency cases (e.g. bankruptcy estate).