

An aerial photograph of a lush green landscape. The terrain is a patchwork of vibrant green fields and dense, dark green clusters of trees. The fields are irregularly shaped, and the trees form thick, winding belts and islands. The overall scene is a healthy, natural environment.

Implementation of the European Landscape Convention in Slovenia

Jelena Hladnik
Ministry of the Environment and Spatial
Planning

*Drawing landscape policies for the future , Trebinje, Bosnia and
Herzegovina , 25-26 January 2018*

Abstract

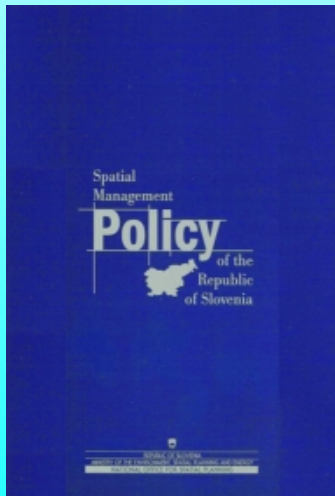


- **I. part - Legal recognition of landscape**
- **II. part - Slovenian landscape projects**
- **III. part- Where are we and how to proceed**

Legal recognition of landscape – by national legislation

SPATIAL PLANING

- Spatial Planning Act (2017)
- Spatial Management Policy of Slovenia (2001)
- Assessment of Spatial Development in Slovenia (2002)
- Spatial Development Strategy of Slovenia (2004)
- Spatial Planning Order (2004)



Landscape as:

- Identity
- Heritage
- resource

Legal recognition of landscape – by national legislation

The legal regulation have been adopted in several other fields:

- **nature conservation** – Biodiversity Conservation Strategy of Slovenia, Managements plans of protected areas
- **cultural conservation** - cultural heritage,
- **forestry and water management** - management plans
- **agriculture** – conservation of extensive agricultural landscape by agro-environmental programs, direct payments,

Implementation of the ELC – the first step: landscape analysis and character assessment – project: Regional Distribution of Landscape Types in Slovenia

made by: University of Ljubljana, Biotechnical Faculty,
Department of Landscape Architecture

leaders: Professor Janez Marušič and Professor Dušan Ogrin

time frame: From 1991 to 1998.

The aims of the project were:

- to categorize Slovenian landscapes according to visual appearance
- to prepare the basis for establishing direct protection of outstanding Slovenian landscapes
- to prepare guidelines for landscape development and conservation.

Evaluation of Slovene Landscapes

Four basic criteria:

- a) Natural Preservation
- b) Diversity
- c) Spatial order
- d) Harmony

Two additional criteria:

- e) Symbolic meaning of natural elements
- f) Symbolic meaning of cultural elements

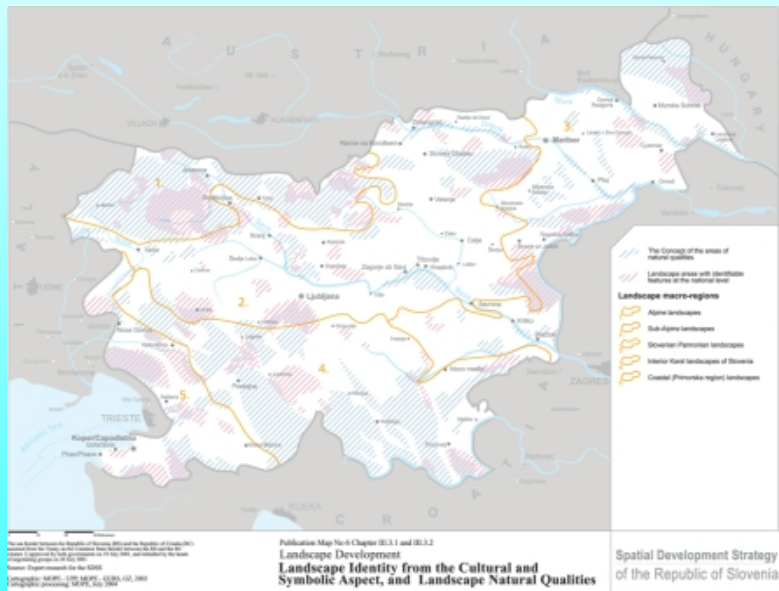
Landscape units were ranked on the score from 1 to 5:

- score 1 = the most, the largest, or to the highest degree
- score 5 = the least, the smallest, or to the lowest degree)

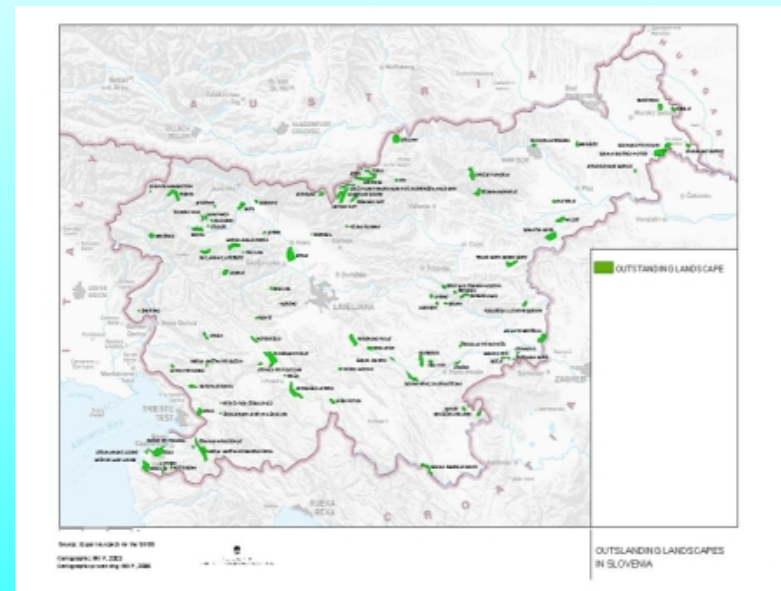
The most valuable and typical landscapes in Slovenia

- areas of landscape identity are a selection of areas with harmonic proportions between cultivated land, settlement and natura.
- outstanding landscapes are a selection of rare and unique landscapes.

Areas of Landscape Identity:



Slovenian Outstanding Landscapes:



Publication about the Project

The results of the research project were presented in six notebooks:

Methodological Basis

- 1 Alpine landscapes
- 2 Sub-Alpine landscapes
- 3 Sub-Pannonian landscapes
- 4 Karst landscapes of interior Slovenia
- 5 Littoral landscapes



Implementation of the ELC – the second step: public awareness-raising

Project: We are Making our Landscape

made by: Slovenian Association of Landscape Architects

time frame: October 2004 – May 2005

The aims of the project were educational and public awareness-raising among the teachers and children's

In April, which is the month dedicated to Landscape Architecture, we invite them to cooperate with us.



Activities and events in the framework of the project

- Publication of a series posters Slovenian Landscapes
- A seminar with a workshop to inform teachers about the project
- Competition for art and photographic works
- Exhibition of the best works and ceremony of awards
- Publishing of a brochure about the project



Implementation of the ELC – the third step: the reform of legislation and documents

1. We have new spatial and building act (2017), which integrate more landscape dimension
2. We are now in the middle of preparation of new Strategy of Spatial Development, and new Spatial Order of Slovenia
3. We are now on the beginning of the upgrade the existing methodology of identification and assessment of landscapes and designating landscape character areas
4. We have identify landscape features, important for biodiversity and prepare guidelines for their management

CONCLUSIONS

Now we are in front of the real dilemma:
**how to proceed in the field of landscape
planning, conservation,
management??**

Should we develop:

1. „landscape sector“ with landscape policy
2. spatial planning system as framework for landscape planning and strengthen coordination between sectors



THANK YOU FOR YOUR ATTENTION!

Jelena Hladnik
REPUBLIC OF SLOVENIA
Ministry of the Environment and Spatial Planning

Dunajska cesta 47,
1000 Ljubljana,
SLOVENIA

Phone: +386 1 478 7481

URL: <http://www.mko.gov.si/>

E-mail: jelena.hladnik@gov.si