

Landscape Inventory of Galicia: Public Participation for Landscape Characterisation and Planning

Inés Santé Riveira / Alfredo Fernández Ríos
Institute of Land Studies
Ministry of the Environment and Land Planning
Government of Galicia, Spain



Ministry of Environmental
Protection and Regional
Development
Republic of Latvia



Daugavpils
City Council



EUROPEAN LANDSCAPE CONVENTION
CONVENTION EUROPÉENNE DU PAYSAGE

COUNCIL OF EUROPE



CONSEIL DE L'EUROPE

- Galicia
- Aims of project
- The project
- Public participation
- Outcome: Characterisation of landscape types, Delimitation of Special Interest Areas and Identification of Special Attention Areas
- Sustainable territorial development
- Awareness-raising



Galicia



Autonomous community of Spain

Total area of 29,574 sq km

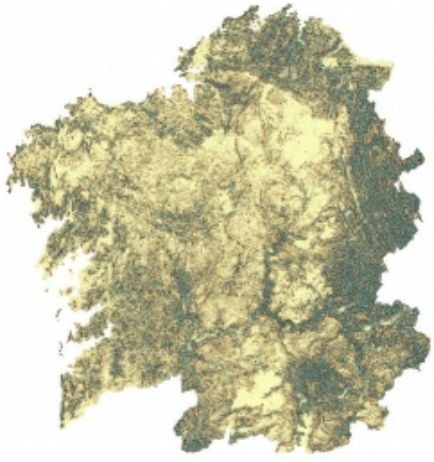
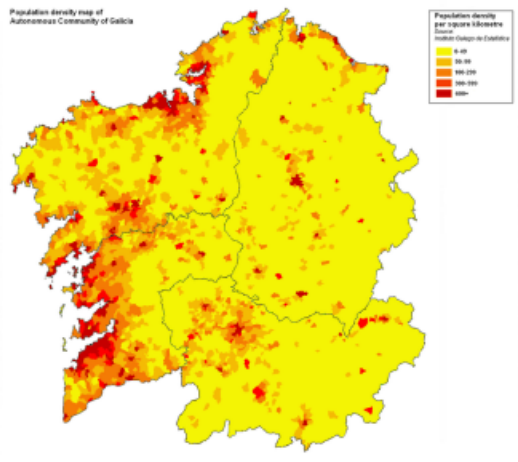
**Population of 2,710,607
Over 30,000 population settlements**

62,000 km of rivers

2,555 km of coastline

Two biogeographical Regions: Atlantic and Mediterranean





- Population settlements
- Population density
- Topographic Position Index
- Land Use
- Hydrography
- Natural Protected Areas



The main aim of the project was the development of the first landscape instrument to be established on the Law of Landscape Protection of Galicia (landscape inventories).

A public participation strategy:

- Integrating scientific knowledge and public participation;
- Including participation in every stage of the process;
- Involving a set of stakeholders and relevant participants from the community;
- Incorporating the results of public participation into the results and contents of the inventory in an explicit, direct and transparent way.

The project



Public Participation



Land Laboratory University of Santiago de Compostela

Technical team



Institute of Land Studies

Panel of experts



Public participation: workshops



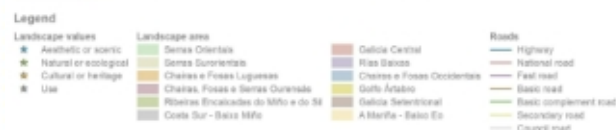
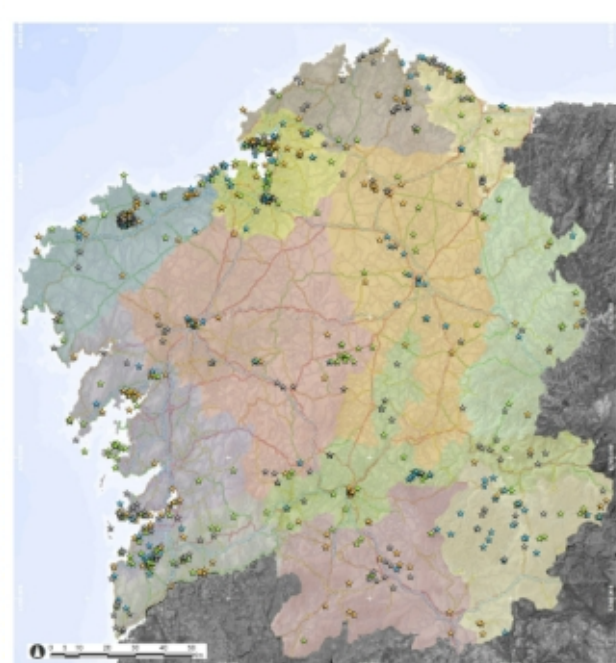
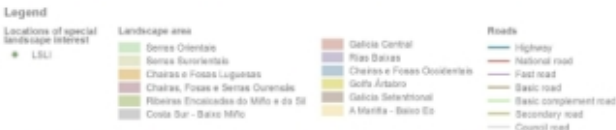
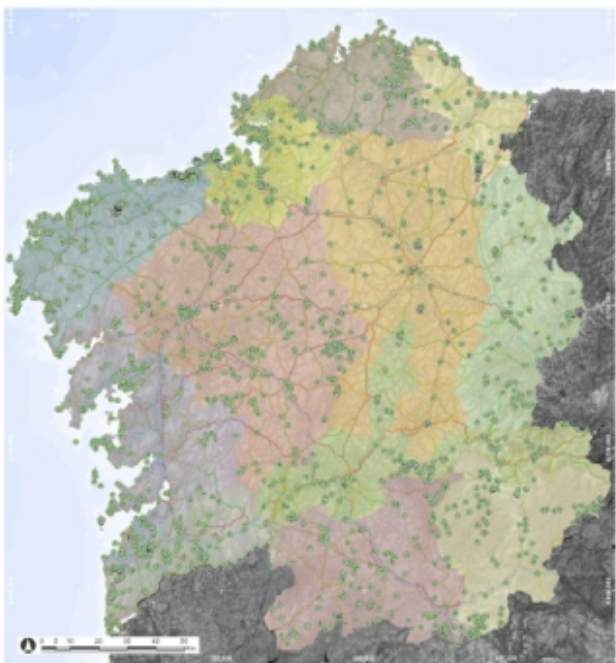


Figure 9. Locations with special landscape interest identified by the population. Source: Institute of Land Studies of the Regional Ministry of Environment and Land Planning of Galicia.

Figure 10. Degraded areas identified by the population and the technical team. Source: Institute of Land Studies of the Regional Ministry of Environment and Land Planning of Galicia.

Figure 11. Landscape values identified by the population. Source: Institute of Land Studies of the Regional Ministry of Environment and Land Planning of Galicia.

Public Participation Geographic Information System: Locations with landscape interest, landscape values and degraded areas



Public participation: Decision-making process

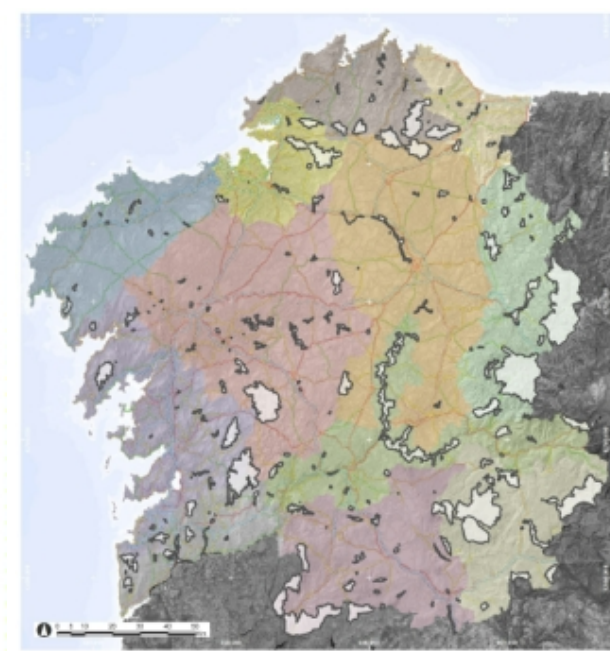
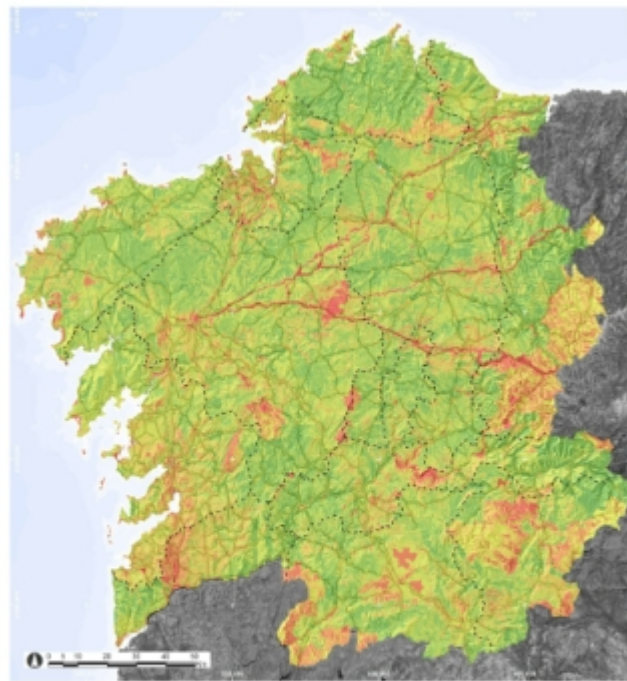
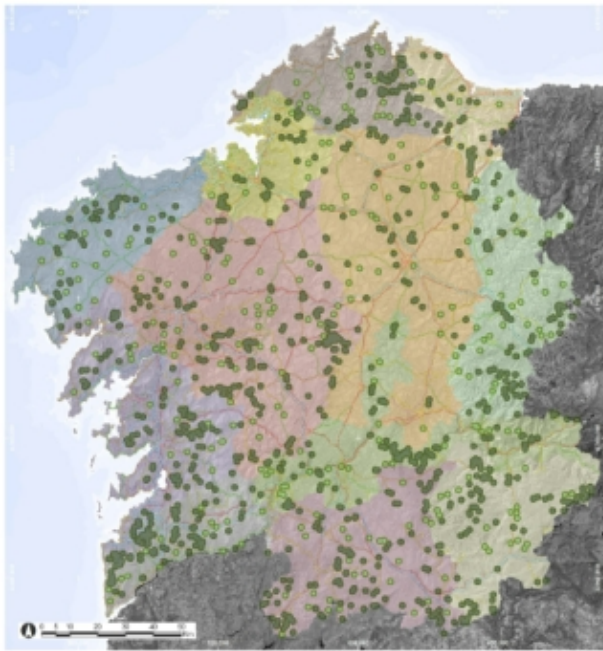


Figure 14. Areas identified from LSI for the selection of SIA candidates. Source: Institute of Land Studies of the Regional Ministry of Environment and Land Planning of Galicia.

Figure 15. Map of global landscape value. Source: Institute of Land Studies of the Regional Ministry of Environment and Land Planning of Galicia.

Figure 16. Special interest areas. Source: Institute of Land Studies of the Regional Ministry of Environment and Land Planning of Galicia.

Special Interest Areas and Special Attention Areas



The contents of the inventory:

- The identification of landscape types and the delimitation of landscape units;
- The landscape characterisation and the inventory of landscape values;
- A visibility analysis;
- The delimitation of Special Interest Areas (SIAs);
- The identification of Special Attention Areas;
- The analysis of drivers, dynamics and current state of the landscape types.

**Land Laboratory
University of Santiago de
Compostela**

Institute of Land Studies

Panel of experts

Public Participation

Outcome



ESTRATEGIA PAISAXE GALEGA

I. Grande Área Paisaxística Serras Orientais

II. Grande Área Paisaxística Serras Surorientais

III. Grande Área Paisaxística Chairas e Fosas Luguesas

IV. Grande Área Paisaxística Chairas, Fosas e Serras Ourenás

PAISAXES DE GALICIA

V. Grande Área Paisaxística Ribeiras Encaixadas do Miño e do Sil

VI. Grande Área Paisaxística Costa Sur - Baixo Miño

VII. Grande Área Paisaxística Galicia Central

VIII. Grande Área Paisaxística Rías Baixas

IX. Grande Área Paisaxística Chairas e Fosas Occidentais

X. Grande Área Paisaxística Golfo Ártabro

XI. Grande Área Paisaxística Galicia Setentrional

XII. Grande Área Paisaxística A Mariña - Baixo Eo

**13 volumes:
one methodological memory and one
document for each of the 12 landscape
areas of Galicia**



The Landscape Inventory of Galicia constitutes the basis for the future Galician Landscape Guidelines which must establish the landscape quality objectives for the landscape units, SIAs and SAEs delimited in the Inventory.

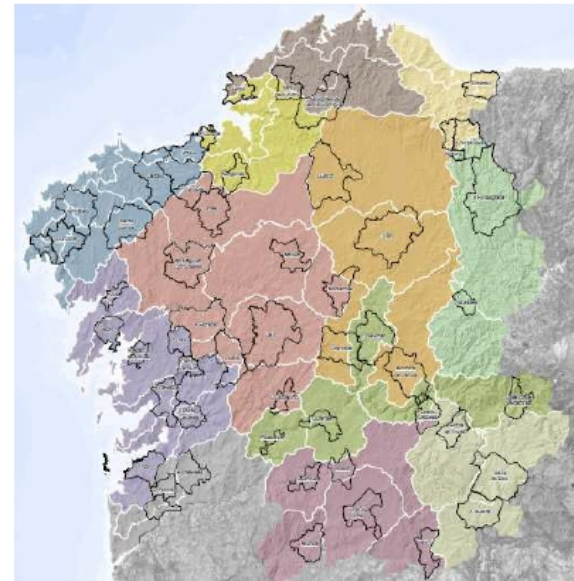
Landscape Guidelines must also define rules and recommendations for achieving the landscape quality objectives in each landscape unit, as well as measures and actions for the SAEs.

In addition to this, according to the new Law no. 2/2016 concerning Urban Planning, the SIAs delimited by the Inventory acquire directly the category of landscape protection land in the urban planning and, consequently, the uses and activities in these areas are regulated by this law.

The people feel responsible for the future of the landscape when they are encouraged to take an active part in landscape management and planning.

Continuity the public participation in Galician Landscape Guidelines (64 workshops):

- Landscape quality objectives;
- Rules;
- Recommendations.



Thanks for your attention

