

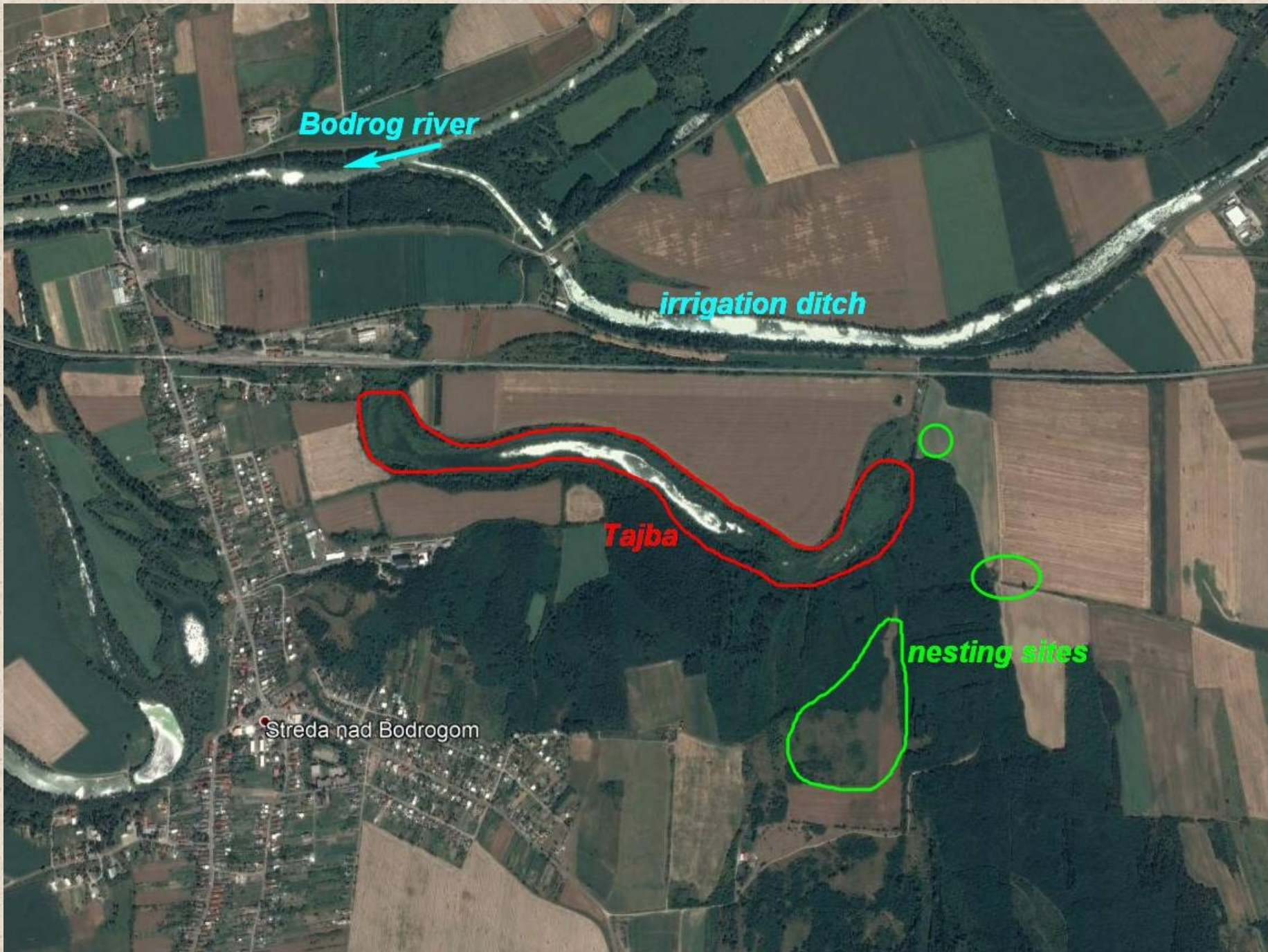
Conservation programme for the European pond turtle (*Emys orbicularis*) in Slovakia





Tajba National Nature Reserve (since 1966)







Marcelová – newly discovered continuously reproducing population in the Pohřebište Nature Reserve (since 1993)



Conservation programme (2017)

- **Identification of reproducing populations**
- **Development of projects to carry out important conservation activities:**
 - **management and protection of nesting sites, especially in the Tajba NNR and Pohrebište NR**
 - **restoration of water regime, especially in the Tajba NNR**

