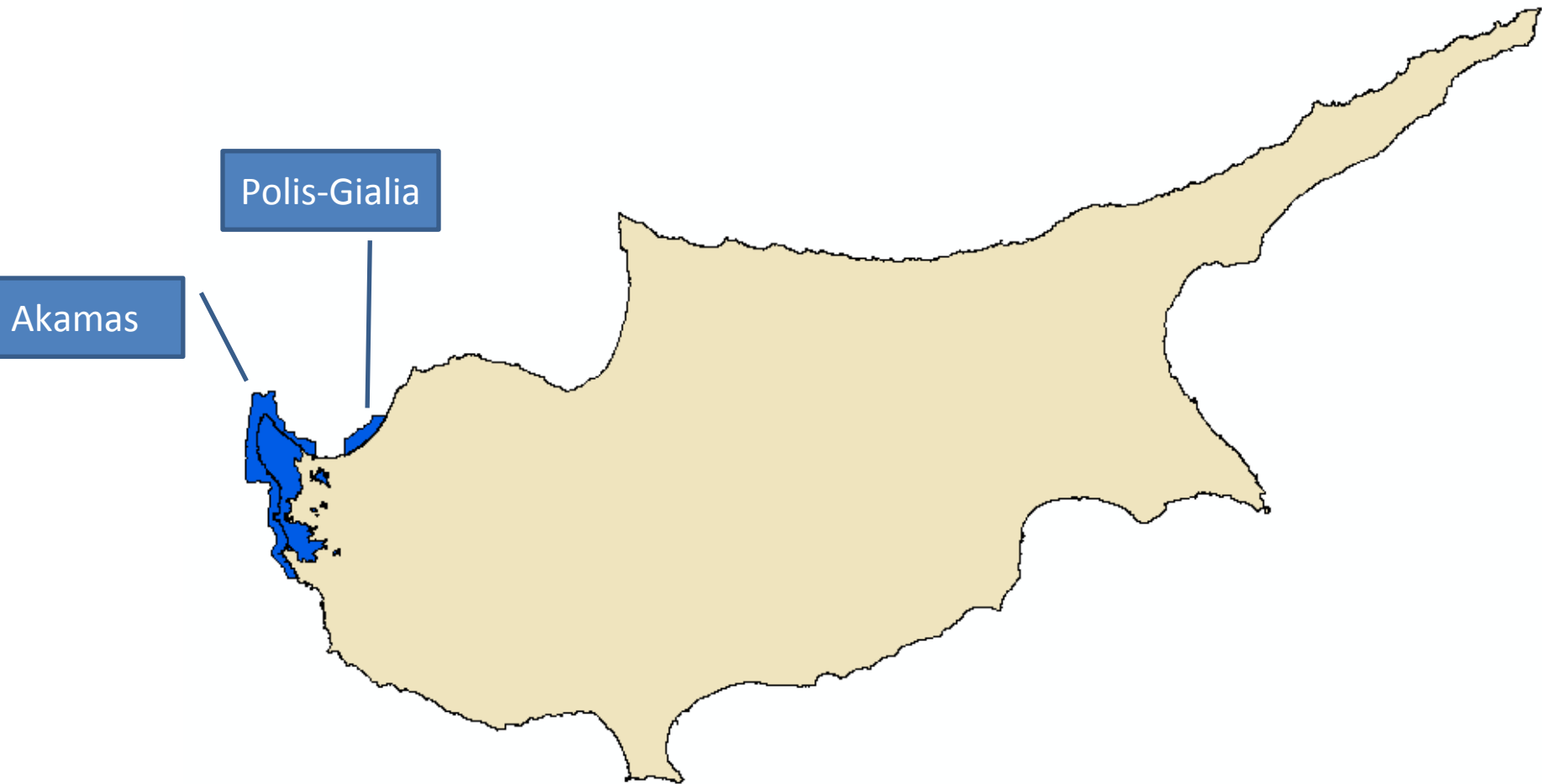


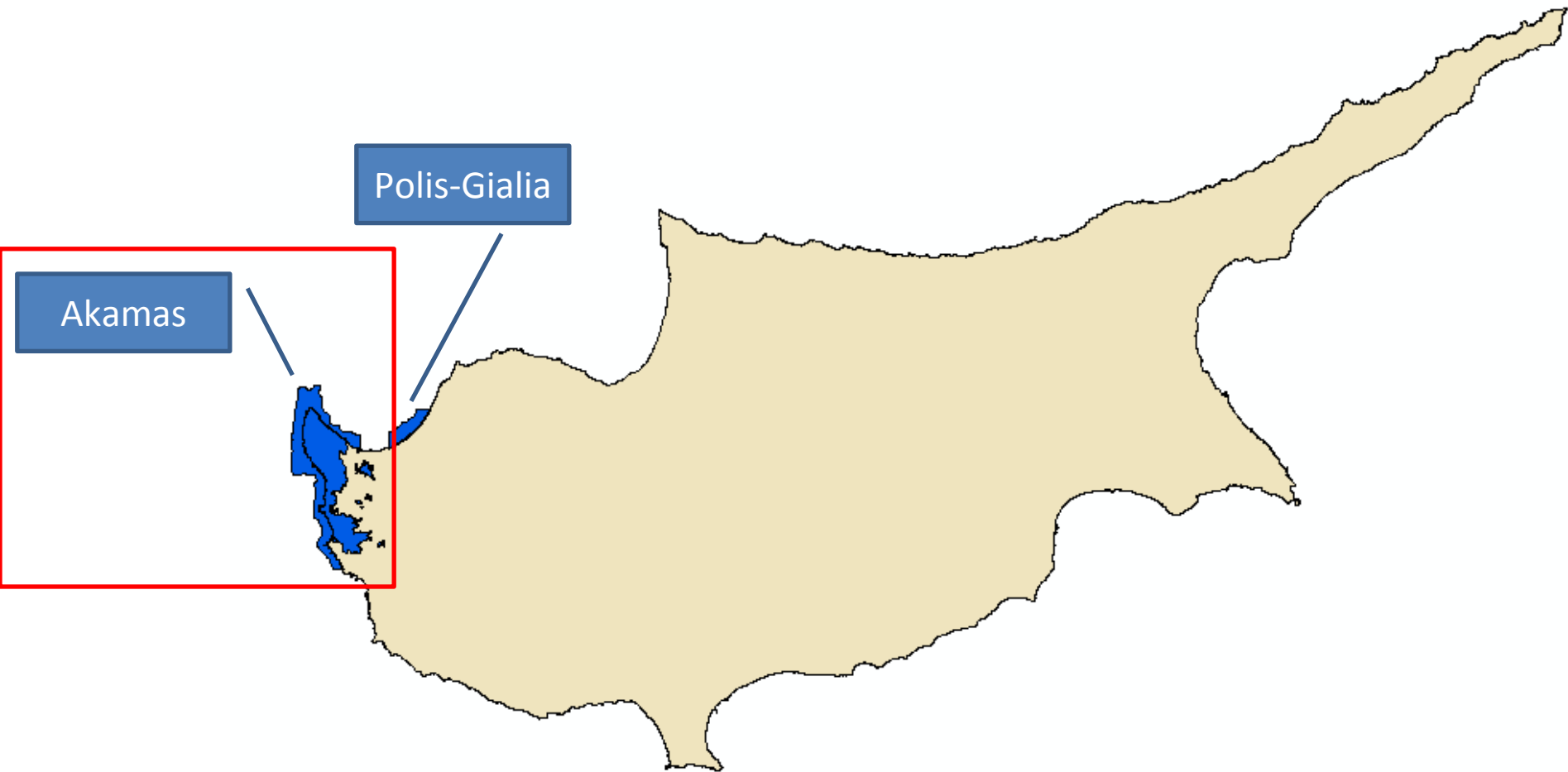


**CONSERVATION OF THE AKAMAS AND LIMNI  
AREAS IN WESTERN CYPRUS:  
THREATS POSED TO WILDLIFE BY DEVELOPMENT  
NEAR OR WITHIN THESE AREAS**

# Akamas and Polis-Gialia Natura 2000 sites

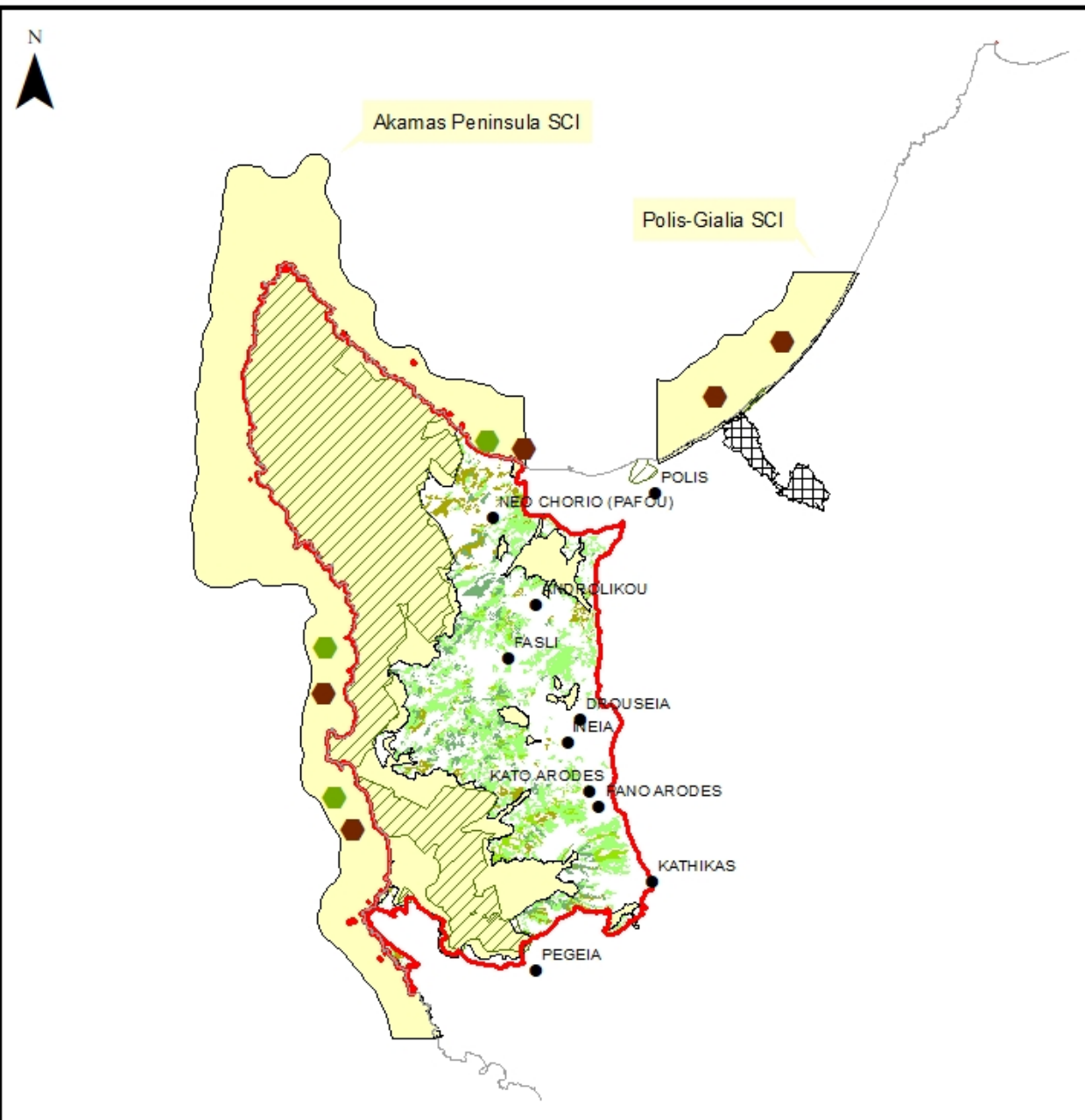


# Akamas Natura 2000 site





# Designations, characterisations, important habitats and threats in Akamas Peninsula and Polis-Gialia Areas



## Legend

Turtle Nesting Sites

*Caretta caretta*

*Chelonia mydas*

Communities

Limni Golf Project

LIFE Third Countries 1998 Project

National State Forest

Sites of Community Importance (SCIs)

LIFE Third Countries 1998 Project Habitats

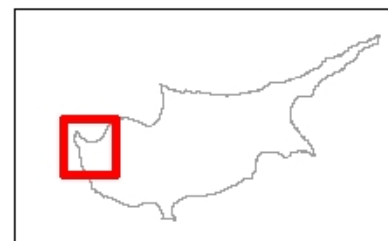
Habitat Code

Mixed habitat including 5330, 6220\* and/or 9320

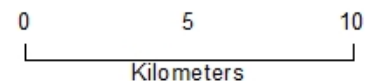
5330

6220\*

9320



This map has been created by  
The Cyprus Conservation Foundation  
Terra Cypria



# Akamas Natura 2000 site

## What are the main issues?

### **DESIGNATION**

- Insufficient Natura 2000 designation, priority habitats unprotected
- No plans of giving the area an international designation status

### **MANAGEMENT PLANNING**

- Existing Management Plans (SCI, SAC, grazing capacity plan) do not have legal standing and are not implemented
- New Plans are under preparation, carrying potential threats
  - Town and Planning Department's Local Plan
  - Management Plan for the National Forest Park



# **Akamas Natura 2000 site**

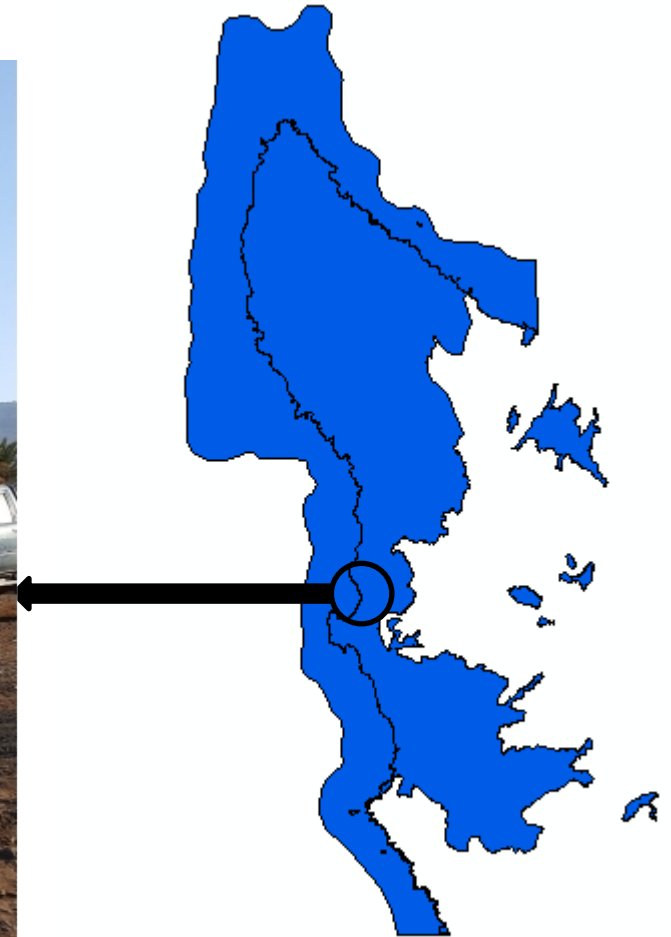
## **What are the main issues?**

### **MANAGEMENT ON-THE-GROUND**

- No effective protection measures in place
- Integrated management for early response system, intervention, accountability and fines not in place

Some examples of the result of such lack of integrated management

# North and South Lara Beaches - Green Turtle and Loggerhead Nesting Areas

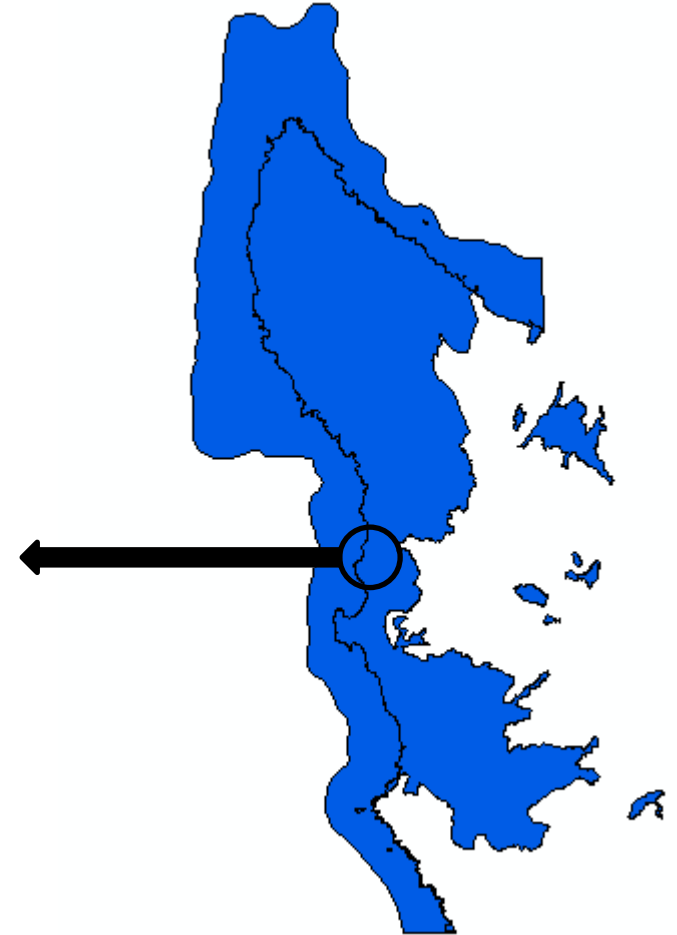


**Uncontrolled Illegal Activities**



**October 2017**

**International Quad Bike exhibition organised in close to Lara**



**September 2017**

**Wedding Party organised at Asprokremos Sea Turtle Nesting beach**



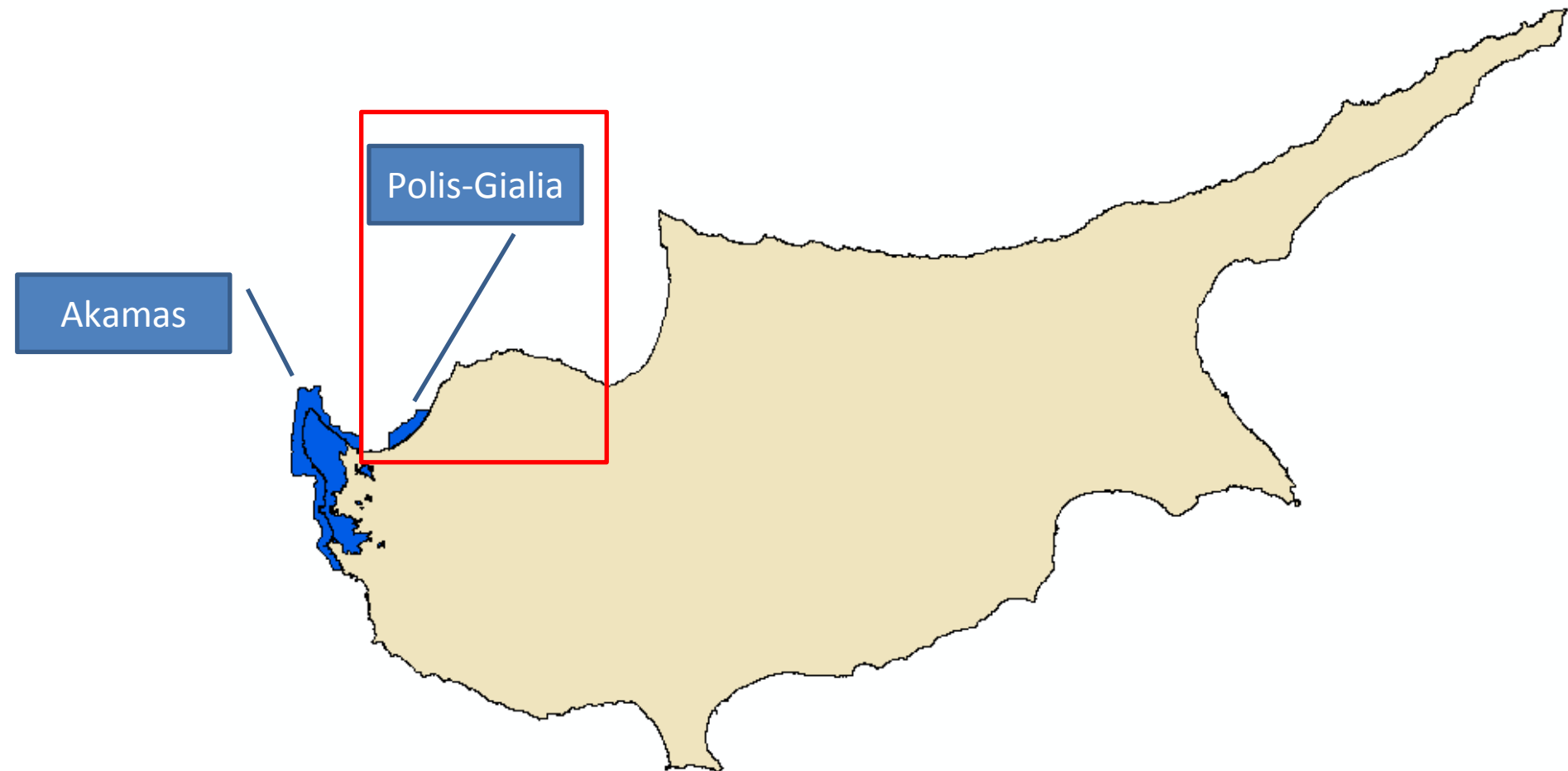
**Aborted at the last moment after strong public outcry**

# **Akamas Natura 2000 site**

## **What do we want to see?**

- Expansion of Natura 2000 boundaries
- Establishment of a legal standing to the Management Plan
- Allocation of funding for the Management Plan's implementation and for effective patrolling
- Prohibition of infrastructure, overnight stay and dining outside of the boundaries of the designated Development Areas of Akamas villages in any future plans

# Polis-Gialia Natura 2000 site





# Polis-Gialia Natura 2000 site

A closer look on the 10km long turtle-nesting beach





# Polis-Gialia Natura 2000 site

## What is its importance?

- Total Mediterranean Nests 6000 p.a.
- Total Cyprus Nests 1000 p.a.
- Total Polis-Gialia nests 550 p.a.
- Total Nests directly influenced by the development 200-250 p.a.

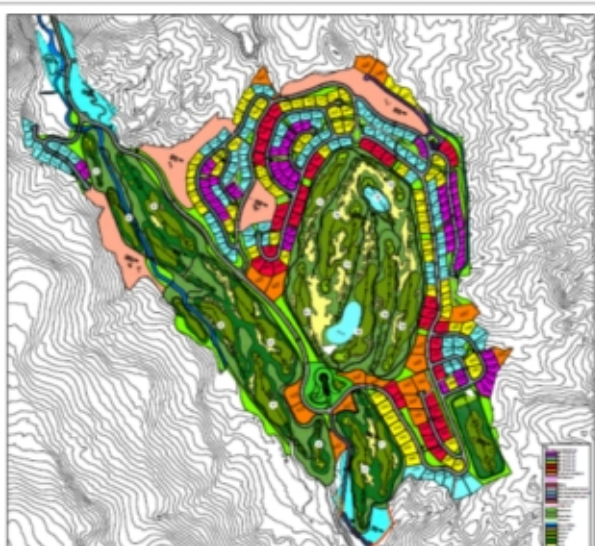
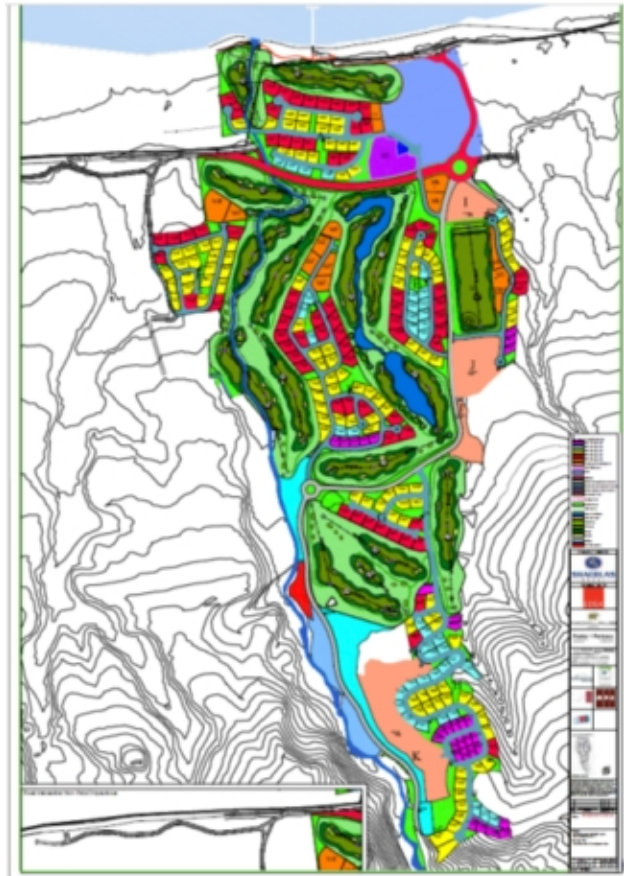
**25% of Total Cyprus Nests**

**4.2% of Total Mediterranean Nests**



# The Limni Golf Development

- 2 Golf Courses (18 holes each)
- Club House
- **792 Houses**
- **Hotel (160 rooms)**
- Road Network
- Sport Facilities



# Limni Golf Development

## What are the issues?

- The 475m shore area free of any development (suggested by the EU Commission and originally by the environment authorities), is not respected in the project designs, which received a green light by the authorities
- The cumulative effects of the project not assessed
- Insufficient mitigation measures are proposed

E.g. Out of the 28 lighting conditions imposed by the authorities, 17 are based solely or partly on residents' compliance within their private properties



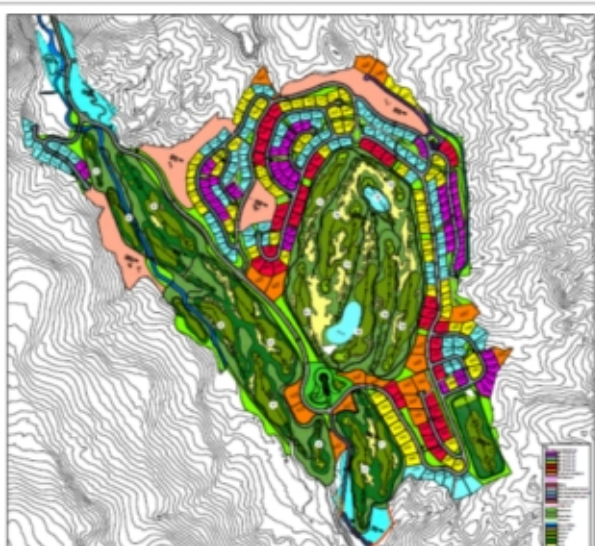
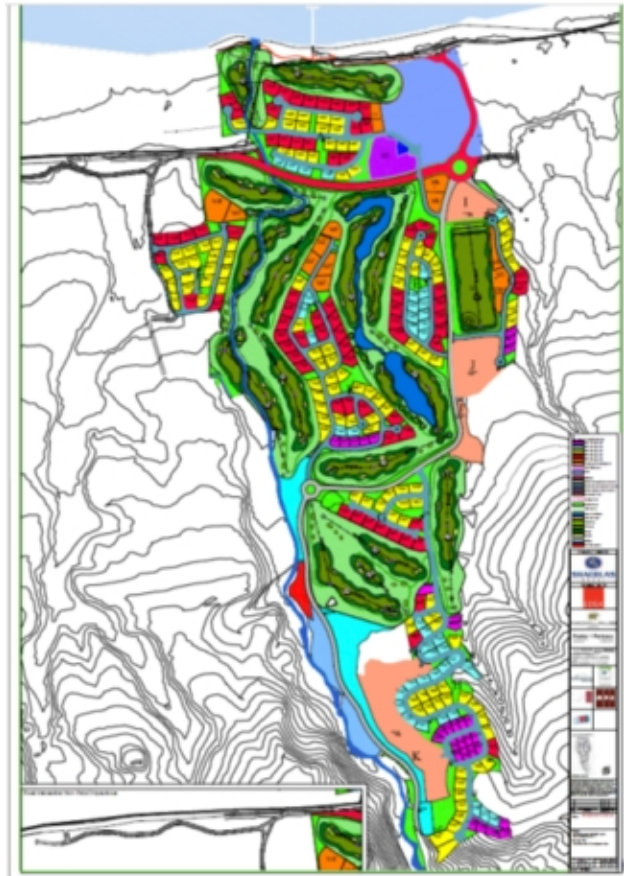


# Why 475 meters buffer zone



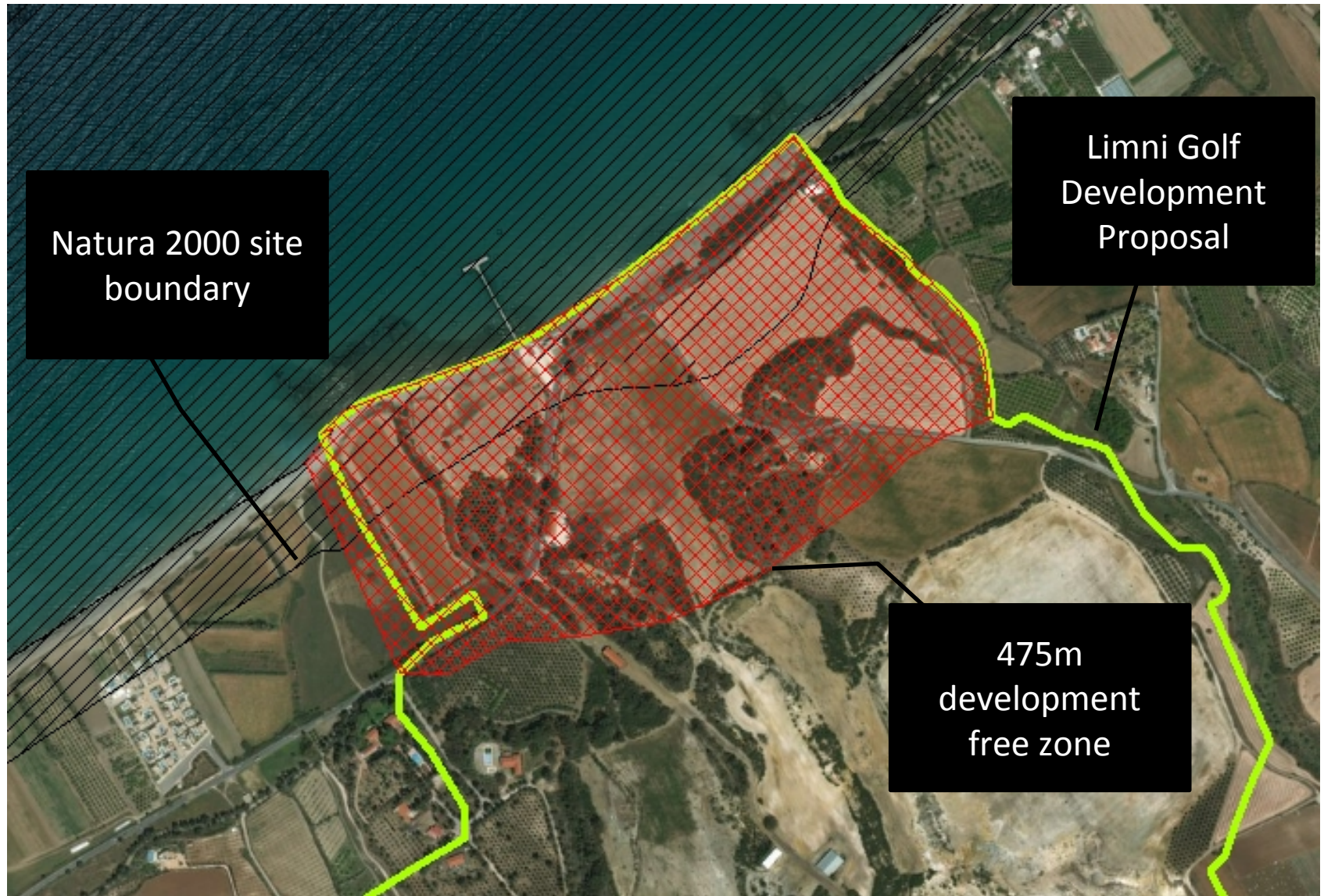
# The Limni Golf Development

- 2 Golf Courses (18 holes each)
- Club House
- **792 Houses**
- **Hotel (160 rooms)**
- Road Network
- Sport Facilities





# Area that needs to remain free of housing development



# Limni Golf Development

## What do we want to see?

- At least 475m shore free from all development
- Reduction of residential capacity of the project
- Establishment and enforcement of a Management Plan and Conservation Decree for the site
- Funding to be allocated for its implementation and for careful monitoring and patrolling



TERRA CYPRIA

ΤΟ ΚΥΠΡΙΑΚΟ ΙΔΡΥΜΑ ΠΡΟΣΤΑΣΙΑΣ ΤΟΥ ΠΕΡΙΒΑΛΛΟΝΤΟΣ  
THE CYPRUS CONSERVATION FOUNDATION  
KIBRIS ÇEVRE KORUMA VAKFI



Working for a sustainable Cyprus in cooperation with the Cyprus Environmental Studies Centre and the Laona Foundation for the Conservation and Regeneration of the Cypriot Countryside

Partners of: European Centre for Nature Conservation (ECNC), Eurosite, Planta Europa, Mediterranean Action Plan (MAP)

**Thank you**