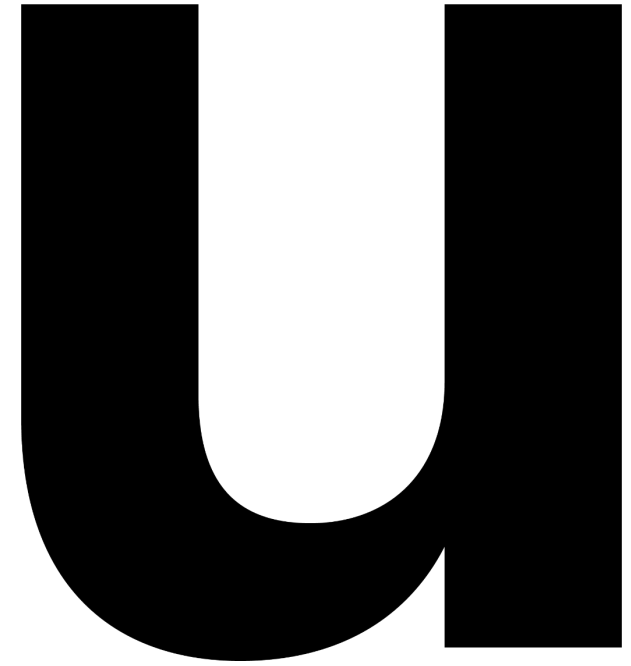
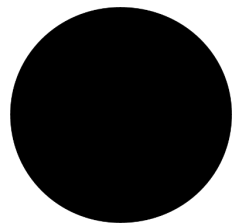


Archaeology and digital techniques in relation to the Valetta Convention, within the Brussels Capital Region, Belgium



Dr. Ann Degraeve, Head Dept Archaeological Heritage



Article 2 i. Maintenance of an inventory of the archaeological heritage

Article 7 i. To make or bring up to date surveys, inventories and maps of archaeological sites in the area within its jurisdiction



<https://gis.urban.brussels>

urban.brussels



Detail from the archaeological inventory for the medieval heart of the commune of Anderlecht:

- pink: area with high archaeological potential (site extension area)
- red: buildings, located
- blue: ancient waterways
- orange: ancient roads

Vectorisation of the primitive land register of Bastendorff (1821-1836) (blue and orange) and georeferencement to current land register (grey)

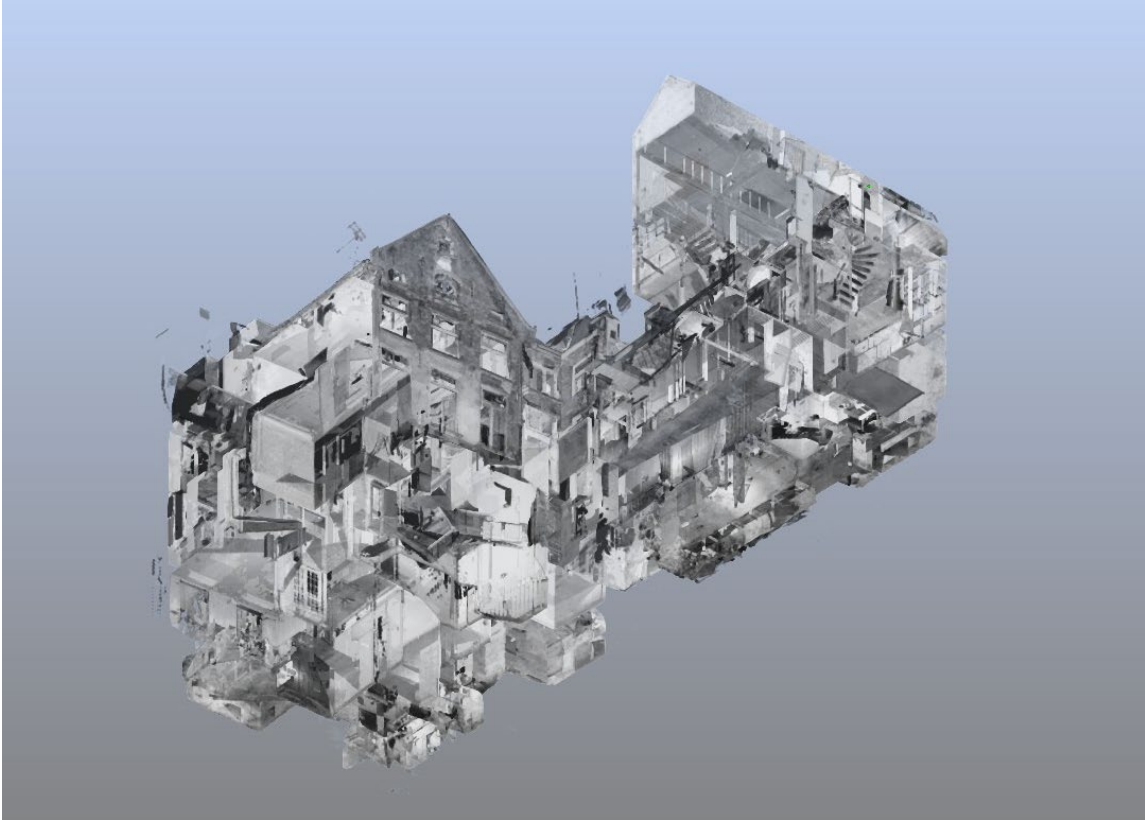


Open data > Open GIS: free downloadable

Article 7: Collection and dissemination of scientific information

On-site use of digital tools to preserve the archaeological heritage (photogrammetry, 3D Scan):

- Enhancement of quality of scientific registration in the field (before destruction or restoration) and the research possibilities afterwards
- “Time is money” (relation developers – archaeologists)



3D scan of a building, rue de l'Assaut, Brussels



Photogrammetric capturing of a façade near the Grand-Place, Brussels

<https://ariadne-infrastructure.eu/portal/>



ARIADNEplus provides services for archaeologists to enable access to the research infrastructure. The ARIADNE Portal provides the main point of access for searching and browsing datasets and new services for processing and publishing archaeological datasets online.

ARIADNE Portal

The ARIADNE Portal is available. The Portal brings together existing archaeological research datasets from ARIADNE partners so that researchers can browse and access the various distributed datasets for use in their projects.

ARIADNE Services

The portal also provides a point of access for the new services developed by the project.

[Guide](#)



<https://sketchfab.com/>

Article 8: National and international exchange of elements of the archaeological heritage



<https://collections.heritage.brussels/>

Région de Bruxelles-Capitale
INVENTAIRE DU
PATRIMOINE MOBILIER

Inventaire
Collections
Cartographie
Liens
Me connecter

Recherche rapide **ok**

Recherche avancée **+**

A A A NL

Suggestions

D'AUTRES OBJETS DU MÊME TYPE



D'AUTRES OBJETS DE LA MÊME COLLECTION



Contact - Notice légale - Politique de confidentialité
© patrimoine.brussels - Credits



PALAIS DU COUDENBERG

Verre

Datation
Entre 1500 et 1550

Article 9: *Promotion of public awareness*



16th century panorama towards the rue Haute / city center from the top of the Halle Gate; development based on historic documents and archaeological research : <https://www.b71.be/project/bruxelles-en-1550/>

