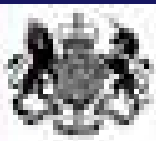




Historic England

ELC: Update from England

Dr Vince Holyoak
Head of National Rural & Environmental
Advice



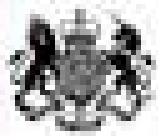
Department for
Communities and
Local Government

National Planning Policy Framework
(2012) retains presumption in favour of
sustainable development

In order to meet sustainability test must
demonstrate that proposals do not cause
harm/substantial harm to assets



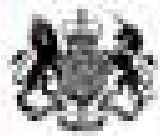
Lyveden New Bield – Barnwell Manor Wind Farm



Department for
Communities and
Local Government

Localism Act 2011 gave enhanced role to
communities in the planning process
through Neighbourhood Plans

New Bill before Parliament will require
Local Planning Authorities to have regard
to Neighbourhood Plans



Department for Communities and Local Government

Notes on Neighbourhood Planning

October 2016, Edition 18

Produced by the Department for Communities and Local Government

The new Neighbourhood Planning Bill goes before Parliament

Neighbourhood Planning Bill 2016-17

Type of Bill: Government Bill
Sponsor: Sajid Javid
Communities and Local Government

Progress of the Bill



For Neighbourhood planning advice and support visit

<http://mycommunity.org.uk/helpcentre/>

Telephone 0300 020 1864

#NeighbourhoodPlanning



Department
for Culture
Media & Sport

- Discover England Fund – encouraging areas outside London to be visited and appreciated
- Great Place Scheme – Looking at how cultural investment in places can align with and support wider objectives
- Heritage Action Zones – to manage change and make historic assets more productive in areas of growth



Department
for Environment
Food & Rural Affairs

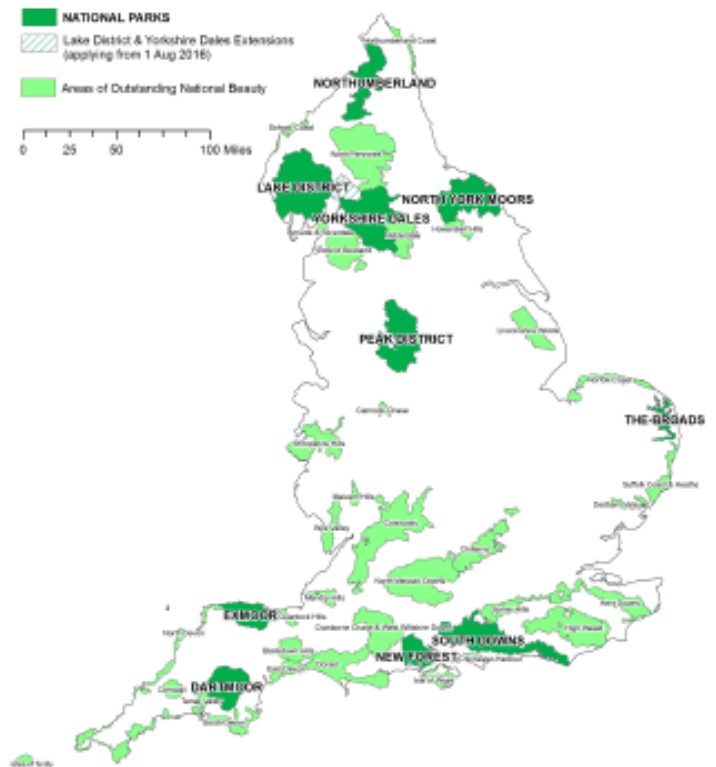
- **Protected Landscapes** – National Parks and Areas of Outstanding Beauty
- **Natural England** – responsible for nature, public access and landscape
- **Environment Agency** – protects and enhances the environment
- **Forestry Commission** – manages public forestry estate and UK Forestry Standards

8-Point Plan for England's National Parks

March 2016



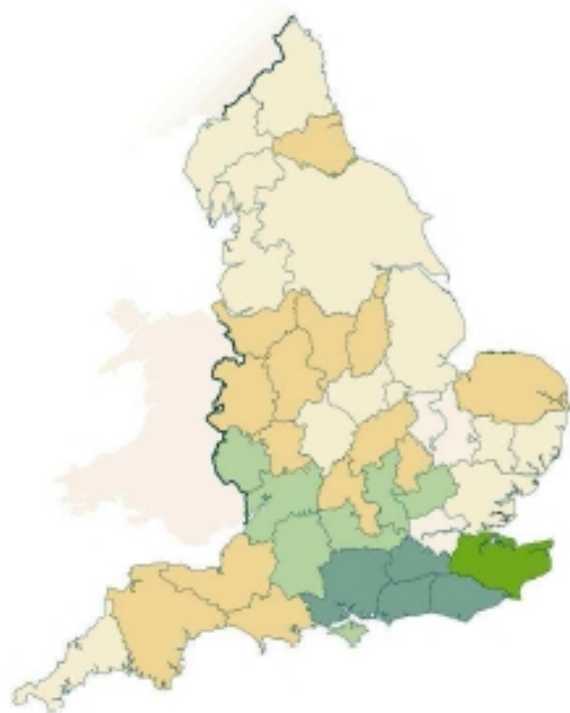
Designated Landscapes in England



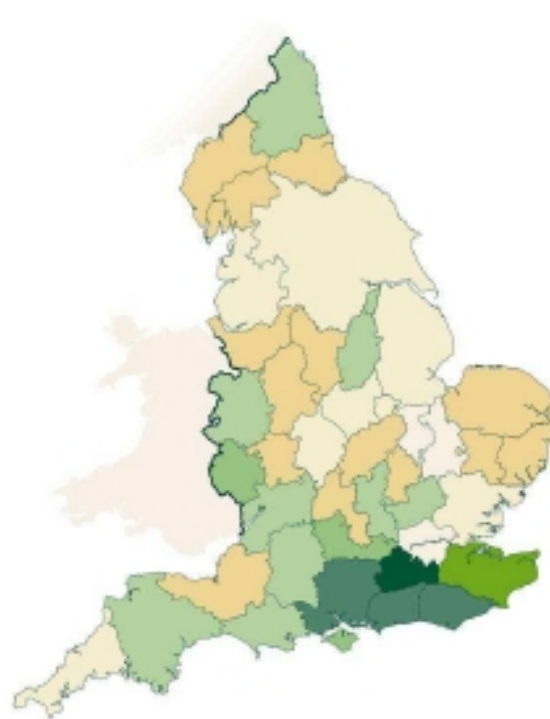




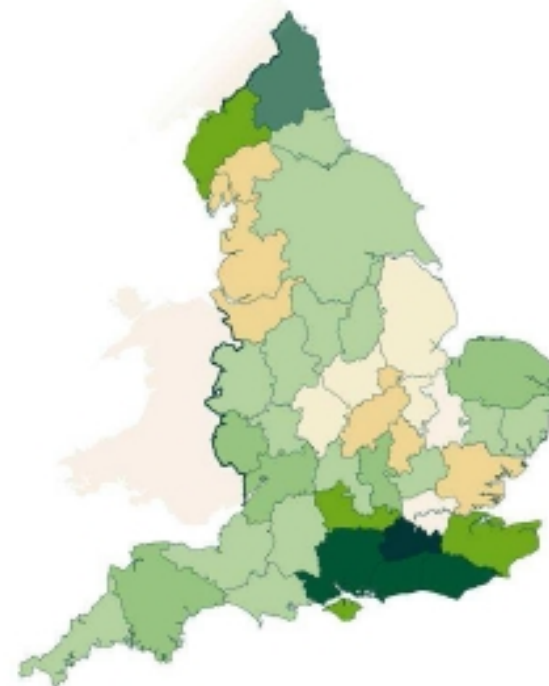
Woodland cover for England



1895



1947



1998

Priority 4 of the Article 5 *Union Priorities for Rural Development:*

Restoring, preserving and enhancing ecosystems dependent on agriculture and forestry, with a focus on the following areas:

- (a) restoring and preserving biodiversity, including in Natura 2000 areas and high nature value farming, and the state of European landscapes

European Agricultural Fund for Rural Development:

Paragraph 24: The development of local infrastructure and local basic services in rural areas, villages and activities aimed at the restoration and upgrading of the cultural and natural heritage of villages and rural landscapes is an essential element of any effort to realise the growth potential and promote the sustainability of rural areas.

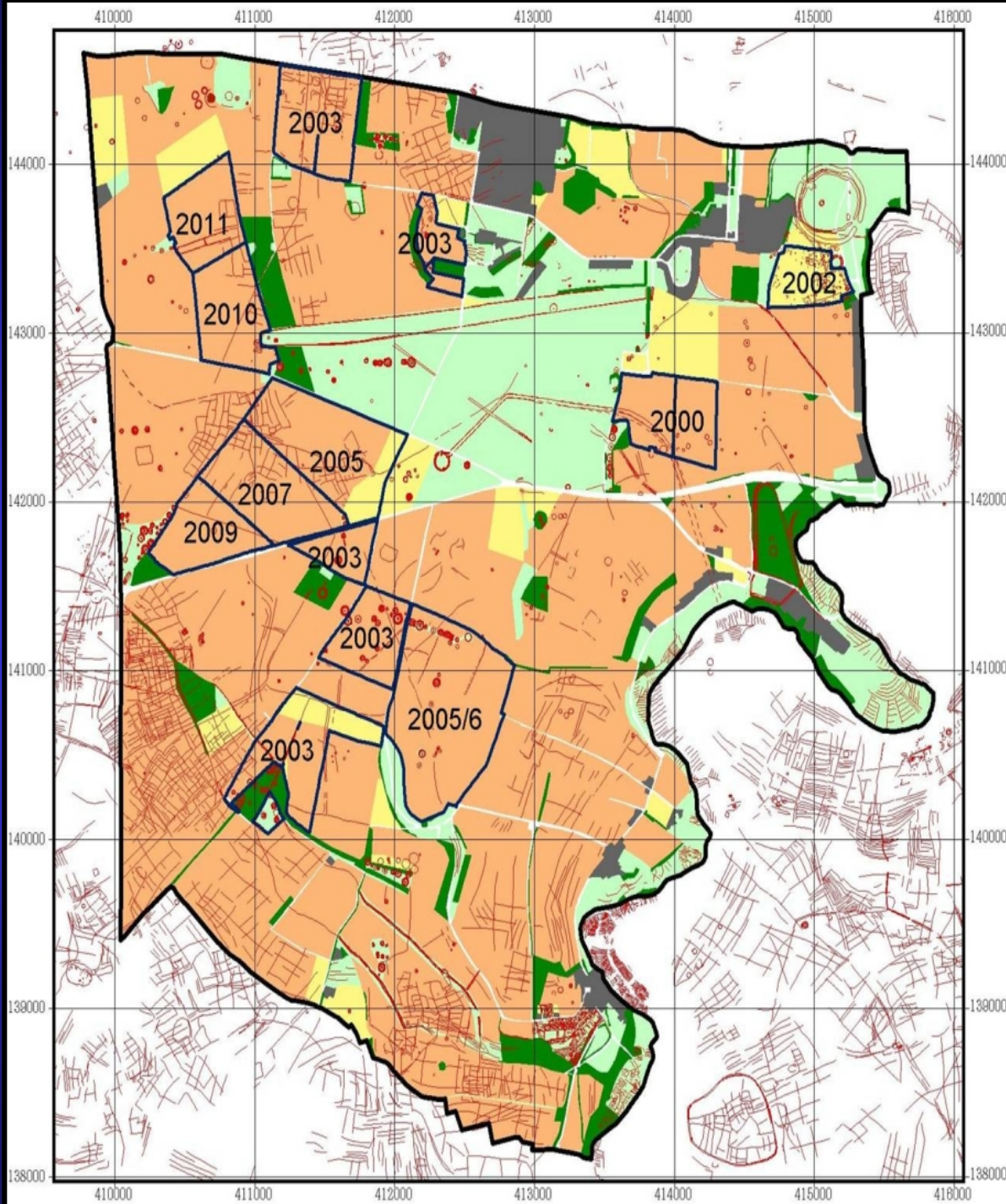
European Agricultural Fund for Rural Development:

Paragraph 28: Agri-environment-climate payments should continue to play a prominent role in supporting the sustainable development of rural areas and in responding to society's increasing demands for environmental services. They should further encourage farmers and other land managers to serve society as a whole by introducing or continuing to apply agricultural practices contributing to climate change mitigation and adaptation and compatible with the protection and improvement of the environment, the landscape and its features.

European Agricultural Fund for Rural Development – Results from England

- **70% of agricultural land under agri-environment agreements**
- **2,200 protected (Scheduled) archaeological sites been placed under management options to improve their condition**
- **29,300 Ha of archaeological sites have had the impact of cultivation reduced or removed**
- **89,000 Ha of archaeological sites in grassland being managed more effectively**
- **Represents £280 million of investment between 2005-2024**
- **“No Detriment” rule – achieving one environmental objective should not prejudice another**





Grass restoration in the Stonehenge World Heritage Site

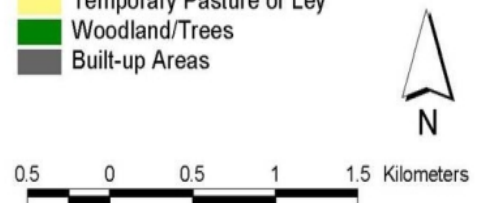
The areas indicated have been or will be restored to grass as part of the Countryside Stewardship agreements signed since 2002 and the National Trust trial carried out in 2000.

Overall more than 25% of the land currently under cultivation will be restored to grass in the next 10 years.

Additional areas may be considered in the future after negotiation with the landowners.

- World Heritage Site boundary
- Recorded Archaeology
- Grass restoration carried out / planned in

- Land Use*
- Arable
 - Permanent Pasture
 - Temporary Pasture or Ley
 - Woodland/Trees
 - Built-up Areas



Produced by Paul Cripps, Centre for Archaeology, October 2004.

Land use mapped by Chris Blandford Associates for the Stonehenge Management Plan (2000) from interpretation of 1991 and 1995 colour aerial photographs at 1:10,000 scale. Recorded archaeology based on Wiltshire County Council Library and Museum Service Sites and Monuments Record.

