

Integration of Landscape in the Sphere of Yerevan City Planning and Tourism Development

Sirekan Ohanyan

Director of "Yerevan Project" CJSC of Yerevan Municipality
Doctor of architecture
Professor of National University of Architecture and Construction of Armenia

Zaruhi Mamyan

Head of the chair of urban planning in National University of Architecture and Construction of Armenia,

Doctor of architecture

Associate professor,

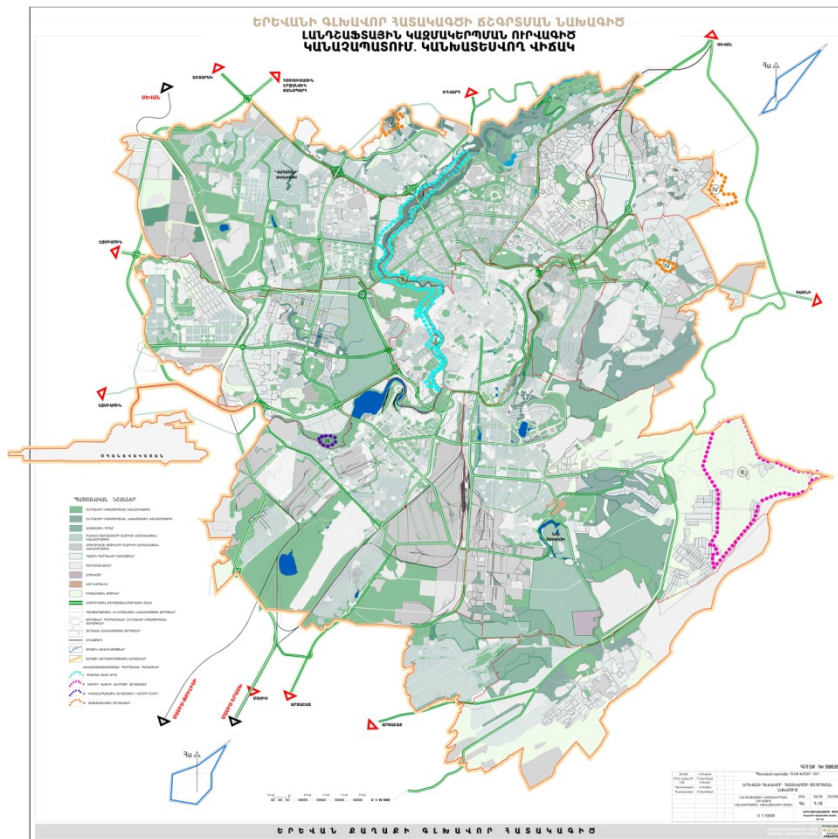
Chief project architect of the major city plan of "Yerevan Project" CJSC in Yerevan Municipality

A city is the surroundings which a person with the purpose of adjusting the natural landscape tried to create as a convenient and satisfactory living place by making functional changes. So, a city is the surroundings where a person can exhaustively secure the whole specter of exercising his/her rights that is of job, leisure, entertainment, intellectual and spiritual free expression.

The advantage of a city is that it can suggest more than wild or adjusted nature. Cities are the attractions in which all kinds of technical and cultural investments are put for years and it gives the city an economical and touristic value. Due to flexible tourism cities have new attractions with which not any countryside nor natural surroundings can compete. The logical synthesis of city planning, architecture, culture, urban economy and mode of life, national and life form customs and requirements of the time can lead to incomparable results with the complete integration of landscape component. It is also a favorable resource for city economy functioning.

Landscape component must be a constituent part of architectural and constructional, engineering and transportational infrastructures, historical and cultural heritage, touristic and environmental protection and plans and projects of other spheres taking as a principle and specifying mutually agreed and resolved decisions concerning landscape quality within the scope of territorial planning.

In the conception of tourism development of the Republic of Armenia 2030 approved by the fifth point of RA N6 governmental record of February 13, 2008, Yerevan is foreseen to continue to be the base of the whole touristic activity in the republic and to serve as the main entrance to the country.



Currently the review of the main strategic directions of the major plan of Yerevan 2005-2020 is foreseen, the most important components of which is the specification of the planning of the capital city tourism development and organization of city building.

That is:

1. Analysis of touristic description and issues of Yerevan
2. Making inventory and assessment of touristic resources and potential
3. Organization of the territorial planning of tourism development
4. Specification of the city building structure of tourism development of Yerevan
5. processing of an action plan
6. Processing and implementation of investment program

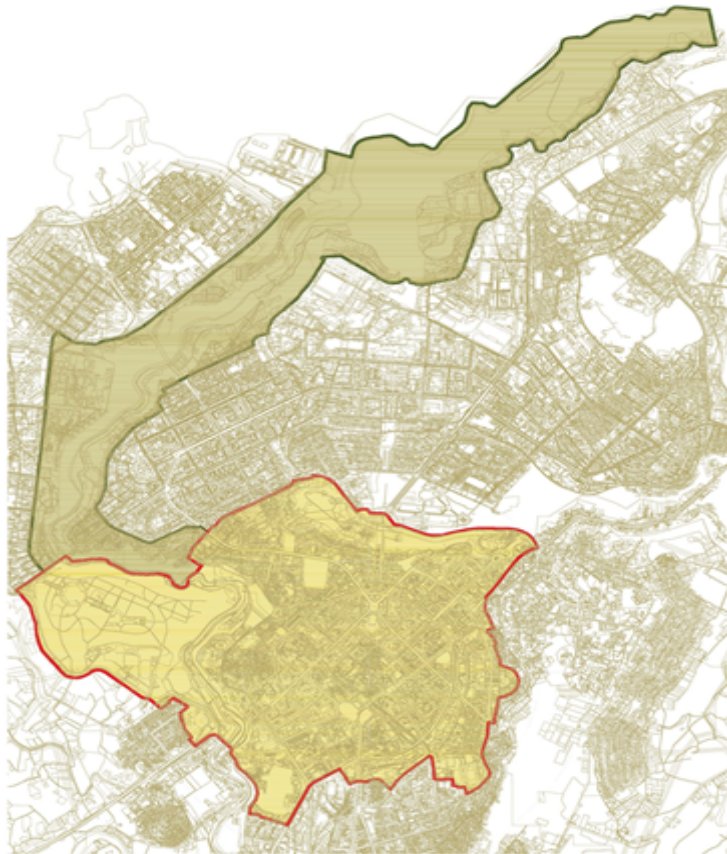
Implementation of above mentioned points supposes that

- It is important to make utmostly exhaustive inventory for tourism resource and potential assessment of Yerevan, processing of distribution schemes, complex assessment of touristic venues, taking account of natural factors (natural landscape, natural-climatic conditions, relief, soil, water and mineral resources, biodiversity and so on) and human factors (operational areas, historical environment, historical and cultural real monuments, engineering and transportation infrastructure, touristic venues and so on).
- In territorial planning documents (projects of territorial plans, major plans and girding and building projects), mandatory involvement of touristic and landscape components.
- Green belts of the city (parks, boulevards, groves, yard areas, woodlands surrounding the city) are liable to reconstruction, broadening and re-creation. It is needed to add and utmostly improve and plant greenery in semi-parks and parks close to the streets that give special friendly colour to the city.

- City building investment programmes direct exclusively to the improvement of the quality and welfare conditions of the city habitat harmonizing them with the principles and ideology of "Stable cities. Green architecture", "Smart cities", "Green city building" and "European Convention of Landscape".

THE BORDERS OF DOWNTOWN AND THE NEIGHBORING BUFFER (LANDSCAPE PROTECTION) ZONE

- Downtown border
- Buffer (landscape protection) zone



In case of appropriate design of the landscape of streets, parks, historical, cultural and archaeological monuments existing in the city, can be a big potential for the development of touristic amenities in the city structure.

From the economical viewpoint the following objects can serve as investment programs at the same time.

1. Historically built zones
 - The part of Hanrapetutyán Alaverdyan street and Tigran Mets Avenue
 - "Dzoragyugh" ethnic district
 - Historical and cultural complex museum "Erebuni" dating back to 782 B.C.
 - District "Kond"

- Environmentally protected landscape zone of neighbouring areas of Tsitsernakaberd and Great Genocide memorial
 - landscape Protection zone of neighbouring "Hakhtanak" park and Azatutyan Avenue
 - landscape Protection zone of Myasnikyan Avenue and Old Norq historical residence
 - landscape Protection zone of Komitas Pantheon and park
 - Natural and historical zone neighbouring Karmir Bridge Hrazdan Gorge
 - Territory and "Yerablur" Pantheon
2. Reconstruction, broadening and re-creation of city green areas: parks, boulevards, groves, yard territories and forest areas
- Hrazdan gorge
 - "Dalma Parks"
 - Area of "Nor Arabkir" memorial and the neighbouring park
 - Landscape zone of "Paros" hill
3. It is necessary to add the number of streets, pedestrian streets, semi parks /cordonniers/ and groves (Mashtots and Komitas Avenues, Saryan, Amiryan, Teryan, Abovyan, Tumanyan, Halabyan and other streets) which give us special urban friendly colouring trying to do utmostly everything to improve and plant greenery there.

Besides this, by Yerevan Municipality 2016-2017 city building sphere programs directed to the development of Yerevan development and programs that are directly related to tourism development and landscape protection and the issues of "regeneration" are to be discussed in the frameworks of cooperation between Leon and Yerevan cities together with Leon Municipality and city building agency. The issues of "regeneration" are:

- Processing of Yerevan city building regulations
- Processing of city building conception of tourism development in Yerevan
- The opportunities and ways of reconstruction of historical district "Kond" in Yerevan
- Creation of a historical and cultural grove complex "Dalma Gardens" of Yerevan".