



**Peter Ros
Patricia Braaksma
Inge van Heck**

HOLLANDSE WATERLINIE® NATIONAAL PROJECT

Content

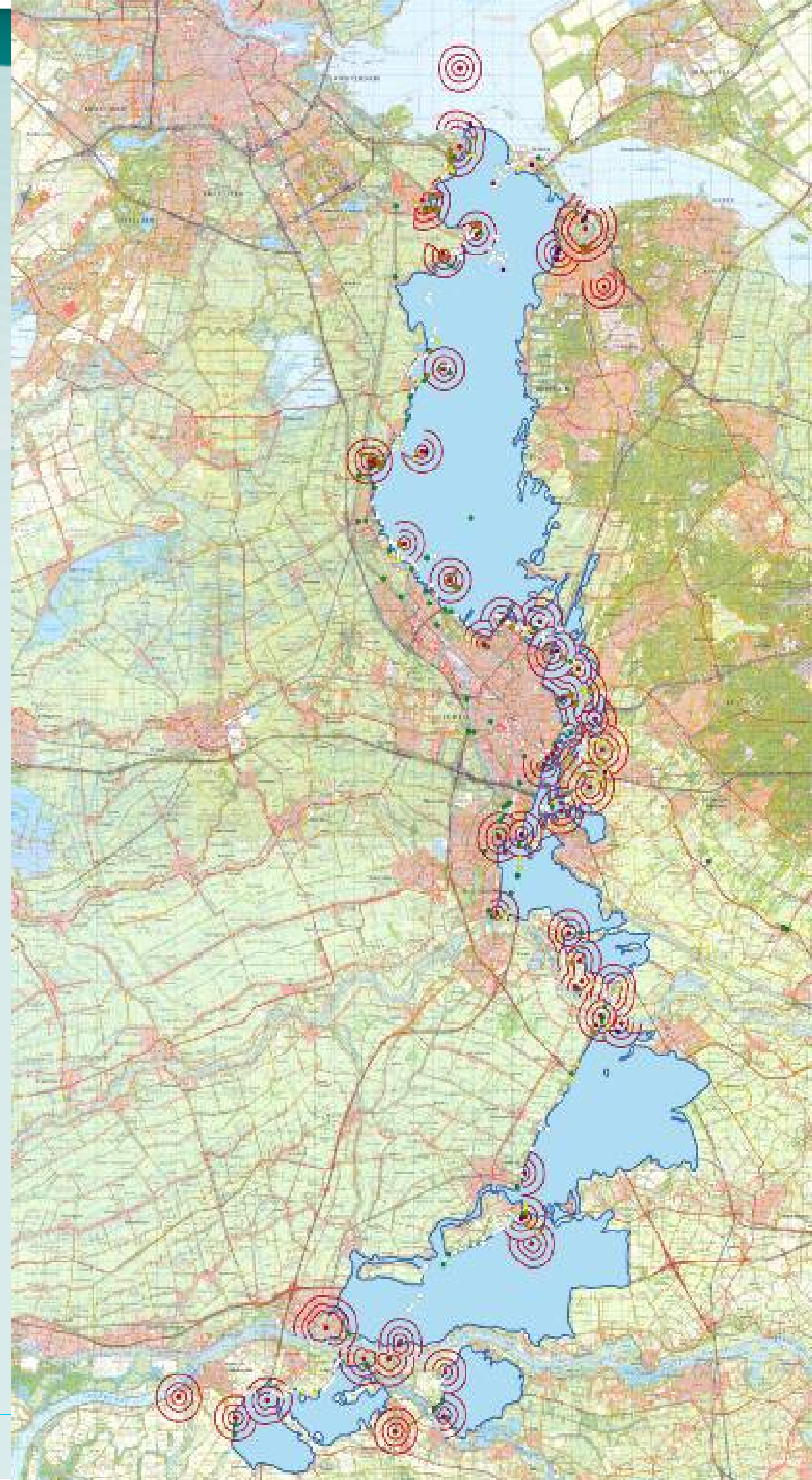
1. What is the New Dutch Waterline?
2. Present organisation: the trick of corporation
3. Best Practices of economic re-use
4. Example of implementing spatial policy

What is the New Dutch Waterline?



Facts Defence Line

- length: 85 kilometres
- width: varies from 3 to 5 kilometres
- 7 basins of inundation field
- 2 castles
- 5 fortified cities
- 53 forts with "the Prohibited Areas"
- bunkers, group shelters, sluices, canals
- totally about 1000 elements (80% is still in good condition)



How was it working ?

Defence line

Inundationfields

Fort

Enemy

**Western part of the
Netherlands**





Inundation plains
around fort Spion

177/59 \$ac
s70:08/17:1000:09/1500/17:005
177/59 \$ac

Water as chief main of defence



Innundation
flood in
wartimes



All objects



Inundation canal



Fort



Bunkers

Fortresses at the 'weakest' places

Dry areas, rivers, canals, dikes, roads
and sluices



But... the weakness of
the defence system









Destruction and decline



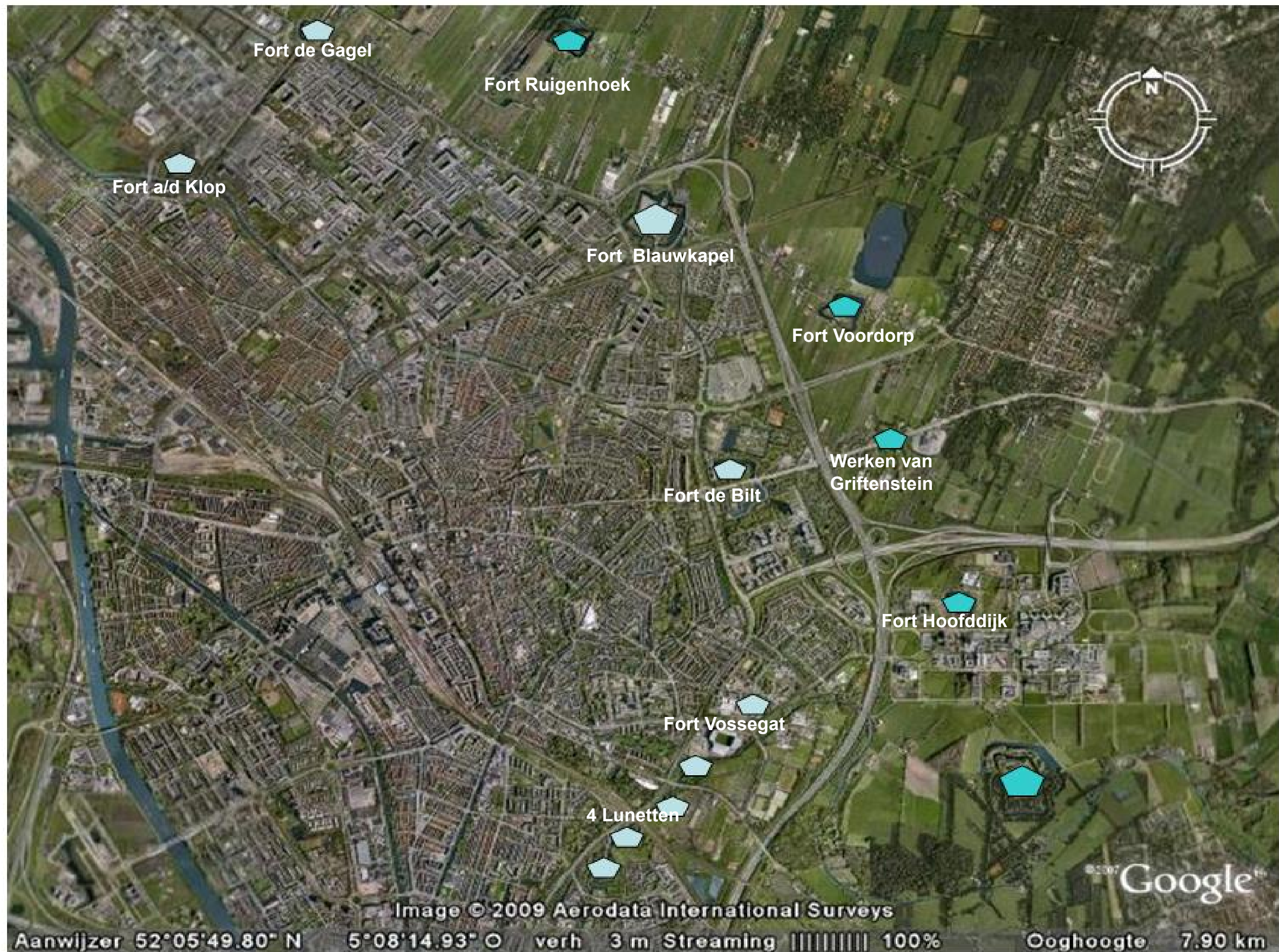
Impact of new towns and infrastructure

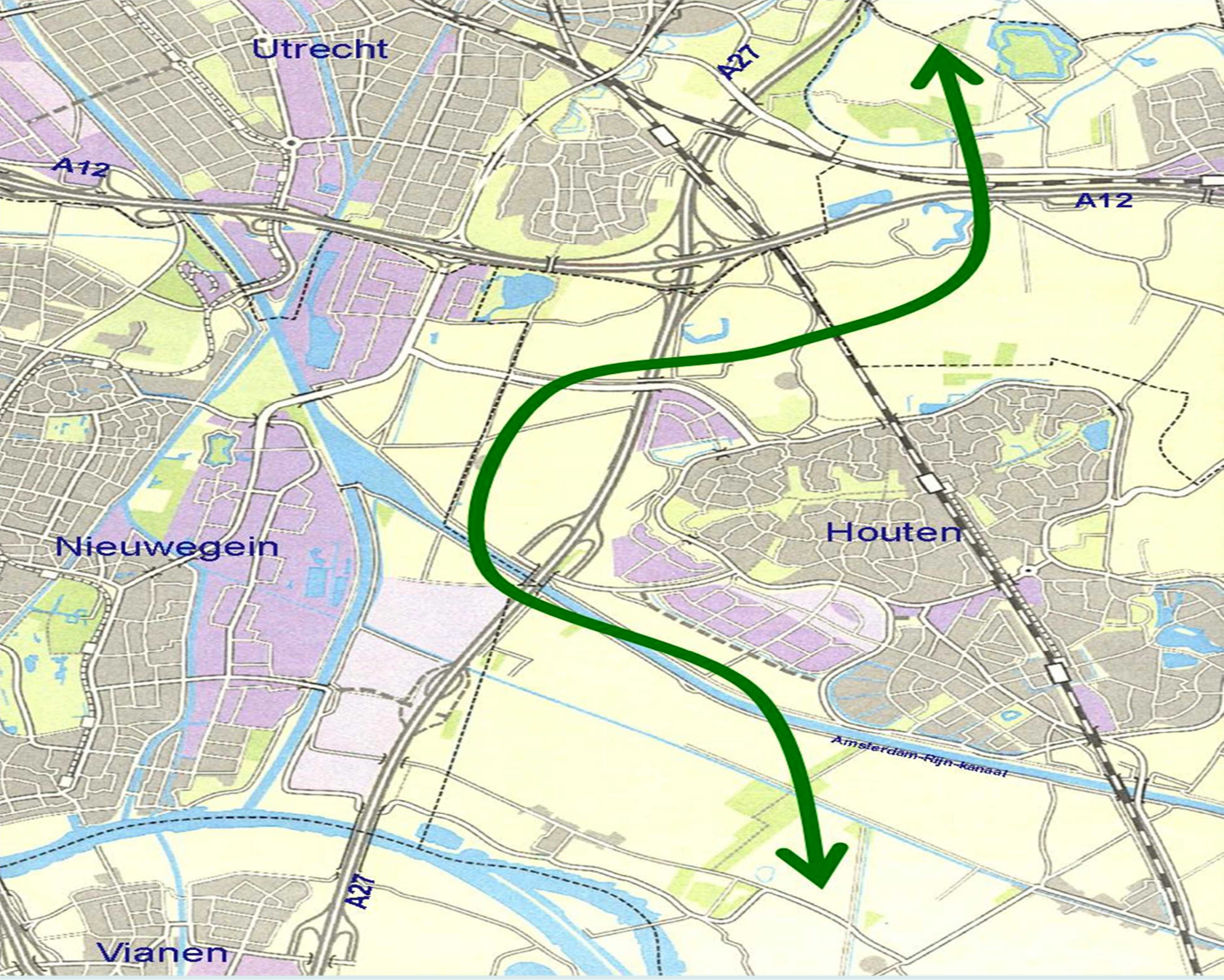


Rural context



Protected by law





Utrecht

A27

A12

A12

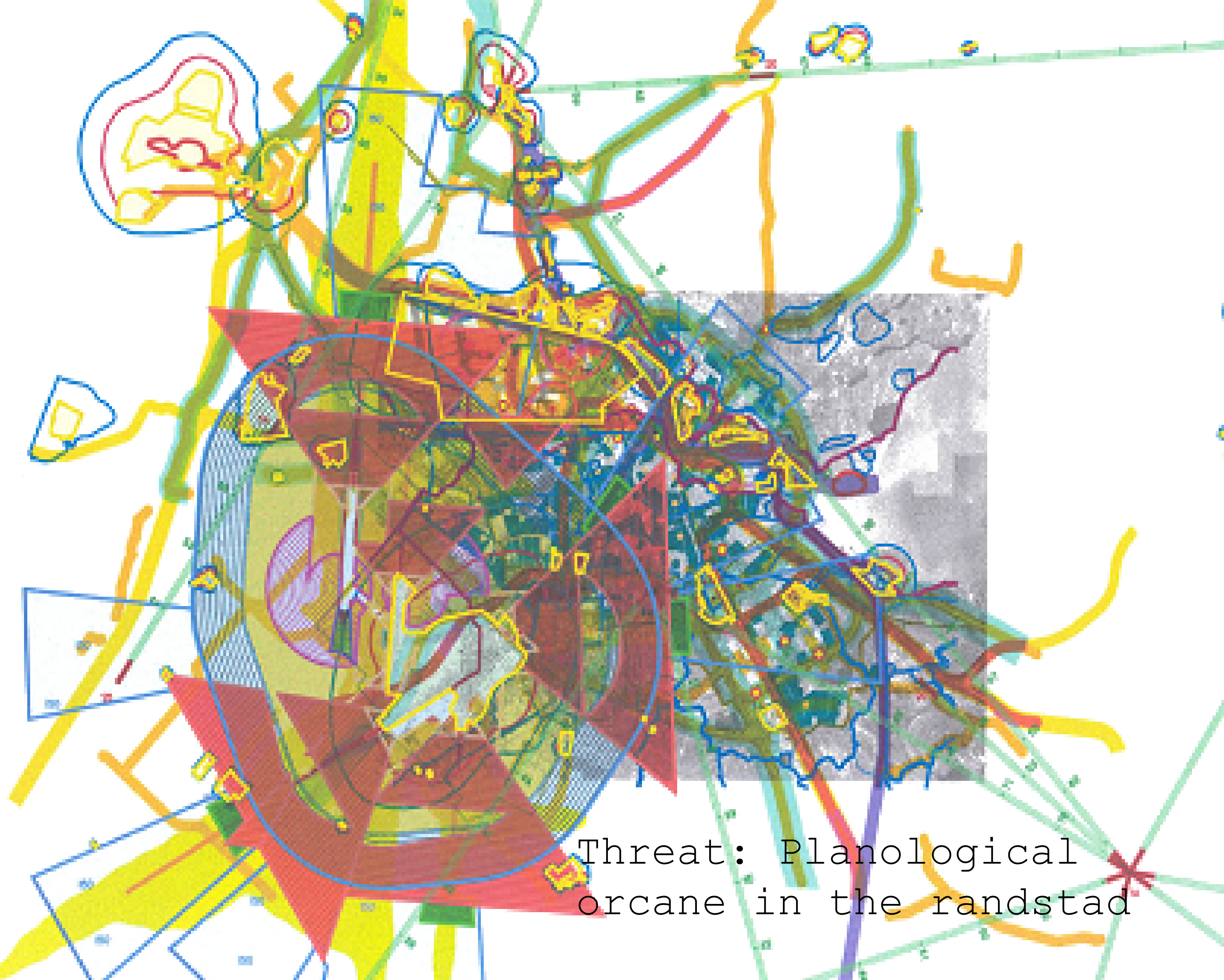
Nieuwegein

Houten

Amsterdam-Rijn-kanaal

A27

Vianen



Threat: Planological
orcane in the randstad

Project organisation

National Project
organisation:

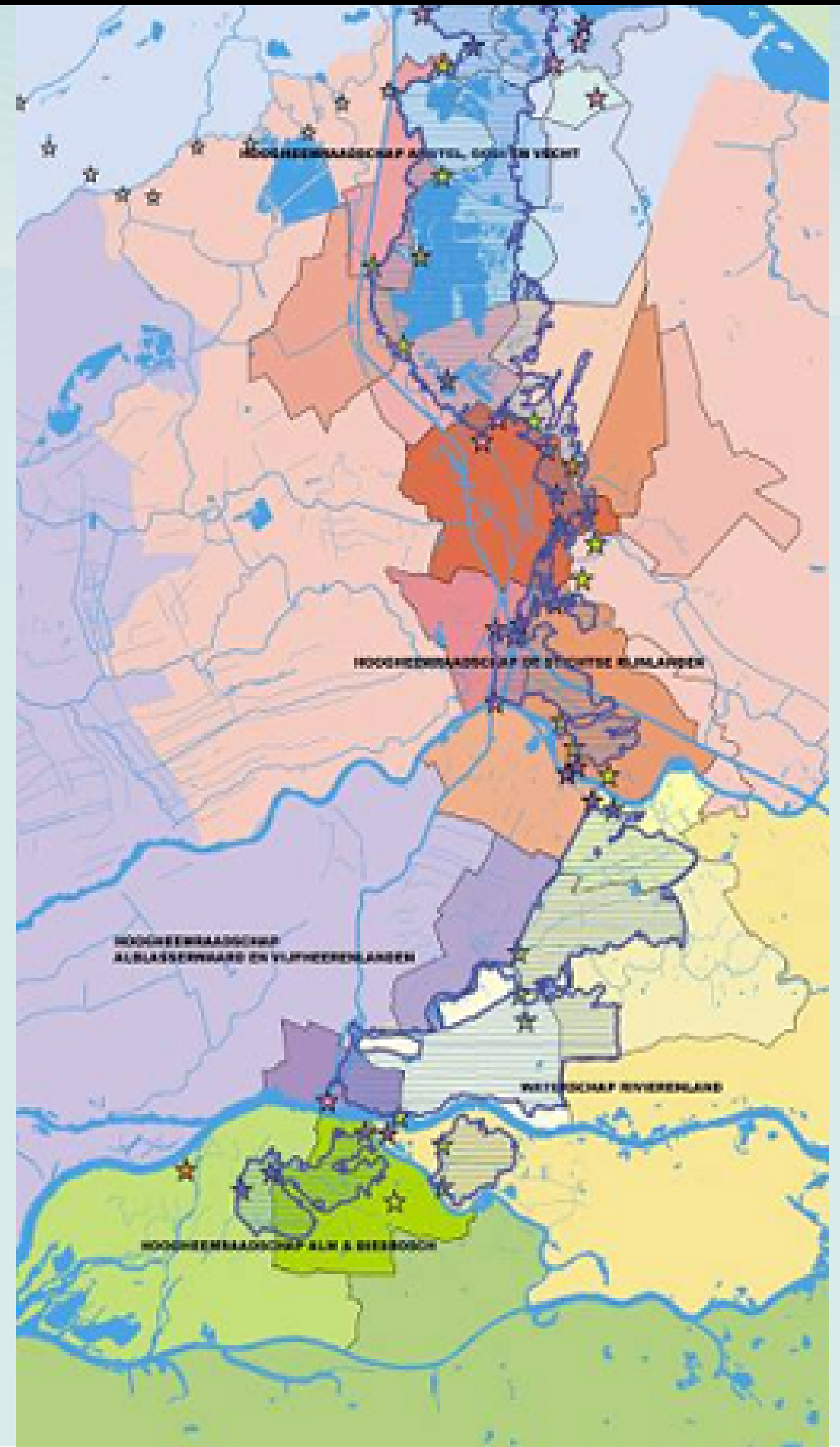
5 national ministries

5 provinces/regions

25 municipalities

3 water organisations

Decentralised to the
5 provinces since
2014: Treaty of
Altena





Cultural Heritage & Spatial Development

“preservation through development”

Cooperate...

...in 1 national Waterline committee
(provincial governors and national
representatives)

...in 7 regional execution committees

...with many private parties (Public Private
Partnership)

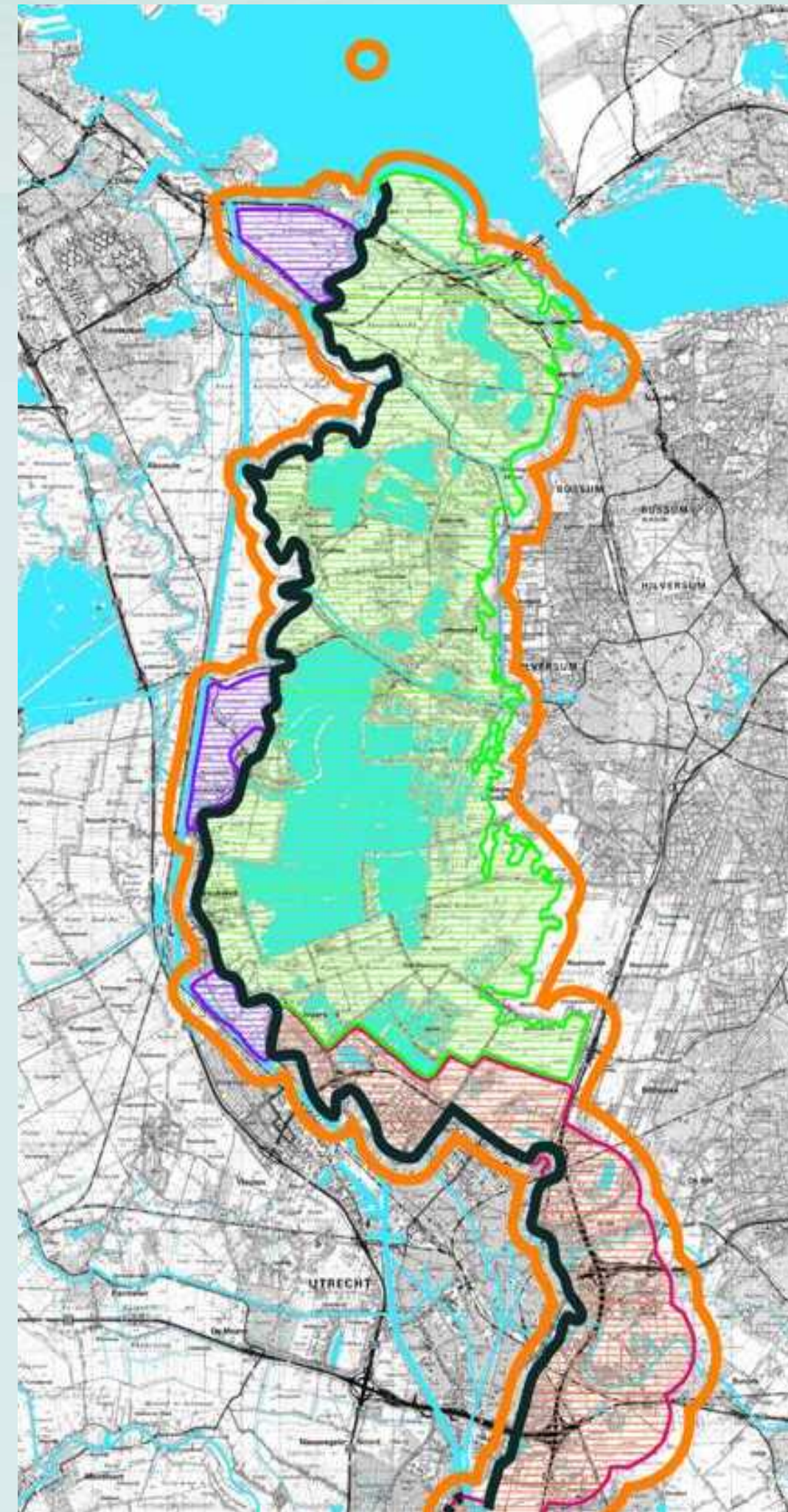
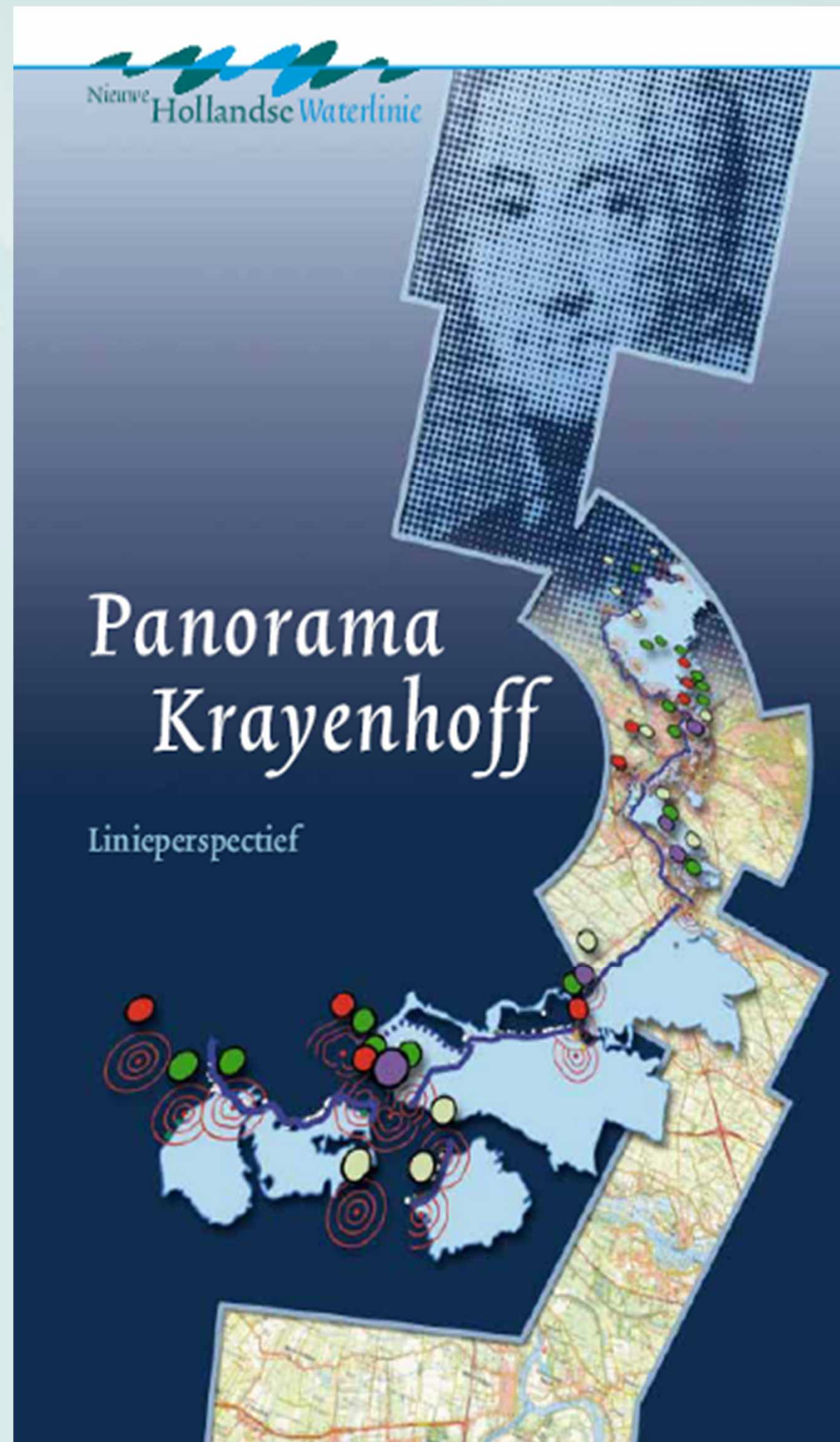


Coordination

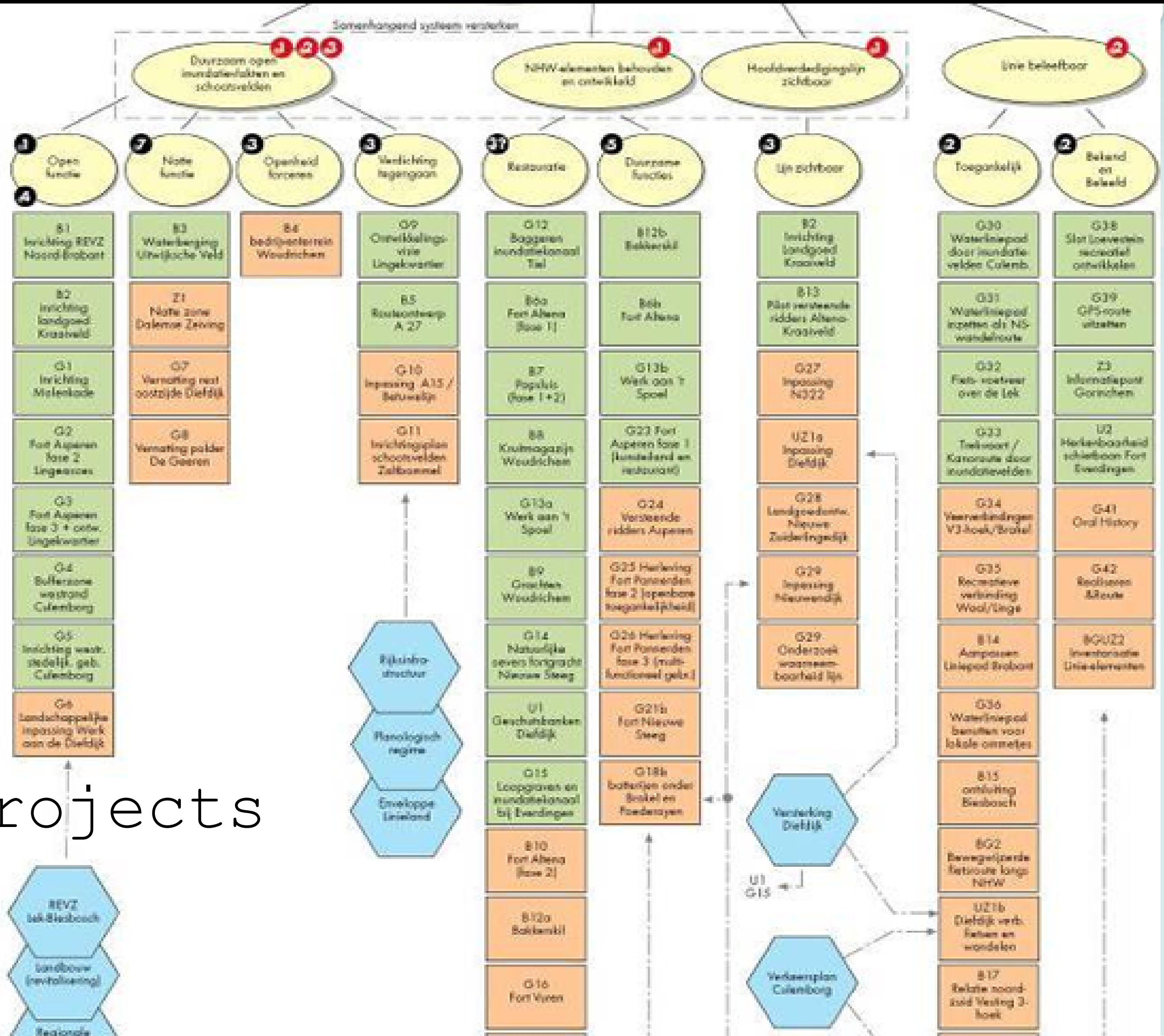
... 1 project office



Linieperspectief `Panorama Krayenhoff` (2000-2004)



2004-2020: Implementation: 200 projects



200 Projects

Restoration projects





Infrastructure

HOLLANDSE
WATERLINIE®
NATIONAAL PROJECT



Recreational projects



Examples of reuse

Education and musea



Fort De Bilt



Nature and recreation





Living and working



Fort Steurgat (1)

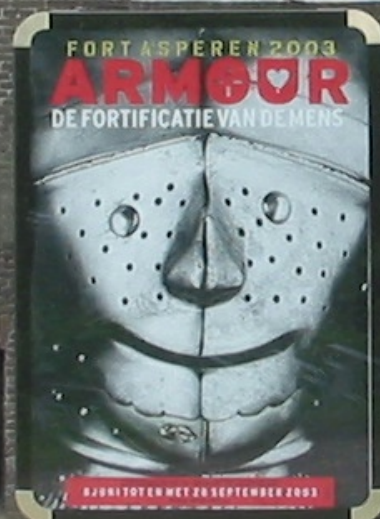


Fort Steurgat (2)



Culture and art





(Wedding) party and conferences



Party's



Fort Voordorp







Fort De Klop: B & B and campingsite







Network for entrepreneurs

- Starting making network in 2008
- Direct and indirect entrepreneurs
- 200 entrepreneurs in the network
- 1st april starting foundation for entrepreneurs
- Result is that they are developing new products...

Education





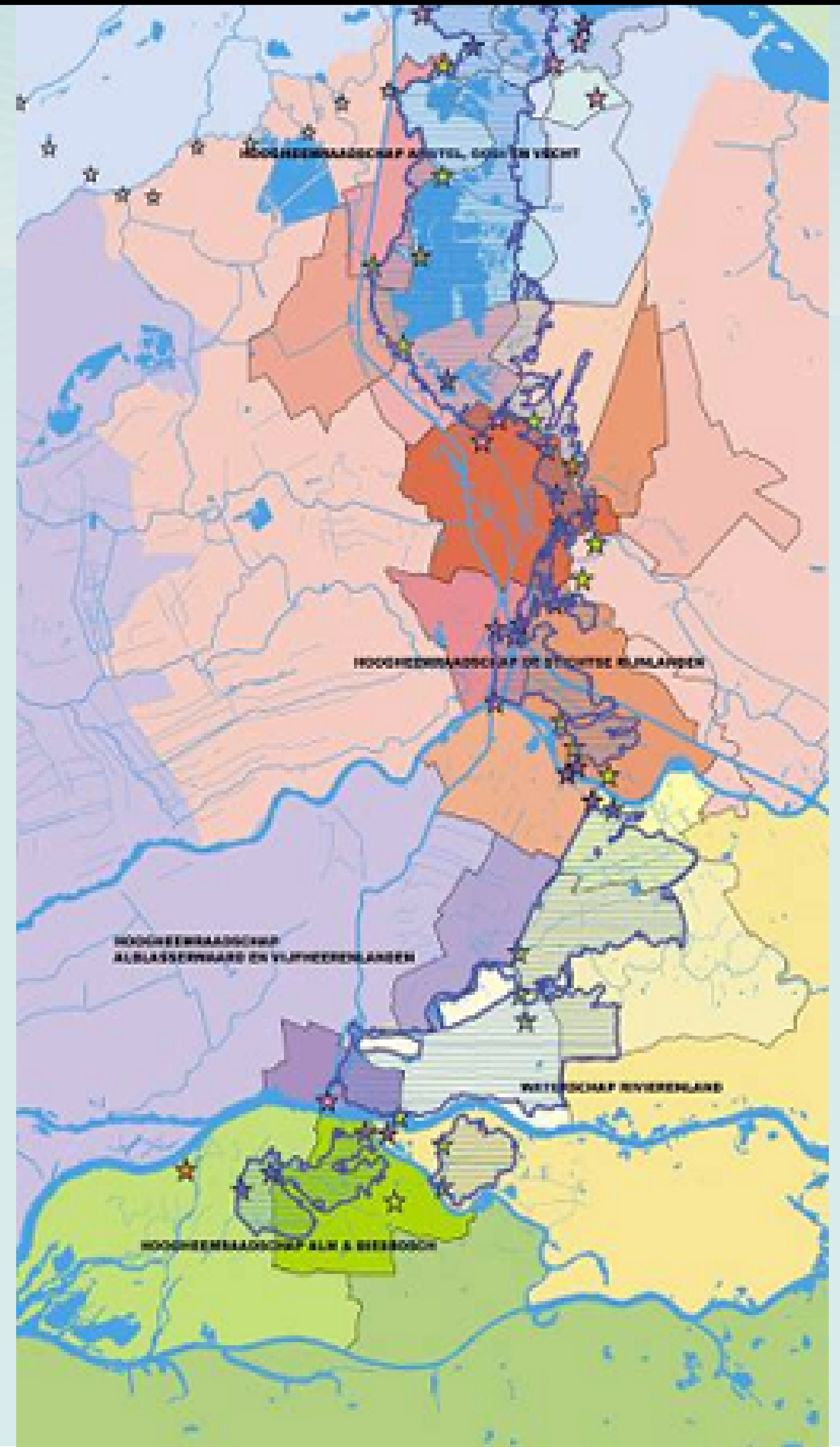
Implementing spatial policy

Since 13-2-2014: Joint protection of the New Dutch Waterline in the future

'Treaty of Loevestein'

- 4 provinces
- 11 municipalities

Uniformity in rules
(before 1-1-'17)



Treaty of Loevestein

- Planning instrument to protect the unique qualities
- Development should be possible
- Strict where necessary, flexible where possible
- Clear to citizens
- 6 uniform zoning plans

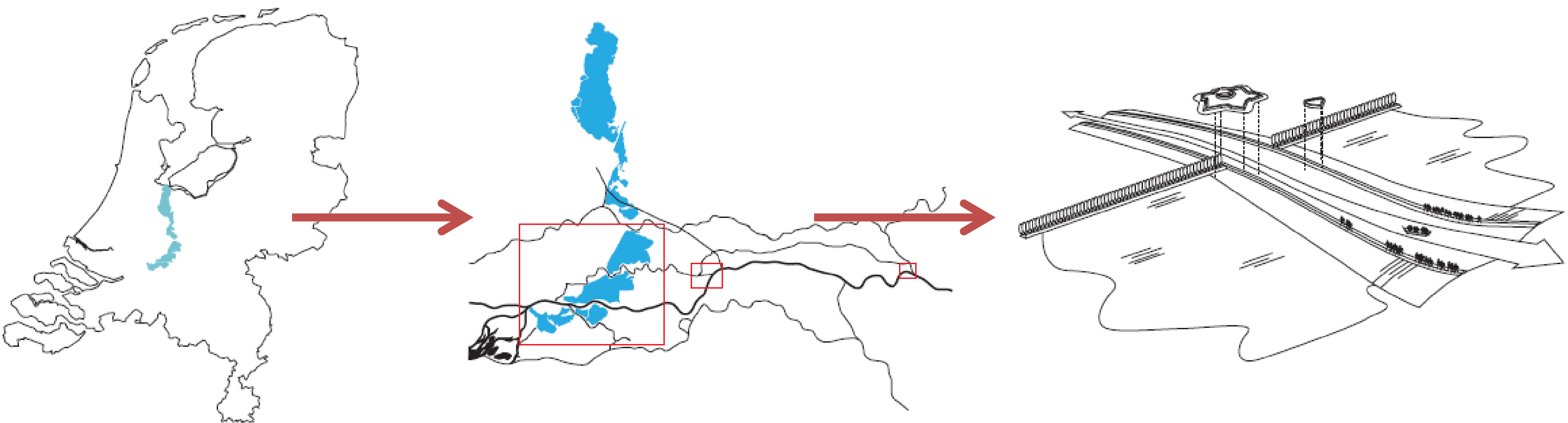
Preservation & development: how

Spatial policy of various government layers

State

Provinces

Municipalities



Concrete at local level (inundation fields)

Core qualities are made concrete

Kernkwaliteiten Nieuwe Hollandse Waterlinie

ten zuiden van de Lek
DEEL I - Nationaal Landschap

handboek voor beschermen én ontwikkelen



Kernkwaliteiten
Nieuwe
Hollandse
Waterlinie

ten zuiden van de Lek
DEEL II - inundatiekom Culmborgervwaard

handboek voor beschermen én ontwikkelen



Kernkwaliteiten
Nieuwe
Hollandse
Waterlinie

ten zuiden van de Lek
DEEL II - inundatiekom Tielerswaard

handboek voor beschermen én ontwikkelen



Kernkwaliteiten
Nieuwe
Hollandse
Waterlinie

ten zuiden van de Lek
DEEL II - inundatiekom Bommelerwaard

handboek voor beschermen én ontwikkelen



Kernkwaliteiten
Nieuwe
Hollandse
Waterlinie

ten zuiden van de Lek
DEEL II - inundatiekom Land van Alphen

handboek voor beschermen én ontwikkelen



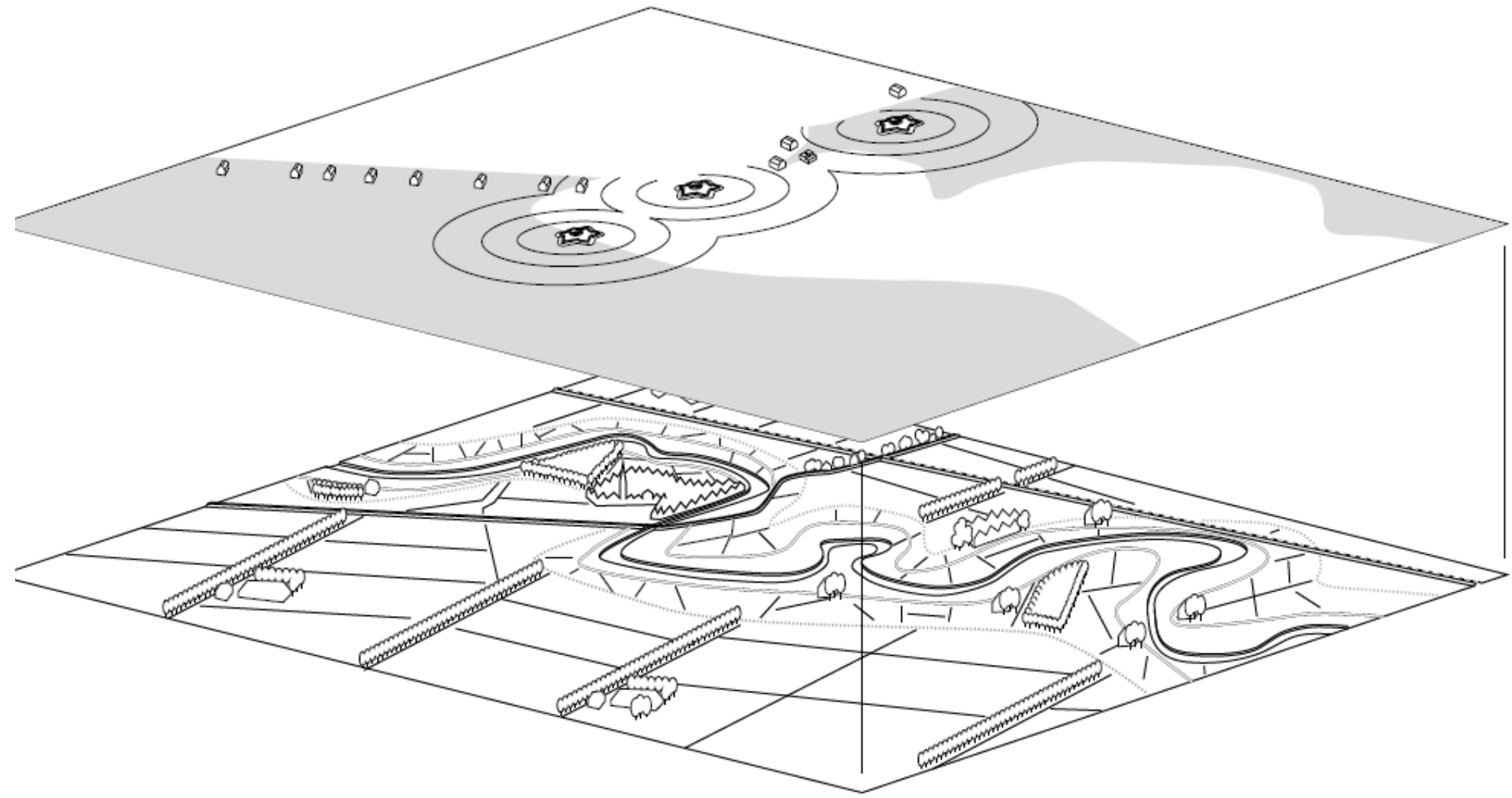
Kernkwaliteiten
Nieuwe
Hollandse
Waterlinie

ten zuiden van de Lek
DEEL II - Fort Pannekoek en inundatiekom Tiel

handboek voor beschermen én ontwikkelen

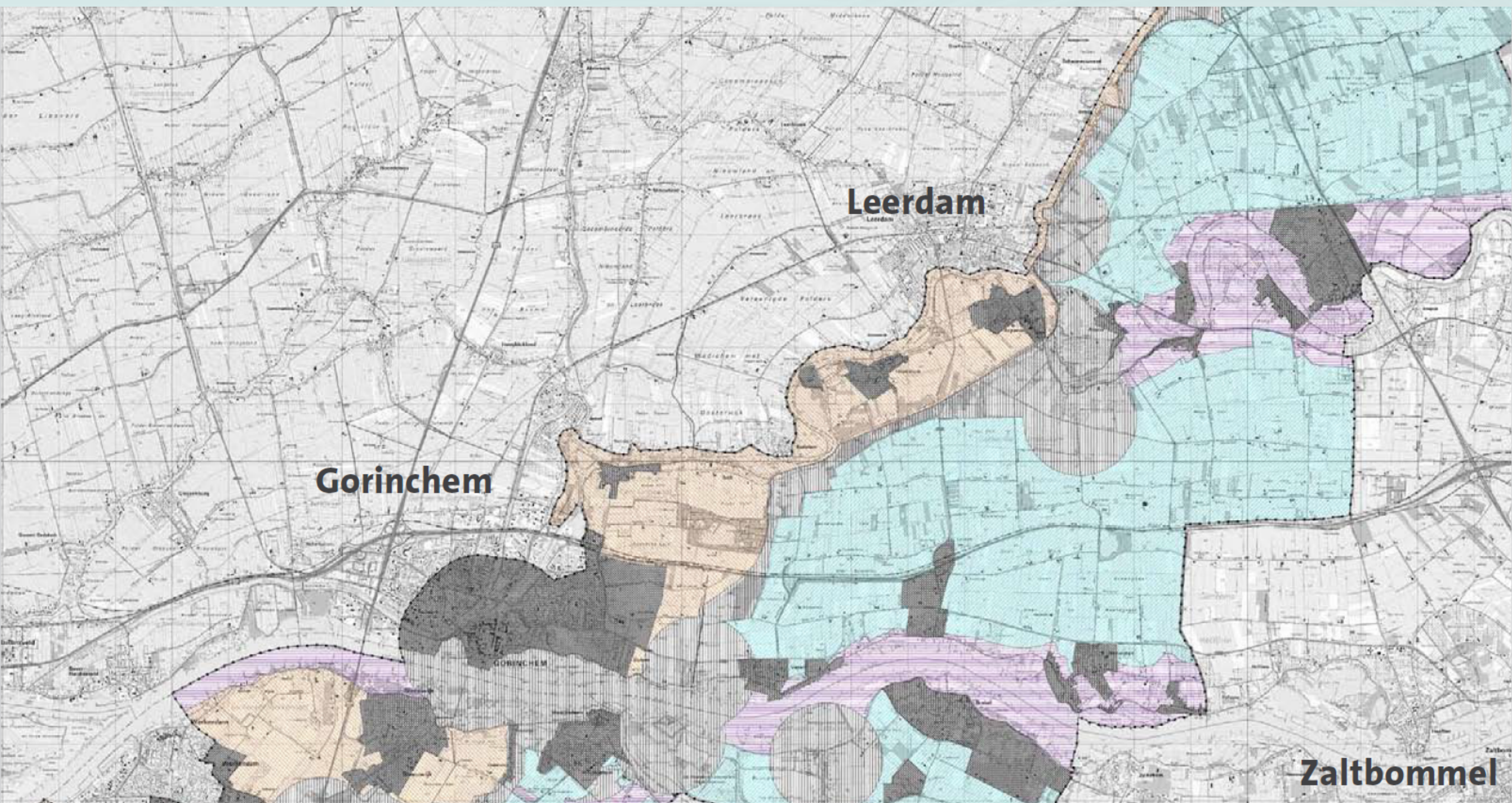


Past, present and future



- Image and description of ensembles
- Core qualities: historic and unambiguous
- Development perspective
- Design guidelines

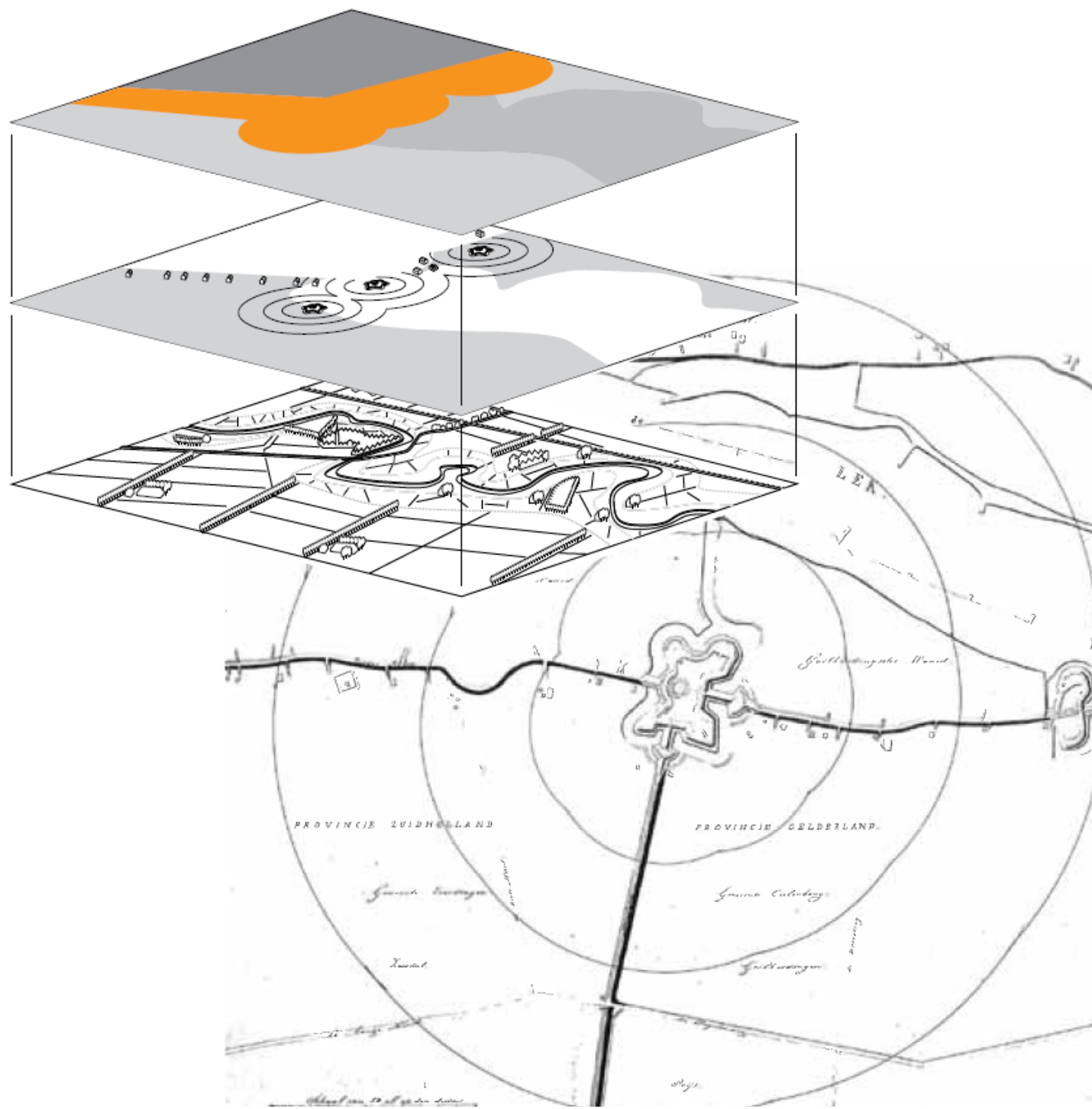
Rules and zoning



Rules and zoning

- 6 uniform zoning plans (since dec. 2015)
- Zoning regulates customization of initiatives
- Careful handling of core values
- Review at the local level -> scaling up of 'heavier' interventions (provinces / national quality team)

Example



- respect values, ensembles, context
- strict policy with regard to condensing



- contemporary economically sustainable
- focus on quality

In practice

Sharing of knowledge

uniform

&

unambiguous

spatial planning



Results until now

- 500.000 visitors a year
- 5 million euro revenue a year
- Landscape with high quality: good for investment climate !!
- Fortification systems are economy !!

Future

Nomination Unesco World Heritage (2019)



You are welcome to visit the
New Dutch Waterline !!!