



## ***Landscape Award of the Council of Europe***

# *Landscape Award of the Council of Europe in Spain*

## **Cultural Landscape National Plan (2006)**



### **General objective**

Preservation and conservation of Cultural Landscape

### **Specific objectives**

Identification and clasification

Social awareness and political recognition

International, national and regional cooperation

## **What is cultural landscape**

*Cultural landscape is the result of the interaction during time of the people in its territory, whose expression is a territory perceived and valued for its cultural qualities, and the result of a process that supports the identity of a community*

# *Landscape Award of the Council of Europe in Spain*

## **Procedure**

Collaboration between the Ministries of Culture and Environment

Call for proposals at national level via:

Autonomous communities

Social networks

Webs of both Ministries

Jury:

- Representatives of both Ministries
- Experts

Resolution

Decision: Spanish candidate

Candidate sent to the Council of Europe



# *Landscape Award of the Council of Europe 2009*

## **“CRISTINA ENEA” GARDEN (CITY OF SAN SEBASTIÁN)**



Designed during the XIXth Century by Pierre Duccase

Donated by the Duke of Mandas to the city in 1918



## **“CRISTINA ENEA” GARDEN**





## **“CRISTINA ENEA”. Global project**

**Ametzagaina Park**



**Larratxo Park**



# Landscape Award of the Council of Europe, 2011

## TOWN, TERRITORY AND LANDSCAPE. A LANDSCAPE AWARENESS PROJECT . CATALONIA



Observatori del Paisatge

Ciutat, territori, paisatge

Documentació Vincles Guia

La Ribera d'Ebre, Actividad 1 Volver a ver la [introducción](#)

Os habéis registrado con el nombre [convidat](#) 



Control Imagen

### Documentación

- [a] Lámina informativa de - [Ver documento](#)
- [b] Lámina de la Ribera d'Ebre - [Ver documento](#)
- [c] Documentos complementarios de la Ribera d'Ebre (en catalán) - [Ver documento](#)



### Descubrid el paisaje de la Ribera d'Ebre

Tenéis que encontrar los seis elementos que están ocultos en el paisaje de la Ribera d'Ebre. Recordad que podéis utilizar los controles de la izquierda para ampliar y desplazar la imagen, así os será más fácil encontrar los elementos ocultos. Una vez hayáis encontrado los seis elementos, tendréis que responder a la pregunta de paso para poder pasar a la actividad 2.

Para desplazarlos por las fichas pulsad Ctrl + cursores.

[Necesitáis ayuda?](#)



### Actividad 1

Pregunta de paso.





## *Landscape Award of the Council of Europe, 2013*

### REVITALIZATION OF THE GERIA: A UNIQUE AND SUSTAINABLE LANDSCAPE. LANZAROTE





## ***Landscape Award of the Council of Europe*** CANDIDATES 2015

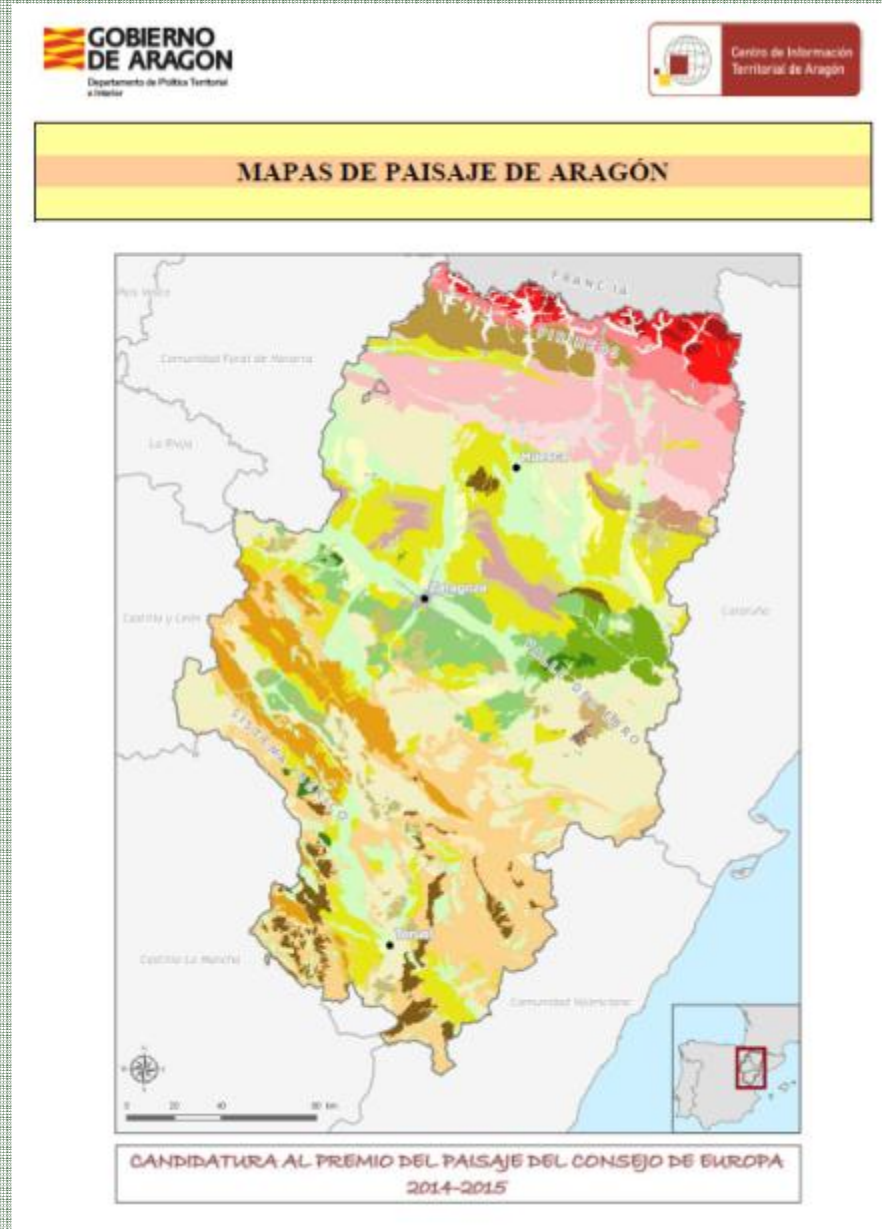
Green path among the olive trees of Jaén



# ***Landscape Award of the Council of Europe CANDIDATES 2015***

## **Landscape maps of Aragón**

Objective: create a tool that permits to manage and tipify the different landscapes of Aragón. The project is divided into 16 chapters or technical documents accompanied by maps at 1:25.000, 1:50.000, y 1:100.000, scale and charts, with an annex of photographs with GIS identification.





## ***Landscape Award of the Council of Europe*** CANDIDATES 2015

Landscape: living, understanding and transformation. Villena (Alicante)



## ***Landscape Award of the Council of Europe* CANDIDATES 2015**

Actions for the conservation and increase of the chameleon population in the Málaga territory

Protected species with habitat in Málaga.

Objective: to establishment the necessary synergies for the conservation of the species, the location of the habitats of interest and of the landscape.





# ***Landscape Award of the Council of Europe*** CANDIDATES 2015

## **LANDSCAPE OF THE MILLENARY OLIVE TREES OF THE SÉNIA TERRIRORY**

**Spanish candidate**

