



EUROPEAN UNION



COUNCIL OF EUROPE
CONSEIL DE L'EUROPE



**Emerald Network
in Moldova - 2015**

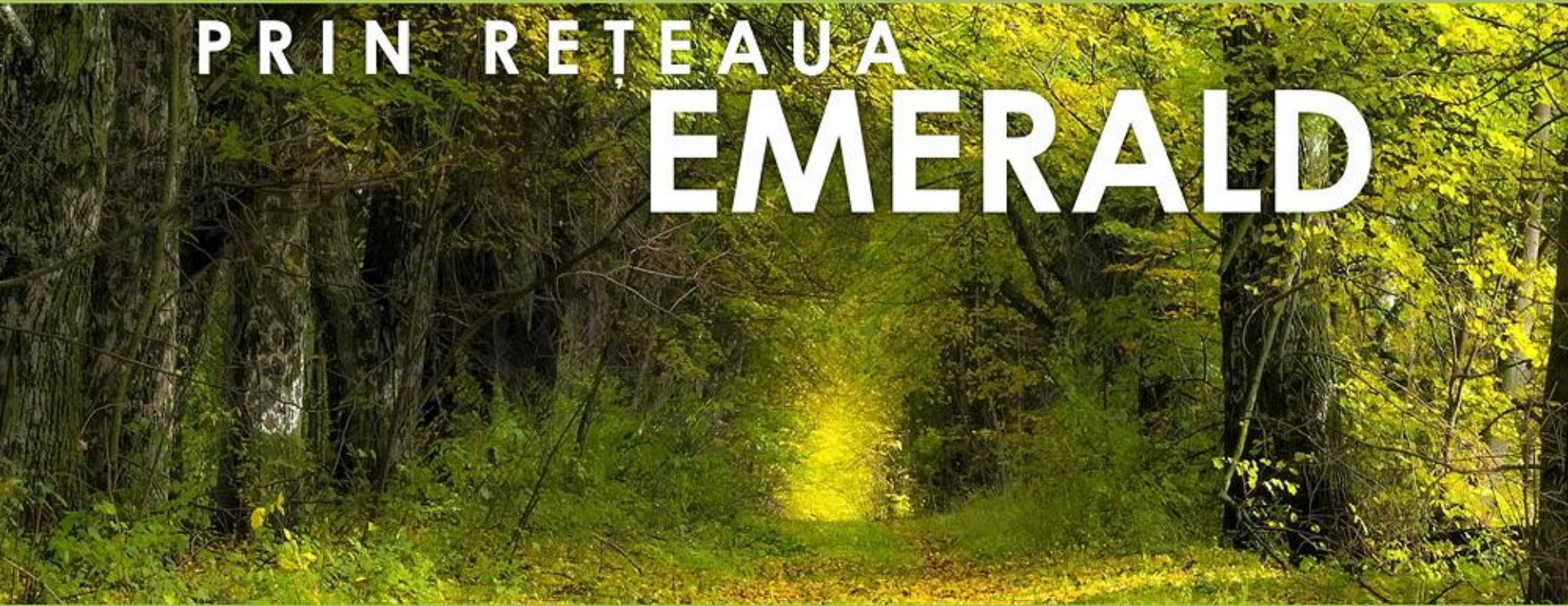


Ministerul
Mediului

PROTEJĂM NATURA

PRIN REȚEAUA

EMERALD



**Steering Committee Meeting Emerald Network
Phase II Council of Europe, Strasbourg, 14
January 2016**

Main achievements in 2015

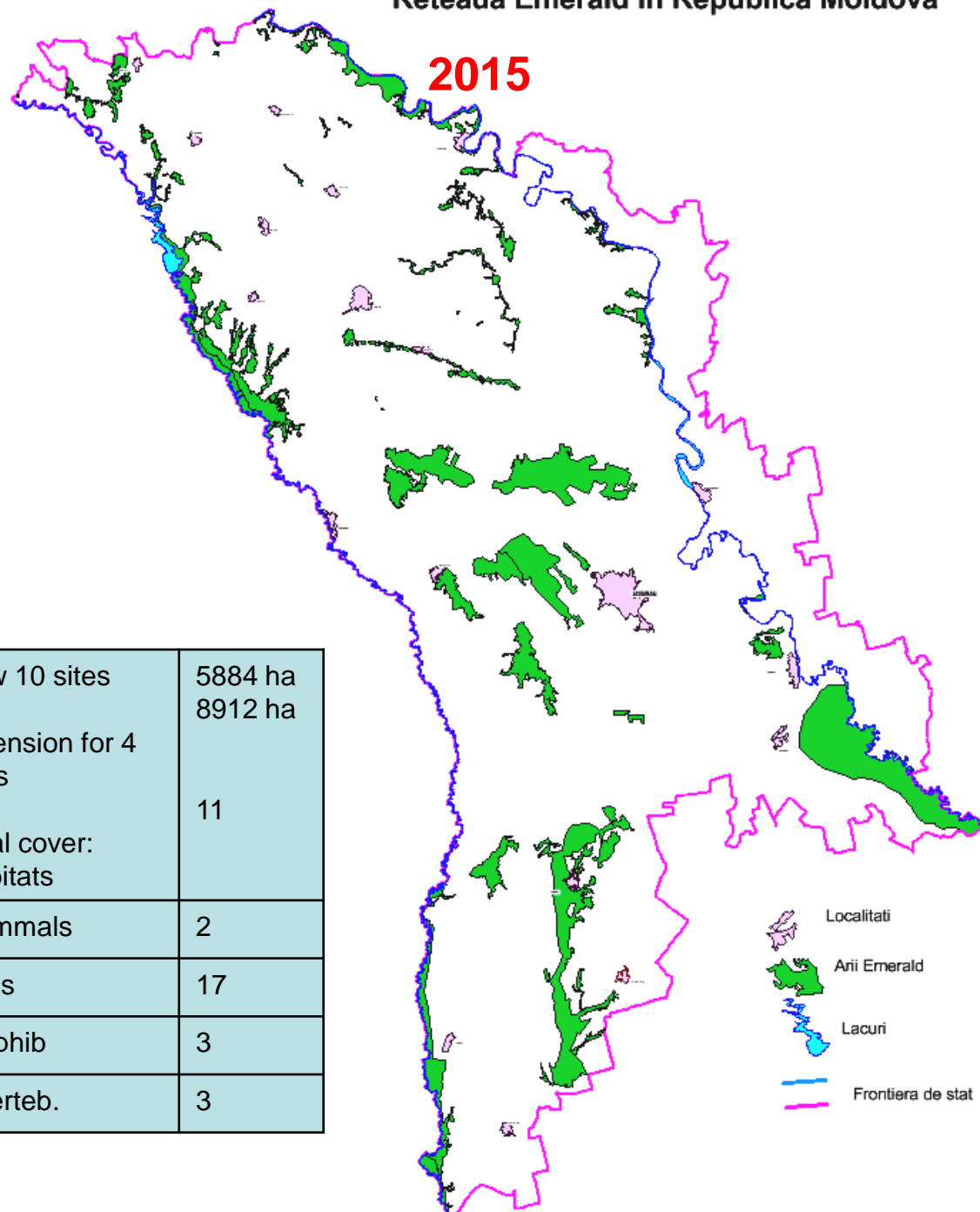
- **Identifying new species distribution information:** Total new 26 species (1 mammals, 20 invertebrates, 14 new birds and excluded 13 birds)
- **Identifying new sites:** new 10 sites (8912 ha) and extension for 4 sites (5884 ha). Total 14796ha.
- **Stakeholders involvement: expertise, consultation, discussion**
 - Local project consultants from academia, university, NGO sector
 - National seminar – July 2016 with gov. sectorial staff, National reserves, academia, ecological inspection, forestry personnel, NGOs etc.
 - Round Table – September, 2015, USM with academia and students.
 - “Caravana BIO” – May 2015 – 4 trips to districts, meetings with local authorities, public, students etc.
 - Experts’ workshop – November 2016, preparation for the Biogeographic seminar.
- **Field trips** (15 trips): to Nisporeni, Stefan Voda, Ialoveni, Criuleni, Soroca, Rezina, Edinet, Anenii Noi, Briceni, Singerei, Cantemir, Cahul.
- **Follow-up of the evaluation results of the Biogeographic Seminar in Minsk:** revision and self evaluation of birds species (Total 95 species)
- **Policy development:** The National Biodiversity Strategy and Action Plan for 2015-2020, approved in May 2015 by the Government and contains actions for the Emerald Network.
- **Vizibility and education:** Brochure on Emerald Network published, Red Book 2016, Caravana BIO, Round table at USM, University curricula on Biodiversity, bulletin USM, websites www.bsapm.nmoldnet.md , <http://biodiversitate.md>, www.usm.md, www.mediu.gov.md
- **Cooperation/dissemination:** BirdLife Int., GEF/UNDP projects, EU Clima-Est project, EU/WB-ENPI/FLEG, Winsdom, Ecospectrum.

Reteaua Emerald in Republica Moldova

2015

Thematic layer	MD 2015	MD 2014
Sites	36	26
Habitats	19	19
Plants	9	9
Mammal	11	10
Birds	80	75
Amphib./R ept.	3/3	3/3
Fishes	3	3
nvertebr.	23	3
Total area	312248 ha/or 9,23%	403424 ha/or 11,92%

New 10 sites	5884 ha 8912 ha
Extension for 4 sites	11
Total cover: Habitats	
Mammals	2
Birds	17
Amphib	3
Inverteb.	3



-  Localitati
-  Arii Emerald
-  Lacuri
-  Frontiera de stat

New Emerald sites identified in 2015

Codul ariei	Denumirea	Suprafata ha	Asociatii	Specii
MD0000027	La Castel	760	Querco (roboris) Carpinetum Soó et Pocs, Cavitati	16
MD0000028	Vila Nisporeni	5451	As. Carpino-Quercetum petraeae Borza 1941; As. Tilio-tomentosae-Carpinetum Doniță, 1968.	17
MD0000029	Zabriceni	595	as. Querco-robori-Carpinetum Soo et Pocs (1931) 1957.	11
MD0000030	Fetesti	754	As. Cotino-Quercetum pubescentes Soo 1932.	11
MD0000031	La 33 de vaduri	265	as. Querco-robori-Carpinetum Soo et Pocs (1931) 1957.	10
MD0000032	Lunca cu trestie Maramonovca (Cubolta)	212	Ass. Sparganio-Glicerietum Br.-Bl.. 1925, Ass. Caricetum ripariae Soo 1928, Ass. Caricetum vulpine Nowinski 1927, Soo 1969.	7
MD0000033	Lunca cu rogoz Cainari	108	Ass. Scripeto-Phragmitetum W. Koch 1926; Glycerietum maximae, Heck 1931; Butumetum umbelati Konczak 1968, Philipii 1973.	6
MD0000034	Mestecanis	50	as. Querco-robori-Carpinetum Soo et Pocs (1931) 1957. Betula pendula	9
MD0000035	Ocnita	101	Ass. Querceto (roboris) – Cerosietum Gheideman et aut. 1964	6
MD0000036	Telita	616	As.Cotino-Soo pubescentis Guercetum 1932 as Pruno spinosae-Soo Crataegetum 1931. Downy oak ecosystems.	11
Total		8912		

Extended Emerald sites with the new identified areas - 2015

Area Cod	Name	Surface in 2014 ha	Surface in 2015 ha
MD0000006	Caracuseni	4594	6661
MD0000003	Plaiul Fagului	5658	5850
MD0000009	Codrii Tigheci	3554	6466
MD0000018	Padurea Hirbovati	3043	3756

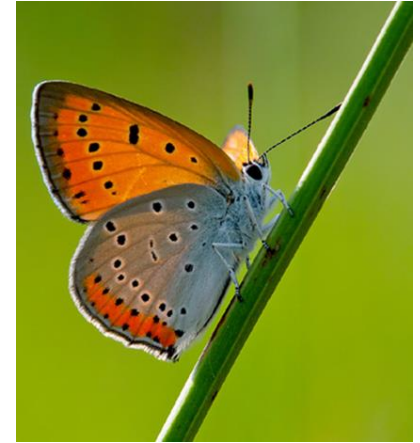
Extension – 5884 ha

Revised areas and sites (2015)

Area Code	Name	Surface in 2014 ha	Surface in 2015 ha
MD0000012	Lacurile Prutului de jos	19042	16440
MD0000016	Stepa Bujecului	50122	49610
MD0000005	Unguri-Holosnita	15600	11180
MD0000011	Prutul de mijloc	33080	32320
MD0000014	Stincile Nistrene	27084	4458
MD0000015	Rezina	4994	3898
MD0000017	Stepa Baltiului	56010	12460



MD_Results of the Emerald Network Birds evaluation Biogeo Seminar in Minsk



EXCL REF LIST	13
IN MAJ	5
IN MIN	13
IN MIN/CD	10
IN MIN/IN MAJ	1
IN MIN/IN MOD	2
IN MIN/IN MOD/CD	5
IN MIN/SR	
IN MOD	13
IN MOD/CD	8
IN MOD/SR	
ND	2
SR	10
SR/CD	
SUF	6
SUF/CD	7
Total	95
Total minus Excl and ND	80
% SUF and IN MIN	29.25

• **National participation:**

- Government official from the Min.Environment;
- Expert/consultant- academia
- NGO – Birdlife Int.



Difficulties/solutions

- **Lack or insufficiency of updated information on species and habitats (published papers):**
 - Field trips and involvement of postgraduate, doctoral degree and M.sc students, academia experts.
 - Cross/sectorial consultation via small working group meetings, national seminars (environm., forestry, agriculture, national reserves, education, NGOs, local community etc.)
 - Collaboration with available projects/programmes, NGOs
- **Insufficient information and awareness through the decision makers, local authorities, large public:**
 - public information and visibility via the national seminar, round table, “Caravana BIO”, field trips, brochure, dissemination of Calendar Emerald -2015
- **Insufficiency of actual information on Birds species for preparation to the Biogeographic seminar on evaluation:**
 - Consultation available maps of Birdlife Int., involvement of NGOs, students, field trips etc.
- **Technical improvement of GIS mapping**
 - using MapInfo with support of Orthophoto via www.geoportal.md (used projection UTM (WGS 84) Zone 35, Northern Hemisphere)

Field Trips





