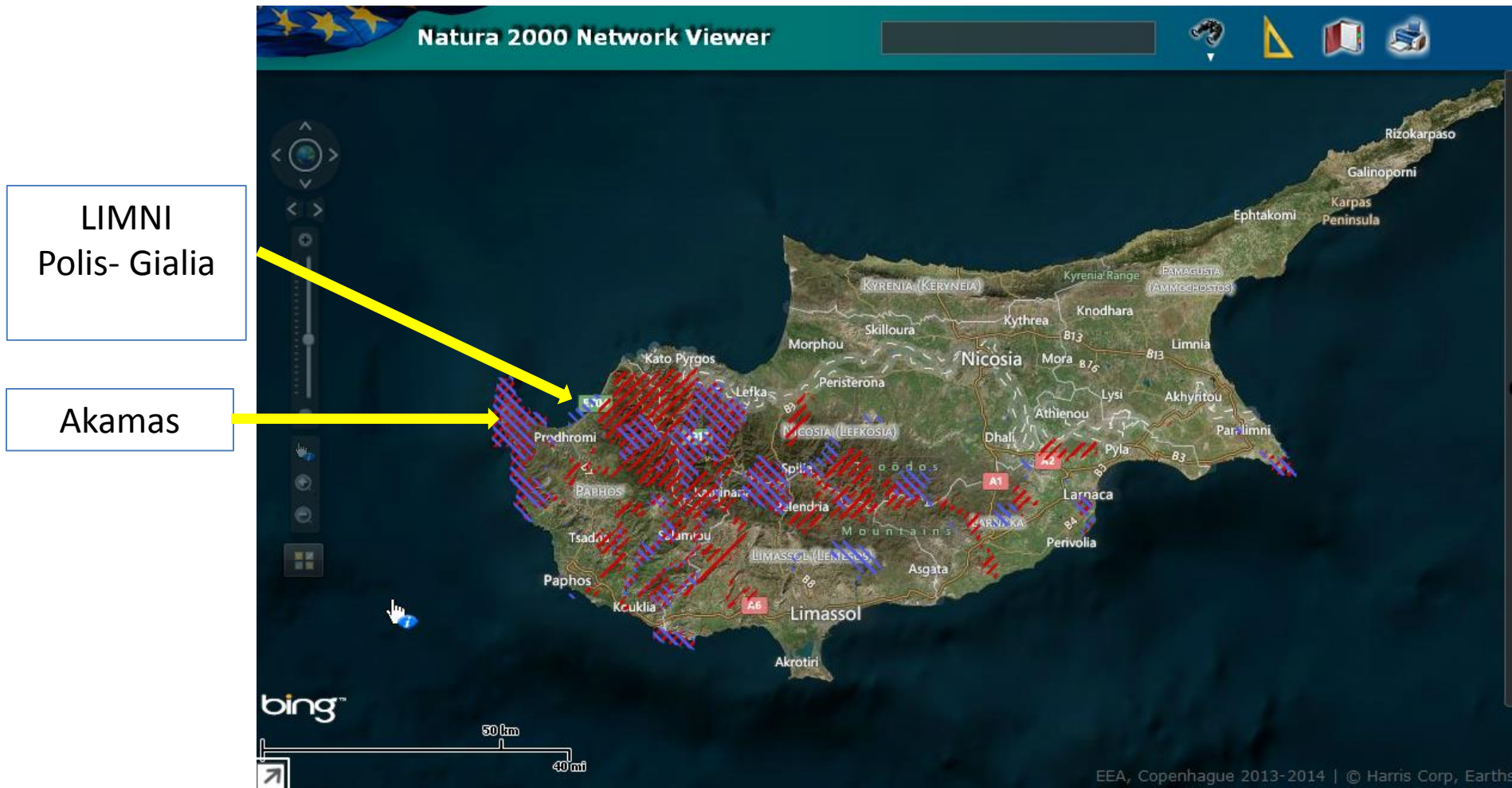




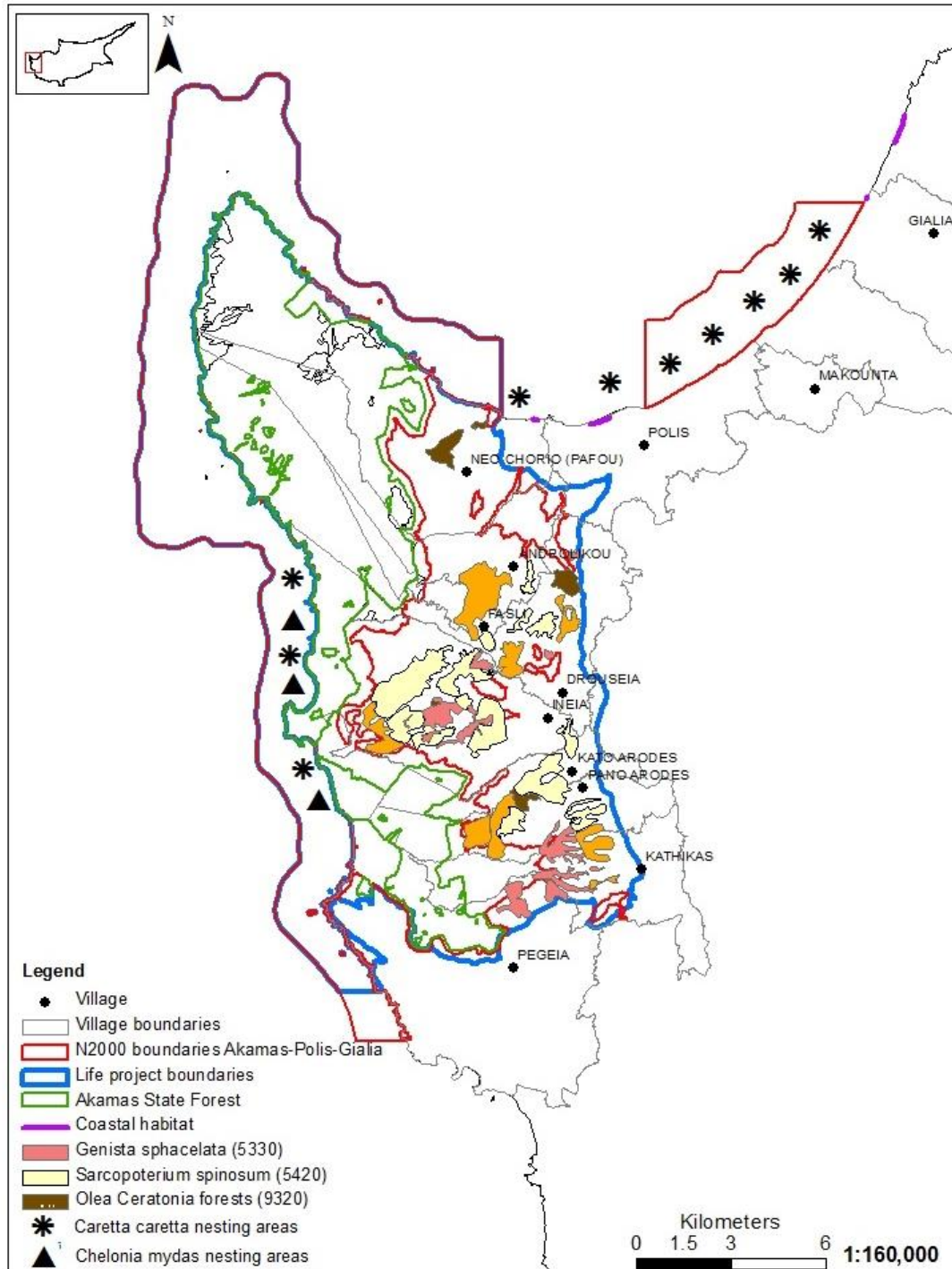
**CONSERVATION OF THE AKAMAS AND
LIMNI AREAS IN WESTERN CYPRUS:
THREATS POSED TO WILDLIFE BY
DEVELOPMENT NEAR OR WITHIN
THESE AREAS.**

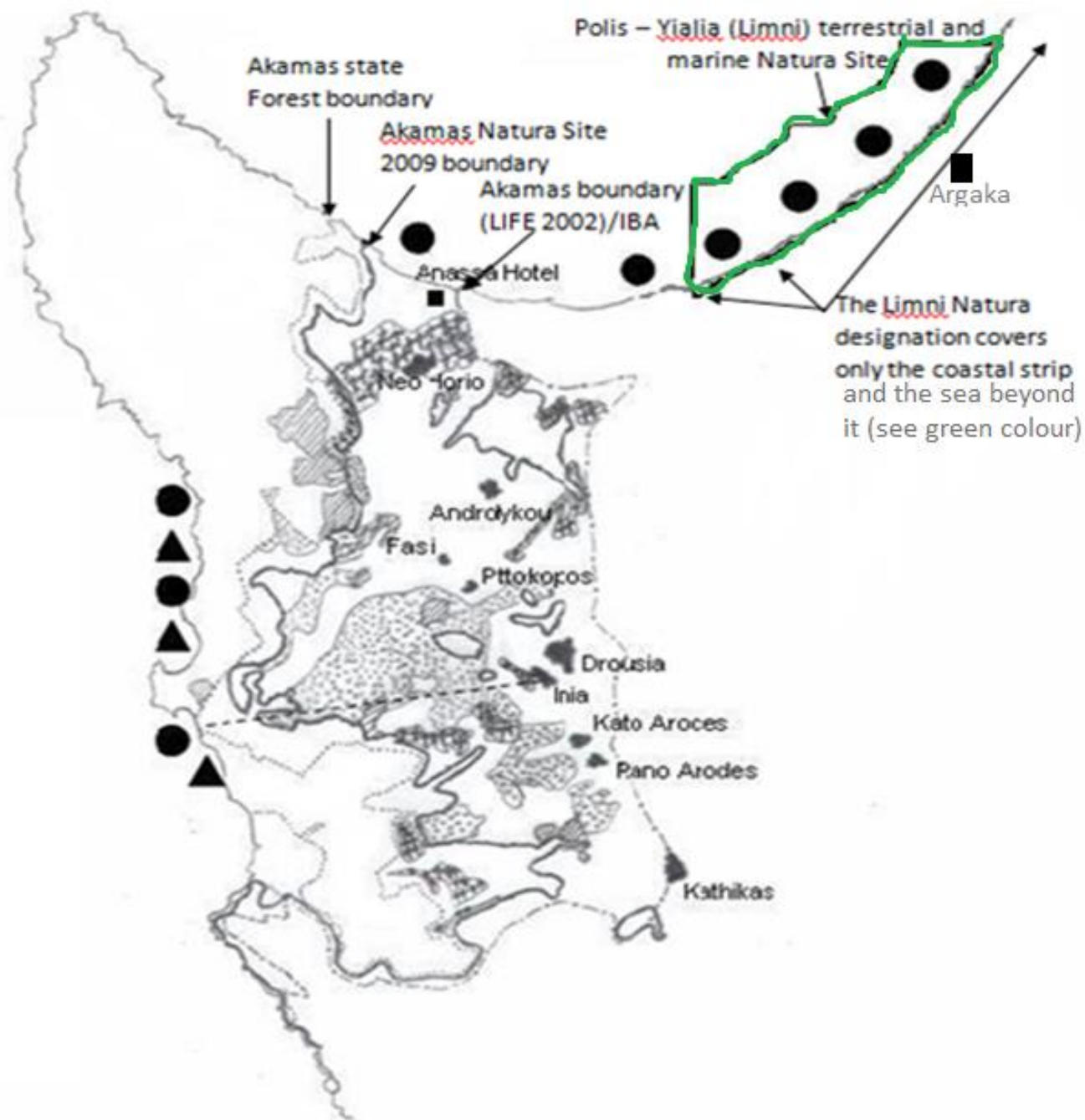
Dr Artemis Yiordamli
Executive Director

Akamas and Polis- Gialia Natura 2000 areas









Akamas Ownership



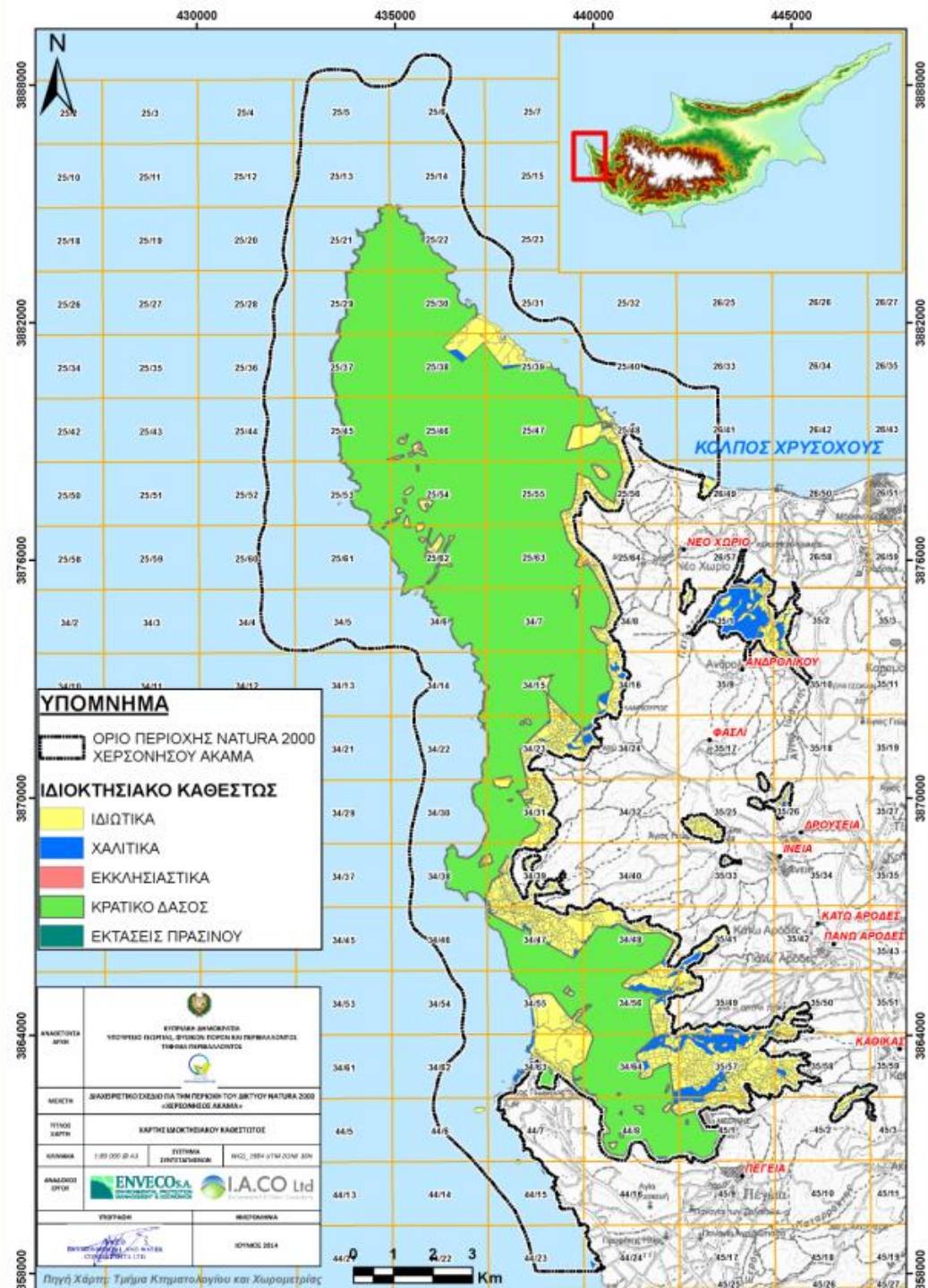
State Forest



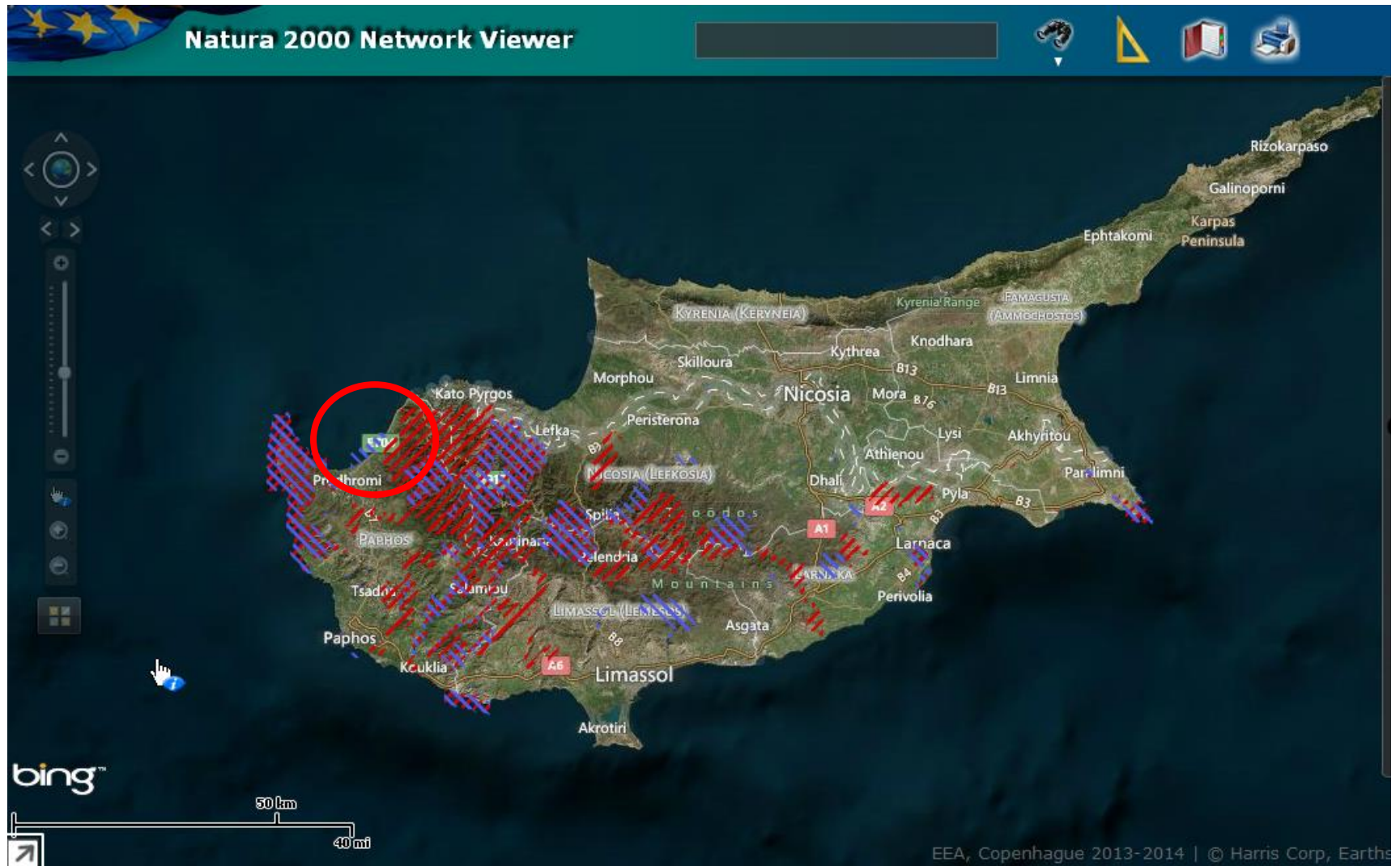
State Land



Private Land



Limni (Polis-Gialia) Natura 2000 area



Proposal for Golf Development next to a turtle nesting area



Dense housing development masquerading as golf complex!

2 Golf Courses (18 holes each,
fragmented throughout site)

Club House

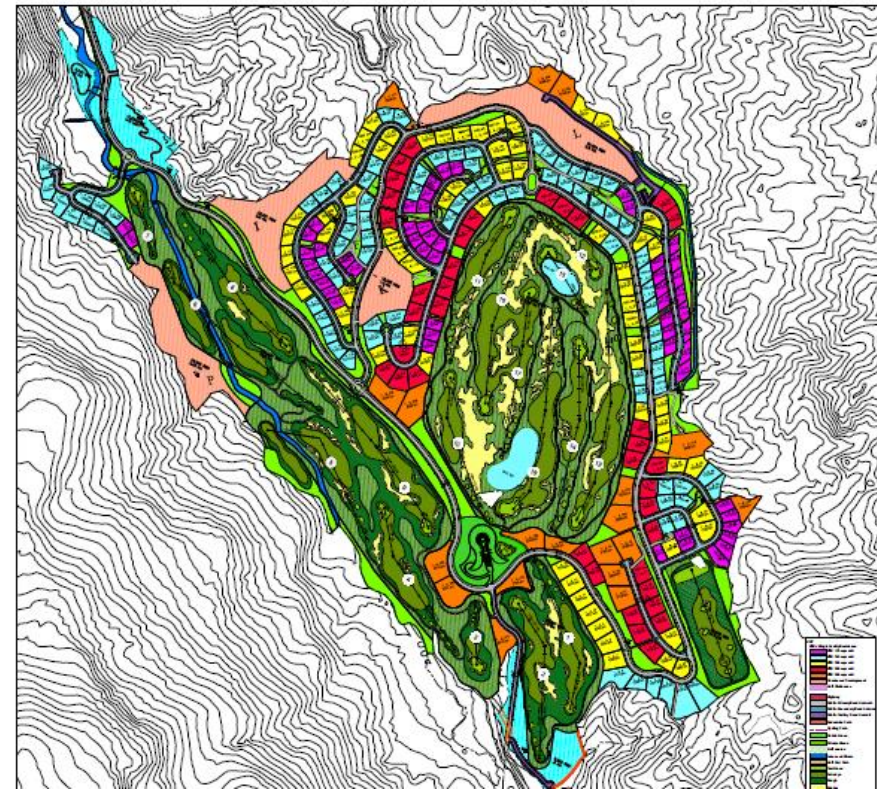
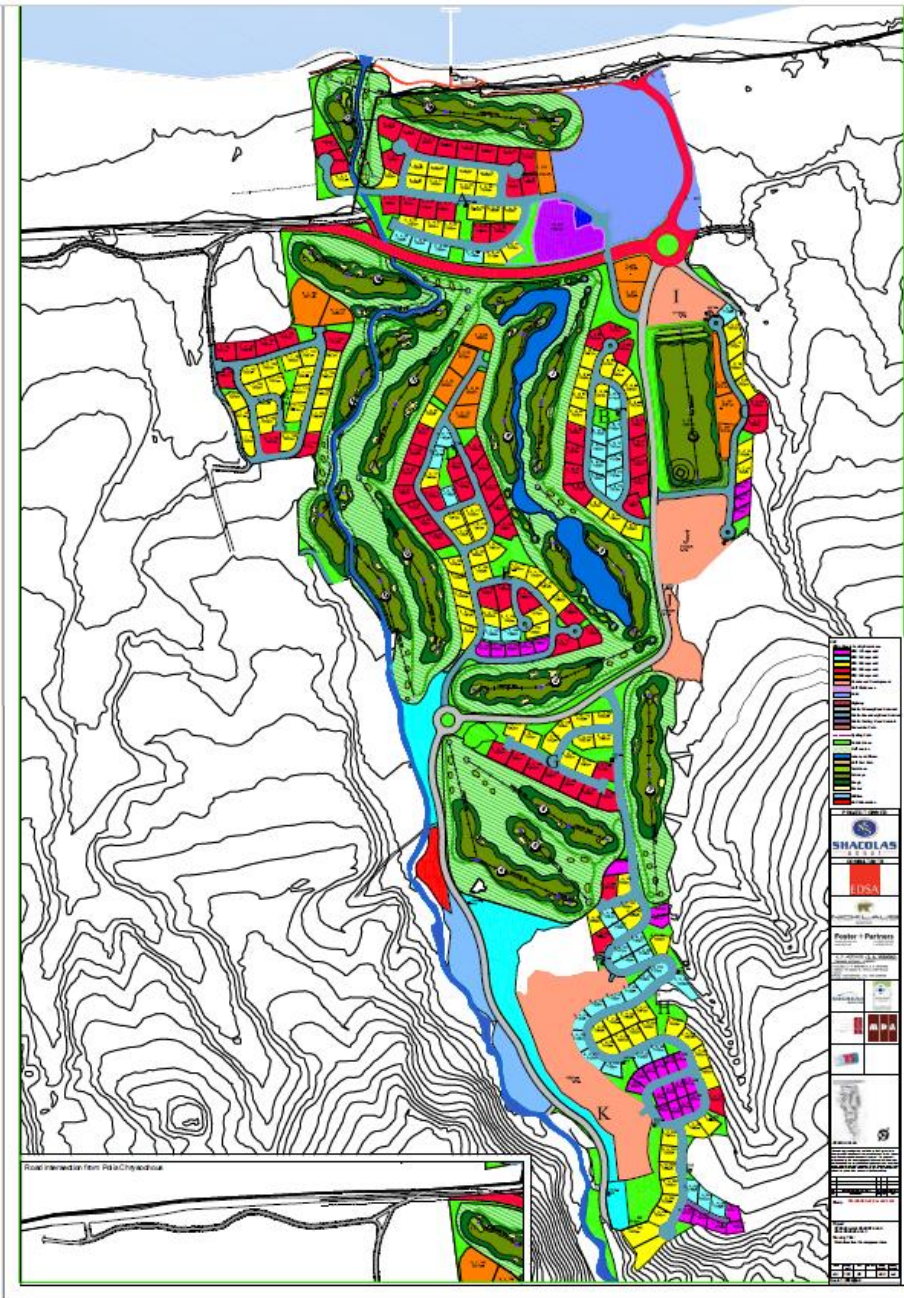
Hotel (160 rooms)

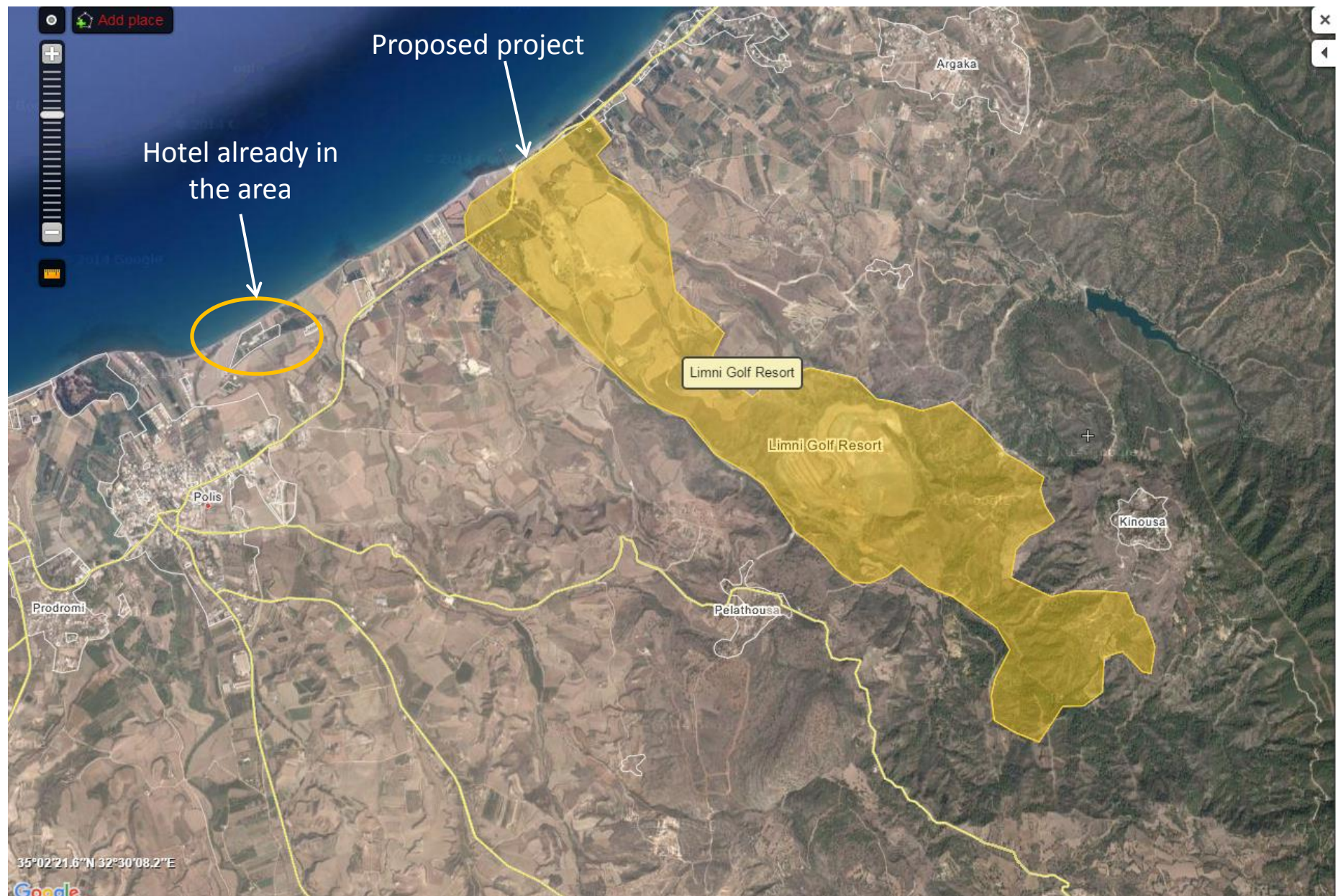
Road Network

and...**792 villas!!**

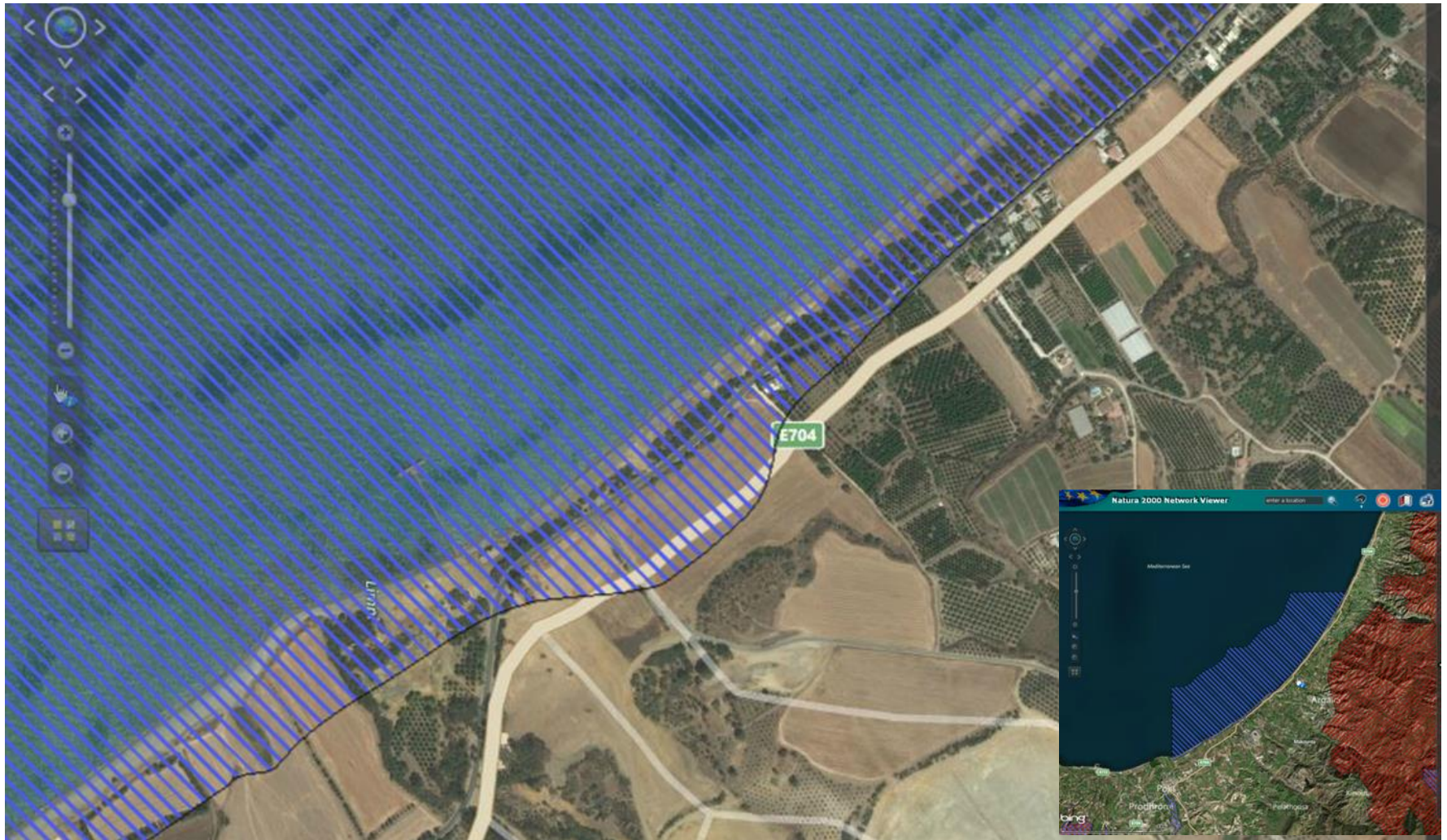


The whole development





LIMNI (Polis – Gialia) Natura 2000 area



10km long beach

Consequences of a golf development next to a turtle nesting area



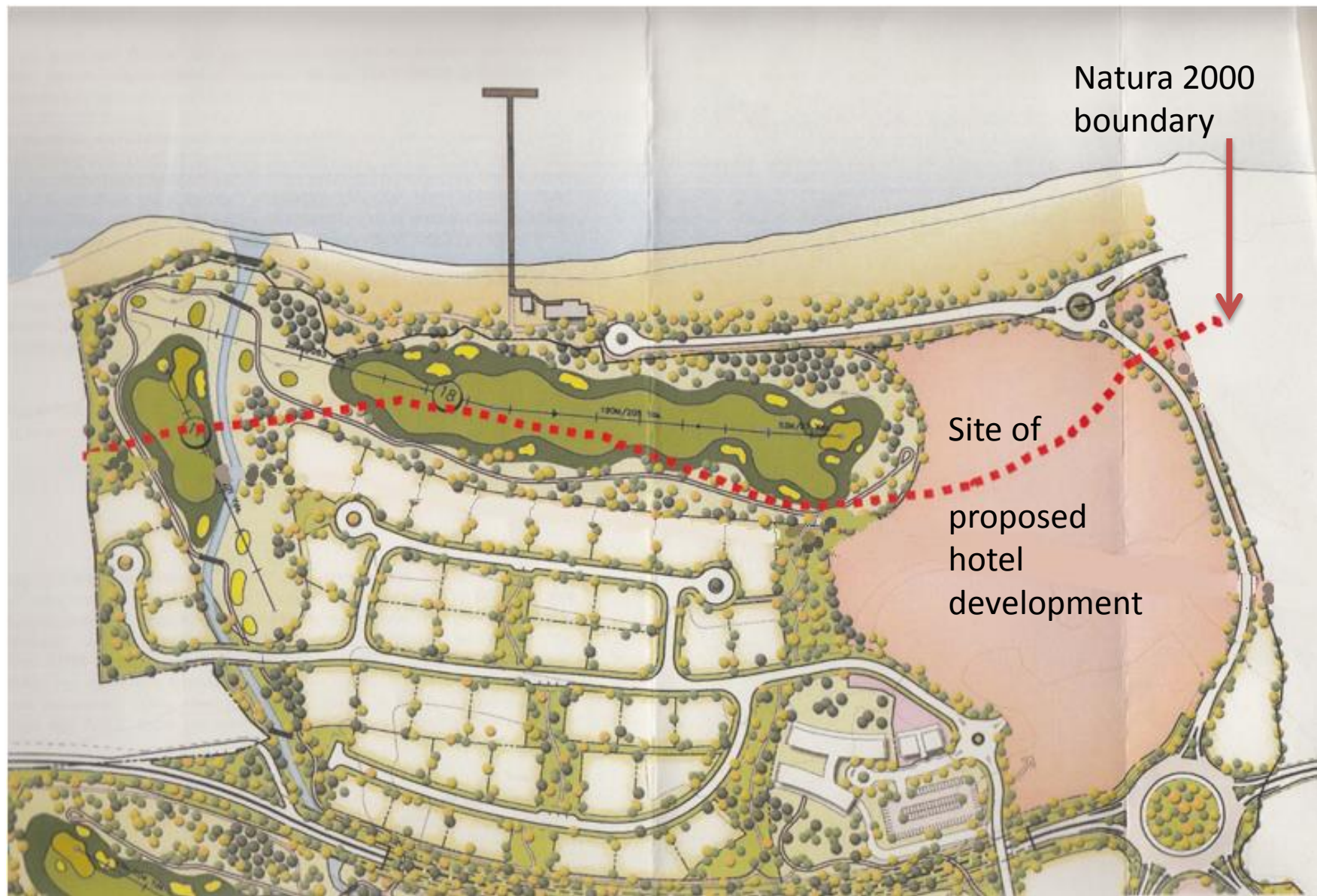
SO...what about the turtles ?

The mother turtle may not come ashore and instead abort her eggs into the sea

IF she nests, the eggs in the nest may be damaged by beach disturbance

IF the hatchlings survive, they may head away from the sea because of the lights





Natura 2000
boundary

Site of
proposed
hotel
development

Area that needs to remain free of housing development



475m zone free of houses and hotels

Data for *Caretta caretta*

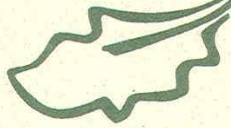
- Total Mediterranean nests 6000 p.a.
- Total Cyprus nests 1000 p.a.
- Total Limni nests 550 p.a.
- Total nests directly influenced approx 250 p.a.

25% of total Cyprus nests

5% of total Mediterranean nests



TERRA CYPRIA



ΤΟ ΚΥΠΡΙΑΚΟ ΙΔΡΥΜΑ ΠΡΟΣΤΑΣΙΑΣ ΤΟΥ ΠΕΡΙΒΑΛΛΟΝΤΟΣ
THE CYPRUS CONSERVATION FOUNDATION
KIBRIS ÇEVRE KORUMA VAKFI

Working for a sustainable Cyprus in cooperation with the Cyprus Environmental Studies Centre and the Laona Foundation for the Conservation and Regeneration of the Cypriot Countryside

Partners of: European Centre for Nature Conservation (ECNC), Eurosite, Planta Europa, Mediterranean Action Plan (MAP)

So...what are we asking of you?

