

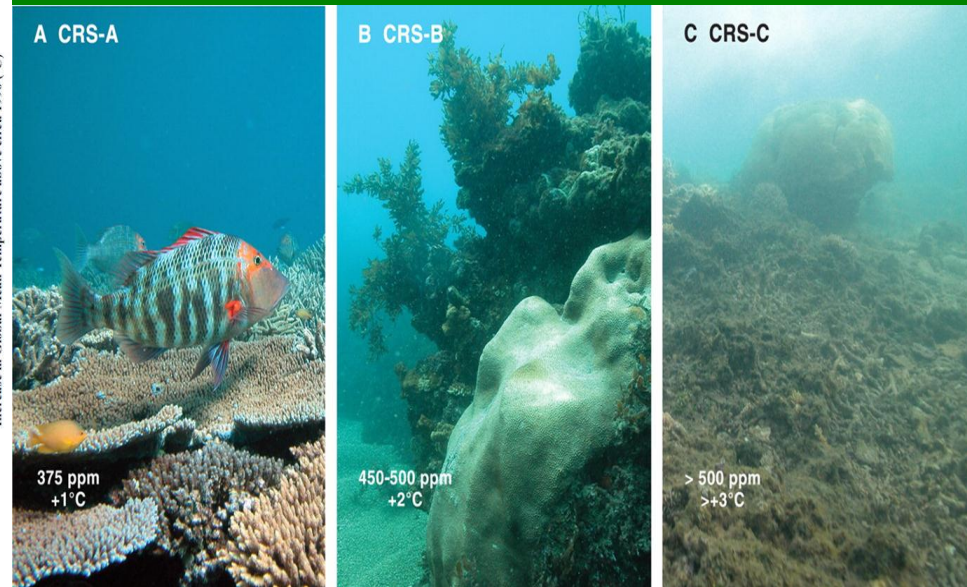
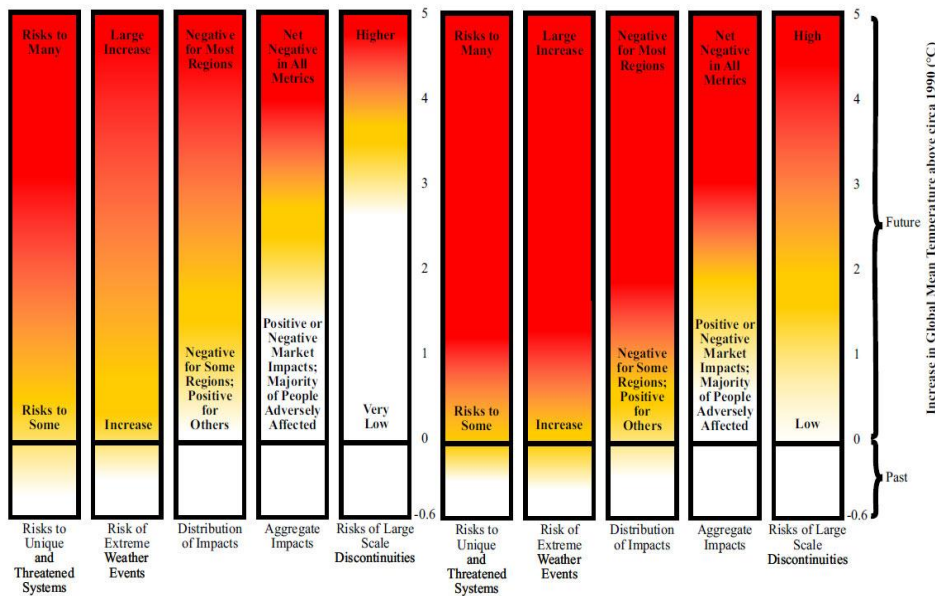
The biodiversity-climate change link and opportunities for convergence in implementation of different policies



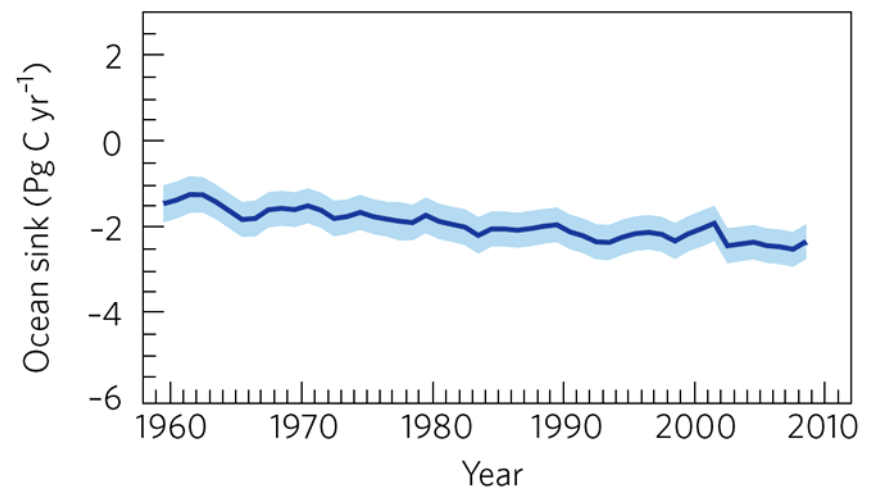
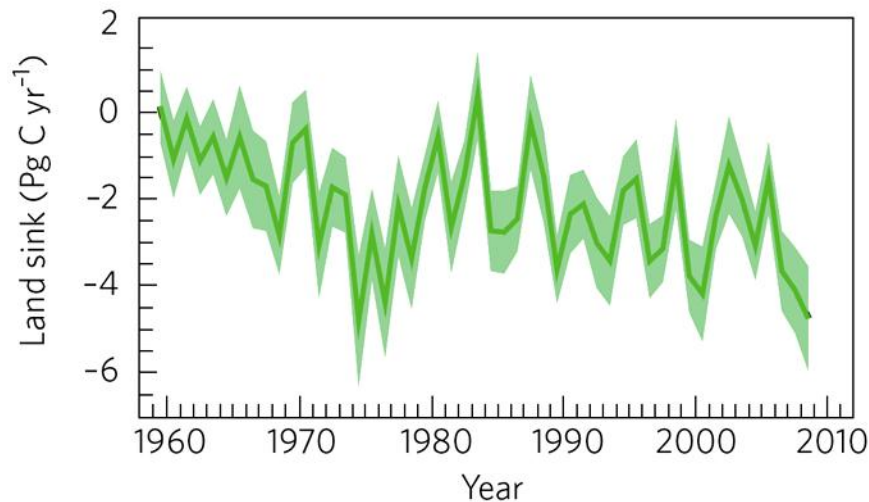
MORE CLIMATE CHANGE – LESS BIODIVERSITY

TAR (2001) Reasons For Concern

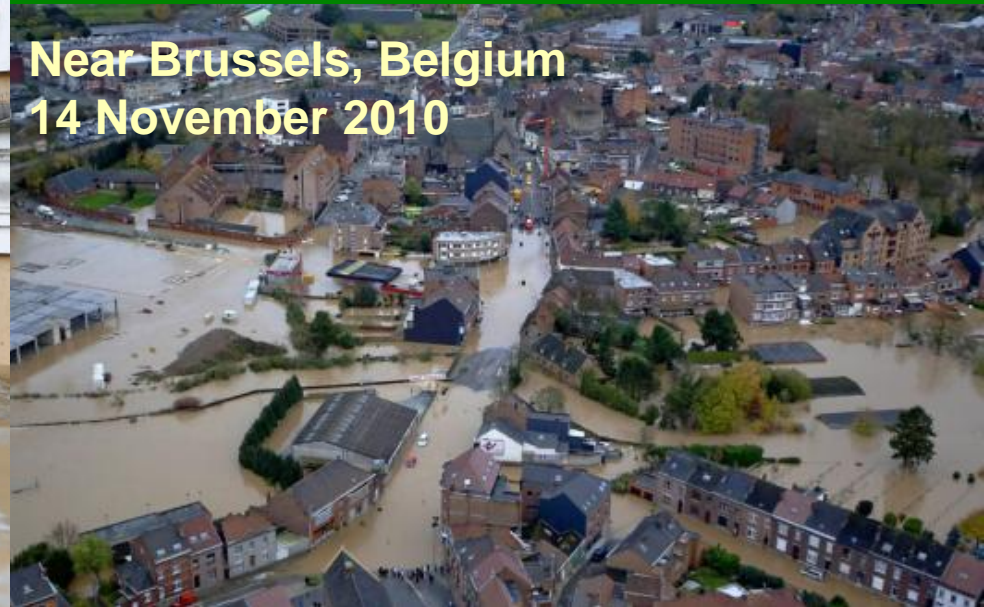
Updated Reasons For Concern



LESS BIODIVERSITY MORE CLIMATE CHANGE



LESS BIODIVERSITY – MORE CLIMATE CHANGE IMPACTS



how to break the vicious circle ?

increase resilience

decrease vulnerability

- *Ecosystem-based approaches to climate change adaptation and mitigation*
- *Green Infrastructure*
- *Nature-based solutions*
- *Eco-DRR – ecological disaster risk reduction*
- *Natural water retention measures*
- ...

use the adaptive forces of nature

involve people and build responsibility

harness multiple benefits at comparable low cost



MEXICO CITY, MEXICO



SYDNEY, AUSTRALIA



HYDERABAD, INDIA



BUJUMBURA, BURUNDI



NEW YORK CITY, UNITED STATES



KATHMANDU, NEPAL



LONDON, UNITED KINGDOM



KIRABATI, CENTRAL PACIFIC

**People
citizen
want to
get
involved!**

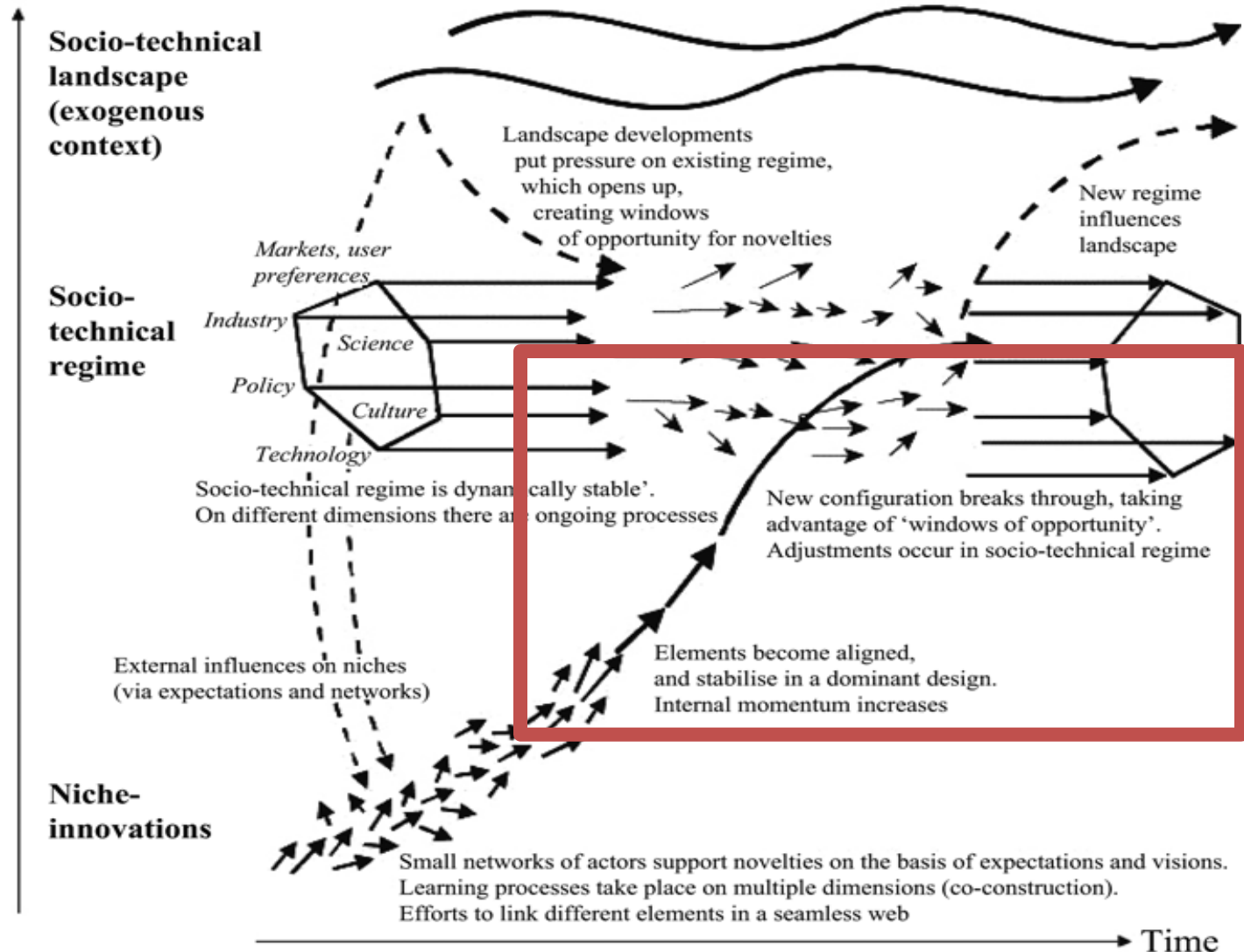


European
Commission

Where are we today?

**Ecosystem-based approaches
leading to transition**

Increasing structuration
of activities in local practices

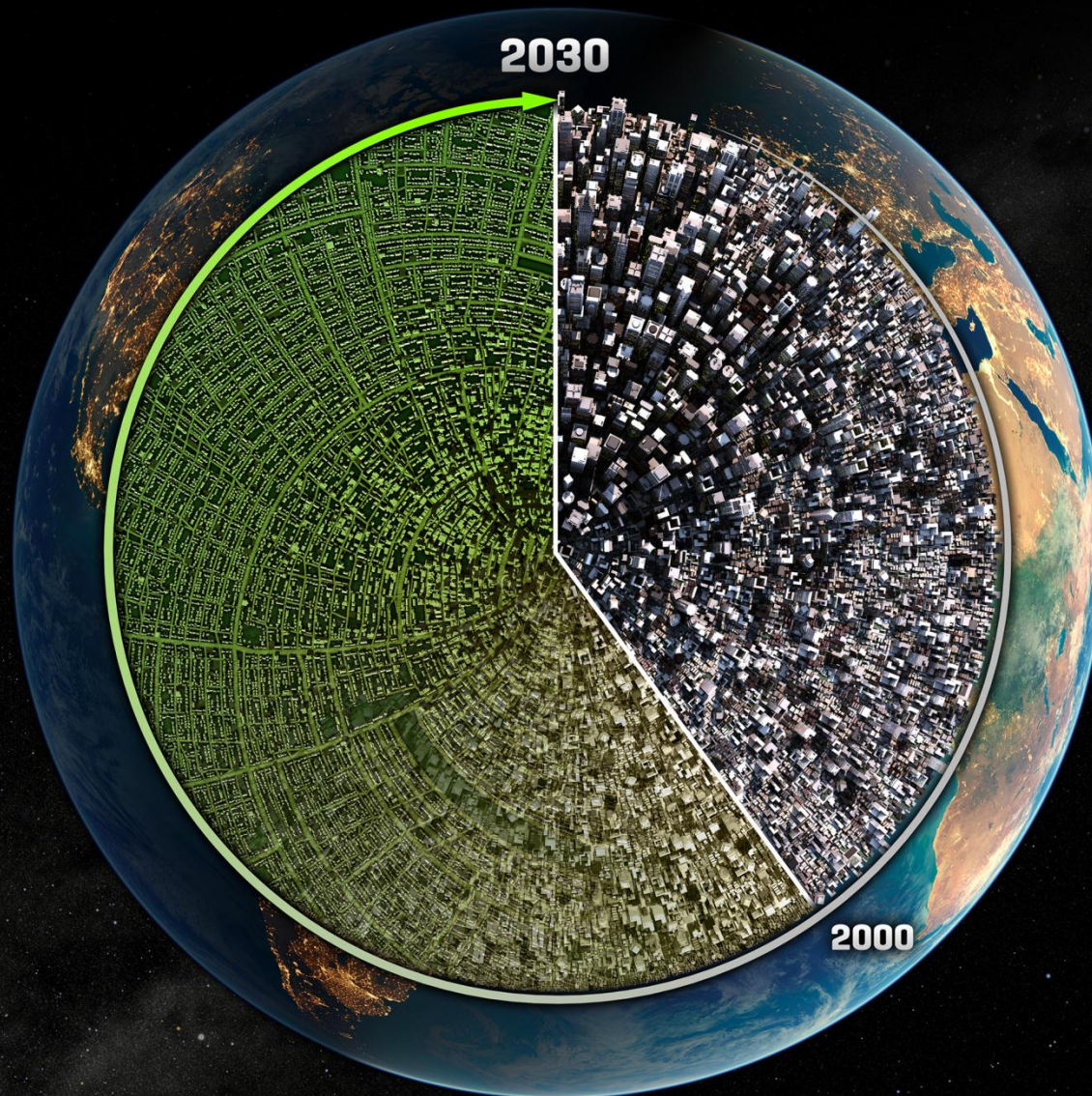


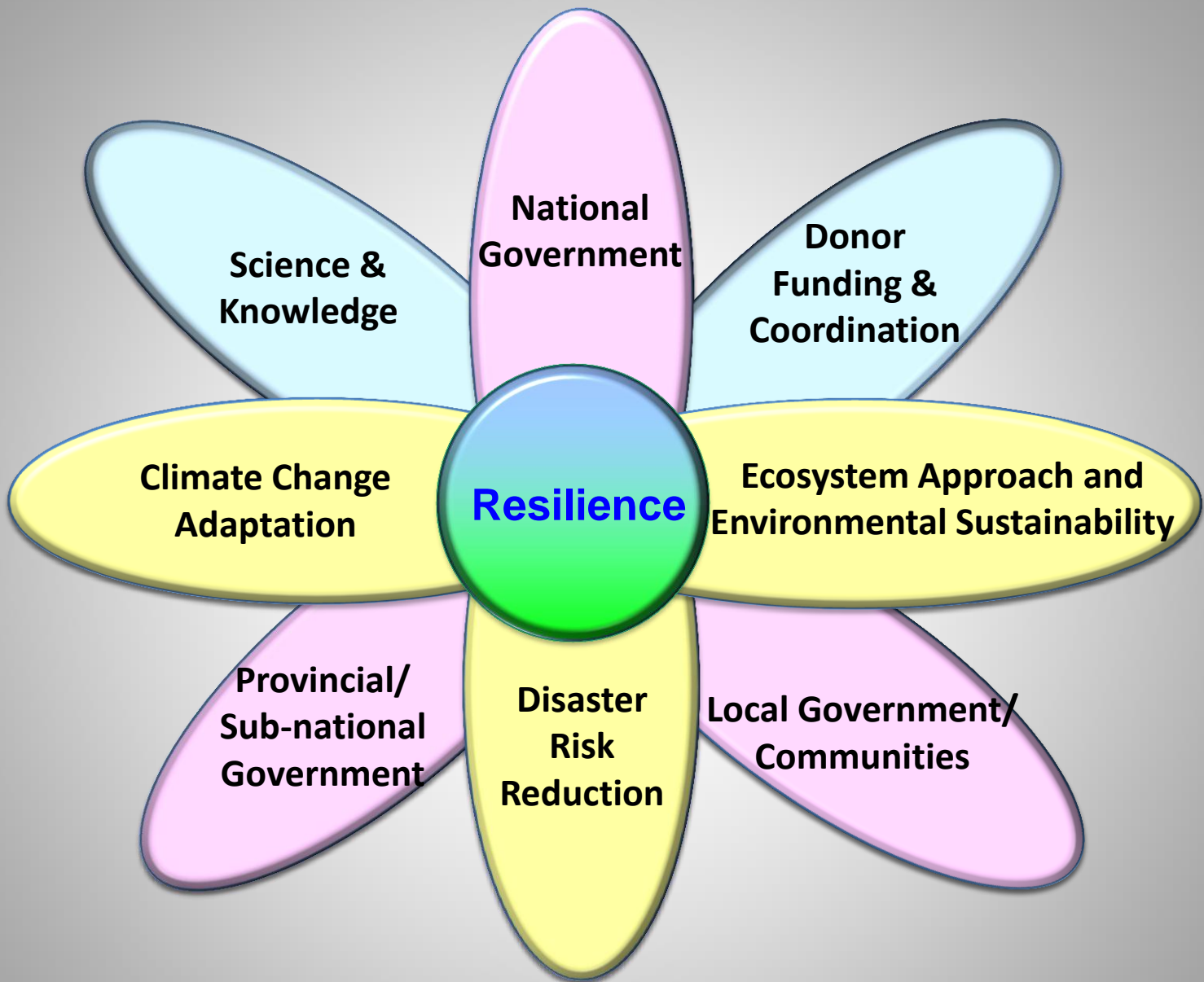
Source: Geels and Schot (2007, p. 401)

CHALLENGES & OPPORTUNITIES

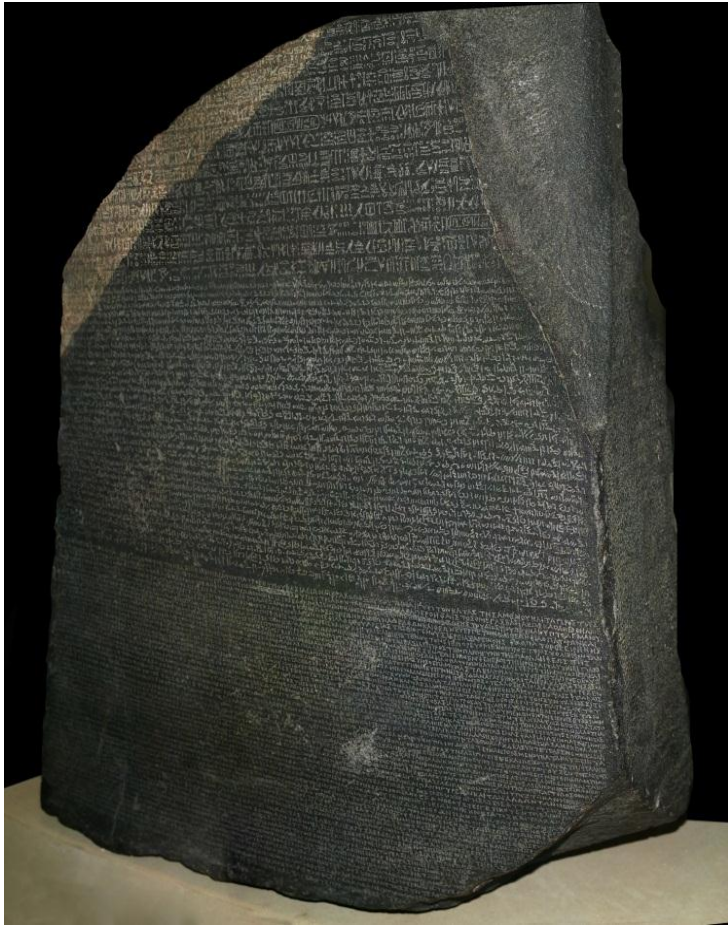
MORE THAN 60% OF THE AREA PROJECTED TO BE URBAN IN 2030

HAS YET TO BE BUILT





The Rosetta Stone **EBA** – **NBS** – **GI** **eco-DRR** – **NWRM** ...



working with nature for people

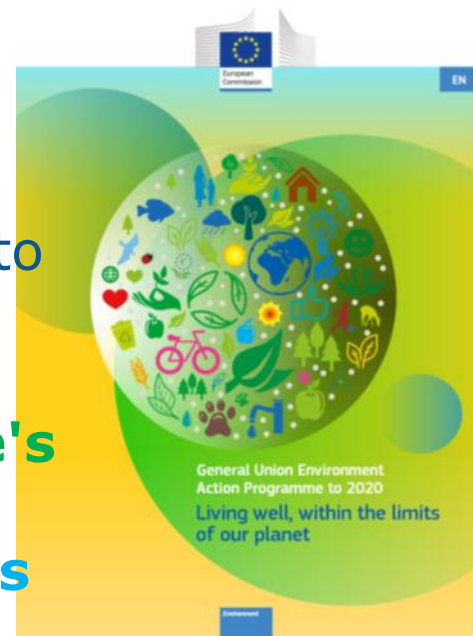
Ecosystem-based approaches/ Green Infrastructure/ Nature-based solutions ...

- **are ready for use and easily accessible**
- **involve people and build responsibility**
Job and Business Opportunities
- **bring multiple benefits**
- **are cost efficient and make economic sense**
- **are to be an integral part of the overall adaptation and mitigation effort and disaster risk reduction effort**

Policy Framework(s)

- EU 2020 Biodiversity Strategy and the Roadmap to Resource Efficiency
- **EU Adaptation Strategy**
- **Green Infrastructure (GI) Enhancing Europe's Natural Capital**
- **H2020 Focus Area on Nature-based solutions (NbS)**
- **Water Policy (NWRM) natural water retention measures**

policy signals to decisionmakers, planners, promoters to invest in GI and adaptation projects at local, regional, national and cross-boundary level



BEST
VOLUNTARY SCHEME
FOR BIODIVERSITY AND
ECOSYSTEM SERVICES
IN TERRITORIES OF
EUROPEAN OVERSEAS



European
Commission



MAYORS ADAPT

THE COVENANT OF MAYORS INITIATIVE
ON ADAPTATION TO CLIMATE CHANGE

HOME

ABOUT

TAKING ACTION

MATERIALS

FAQs

CONTACT

Mayors Adapt

Promoting urban leadership in adaptation
to climate change

Take action

Urban Adaptation Support Tool

In parallel with reducing its greenhouse gas emissions to mitigate climate change, the European Union also needs to strengthen its resilience to the inevitable impacts of climate change, now and for the future. Adapting to climate change is the way to do this.

The success of Europe's adaptation efforts is critically influenced by the action of cities and local authorities. Those major centres of population and infrastructure are particularly vulnerable to extreme weather events and other effects of climate change.

News

November 14th, 2014

Mayors Adapt – Upcoming Events

Events with the participation of the Mayors Adapt Office "CONAMA 2014 Conference" on the 25th



European Structural and Investment Funds (ESIF):

- European Regional Development Fund (ERDF)
- Cohesion Fund (CF)
- European Social Fund (ESF)
- European Agricultural Fund for Rural Development (EAFRD)
- European Maritime and Fisheries Fund (EMFF)

Climate mainstreaming (mitigation + adaptation) in the:

- Legal basis, guidance documents
- Programming (28 Partnership Agreements, ±535 Programmes)
- Implementation (tracking of climate related expenditure)

Preliminary outcome (programming on-going):

- About € 110 billion climate related expenditure, ±24-25% of ESIF
- Contributes to: Europe 2020 Strategy, devoting at least 20% of MFF 2014-20 for climate objectives, climate mainstreaming into a range of EU policies



European Development Funds

- 11th European Development Fund (**EDF**)
 - Regional and national programmes provide the opportunity to include adaptation measures
- Development Cooperation Instrument (**DCI**)
 - Global Public Goods and Challenges Programme (GPGC)
 - 2 Flagships:
 - **Global Climate Change Alliance (GCCA);**
 - **Biodiversity for Life (B4Life)**

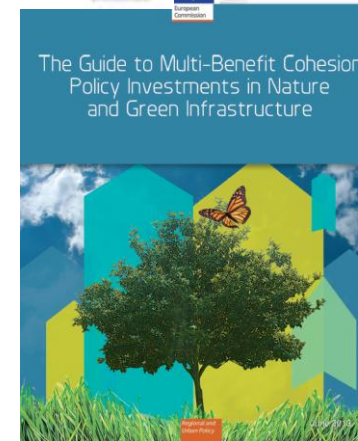


More information see links on the final slide of this presentation

- Europe 2020 Strategy, devoting at least 20% of Multiannual Financial Framework (MFF) 2014-20 for climate objectives, climate mainstreaming into a range of EU policies

Financing for Green Infrastructure:

- 2007-2013 budget
 - Structural Funds/Cohesion Fund – e.g.
 - GRABS: Green and blue space adaptation for urban areas and eco towns
 - SURF: GI - Sustainable Investments for the Benefit of Both People and Nature
 - CAP Funding
 - LIFE+: Brochure with 65 project examples from 17 MS
 - Other sources
- 2014-2020 budget:
 - New opportunities mainly in ERDF, CF, CAP (pillar 1 and 2)
- Other sources: national governments, EIB, private banks, developers and civil society
 - e.g. development of a Natural Capital Financing Facility with EIB



TO DO

- ***Divest*** from measures which have negative impacts on biodiversity and ecosystem services
- ***Invest*** in measures which contribute to maintain and restore biodiversity and ecosystem services
 - **Use available EU financing instruments to implement NbS, EbA, GI, eco-DRR , NWRM ... !**
- ***Invest*** in working with nature for people
- ***Empower*** people
- ***Encourage*** multisectoral partnerships
- ***SEEK CONVERGENCE IN IMPLEMENTATION***

Recommendations for the Standing Committee

A revised mandate of the expert group may include:

- *Review the implementation of recommendations in different sectors*
 - **Nature conservation (GI, EbA)**
 - **Climate change adaptation & mitigation (EbA, GI)**
 - **Water, Flood protection (NWRM, GI)**
 - **Urban development (NbS, EbA, GI, NWRM, eco-DRR)**
 - **DRR (eco-DRR)**
- *Communicate and multiply '**Bright Spots**'*

