

*An Roinn
Ealaíon, Oidhreachta agus Gaeltachta
Department of
Arts, Heritage and the Gaeltacht*

A National Landscape Strategy for Ireland

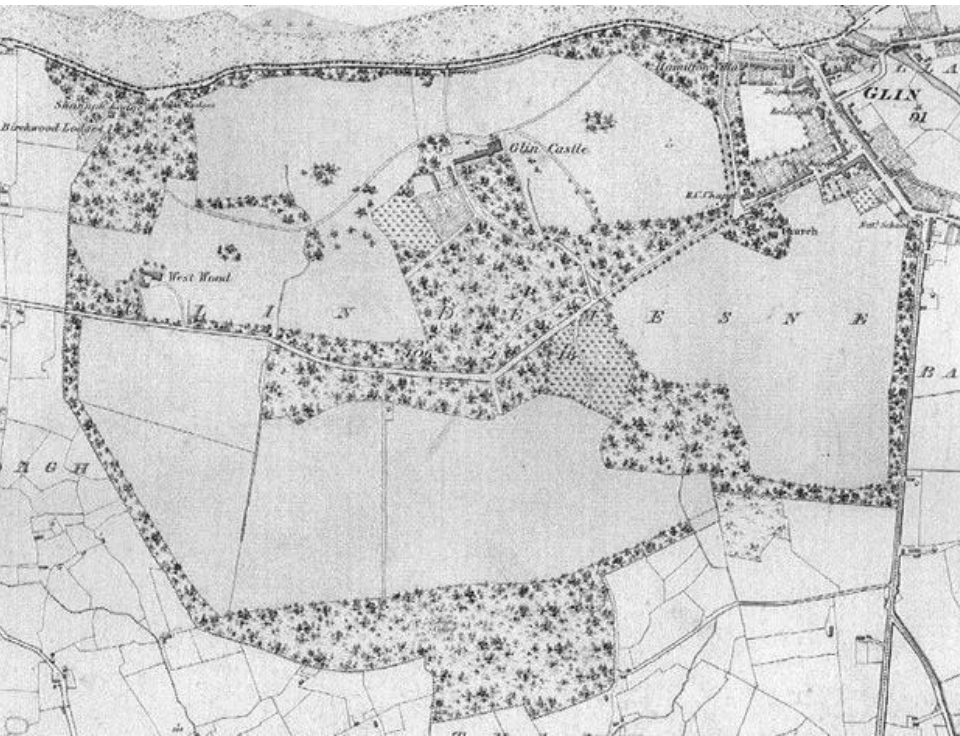
2015 - 2025

**Department of Arts, Heritage and the Gaeltacht
Custom House
Dublin 1**

What is landscape?

“Landscape is an area, as perceived by people, whose character is the result of the action and interaction of natural and/or human forces.”

European Landscape Convention: Article 1

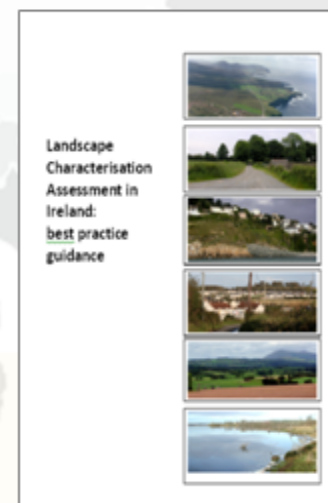
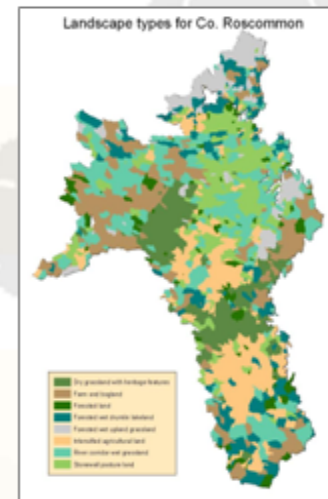
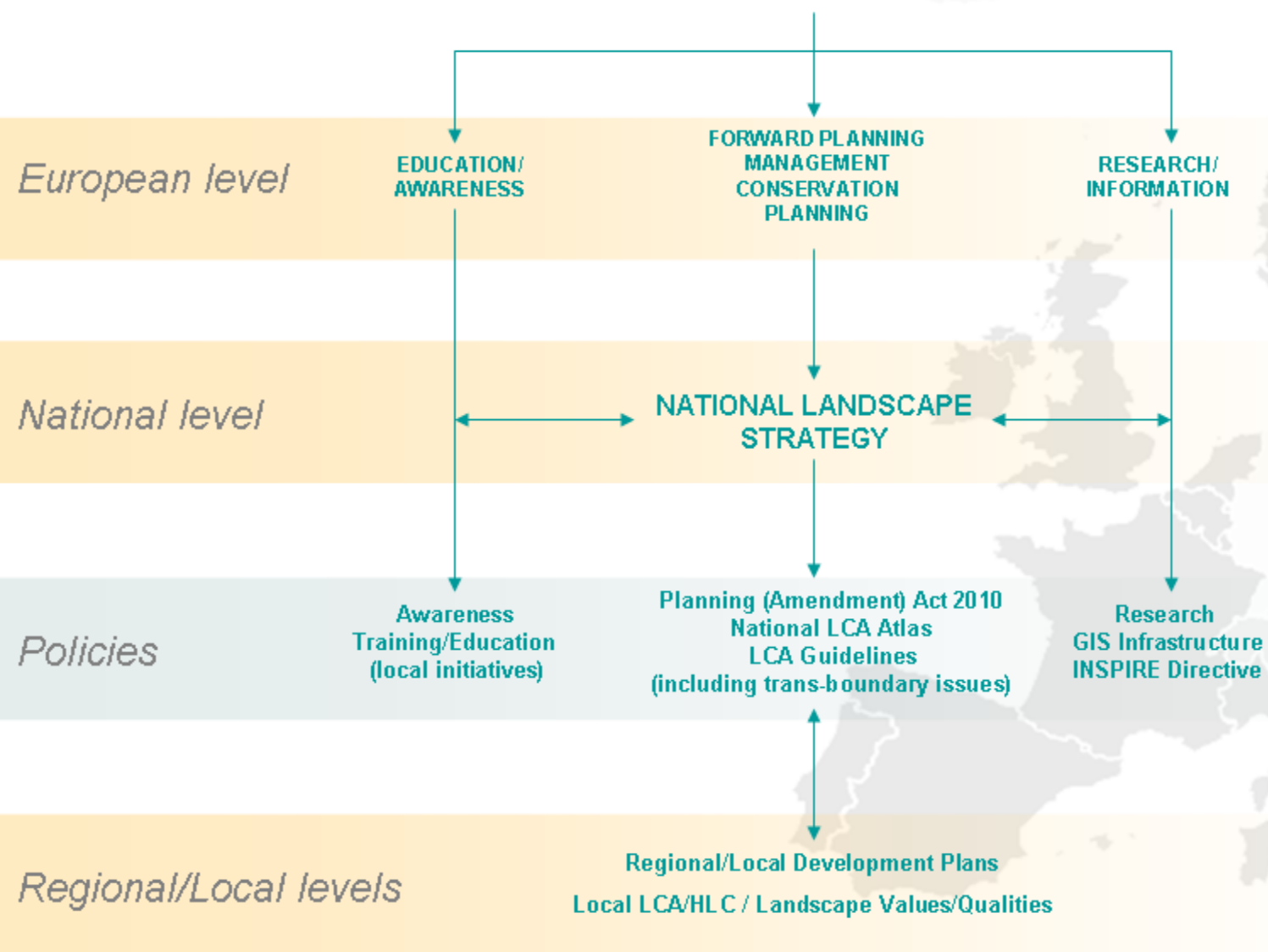


Why a National Landscape Strategy?

The sustainable management of change ... not the preservation or 'freezing' of the landscape at a particular point in its evolution



THE EUROPEAN LANDSCAPE CONVENTION



6 Core Objectives

- Recognise landscape in law
- Develop a National LCA
- Develop Landscape Policies
- Increase Landscape Awareness
- Identify Education & Training needs
- Public Participation



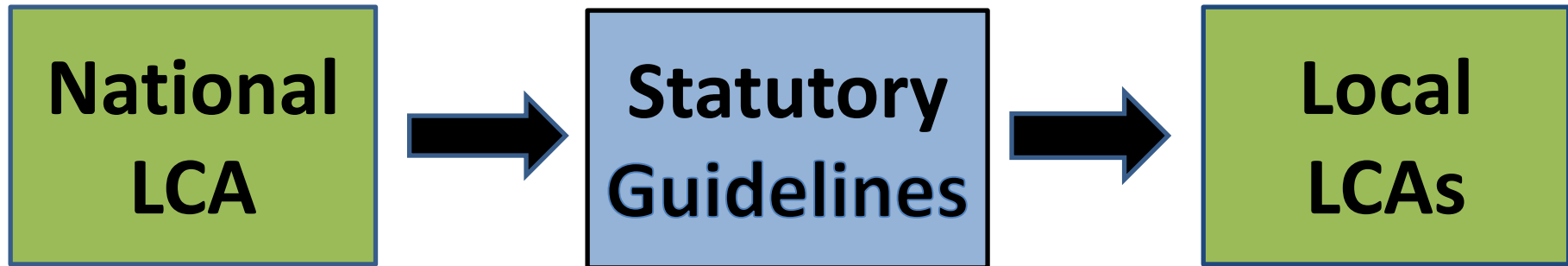
**19
ACTIONS**



Landscape Character Analysis (LCA)

A means of drawing together objective information about the many layers in landscape - physical and cultural

Assesses how the landscape is sensitive to change for natural and cultural causes (economic, social and physical processes)



LCA and the planning process

- No change to remit of current planning control
- Research will improve knowledge of current state of the landscape - improve quality of spatial planning process
- Assists the public and planning authorities to assign 'value' and 'sensitivity'
- Underpin landscape quality objectives



Mountmellik, Co Laois



Implementation 2015-2025

Phase One – years 1 to 4

- Research and preparation
- National LCA
- Issue LCA guidelines
- Review

Phase Two – years 4 to 10

- Review existing regulatory systems
- Introduce LCA nationwide
- Implement supporting objectives
- Monitor and review



Next Steps

- Approved by Government March 2015
- Publication and launch May 2015

