



First voluntary camp – start of the railway salvage



Bird view into the Čierny Balog landscape



Forest railway as a tourist attraction



Symbiosis of the landscape and technical monument



The railway line Čierny Balog - Dobroč



Original, lively relic of transport



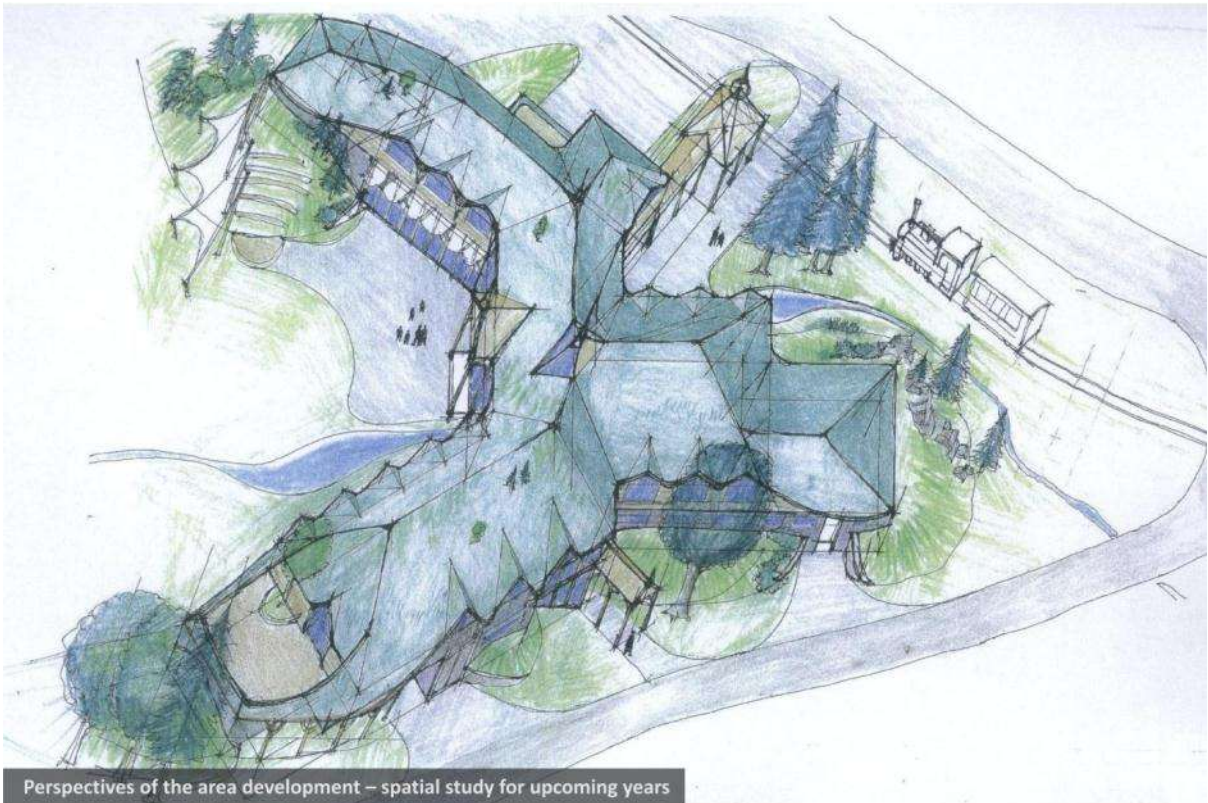
Wood transport in the Čierny Balog microregion



Wagons during their daily travel through the landscape



Landscape before and after reconstruction works (year 2012)



Perspectives of the area development – spatial study for upcoming years