

Intergovernmental Consultations on Migration, Asylum and Refugees (IGC)

Linguistic Integration of Adult Migrants: Towards the Evaluation of Policy and Practice

24-25 June 2009

The IGC

Purpose

- ✦ Policy debate
- ✦ Information exchange - policy and implementation

Format

- ✦ Process, not institution
- ✦ Informal character
- ✦ Non-political and non-decision making

Participation

- ✦ Inter-regional process
- ✦ Like-minded Participating States
- ✦ Inter-governmental

Approach

- ✦ Common interests, common problems
- ✦ Whole of migration
- ✦ Limited participation

- Overview of the IGC
- Activities on Integration
- Focus on Linguistic Integration
- Outcomes
- Challenges

Current participants



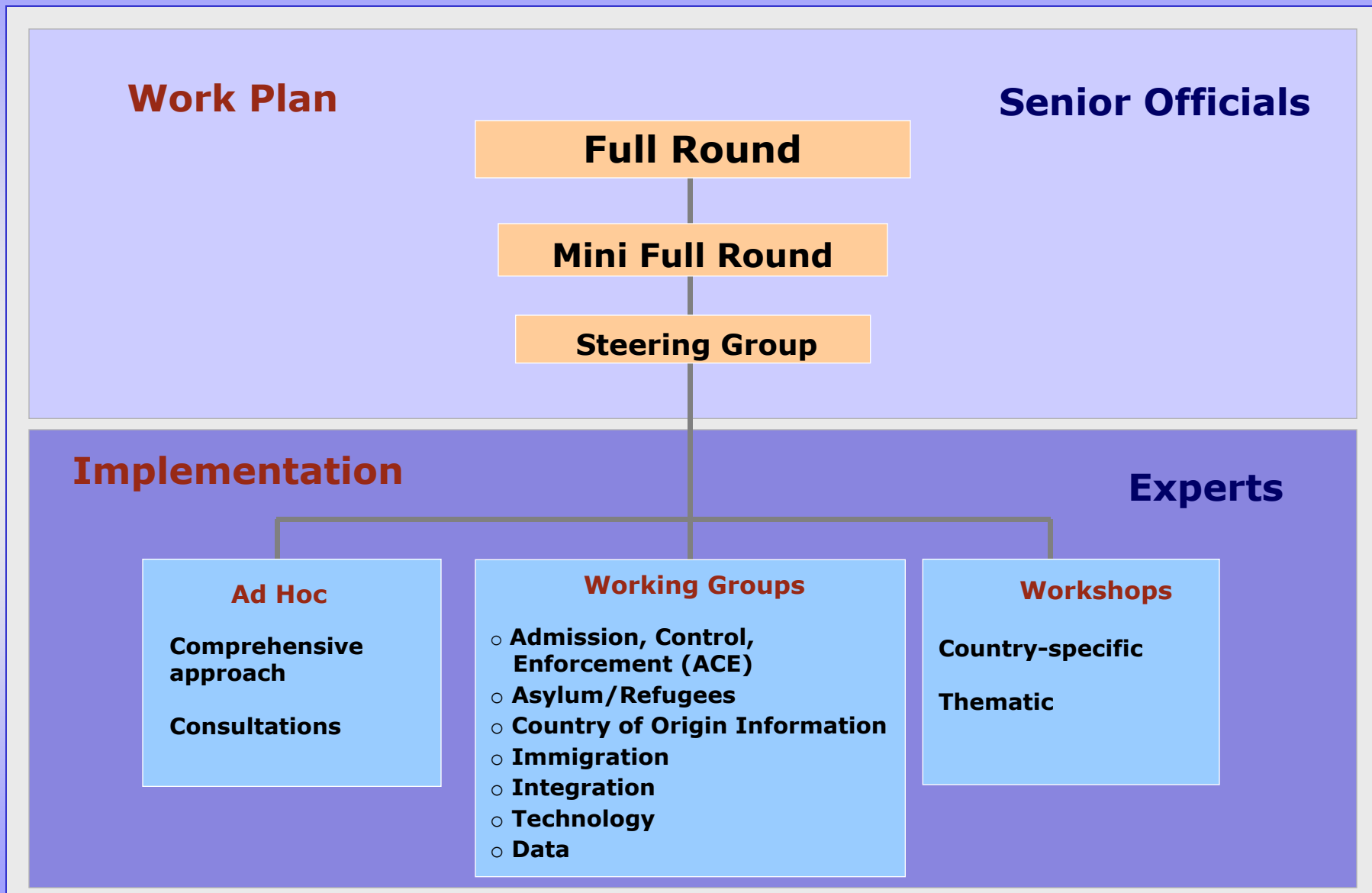
1 Supranational Body
European Commission



2 International Organisations
IOM & UNHCR



Structure and Lines of Authority



Maximum of 20 meetings per annum

Structure and Lines of Authority

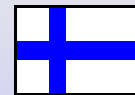
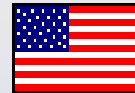
✦ Chair (currently United States)

- ✦ Changes annually
- ✦ Establishes theme(s)
 - ✦ 2010 - Finland: Citizenship and Immigration/Integration Processes
 - ✦ 2011 – Humanitarian Responses to Crises with Migration Consequences



✦ Troika

- ✦ Current, previous and next Chairs (USA, Finland, Germany)
- ✦ Provides continuity



✦ Secretariat

- ✦ Organises and facilitates meetings
- ✦ “Clearing house for information”
- ✦ Maintain networks of policy and operational experts
- ✦ Provides advice / support for policy development purposes

- Participation in IGC activities
 - regular: UNHCR, IOM and European Commission, Frontex
 - limited/ad hoc: Council of Europe, OECD, ICAO, Europol, academics, private sector, etc.
- Cooperation
 - shared organisational and substantive methodology (e.g. IGC set up, data collection, model legislation)
 - joint meeting with other RCPs (e.g. Budapest Group, Asia Pacific Consultations)

Information Exchange - 3 tracks

Meetings

- ⊙ Full-Round and Mini Full-Round
- ⊙ Steering Group
- ⊙ Working groups
- ⊙ Workshops

Documentation

- ⊙ Documents from PS
- ⊙ Comparative matrices and reports
- ⊙ Background papers
- ⊙ Data overviews

Databases

- ⊙ Asylum data
- ⊙ Return data
- ⊙ Readmission
- ⊙ Exclusion (1F cases)
- Etc.

Secure Web Site

Includes meeting documentation, discussion forums, information search and databases (statistics, full text)

IGC and Integration Issues

- 2005 – Workshop on Integration policies
- 2006 - Conclusion of IGC Strategic Review: immigration and integration formally added to process
- 2007 – Workshop on Immigrant Youth
- 2008 – Integration Working Group created
 - Focus on pre-entry and introductory programmes and tests, migrants' sense of belonging, social cohesion
 - Second phase on more specific issues (e.g. indicators, reception in host community, radicalisation)
- 2010 – Chair's Theme on Citizenship
 - Approaches to citizenship
 - Citizenship role in migration/integration continuum and interactions

Approach to Integration Discussions

- State approach and needs
- External speakers also included
- Debate on frameworks, integration issues, policy implications
- Comparisons between Europe and non-European States
- Value: linking policy makers with experts + sharing of practices from different perspectives
- Discussions supported by meetings and other information exchange tools
- Informality

Focus on Linguistic Integration

- Language as a sub-item
 - Introductory courses, agreements, tests
 - Host community
 - Citizenship, etc.
- First dedicated discussion in Spring 2008
 - Focus on standards, tools for assessing language competences of migrants
- Fall 2009
 - Overall approach to linguistic integration
 - Determination of levels and targets
 - Incentives
 - Language testing and assessment
 - Evaluation of programmes
- Fall 2010?

Outcomes of Discussions

- **Differences in Approaches**
 - **Non European PS:** more consistent approach as traditional immigration countries. Strong link language and settlement services.
 - **Europe:** politicalisation of integration – different context
- **Different Delivery Structures and Tools**
 - target groups
 - voluntary or compulsory training programmes, number of hours, free instruction (tuition), clients targeted by programmes
 - incentives
 - assessment practices
 - various strategies in evaluating the effectiveness of language training programming

Outcomes of Discussions

- **Common Challenges**

- Diversity of needs vs. policy/practical constraints
- Encouraging participation
- Consistency of tools, methods and outcomes
- Coordination (national level, other stakeholders)
- Impact of achievements on further education and job trajectories
- Reaching out specific groups (e.g. low educated, rural groups, mothers at home)

- **Interests and Needs**

- Tailor-made solutions and real-life situations
- Alternative forms of assessment, continuous assessment
- Role of employers
- Policy/programme evaluation frameworks
- Awareness of best practices (e.g. testing, assessment, teaching methods)
- Need for guidelines and reference materials (programme design, teaching methods, etc.)

For more information

igc

intergovernmental consultations
on migration, asylum and refugees

IGC Secretariat

Rue de Vermont 37-39, 1202 Geneva, Switzerland
tel +41 (0)22 919 6600 fax +41 (0)22 919 6610
admin@igc.ch