

Integrated Landscape Character Assessment (ILCA)

ELC in Swedish
regional planning

Including landscape
in long term spatial
planning

Bengt Schibbye
Emily Wade



ILCA to enable and support ...

- Our activities must contribute to the furthering of Sweden’s environmental quality targets and to the maintenance of attractive landscapes and the facilitation of their development.

Swedish Transport administration

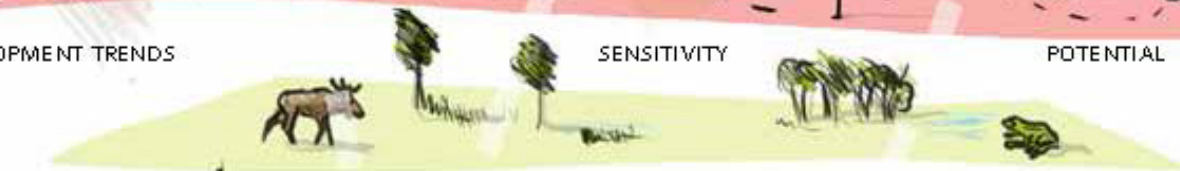




DEVELOPMENT TRENDS

SENSITIVITY

POTENTIAL



LANDSCAPE ECOLOGY



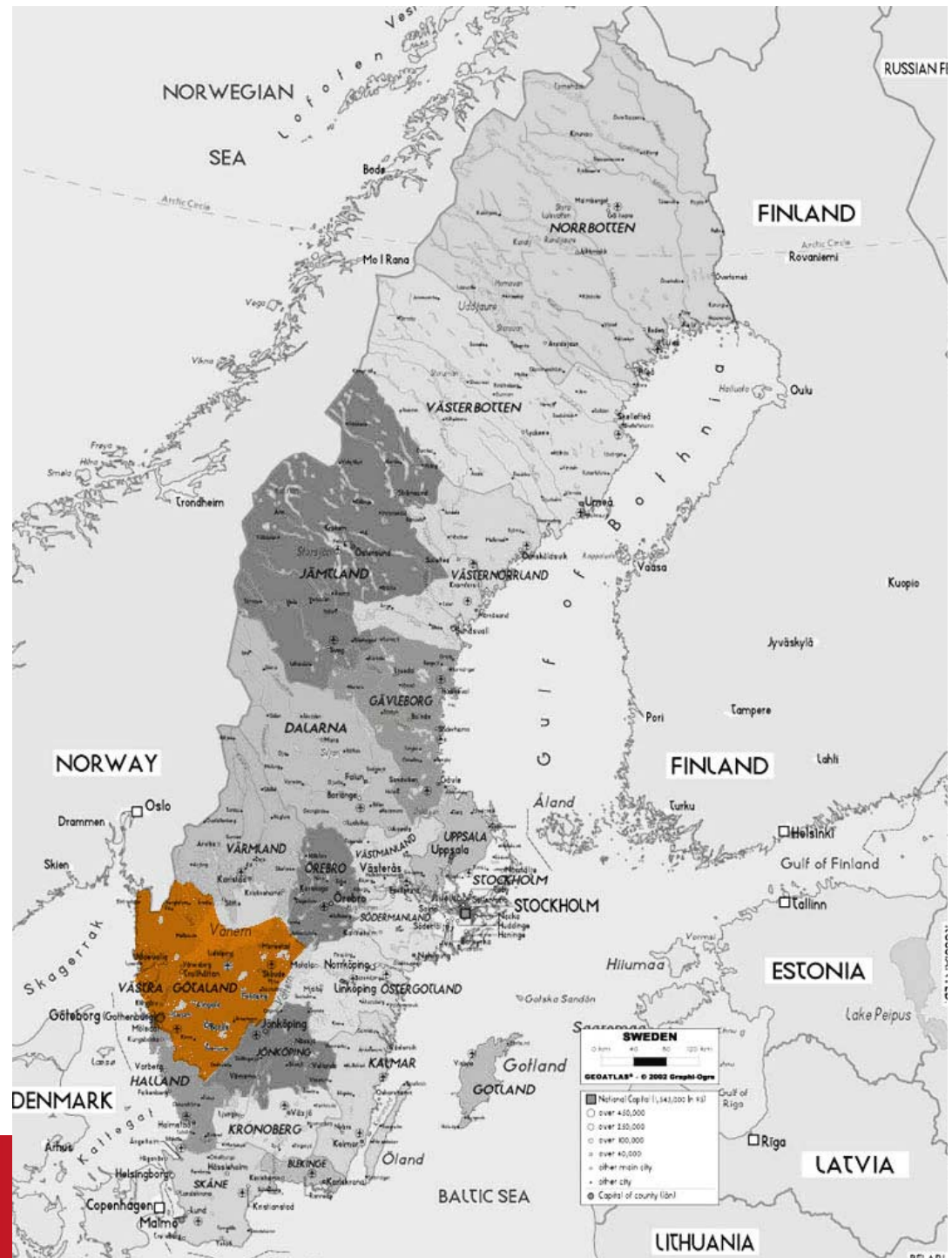
LANDSCAPE TIME-DEPTH



LANDSCAPE FORM

Västra Götaland ILCA for Regional Transport Infrastructure plan

24 000 sq km
26 Character areas
12 Character types
Narrative description
comprises form,
ecology, time depth



Falbygden



Bohus coast



Skara –Vara plain



Kinneulle railway applied study



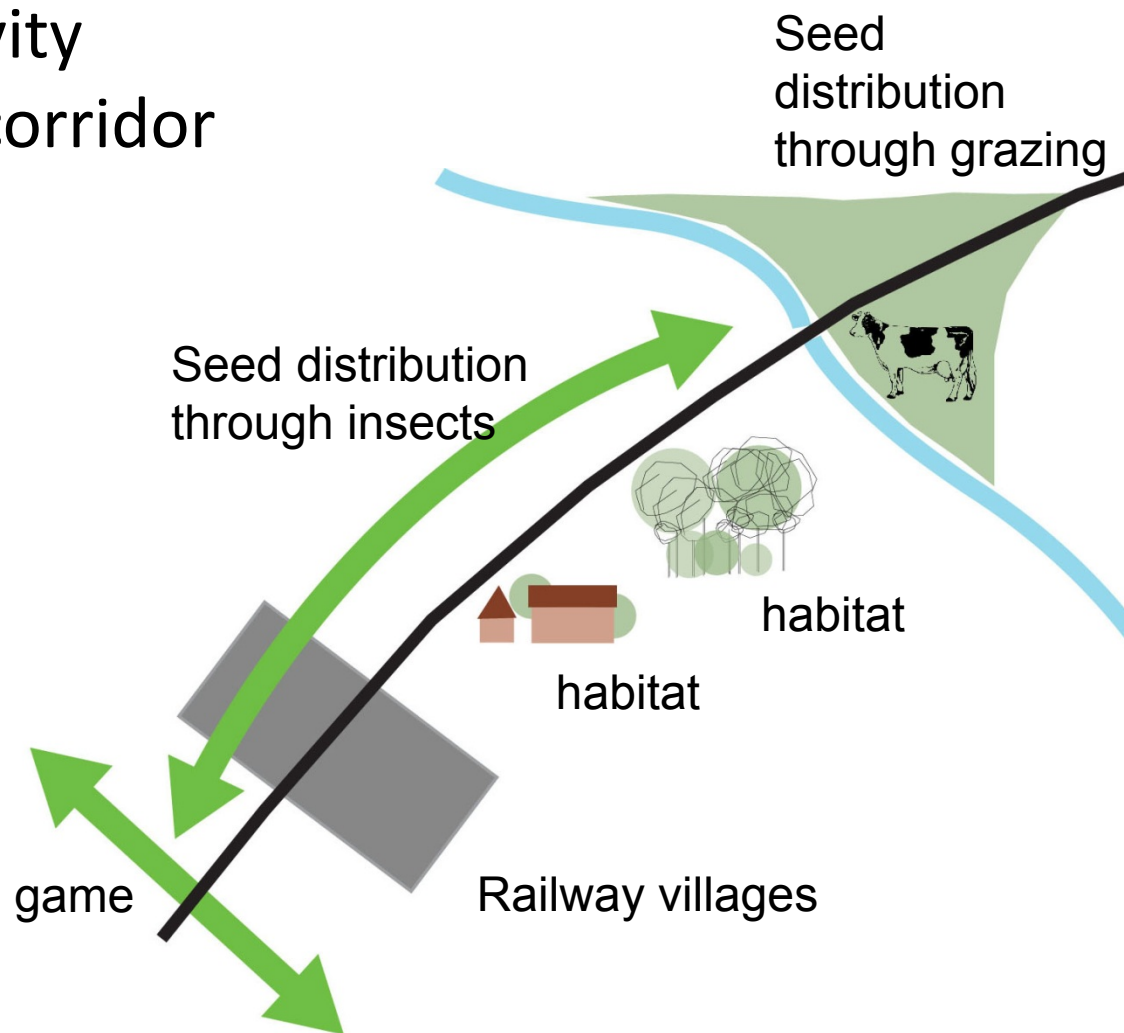
**Enhancing
connectivity**

**Crossing roads
and streams**

The trees

Railway villages

Enhance connectivity along the railway corridor



Västmanland

ILCA for Regional spatial development plan

6 000 sq m

County Administrative Board

County Council

Municipalities in the County

Association of Local

Authorities and County

Council



Points of departure: the ELC and the Swedish Planning legislation

- Awareness of the landscape values + the significance of a holistic perspective
- Skills to manage the processes that develops, protects, enhances or recreate landscapes
- Knowledge of human life, landscape and the interaction between man and landscape.
- Landscape quality targets





The character of Västmanland



Kyrka och skola i sockencentrum

Åar eller sjöar i dalbotten

Småbiotoper, bryn och åkerholmar

Bebyggelse i gränsen, på åsar och kullar i det öppna landskapet. Äldre vägnät

Flackt till böljande terräng. Långa utblickar.

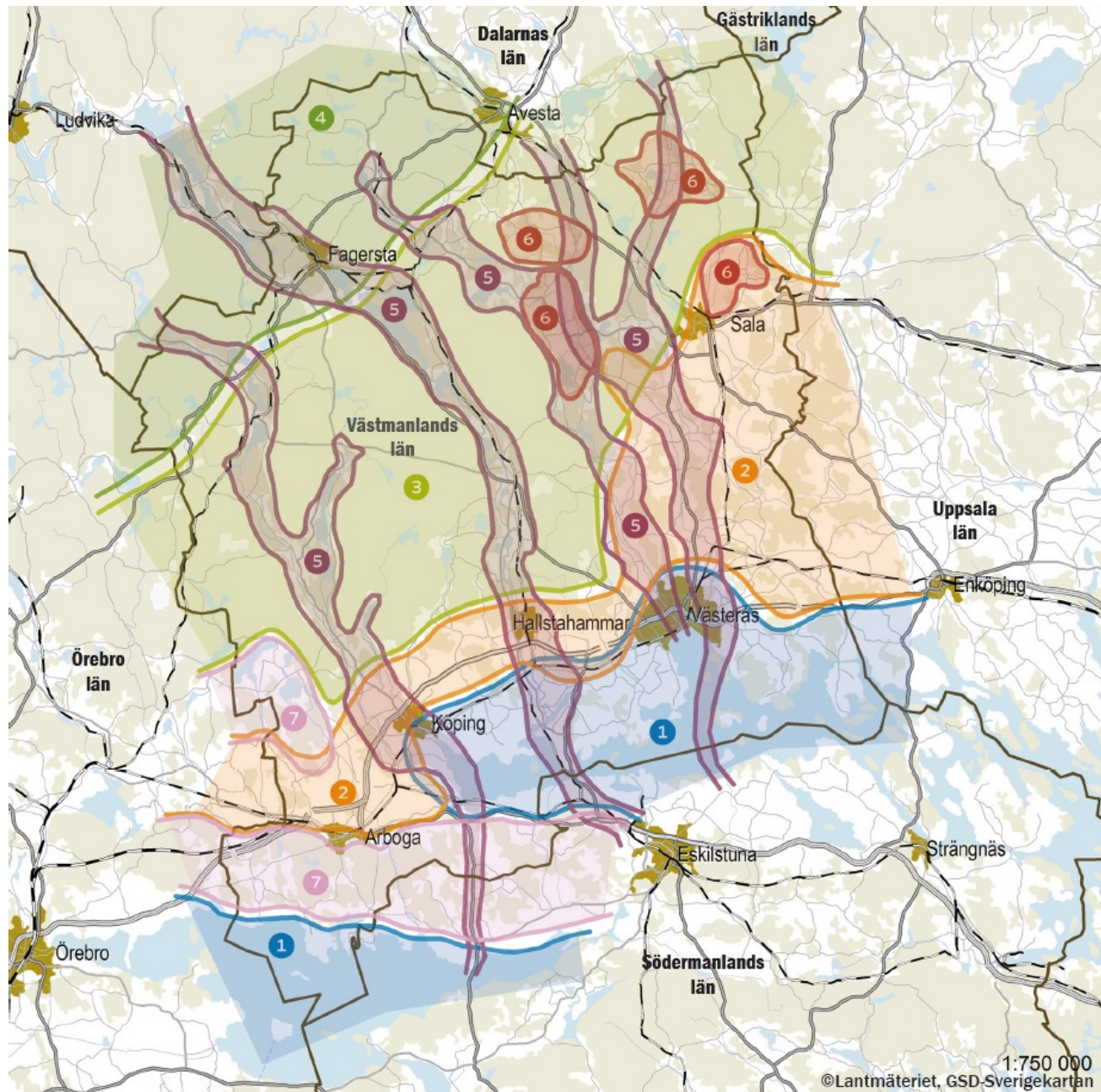
Våtmarker som betas. Före detta mader för ängsslåtter

Gamla lövträd



Participation and knowledge







Old Paradigm

Save the world

Fix specific problems (global climate change, hunger, poverty)

Be an exception to the rules

Doing less bad

Sustainability

New Paradigm

Create new institutions required to support a just, equitable and sustainable future.

Address the system that creates the problems.

Change the rules

Doing good

Restoration and resilience