



CAMP MONTENEGRO ICZM STRATEGY AND THE PLAN



Jelena Knežević, CAMP Coordinator
02nd of October 2013



SECTORAL CHARACTERISATION

PROBLEMS

RESPONSE

THEMES

DESCRIPTION

SYNTHESIS

ENVIRONMENT

ENV. & HEALTH

BIODIVERSITY

SOIL/EROSION

SEISMICS (HAZARD)

SURFACE WATERS

GROUND WATERS

SEA

LANDSCAPE

CLIMATE CHANGE

LAND USE

SOCIO-ECONOMICS

GOVERNANCE



SECTORAL CHARACTERISATION

THEMES

DESCRIPTION

ENVIRONMENT

GENERAL VULNERABILITY
ASSESSMENT (WITH
POLLUTION)

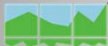
DETAILED VULNERABILITY
ASSESSMENT (NARROW
COASTAL ZONE)

LAND USE

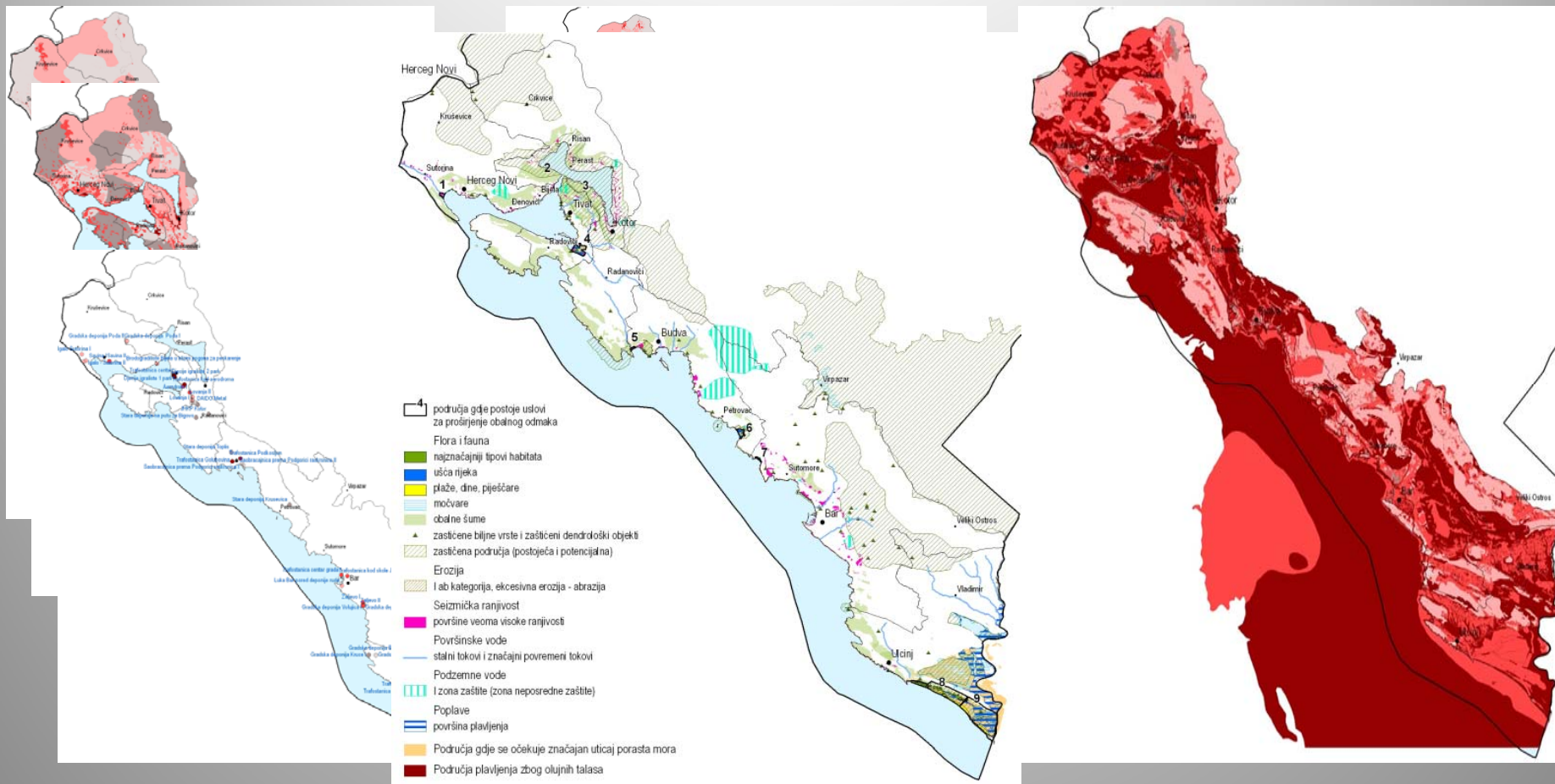
SOCIO-ECONOMICS

GOVERNANCE

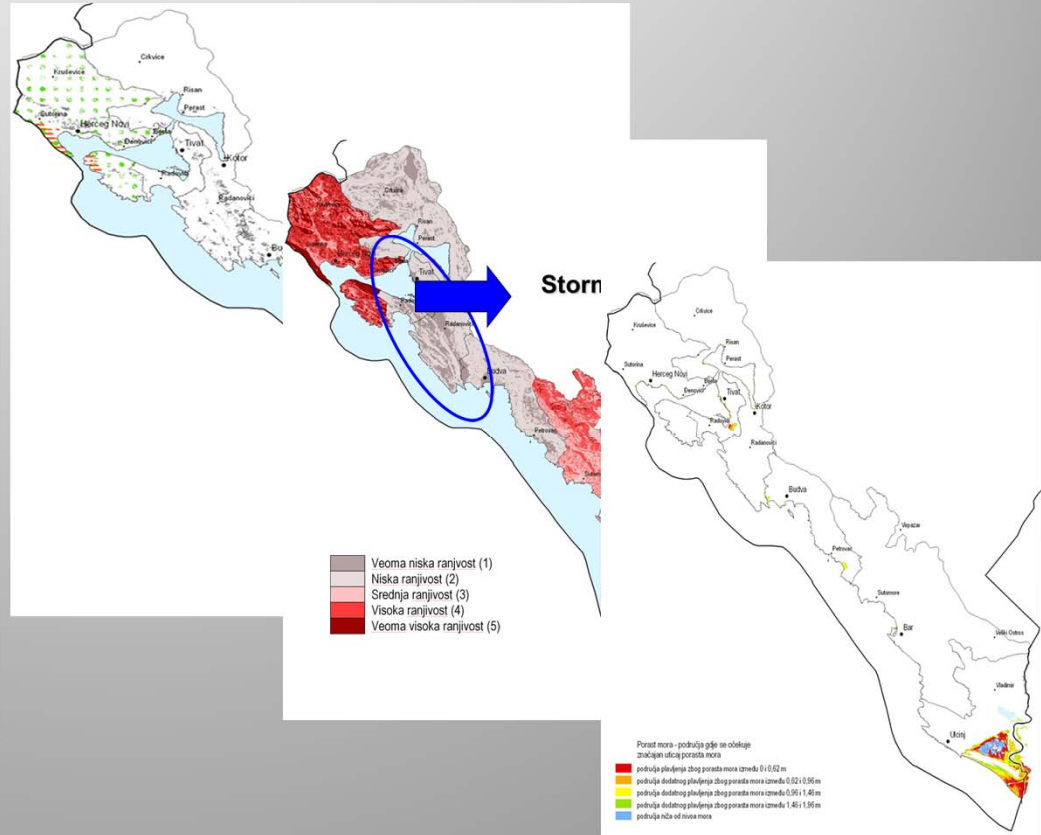
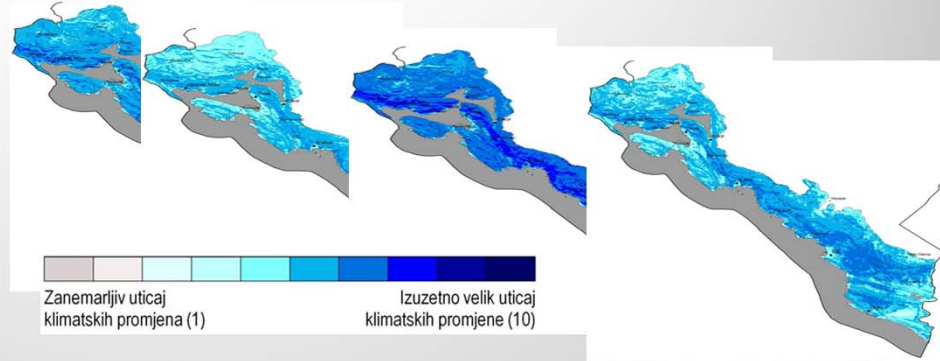
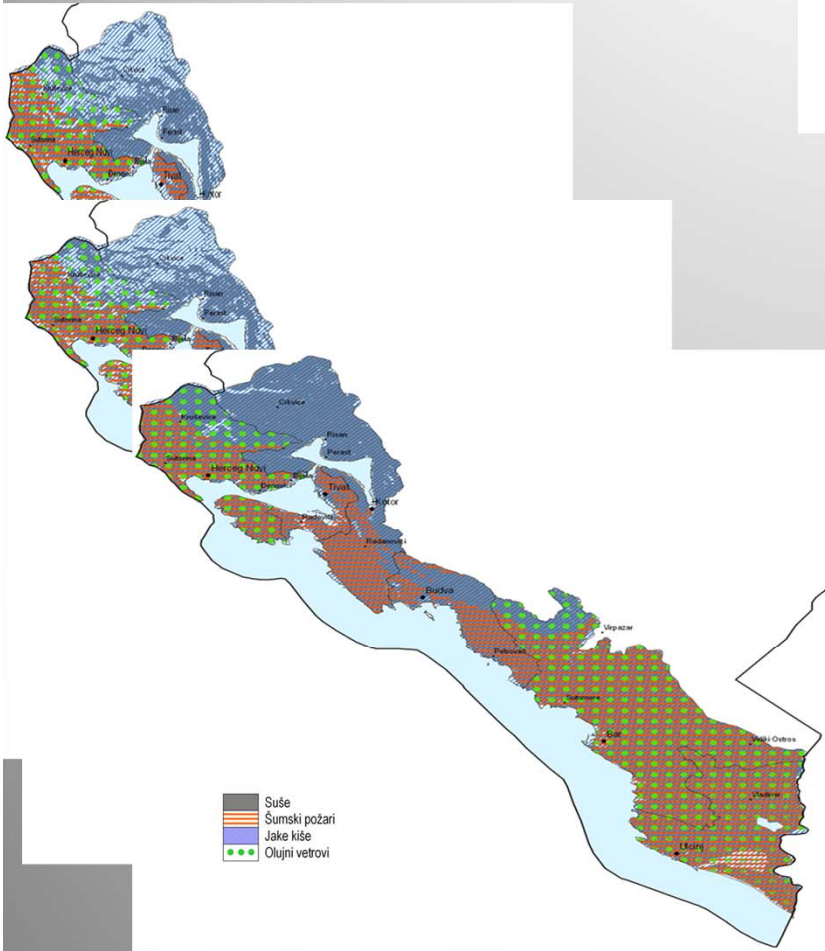
PRIORITY ACTIONS PROGRAMME

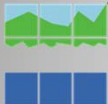


MINISTRY FOR SUSTAINABLE DEVELOPMENT AND TOURISM OF MONTENEGRO



PRIORITY ACTIONS PROGRAMME





SECTORAL CHARACTERISATION

THEMES

DESCRIPTION

ENVIRONMENT

LAND USE

SOCIO-ECONOMICS

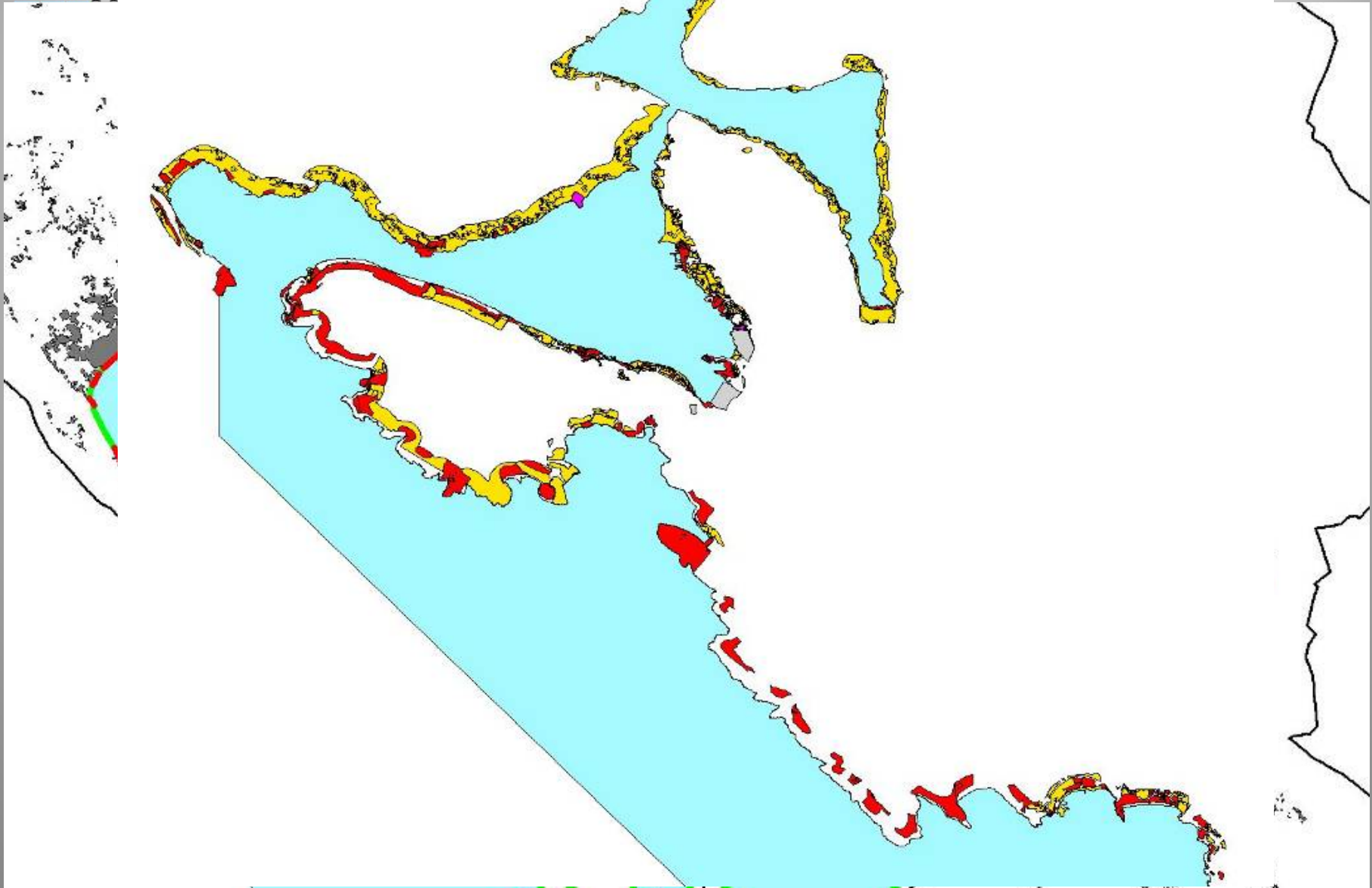
GOVERNANCE

ASSESSMENT OF BUILDABLE
AREAS

ASSESSMENT OF BUILT AREAS



PRIORITY
A
P





SECTORAL CHARACTERISATION

THEMES

ENVIRONMENT

LAND USE

SOCIO-ECONOMICS

GOVERNANCE

DESCRIPTION

VULNERABILITY ASSESSMENTS

LAND USE ASSESSMENTS

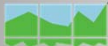
AGRICULTURE – ATTRACTIVENESS

DEMOGRAPHIC POTENTIAL

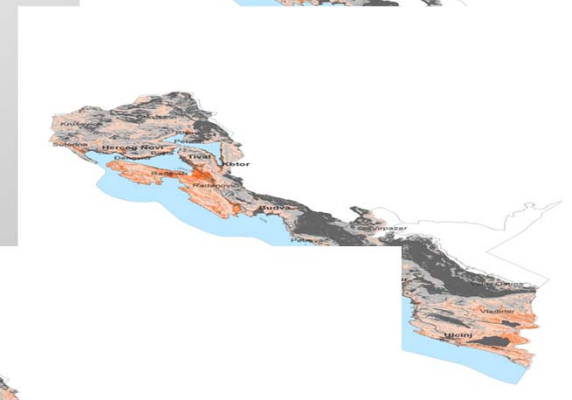
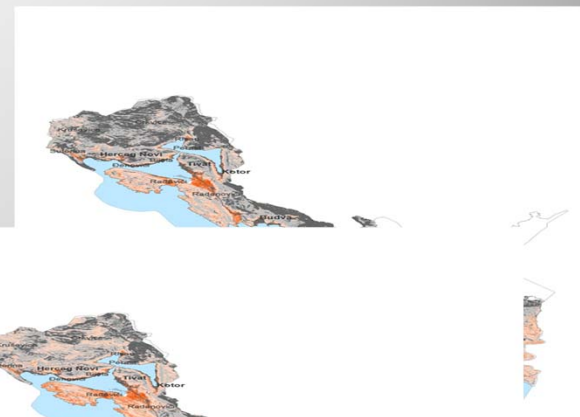
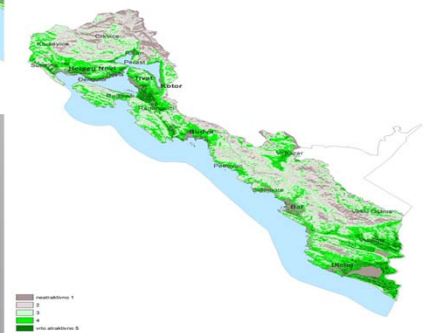
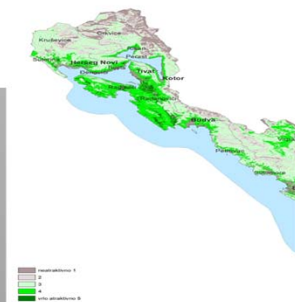
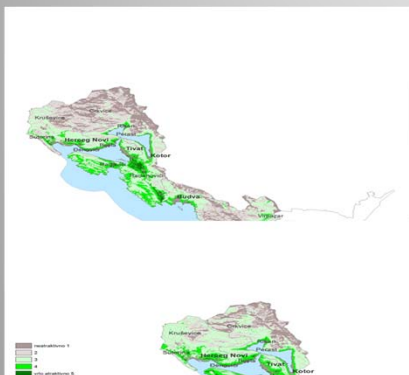
TOURISM DEVELOPMENT; TCCA;
FIELD SURVEY

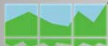
INSTITUTIONAL/ LEGAL CONTEXT:
reform of the inst. ogniz. and
national legislation

PRIORITY ACTIONS PROGRAMME



MINISTRY FOR SUSTAINABLE DEVELOPMENT AND TOURISM OF MONTENEGRO





SECTORAL CHARACTERISATION



Tabela 2: Kriteriji i smjernice za definiranje obalnog odmaka

namjena površina	stanje izgrađenosti	opis	planski dokument	prirodni kriteriji		
				R1 najviša ranjivost	R2 visoka ranjivost	dominantna geografska ograničenja
1. GP naselja	1. izgrađeno	površine obalnih naselja, izgrađene ili privedene namjeni, cjelovito GP		adaptacija		
	2. djelom izgrađeno	površine obalnih naselja djelom izgrađene, trakasto GP	DSLUTU	adaptacija uvjetno; naslijeđena prava		
			PPPNMD/PPO	adaptacija uvjetno, urbanistički kriteriji	adaptacija, urbanistički kriteriji	adaptacija uvjetno
3. neizgrađeni dijelovi	površine za širenje obalnih naselja	DSLUTU	adaptacija naslijeđena prava			
2. GP izvan naselja	1. izgrađeno	površine izdvojenih zona, primarno turističke namjene, izgrađene ili privedene namjeni		adaptacija		
			DSLUTU	adaptacija uvjetno; naslijeđena prava		
	2. djelom izgrađeno	površine izdvojenih zona, primarno turističke namjene, djelom izgrađene	PPPNMD	adaptacija uvjetno	adaptacija uvjetno; naslijeđena prava	adaptacija uvjetno
			ostali dokumenti	bez adaptacije	adaptacija uvjetno	adaptacija uvjetno
			DSLUTU	adaptacija naslijeđena prava		
3. neizgrađeno	neizgrađene izdvojene zone, primarno turističke i stambeno turističke namjene	PPPNMD/PPO	bez adaptacije	adaptacija naslijeđena prava	adaptacija uvjetno	
		ostali dokumenti	bez adaptacije	adaptacija uvjetno	adaptacija uvjetno	
3. prirodna obala izvan GP	1. neizgrađeno	1. kraći potezi, do 1km dužine, bez GP u zaleđu min. 300m (kraće cezure)	-	bez adaptacije	adaptacija uvjetno, kriterij pejzažnog planiranja	adaptacija uvjetno
		2. potezi duži od 1km, bez GP u zaleđu min. 300m (duži potezi prirodne obale)	-	bez adaptacije	adaptacija uvjetno, kriterij pejzažnog planiranja	adaptacija uvjetno
		3. kraći potezi ili isprekidano, kontaktno GP u zaleđu unutar 300-400m,	-	bez adaptacije	adaptacija uvjetno	adaptacija uvjetno
		4. potezi duži od 1km, kontaktno GP u zaleđu unutar 300-400m	-	bez adaptacije	adaptacija uvjetno	adaptacija uvjetno
	2. gradnja izvan GP	bespravna gradnja	-	bez adaptacije	adaptacija u funkciji sanacije uvjetno	
				adaptacija u funkciji sanacije		
4. napuštene namjene (browfield)		napuštena eksploatacijska područja, napušteni vojni i lučki sadržaji,...		adaptacija u funkciji sanacije		

SYNTHESIS

THE MOST IMPORTANT
COASTAL AREAS /
ECOSYSTEMS

CONFLICTING ZONES,
reduction of BA

EXTREMELY FRAGILE
COASTAL ECOSYSTEMS;
set-back expansion areas

OTHER VULNERABLE AREAS
(e.g. agriculture)

OPEN AREAS (art 8.3; non set-
back)

SET-BACK APPLICABILITY AND
CRITERIA

DEVELOPMENT OPPORTUNITIES



SECTORAL
CHARACTERISATION

THE MOST IMPORTANT
COASTAL AREAS /
ECOSYSTEMS

CONFLICTING ZONES,
reduction of BA

EXTREMELY FRAGILE
COASTAL ECOSYSTEMS;
set-back expansion
areas

OTHER VULNERABLE AREAS
(e.g. agriculture)

OPEN AREAS (art 8.3; non
set-back)

SET-BACK APPLICABILITY
AND CRITERIA

DEVELOPMENT
OPPORUNITIES

PROBLEMS

THEMATIC ISSUES

SYSTEMIC PRESSURES
(ROOT CAUSES)

RESPONSE

STRATEGIC PRIORITIES

OBJECTIVES

MEASURES/
INSTRUMENTS

PLANNING CONCEPTS
(set-back; no-go,
development and open
areas)

LAND, ECONOMIC and
OTHER POLICIES

INSTITUTIONAL SOLUTIONS
(mechanism, procedures (incl.
data, legislation reform),
education

PUBLIC PARTICIPATION

PRIORITY
ACTIONS

National
Strategy
ICZM



ICZM
Plan



Action
PLAN

Content and models
for development of
open spaces

(e.g. Projects on agriculture
development, recreational and
leisure activities, brownfields
sanation)

OPEN SPACE
CONCEPT

(Article 8.3 ICZM Protocol)

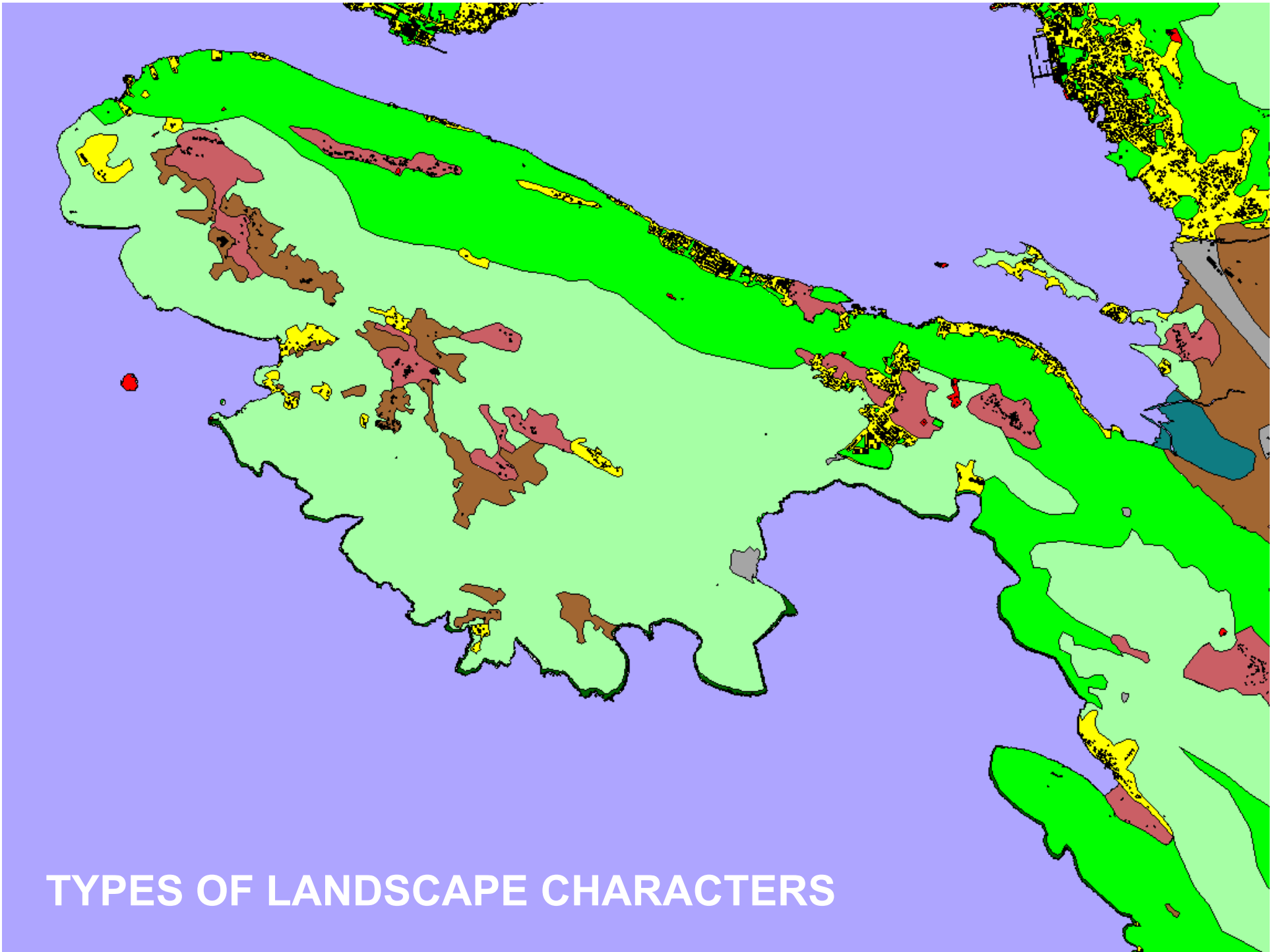
Coupling results

of relevance for rural development and
Development and protections of
Coastal landscapes

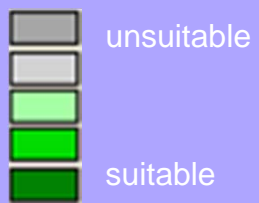


PPPNOPCG

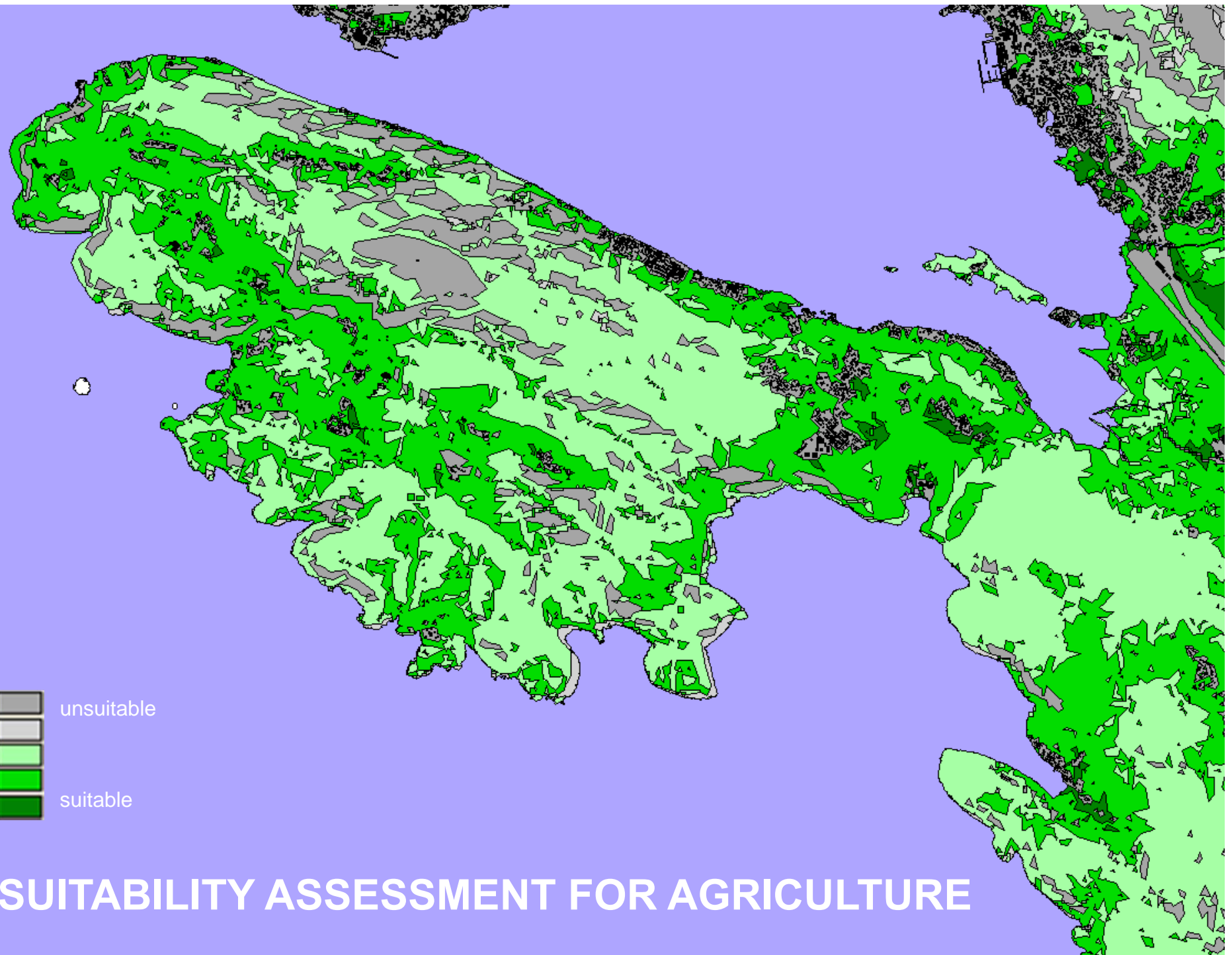


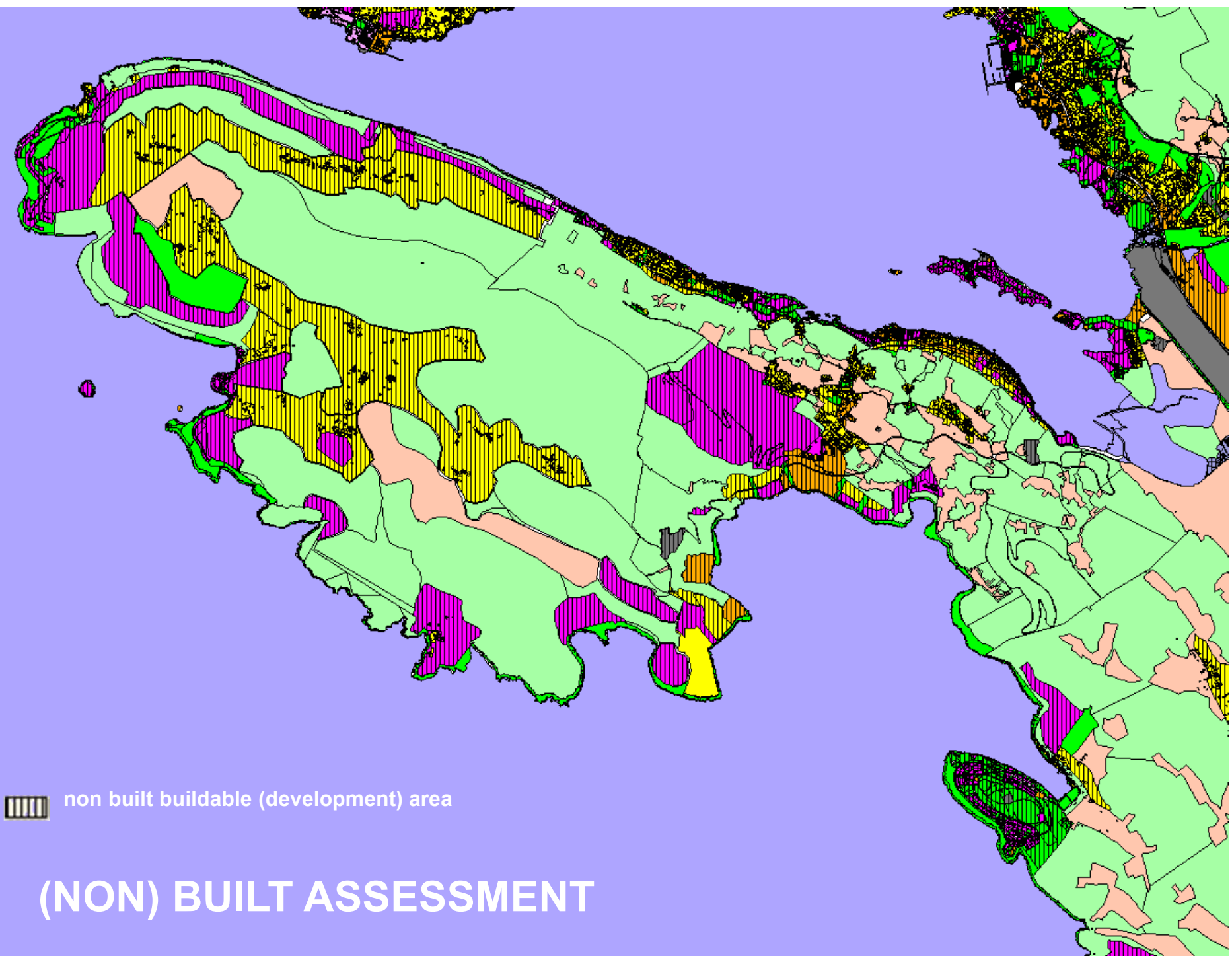


TYPES OF LANDSCAPE CHARACTERS



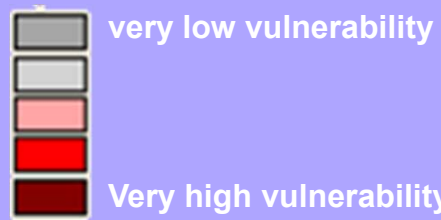
SUITABILITY ASSESSMENT FOR AGRICULTURE



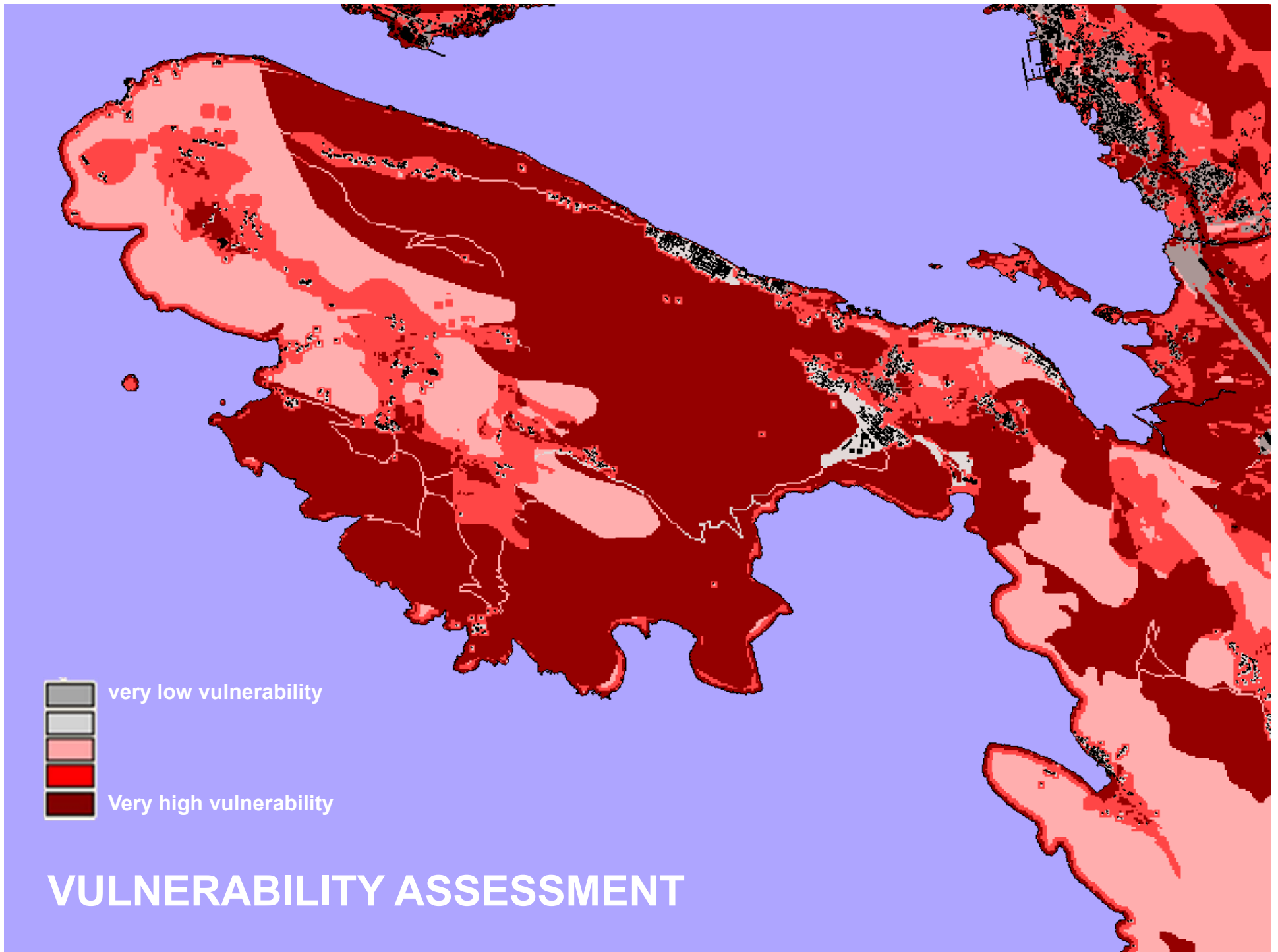


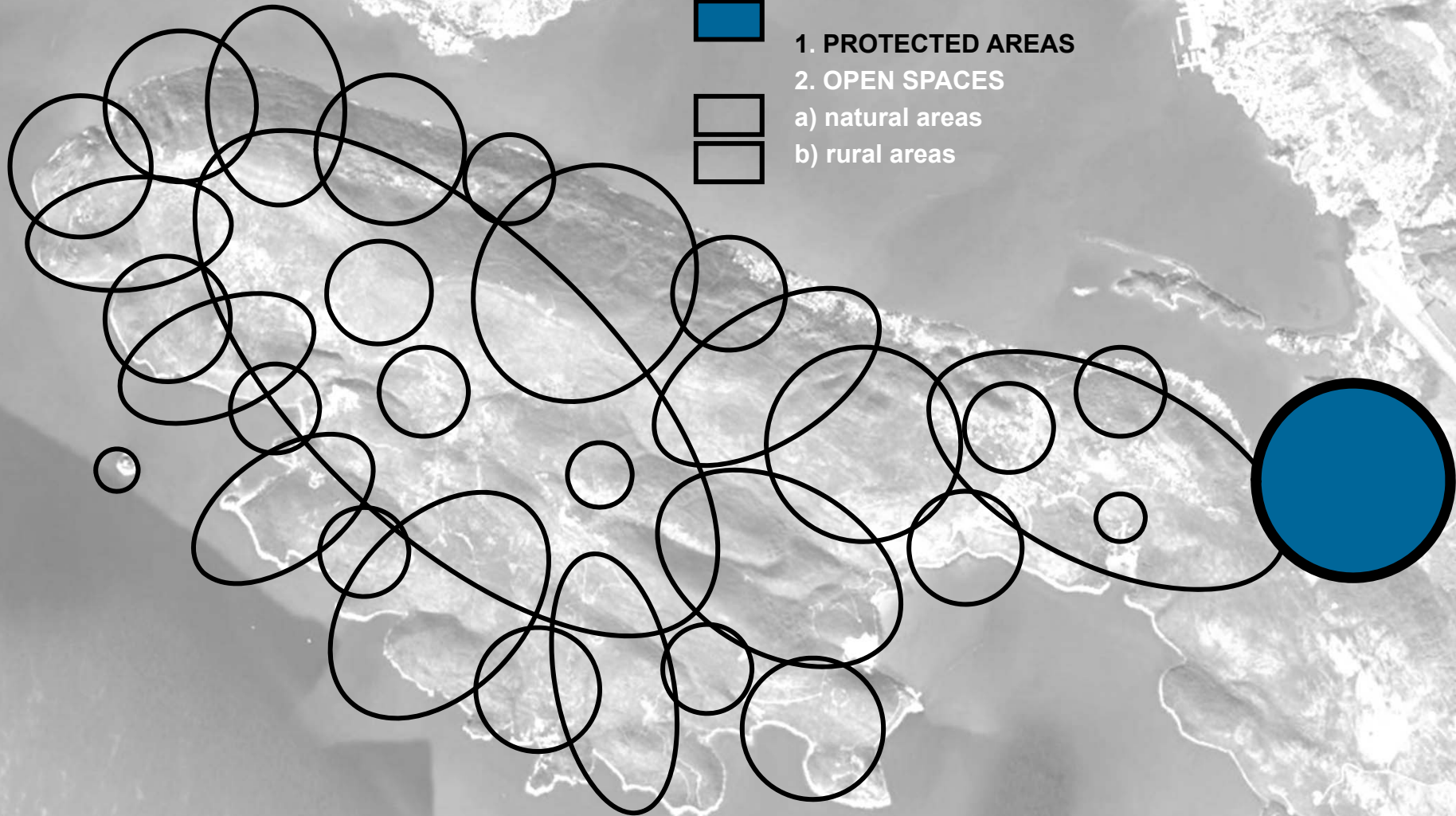
 non built buildable (development) area

(NON) BUILT ASSESSMENT



VULNERABILITY ASSESSMENT





1. PROTECTED AREAS



2. OPEN SPACES



a) natural areas

b) rural areas



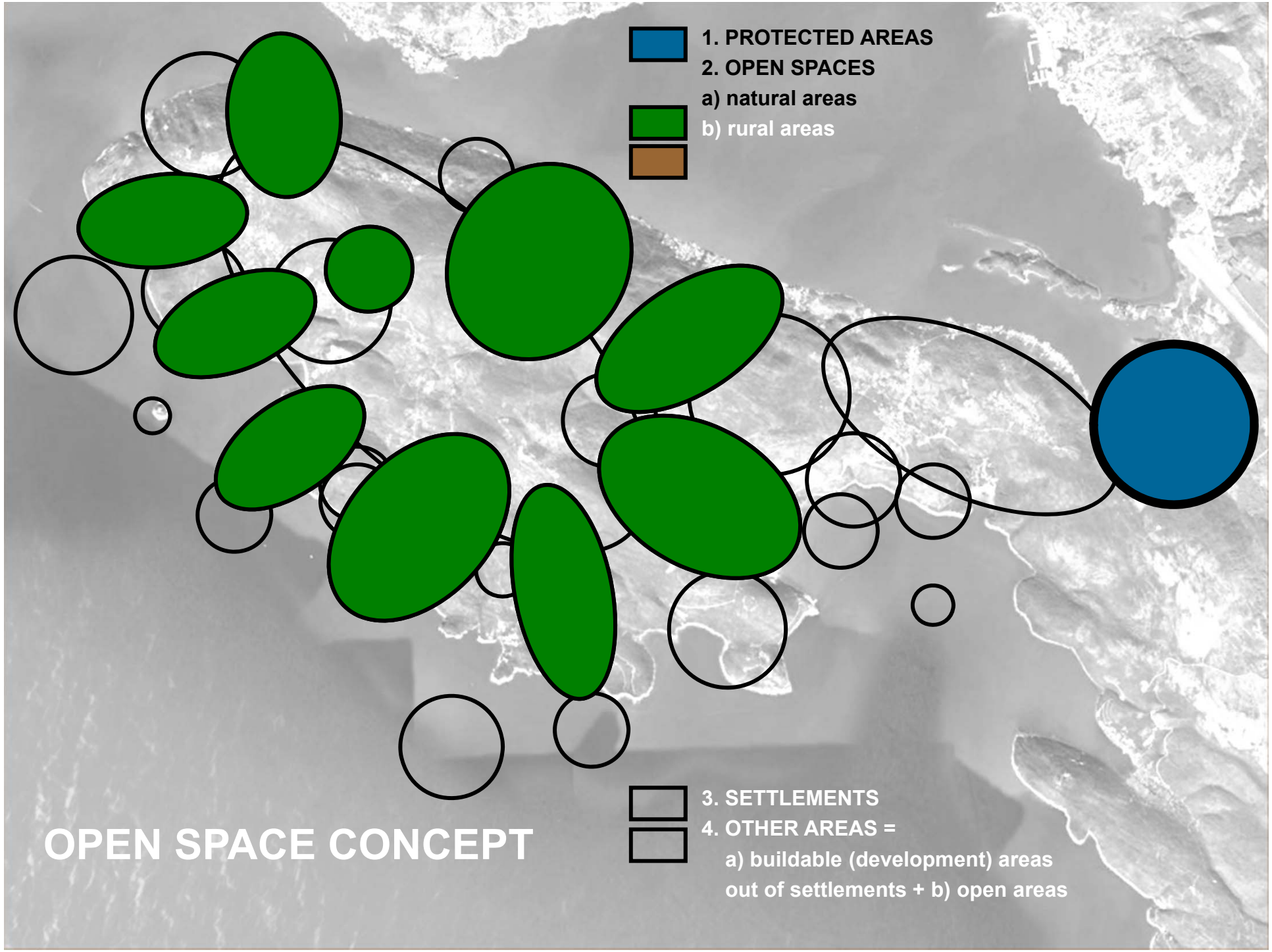
3. SETTLEMENTS



4. OTHER AREAS =

a) buildable (development) areas
out of settlements + b) open areas

OPEN SPACE CONCEPT



1. PROTECTED AREAS



2. OPEN SPACES

a) natural areas



b) rural areas



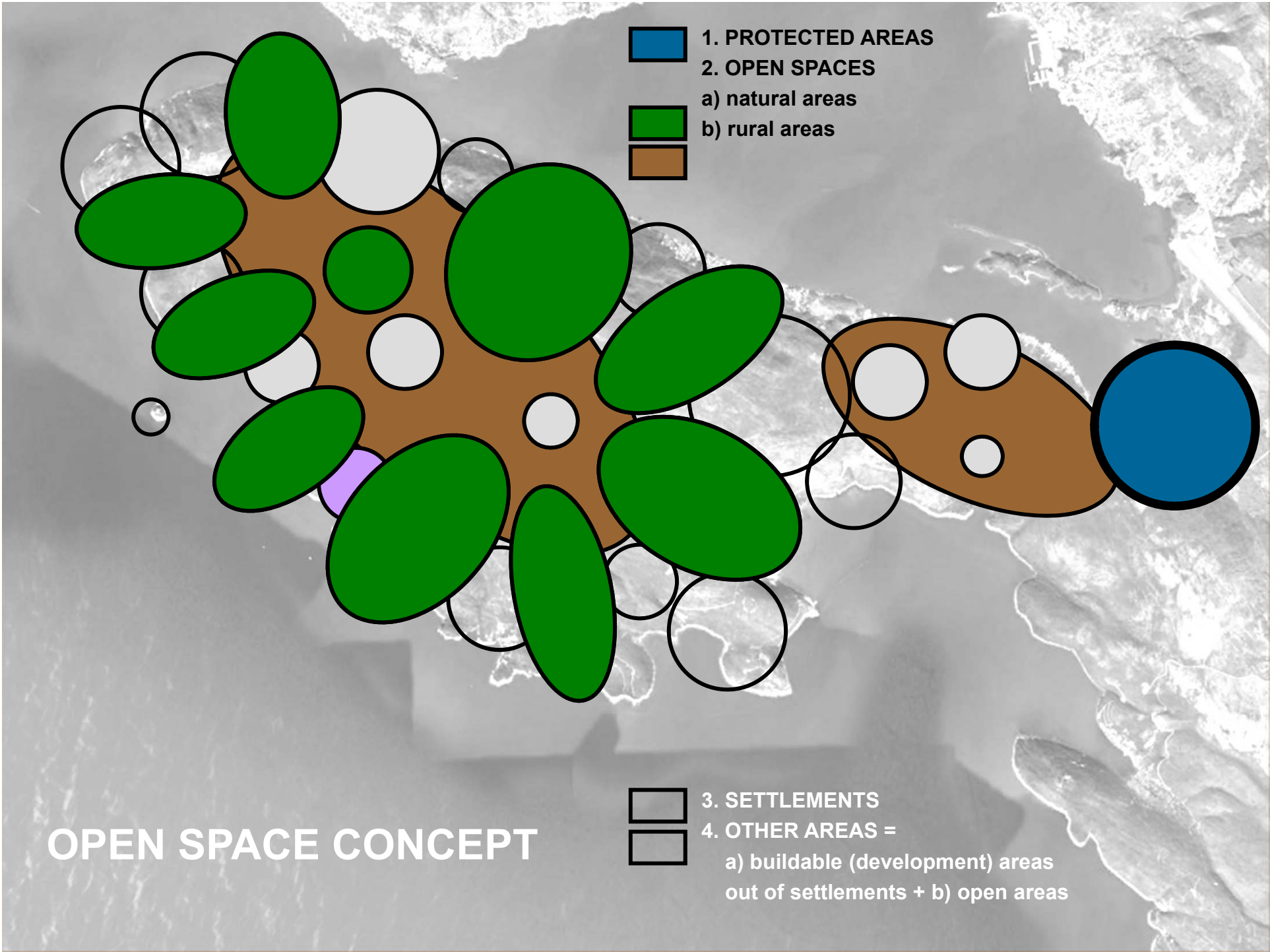
3. SETTLEMENTS



4. OTHER AREAS =

a) buildable (development) areas
out of settlements + b) open areas

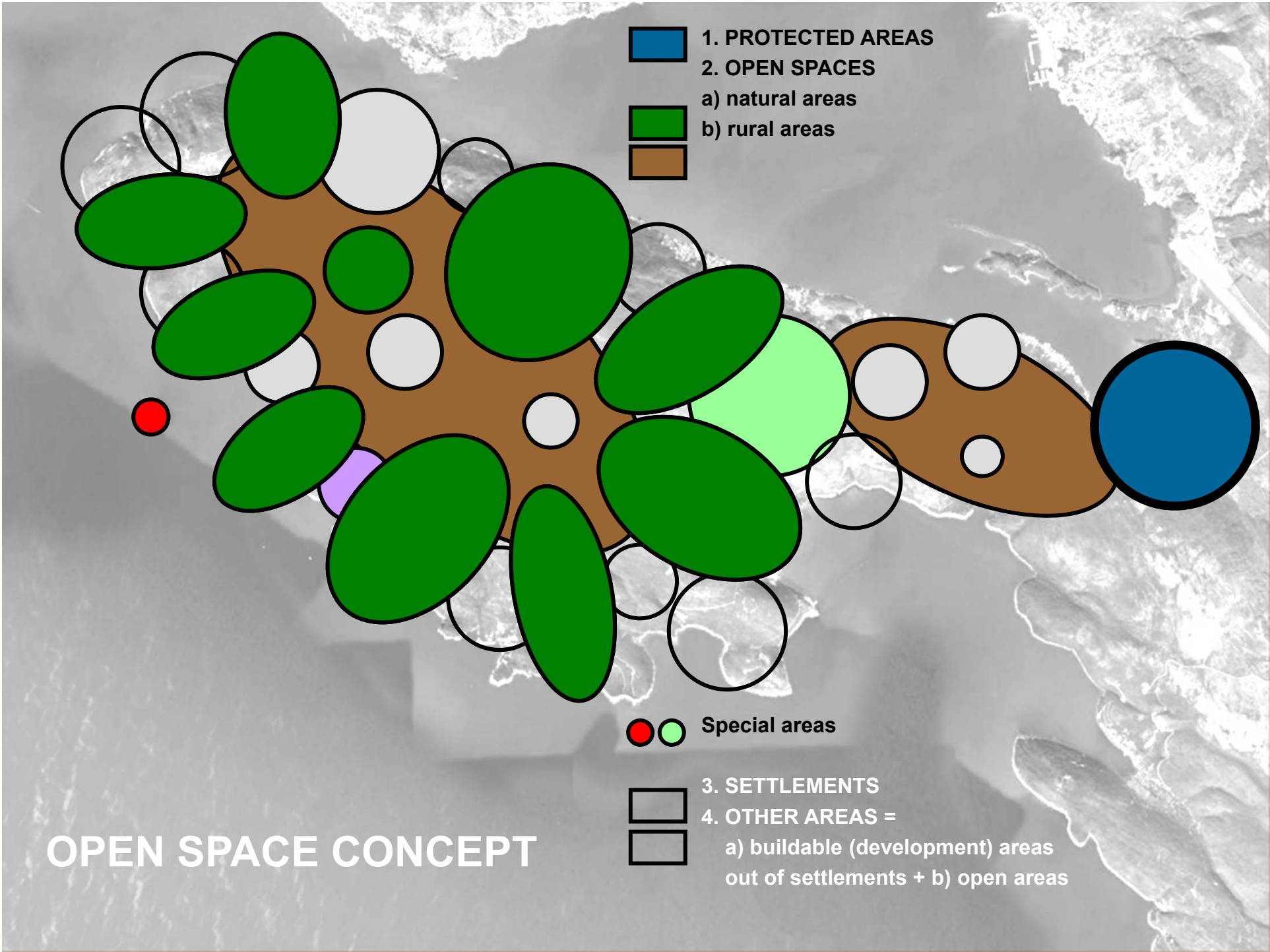
OPEN SPACE CONCEPT

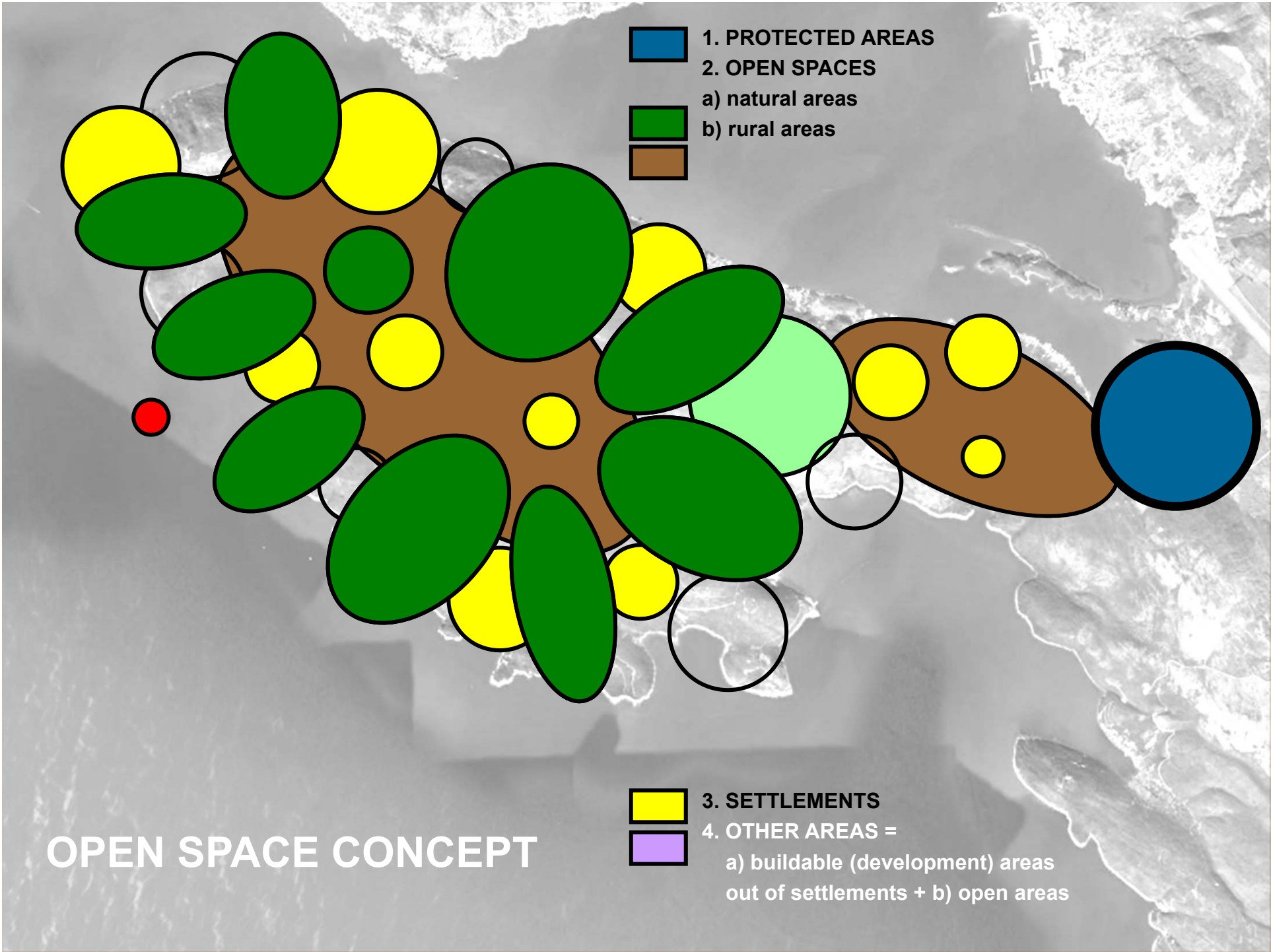


- 1. PROTECTED AREAS
- 2. OPEN SPACES
 - a) natural areas
 - b) rural areas

- 3. SETTLEMENTS
- 4. OTHER AREAS =
 - a) buildable (development) areas
 - out of settlements + b) open areas

OPEN SPACE CONCEPT





- 1. PROTECTED AREAS
- 2. OPEN SPACES
 - a) natural areas
 - b) rural areas

- 3. SETTLEMENTS
- 4. OTHER AREAS =
 - a) buildable (development) areas out of settlements + b) open areas

OPEN SPACE CONCEPT

